

EXPAND SPECIALTY CARE

BUILDING 1-RENOVATE 6TH FLOOR D-WING & 8TH FLOOR C-WING WEST



ASBESTOS CONTAINING MATERIAL (ACM) AND LEAD BASED PAINT (LBP) STATEMENT (Place an "X" in the appropriate box.)

This facility contains no known or suspected asbestos or LBP.

This facility contains __ asbestos and/or __ LBP that will be removed by the VA.

This facility contains asbestos that will be removed under this contract.

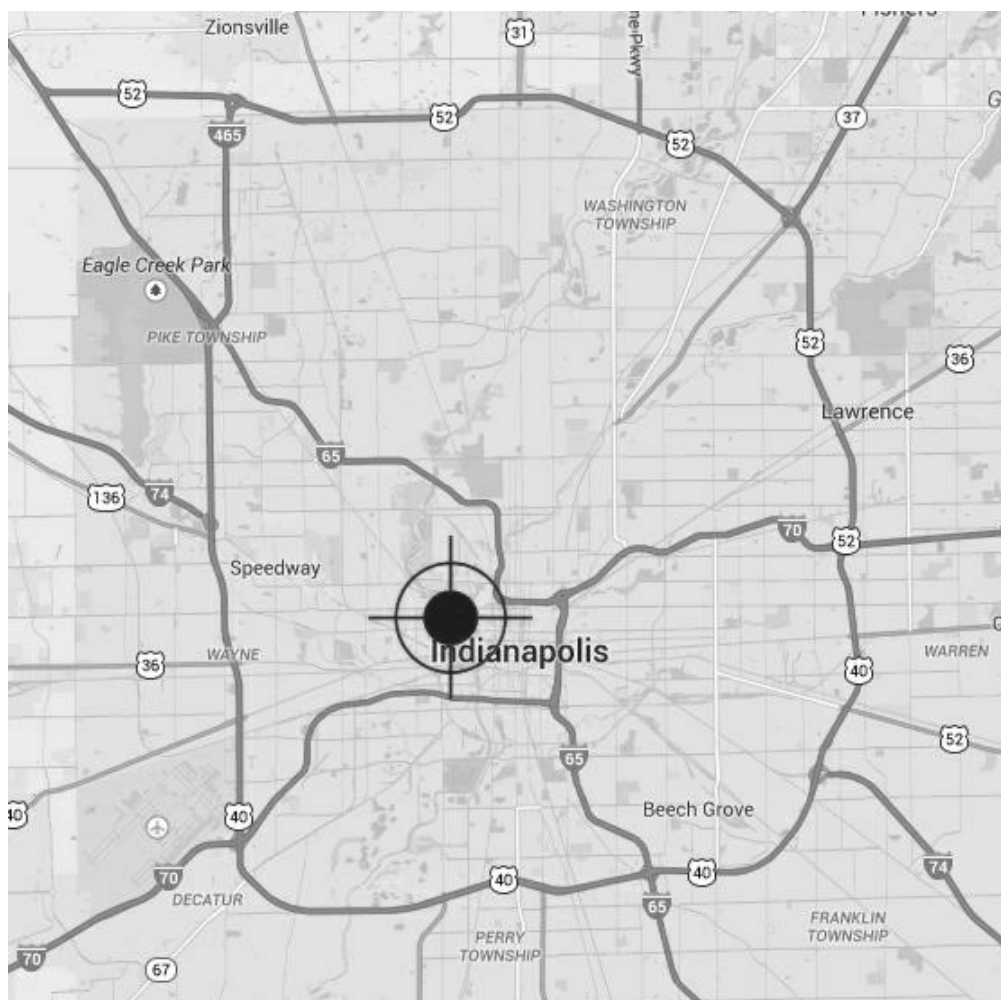
X

This facility contains __ asbestos and/or __ LBP that will be removed under a separate contract.

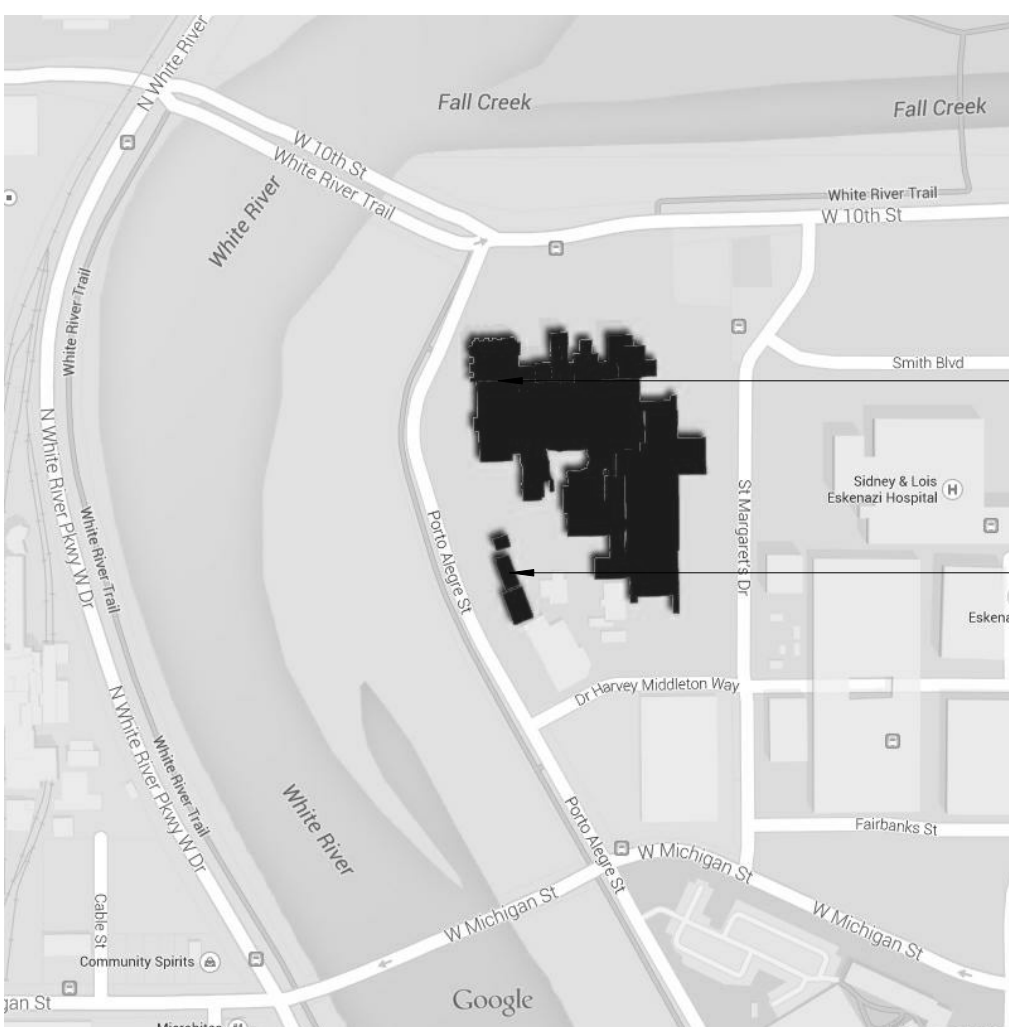
SHEET NUMBER	SHEET NAME
GENERAL	
1-GI-001	COVER SHEET
1-GI-002	ABBREVIATIONS & UL RATINGS
1-LS-001	SIXTH FLOOR-LIFE SAFETY PLAN
1-LS-002	EIGHTH FLOOR-LIFE SAFETY PLAN
ARCHITECTURE	
1-AD-101	SIXTH FLOOR DEMOLITION PLAN
1-AD-102	EIGHTH FLOOR DEMOLITION PLAN
1-WAS-001	WALL TYPES & RATED PARTITIONS
1-AS-101	SIXTH FLOOR-OVERALL
1-AS-102A	SIXTH FLOOR-AREA 'A'
1-AS-102B	SIXTH FLOOR-AREA 'B', 7TH FLOOR WORK
1-AS-103A	EIGHTH FLOOR-OVERALL & AREA 'A'
1-AS-103B	EIGHTH FLOOR-AREA 'B'
1-AS-111	SIXTH FLOOR-REFLECTED CEILING PLAN
1-AS-112	EIGHTH FLOOR-REFLECTED CEILING PLAN
1-AS-301	SIXTH FLOOR-SECTIONS & DETAILS
1-AS-401	SIXTH FLOOR-SIGNAGE
1-AS-402	SIXTH FLOOR-WALL PROTECTION
1-AS-403	EIGHTH FLOOR-SIGNAGE
1-AS-404	EIGHTH FLOOR-WALL PROTECTION
1-AS-411	SIXTH FLOOR - ONCOLOGY INTERIOR ELEVATION KEY PLAN
1-AS-412	SIXTH FLOOR - ONCOLOGY INTERIOR ELEVATIONS
1-AS-413	SIXTH FLOOR - ONCOLOGY INTERIOR ELEVATIONS
1-AS-414	SIXTH FLOOR - ONCOLOGY INTERIOR ELEVATIONS
1-AS-415	EIGHTH FLOOR-COMPENSATION & PENSION INTERIOR ELEVATION KEY PLAN
1-AS-416	EIGHTH FLOOR-COMPENSATION & PENSION INTERIOR ELEVATIONS
1-AS-417	SIXTH FLOOR - ONCOLOGY PHARMACY & MED PREP INTERIOR ELEVATIONS
1-AS-420	INTERIOR SECTIONS & DETAILS
1-AS-421	ENLARGED PLANS
1-AS-501	SIXTH & EIGHTH FLOOR-COMMON DETAILS
1-AS-601	SIXTH FLOOR-DOOR SCHEDULE & STOREFRONTS
1-AS-602	EIGHTH FLOOR-DOOR SCHEDULE
1-AS-701A	SIXTH FLOOR - ONCOLOGY FINISH PLAN - AREA 'A'
1-AS-701B	SIXTH FLOOR - ONCOLOGY FINISH PLAN - AREA 'B'
1-AS-702A	EIGHTH FLOOR - COMPENSATION & PENSION FINISH PLAN - OVERALL & AREA 'A'
1-AS-702B	EIGHTH FLOOR - COMPENSATION & PENSION FINISH PLAN - AREA 'B'
1-AS-801	SIXTH FLOOR - ONCOLOGY EQUIPMENT PLAN - OVERALL
1-AS-801A	SIXTH FLOOR - ONCOLOGY EQUIPMENT PLAN - AREA 'A'
1-AS-801B	SIXTH FLOOR - ONCOLOGY EQUIPMENT PLAN - AREA 'B'
1-AS-802A	SIXTH FLOOR - ONCOLOGY EQUIPMENT SCHEDULE
1-AS-802B	SIXTH FLOOR - ONCOLOGY EQUIPMENT SCHEDULE
1-AS-802C	SIXTH FLOOR - ONCOLOGY EQUIPMENT SCHEDULE
1-AS-803A	EIGHTH FLOOR - COMPENSATION & PENSION EQUIPMENT PLAN - OVERALL & AREA 'A'
1-AS-803B	EIGHTH FLOOR - COMPENSATION & PENSION EQUIPMENT PLAN - AREA 'B'
1-AS-804A	EIGHTH FLOOR - COMPENSATION & PENSION EQUIPMENT SCHEDULE
1-AS-804B	EIGHTH FLOOR - COMPENSATION & PENSION EQUIPMENT SCHEDULE
MECHANICAL	
1-M-001	MECHANICAL NOTES, ABBREVIATIONS, AND LEGEND
1-MD-101	SIXTH FLOOR MECHANICAL DEMOLITION PLAN
1-MD-102	SIXTH FLOOR MECHANICAL PIPING DEMOLITION PLAN
1-MD-103	EIGHTH FLOOR MECHANICAL DEMOLITION PLAN
1-MD-104	EIGHTH FLOOR MECHANICAL PIPING DEMOLITION PLAN
1-MD-105	D WING ROOF MECHANICAL DEMOLITION PLAN
1-MH-101	SIXTH FLOOR MECHANICAL HVAC PLAN
1-MH-102	EIGHTH FLOOR MECHANICAL HVAC PLAN
1-MH-103	D WING ROOF MECHANICAL PLAN
1-MP-101	SIXTH FLOOR MECHANICAL PIPING PLAN
1-MP-102	EIGHTH FLOOR MECHANICAL PIPING PLAN
1-MP-103	D WING ROOF MECHANICAL PIPING PLAN
1-MP-104	PARTIAL D WING BASEMENT MECHANICAL PIPING PLAN
1-M-501	MECHANICAL DETAILS
1-M-502	MECHANICAL DETAILS
1-M-503	MECHANICAL DETAILS
1-M-504	CONTROL DETAILS
1-M-505	CONTROL DETAILS
1-M-506	CONTROL DETAILS
1-MH-601	MECHANICAL SCHEDULES
1-MH-602	MECHANICAL SCHEDULES
PLUMBING	

SHEET NUMBER	SHEET NAME
1-P-001	PLUMBING NOTES, ABBREVIATIONS, LEGEND, AND SCHEDULES
1-FD-101	SIXTH FLOOR D WING FIRE PROTECTION DEMOLITION PLAN
1-FD-102	EIGHTH FLOOR C WING FIRE PROTECTION DEMOLITION PLAN
1-FX-101	SIXTH FLOOR D WING FIRE PROTECTION PLAN
1-FX-102	EIGHTH FLOOR C WING FIRE PROTECTION PLAN
1-PD-101	FIFTH FLOOR D WING PLUMBING DEMOLITION PLAN
1-PD-102	SIXTH FLOOR D WING PLUMBING DEMOLITION PLAN
1-PD-103	SIXTH FLOOR D WING MEDICAL GAS DEMOLITION PLAN
1-PD-104	SEVENTH FLOOR C WING PLUMBING DEMOLITION PLAN
1-PD-105	EIGHTH FLOOR C WING PLUMBING DEMOLITION PLAN
1-PD-106	EIGHTH FLOOR C WING MEDICAL GAS DEMOLITION PLAN
1-PP-101	FIFTH FLOOR D WING PLUMBING PLAN
1-PP-102	SIXTH FLOOR D WING WASTE AND VENT PLAN
1-PP-103	SIXTH FLOOR D WING DOMESTIC WATER PLAN
1-PP-104	SIXTH FLOOR MEDICAL GAS PLAN
1-PP-105	SEVENTH FLOOR C WING PLUMBING PLAN
1-PP-106	SEVENTH FLOOR D WING PLUMBING PLAN
1-PP-107	EIGHTH FLOOR C WING WASTE AND VENT PLAN
1-PP-108	EIGHTH FLOOR C WING DOMESTIC WATER PLAN
1-PL-501	PLUMBING DETAILS
1-PP-901	SIXTH FLOOR D WING WASTE, VENT, AND STORM ISOMETRIC
1-PP-902	SIXTH FLOOR D WING DOMESTIC WATER ISOMETRIC
1-PP-903	EIGHTH FLOOR D WING WASTE, VENT, AND STORM ISOMETRIC
1-PP-904	EIGHTH FLOOR D WING DOMESTIC WATER ISOMETRIC
ELECTRICAL	
1-E-001	ELECTRICAL SYMBOLS AND ABBREVIATIONS
1-ED101	SIXTH FLOOR ELECTRICAL DEMOLITION PLAN
1-ED102	SIXTH FLOOR LIGHTING DEMOLITION PLAN
1-ED103	SIXTH FLOOR ELECTRICAL DEMOLITION ABOVE CEILING CONDUIT PLAN
1-ED104	SIXTH FLOOR TECHNOLOGY DEMOLITION PLAN
1-ED105	EIGHTH FLOOR ELECTRICAL DEMOLITION PLAN
1-ED106	EIGHTH FLOOR LIGHTING DEMOLITION PLAN
1-ED107	EIGHTH FLOOR ELECTRICAL DEMOLITION ABOVE CEILING CONDUIT PLAN
1-ED108	EIGHTH FLOOR TECHNOLOGY DEMOLITION PLAN
1-EP101	SIXTH FLOOR POWER PLAN
1-EP102	EIGHTH FLOOR POWER PLAN
1-EM-101	SIXTH FLOOR MECHANICAL POWER PLAN
1-EM-102	EIGHTH FLOOR MECHANICAL POWER PLAN
1-EM-103	D WING ROOF MECHANICAL POWER PLAN
1-ET101	SIXTH FLOOR TECHNOLOGY SYSTEMS PLAN
1-ET102	EIGHTH FLOOR TECHNOLOGY SYSTEMS PLAN
1-EL101	SIXTH FLOOR LIGHTING PLAN
1-EL102	EIGHTH FLOOR LIGHTING PLAN
1-E-401	ELECTRICAL PLAN ENLARGEMENTS
1-E-501	ELECTRICAL DETAILS
1-E-502	ELECTRICAL DETAILS
1-E-503	ELECTRICAL DETAILS
1-E-601	ELECTRICAL SINGLE-LINE DIAGRAM AND EQUIPMENT SCHEDULE
1-E-602	ELECTRICAL PANEL SCHEDULES
1-E-603	ELECTRICAL PANEL SCHEDULES
1-E-604	ELECTRICAL PANEL SCHEDULES
1-F-101	SIXTH FLOOR FIRE ALARM & LIFE SAFETY DEMOLITION PLAN
1-F-102	EIGHTH FLOOR FIRE ALARM & LIFE SAFETY DEMOLITION PLAN
1-FA101	SIXTH FLOOR FIRE ALARM LIFE SAFETY PLAN
1-FA102	EIGHTH FLOOR FIRE ALARM LIFE SAFETY PLAN

LOCATION MAP



VICINITY MAP



BUILDING 1

BUILDING 5

100% SUBMITTAL
FULLY SPRINKLERED

Revision #	Description	Date
1	65% DESIGN DEVELOPMENT	1-23-15
2	95% CONSTRUCTION DOCUMENTS	2-25-15
3	100% SUBMITTAL DOCUMENTS	5-29-15
4	BID DOCUMENTS	9-25-15



**United States Department of
Veterans Affairs**
R. L. Roudebush VAMC
1481 West 10th Street
Indianapolis, Indiana 46202

**AMERICAN
STRUCTUREPOINT
INC.**
7260 SHADELAND STATION
INDIANAPOLIS, IN 46266-0877
TEL 317.547.5580 FAX 317.543.0270
www.structurepoint.com

APOGEE
Consulting Group

**Wp
DESIGN**

USFin Development, LLC
1105 West Weir Street
Litchfield, IL 62056



Drawing Title
COVER SHEET

Approved: Project Director

Project Title
EXPAND SPECIALTY
CARE

Location
R. L. Roudebush VAMC, Indianapolis, IN

Date
09-25-15

Checked
FF

Drawn
APN

Project Number
V.A. 583-331
Building Number
1
Drawing Number
1-GI-001
11FY14

Office of
Construction
and Facilities
Management

VA Department of
Veterans Affairs

MATERIALS LEGEND

	ACOUSTICAL CEILING TILE		GRATING (SECTION)		SHEATHING: GYPSUM, OR AS NOTED
	AIR BARRIER SYSTEM		GYPSUM WALL BOARD		SPRAYED FIREPROOFING SHOWN ON ROLLED SHAPE
	BATT INSULATION: THERMAL OR ACOUSTICAL, UNO		INSULATED GLASS: (DETAIL)		STONE: LIMESTONE, GRANITE, MARBLE OR AS NOTED
	BRICK MASONRY		INSULATED GLASS: (SMALL SCALE)		TERRA COTTA, STRUCTURAL CLAY TILE
	CARPET, CARPET TILE (DETAIL)		MEMBRANE, WATERPROOF, ROOF, DAMPROOFING		TILE: CERAMIC, QUARRY, UNO
	CONCRETE, CAST-IN-PLACE		METAL: ROLLED SHAPES		WOOD/ENGINEERED: GLUE LAMINATED
	CONCRETE, PRECAST/CAST STONE		METAL: TYPE AS NOTED		WOOD/FINISHED, SHOWN CUT AND ELEVATION
	CONCRETE MASONRY UNIT		PARTICLEBOARD		WOOD FLOOR, WOOD SHINGLES, OR SIDING
	EARTH		PLASTER ON METAL LATH		WOOD FRAMING / BLOCKING: CONTINUOUS
	EIFS		PLYWOOD		WOOD SHIM
	GLASS FIBER REINFORCED CONCRETE SIDING OR TRIM		RESINOUS FLOORING: TERRAZO, TROWEL-ON, UNO		
	GRANULAR FILL		RIGID INSULATION: THERMAL, ACOUSTICAL, OR SAFING		
	GRATING (PLAN)		SAND, GROUT AS NOTED		

NOTE: PATTERNS SHOWN REPRESENT CUT MATERIALS IN PLAN OR SECTION, UNLESS NOTED OTHERWISE.

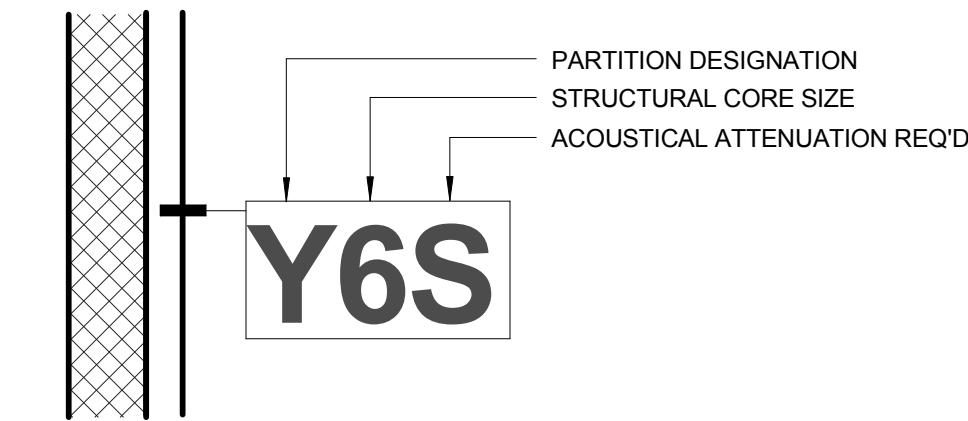
GENERAL NOTES

- REFER TO SHEET 1-AS-001 FOR WALL HEIGHTS AND TYPE DESCRIPTIONS.
- SEE SHEET 1-G1-002 FOR GRAPHIC SYMBOL LEGEND.
- COORDINATE WORK OF ALL TRADES PRIOR TO STARTING CONSTRUCTION.
- ALL DIMENSIONS ARE TO GRID LINES, FACE OF STUD FRAMING, FACE OF EXISTING PARTITIONS OR FACE OF CONCRETE/MASONRY UNITS UNLESS NOTED OTHERWISE.
- PROVIDE GYPSUM BOARD CONTROL JOINTS AT WALLS OVER 30'-0" IN LENGTH. LOCATE ABOVE EDGE OF OPENING WHEN POSSIBLE.
- AT FIRE RATED WALLS WHERE OPENINGS ARE GREATER THAN 16 SQUARE INCHES OR WHERE TOTAL AREA OF OPENINGS EXCEEDS 100 SQUARE INCHES IN 100 SQUARE FEET, WRAP 5/8" TYPE 'X' GYPSUM BOARD BEHIND OPENINGS PER U.L. DESIGN #510.
- FRAME DOOR OPENINGS 4" FROM FACE OF PERPENDICULAR WALL ON HINGE SIDE AND 1'-4" FROM FACE OF PERP. WALL ON LATCH SIDE UNLESS NOTED OTHERWISE.
- THE CONTRACTORS INVOLVED IN THIS PROJECT SHALL BE RESPONSIBLE FOR DESIGNING AND INSTALLING THEIR RESPECTIVE WORK AND SYSTEMS TO MEET ALL APPLICABLE FEDERAL, STATE, AND LOCAL CODES, LAWS, SAFETY REGULATIONS AND HAZARDOUS WASTE LAWS. THE CONTRACTORS SHALL FURNISH ALL NECESSARY PERMITS.
- PROVIDE MOISTURE RESISTANT GYPSUM BOARD IN ALL RESTROOMS AND WET AREAS.
- THE CONTRACTOR SHALL REVIEW THE DRAWINGS AND UNDERSTAND THE SCOPE OF THE DRAWINGS TO BE THE FOLLOWING: THESE CONSTRUCTION DOCUMENTS (DRAWINGS, SPECIFICATIONS, ADDENDA) INDICATE THE GENERAL SCOPE OF THE PROJECT IN TERMS OF ARCHITECTURAL DESIGN CONCEPTS, THE DIMENSION OF THE BUILDING, THE MAJOR ARCHITECTURAL ELEMENTS, AND THE MAJOR STRUCTURAL, MECHANICAL, AND ELECTRICAL SYSTEMS. THE DOCUMENTS DO NOT AND ARE NOT INTENDED TO INDICATE OR DESCRIBE IN DETAIL ALL THE NECESSARY WORK REQUIRED FOR FULL PERFORMANCE OF, AND COMPLETION OF THE REQUIREMENTS OF THE CONTRACT, ON THE BASIS OF THE GENERAL SCOPE INDICATED IN THESE DOCUMENTS, THE TRADE CONTRACTOR SHALL FURNISH ALL ITEMS REQUIRED FOR THE PROPER EXECUTION AND COMPLETION OF THE WORK. ALL WORK SHALL BE COMPLETE IN EVERY DETAIL AND THE CONTRACTORS SHALL PROVIDE A ONE YEAR WARRANTY FOR THEIR WORK.
- DO NOT SCALE DRAWINGS. DIMENSIONS SHALL GOVERN EACH BUILDING COMPONENT LOCATION. BRING ANY DISCREPANCIES TO THE ARCHITECT'S ATTENTION IN WRITING IMMEDIATELY.
- FIRE EXTINGUISHER CABINET LOCATIONS SHOWN ARE SUGGESTED LOCATIONS ONLY. FIRE EXTINGUISHERS AND CABINETS TO COMPLY WITH NFPA 101. CONTRACTOR TO VERIFY QUANTITY AND EXACT LOCATIONS WITH VA SAFETY DIRECTOR PRIOR TO INSTALLATION.
- BUILDING FIRST FLOOR REFERENCE ELEVATIONS IS 100'-0".
- ALL WORK SHALL BE PERFORMED IN A SKILLED WORKMANSHIP TYPE AND MANNER ACCEPTABLE TO THE ARCHITECT AND OWNER.
- PROVIDE SHEET METAL OR FIRE RETARDANT WOOD BLOCKING IN WALL CAVITIES FOR ITEMS THAT ARE REQUIRED TO BE SECURED TO THE WALLS.
- TAPE AND SPACKLE ALL PENETRATIONS IN GYPSUM BOARD PARTITIONS, INCLUDING WATER LINES, DRAINS, CONDUIT AND THERMOSTATS. INSTALL FIRE RETARDANT SEALANT AT PENETRATIONS IN RATED PARTITIONS AS REQUIRED.
- CAULK INTERSECTION BETWEEN DIFFERENT MATERIALS.
- CAULK TOILET FIXTURES TO FLOOR PER SEALANT SCHEDULE IN SPECIFICATIONS.
- CAULK ALL COUNTERTOP BACKSPLASHES TO WALL USING SILICONE SEALANT.
- ALL NEW INTERIOR FINISHES, INCLUDING FLOOR, WALL, AND CEILING MATERIALS, SHALL BE IN ACCORDANCE WITH FLAME SPREAD AND SMOKE DEVELOPMENT REQUIREMENTS, CHAPTER 6, CURRENT EDITION OF THE INTERNATIONAL BUILDING CODE AND NFPA 101.
- EXISTING CONDITIONS SHALL BE FIELD VERIFIED PRIOR TO BIDDING OR BEGINNING OF WORK. ANY ERRORS OR OMISSIONS SHALL BE BROUGHT TO THE ATTENTION OF THE ARCHITECT.
- COVER ALL RETURN AIR AND EXHAUST GRILLES WITH FILTER MEDIA FOR DURATION OF JOB AND CHANGE REGULARLY.

ARCHITECTURAL ABBREVIATIONS

A	ARCHITECT/ENGINEER	F	FACE TO FACE	MLDG	MOLDING	SYM	SYMBOL
A/E	ACOUSTICAL	F/F	FIBERBOARD	MLWK	MILLWORK	SYS	SYSTEM
ACUS	ACOUSTICAL CEILING	FBD	FOUNDATION	MTD	MOUNTED	T	TONGUE AND GROOVE
ACP	ACoustical PANEL	FDN	FIRE EXTINGUISHER	MTGS	MOUNTING	T&G	TONQUE AND GROOVE
ACT	ACOUSTICAL CEILING TILE	FE	FIBERGLASS	MULL	MULLION	TAFS	TEXTURE APPLIED FINISH
ADA	AMERICANS WITH DISABILITIES ACT	FGL	FIBERGLASS	MULT	MULTIPLE	TF	TOWEL BAR
ADD	ADDENDUM	FHC	FIRE HOSE CABINET	N	NOT APPLICABLE	TD	TOWEL DISPENSER
ADJ	ADJUNCT	FIN	FINISH	NA	NAPKIN DISPENSER	TDR	TOWEL DISPENSER / RECEPTACLE
AF	ABOVE FINISH FLOOR	FIN FL	FINISHED FLOOR	NIC	NOT IN CONTRACT	TEL	TELEPHONE
ALT	ALTERNATE	FLOR	FLOURESCENT FLOORING	NOM	NOMINAL	TEMP	TEMPORARY
ALUM	ALUMINUM	FLR (FLRG)	FACE OF CONCRETE	NTS	NOT TO SCALE	TF	TOP OF FOOTING
ANOD	ANODIZED	FOF	FACE OF FINISH	O	OUT TO OUT	THRES	THRESHOLD
ARCH	ARCHITECT (URAL)	FOM	FACE OF MASONRY	O/O	OUT TO OUT	TJ	TOP OF JOIST
B	BETWEEN	FOS	FACE OF STUD	OC	ON CENTER	TOT	TOTAL
BET	BULKHEAD	FR	FIRE RATING	OD	OUTSIDE DIAMETER	TPH	TOILET PAPER HOLDER
BH	BUILDING BLOCK	FTG	FOOTING	OF	OUTSIDE FACE	TSL	TOP OF SLAB
BLDG	BLOCKING	FURN	FURNITURE	OF	OWNER FURNISHED - CONTRACTOR INSTALLED	TST	TOP OF STEEL
BLK	BLOCKING	FURR	FURRING	OF	OVERHEAD	TYP	TYPICAL
BLKG	BEAM	G	GALVANIZED	OH	OPENING	U	UNIFORM
BM	BOTTOM	GDR	GUARDRAIL	OPNG	OPPOSITE	UNO	UNLESS NOTED OTHERWISE
BOT	BRACING	GUT	GUTTER	OPP HAND	OPTIONAL	UR	URINAL
BRG	BRICK	GYP BD/GWB	GYPSUM BOARD	OPT	OVERFLOW ROOF DRAIN	V	VINYL BASE
C	CENTER TO CENTER	H	HAND(CARPED)	ORD	ORIGINAL	VCT	VINYL COMPOSITION TILE
CAB	CABINET	HC	HOLLOW CONCRETE MASONRY UNIT	ORIG	ORIGINAL	VERT	VERTICAL
CB	CORNER BEAD	HCMU	HOLLOW CORE WOOD	P	PERIMETER	VIN	VINYL
CER	CERAMIC	HOW	HOLLOW METAL	PERM	PERMANENT	VTL	VINYL TILE
CF	CUBIC FOOT	HOWEHDW	HOLLOW METAL DOOR	PH	PHASE	VWC	VINYL WALL COVERING
CFCI	CONTRACTOR FURNISHED / CONTRACTOR INSTALLED	HMD	HANDRAIL	PL	PLATE	W	WALL TO WALL
CGD	CORNER GUARD	HMDR	HORIZONTAL	PLAM	PLASTIC LAMINATE	WW	WATER CLOSET
CHAN	CHANNEL	HT	HEIGHT	PLAS	PLASTIC	WC	WOOD
CJ	CONTROL JOINT	HVAC	HEATING, VENTILATION, AIR CONDITIONING	PLBG	PLUMBING	WD	WINDOW
CL	CENTER LINE	ICF	INSULATED CONCRETE FORM	PLYWD	PLYWOOD	WDW	WALL-HUNG
CLG	CEILING	ID	INSIDE DIAMETER	PANEL	PANEL	WT	WEIGHT
CMU	CONCRETE MASONRY UNIT	IF	INSIDE FACE	PRCST	PREFAB		
CNTR	COUNTER	INCAND	INCANDESCENT	PREFIN	PREFINISHED		
COLM	COLUMN	INDIC	INDICATE	PRELIM	PRELIMINARY		
CONC	CONCRETE	INS ALUM	INSULATED ALUMINUM	PRKG	PARKING		
CONSTR	CONSTRUCTION	INSTL	INSTALL(ATION)	PROJ	PROJECT		
CONT	CONTINUOUS	INSUL	INSULATION	PT	PRETREATED		
CP/CP	CARPET	INT	INTERIOR	PTD	PARTITION		
CRS	COLD ROLLED STEEL	J	JOIST	QT	QUARRY TILE		
CRS	COURSE	JST	JOINT	R	RADIUS		
CRTN	CURTAIN	JT	JOINT	RD	ROOF DRAIN		
CSMT	CASEMENT	K	KICKPLATE	REC	RECESSED		
CSWK	CASEWORK	KPL	KICKPLATE	RECPT	RECEPTACLE		
CUB	CUBICLE	L	LAMINATION	REF	REFERENCE		
D	DEMOLITION	LAM	LAMINATION	REINF	REINFORCE(D)(ING)(M ENT)		
DF	DRINKING FOUNTAIN	LAV	LAVATORY	REQD	REQUIRED		
DFR	DOOR FRAME	LD BRG	LOAD BEARING	RESIL	RESILIENT		
DIFF	DIFFUSER	LDG	LANDING	RFG	ROOFING		
DIM	DIMENSION	LF	LINEAR FOOT	RLG	RAILING		
DISP	DISPENSER	LRV	LOUVERED ROOF VENT	RM	ROOM		
DLV	DOOR LOUVER	LTG	LIGHTING	RND	ROUND		
DO	DOOR OPENING	LTWT	LIGHTWEIGHT	RO	ROUGH OPENING		
DS	DOWNSPOUT	LVR	LOUVER	RTU	ROOF TOP UNOT		
DT	DRAIN TILE	M	MASONRY	S	SANITARY		
DWG	DRAWING	ELS	ELEVATION	SCW	SOLID CORE WOOD		
E	ELECTRICAL HAND DRYER	ELEV	ELEVATOR	SF	SQUARE FOOT		
EHD	ELECTRICAL HAND DRYER	ENCL	ENCLOSURE	SP	STAND PIPE		
EJ	EXPANSION JOINT	ENGR	ENGINEER	MBRN	MEMBRANE		
EL	ELEVATION	ESMT	EASEMENT	MECH	MECHANICAL		
ELEC	ELECTRICAL	EW	ELECTRICAL WATER COOLER	MED	MEDICINE (MEDICAL)		
ELEV	ELEVATOR	EXT	EXTENDING	MIN	MINIMUM		
ENCL	ENCLOSURE	EXT	EXTENDER	MIR	MIRROR		
ENGR	ENGINEER	MISC	MISCELLANEOUS	MIS	MISCELLANEOUS		
EQUIP	EQUIPMENT						
ESMT	EASEMENT						
EW	ELECTRICAL WATER COOLER						
EXT	EXTENDING						

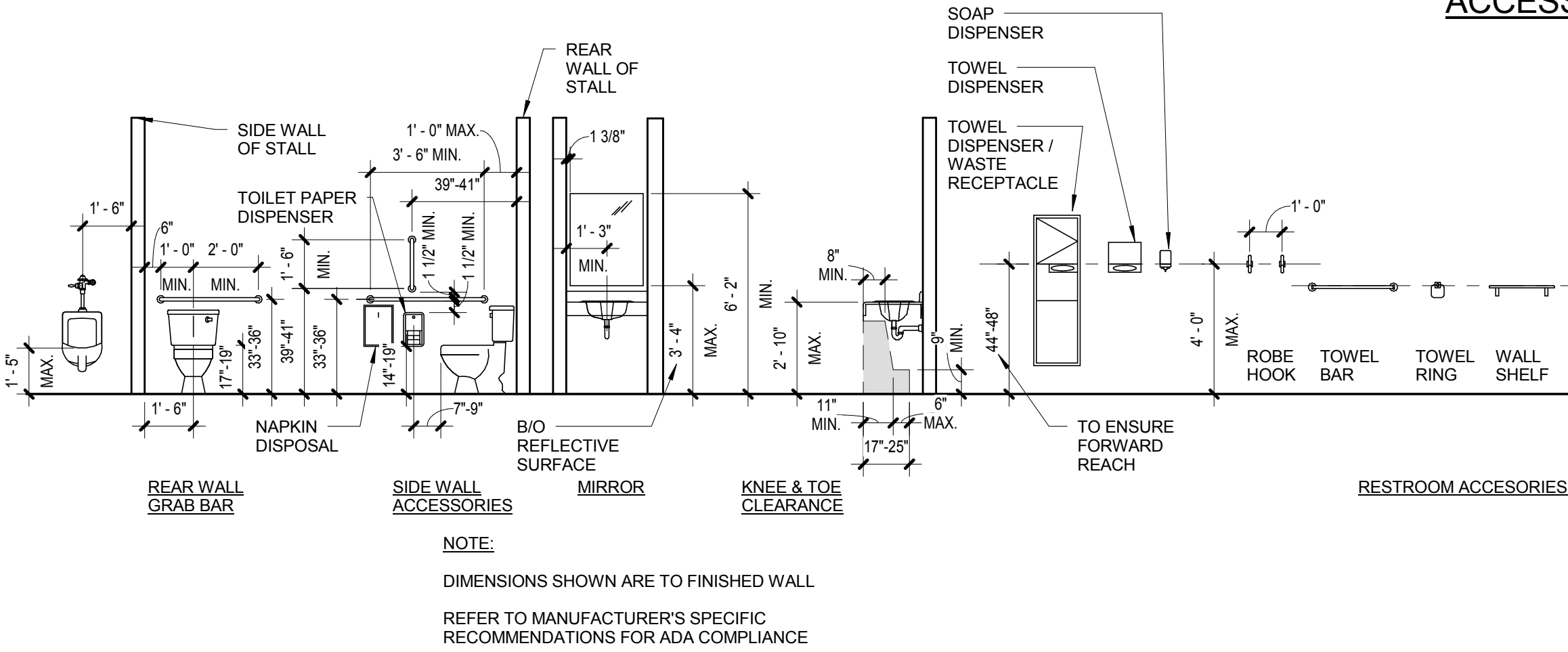
INTERIOR PARTITION LEGEND



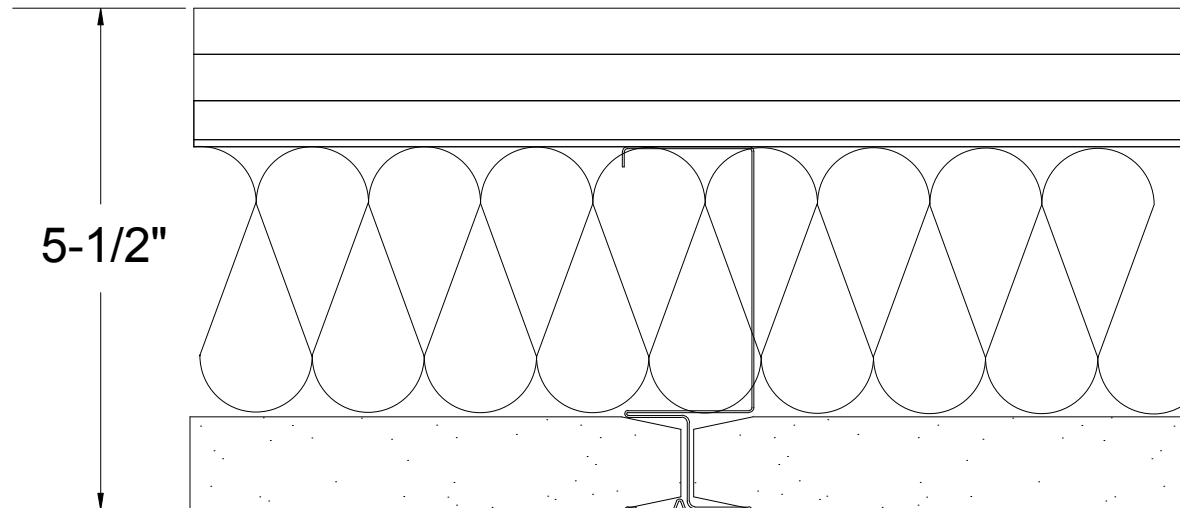
GRAPHIC LEGEND

	COLUMN GRID EXISTING		WINDOW TAG
	COLUMN GRID NEW		DOOR TAG
	NORTH ARROW		KEYED NOTE
	WALL SECTION CUT REFERENCE		ELEVATION DATUM REFERENCE
	DRAWING NUMBER / SHEET NUMBER		REVISION REFERENCE
	BUILDING SECTION CUT REFERENCE		WALL TYPE REFERENCE
	ELEVATION REFERENCE		EQUIPMENT TAG
	DRAWING NUMBER / SHEET NUMBER		
	ENLARGED DRAWING REFERENCE		
	ROOM NAME AND NUMBER		

ACCESSORY MOUNTING HEIGHTS



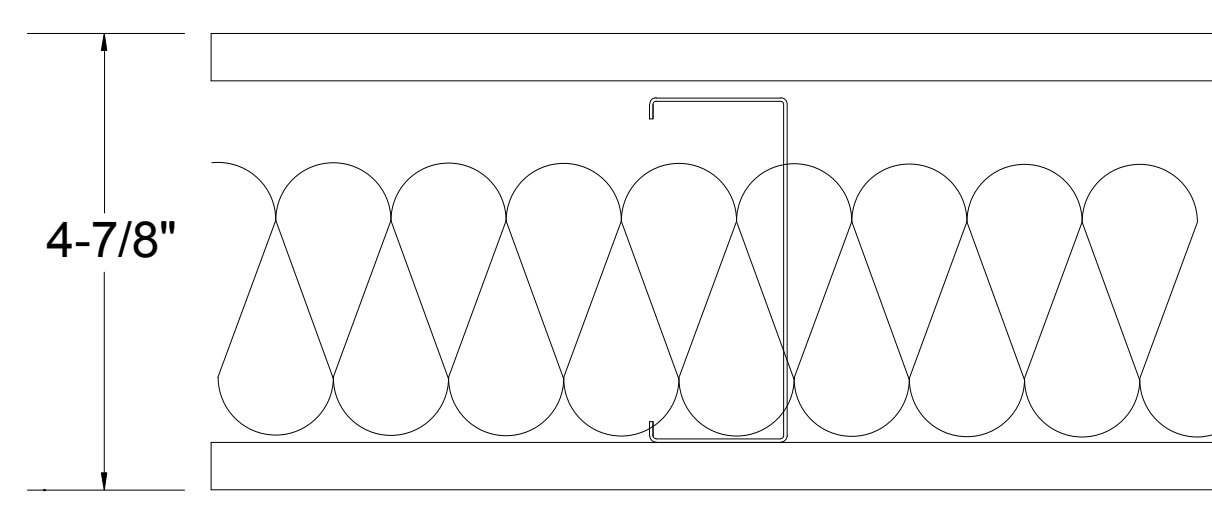
NOTE:
DIMENSIONS SHOWN ARE TO FINISHED WALL
REFER TO MANUFACTURER'S SPECIFIC
RECOMMENDATIONS FOR ADA COMPLIANCE



System Performance
2 HR Fire
UL Design No. U415 System F
STC 53 Sound
USG-040909

System Description
Shaft Wall (Non-loadbearing)

- 1/2" SHEETROCK Brand FIRECODE C Core Gypsum Panels
- RC-1 resilient channel 24" o.c.
- 4" USG C-H Stud 25 gauge 24" o.c.
- 3" mineral wool batt
- 1" SHEETROCK Brand Gypsum Liner Panel



System Performance
1HR Fire
UL Design No. U419 or MEA 81-98-M
49 STC
SA-870717

System Description
Steel Stud Partition (Non-loadbearing)

- 5/8 in. thick gypsum board applied vertically or horizontally.
- 3-5/8" 20 gauge steel stud 24" o.c.
- 3" mineral wool batt
- 5/8 in. thick gypsum board applied vertically or horizontally.

100% SUBMITTAL
FULLY SPRINKLERED

Revision #	Description	Date
1	65% DESIGN DEVELOPMENT	1-23-15
2	95% CONSTRUCTION DOCUMENTS	2-25-15
3	100% SUBMITTAL DOCUMENTS	5-29-15
4	BID DOCUMENTS	9-25-15

VA
United States Department of Veterans Affairs
R. L. Roudebush VAMC
1481 West 10th Street
Indianapolis, Indiana 46202

ARCHITECT/ENGINEERS:

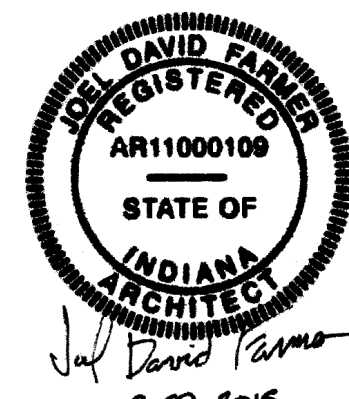
AMERICAN
STRUCTUREPOINT
INC.
7260 SHADELAND STATION
INDIANAPOLIS, IN 46256-3957
TEL 317.547.5580 FAX 317.543.0270
www.structurepoint.com

APOGEE
Consulting Group

W2
DESIGN

CONSULTANTS

USFin Development, LLC
1105 West Weir Street
Litchfield, IL 62056



ABBREVIATIONS & UL RATINGS

Approved: Project Director

Project Title
EXPAND SPECIALTY
CARE

Location
R. L. Roudebush VAMC, Indianapolis, IN

Date
09-25-15

Checked
FF

Drawn
APN

Project Number
V.A. 583-331

Building Number
1

Drawing Number
1-GI-002
11FY14

Office of
Construction
and Facilities
Management

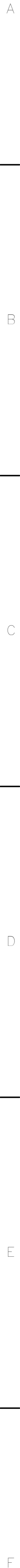
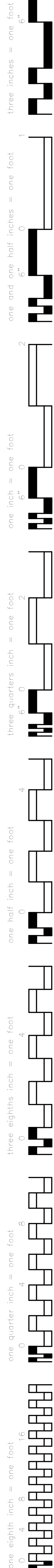
VA Department of Veterans Affairs



FIRE EXT. CABINET ELEVATION

6TH-LIFE SAFETY REFERENCE CODES
100% SUBMITTAL
FULLY SPRINKLERED

REVISIONS			ARCHITECT/ENGINEERS:			CONSULTANTS						Drawing Title			Project Title			Project Number			Office of Construction and Facilities Management		
Revision #												Description			Date			SIXTH FLOOR-LIFE SAFETY PLAN					
												Approved: Project Director			Location			Building Number					
SUBMISSIONS															R. L. Roudebush VAMC, Indianapolis, IN			1					
65% DESIGN DEVELOPMENT			1-23-15												Date			1-LS-001					
65% CONSTRUCTION DOCUMENTS			2-25-15												09-25-15			11FY14					
100% SUBMITTAL DOCUMENTS			5-29-15												Checked								
BID DOCUMENTS			9-25-15												FF								
															Drawn								
															APN								
			United States Department of Veterans Affairs						7260 SHADELAND STATION INDIANAPOLIS, IN 46226-3957 TEL 317.547.5580 FAX 317.543.0270 www.structurepoint.com									USFin Development, LLC 1105 West Weir Street Litchfield, IL 62056					
1481 West 10th Street Indianapolis, Indiana 46202																							



1/8" TO 1/4" TO EEC HANDLE

FIRE EXT. CABINET ELEVATION

100% SUBMITTAL
FULLY SPRINKLERED

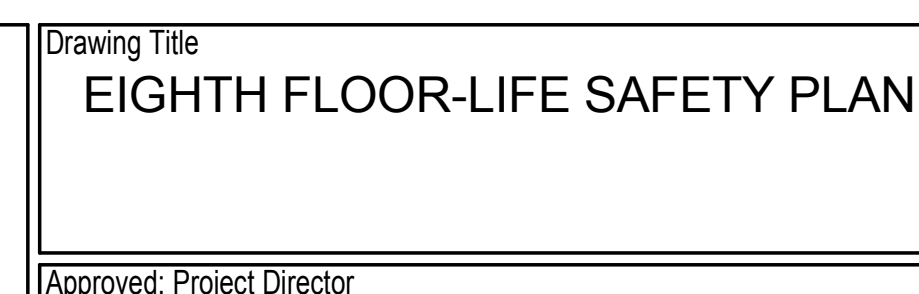
	<p>United States Department of Veterans Affairs R. L. Roudebush VAMC 1481 West 10th Street Indianapolis, Indiana 46202</p>
---	---

**AMERICAN
STRUCTUREPOINT
INC.**

7260 SHADELAND STATION
INDIANAPOLIS, IN 46256-3951
TEL 317.547.5580 FAX 317.543.0276
www.structurepoint.com



USFin Development, LLC
1105 West Weir Street
Litchfield, IL 62056



Location R. L. Roudebush VAMC, Indianapolis, IN		
Date 09-25-15	Checked EE	Drawn APN

Drawing Number	1-LS-002 11FY14
----------------	--------------------

VA Department of
Veterans Affairs