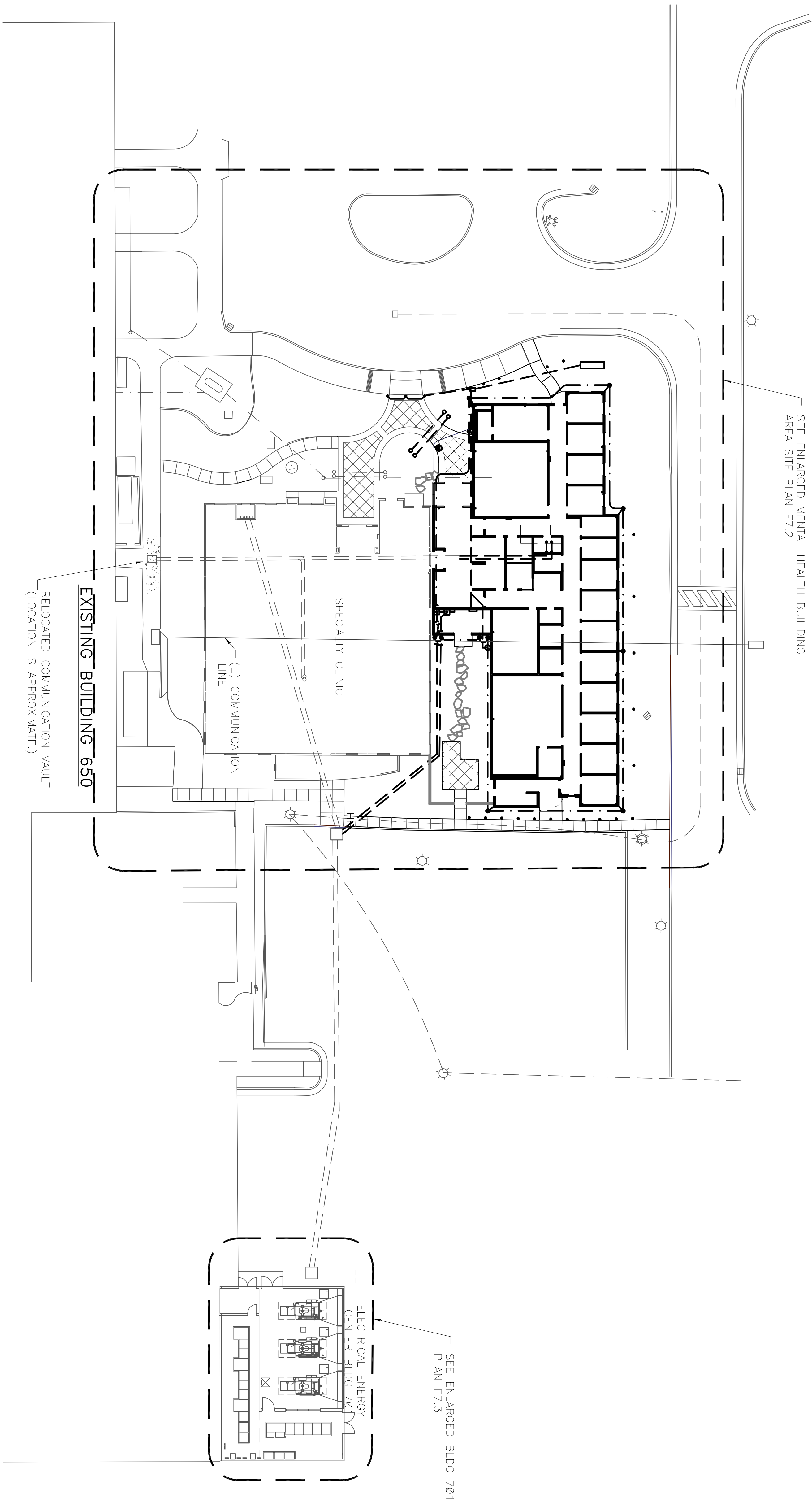
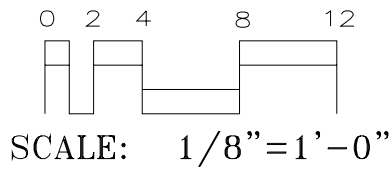
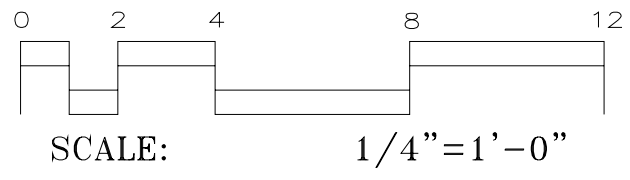
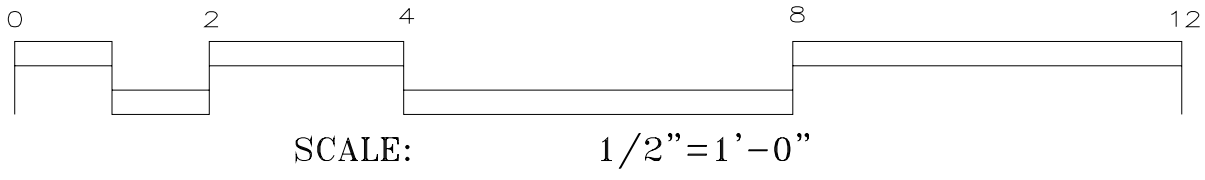
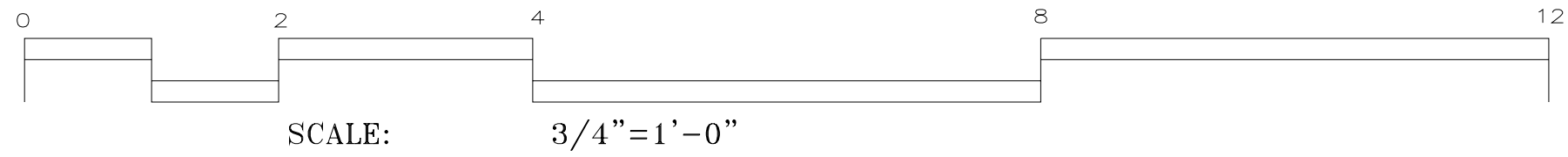
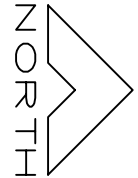


- GENERAL NOTES:**
1. CONDUITS TO 2ND FLOOR RUN UP INSIDE 6" WALL AND OVER THE CEILING.



**ELECTRICAL SITE PLAN**

SCALE: 1" = 20'-0"



|            |                                     |                             |                 |
|------------|-------------------------------------|-----------------------------|-----------------|
| Revisions: | Drawing Title:                      | Project Title:              | Date:           |
|            | <b>ELECTRICAL SITE PLAN</b>         | <b>MENTAL HEALTH CLINIC</b> | <b>08/16/06</b> |
| Approved:  | Approved: Medical Center Director   | Drawn:                      | DRAWING No.     |
| Approved:  | Approved: Civil Engineering Service | 06/29/06                    | <b>E7.1</b>     |
|            |                                     | Checked:                    | Swp. 01         |
|            |                                     | AL                          |                 |

K.F. DAVIS ENGINEERING, INC  
530 LA GONDA WAY, SUITE E  
DANVILLE, CA 94526

