

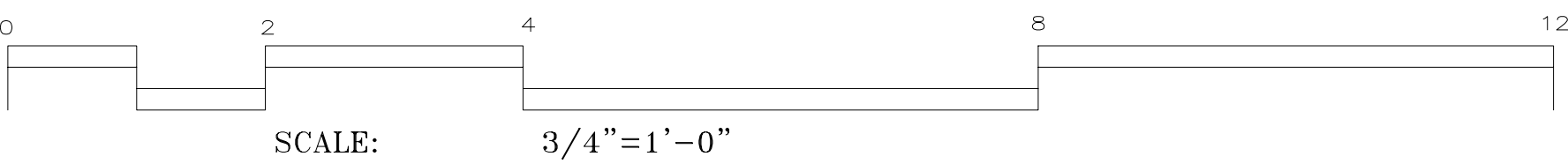
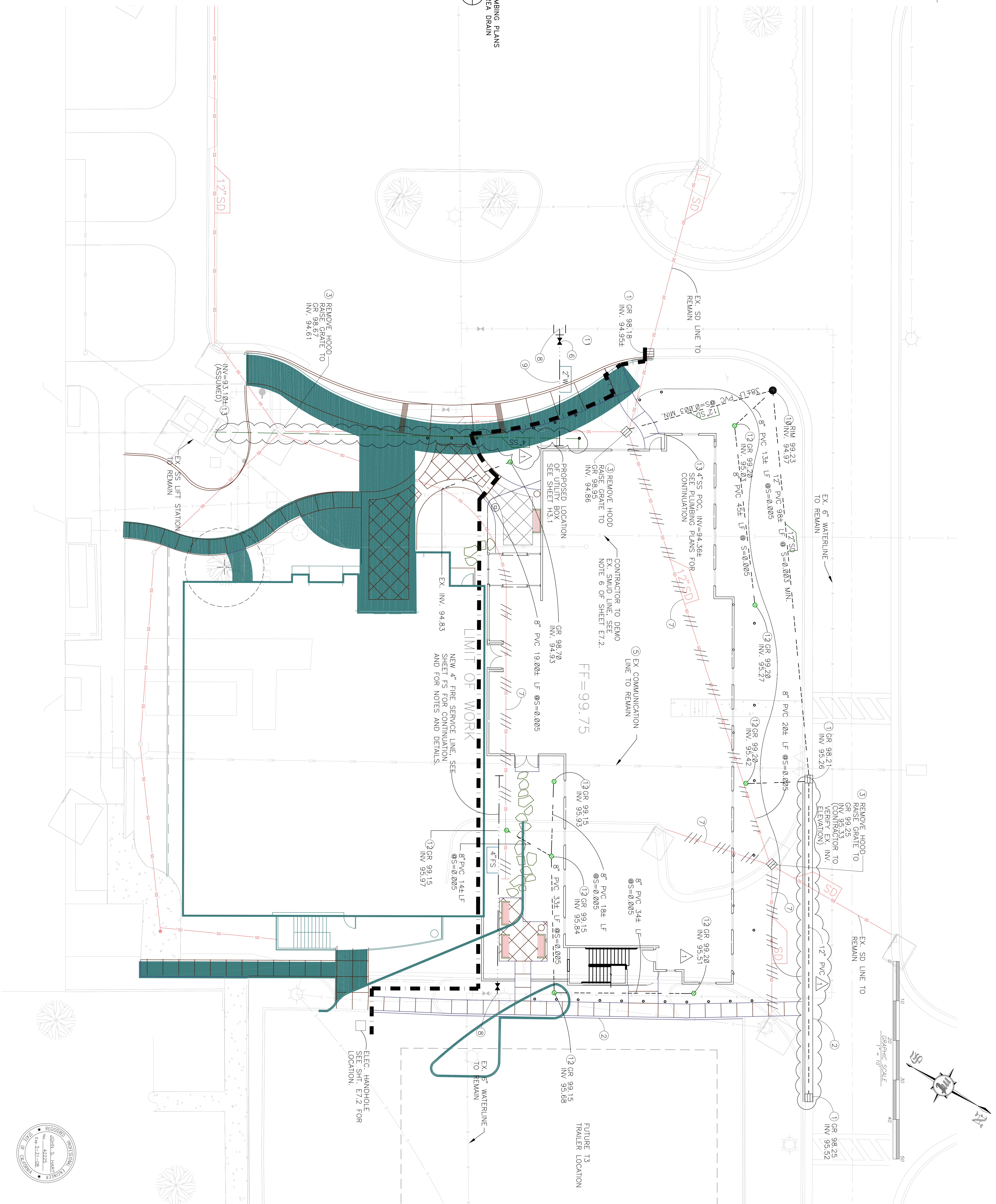
## CONSTRUCTION NOTES

- ① INSTALL HOODED CATCH BASIN PER  $\frac{6}{CA.1}$
- ② INSTALL CONCRETE CURB & GUTTER PER  $\frac{1}{CA.1}$
- ③ MODIFY EX GRATE TO STANDARD DRAIN INLET PER  $\frac{5}{CA.1}$
- ④ INSTALL STD DRAIN INLET PER  $\frac{5}{CA.1}$
- ⑤ PROTECT EXISTING COMMUNICATION LINE WITH 3'-x5" SLAB PLACED 6" MIN ABOVE LINE. CONTRACTOR TO VERIFY 36" EXISTING COVER. SLAB SHALL BE DISCONTINUOUS AT ALL FOOTINGS. SEE DETAIL  $\frac{4}{CA.1}$
- ⑥ INSTALL GATE VALVE WITH BOX PER  $\frac{2}{CA.1}$
- ⑦ REMOVE EXISTING STORM DRAIN PIPE
- ⑧ POINT OF CONNECTION TO EXISTING WATERLINE
- ⑨ REPAIR TRENCH SECTION PER  $\frac{3}{CA.1}$
- ⑩ INSTALL STORM DRAIN MANHOLE PER  $\frac{7}{CA.1}$
- ⑪ INSTALL SURFACE CLEANOUT PER  $\frac{8}{CA.1}$
- ⑫ INSTALL TYPE 1 AREA DRAIN PER  $\frac{10}{CA.1}$
- ⑬ THE INVERTS AT THESE TWO LOCATIONS ARE ASSUMED. CONTRACTOR TO VERIFY AT SITE IF SHOWN 4" SS PIPE WILL WORK WITH EXISTING SS LIFT STATION.

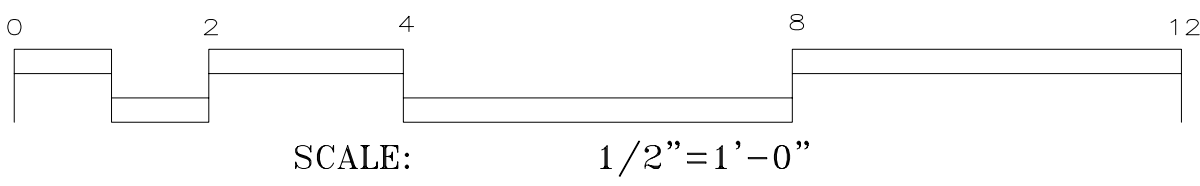
NOTE:

1. FOR RAIN WATER LEADERS: REFER TO ARCHITECTURAL AND PLUMBING PLANS FOR LOCATIONS AND DETAILS. TAP RAIN WATER LEADERS TO AREA DRAIN PIPING NETWORK SHOWN. PROVIDE CLEANOUT PER DETAIL
- 9

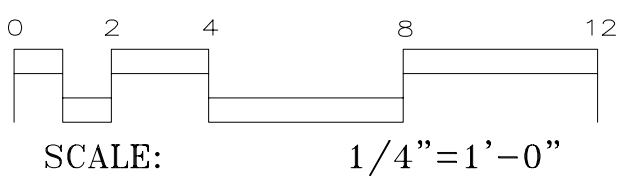
C4.1



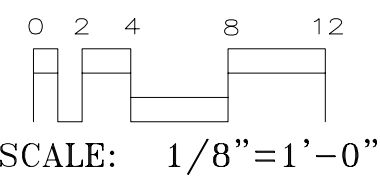
SCALE:  $3/4"=1'-0"$



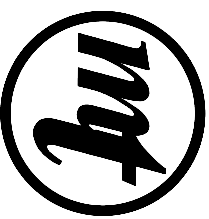
SCALE: 1/2"=1'-0"



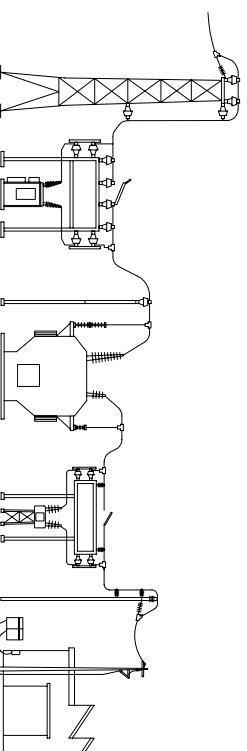
SCALE:  $1/4"=1'-0"$



SCALE:  $1/8" = 1' - 0"$



**MARK THOMAS & COMPANY, INC.**  
7300 FOLSOM BOULEVARD, SUITE 203  
SACRAMENTO, CALIFORNIA 95826



K.F. DAVIS ENGINEERING, INC  
530 LA GONDA WAY, SUITE E  
DANVILLE, CA 94526

Revisions:  
 REVISED TO REFLECT AS-BUILT  
 CONDITIONS 7/28/08

Approved:

Approved:

UTILITY PLAN

Director

---

ering Service

Drawn:

Checked:	
----------	--

Project title: MENTAL HEALTH

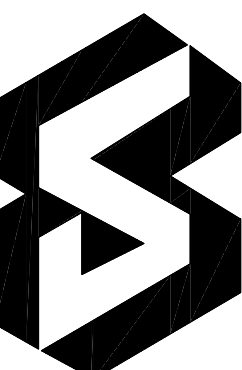
Building Number:

Location: VA

Date: 08/16/06

DRAWING NO.

○  
○  
●  
—

Department of  
Veterans Affairs