

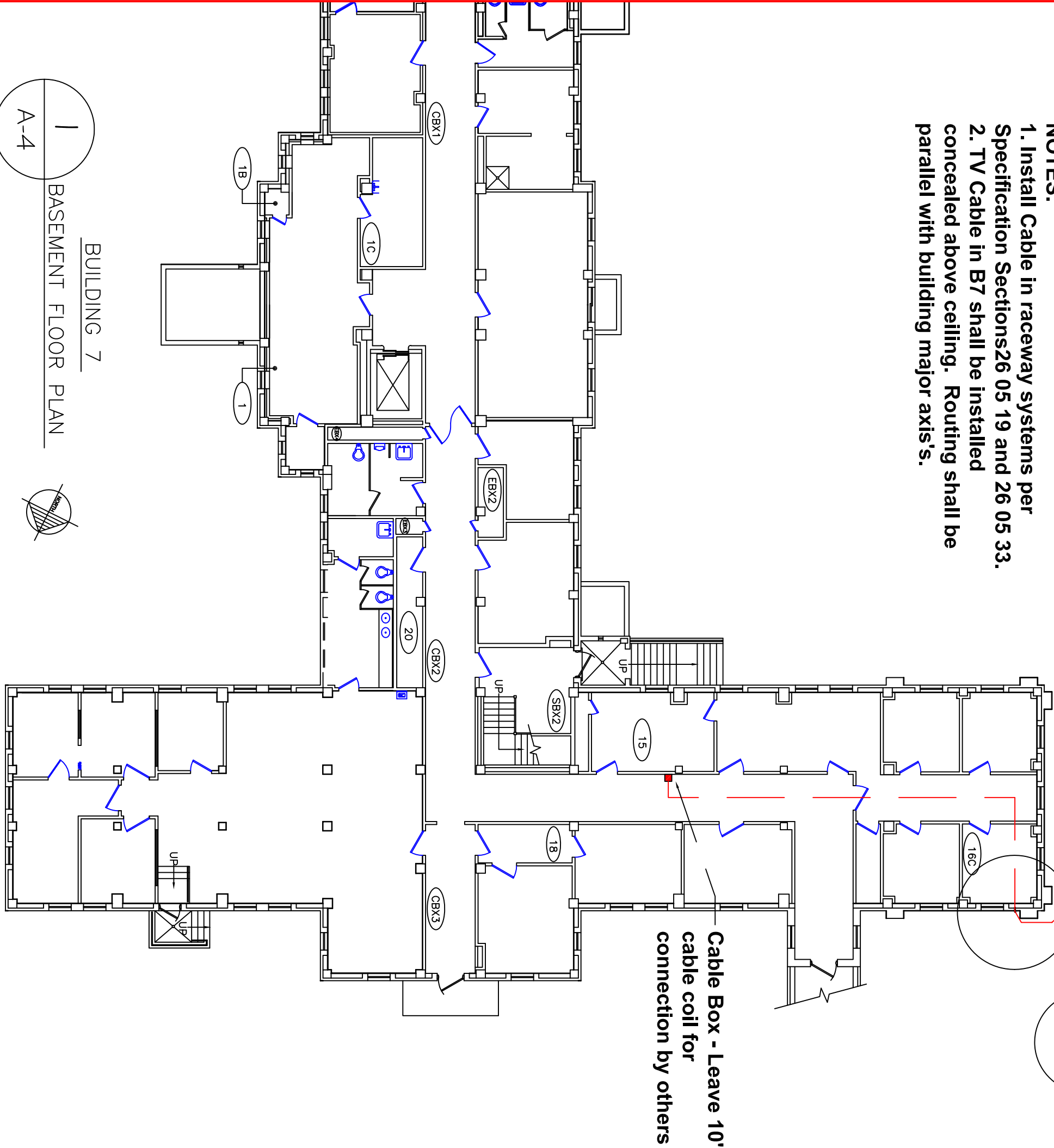
2 B-134 Plan View Outline  
A-4

F&I New TV Cable with concealed  
roughing, box, outlet plate and finished  
connection at 18" AFF on interior North  
wall of B134. Location by COR.

3  
A-4

4  
A-4

- NOTES:**
1. Install Cable in raceway systems per Specification Sections 26 05 19 and 26 05 33.
  2. TV Cable in B7 shall be installed concealed above ceiling. Routing shall be parallel with building major axis's.



1  
A-4

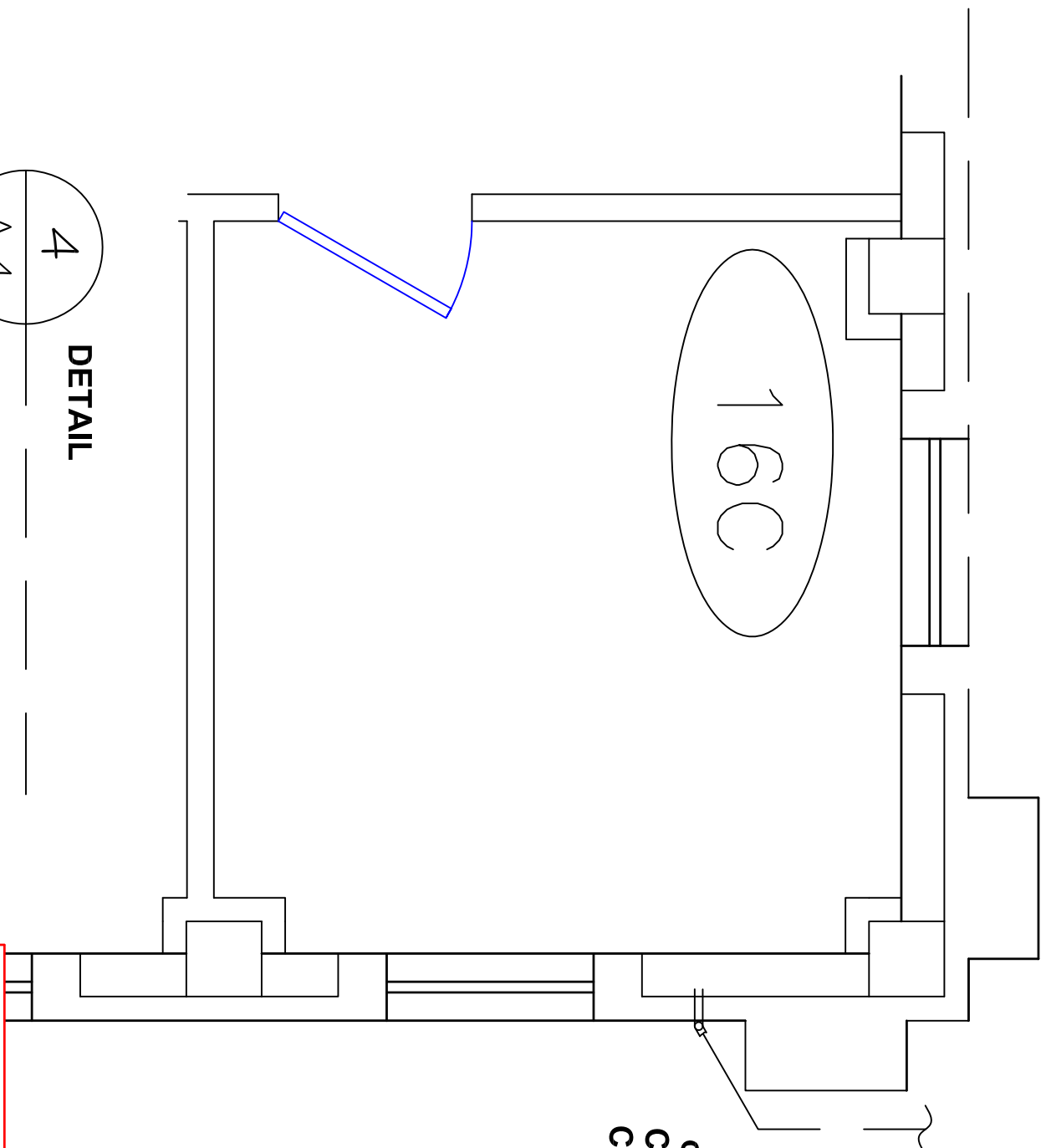
BUILDING 7  
BASEMENT FLOOR PLAN

3  
A-4

**DETAIL**  
Room 16C - NW Corner B7G

4  
A-4

**DETAIL**  
Room 16C - NW Corner B7G



To B134 - 1-1/4" Existing  
conduit w/ 1 Telephone & 3  
Cat 5 Cables - Install new TV  
Cable. Install new pull string  
to remain for future use.

TO B7  
1-1/4" Conduit w/ 1  
Telephone & 3 Cat 5  
Cables - No existing  
pull string

Project Title		REV 4-18-16	528A5-15-509
B134 HVAC UPGRADE		Project No.	
Building	Checked	WCC	A4
134 PAVILION			
SHEET	U/G Data Communication	Drawn	5 of 5