

DEPARTMENT OF VETERAN AFFAIRS

STATEMENT OF WORK Dental Equipment

1. BACKGROUND

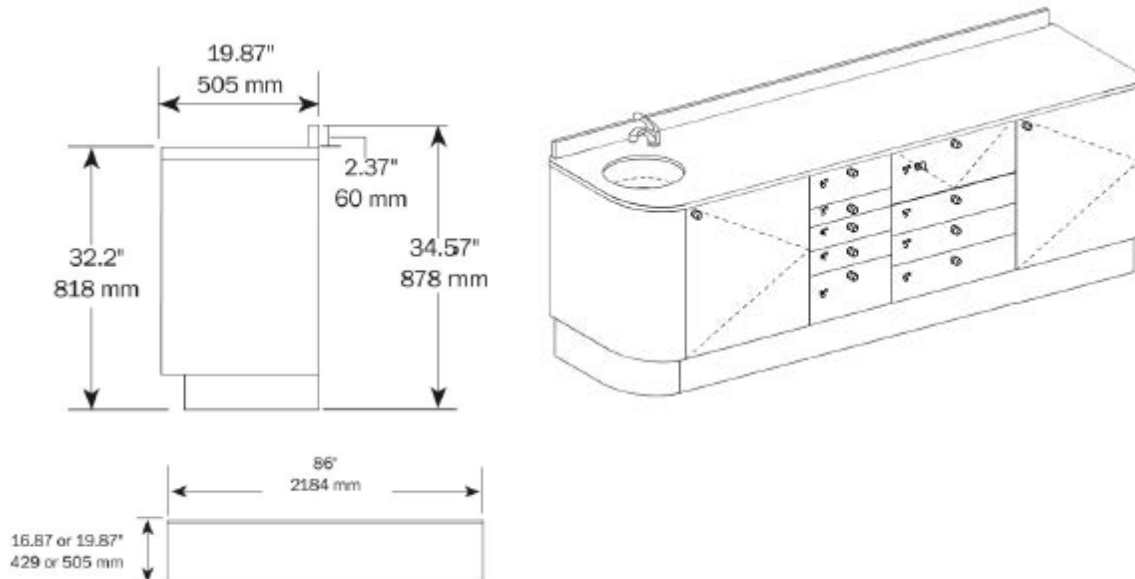
1.1 The Butler VA (529) is constructing a new Health Care Center (HCC) to provide a modern facility to better serve Veteran medical needs. This contract is for the purchase, delivery and installation of A-DEC name brand or equal floor and wall casework for 8 dental operatories on the first floor of the new HCC construction site located at 353 North Duffy Road Butler PA, 16001. All casework shall be shipped directly to the site and shall be installed per manufacturer recommendations. All associated shipping/freight charges and installation wages shall be included.

1.2 DRAWINGS- Refer to attached drawing "AI-302". Standard finished ceiling height is approximately 8'8" in the rooms.

2. SCOPE OF WORK

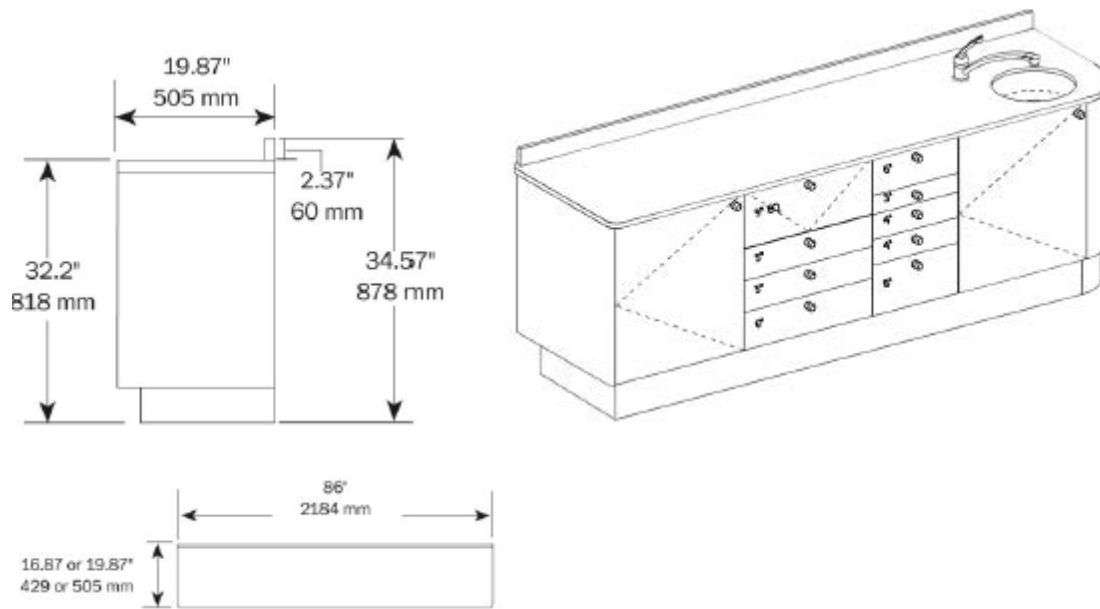
2.1 Provide A-DEC name brand or equal dental casework and labor to deliver and install for 8 dental operatories the new HCC. The provided drawings are final; all casework shall be installed without modifications to the existing structure or utilities. All countertops shall be quartz. Finish color selections are coordinated with the buildings decor and shall be name brand or equal.

2.1 A A-DEC name brand or equal model **5531 Accessory console sink left, 4 EA** shall be provided and installed. The casework shall have but not be limited to the following features and characteristics:



- 1) Model 5531
- 2) Cabinet Width 86" V0011.0005
- 3) Base Only V0066.0002
- 4) Access Type Soft Close V0002.0002
- 5) 19-7/8" Depth V0081.0002
- 6) Foundation Price 5531.86 Accessory Console V0195.0153
- 7) Countertop Color Bora Bora Beige V0067.0128
- 8) Quartz Price V0334.0023
- 9) Accent Color Material Filter Contract Color V0273.0997
- 10) Accent Color Hampton Walnut, Fine Grain Finish, #7959-78 V0097.0322
- 11) Accent Edgebanding Slate Grey Edgebanding V0172.0066
- 12) Accent Edgebanding Slate Grey Edgebanding V0172.0066
- 13) Decor Color Material Filter Contract Color V0273.0997
- 14) Decor Color Hampton Walnut, Fine Grain Finish, #7959-78 V0098.0322
- 15) Decor Edgebanding Slate Grey Edgebanding V0180.0066
- 16) Decor Edgebanding Slate Grey Edgebanding V0172.0066
- 17) Contract Material Fee Contract Color Upcharge-Laminate V0044.0001
- 18) B1 Module Width 28" V0309.0005
- 19) Base Module B1 S1DREAC1 - Round Wash Station V0050.S1DREAC1
- 20) Under mount Stainless Steel Sink V0063.0001
- 21) Sink Left-- Bezel Right V0230.0012
- 22) Chrome Faucet V0039.0003
- 23) No Soap Dispenser Without Cutout V0064.0005
- 24) Back Panel Plumbing Cutout V0312.0200
- 25) Knee-activated Faucet V0134.0015
- 26) B2 Module Width 14" V0309.0007
- 27) Base Module B2 DB5DAC1 - Drawer Bank, 6", 3", 4", 4", 8" V0050.DB5DAC1
- 28) B3 Module Width 21" V0309.0008
- 29) Base Module B3 DB4DAC3 - Drawer Bank, 9,5,5,6 V0050.DB4DAC3
- 30) Drawer Option Equipment Drawer V0363.0007
- 31) B4 Module Width 21" V0309.0008
- 32) Base Module B4 B1DAC1 - Storage V0050.B1DAC1
- 33) B4 Door Hinge Right V0288.0001
- 34) Storage Option 1 Adjustable laminate Shelf V0287.0003
- 35) Storage Option 2 Adjustable laminate Shelf V0287.0003
- 36) Packaging Blanket Wrap V0327.0081
- 37) All compartments shall lock and be keyed alike

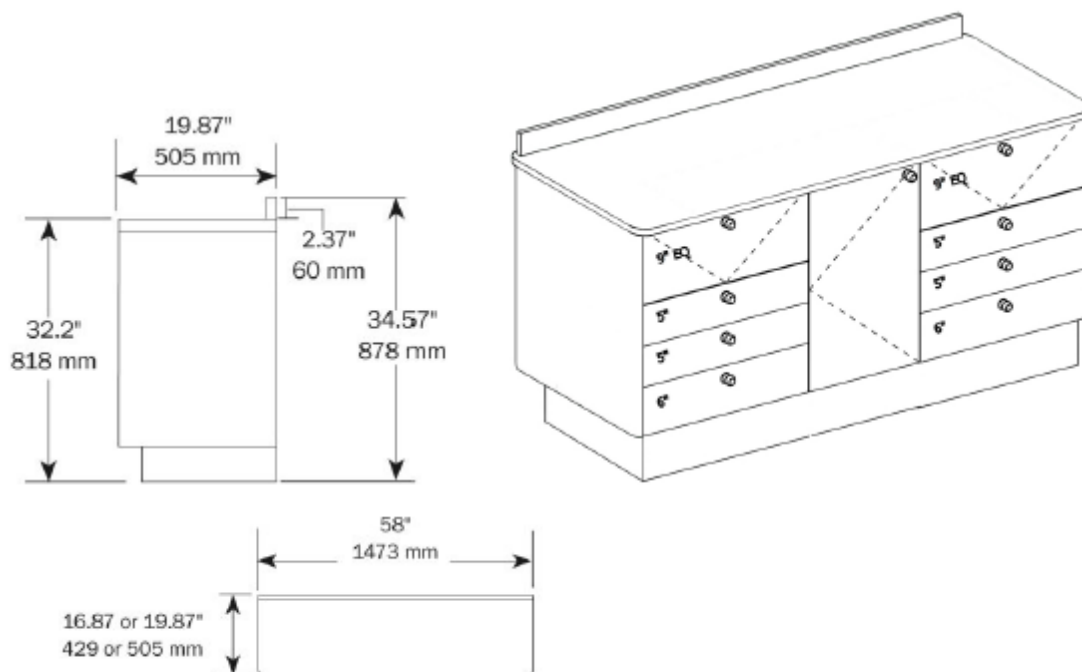
2.1 B A-DEC name brand or equal model **5531 Accessory console sink right, 4 EA** shall be provided and installed. The casework shall have but not be limited to the following features and characteristics:



- 1) Model 5531 5531
- 2) Cabinet Width 86" V0011.0005
- 3) Base Only V0066.0002
- 4) Access Type Soft Close V0002.0002
- 5) 19-7/8" Depth V0081.0002
- 6) Foundation Price 5531.86 Accessory Console V0195.0153
- 7) Countertop Color Bora Bora Beige V0067.0128
- 8) Quartz Price V0334.0023
- 9) Accent Color Material Filter Contract Color V0273.0997
- 10) Accent Color Hampton Walnut, Fine Grain Finish, #7959-78 V0097.0322
- 11) Accent Edgebanding Slate Grey Edgebanding V0172.0066
- 12) Accent Edgebanding Slate Grey Edgebanding V0172.0066
- 13) Decor Color Material Filter Contract Color V0273.0997
- 14) Decor Color Hampton Walnut, Fine Grain Finish, #7959-78 V0098.0322
- 15) Decor Edgebanding Slate Grey Edgebanding V0180.0066
- 16) Decor Edgebanding Slate Grey Edgebanding V0172.0066
- 17) Contract Material Fee Contract Color Upcharge-Laminate V0044.0001
- 18) B1 Module Width 21" V0309.0008
- 19) Base Module B1 B1DAC1 - Storage V0050.B1DAC1
- 20) B1 Door Hinge Left V0288.0002
- 21) Storage Option 1 Adjustable laminate Shelf V0287.0003
- 22) Storage Option 2 Adjustable laminate Shelf V0287.0003
- 23) B2 Module Width 21" V0309.0008
- 24) Base Module B2 DB4DAC3 - Drawer Bank, 9,5,5,6 V0050.DB4DAC3
- 25) Drawer Option Equipment Drawer V0363.0007
- 26) B3 Module Width 14" V0309.0007
- 27) Base Module B3 DB5DAC1 - Drawer Bank, 6", 3", 4", 4", 8" V0050.DB5DAC1
- 28) B4 Module Width 28" V0309.0005
- 29) Base Module B4 S1DREAC1 - Round Wash Station V0050.S1DREAC1

- 30) Under mount Stainless Steel Sink V0063.0001
- 31) Sink Right-- Bezel Left V0230.0013
- 32) Chrome Faucet V0039.0003
- 33) No Soap Dispenser Without Cutout V0064.0005
- 34) Back Panel Plumbing Cutout V0312.0200
- 35) Knee-activated Faucet V0134.0015
- 36) Packaging Blanket Wrap V0327.0081
- 37) All compartments shall lock and be keyed alike

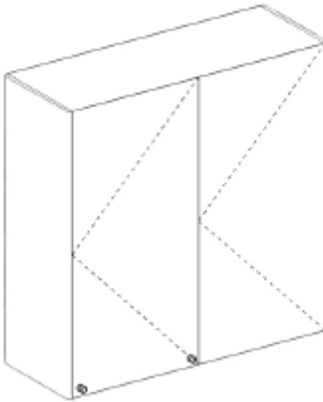
2.1 C A-DEC name brand or equal model **5531 Accessory console no sink, 8 EA** shall be provided and installed. The casework shall have but not be limited to the following features and characteristics:



- 1) Model 5531
- 2) Cabinet Width 58" V0011.0006
- 3) Base Only V0066.0002
- 4) Access Type Soft Close V0002.0002
- 5) 19-7/8" Depth V0081.0002
- 6) Foundation Price 5531.58 Accessory Console V0195.0151
- 7) Countertop Color Bora Bora Beige V0067.0128
- 8) Quartz Price V0334.0021
- 9) Accent Color Material Filter Contract Color V0273.0997
- 10) Accent Color Hampton Walnut, Fine Grain Finish, #7959-78
- 11) V0097.0322
- 12) Accent Edgebanding Slate Grey Edgebanding V0172.0066
- 13) Accent Edgebanding Slate Grey Edgebanding V0172.0066
- 14) Decor Color Material Filter Contract Color V0273.0997

- 15) Decor Color Hampton Walnut, Fine Grain Finish, #7959-78 V0098.0322
- 16) Decor Edgebanding Slate Grey Edgebanding V0180.0066
- 17) Decor Edgebanding Slate Grey Edgebanding V0172.0066
- 18) Contract Material Fee Contract Color Upcharge-Laminate V0044.0001
- 19) B1 Module Width 21" V0309.0008
- 20) Base Module B1 DB4DAC3 - Drawer Bank, 9,5,5,6 V0050.DB4DAC3
- 21) Drawer Option Equipment Drawer V0363.0007
- 22) B2 Module Width 14" V0309.0007
- 23) Base Module B2 B1DAC1 - Storage V0050.B1DAC1
- 24) B2 Door Hinge Left V0288.0002
- 25) Storage Option 1 Slide Out Shelf V0287.0001
- 26) Storage Option 2 Slide Out Shelf V0287.0001
- 27) B3 Module Width 21" V0309.0008
- 28) Base Module B3 DB4DAC3 - Drawer Bank, 9,5,5,6 V0050.DB4DAC3
- 29) Drawer Option Equipment Drawer V0363.0007
- 30) Packaging Blanket Wrap V0327.0081
- 31) All compartments shall lock and be keyed alike
- 32) Label: All Rooms

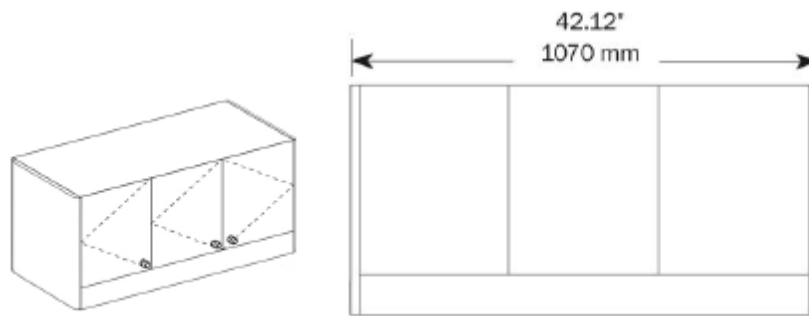
2.1 D A-DEC name brand or equal model **5732 X-Ray Storage Insert, 3 EA** shall be provided and installed. The casework shall have but not be limited to the following features and characteristics:



- 1) Model 5732
- 2) Cabinet Width 49" V0011.0013
- 3) Insert V0066.0025
- 4) Foundation Price 5732.49 Xray Storage V0195.0195
- 5) Lead-- 5732 V0109.0008
- 6) Accent Color Material Filter Contract Color V0273.0997
- 7) Accent Color Hampton Walnut, Fine Grain Finish, #7959-78
- 8) V0097.0322
- 9) Accent Edgebanding Slate Grey Edgebanding V0172.0066
- 10) Accent Edgebanding Slate Grey Edgebanding V0172.0066
- 11) Decor Color Material Filter Contract Color V0273.0997
- 12) Decor Color Hampton Walnut, Fine Grain Finish, #7959-78 V0098.0322
- 13) Decor Edgebanding Slate Grey Edgebanding V0180.0066
- 14) Decor Edgebanding Slate Grey Edgebanding V0172.0066

- 15) Contract Material Fee Contract Color Upcharge-Laminate V0044.0001
- 16) U1 Module Width 49" V0309.0019
- 17) Upper Module U1 5732 - X-Ray Storage Insert V0050.5732
- 18) Packaging Standard (Boxed) V0327.0081
- 19) Label: Rooms 1&2, 3&4, 5&6

2.1 E A-DEC name brand or equal model 5731 **Upper Storage Unit, 16 EA** shall be provided and installed. The casework shall have but not be limited to the following features and characteristics:



- 1) Model 5731
- 2) Cabinet Width 42" V0011.0003
- 3) Wall Mount Upper V0066.0016
- 4) Access Type Soft Close V0002.0002
- 5) 15" Depth V0081.0005
- 6) Foundation Price 5731.42 Upper Storage Unit V0195.0193
- 7) Accent Color Material Filter Contract Color V0273.0997
- 8) Accent Color Hampton Walnut, Fine Grain Finish, #7959-78V0097.0322
- 9) Accent Edgebanding Slate Grey Edgebanding V0172.0066
- 10) Accent Edgebanding Slate Grey Edgebanding V0172.0066
- 11) Decor Color Material Filter Contract Color V0273.0997
- 12) Decor Color Hampton Walnut, Fine Grain Finish, #7959-78 V0098.0322
- 13) Decor Edgebanding Slate Grey Edgebanding V0180.0066
- 14) Decor Edgebanding Slate Grey Edgebanding V0172.0066
- 15) Contract Material Fee Contract Color Upcharge-Laminate V0044.0001
- 16) U1 Module Width 40.5" V0309.0017
- 17) Upper Module U1 U3DWMU - 3 Door Wall Mount Upper V0050.U3DWMU
- 18) None V0167.0001
- 19) Storage Option 1 Adjustable Wood Shelf V0287.0003
- 20) Storage Option 2 Adjustable Wood Shelf V0287.0003
- 21) Packaging Blanket Wrap V0327.0081
- 22) All compartments shall lock and be keyed alike
- 23) Label: (1 Dr. side and 1 Asst. side)

3. Warranty

See (Warranty) attachment. All equipment shall have a warranty at minimum, equal to the attached A-Dec warranty.

4. General Requirements

4.1 The contractor shall provide all labor, equipment, tools, materials, and other items necessary to deliver and install the casework and materials listed in the SOW.

4.2 The provided drawings are final; all equipment shall be installed without modifications to the existing structure or utilities.

4.3 INSPECTION and ACCEPTANCE: Contractor shall inspect all casework after installation to confirm proper operation of doors, drawers, lock, and sink operation. All casework shall be free of scratches and blemishes. The VA shall accept the casework once installation and final inspection has been completed and approved.

4.4 The contractor shall adhere to the job site requirements listed below:

1. All personnel to adhere to site safety requirements – PPE at a minimum to include hard hats, safety glasses, high-visibility clothing, hard sole shoes.
2. All personnel subject to a 30-minute site safety orientation conducted by General contractor (GC).
3. Vendor responsible for unloading, handling, unpacking; clean up to dumpster provided by GC
4. Vendor to schedule deliveries through VA who would in turn schedule with GC. At the time of these deliveries, most if not all products will have to go through the loading dock, so a schedule will be arranged for dock use.
5. VA to obtain and maintain current certificates of insurance for each vendor
6. Vendor responsible for protecting product after installation
7. Standard work hours are Monday – Friday, 7:00 AM – 3:30 PM

5. Installation Dates

Installation of all casework shall be coordinated with the VA and shall take place between 3/21/17 and 3/29/17. No equipment or materials shall be delivered or will be accepted before these dates.