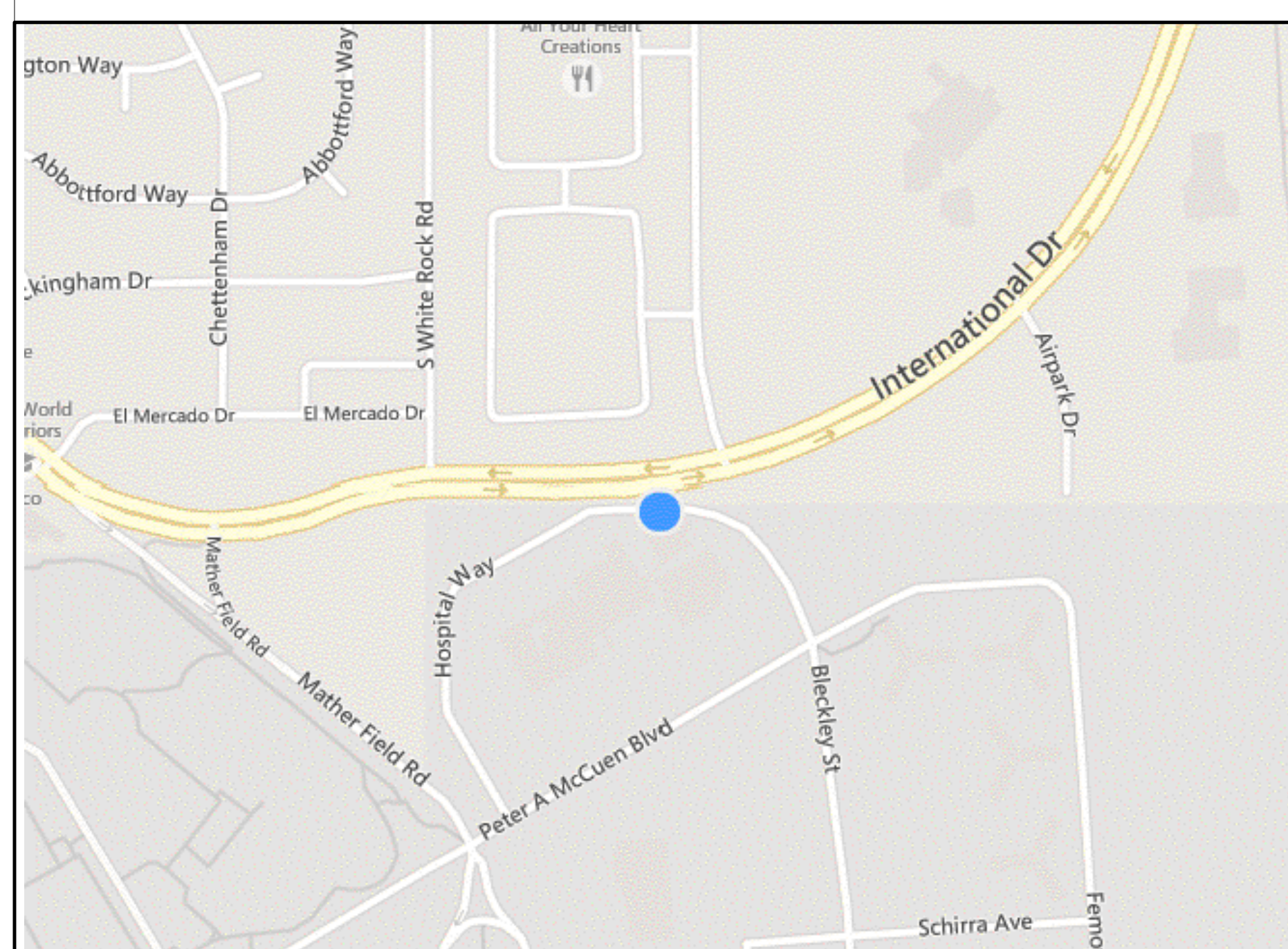


DEPARTMENT OF VETERANS AFFAIRS VA MATHER

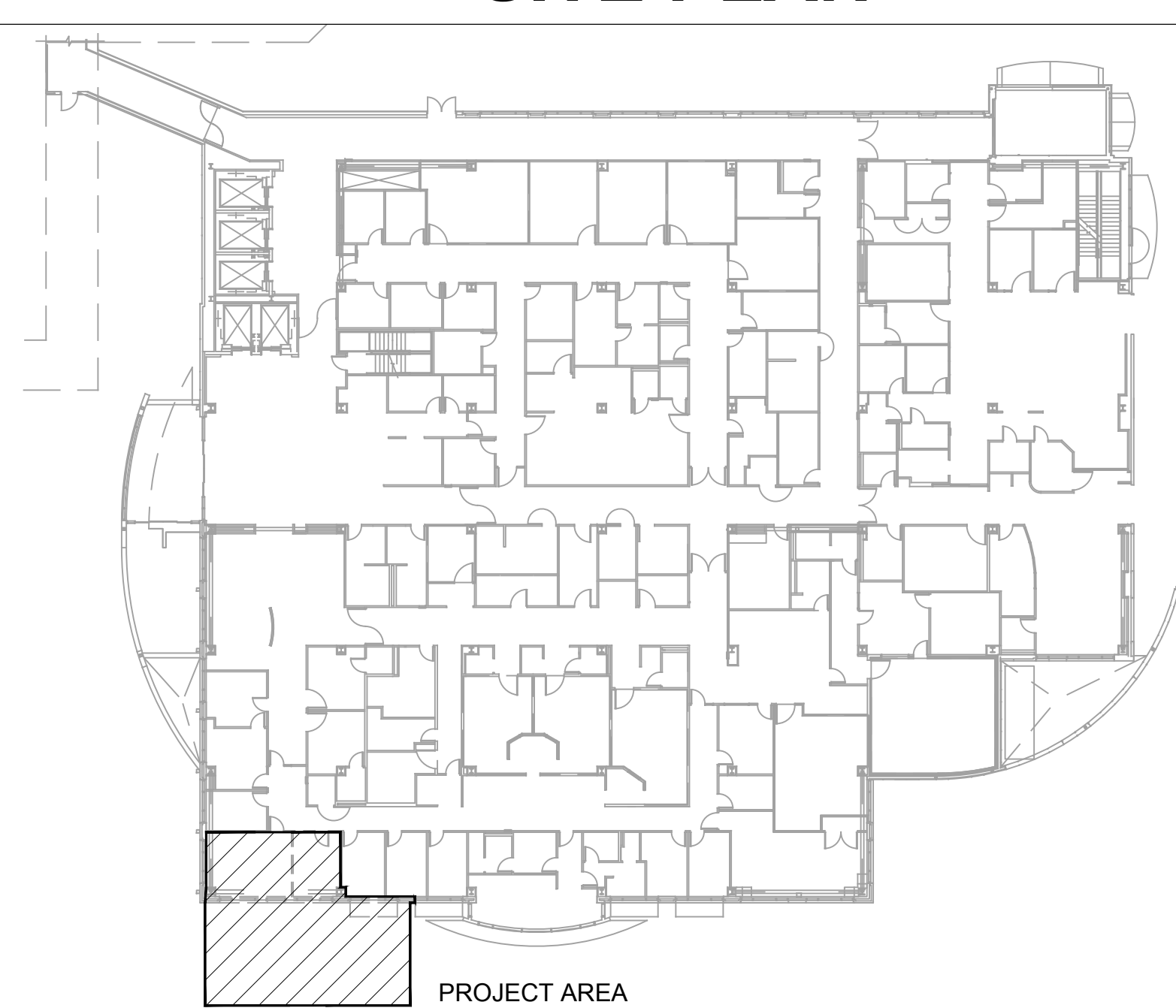
BUILDING 700 1ST FLOOR PREPARE SITE FOR MRI 10535 HOSPITAL WAY, MATHER, CA 95655 PROJECT NUMBER: 612A4-14-014

VICINITY MAP



 10535 HOSPITAL WAY, MATHER, CA
SCALE: NOT TO SCALE

SITE PLAN



 BLDG 700 - PROJECT LOCATION
SCALE: NOT TO SCALE

APPLICABLE CODES

- 2012 NFPA 101 - LIFE SAFETY CODE
- 2012 INTERNATIONAL BUILDING CODE
- 2012 INTERNATIONAL MECHANICAL CODE
- 2012 INTERNATIONAL PLUMBING CODE
- 2012 INTERNATIONAL FIRE CODE
- 2014 NATIONAL ELECTRIC CODE (NFPA 70)
- NFPA NATIONAL FIRE CODES (with the exception of NFPA 5000 and NFPA 900)
- OCCUPATIONAL, SAFETY AND HEALTH ADMINISTRATION (OSHA)
- ENERGY POLICY ACT OF 2005 (EPACT)
- FEDERAL LEADERSHIP IN HIGH PERFORMANCE AND SUSTAINABLE BUILDINGS: MEMORANDUM OF UNDERSTANDING
- EXECUTIVE ORDER 13423: STRENGTHENING FEDERAL ENVIRONMENTAL, ENERGY, AND TRANSPORTATION MANAGEMENT
- THE PROVISIONS FOR CONSTRUCTION AND SAFETY SIGNS, STATED IN THE GENERAL REQUIREMENTS SECTION 01010 OF THE VA MASTER CONSTRUCTION SPECIFICATION

PROJECT DATA

OCCUPANCY TYPE:
BUILDING 700: I-2
(ORIGINAL DESIGN BASED ON 1997 UBC: I.1.1)

CONSTRUCTION TYPE:
BUILDING 700: IIA
(ORIGINAL DESIGN BASED ON 1997 UBC: II-222)

A) EXTERIOR NON-BEARING - NON-COMBUSTIBLE WITH NO OPEN PROTECTION.
B) INTERIOR NON-BEARING (PARTITIONS) - UNPROTECTED NON-COMBUSTIBLE UNLESS OTHERWISE DESCRIBED IN THIS OUTLINE
C) SMOKEZONE WALLS.
(1) 1-HOUR FROM FLOOR TO FLOOR
(2) DOORS
i. SELF-CLOSING OR AUTOMATIC CLOSING
ii. 1-3/4" SOLID BONDED WOOD CORE
(3) OTHER OPENINGS
i. DAMPERS NOT PROVIDED ON DUCT PENETRATION OF SMOKE PARTITIONS BECAUSE HVAC SYSTEM IS FULLY DUCTED.
D) VERTICAL OPENINGS - 2 HOUR RATING WITH 1-1/2 HOUR OPENING PROTECTION INCLUDING: STAIR SHAFTS, ELEVATOR SHAFTS, MECHANICAL/SERVICE SHAFTS, EXPANSION AND SEISMIC JOINTS.

FIRE SPRINKLER STATUS:
BUILDING 700: FULLY SPRINKLERED BUILDING

NUMBER OF STORIES:
BUILDING 700: 5 STORIES ABOVE GRADE (EXISTING)

APPROXIMATE AREA OF WORK: (SINGLE STORY ADDITION)
BUILDING 700: 990 GROSS SQ. FT. ADDITION + 468 GROSS SQ. FT. RENOVATION

PROJECT DESCRIPTION

THE INTENT OF THIS PROJECT IS TO DESIGN AND PROVIDE DESIGN SUPPORT FOR INTERIOR RENOVATION & ADDITION TO BLDG 700 IN SUPPORT OF NEW MRI EQUIPMENT. THE ADDITION IS NOT TO EXCEED 900 GSF, AND THE RENOVATION WILL BE APPROXIMATELY 420 GSF.

DESIGN & SPECIFICATION REQUIREMENTS

- MASTER CONSTRUCTION SPECIFICATIONS, PG-18-1
- VA SEISMIC DESIGN REQUIREMENTS, H-18-8
- ASME BOILER AND PRESSURE VESSEL CODE
- ASME CODE FOR PRESSURE PIPING
- ARCHITECTURAL BARRIERS ACT ACCESSIBILITY STANDARDS (ABAAS) INCLUDING VA SUPPLEMENT, BARRIER FREE DESIGN GUIDE (PG-18-130)
- BUILDING CODE REQUIREMENTS FOR REINFORCED CONCRETE, AMERICAN CONCRETE INSTITUTE AND COMMENTARY - ACI 318
- MANUAL OF STEEL CONSTRUCTION, LOAD AND RESISTANCE FACTOR DESIGN SPECIFICATIONS FOR STRUCTURAL STEEL BUILDINGS, AMERICAN INSTITUTE OF STEEL CONSTRUCTION (AISC)
- VENTILATION FOR ACCEPTABLE INDOOR AIR QUALITY - ASHRAE STANDARD 62.1- 2004
- SAFETY STANDARD FOR REFRIGERATION SYSTEMS - ASHRAE STANDARD 15 - 2007

GENERAL NOTES

- EXISTING CONDITIONS ARE SHOWN FOR REFERENCE ONLY. THE CONTRACTOR SHALL FIELD VERIFY ALL EXISTING CONDITIONS AND BE RESPONSIBLE FOR THE ACCURACY OF SUCH CONDITIONS PRIOR TO STARTING THE WORK.
- WRITTEN DIMENSIONS TAKE PRECEDENCE. DO NOT SCALE THE DRAWINGS. IF UNABLE TO LOCATE DIMENSIONS FOR ANY ITEM OF WORK, CONSULT THE COR PRIOR TO PROCEEDING WITH THE WORK.
- VERIFY ALL DRAWING DIMENSIONS PRIOR TO STARTING THE WORK. NOTIFY THE COR IMMEDIATELY OF ANY DISCREPANCIES OR VARIATIONS. DO NOT PROCEED WITH THE AFFECTED OR RELATED WORK UNTIL THE DISCREPANCIES OR VARIATIONS ARE RESOLVED BY THE COR.
- ALL DIMENSIONS NOTED "VERIFY" AND "VF" ARE TO BE CHECKED BY THE CONTRACTOR PRIOR TO STARTING THE WORK. NOTIFY THE COR IMMEDIATELY OF ANY DISCREPANCIES OR VARIATIONS.
- THE NOTATION "TYP" CONVEYS THE MEANING THAT ALL ASSOCIATED CRITERIA FOR LIKE OR SIMILAR ITEMS BE CONSISTENT WHEREVER SUCH NOTE OCCURS.
- THE COR SHALL BE NOTIFIED IN WRITING OF ANY EXISTING MATERIALS SUSPECTED OF BEING HAZARDOUS. WORK CONFINED TO THE AFFECTED AREA SHALL BE SUSPENDED UNTIL APPROPRIATE STEPS TO TEST AND ABATE THE MATERIALS, AS REQUIRED.
- THE CONTRACTOR IS RESPONSIBLE FOR PROTECTING EXISTING CONDITIONS TO REMAIN. ANY EXISTING CONDITION THAT IS DAMAGED OR ALTERED DURING CONSTRUCTION SHALL BE RETURNED TO ITS PREVIOUS STATE.
- ANY NEW WORK OR MODIFICATIONS BEYOND THE SCOPE OF THIS PROJECT WILL REQUIRE A SEPARATE PERMIT OR POST APPROVAL DOCUMENT.

RF AND MAGNETIC SHIELDING AT MRI ROOM

THE MRI SITE PREPARATION SHALL INCLUDE THE INSTALLATION OF AN ENGINEERED RF AND MAGNETIC SHIELDING IN COMPLIANCE WITH THE FRINGE FIELD DIAGRAMS (ADI) PROVIDED BY MANUFACTURER "PHILIPS". THIS SYSTEM SHALL INCLUDE AS A MINIMUM:

- RF SHIELD AT WALLS AND CEILING.
- MAGNETIC SHIELDING AT WALLS WERE INDICATED.
- RF SHIELDING AT FLOORS.
- SOUND ATTENUATION AT WALLS AND DOORS.
- RF SHIELDING FOR ALL DUCTS AND VENTS PENETRATIONS.
- SHIELDING PROTECTION AT ALL PIPE AND CONDUITS PENETRATIONS.
- EMI RATED POWER LINES AND ELECTRICAL FILTERS.
- SHIELDS SUPPORT SYSTEMS INDEPENDENT FROM PRIMARY BUILDING.

DRAWING INDEX

GENERAL		MECHANICAL	
GI-000	COVER SHEET, CODES, NOTES, VA GUIDELINES, AND INDEX	M-001	MRI ADDITION NOTES, SYMBOLS AND ABBREVIATIONS
GI-101	CONTRACTOR STAGING LOCATION PLAN AND NOTES	MD-101	MRI ADDITION HVAC ZONING PLAN
G-101	MRI ROOM PREPARATION SHIELDING REQUIREMENTS	M-102	MRI ADDITION HVAC PIPING PLAN
G-102	MRI ROOM PREPARATION SHIELDING DETAILS	M-103	MRI ADDITION HVAC DUCTING PLAN
AG-101	SIGNAGE IDENTIFICATION DETAILS	M-104	MRI ADDITION HVAC ROOF PLAN
AG-102	SIGNAGE LOCATION FLOOR PLAN	M-301	MRI ADDITION SECTIONS
CIVIL		M-500	PHILIPS INGENIA 1.5T HP STANDARD REFERENCE DRAWINGS
C001	GENERAL NOTES	M-501	DETAILS
C101	EXISTING CONDITIONS PLAN	M-502	DETAILS
CD101	DEMOLITION PLAN	M-601	MRI ADDITION EQUIPMENT SCHEDULES
CP101	PROPOSED LAYOUT PLAN	M-602	MRI ADDITION AIR FLOW DIAGRAM AND HHW P&ID
CP102	GRADING PLAN	PIPING	
CU101	UTILITY PLAN	P-001	MRI ADDITION NOTES, ABBREVIATIONS AND SYMBOLS
CP501	EROSION CONTROL PLAN	PD-101	MRI ADDITION PLUMBING PLAN - DEMOLITION
CP502	DETAILS	P-101	MRI ADDITION SANITARY SEWER PIPING PLAN
STRUCTURAL		P-102	MRI ADDITION DOMESTIC WATER PIPING PLAN
S000	GENERAL INFORMATION	P-103	MRI ADDITION PROCESS PIPING PLAN
S001	MATERIAL SPECIFICATIONS	P-104	MRI ADDITION ROOF PIPING PLAN
SB101	FOUNDATION PLAN	P-501	PIPING DETAILS
SF101	ROOF FRAMING PLAN	P-601	MRI ADDITION EQUIPMENT SCHEDULES
S501	TYPICAL CONCRETE SECTIONS AND DETAILS	P-602	MRI ADDITION DOMESTIC WATER WASTE /VENT AND STORM DRAIN RISER DIAGRAMS
S502	FOUNDATION SECTION AND DETAILS	ELECTRICAL	
S503	ROOF FRAMING SECTION AND DETAILS	E-001	MRI ADDITION NOTES, SYMBOLS AND ABBREVIATIONS
S504	FRAME ELEVATION SECTION AND DETAILS	ED-101	MRI ADDITION LIGHTING PLAN - DEMOLITION
ARCHITECTURAL		E-100	MRI ADDITION EQUIPMENT LOCATION PLAN
GI-001	ABBREVIATIONS, MATERIALS AND SYMBOLS	E-101	MRI ADDITION POWER PLAN
GI-002	SITE PLAN	E-102	MRI ADDITION LIGHTING PLAN
AD100	DEMO PLAN - LEVEL 1	E-103	MRI ADDITION ROOF POWER PLAN
AD201	EXTERIOR DEMOLITION ELEVATIONS	E-401	ELECTRICAL OVERALL SITE PLAN
A-101	FLOOR PLAN - LEVEL 1	E-402	ELECTRICAL ELECTRICAL ROOMS
A-102	ROOF PLAN	E-500	PHILIPS INGENIA 1.5T HP STANDARD REFERENCE DRAWINGS
A-121	FIRST FLOOR REFLECTED CEILING PLAN	E-601	NORMAL/EMERGENCY POWER PARTIAL ONE LINE DIAGRAM
A-200	DEMO & NEW CONSTRUCTION	E-701	ELECTRICAL SCHEDULES
A-201	OVERALL BLDG EXTERIOR ELEVATIONS	I.T. & COMMUNICATIONS	
A-301	BUILDING SECTION WEST / EAST	T-0001	DRAWING INDEX, LEGEND, GENERAL NOTES & ABBREVIATIONS.
A-302	BUILDING SECTION NORTH / SOUTH	T-1000	TELECOM OVERALL SITE PLAN
A-310	WALL SECTIONS	T-1001	WORK AREA OUTLET PLAN - MRI ADDITION DETAILS
A-411A	INTERIOR ELEVATIONS	T-6001	DETAILS
A-411B	INTERIOR ELEVATIONS	FIRE ALARM	
A-510	TYPICAL CASEWORK DETAILS	FA-100	GENERAL NOTES, SYMBOLS, ABBREV. AND OPERATION MATRIX
A-520	EXTERIOR WALL DETAILS	FA-101	FIRE ALARM PLAN
A-540	TPO ROOF SYSTEM DETAIL	FIRE SPRINKLER	
A-550	PARTITION TYPES AND DETAILS	FS-100	GENERAL NOTES
A-551	TYPICAL INTERIOR PARTITION FRAMING DETAILS	FS-101	REFLECTED CEILING PLAN
A-552	PARTITION / STRUCTURE INTERFACE DETAILS	FS-102	PIPING PLAN
A-561	DOOR TYPES / DOOR DETAILS	FS-103	SECTION EAST/WEST
A-570	TYPICAL SUSPENDED CEILING DETAILS	FS-104	CALC REFERENCE
A-571	MISCELLANEOUS CEILING DETAILS		
A-611	FIRST FLOOR FINISH PLAN		
LANDSCAPING			
L-1.0	PLANTING PLAN, LEGEND AND DETAILS		
L-2.0	IRRIGATION PLAN		
L-2.1	IRRIGATION LEGEND, NOTES AND DETAILS		
L-2.2	IRRIGATION DETAILS.		

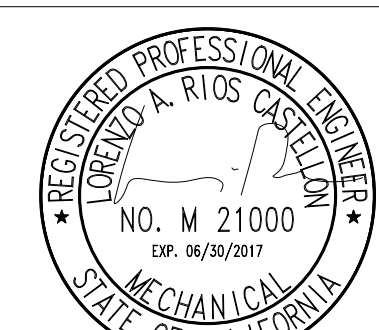
FINAL BID DOCUMENTS

Revisions:	Date
FINAL BID DOCUMENTS (14-236)	9/25/15
100% CONSTRUCTION DOCUMENTS (14-230)	7/30/15
50% CONSTRUCTION DOCUMENTS (14-220)	7/2/15
100% DESIGN DEVELOPMENT (14-216)	5/29/15
50% DESIGN DEVELOPMENT (14-199)	4/10/15
ISSUE FOR 100% S.D. REVIEW (14-181)	2/20/15
ISSUE FOR 50% S.D. REVIEW (14-126)	12/9/14

CONSULTANTS:
RATCLIFF
5856 Doyle Street
Emeryville CA 94608
Tel 510 899 6400
www.ratcliffarch.com

Bkf
ENGINEERS / SURVEYORS / PLANNERS
980 9th Street, Suite 1770
Sacramento, CA 95814
Ph: (916) 556-5800 F: (916) 556-5899

BCA
BIGLOS CARDOSA
ASSOCIATES INC
1000 California Street, Suite 1000
San Francisco, CA 94108
Tel: (415) 774-1000
Fax: (415) 774-1001
www.bcaassociates.com



ARCHITECT/ENGINEERS:
ADVANCE DESIGN CONSULTANTS, INC.
998 PARK AVENUE SAN JOSE CALIFORNIA 95126
P: (408) 287-1881 F: (408) 294-3186 www.adcengineers.com

ATTENTION:

ONLY WET SIGNED DOCUMENTS CONSTITUTE ADVANCE DESIGN CONSULTANTS, INC. PROFESSIONAL WORK AND BECAUSE OTHER REPRODUCIBLE DOCUMENTS MAY BE ILLEGALLY ALTERED WITHOUT THE CONSENT OF ADVANCE DESIGN CONSULTANTS, INC., THE WET SIGNED DOCUMENTS MUST BE USED FOR THE ORIGINAL AND CORRECT INFORMATION. IF THERE ARE ANY DIFFERENCES BETWEEN THE WET SIGNED DOCUMENTS AND ANY OTHER DOCUMENTS, THE WET SIGNED DOCUMENTS SHALL GOVERN.
ADVANCE DESIGN CONSULTANTS, INC. IS NOT RESPONSIBLE FOR ANY MODIFICATIONS MADE TO OUR DOCUMENTS BY ANYONE OTHER THAN AUTHORIZED REPRESENTATIVES OF ADVANCE DESIGN CONSULTANTS, INC.
PO# 14-308-41

Drawing Title
COVER SHEET, CODES, NOTES, VA GUIDELINES, AND INDEX

Approved Project Director
VAPAHCs PLANNING AND ENGINEERING

Project Title
MRI PROPOSED EXPANSION

Location
10535 HOSPITAL WAY MATHER CA

Date
8/17/15

Checked
D. OLSEN

Drawn
D. OLSEN

Project Number
612A4-14-014

Building Number
700

Drawing Number
GI-000

Dwg
of

Office of
Construction
and Facilities
Management



three inches = one foot
one and one half inches = one foot
one inch = one foot
three quarters inch = one foot
one half inch = one foot
three eighths inch = one foot
one quarter inch = one foot
one eighth inch = one foot

LIST OF NATIONAL STANDARD CODES USED:

2013 NATIONAL FIRE PROTECTION ASSOCIATION (NFPA)
2013 NFPA 70 NATIONAL ELECTRIC CODE
2013 NFPA 70E STANDARD FOR ELECTRICAL SAFETY IN THE WORK PLACE
2013 NFPA 72 NATIONAL FIRE ALARM AND SIGNALING CODE

ABBREVIATIONS:

ABBREV.	DESCRIPTION
120V	120VAC POWER
AFF	ABOVE FINISHED FLOOR
C.COM	COMMON
(E)	EXISTING
EOL	END OF LINE
(N)	NEW
N/A	NO APPLICABLE
NAC	NOTIFICATION APPLIANCE CIRCUIT
SLC	SIGNALING LINE CIRCUIT
TYP	TYPICAL
O.S.&Y	OUTSIDE SCREW & YOKE
UON	UNLESS OTHERWISE NOTED
Z	ZONE

SYMBOLS

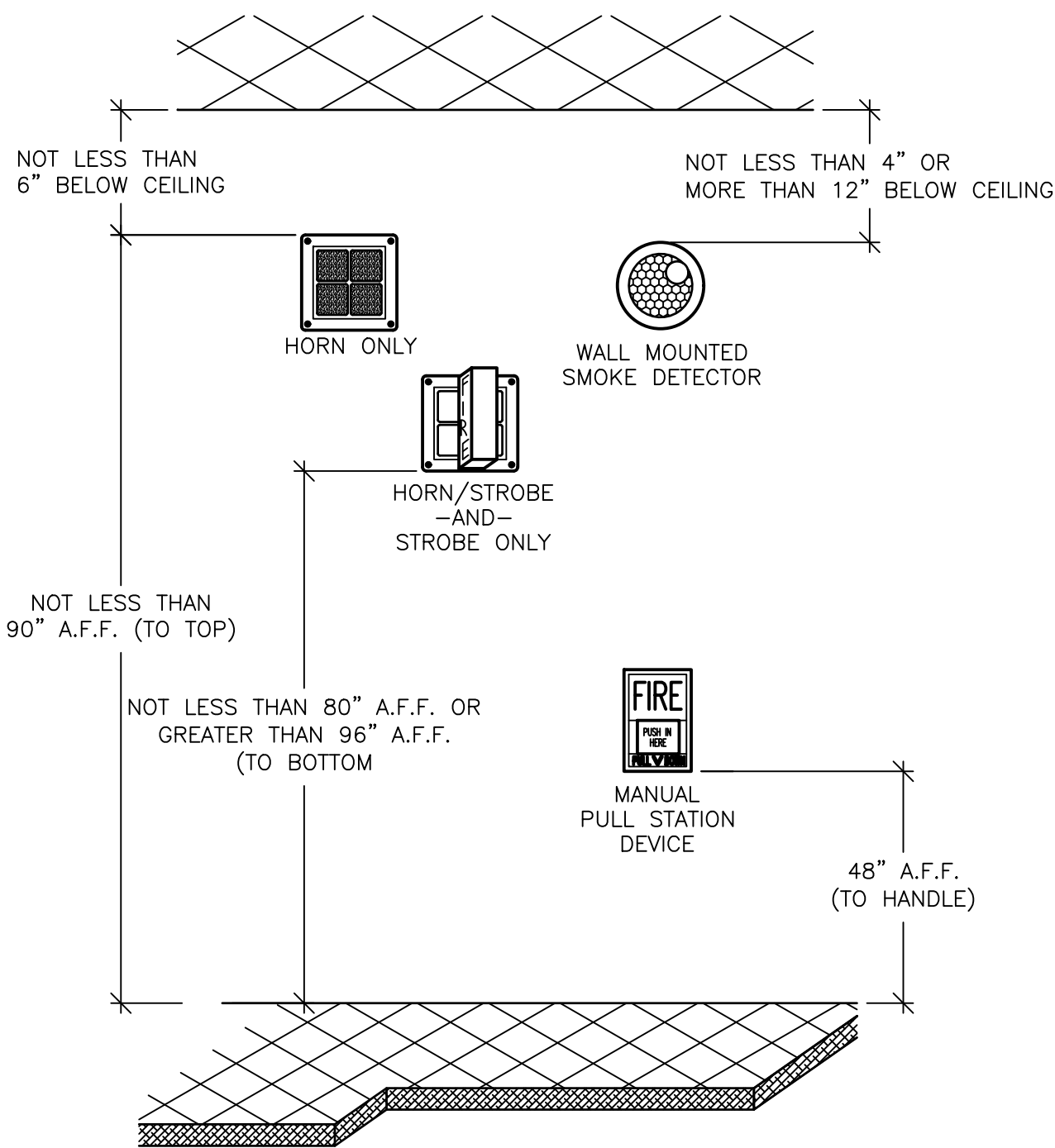
	FIRE ALARM CONTROL PANEL
	REMOTE POWER SUPPLY
	MANUAL PULL STATION
	ADDRESABLE SMOKE DETECTOR
	HEAT DETECTOR
	HORN/STROBE CEILING MOUNTED COMBINATION
	HORN/STROBE WALL MOUNTED COMBINATION
	FIRE ALARM TERMINAL CABINET
	ADDRESSABLE DUCT SMOKE DETECTOR
	ADDRESSABLE MONITOR MODULE
	ADDRESSABLE CONTROL MODULE
	ADDRESSABLE RELAY MODULE
	FLOW SWITCH
	WATER PRESSURE WATER FLOW SWITCH
	VALVE SUPERVISORY SWITCH (TAMPER SWITCH)
	WATER FLOW SWITCH
	SUPERVISORY TAMPER SWITCH
	BELL
	EOL

FIRE ALARM OPERATION MATRIX

	ACTIVATE ALARM AT FACU	ACTIVATE ALARM AT REMOTE ANNUNCIATOR	ACTIVATE TROUBLE SIGNAL AT FACU	ACTIVATE TROUBLE AT REMOTE ANNUNCIATOR	ACTIVATE SUPERVISORY SIGNAL AT FACU	ACTIVATE SUPERVISORY SIGNAL AT ANNUNCIATOR	SEND ALARM OFF-SITE VIA COMMUNICATOR	SEND TROUBLE SIGNAL OFF-SITE VIA COMMUNICATOR	SEND SUPERVISORY SIGNAL OFF-SITE VIA COMMUNICATOR	SEND RESTORE SIGNAL OFF-SITE VIA COMMUNICATOR	ACTIVATE AUDIBLE/VISIBLE SIGNALS	ACTIVATE WATERFLOW BELL	SHUT DOWN HVAC PANEL	ACTIVATE BATTERY BACK-UP	DEACTIVATE AUDIBLE SIGNALS	DEACTIVATE VISIBLE SIGNALS	RESET ALL TRIPPED MODULES	SYSTEM NORMAL
MANUAL PULL STATION	X	X										X						
SMOKE DETECTORS	X	X									X		X					
HEAT DETECTORS																		
FIRE SPRINKLER WATERFLOW SWITCH	X	X					X				X	X						
FIRE SPRINKLER SUPERVISORY SWITCH					X	X		X										
WIRING CONDITIONS																		
SIGNALING LINE CIRCUIT (SLC)																		
WIRE-TO-WIRE SHORT			X	X				X										
SINGLE OPEN			X	X				X										
SINGLE GROUND			X	X				X										
INITIATING DEVICE CIRCUIT (IDC)																		
WIRE-TO-WIRE SHORT	X	X					X				X							
SINGLE OPEN			X	X				X										
SINGLE GROUND			X	X				X										
NOTIFICATION APPLIANCE CIRCUIT (IDC)																		
WIRE-TO-WIRE SHORT			X	X				X										
SINGLE OPEN			X	X				X										
SINGLE GROUND			X	X				X										
LOSS OF 120VAC POWER			X	X											X			
SIGNAL SILENCE									X						X			
RESET FACU								X							X	X	X	X

NOTE:

SYMBOLS AND ABBREVIATIONS LISTED ARE FOR GENERAL USE. DISREGARD THOSE WHICH ARE NOT USED ON THE DRAWINGS.



NOTE: ALL DEVICES MAY NOT BE USED ON THIS PROJECT

1 TYP. ELEVATIONS FOR FIRE ALARM DEVICES DETAIL
SCALE: N.T.S.

GENERAL NOTES:

- ENTIRE INSTALLATION SHALL CONFORM TO APPLICABLE NATIONAL CODES INCLUDING NFPA, NEC, AND VA FACILITY QUALITY SERVICE MANUAL PER OFFICE OF CONSTRUCTION AND FACILITY MANAGEMENT.
- ALL THE DEVICES, WIRING AND INSTALLATION PRACTICE SHALL COMPLY WITH FIRE DETECTION AND ALARM SPECIFICATIONS SECTION 28.3100
- EXISTING AND NEW FIRE ALARM AND DETECTION SYSTEM SHALL BE COMMISSIONED TO ENSURE THAT SYSTEM IS IN FULL COMPLIANCE AFTER PROJECT COMPLETION.

RISER DIAGARAM NOTES:

- THIS RISER DIAGRAM INDICATES THE GENERAL ARRANGEMENT OF THE FIRE ALARM SYSTEM COMPONENTS THAT ARE PROVIDED UNDER THIS CONTRACT. SEE FLOOR PLAN FA-1.0 FOR LOCATION OF DEVICES. REMOTE POWER SUPPLY CIRCUIT LOADING SHALL BE DETERMINED BY CONTRACTOR. CONTRACTOR TO PRODUCE SHOP DRAWINGS DEPICTING WIRING OF ALL DEVICES INCLUDING RISER DIAGRAM, STAND BY BATTERY AND VOLTAGE DROP.
- NOTE THAT CONDUCTOR TYPES, QUANTITIES AND SIZES ARE NOT SHOWN. CONNECT FIRE ALARM SYSTEM DEVICES WITH TYPES, QUANTITIES AND SIZES OF CONDUCTORS AS DIRECTED BY THE SYSTEM SUPPLIER. VERIFY WIRING REQUIREMENTS WITH SYSTEM SUPPLIER PRIOR TO BID.
- INSTALL ALL SYSTEM CONDUCTORS IN CONDUIT SIZED FOR CONDUCTORS OF THE TYPE, QUANTITY AND SIZES AS DIRECTED BY THE SYSTEM SUPPLIER.
- PROVIDE FIRE ALARM SYSTEM PER SPECIFICATION SECTION 28-31-00 COMPLETE WITH JUNCTION BOXES, COVER PLATES, CONDUITS, SUPPORTS, END-OF-LINE DEVICES, POWER SUPPLIES, AUXILIARY RELAYS, CONDUCTORS, TESTING, ETC., ALL AS REQUIRED FOR A COMPLETE OPERATIONAL SYSTEM.
- FIRE ALARM TERMINAL CABINET (FATC #1) IS TO BE INTERCONNECTED USING NFPA STYLE 7 WIRING.
- FIRE ALARM TERMINAL CABINET (FATC) TO BE INTERCONNECTED WITH (E) FACU USING NFPA STYLE 7 WIRING.
- ALL DEVICES SHALL BE FULLY ADDRESSABLE AND COMPATIBLE WITH EXISTING FIRE ALARM PANEL SECUTRON MODEL 2920.

GENERAL NOTES:

- THIS DRAWING INDICATED THE TYPES AND LOCATIONS OF FIRE ALARM DEVICES. FOR INTER CONNECTIONS AND ACCESSORIES REQUIRED UNDER THIS CONTRACT,SEE DRAWING (FA-0.0).
- THE EXISTING ADDRESSABLE FIRE ALARM SYSTEM PROVIDED FOR THE BUILDING SHALL BE USED FOR MONITORING AND CONTROLLING SYSTEM COMPONENTS ON THIS FLOOR. THE EXISTING FIRE ALARM SYSTEM IS SECUTRON MODEL 2920.

FINAL BID DOCUMENTS

FINAL BID DOCUMENTS (14-236)	9/25/15
100% CONSTRUCTION DOCUMENTS (14-230)	7/30/15
50% CONSTRUCTION DOCUMENTS (14-220)	7/2/15
100% DESIGN DEVELOPMENT (14-216)	5/29/15
50% DESIGN DEVELOPMENT (14-199)	4/10/15
ISSUE FOR 100% S.D. REVIEW (14-181)	2/20/15
ISSUE FOR 50% S.D. REVIEW (14-126)	12/9/14
Revisions:	Date

CONSULTANTS:

STAMP:



ARCHITECT/ENGINEERS:



998 PARK AVENUE SAN JOSE CALIFORNIA 95126
P: (408) 287-1881 F: (408) 294-3186 www.adcengineers.com

ATTENTION:

ONLY WET SIGNED DOCUMENTS CONSTITUTE ADVANCE DESIGN CONSULTANTS, INC. PROFESSIONAL WORK AND BECAUSE OTHER REPRODUCIBLE DOCUMENTS MAY BE EASILY ALTERED WITHOUT THE CONSENT OF ADVANCE DESIGN CONSULTANTS, INC., THE WET SIGNED DOCUMENTS MUST BE REFERRED TO FOR THE ORIGINAL AND CORRECT INFORMATION. IF THERE ARE ANY DIFFERENCES BETWEEN THE WET SIGNED DOCUMENTS AND ANY OTHER DOCUMENTS, THE WET SIGNED DOCUMENTS SHALL GOVERN.

ADVANCE DESIGN CONSULTANTS, INC. IS NOT RESPONSIBLE FOR ANY MODIFICATIONS MADE TO OUR DOCUMENTS BY ANYONE OTHER THAN AUTHORIZED REPRESENTATIVES OF ADVANCE DESIGN CONSULTANTS, INC.

PO# 14-308-41

Drawing Title
FIRE ALARM
GENERAL NOTES, SYMBOLS, ABBREV.
AND OPERATION MATRIX.

Approved Project Director
VAPAHCS PLANNING AND ENGINEERING

Project Title
MRI PROPOSED
EXPANSION

Location
10535 HOSPITAL WAY MATHER CA

Date
8/17/15

Checked
P. LOPEZ

Drawn
M. OJELLAR

Project Number
612A4-14-014

Building Number
700

Drawing Number
FA-100

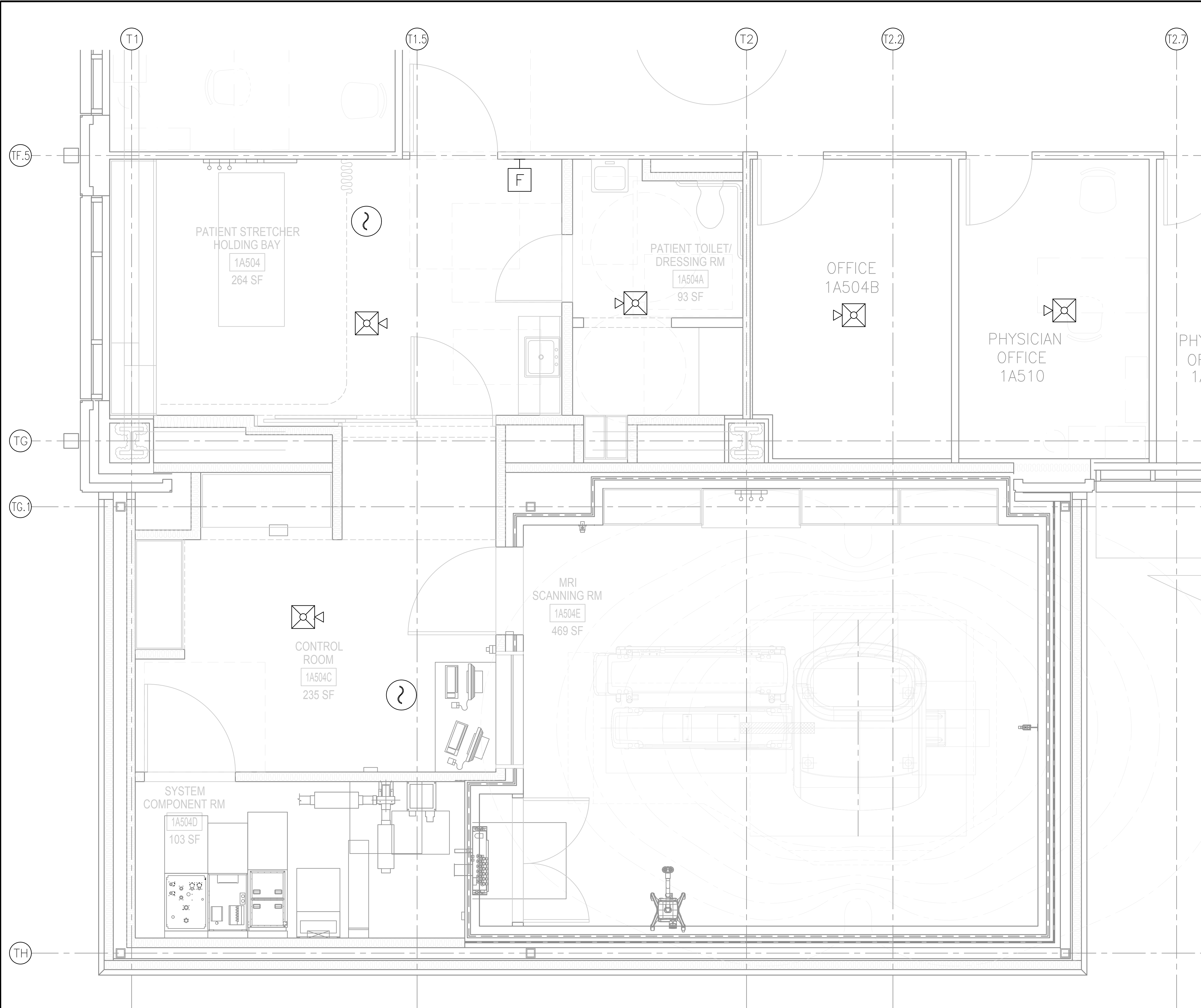
Dwg. of

Office of
Construction
and Facilities
Management



1
2
3
4
5
6
7
8
9
A
B
C
D
E
F

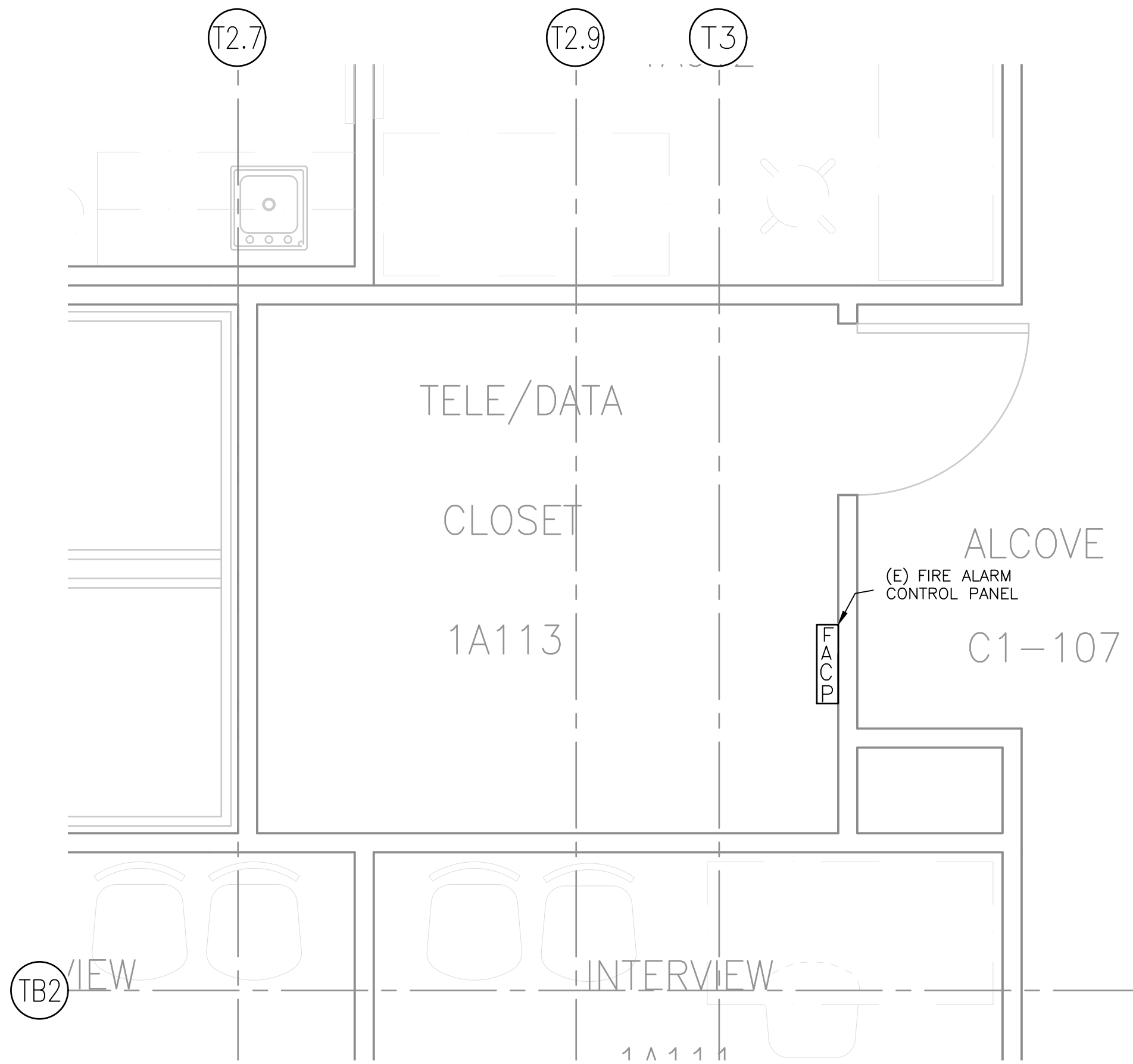
three eighths inch = one foot
one eighth inch = one foot
one quarter inch = one foot
one half inch = one foot
three quarters inch = one foot
one inch = one foot
one and one half inches = one foot
two inches = one foot
three inches = one foot
four inches = one foot
five inches = one foot
six inches = one foot
seven inches = one foot
eight inches = one foot
nine inches = one foot
ten inches = one foot
eleven inches = one foot
twelve inches = one foot
thirteen inches = one foot
fourteen inches = one foot
fifteen inches = one foot
sixteen inches = one foot
seventeen inches = one foot
eighteen inches = one foot
nineteen inches = one foot
twenty inches = one foot
twenty one inches = one foot
twenty two inches = one foot
twenty three inches = one foot
twenty four inches = one foot
twenty five inches = one foot
twenty six inches = one foot
twenty seven inches = one foot
twenty eight inches = one foot
twenty nine inches = one foot
thirty inches = one foot
thirty one inches = one foot
thirty two inches = one foot
thirty three inches = one foot
thirty four inches = one foot
thirty five inches = one foot
thirty six inches = one foot
thirty seven inches = one foot
thirty eight inches = one foot
thirty nine inches = one foot
forty inches = one foot
forty one inches = one foot
forty two inches = one foot
forty three inches = one foot
forty four inches = one foot
forty five inches = one foot
forty six inches = one foot
forty seven inches = one foot
forty eight inches = one foot
forty nine inches = one foot
fifty inches = one foot
fifty one inches = one foot
fifty two inches = one foot
fifty three inches = one foot
fifty four inches = one foot
fifty five inches = one foot
fifty six inches = one foot
fifty seven inches = one foot
fifty eight inches = one foot
fifty nine inches = one foot
sixty inches = one foot
sixty one inches = one foot
sixty two inches = one foot
sixty three inches = one foot
sixty four inches = one foot
sixty five inches = one foot
sixty six inches = one foot
sixty seven inches = one foot
sixty eight inches = one foot
sixty nine inches = one foot
seventy inches = one foot
seventy one inches = one foot
seventy two inches = one foot
seventy three inches = one foot
seventy four inches = one foot
seventy five inches = one foot
seventy six inches = one foot
seventy seven inches = one foot
seventy eight inches = one foot
seventy nine inches = one foot
eighty inches = one foot
eighty one inches = one foot
eighty two inches = one foot
eighty three inches = one foot
eighty four inches = one foot
eighty five inches = one foot
eighty six inches = one foot
eighty seven inches = one foot
eighty eight inches = one foot
eighty nine inches = one foot
ninety inches = one foot
ninety one inches = one foot
ninety two inches = one foot
ninety three inches = one foot
ninety four inches = one foot
ninety five inches = one foot
ninety six inches = one foot
ninety seven inches = one foot
ninety eight inches = one foot
ninety nine inches = one foot
one hundred inches = one foot



MRI ADDITION FIRE ALARM PLAN
SCALE: 1/2" = 1'-0"

GENERAL NOTES

- 1 FIRE ALARM DEVICES SHOULD BE CONNECTED TO EXISTING FACP LOCATED AT TELEPHONE / DATA ROOM 1A113



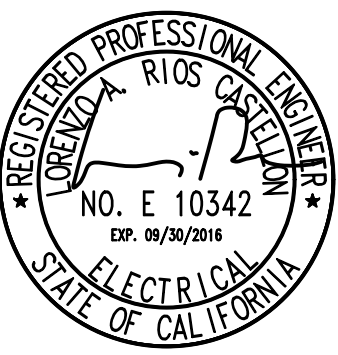
1 (E) LOCATION TELE/DATA ROOM "1A113"
SCALE: 1/2" = 1'-0"

FINAL BID DOCUMENTS

FINAL BID DOCUMENTS (14-236)	9/25/15
100% CONSTRUCTION DOCUMENTS (14-230)	7/30/15
50% CONSTRUCTION DOCUMENTS (14-220)	7/2/15
100% DESIGN DEVELOPMENT (14-216)	5/29/15
50% DESIGN DEVELOPMENT (14-199)	4/10/15
ISSUE FOR 100% S.D. REVIEW (14-181)	2/20/15
ISSUE FOR 50% S.D. REVIEW (14-126)	12/9/14
Revisions:	Date

CONSULTANTS:

STAMP:



ARCHITECT/ENGINEERS:

ADVANCE DESIGN CONSULTANTS, INC.
998 PARK AVENUE SAN JOSE CALIFORNIA 95126
P: (408) 287-1881 F: (408) 294-3186 www.adcengineers.com

ATTENTION:

ONLY WET SIGNED DOCUMENTS CONSTITUTE ADVANCE DESIGN CONSULTANTS, INC. PROFESSIONAL WORK AND BECAUSE OTHER REPRODUCIBLE DOCUMENTS MAY BE EASILY ALTERED WITHOUT THE CONSENT OF ADVANCE DESIGN CONSULTANTS, INC., THE WET SIGNED DOCUMENTS MUST BE KEPT FOR THE ORIGINAL AND CORRECT INFORMATION. IF THERE ARE ANY DIFFERENCES BETWEEN THE WET SIGNED DOCUMENTS AND ANY OTHER DOCUMENTS, THE WET SIGNED DOCUMENTS SHALL GOVERN.

PO# 14-308-41

Drawing Title
FIRE ALARM
MRI ADDITION FIRE ALARM PLAN

Approved Project Director
VAPAHCs PLANNING AND ENGINEERING

Project Title
MRI PROPOSED EXPANSION

Location
10535 HOSPITAL WAY MATHER CA

Date
8/17/15

Checked
P. LOPEZ

Drawn
C. MAYBURY

Project Number
612A4-14-014

Building Number
700

Drawing Number
FA-101

Dwg. of

Office of Construction and Facilities Management

Department of Veterans Affairs