

A  
—  
B  
—  
C  
—  
D  
—  
E  
—  
F

one eighth inch = one foot  
0 4 8 16  
one quarter inch = one foot  
0 4 8  
three eighths inch = one foot  
0 4 8 16  
one half inch = one foot  
0 4 8  
three quarters inch = one foot  
0 2 4  
one inch = one foot  
0 6  
one and one half inches = one foot  
0 6 12  
three inches = one foot  
0 6 12 18  
6"

**GENERAL NOTES:**

A. CODE COMPLIANCE:

THE COMPLETE PLUMBING AND MECHANICAL INSTALLATION SHALL BE IN ACCORDANCE WITH THE LATEST EDITION OF NATIONAL PLUMBING CODE, INTERNATIONAL PLUMBING CODE, NFPA, AND WITH ALL VA INSTALLATION GUIDELINES.

B. "AS-BUILT" DRAWINGS:

THE CONTRACTOR SHALL MAINTAIN AT THE JOB AN UP-TO-DATE "AS-BUILT" DRAWING SET. THE "AS-BUILT" DRAWING SET SHALL REFLECT ALL APPROVED CHANGES TO THE DESIGN DRAWINGS. THE "AS-BUILT" DRAWINGS SET SHALL BE KEPT CLEAN AND IN GOOD CONDITION AND SHALL BE TURNED OVER TO THE VA CONTRACTING OFFICER REPRESENTATIVE (COR) TWO (2) WEEKS AFTER COMPLETION OF THE PROJECT.

C. FUNCTIONAL TEST AND ACCEPTANCE:

UPON COMPLETION OF THE PROJECT, THE CONTRACTOR SHALL SCHEDULE AND PERFORM A COMPLETE FUNCTIONAL TEST TO DEMONSTRATE TO VA CONTRACTING OFFICER REPRESENTATIVE (COR) THAT THE SYSTEMS ARE OPERATING AS INTENDED. ANY DEFECTS OR DISCREPANCIES IN THE MATERIAL OR WORK SHALL BE CORRECTED IMMEDIATELY TO THE SATISFACTION OF THE CONTRACTING OFFICER REPRESENTATIVE (COR) AT NO ADDITIONAL COST, NOISY OPERATION AND/OR VIBRATION TRANSMISSION TO THE BLDG. STRUCTURE WILL NOT BE ACCEPTED.

D. GENERAL REQUIREMENTS:

- DRAWINGS ARE DIAGRAMMATIC, AND INDICATE GENERAL ARRANGEMENT OF THE PIPING/PLUMBING SYSTEMS ONLY. THE CONTRACTOR SHALL FIELD COORDINATE ALL PIPING INSTALLATION WITH ALL TRADES.
- BRACE AND SUPPORT ALL PIPING AND MECHANICAL EQUIPMENT IN ACCORDANCE WITH THE MANUFACTURER'S GUIDELINES, VA STANDARDS AND THE LATEST SMACNA GUIDELINES.
- PROVIDE ALL VALVES AND OTHER PIPING SPECIALTIES AS FULL-LINE SIZE, UNLESS OTHERWISE SHOWN.
- SHUT-OFF VALVES SHOWN ARE ONLY SYMBOLS AND DO NOT REFLECT THE VALVE TYPE OR MATERIALS. CONTRACTOR SHALL PROVIDE AND INSTALL VALVES WITH CONSTRUCTION AND MATERIAL COMPLYING WITH SPECIFICATIONS.
- SEAL AROUND ALL PIPES PENETRATING FIRE RATED WALLS AND CONCRETE FLOOR WITH UL LISTED MATERIAL. SEAL SMOKE TIGHT ALL PIPE PENETRATIONS.
- ALL PIPING/PLUMBING SHALL BE PROVIDED WITH LABEL. LABEL SHALL INDICATE THE NAME OF SERVICED LIQUID OR GAS. IT SHALL ALSO INDICATE THE DIRECTION OF FLOW. LABEL'S COLOR SIZE AND SPACING SHALL BE PER SPECIFICATIONS.
- COORDINATE ALL PIPING AND VALVE INSTALLATIONS WITH ALL OTHER TRADES.
- PROTECT THE PUBLIC FROM INJURY DURING THE ENTIRE PROGRESS OF WORK BY POSTING SIGNS, GUARD LIGHTS AND BARRICADES.
- DEBRIS SHALL BE REMOVED FROM THE PREMISES ON A DAILY BASIS. DO NOT ALLOW DEBRIS TO ACCUMULATE. PROTECT ADJACENT AREAS FROM DUST AND DEBRIS.
- CONTRACTOR SHALL FAMILIARIZE THEMSELVES WITH SPECIFICATIONS. PROVIDE ALL MATERIALS, CONSTRUCTION, INSTALLATION AND SUPPORTS TO CONSTITUTE OPERABLE. DOMESTIC WATER, STORM DRAIN, WASTE AND VENT AND FIRE PROTECTION SYSTEM.
- CONTRACTOR SHALL SCAN CONCRETE FLOOR OR WALL BEFORE CORE DRILLING TO AVOID CUTTING THE EXISTING STEEL REINFORCED BAR.
- NOTIFY CONTRACTING OFFICER REPRESENTATIVE (COR) 3 WEEKS IN ADVANCE PRIOR TO DRAINAGE AND WATER SHUT DOWN TO PERFORM TIE IN FOR NEW SERVICE.

ABBREVIATIONS:			
ABBR.	DESCRIPTION	ABBR.	DESCRIPTION
AMB	AMBIENT	IE	INVERT ELEVATION
BHP	BRAKE HORSEPOWER	INV	INVERT
CI	CAST IRON	JS	JANITOR SINK
CLG	CEILING	LAV	LAVATORY
COR	CONTRACTING OFFICER REPRESENTATIVE	LB	POUND
CU	COPPER	LOD	LIMIT OF DEMOLITION
CU FT	CUBIC FEET	MAX	MAXIMUM
DCW	DOMESTIC COLD WATER	MA	MEDICAL AIR
DHW	DOMESTIC HOT WATER	MIN	MINIMUM
DFU	DRAINAGE FIXTURE UNITS	MV	MEDICAL VACUUM
(E)	EXISTING	(N)	NEW
ELEC	ELECTRICAL	O2	OXYGEN
EL	ELEVATION	OFD	OVERFLOW DRAIN
F	DEGREE FAHRENHEIT	PD	PRESSURE DROP
FC	FLOOR SINK	PSI	POUNDS PER SQUARE INCH
FCO	FLOOR CLEAN-OUT	RD	ROOF DRAIN
FD	FLOOR DRAIN	SQ.FT.	SQUARE FEET
FLR	FLOOR	SS	SANITARY SEWER
FT	FEET	TEMP	TEMPERATURE
FU	FIXTURE UNITS	TP	TRAP PRIMER
GALV	GALVANIZED	TYP	TYPICAL
GCO	GRADE-CLEAN OUT	V	VENT
GPH	GALLON PER HOUR	VTR	VENT THRU ROOF
GPM	GALLON PER MINUTE	WC	WATER CLOSET
HZ	HERTZ	WCO	WALL CLEAN-OUT
IN	INCHES	WHA	WATER HAMMER ARRESTOR

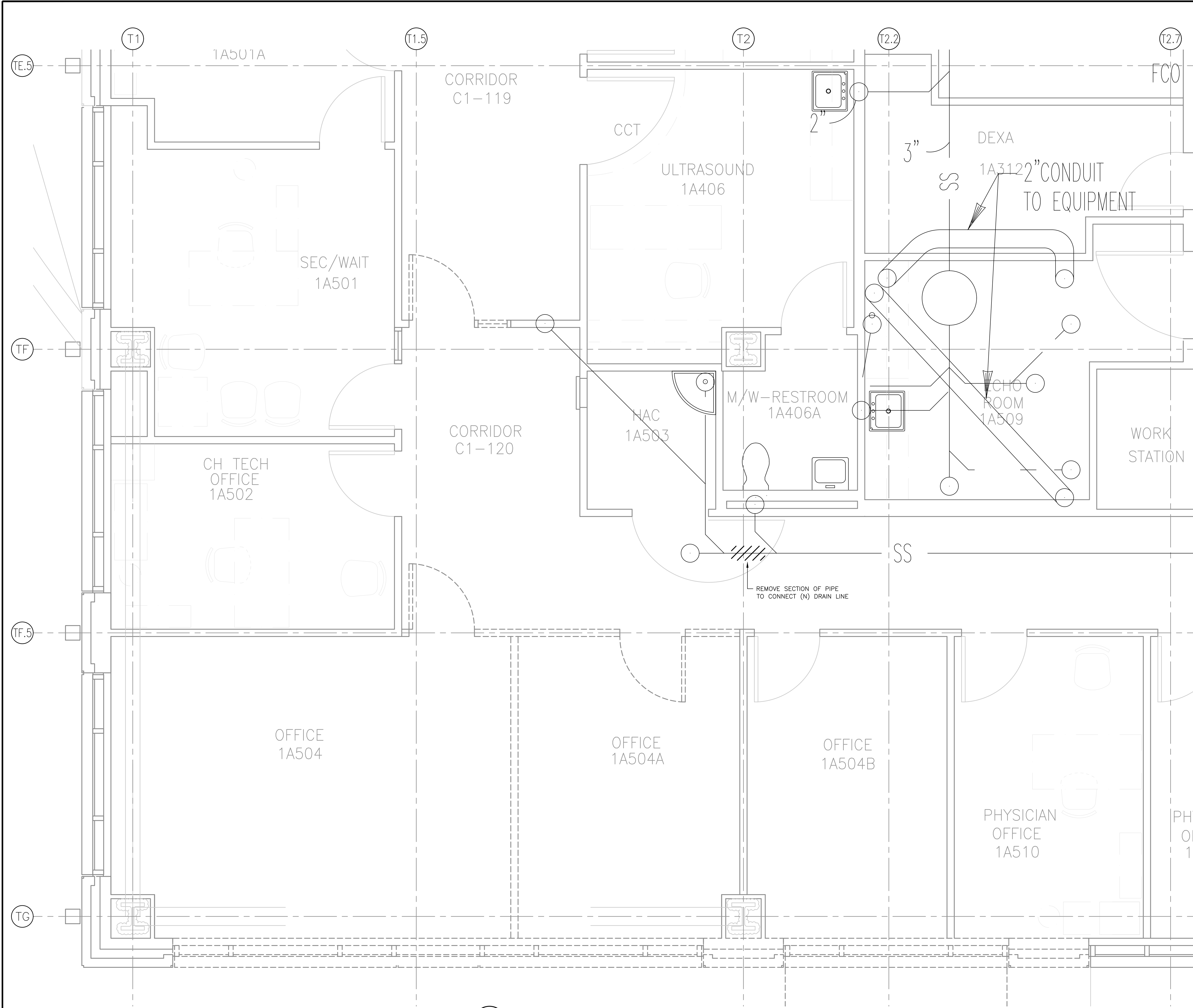
PIPING SYMBOLS:			
GENERAL		PIPING	
SYMB.	DESCRIPTION	SYMB.	DESCRIPTION
			BALL VALVE
	SHEET NOTE		CHECK VALVE
	POINT OF CONNECTION		CONCENTRIC REDUCER
	NEW		FLEXIBLE CONNECTOR
	EXISTING		PRESSURE GAUGE
	EXISTING PIPING OR DEMOLISHED EQUIPMENT TO BE		TEMPERATURE GAUGE
	UNDERGROUND OR BELOW CONCRETE SLAB SANITARY SEWER OR WASTE		UNION
	ABOVE GRADE SANITARY SEWER OR WASTE		BACKFLOW PREVENTER
	CIRCULATING PUMP		SHUT-OFF VALVE
	PRESSURE AND TEMPERATURE RELIEF VALVE		PIPE-UP
			PIPE-DN
			PIPE DROP
			COLD WATER
			HOT WATER
			VENT
			CLEAN OUT
			FLOOR DRAIN
			TRAP PRIMER

FINAL BID DOCUMENTS

<table><tr><td></td><td></td></tr><tr><td>FINAL BID DOCUMENTS (14-236)</td><td>9/25/15</td></tr><tr><td>100% CONSTRUCTION DOCUMENTS (14-230)</td><td>7/30/15</td></tr><tr><td>50% CONSTRUCTION DOCUMENTS (14-220)</td><td>7/2/15</td></tr><tr><td>100% DESIGN DEVELOPMENT (14-216)</td><td>5/29/15</td></tr><tr><td>50% DESIGN DEVELOPMENT (14-199)</td><td>4/10/15</td></tr><tr><td>ISSUE FOR 100% S.D. REVIEW (14-181)</td><td>2/20/15</td></tr><tr><td>ISSUE FOR 50% S.D. REVIEW (14-126)</td><td>12/9/14</td></tr><tr><td>Revisions:</td><td>Date</td></tr></table>			FINAL BID DOCUMENTS (14-236)	9/25/15	100% CONSTRUCTION DOCUMENTS (14-230)	7/30/15	50% CONSTRUCTION DOCUMENTS (14-220)	7/2/15	100% DESIGN DEVELOPMENT (14-216)	5/29/15	50% DESIGN DEVELOPMENT (14-199)	4/10/15	ISSUE FOR 100% S.D. REVIEW (14-181)	2/20/15	ISSUE FOR 50% S.D. REVIEW (14-126)	12/9/14	Revisions:	Date	CONSULTANTS:	STAMP: 	ARCHITECT/ENGINEERS:  998 PARK AVENUE SAN JOSE CALIFORNIA 95126 P: (408) 287-1881 F: (408)294-3186 www.adcengineers.com PO# 14-308-41	<table><tr><td colspan="3">Drawing Title PIPING MRI ADDITION NOTES, ABBREVIATIONS AND SYMBOLS</td></tr><tr><td colspan="3">Approved Project Director VAPAHCS PLANNING AND ENGINEERING</td></tr></table>	Drawing Title PIPING MRI ADDITION NOTES, ABBREVIATIONS AND SYMBOLS			Approved Project Director VAPAHCS PLANNING AND ENGINEERING			<table><tr><td colspan="3">Project Title MRI PROPOSED EXPANSION</td></tr><tr><td colspan="3">Location 10535 HOSPITAL WAY MATHER CA</td></tr><tr><td>Date 8/17/15</td><td>Checked D. HAMMOND</td><td>Drawn J. ROTHMEN</td></tr></table>	Project Title MRI PROPOSED EXPANSION			Location 10535 HOSPITAL WAY MATHER CA			Date 8/17/15	Checked D. HAMMOND	Drawn J. ROTHMEN	<table><tr><td>Project Number 612A4-14-014</td></tr><tr><td>Building Number 700</td></tr><tr><td>Drawing Number P-001</td></tr><tr><td>Dwg. of</td></tr></table>	Project Number 612A4-14-014	Building Number 700	Drawing Number P-001	Dwg. of	<table><tr><td>Office of Construction and Facilities Management</td></tr><tr><td> Department of Veterans Affairs</td></tr></table>	Office of Construction and Facilities Management	Department of Veterans Affairs
FINAL BID DOCUMENTS (14-236)	9/25/15																																													
100% CONSTRUCTION DOCUMENTS (14-230)	7/30/15																																													
50% CONSTRUCTION DOCUMENTS (14-220)	7/2/15																																													
100% DESIGN DEVELOPMENT (14-216)	5/29/15																																													
50% DESIGN DEVELOPMENT (14-199)	4/10/15																																													
ISSUE FOR 100% S.D. REVIEW (14-181)	2/20/15																																													
ISSUE FOR 50% S.D. REVIEW (14-126)	12/9/14																																													
Revisions:	Date																																													
Drawing Title PIPING MRI ADDITION NOTES, ABBREVIATIONS AND SYMBOLS																																														
Approved Project Director VAPAHCS PLANNING AND ENGINEERING																																														
Project Title MRI PROPOSED EXPANSION																																														
Location 10535 HOSPITAL WAY MATHER CA																																														
Date 8/17/15	Checked D. HAMMOND	Drawn J. ROTHMEN																																												
Project Number 612A4-14-014																																														
Building Number 700																																														
Drawing Number P-001																																														
Dwg. of																																														
Office of Construction and Facilities Management																																														
Department of Veterans Affairs																																														

A  
—  
B  
—  
C  
—  
D  
—  
E  
—  
F

three inches = one foot  
one and one half inches = one foot  
one inch = one foot  
three quarters inch = one foot  
one half inch = one foot  
three eighths inch = one foot  
one quarter inch = one foot  
one eighth inch = one foot



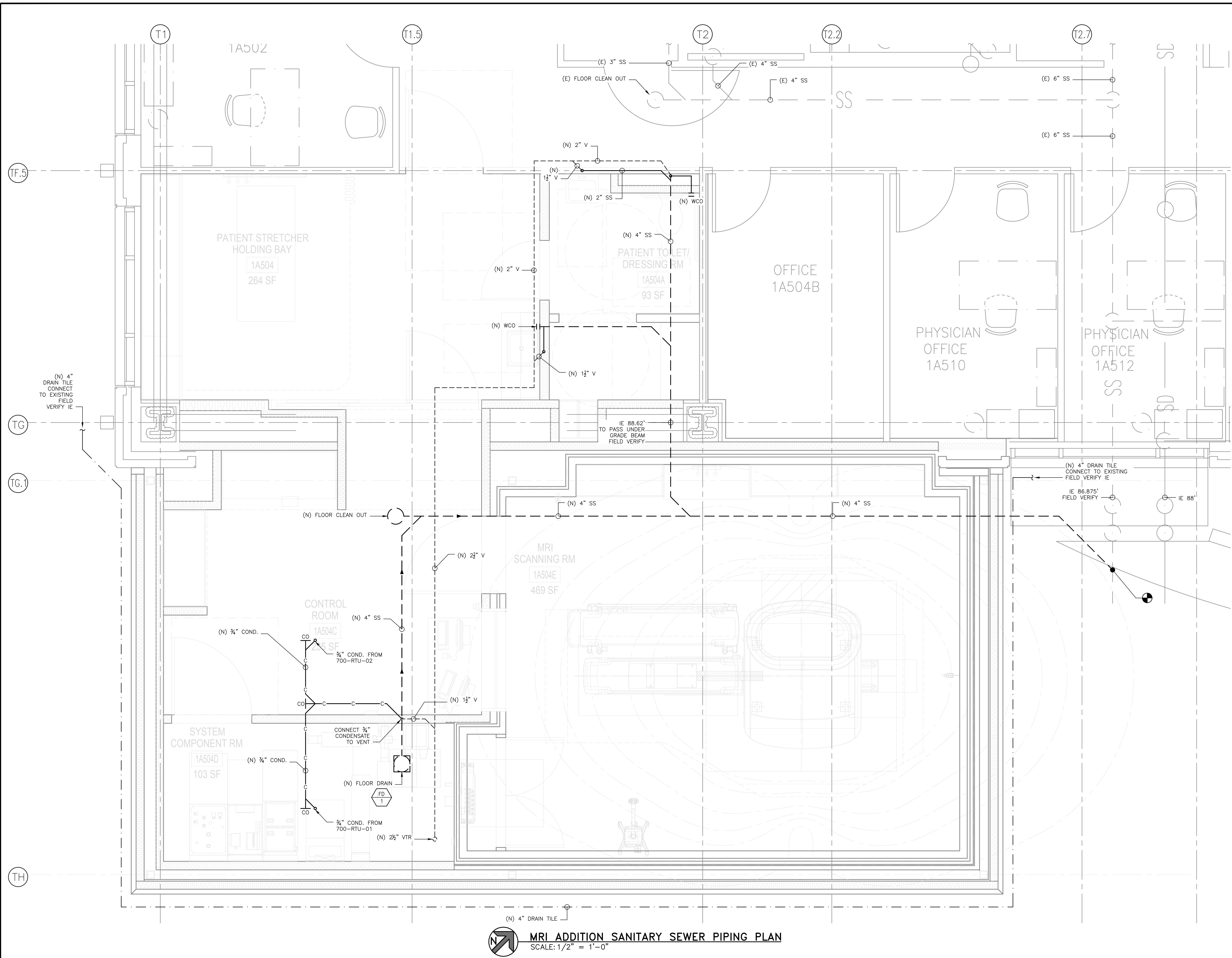
MRI ADDITION PLUMBING PLAN – DEMOLITION  
SCALE: 1/2" = 1'-0"

FINAL BID DOCUMENTS

<table><tr><td>FINAL BID DOCUMENTS (14-236)</td><td>9/25/15</td></tr><tr><td>100% CONSTRUCTION DOCUMENTS (14-230)</td><td>7/30/15</td></tr><tr><td>50% CONSTRUCTION DOCUMENTS (14-220)</td><td>7/2/15</td></tr><tr><td>100% DESIGN DEVELOPMENT (14-216)</td><td>5/29/15</td></tr><tr><td>50% DESIGN DEVELOPMENT (14-199)</td><td>4/10/15</td></tr><tr><td>ISSUE FOR 100% S.D. REVIEW (14-181)</td><td>2/20/15</td></tr><tr><td>ISSUE FOR 50% S.D. REVIEW (14-126)</td><td>12/9/14</td></tr></table>	FINAL BID DOCUMENTS (14-236)	9/25/15	100% CONSTRUCTION DOCUMENTS (14-230)	7/30/15	50% CONSTRUCTION DOCUMENTS (14-220)	7/2/15	100% DESIGN DEVELOPMENT (14-216)	5/29/15	50% DESIGN DEVELOPMENT (14-199)	4/10/15	ISSUE FOR 100% S.D. REVIEW (14-181)	2/20/15	ISSUE FOR 50% S.D. REVIEW (14-126)	12/9/14	CONSULTANTS:	STAMP: 	ARCHITECT/ENGINEERS:  998 PARK AVENUE SAN JOSE CALIFORNIA 95126 P: (408) 287-1881 F: (408) 294-3186 www.adcengineers.com PO# 14-308-41	Drawing Title PIPING MRI ADDITION PLUMBING PLAN - DEMOLITION Approved Project Director VAPA/HCS PLANNING AND ENGINEERING	Project Title MRI PROPOSED EXPANSION Location 10535 HOSPITAL WAY MATHER CA Date 8/17/15	Project Number 612A4-14-014 Building Number 700 Drawing Number PD-101 Dwg. of	Office of Construction and Facilities Management 
FINAL BID DOCUMENTS (14-236)	9/25/15																				
100% CONSTRUCTION DOCUMENTS (14-230)	7/30/15																				
50% CONSTRUCTION DOCUMENTS (14-220)	7/2/15																				
100% DESIGN DEVELOPMENT (14-216)	5/29/15																				
50% DESIGN DEVELOPMENT (14-199)	4/10/15																				
ISSUE FOR 100% S.D. REVIEW (14-181)	2/20/15																				
ISSUE FOR 50% S.D. REVIEW (14-126)	12/9/14																				



three inches = one foot  
one and one half inches = one foot  
one inch = one foot  
three quarters inch = one foot  
one half inch = one foot  
three eighths inch = one foot  
one eighth inch = one foot  
one quarter inch = one foot  
one eighth inch = one foot  
one eighth inch = one foot



GENERAL NOTES:

- 1 ALL SANITARY SEWER PIPE TO BE INSTALLED AT A 1/4" SLOPE PER FOOT.
- 2 COORDINATE INSTALLATION OF SS LINE UNDER THE MRI ROOM WITH STRUCTURAL.
- 3 SS TOP OF PIPE TO BE A MINIMUM OF 6" BELOW EXISTING GRADE BEAMS AT COLUMN LINE TG. GRADE BEAM ELEVATION AT 89.5'.
- 4 4" DRAIN TILE TO BE CONNECTED AT EXISTING BUILDING FOUNDATIONS. FIELD VERIFY (E) INVERT ELEVATIONS.

LEGEND:

- SANITARY SEWER PIPE BELOW SLAB
- CONDENSATE PIPE ABOVE CEILING
- VENT PIPE ABOVE CEILING
- DRAIN TILE

FINAL BID DOCUMENTS

FINAL BID DOCUMENTS (14-236)	9/25/15
100% CONSTRUCTION DOCUMENTS (14-230)	7/30/15
50% CONSTRUCTION DOCUMENTS (14-220)	7/2/15
100% DESIGN DEVELOPMENT (14-216)	5/29/15
50% DESIGN DEVELOPMENT (14-199)	4/10/15
ISSUE FOR 100% S.D. REVIEW (14-181)	2/20/15
ISSUE FOR 50% S.D. REVIEW (14-126)	12/9/14
Revisions:	Date

CONSULTANTS:

STAMP:



ARCHITECT/ENGINEERS:



ATTENTION:

ONLY WET SIGNED DOCUMENTS CONSTITUTE ADVANCE DESIGN CONSULTANTS, INC. PROFESSIONAL WORK AND BECAUSE OTHER REPRODUCIBLE DOCUMENTS MAY BE EASILY ALTERED WITHOUT THE CONSENT OF ADVANCE DESIGN CONSULTANTS, INC. THE WET SIGNED DOCUMENTS MUST BE KEPT ON FILE FOR THE ORIGINAL AND CORRECT INFORMATION. IF THERE ARE ANY DIFFERENCES BETWEEN THE WET SIGNED DOCUMENTS AND ANY OTHER DOCUMENTS, THE WET SIGNED DOCUMENTS SHALL GOVERN.

ADVANCE DESIGN CONSULTANTS, INC. IS NOT RESPONSIBLE FOR ANY MODIFICATIONS MADE TO OUR DOCUMENTS BY ANYONE OTHER THAN AUTHORIZED REPRESENTATIVES OF ADVANCE DESIGN CONSULTANTS, INC.

PO# 14-308-41

Drawing Title  
PIPING  
MRI ADDITION SANITARY  
SEWER PIPING PLAN

Approved Project Director  
VAPAHCS PLANNING AND ENGINEERING

Project Title  
MRI PROPOSED  
EXPANSION

Location  
10535 HOSPITAL WAY MATHER CA

Date  
8/17/15

Checked  
D. HAMMOND

Drawn  
J. ROTHWEN

Project Number  
612A4-14-014

Building Number  
700

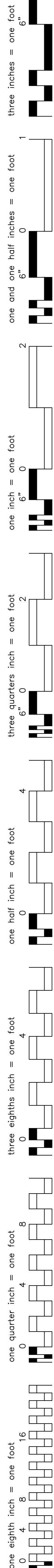
Drawing Number  
P-101

Dwg. of

Office of  
Construction  
and Facilities  
Management







FINAL BID DOCUMENTS (14-236)	9/25/15
100% CONSTRUCTION DOCUMENTS (14-230)	7/30/15
50% CONSTRUCTION DOCUMENTS (14-220)	7/2/15
100% DESIGN DEVELOPMENT (14-216)	5/29/15
50% DESIGN DEVELOPMENT (14-199)	4/10/15
ISSUE FOR 100% S.D. REVIEW (14-181)	2/20/15
ISSUE FOR 50% S.D. REVIEW (14-126)	12/9/14
Revisions:	Date

CONSULTANTS:	

**ARCHITECT/ENGINEERS:**

 **ADVANCE DESIGN CONSULTANTS, INC.**

998 PARK AVENUE SAN JOSE CALIFORNIA 95126  
**P: (408) 287-1881 F: (408)294-3186 [www.adengineers.com](http://www.adengineers.com)**

**ATTENTION:**

ONLY WEB SIGNED DOCUMENTS CONSTITUTE ADVANCE DESIGN CONSULTANTS, INC. PROFESSIONAL WORK AND BECAUSE OTHER REPRODUCIBLE DOCUMENTS MAY BE EASILY ALTERED WITHOUT THE CONSENT OF ADVANCE DESIGN CONSULTANTS, INC. THE WEB SIGNED DOCUMENTS MUST BE REFERRED TO FOR THE ORIGINAL AND CORRECT INFORMATION. ANY OTHER TYPE OF REPRODUCTION OF ANY TYPE OF DOCUMENT, OR ANY OTHER DOCUMENTS, THE WEB SIGNED DOCUMENTS SHALL GOVERN.

ADVANCE DESIGN CONSULTANTS, INC. IS NOT RESPONSIBLE FOR ANY MODIFICATIONS MADE TO OUR DOCUMENTS BY ANYONE OTHER THAN AUTHORIZED REPRESENTATIVES OF ADVANCE DESIGN CONSULTANTS, INC.

**PW# 14,308.41**

Drawing Title

**PIPING**  
**MRI ADDITION**  
**DOMESTIC WATER PIPING PLAN**

Approved: Project Director

**VAPAHCS PLANNING AND ENGINEERING**

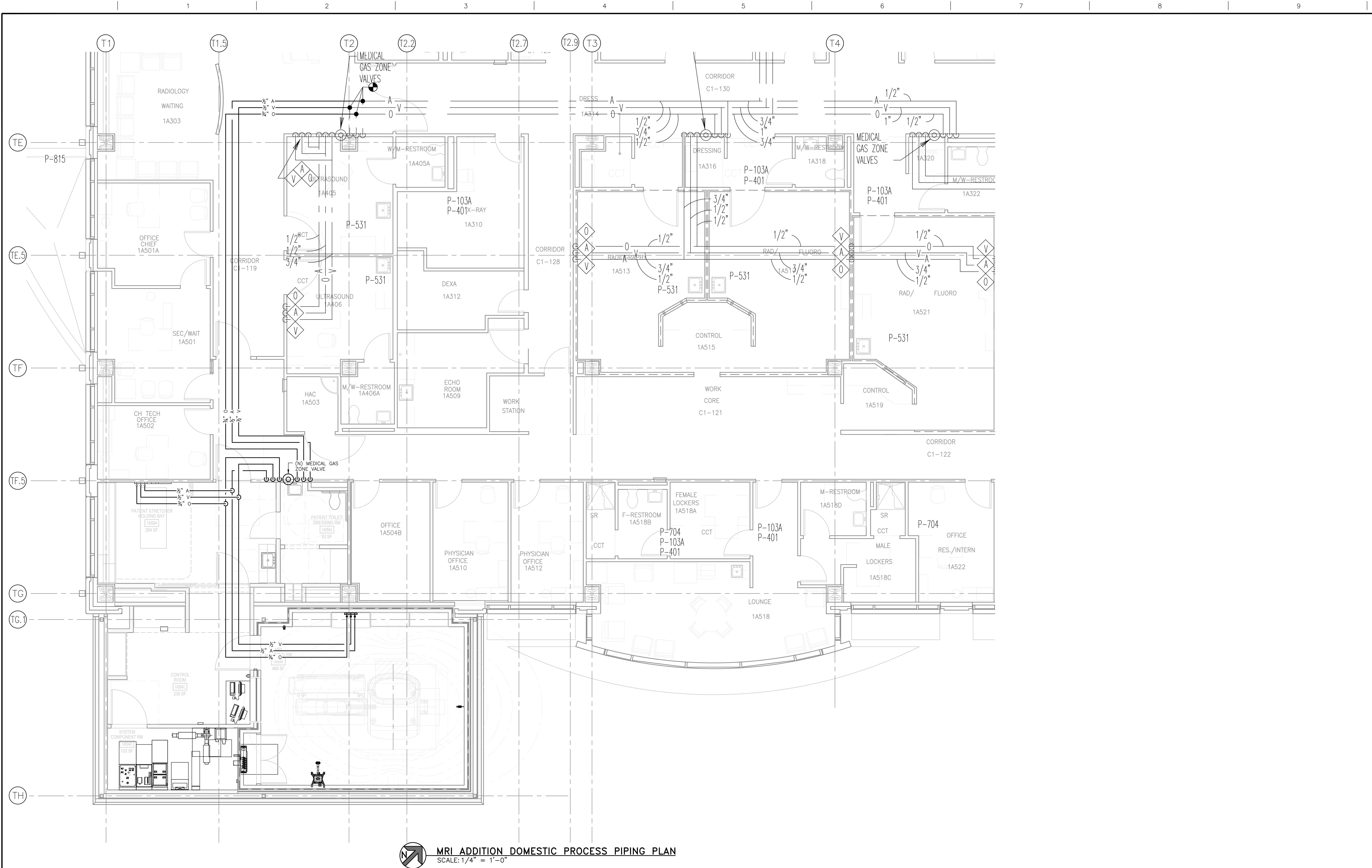
Project Title <b>MRI PROPOSED EXPANSION</b>		Project Number <b>612A4-14-014</b>	
Location <b>10535 HOSPITAL WAY</b>		Building Number <b>700</b>	
Drawing Number <b>P-102</b>		Date <b>8/77/15</b>	
Checked <b>D. HAMMOND</b>		Drawn <b>J. ROTHWEIN</b>	
Dwg. of			

Office of  
Construction  
and Facilities  
Management

 Department of  
Veterans Affairs



three inches = one foot  
one and one half inches = one foot  
one inch = one foot  
three quarters inch = one foot  
one half inch = one foot  
three eighths inch = one foot  
one quarter inch = one foot  
one eighth inch = one foot  
one eighth inch = one foot



FINAL BID DOCUMENTS

FINAL BID DOCUMENTS (14-236)	9/25/15
100% CONSTRUCTION DOCUMENTS (14-230)	7/30/15
50% CONSTRUCTION DOCUMENTS (14-220)	7/2/15
100% DESIGN DEVELOPMENT (14-216)	5/29/15
50% DESIGN DEVELOPMENT (14-199)	4/10/15
ISSUE FOR 100% S.D. REVIEW (14-181)	2/20/15
ISSUE FOR 50% S.D. REVIEW (14-126)	12/9/14
Revisions:	Date

CONSULTANTS:

STAMP:

ARCHITECT/ENGINEERS:
998 PARK AVENUE SAN JOSE CALIFORNIA 95126 P: (408) 287-1881 F: (408) 294-3186 www.adcengineers.com PO# 14-308-41

Drawing Title PIPING MRI ADDITION PROCESS PIPING PLAN
Approved Project Director VAPAHCS PLANNING AND ENGINEERING

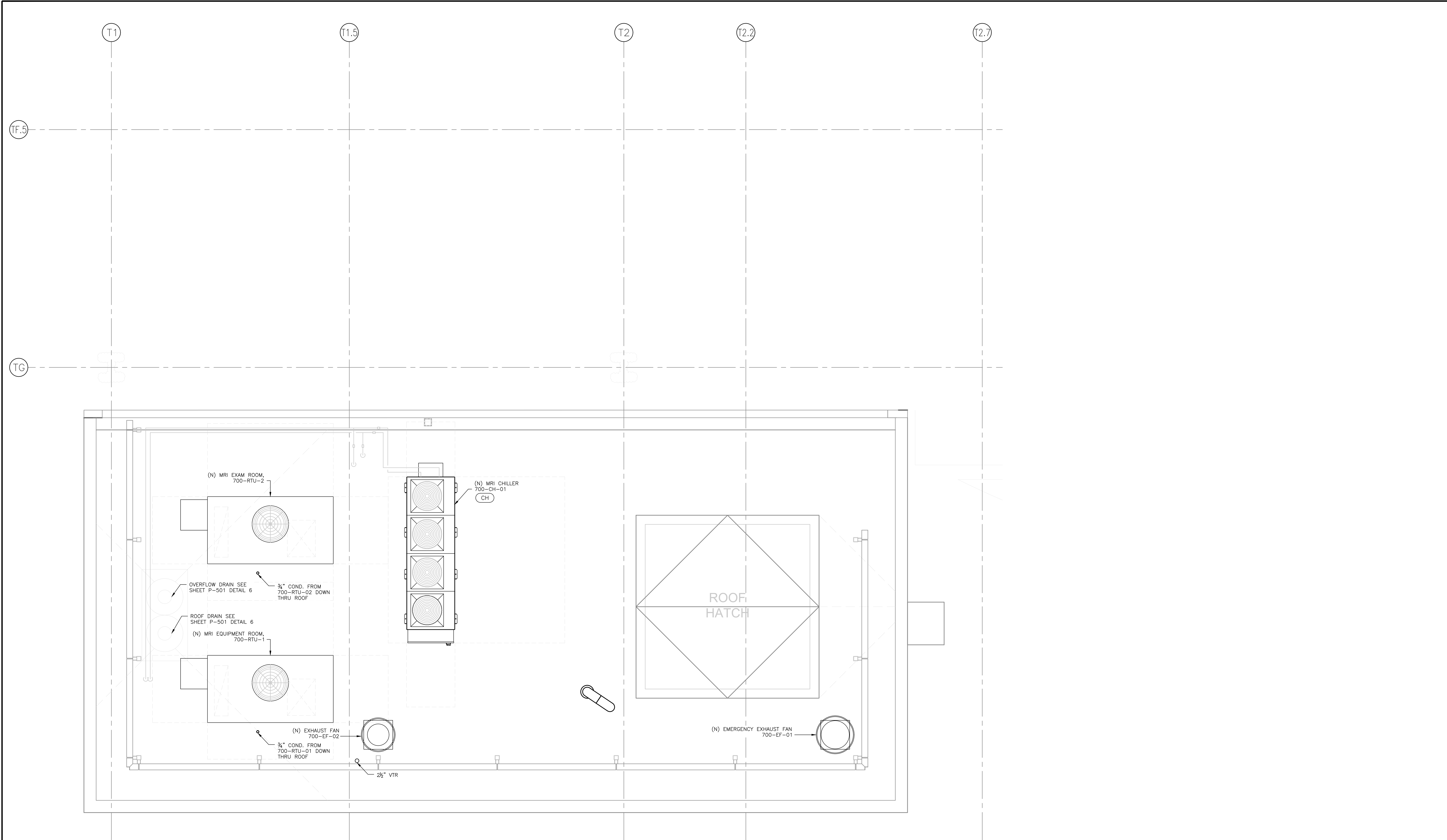
Project Title MRI PROPOSED EXPANSION
Location 10535 HOSPITAL WAY MATHER CA
Date 8/17/15
Checked D. HAMMOND
Drawn J. ROTHWEN


Project Number 612A4-14-014
Building Number 700
Drawing Number P-103
Dwg. of

Office of Construction and Facilities Management

1  
2  
3  
4  
5  
6  
7  
8  
9

three inches = one foot  
one and one half inches = one foot  
one inch = one foot  
three quarters inch = one foot  
one half inch = one foot  
three eighths inch = one foot  
one quarter inch = one foot  
one eighth inch = one foot



 **MRI ADDITION ROOF PIPING PLAN**  
SCALE: 1/2" = 1'-0"

FINAL BID DOCUMENTS

--	--	--	--	--	--	--	--	--	--	--	--	--	--	--	--	--	--	--	--	--	--	--	--	--	--	--	--	--	--	--	--	--	--	--	--	--	--	--	--	--	--	--	--	--	--	--	--	--	--	--	--	--	--	--	--	--	--	--	--	--	--	--	--	--	--	--	--	--	--	--	--	--	--	--	--	--	--	--	--	--	--	--	--	--	--	--	--	--	--	--	--	--	--	--	--	--	--	--	--	--	--	--	--	--	--	--	--	--	--	--	--	--	--	--	--	--	--	--	--	--	--	--	--	--	--	--	--	--	--	--	--	--	--	--	--	--	--	--	--	--	--	--	--	--	--	--	--	--	--	--	--	--	--	--	--	--	--	--	--	--	--	--	--	--	--	--	--	--	--	--	--	--	--	--	--	--	--	--	--	--	--	--	--	--	--	--	--	--	--	--	--	--	--	--	--	--	--	--	--	--	--	--	--	--	--	--	--	--	--	--	--	--	--	--	--	--	--	--	--	--	--	--	--	--	--	--	--	--	--	--	--	--	--	--	--	--	--	--	--	--	--	--	--	--	--	--	--	--	--	--	--	--	--	--	--	--	--	--	--	--	--	--	--	--	--	--	--	--	--	--	--	--	--	--	--	--	--	--	--	--	--	--	--	--	--	--	--	--	--	--	--	--	--	--	--	--	--	--	--	--	--	--	--	--	--	--	--	--	--	--	--	--	--	--	--	--	--	--	--	--	--	--	--	--	--	--	--	--	--	--	--	--	--	--	--	--	--	--	--	--	--	--	--	--	--	--	--	--	--	--	--	--	--	--	--	--	--	--	--	--	--	--	--	--	--	--	--	--	--	--	--	--	--	--	--	--	--	--	--	--	--	--	--	--	--	--	--	--	--	--	--	--	--	--	--	--	--	--	--	--	--	--	--	--	--	--	--	--	--	--	--	--	--	--	--	--	--	--	--	--	--	--	--	--	--	--	--	--	--	--	--	--	--	--	--	--	--	--	--	--	--	--	--	--	--	--	--	--	--	--	--	--	--	--	--	--	--	--	--	--	--	--	--	--	--	--	--	--	--	--	--	--	--	--	--	--	--	--	--	--	--	--	--	--	--	--	--	--	--	--	--	--	--	--	--	--	--	--	--	--	--	--	--	--	--	--	--	--	--	--	--	--	--	--	--	--	--	--	--	--	--	--	--	--	--	--	--	--	--	--	--	--	--	--	--	--	--	--	--	--	--	--	--	--	--	--	--	--	--	--	--	--	--	--	--	--	--	--	--	--	--	--	--	--	--	--	--	--	--	--	--	--	--	--	--	--	--	--	--	--	--	--	--	--	--	--	--	--	--	--	--	--	--	--	--	--	--	--	--	--	--	--	--	--	--	--	--	--	--	--	--	--	--	--	--	--	--	--	--	--	--	--	--	--	--	--	--	--	--	--	--	--	--	--	--	--	--	--	--	--	--	--	--	--	--	--	--	--	--	--	--	--	--	--	--	--	--	--	--	--	--	--	--	--	--	--	--	--	--	--	--	--	--	--	--	--	--	--	--	--	--	--	--	--	--	--	--	--	--	--	--	--	--	--	--	--	--	--	--	--	--	--	--	--	--	--	--	--	--	--	--	--	--	--	--	--	--	--	--	--	--	--	--	--	--	--	--	--	--	--	--	--	--	--	--	--	--	--	--	--	--	--	--	--	--	--	--	--	--	--	--	--	--	--	--	--	--	--	--	--	--	--	--	--	--	--	--	--	--	--	--	--	--	--	--	--	--	--	--	--	--	--	--	--	--	--	--	--	--	--	--	--	--	--	--	--	--	--	--	--	--	--	--	--	--	--	--	--	--	--	--	--	--	--	--	--	--	--	--	--	--	--	--	--	--	--	--	--	--	--	--	--	--	--	--	--	--	--	--	--	--	--	--	--	--	--	--	--	--	--	--	--	--	--	--	--	--	--	--	--	--	--	--	--	--	--	--	--	--	--	--	--	--	--	--	--	--	--	--	--	--	--	--	--	--	--	--	--	--	--	--	--	--	--	--	--	--	--	--	--	--	--	--	--	--	--	--	--	--	--	--	--	--	--	--	--	--	--	--	--	--	--	--	--	--	--	--	--	--	--	--	--	--	--	--	--	--	--	--	--	--	--	--	--	--	--	--	--	--	--	--	--	--	--	--	--	--	--	--	--	--	--	--	--	--	--	--	--	--	--	--	--	--	--	--	--	--	--	--	--	--	--	--	--	--	--	--	--	--	--	--	--	--	--	--	--	--	--	--	--	--	--	--	--	--	--	--	--	--	--	--	--	--	--	--	--	--	--	--	--	--	--	--	--	--	--	--	--	--	--	--	--	--	--	--	--	--	--	--	--	--	--	--	--	--	--	--	--	--	--	--	--	--	--	--	--	--	--	--	--	--	--	--	--	--	--	--	--	--	--	--	--	--	--	--	--	--	--	--	--	--	--	--	--	--	--	--	--	--	--	--	--	--	--	--	--	--	--	--	--	--	--	--	--	--	--	--	--	--	--	--	--	--	--	--	--	--	--	--	--	--	--	--	--	--	--	--	--	--	--	--	--	--	--	--	--	--	--	--	--	--	--	--	--	--	--	--	--	--	--	--	--	--	--	--	--	--	--	--	--	--	--	--	--	--	--	--	--	--	--	--	--	--	--	--	--	--	--	--	--	--	--	--	--	--	--	--	--	--	--	--	--	--	--	--	--	--	--	--	--	--	--	--	--	--	--	--	--	--	--	--	--	--	--	--	--	--	--	--	--	--	--	--	--	--	--	--	--	--	--	--	--	--	--	--	--	--	--	--	--	--	--	--	--	--	--	--	--	--	--	--	--	--	--	--	--	--	--	--	--	--	--	--	--	--	--	--	--	--	--	--	--	--	--	--	--	--	--	--	--	--	--	--	--	--	--	--	--	--	--	--	--	--	--	--	--	--	--	--	--	--	--	--	--	--	--	--	--	--	--	--	--	--	--	--	--	--	--	--	--	--	--	--	--	--	--	--	--	--	--	--	--	--	--	--	--	--	--	--	--	--	--	--	--	--	--	--	--	--	--	--	--	--	--	--	--	--	--	--	--	--	--	--	--	--	--	--	--	--	--	--	--	--	--	--	--	--



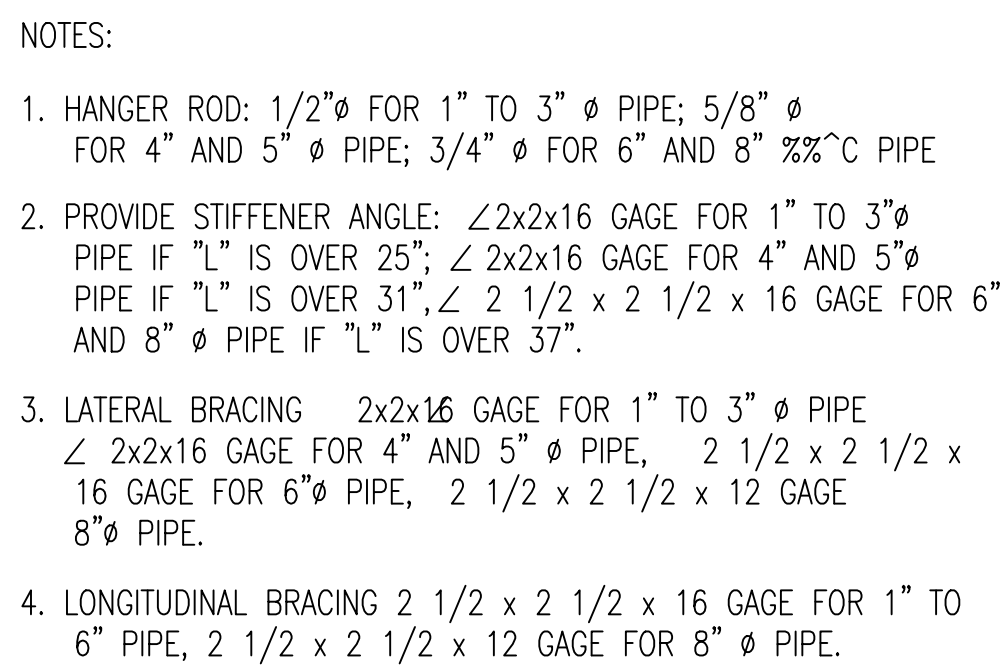


Diagram illustrating the installation of a cleanout tee. The diagram shows a vertical waste line extending from a horizontal waste line. The vertical waste line is labeled "WASTE LINE EXTENSION". The horizontal waste line is labeled "WASTE LINE". The connection is made using a "CLEANOUT TEE". The cleanout tee has a "CLEANOUT PLUG" on top, which is secured by a "COUNTERSUNK SCREW". The cleanout tee is mounted on a "FINISHED FLOOR" using a "POLISHED S.S. ACCESS COVER". The cleanout tee is labeled "C.I. CLEANOUT TEE". The cleanout tee is connected to the horizontal waste line using a "1/4\" BEND OR COMBINATION Y\" & 1/8\" BEND". The cleanout tee is also connected to the vertical waste line using a "1/4\" BEND OR COMBINATION Y\" & 1/8\" BEND". The cleanout tee is labeled "MAY EXTEND AS WASTE OR VENT". The cleanout tee is also labeled "WALL CONSTRUCTION SEE ARCH. DWGS.".

CLEAN-OUT COVER

CSK SCREW

CLEAN-OUT PLUG

FINISHED FLOOR

CONCRETE SURFACE OR FLOOR COVERING AS REQUIRED

CAULKING FERRULE

Diagram illustrating the components and dimensions of a floor drain assembly:

- FLOOR LINE
- 2'-0" x 2'-0" BLOCKOUT
- NON TRAFFIC GRATE
- TRAFFIC GRATE
- 1/2" RAISED FLANGE
- FLASHING CLAMP
- DRAIN BODY
- FULL GRATE UNLESS OTHERWISE SCHEDULED OR SPECIFIED
- DOME STRAINER
- FLOOR SINK OUTLET (2" MINIMUM)
- 3" WASTE MINIMUM
- NO HUB CLAMP (TYP.)

OVERFLOW DRAIN

ROOF DRAIN

FINISHED ROOF

WATERPROOF MEMBRANE

INSULATION

ROOF DECK

FINAL BID DOCUMENTS (14-236)	9/25/15
100% CONSTRUCTION DOCUMENTS (14-230)	7/30/15
50% CONSTRUCTION DOCUMENTS (14-220)	7/2/15
100% DESIGN DEVELOPMENT (14-216)	5/29/15
50% DESIGN DEVELOPMENT (14-199)	4/10/15
ISSUE FOR 100% S.D. REVIEW (14-181)	2/20/15
ISSUE FOR 50% S.D. REVIEW (14-126)	12/9/14
Revisions:	Date

 **ADVANCE DESIGN  
CONSULTANTS, INC.**  
998 PARK AVENUE SAN JOSE CALIFORNIA 95126  
P: (408) 287-1881 F: (408) 294-3186 [www.adcengineers.com](http://www.adcengineers.com)

ONLY WET SIGNED DOCUMENTS CONSTITUTE ADVANCE DESIGN CONSULTANTS, INC. PROFESSIONAL WORK AND BECAUSE OTHER REPRODUCIBLE DOCUMENTS MAY BE EASILY ALTERED WITHOUT THE CONSENT OF ADVANCE DESIGN CONSULTANTS, INC., THE WET SIGNED DOCUMENTS MUST BE REFERRED TO FOR THE ORIGINAL AND CORRECT INFORMATION; IF THERE ANY DIFFERENCES BETWEEN THE WET SIGNED DOCUMENTS AND ANY OTHER DOCUMENTS, THE WET SIGNED DOCUMENTS SHALL GOVERN.

ADVANCE DESIGN CONSULTANTS, INC. IS NOT RESPONSIBLE FOR ANY MODIFICATIONS MADE TO OUR DOCUMENTS BY ANYONE OTHER THAN AUTHORIZED REPRESENTATIVES OF ADVANCE DESIGN CONSULTANTS, INC.

PC# 14-308-41

 Department of  
Veterans Affairs

A

B

C

D

E

F

A

B

C

D

E


F

three inches = one foot  
one and one half inches = one foot  
one inch = one foot  
three quarters inch = one foot  
one half inch = one foot  
three eighths inch = one foot  
one quarter inch = one foot  
one eighth inch = one foot

FINAL BID DOCUMENTS

FINAL BID DOCUMENTS (14-236)	9/25/15
100% CONSTRUCTION DOCUMENTS (14-230)	7/30/15
50% CONSTRUCTION DOCUMENTS (14-220)	7/2/15
100% DESIGN DEVELOPMENT (14-216)	5/29/15
50% DESIGN DEVELOPMENT (14-199)	4/10/15
ISSUE FOR 100% S.D. REVIEW (14-181)	2/20/15
ISSUE FOR 50% S.D. REVIEW (14-126)	12/9/14
Revisions:	Date

CONSULTANTS:


STAMP:


ARCHITECT/ENGINEERS:
 <b>ADVANCE DESIGN CONSULTANTS, INC.</b> 998 PARK AVENUE SAN JOSE CALIFORNIA 95126 P: (408) 287-1881 F: (408)294-3186 www.adcengineers.com <small>ATTENTION: ONLY WET SIGNED DOCUMENTS CONSTITUTE ADVANCE DESIGN CONSULTANTS, INC. PROFESSIONAL WORK AND BECAUSE OTHER REPRODUCIBLE DOCUMENTS MAY BE EASILY ALTERED WITHOUT THE CONSENT OF ADVANCE DESIGN CONSULTANTS, INC., THE WET SIGNED DOCUMENTS MUST BE KEPT FOR THE ORIGINAL AND CORRECT INFORMATION. IF THERE ARE ANY DIFFERENCES BETWEEN THE WET SIGNED DOCUMENTS AND ANY OTHER DOCUMENTS, THE WET SIGNED DOCUMENTS SHALL GOVERN. ADVANCE DESIGN CONSULTANTS, INC. IS NOT RESPONSIBLE FOR ANY MODIFICATIONS MADE TO OUR DOCUMENTS BY ANYONE OTHER THAN AUTHORIZED REPRESENTATIVES OF ADVANCE DESIGN CONSULTANTS, INC. PO# 14-308-41</small>

Drawing Title PIPING MRI ADDITION EQUIPMENT SCHEDULES
Approved Project Director VAPAHCs PLANNING AND ENGINEERING

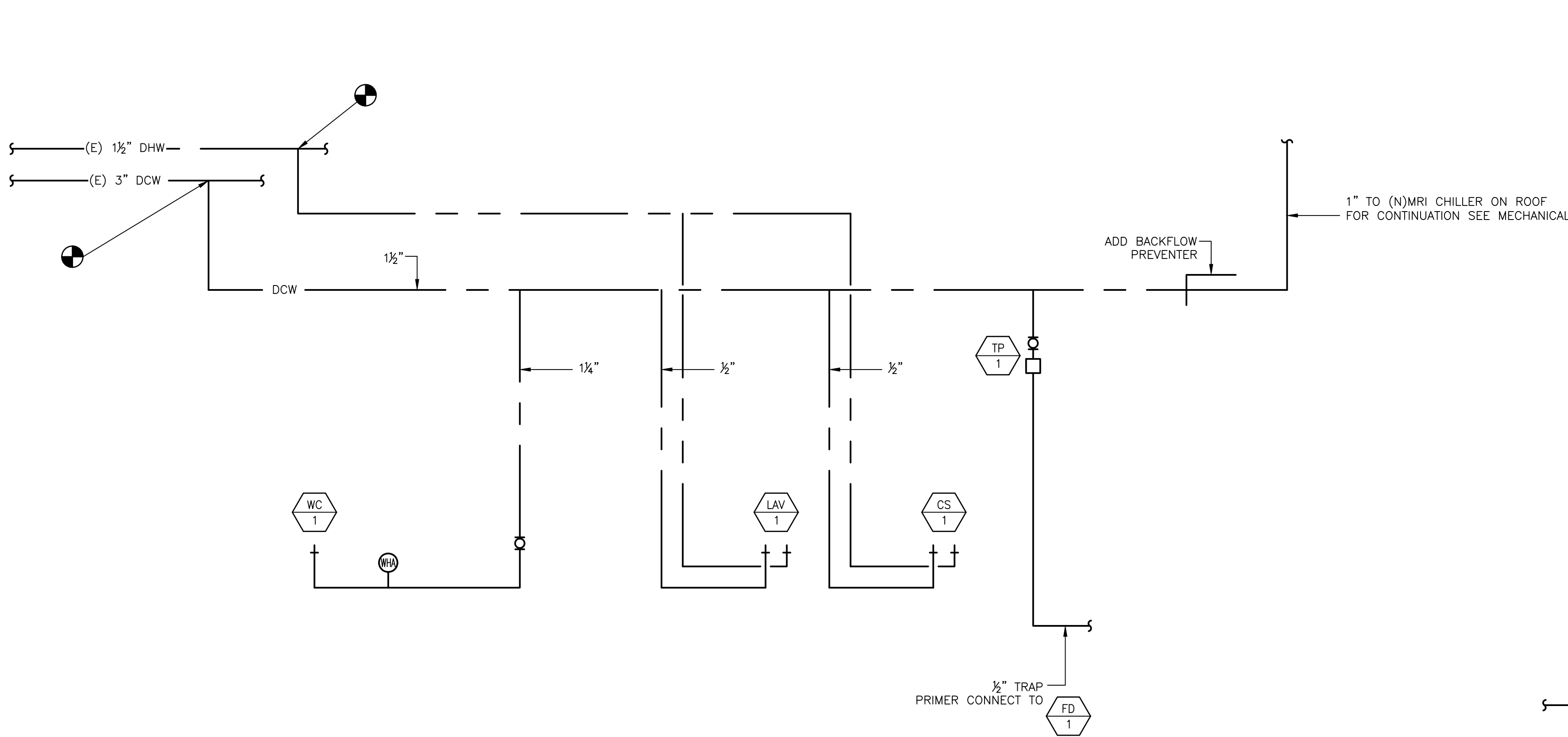
Project Title MRI PROPOSED EXPANSION
Location 10535 HOSPITAL WAY MATHER CA
Date 8/17/15
Checked D. HAMMOND
Drawn J. ROTHWEN

Project Number 612A4-14-014
Building Number 700
Drawing Number P-601
Dwg. of

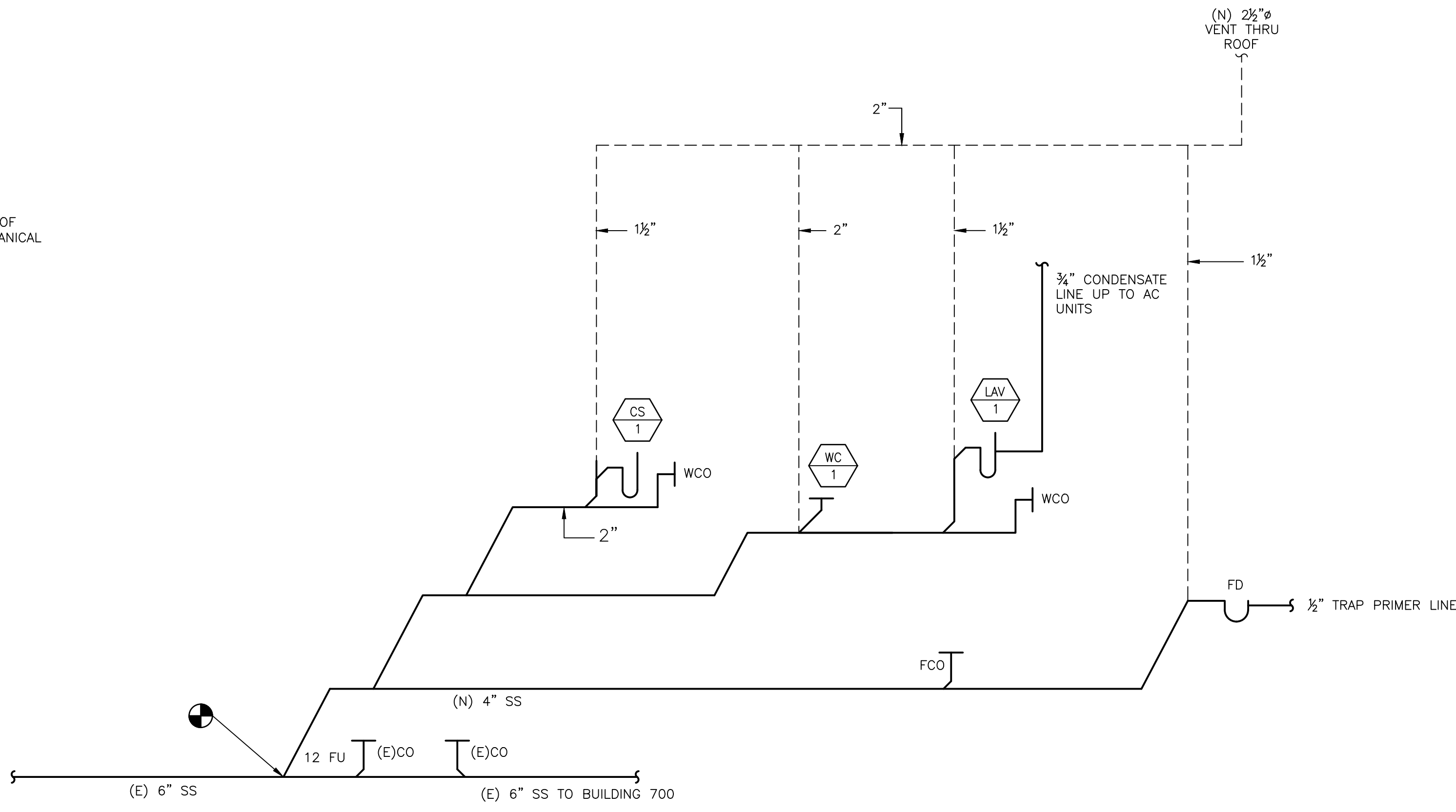
Office of Construction and Facilities Management
 Department of Veterans Affairs



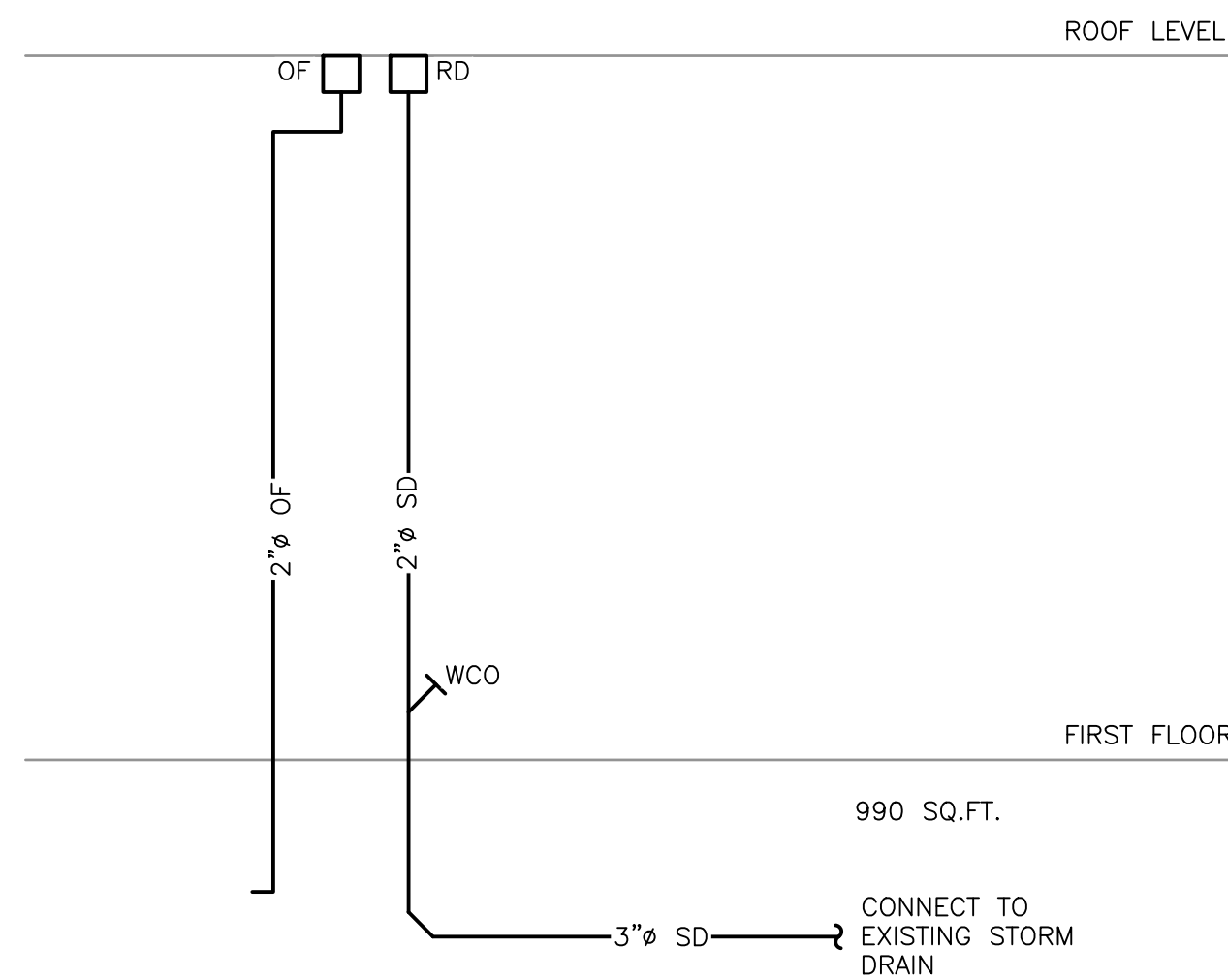
three inches = one foot  
one and one half inches = one foot  
one inch = one foot  
one inch = one foot  
three quarters inch = one foot  
one half inch = one foot  
three eighths inch = one foot  
one quarter inch = one foot  
one eighth inch = one foot



1 DOMESTIC WATER RISER DIAGRAM  
SCALE: N.T.S.



2 WASTE AND VENT RISER DIAGRAM  
SCALE: N.T.S.

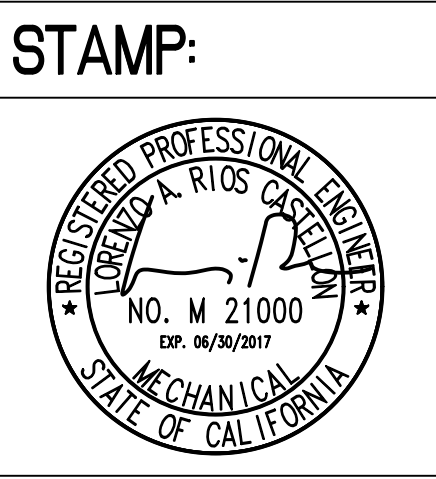


3 RAIN WATER & OVERFLOW DRAIN RISER DIAGRAM  
SCALE: N.T.S.

## FINAL BID DOCUMENTS

FINAL BID DOCUMENTS (14-236)	9/25/15
100% CONSTRUCTION DOCUMENTS (14-230)	7/30/15
50% CONSTRUCTION DOCUMENTS (14-220)	7/2/15
100% DESIGN DEVELOPMENT (14-216)	5/29/15
50% DESIGN DEVELOPMENT (14-199)	4/10/15
ISSUE FOR 100% S.D. REVIEW (14-181)	2/20/15
ISSUE FOR 50% S.D. REVIEW (14-126)	12/9/14
Revisions:	Date

CONSULTANTS:



ARCHITECT/ENGINEERS:

**ADVANCE DESIGN CONSULTANTS, INC.**

998 PARK AVENUE SAN JOSE CALIFORNIA 95126  
P: (408) 287-1881 F: (408) 294-3186 www.adcengineers.com

ATTENTION:  
ONLY WET SIGNED DOCUMENTS CONSTITUTE ADVANCE DESIGN CONSULTANTS, INC. PROFESSIONAL WORK AND BECAUSE OTHER REPRODUCIBLE DOCUMENTS MAY BE EASILY ALTERED WITHOUT THE CONSENT OF ADVANCE DESIGN CONSULTANTS, INC., THE WET SIGNED DOCUMENTS MUST BE REFERRED TO FOR THE ORIGINAL AND CORRECT INFORMATION. IF THERE ARE ANY DIFFERENCES BETWEEN THE WET SIGNED DOCUMENTS AND ANY OTHER DOCUMENTS, THE WET SIGNED DOCUMENTS SHALL GOVERN.  
PO# 14-308-41

Drawing Title  
**PIPING MRI ADDITION DOMESTIC WATER WASTE/VENT AND STORM DRAIN RISER DIAGRAMS**

Approved Project Director  
**VAPAHCS PLANNING AND ENGINEERING**

Project Title  
**MRI PROPOSED EXPANSION**

Location  
**10535 HOSPITAL WAY MATHER CA**

Date  
**8/17/15**

Checked  
**D. HAMMOND**

Drawn  
**J. ROTHWEIN**

Project Number  
**612A4-14-014**

Building Number  
**700**

Drawing Number  
**P-602**

Dwg. of

Office of Construction and Facilities Management

Department of Veterans Affairs