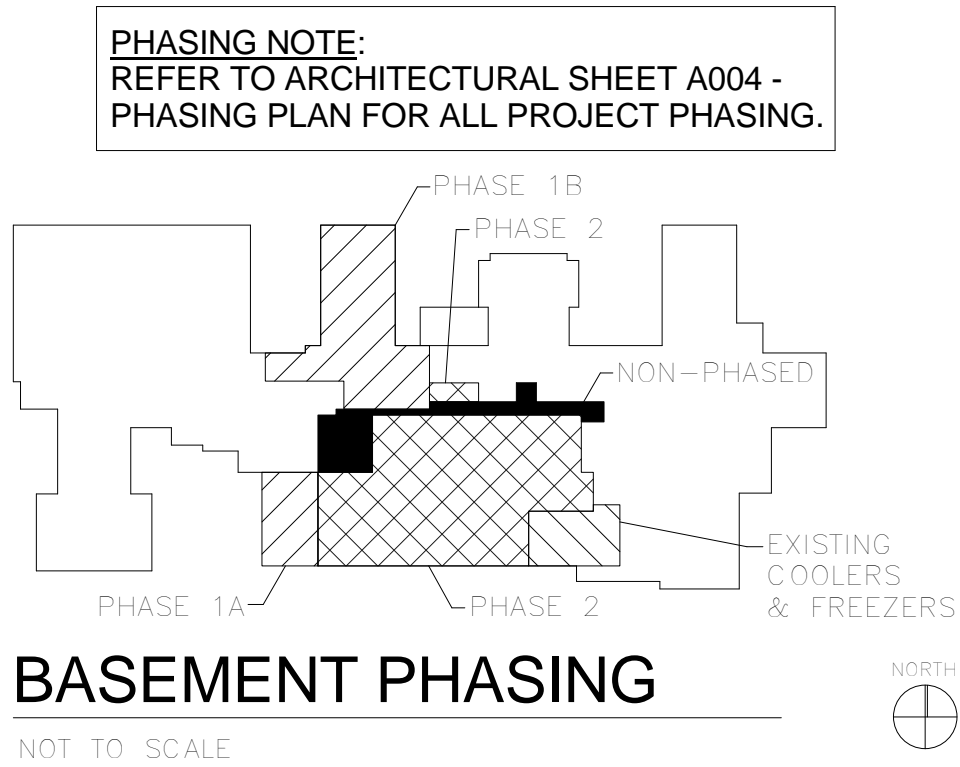


three inches = one foot
one and one half inches = one foot
one inch = one foot
three quarters inch = one foot
three eighths inch = one foot
one half inch = one foot
one quarter inch = one foot
one eighth inch = one foot
one eighth inch = one foot



ABBREVIATIONS	
AG	ABOVE GRADE
ADD	ADDENDUM
ADDL	ADDITIONAL
ADJ	ADJUSTABLE
AF	ABOVE FINISH FLOOR
AFG	ABOVE FINISH GRADE
ALT	ALTERNATE
BG	BELOW GRADE
CA	COMPRESSED AIR
CO	CLEANOUT
COL	COLUMN
CW	COLD WATER
DN	DOWN
EC	ELECTRICAL CONTRACTOR
EQ	EQUAL
FCO	FLOOR CLEANOUT
FD	FLOOR DRAIN
FLR	FLOOR
FOR	FUEL OIL RETURN
FOS	FUEL OIL SUPPLY
FOV	FUEL OIL VENT
FT	FOOT (FEET)
F	FURNACE
GAL	GALLON
GC	GENERAL CONTRACTOR
GPM	GALLONS PER MINUTE
HW	HOT WATER
MC	MECHANICAL CONTRACTOR
MECH	MECHANICAL
MIN	MINIMUM
NTS	NOT TO SCALE
NPCW	NON POTABLE COLD WATER
PC	PLUMBING CONTRACTOR
PLBG	PLUMBING
PRES	PRESSURE
QTY	QUANTITY
SAN	SANITARY
SCH	SCHEDULE
SPEC	SPECIFICATIONS
SS	STAINLESS STEEL
TEMP	TEMPORARY
TYP	TYPICAL
VTR	VENT THRU ROOF
W/	WITH
WCO	WALL CLEANOUT
WC	WATER CLOSET

- FIRE PROTECTION RENOVATION NOTES**
- WHERE EXISTING SURFACES ARE DISRUPTED DUE TO THE REMOVAL OF EXISTING EQUIPMENT OR PIPING, THIS CONTRACTOR SHALL BE RESPONSIBLE FOR THE REPAIR OF DISRUPTED SURFACES TO MATCH EXISTING ADJACENT SURFACES.
 - EXISTING CONDITIONS AS SHOWN ON THE DRAWINGS ARE TAKEN FROM ORIGINAL AND AS-BUILT DRAWINGS OF THE BUILDING AND IN PART ARE UNVERIFIED. FIELD CONDITIONS SHALL GOVERN. ALL EXISTING CONDITIONS MUST BE VERIFIED PRIOR TO INITIATION OF WORK.
 - ALL EXISTING FIRE PROTECTION PIPING SHALL BE RELOCATED TO CREATE REQUIRED SPACE FOR INSTALLATION OF ALL NEW SERVICES FOR NEW CONSTRUCTION, INCLUDING BUT NOT LIMITED TO H.V.A.C., ELECTRICAL, AND PLUMBING TRADES. CONTRACTOR SHALL INCLUDE ALL NEW PIPING AND FITTINGS REQUIRED AND RELOCATE ANY AND ALL EXISTING SERVICES.
 - ALL EXISTING FIRE PROTECTION PIPING, NOT REMAINING IN SERVICE AFTER NEW CONSTRUCTION, SHALL BE REMOVED.
 - PIPING WHICH IS TO REMAIN IN SERVICE SHALL NOT BE DISTURBED. EXISTING PIPING DAMAGED DURING CONSTRUCTION SHALL BE REPLACED WITH NEW PIPING OF THE SAME SIZE AND MATERIAL.
 - COORDINATE WITH GENERAL CONTRACTOR TO PATCH ALL EXISTING WALLS, FLOORS, CEILINGS, ETC., AS REQUIRED BY NEW WORK.
 - CONTRACTOR SHALL NOTIFY THE COR TWO WEEKS IN ADVANCE OF ANY PROPOSED SHUTDOWN OF THE FP SYSTEM. ALL FP SHUTDOWNS WILL REQUIRE COR AUTHORIZATION. THE EXISTING FP SYSTEM SHALL REMAIN IN SERVICE AS LONG AS POSSIBLE THROUGH DEMOLITION AS DETERMINED BY OWNER.
 - ENSURE INTERIM LIFE SAFETY MEASURES ARE IN PLACE WHEN THE SPRINKLER SYSTEM IS TAKEN OUT OF SERVICE.

FIRE PROTECTION SYMBOL LEGEND	
	SHUTOFF VALVE
	END CAP
	FLOW SWITCH
	NEW TO EXISTING POINT OF CONNECTION SYMBOL
	CONCEALED SPRINKLER HEAD
	CONCEALED CLEAN ROOM SPRINKLER HEAD
	UPRIGHT SPRINKLER HEAD
	SIDEWALL SPRINKLER HEAD

FIRE PROTECTION PIPING LINETYPES	
LINETYPE	DESCRIPTION
----	DEMOLITION
=====	NEW - ABOVE GRADE
-----	EXISTING - ABOVE GRADE

- FIRE PROTECTION GENERAL NOTES**
- COORDINATE INSTALLATION OF SPRINKLER PIPING AND ALL COMPONENTS WITH OTHER TRADES, OWNER, AND GENERAL CONTRACTOR.
 - CONTRACTOR IS RESPONSIBLE FOR REMOVING AND REINSTALLING ALL CEILING COMPONENTS AS REQUIRED TO INSTALL SPRINKLER PIPING AND HEADS IN.
 - FIRE PROTECTION SYSTEM TO COMPLY WITH NFPA #13, INSURANCE CARRIER AND ALL APPLICABLE STATE AND LOCAL CODES.
 - FIRE PROTECTION CONTRACTOR SHALL VISIT SITE PRIOR TO BID VERIFY ALL EXISTING CONDITIONS PRIOR TO BIDDING TO INSURE THE COORDINATION OF THE FIRE SERVICES WITH EXISTING CONDITIONS. WORK INDICATED ON THE DRAWINGS IS BASED ON THE BEST AVAILABLE INFORMATION CONCERNING LOCATIONS AND SIZES OF SPRINKLER PIPING.
 - CUTTING OF STRUCTURAL AND/OR ARCHITECTURAL MEMBERS TO BE DONE ONLY WITH THE WRITTEN APPROVAL OF THE ARCHITECT AND STRUCTURAL ENGINEER.
 - SPRINKLER HEAD LOCATIONS ARE FOR SCHEMATIC USE AND ANY ADDITIONAL HEADS REQUIRED PER CODE SHALL BE INSTALLED. VERIFY STRUCTURAL, MECHANICAL, ELECTRICAL INSTALLATIONS AND AVOID OBSTRUCTIONS OR INTERFERENCES.
 - PROVIDE MINIMUM 5 PSI SAFETY FACTOR.
 - WORKING DRAWINGS SHALL INDICATE SPRINKLER HEAD LOCATIONS AND EXPOSED AND CONCEALED PIPE ROUTING. DRAWINGS SHALL BE PROVIDED TO THE ARCHITECT/ENGINEER PRIOR TO INSTALLATION FOR APPROVAL.
 - FIRE PROTECTION CONTRACTOR SHALL BE REQUIRED TO PARTICIPATE IN THE COORDINATION MEETINGS AND COORDINATION PLAN DEVELOPMENT WITH OTHER TRADES AND THE GC PRIOR TO INSTALLATION IN ORDER TO INSTALL FP PIPING AND OTHER FP COMPONENTS IN OPTIMUM LOCATION FOR DRAINING THE FP SYSTEM AND MAINTAINING ACCESSIBILITY ABOVE THE CEILING.
 - ALL SPRINKLER HEADS SHALL BE INSTALLED CENTER OF TILE.
 - THE USE OF U-BOLT MECHANICAL TEES ALSO KNOWN AS "JACK TEES" IS PROHIBITED.
 - SPRINKLER HEADS ARE TO BE COORDINATED WITH ALL DIFFUSERS, SPEAKERS, LIGHTING FIXTURES, CEILING SYSTEMS AND STRUCTURAL SYSTEM.
 - FIRE STOP ALL PENETRATIONS OF SMOKE/FIRE WALLS, CEILINGS, AND FLOORS.
 - CONTRACTOR SHALL REMOVE AND REINSTALL EXISTING ATC CEILING AS REQUIRED FOR DEMOLITION AND NEW WORK. CONTRACTOR TO REPLACE ANY DAMAGED CEILING TILES TO MATCH EXISTING.
 - WORK IN CORRIDORS SHALL BE PERFORMED AFTER NORMAL BUSINESS HOURS.
 - ALL SPRINKLER PIPING SHALL BE SCHEDULE 40.
 - COORDINATE SHUTDOWN AND INTERRUPTIONS WITH OWNER A MINIMUM OF 10 DAYS IN ADVANCE.
 - AUXILIARY DRAINS IN CEILING SPACE SHALL BE PROVIDED WITH CAPPED HOSE CONNECTIONS.
 - REFER TO ARCHITECTURAL PHASING PLAN FOR PROJECT PHASING. COORDINATE REQUIRED WORK WITH ALL OTHER TRADES FOR EACH PHASE. CONTRACTOR SHALL MAINTAIN PROJECT DEADLINES FOR EACH PHASE AND COORDINATE AREA OF WORK AND SHUTDOWNS WITH OWNER AND ARCHITECT.
 - FIRE PROTECTION PIPING SHALL NOT COME IN CONTACT WITH ANY OTHER TRADES AND SHALL BE SUPPORTED INDEPENDENTLY FROM ALL OTHER TRADES.
 - REFER TO SPEC SECTION 01 11 00 SUMMARY OF WORK FOR BID ALTERNATES. COORDINATE WITH COR.

FIRE PROTECTION SHEET INDEX	
FP001	FIRE PROTECTION COVER SHEET
FPD100	FIRE PROTECTION DEMOLITION PLAN - BASEMENT - OVERALL
FPD101	FIRE PROTECTION DEMOLITION PLAN - BASEMENT - PART A
FPD102	FIRE PROTECTION DEMOLITION PLAN - BASEMENT - PART C
FPD103	FIRE PROTECTION DEMOLITION PLAN - BASEMENT - PART D
FPD201	FIRE PROTECTION DEMOLITION PLAN - 3RD FLOOR
FP100	FIRE PROTECTION PLAN - BASEMENT - OVERALL
FP101	FIRE PROTECTION PLAN - BASEMENT - PART A
FP102	FIRE PROTECTION PLAN - BASEMENT - PART C
FP103	FIRE PROTECTION PLAN - BASEMENT - PART D
FP201	FIRE PROTECTION PLAN - 3RD FLOOR

		CONSULTANTS:		ARCHITECT/ENGINEERS:		Drawing Title FIRE PROTECTION COVER SHEET		Project Title Renovate 3 East For Specialty Clinics		Project Number 585-12-124		Office of Construction and Facilities Management	
						Approved: Project Director		Location IRON MOUNTAIN, MICHIGAN		Building Number 1			
								Date 04/08/2016		Checked TCC		Drawn NCF	
										Drawing Number FP001		Dwg. 43 of 200	
												Department of Veterans Affairs	

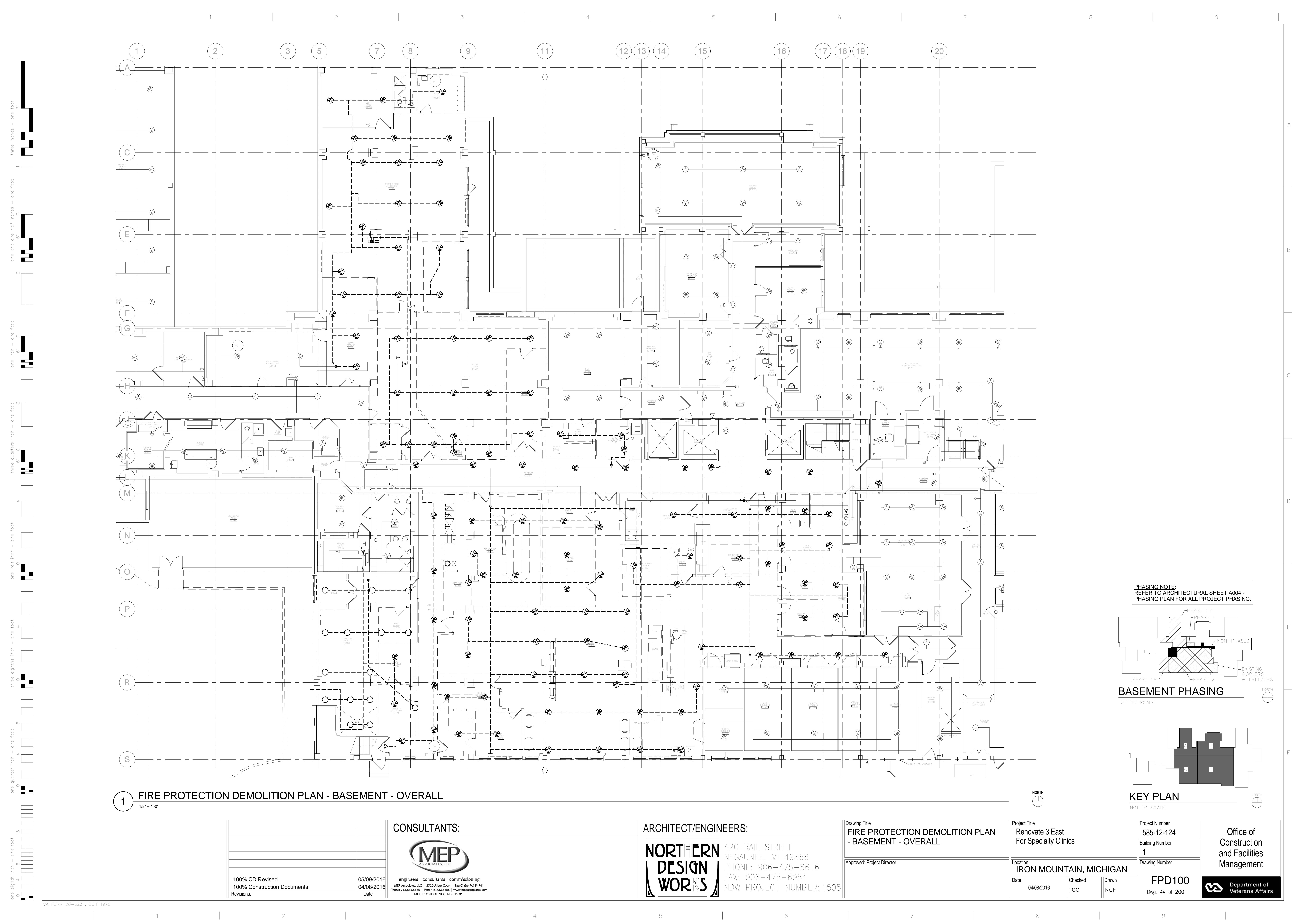
MEP ASSOCIATES, LLC

engineers | consultants | commissioning

MEP Associates, LLC | 2720 Arbor Court | Eau Claire, WI 54701
Phone: 715.832.5580 | Fax: 715.832.5568 | www.mepassociates.com
MEP PROJECT NO.: N08.15.01

NORTHERN DESIGN WORKS

420 RAIL STREET
NEGAUNEE, MI 49866
PHONE: 906-475-6616
FAX: 906-475-6954
NDW PROJECT NUMBER: 1505





1 FIRE PROTECTION DEMOLITION PLAN - BASEMENT - OVERALL
1/8" = 1'-0"

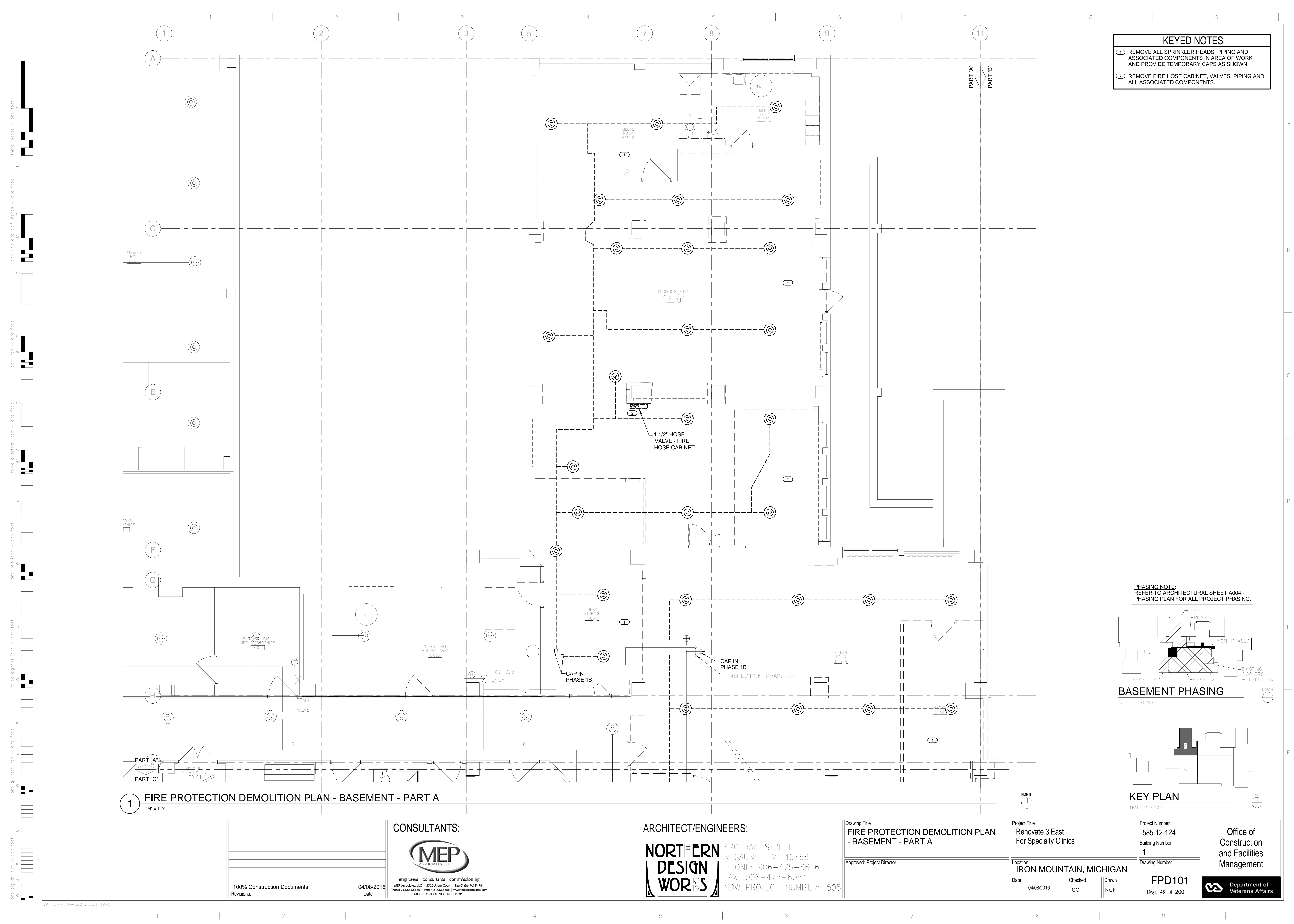
PHASING NOTE:
REFER TO ARCHITECTURAL SHEET A004 -
PHASING PLAN FOR ALL PROJECT PHASING.

PHASE 1A PHASE 1B PHASE 2
NON-PHASED
EXISTING COOLERS & FREEZERS

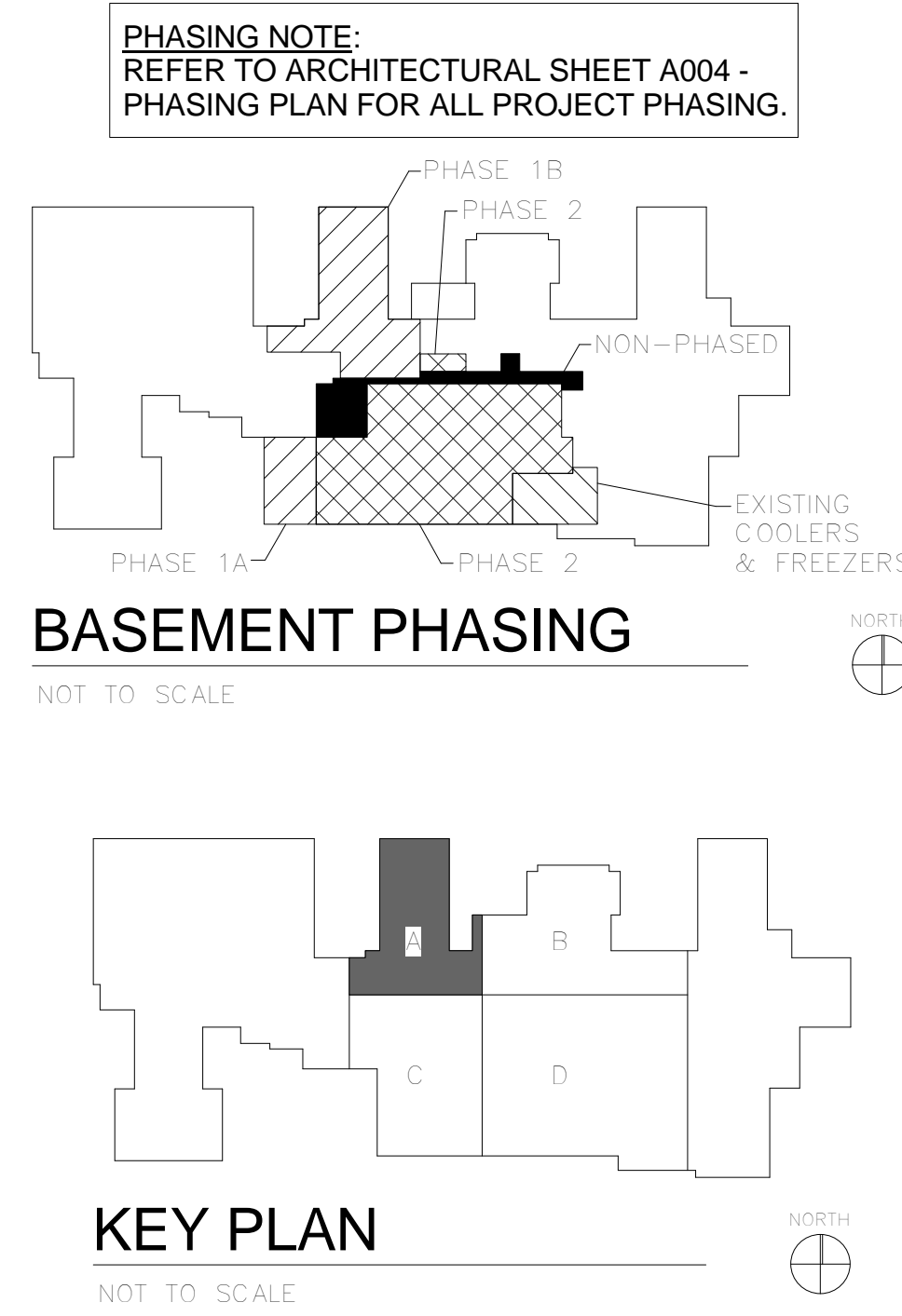
BASEMENT PHASING
NOT TO SCALE

KEY PLAN
NOT TO SCALE

				CONSULTANTS:		ARCHITECT/ENGINEERS:		Drawing Title		Project Title		Project Number		Office of Construction and Facilities Management	
				 engineers consultants commissioning MEP Associates, LLC 2730 Arbor Court Eau Claire, WI 54701 Phone: 715.832.5580 Fax: 715.832.5581 www.mepassociates.com MEP PROJECT NO.: N08.15.01		 420 RAIL STREET NEGAUNEE, MI 49866 PHONE: 906-475-6616 FAX: 906-475-6954 NDW PROJECT NUMBER: 1505		FIRE PROTECTION DEMOLITION PLAN - BASEMENT - OVERALL		Renovate 3 East For Specialty Clinics		585-12-124			
								Approved: Project Director		Location IRON MOUNTAIN, MICHIGAN		Building Number 1			
										Location IRON MOUNTAIN, MICHIGAN		Drawing Number			
										Date 04/08/2016		Checked TCC		Drawn NCF	
												FPD100		Department of Veterans Affairs	
												Dwg. 44 of 200			



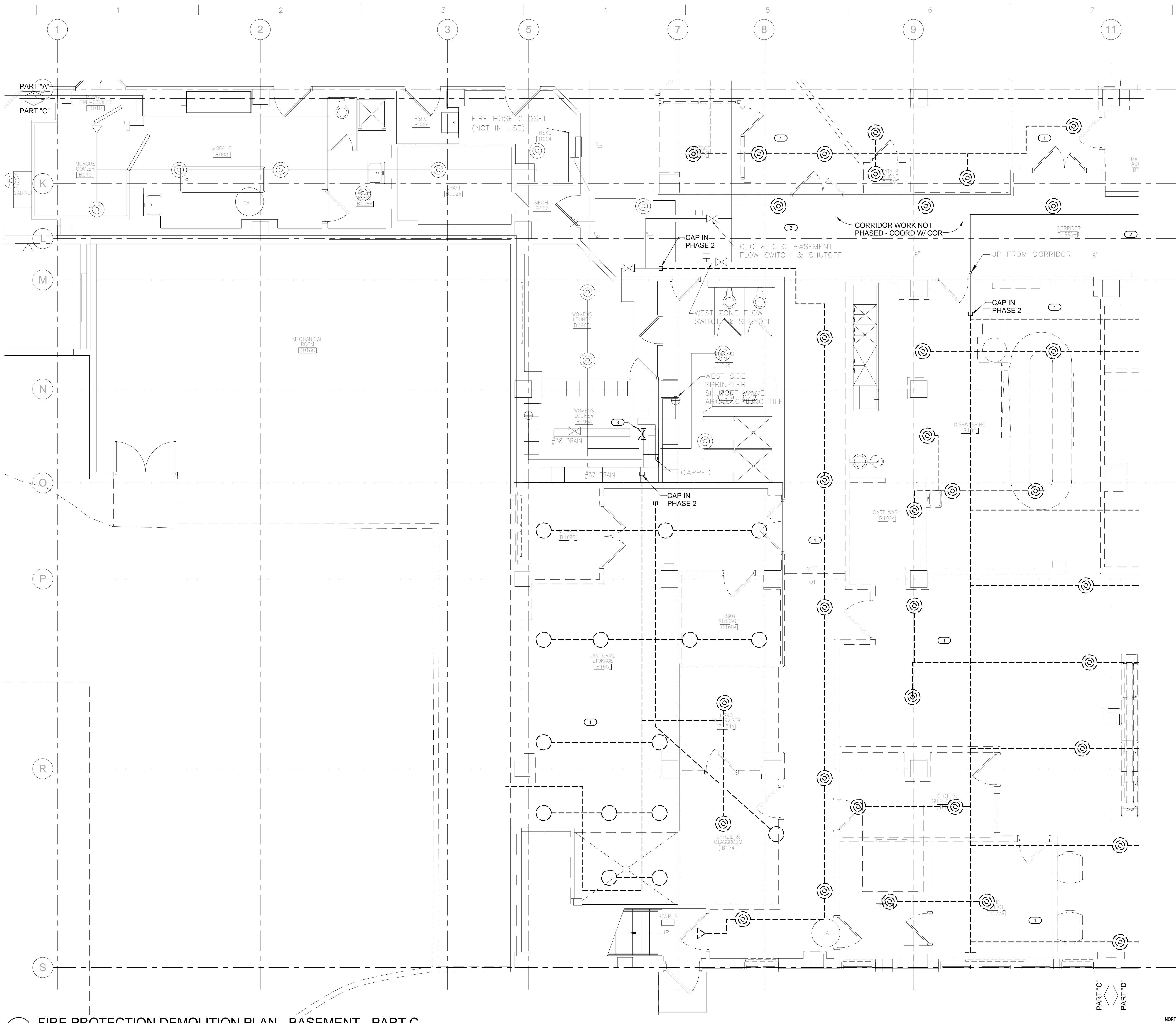
- KEYED NOTES
- REMOVE ALL SPRINKLER HEADS, PIPING AND ASSOCIATED COMPONENTS IN AREA OF WORK AND PROVIDE TEMPORARY CAPS AS SHOWN.
- REMOVE FIRE HOSE CABINET, VALVES, PIPING AND ALL ASSOCIATED COMPONENTS.



1 FIRE PROTECTION DEMOLITION PLAN - BASEMENT - PART A

1/4" = 1'-0"

																																																																																																																																																																																																																																																																																																																																																																																																																																																																																																																																																																																																																																																																																																																																																																																																																																																																																																																																																																																																																																																																																																																																																																																																																																																																																																																																																																																																										</	
--	--	--	--	--	--	--	--	--	--	--	--	--	--	--	--	--	--	--	--	--	--	--	--	--	--	--	--	--	--	--	--	--	--	--	--	--	--	--	--	--	--	--	--	--	--	--	--	--	--	--	--	--	--	--	--	--	--	--	--	--	--	--	--	--	--	--	--	--	--	--	--	--	--	--	--	--	--	--	--	--	--	--	--	--	--	--	--	--	--	--	--	--	--	--	--	--	--	--	--	--	--	--	--	--	--	--	--	--	--	--	--	--	--	--	--	--	--	--	--	--	--	--	--	--	--	--	--	--	--	--	--	--	--	--	--	--	--	--	--	--	--	--	--	--	--	--	--	--	--	--	--	--	--	--	--	--	--	--	--	--	--	--	--	--	--	--	--	--	--	--	--	--	--	--	--	--	--	--	--	--	--	--	--	--	--	--	--	--	--	--	--	--	--	--	--	--	--	--	--	--	--	--	--	--	--	--	--	--	--	--	--	--	--	--	--	--	--	--	--	--	--	--	--	--	--	--	--	--	--	--	--	--	--	--	--	--	--	--	--	--	--	--	--	--	--	--	--	--	--	--	--	--	--	--	--	--	--	--	--	--	--	--	--	--	--	--	--	--	--	--	--	--	--	--	--	--	--	--	--	--	--	--	--	--	--	--	--	--	--	--	--	--	--	--	--	--	--	--	--	--	--	--	--	--	--	--	--	--	--	--	--	--	--	--	--	--	--	--	--	--	--	--	--	--	--	--	--	--	--	--	--	--	--	--	--	--	--	--	--	--	--	--	--	--	--	--	--	--	--	--	--	--	--	--	--	--	--	--	--	--	--	--	--	--	--	--	--	--	--	--	--	--	--	--	--	--	--	--	--	--	--	--	--	--	--	--	--	--	--	--	--	--	--	--	--	--	--	--	--	--	--	--	--	--	--	--	--	--	--	--	--	--	--	--	--	--	--	--	--	--	--	--	--	--	--	--	--	--	--	--	--	--	--	--	--	--	--	--	--	--	--	--	--	--	--	--	--	--	--	--	--	--	--	--	--	--	--	--	--	--	--	--	--	--	--	--	--	--	--	--	--	--	--	--	--	--	--	--	--	--	--	--	--	--	--	--	--	--	--	--	--	--	--	--	--	--	--	--	--	--	--	--	--	--	--	--	--	--	--	--	--	--	--	--	--	--	--	--	--	--	--	--	--	--	--	--	--	--	--	--	--	--	--	--	--	--	--	--	--	--	--	--	--	--	--	--	--	--	--	--	--	--	--	--	--	--	--	--	--	--	--	--	--	--	--	--	--	--	--	--	--	--	--	--	--	--	--	--	--	--	--	--	--	--	--	--	--	--	--	--	--	--	--	--	--	--	--	--	--	--	--	--	--	--	--	--	--	--	--	--	--	--	--	--	--	--	--	--	--	--	--	--	--	--	--	--	--	--	--	--	--	--	--	--	--	--	--	--	--	--	--	--	--	--	--	--	--	--	--	--	--	--	--	--	--	--	--	--	--	--	--	--	--	--	--	--	--	--	--	--	--	--	--	--	--	--	--	--	--	--	--	--	--	--	--	--	--	--	--	--	--	--	--	--	--	--	--	--	--	--	--	--	--	--	--	--	--	--	--	--	--	--	--	--	--	--	--	--	--	--	--	--	--	--	--	--	--	--	--	--	--	--	--	--	--	--	--	--	--	--	--	--	--	--	--	--	--	--	--	--	--	--	--	--	--	--	--	--	--	--	--	--	--	--	--	--	--	--	--	--	--	--	--	--	--	--	--	--	--	--	--	--	--	--	--	--	--	--	--	--	--	--	--	--	--	--	--	--	--	--	--	--	--	--	--	--	--	--	--	--	--	--	--	--	--	--	--	--	--	--	--	--	--	--	--	--	--	--	--	--	--	--	--	--	--	--	--	--	--	--	--	--	--	--	--	--	--	--	--	--	--	--	--	--	--	--	--	--	--	--	--	--	--	--	--	--	--	--	--	--	--	--	--	--	--	--	--	--	--	--	--	--	--	--	--	--	--	--	--	--	--	--	--	--	--	--	--	--	--	--	--	--	--	--	--	--	--	--	--	--	--	--	--	--	--	--	--	--	--	--	--	--	--	--	--	--	--	--	--	--	--	--	--	--	--	--	--	--	--	--	--	--	--	--	--	--	--	--	--	--	--	--	--	--	--	--	--	--	--	--	--	--	--	--	--	--	--	--	--	--	--	--	--	--	--	--	--	--	--	--	--	--	--	--	--	--	--	--	--	--	--	--	--	--	--	--	--	--	--	--	--	--	--	--	--	--	--	--	--	--	--	--	--	--	--	--	--	--	--	--	--	--	--	--	--	--	--	--	--	--	--	--	--	--	--	--	--	--	--	--	--	--	--	--	--	--	--	--	--	--	--	--	--	--	--	--	--	--	--	--	--	--	--	--	--	--	--	--	--	--	--	--	--	--	--	--	--	--	--	--	--	--	--	--	--	--	--	--	--	--	--	--	--	--	--	--	--	--	--	--	--	--	--	--	--	--	--	--	--	--	--	--	--	--	--	--	--	--	--	--	--	--	--	--	--	--	--	--	--	--	--	--	--	--	--	--	--	--	--	--	--	--	--	--	--	--	--	--	--	--	--	--	--	--	--	--	--	--	--	--	--	--	--	--	--	--	--	--	--	--	--	--	--	--	--	--	--	--	--	--	--	--	--	--	--	--	--	--	--	--	--	--	--	--	--	--	--	--	--	--	--	--	--	--	--	--	--	--	--	--	--	--	--	--	--	--	--	--	--	--	--	--	--	--	--	--	--	--	--	--	--	--	--	--	--	--	--	--	--	--	--	--	--	--	--	--	--	--	--	--	--	--	--	--	--	--	--	--	--	--	--	--	--	--	--	--	--	--	--	--	--	--	--	--	--	--	--	--	--	--	--	--	--	--	--	--	--	--	--	--	--	--	--	--	--	--	--	--	--	--	--	--	--	--	--	--	--	--	--	--	--	--	--	--	--	--	--	--	--	--	--	--	--	--	--	--	--	--	--	--	--	--	--	--	--	--	--	--	--	--	--	--	--	--	--	--	--	--	--	--	--	--	--	----	--

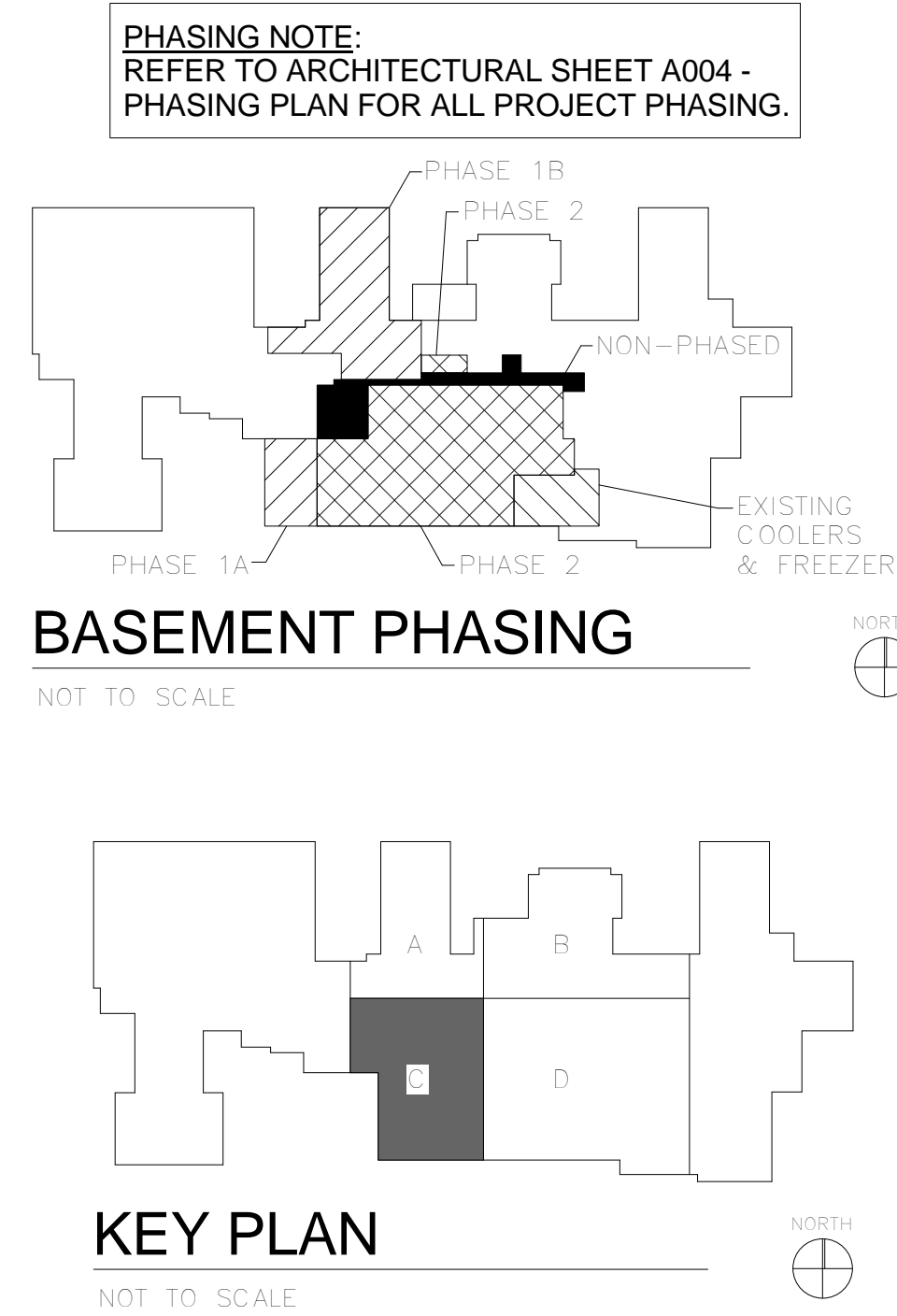


- KEYED NOTES
- 1

REMOVE ALL SPRINKLER HEADS, PIPING AND ASSOCIATED COMPONENTS IN AREA OF WORK AND PROVIDE TEMPORARY CAPS AS SHOWN.
- 2

REMOVAL OF EXISTING SPRINKLER HEADS IN CORRIDOR NOT PART OF PHASING PLAN. PIPING TO REMAIN FOR LIMITED DOWNTIME. COORDINATE SCHEDULING OF WORK WITH COR.
- 3




REMOVE 3" FIRE PROTECTION SHUTOFF VALVE AND REPLACE WITH SPOOL.

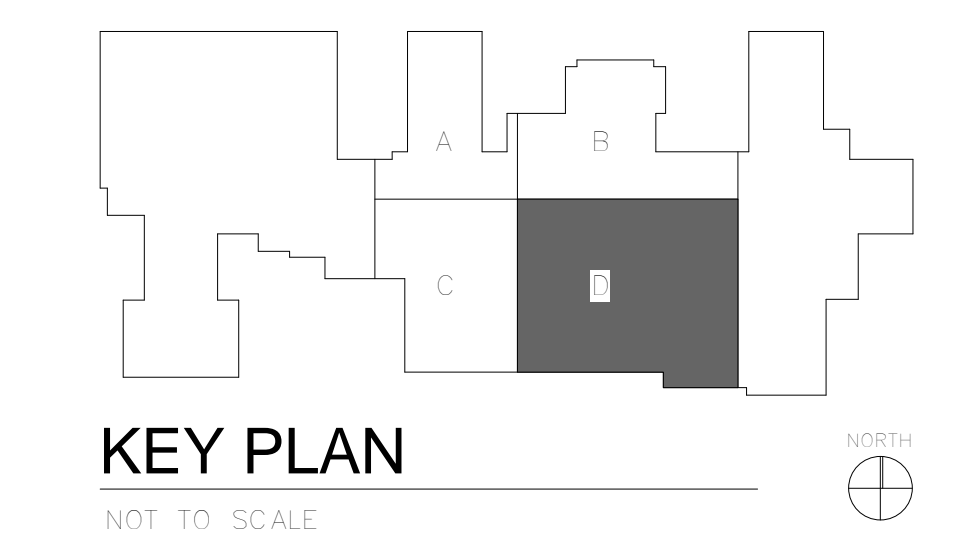
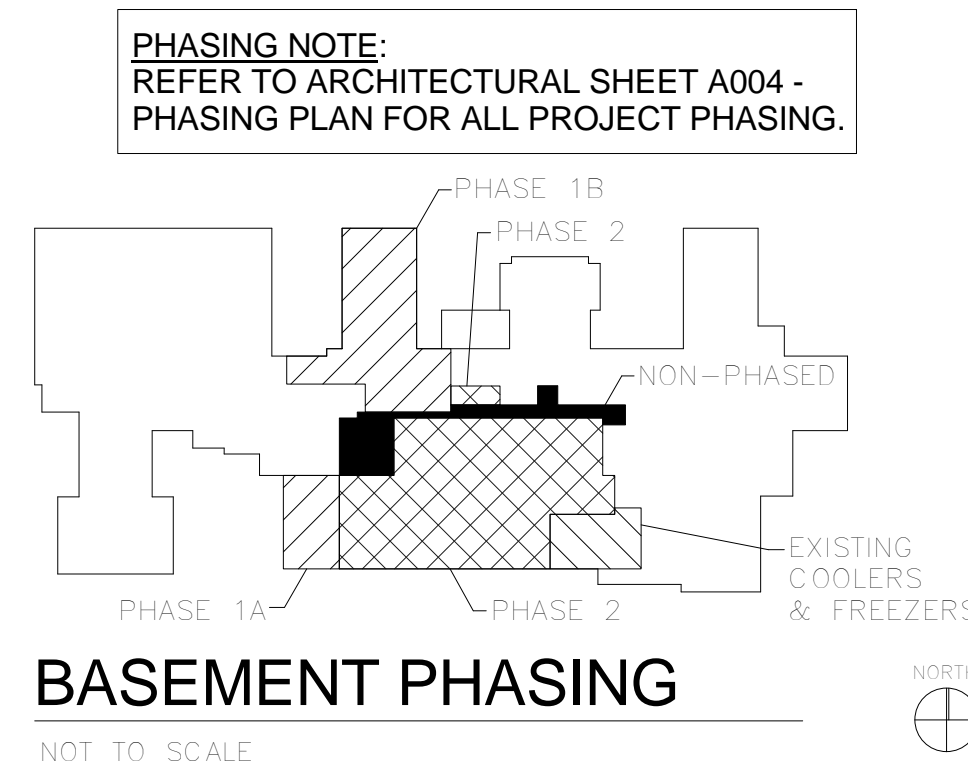
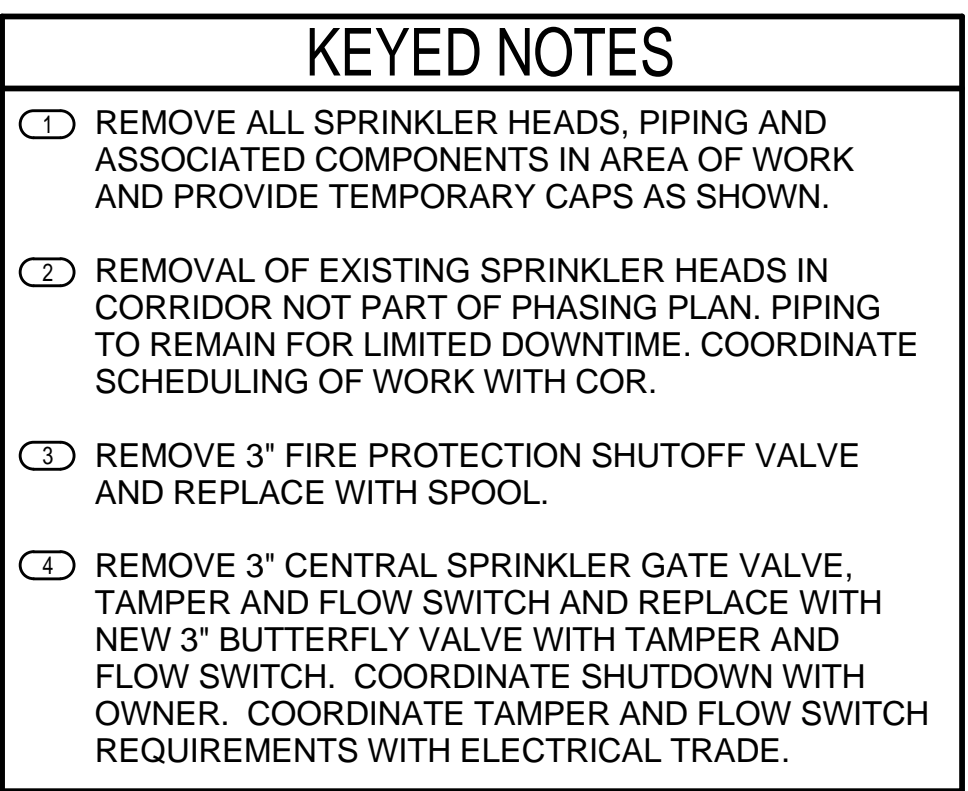


1

FIRE PROTECTION DEMOLITION PLAN - BASEMENT - PART C

1/4" = 1'-0"

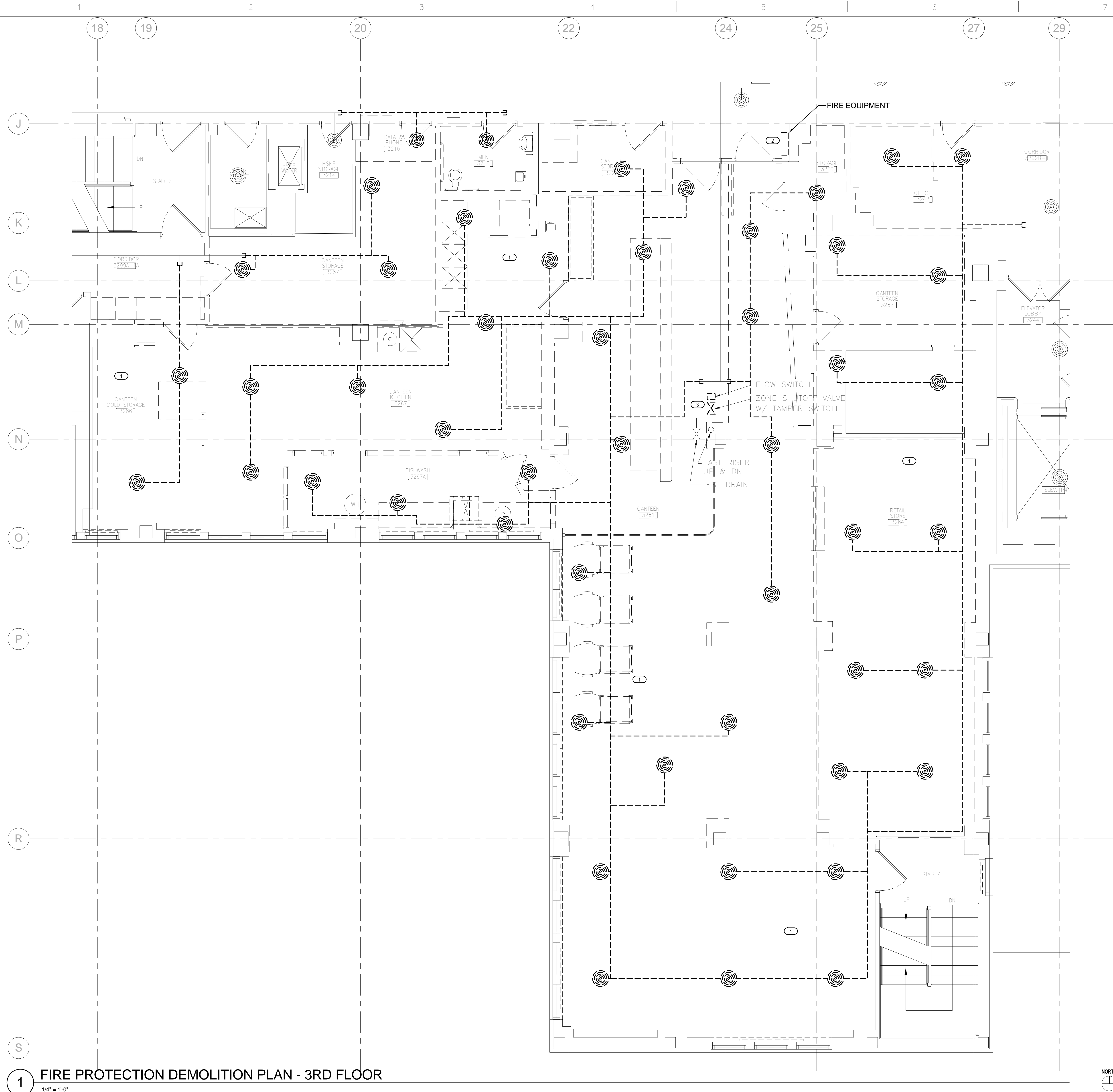
		CONSULTANTS:		ARCHITECT/ENGINEERS:		Drawing Title		Project Title		Project Number		Office of Construction and Facilities Management			
						FIRE PROTECTION DEMOLITION PLAN - BASEMENT - PART C		Renovate 3 East For Specialty Clinics		585-12-124					
		engineers consultants commissioning MEP Associates, LLC 2720 Arbor Court Eau Claire, WI 54701 Phone: 715.832.5580 Fax: 715.832.5568 www.mepassociates.com MEP PROJECT NO.: N08.15.01		420 RAIL STREET NEGAUNEE, MI 49866 PHONE: 906-475-6616 FAX: 906-475-6954 NDW PROJECT NUMBER: 1505		Approved: Project Director		Location IRON MOUNTAIN, MICHIGAN		Building Number 1					
100% CD Revised		05/09/2016						Date 04/08/2016		Checked TCC		Drawn NCF		FPD102	
100% Construction Documents		04/08/2016												Dwg. 46 of 200	
Revisions:		Date												 Department of Veterans Affairs	



1 FIRE PROTECTION DEMOLITION PLAN - BASEMENT - PART D
1/4" = 1'-0"

[illegible]

three inches = one foot
one and one half inches = one foot
one inch = one foot
three quarters inch = one foot
one half inch = one foot
three eighths inch = one foot
one quarter inch = one foot
one eighth inch = one foot

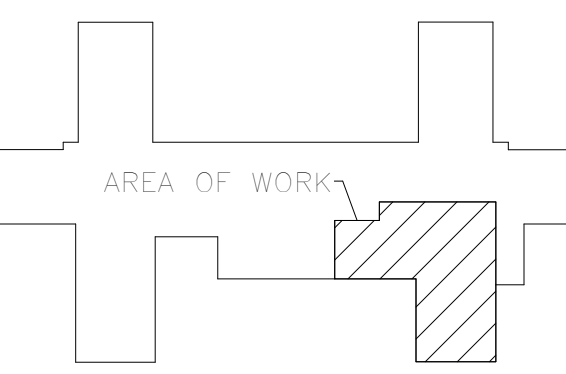


- KEYED NOTES**
- 1 REMOVE ALL SPRINKLER HEADS, PIPING AND ASSOCIATED COMPONENTS IN AREA OF WORK AND PROVIDE TEMPORARY CAPS AS SHOWN.
 - 2 REMOVE FIRE EQUIPMENT CABINET, SUPPLY, DRAIN PIPING AND ALL VALVES AND HOSE CONNECTIONS. COORDINATE DEMOLITION WITH OWNER. PIPING SHALL BE CAPPED IN SECOND AND THIRD FLOOR CEILING SPACE AND ABANDONED SERVING FLOORS ABOVE. CONTRACTOR SHALL LABEL FIRE PROTECTION HOSE CABINETS AS ABANDONED ON FLOORS ABOVE. VERIFY WITH OWNER PRIOR TO WORK. SEE PHOTO 2/FPD201.
 - 3 REMOVE FIRE PROTECTION MAIN VALVE AND FLOW SWITCH AND REPLACE WITH NEW BUTTERFLY VALVE WITH TAMPER AND FLOW SWITCH. COORDINATE SHUTDOWN WITH OWNER. COORDINATE TAMPER AND FLOW SWITCH REQUIREMENTS WITH ELECTRICAL TRADE.



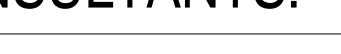

2 FIRE HOSE CLOSET


PHASING NOTE:
REFER TO ARCHITECTURAL SHEET A004 - PHASING PLAN FOR ALL PROJECT PHASING.

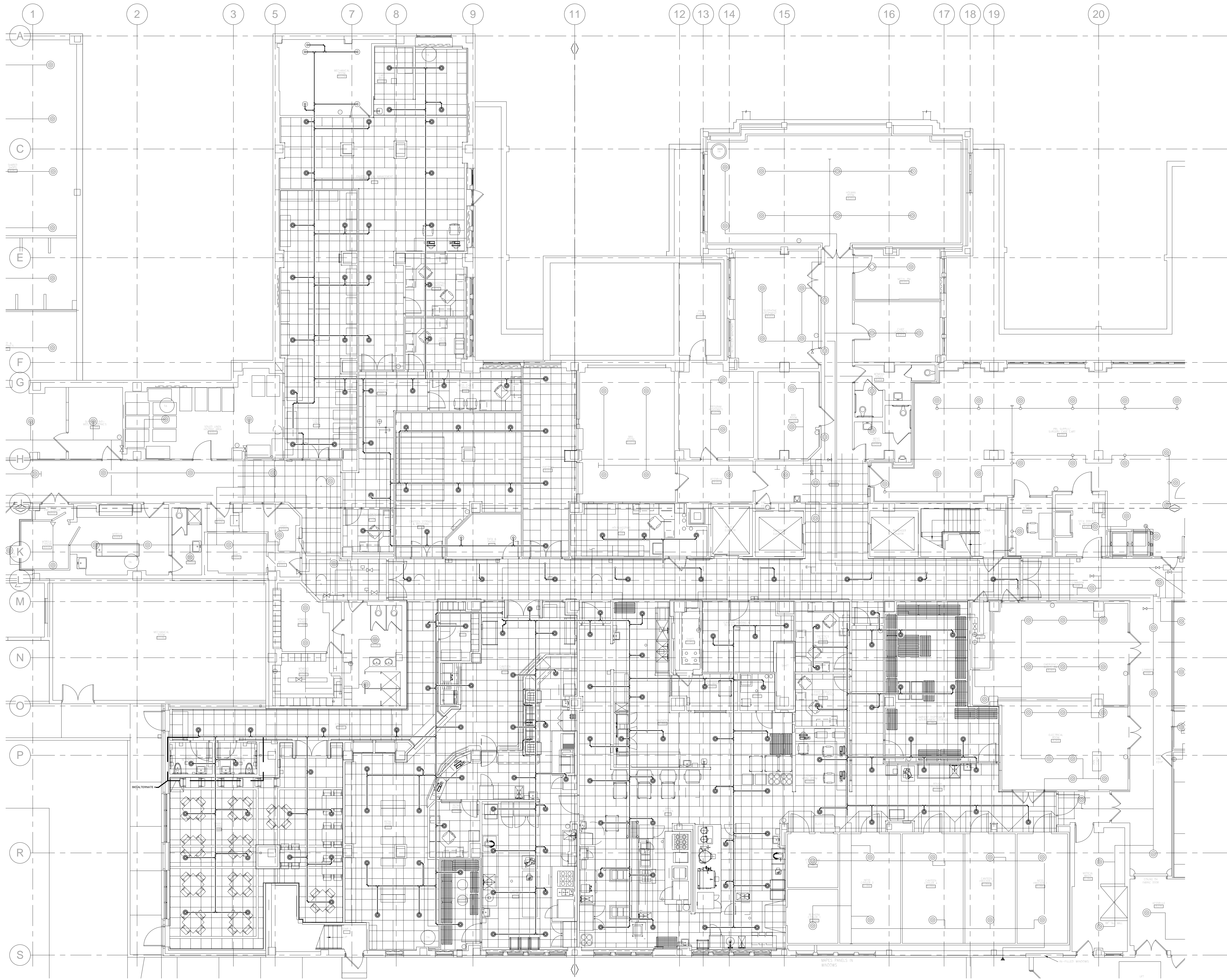


KEY PLAN
NOT TO SCALE

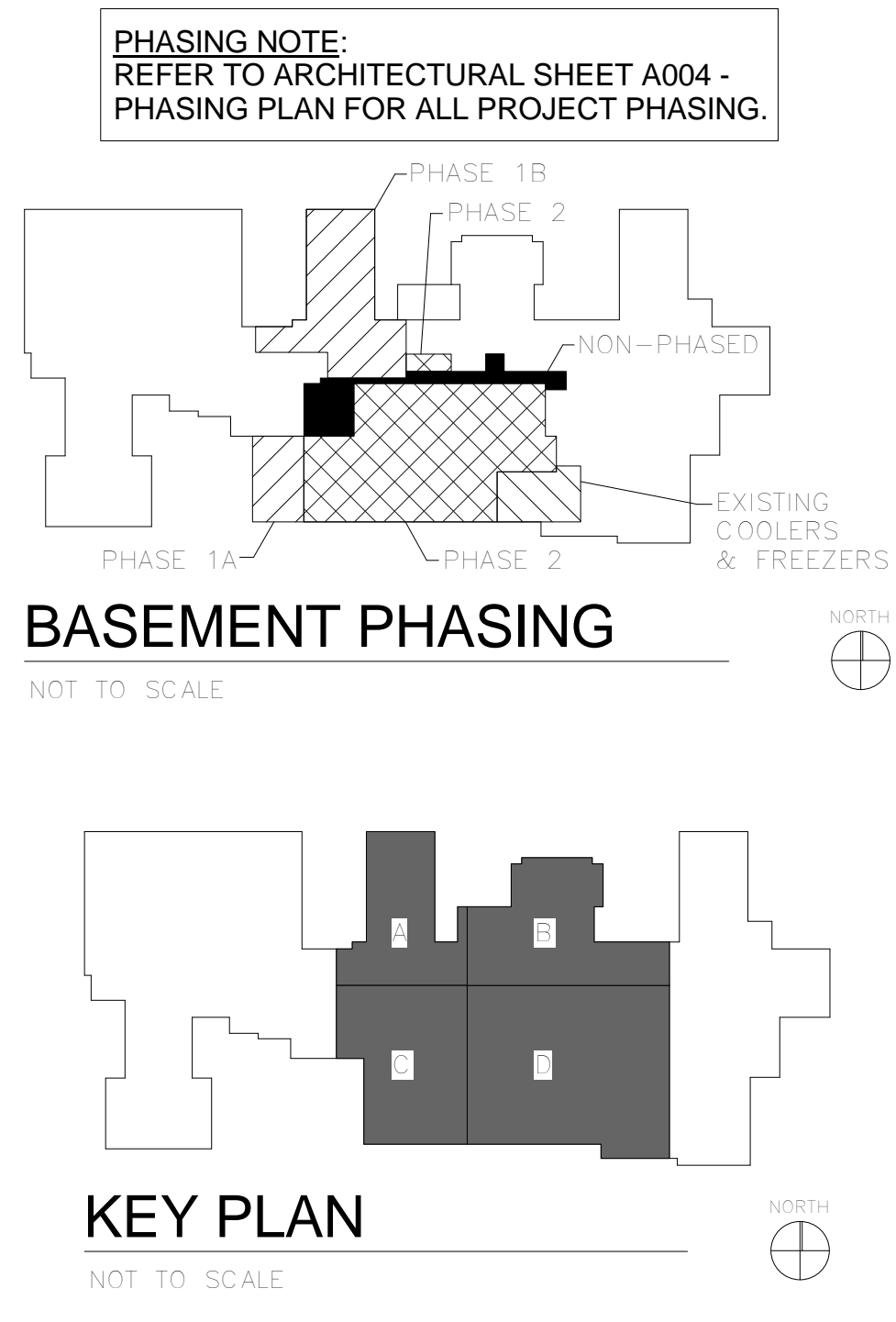
1 FIRE PROTECTION DEMOLITION PLAN - 3RD FLOOR
1/4" = 1'-0"

		CONSULTANTS:		ARCHITECT/ENGINEERS:		Drawing Title FIRE PROTECTION DEMOLITION PLAN - 3RD FLOOR		Project Title Renovate 3 East For Specialty Clinics		Project Number 585-12-124		Office of Construction and Facilities Management
						Approved: Project Director		Location IRON MOUNTAIN, MICHIGAN		Building Number 1		
		engineers consultants commissioning MEP Associates, LLC 2720 Arbor Court Eau Claire, WI 54601 Phone: 715-832-2560 Fax: 715-832-2568 www.mepassociates.com MEP PROJECT NO.: NOB.15.01		420 RAIL STREET NEGAUNEE, MI 49866 PHONE: 906-475-6616 FAX: 906-475-6954 NDW PROJECT NUMBER: 1505		Date 04/08/2016		Checked TCC		Drawn NCF		
		100% Construction Documents Revisions:		04/08/2016 Date						FPD201 Dwg. 48 of 200		

	Department of Veterans Affairs
---	---



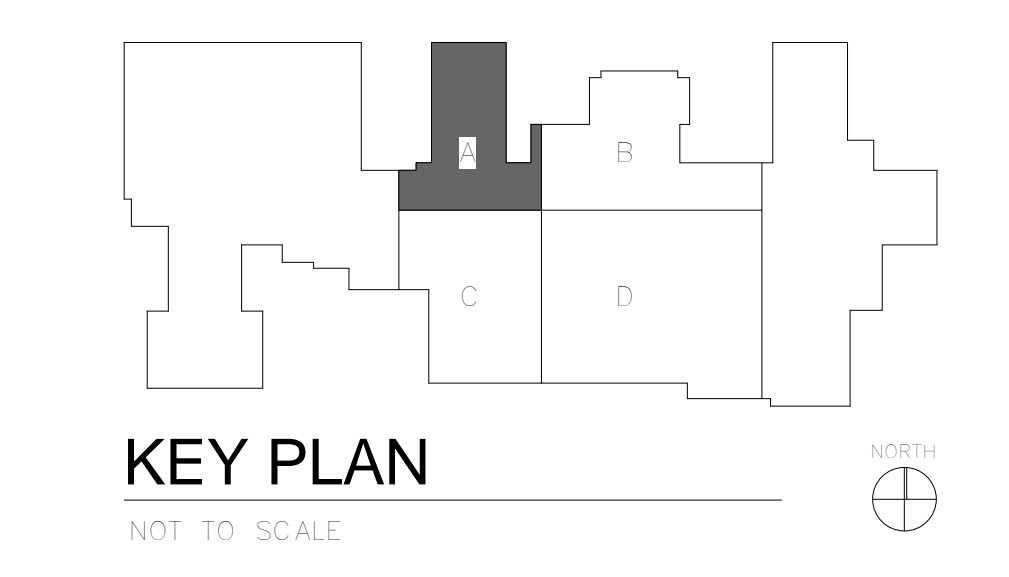
1 FIRE PROTECTION PLAN - BASEMENT - OVERALL
1/8" = 1'-0"



<div>100% CD Revised 100% Construction Documents Revisions:</div> <div>05/09/2016 04/08/2016 Date</div>			CONSULTANTS: <div></div> <div>engineers consultants commissioning MEP Associates, LLC 2720 Arbor Court Eau Claire, WI 54601 Phone: 715.832.5580 Fax: 715.832.5569 www.mepassociates.com MEP PROJECT NO.: N08.15.01</div>		ARCHITECT/ENGINEERS: <div></div> <div>420 RAIL STREET NEGAUNEE, MI 49866 PHONE: 906-475-6616 FAX: 906-475-6954 NDW PROJECT NUMBER: 1505</div>	<div>Drawing Title FIRE PROTECTION PLAN - BASEMENT - OVERALL</div> <div>Approved: Project Director</div>	<div>Project Title Renovate 3 East For Specialty Clinics</div> <div>Location IRON MOUNTAIN, MICHIGAN</div> <div>Date 04/08/2016</div> <div>Checked TCC</div> <div>Drawn NCF</div>	<div>Project Number 585-12-124</div> <div>Building Number 1</div> <div>Drawing Number FP100 Dwg. 49 of 200</div>	<div>Office of Construction and Facilities Management</div> <div> Department of Veterans Affairs</div>	
---	--	--	--	--	---	---	---	---	--	--



PHASING NOTE:
REFER TO ARCHITECTURAL SHEET A004 -
PHASING PLAN FOR ALL PROJECT PHASING.





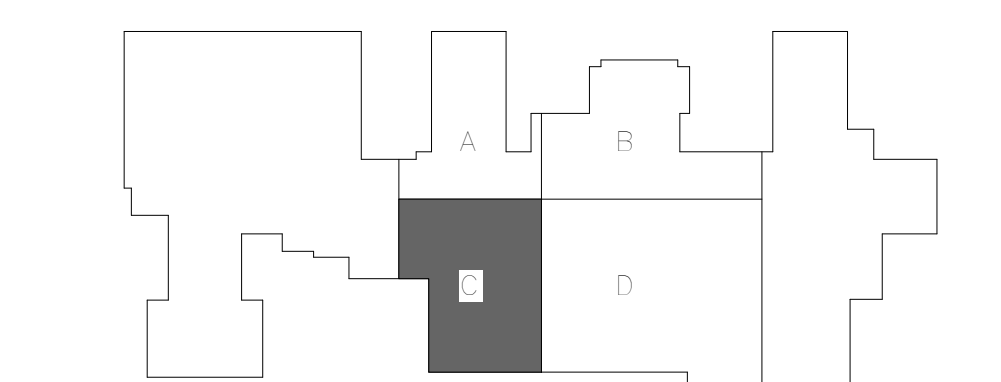
1 FIRE PROTECTION PLAN - BASEMENT - PART C
1/4" = 1'-0"

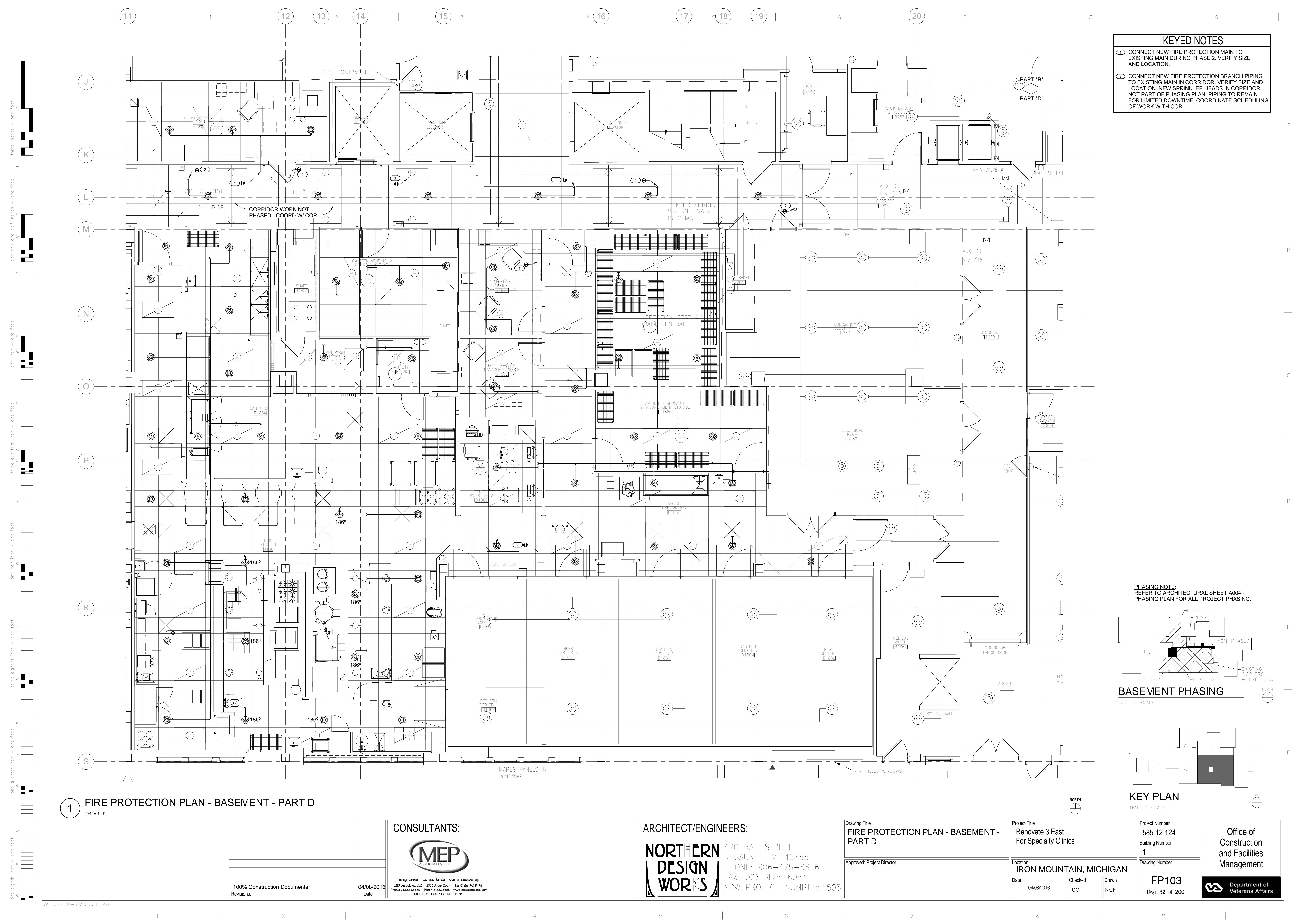


NORTHERN
DESIGN
WORKS

Department of
Veterans Affairs

- 1) CONNECT NEW FIRE PROTECTION MAIN TO EXISTING MAIN DURING PHASE 1A. VERIFY SIZE AND LOCATION.
- 2) CONNECT NEW FIRE PROTECTION BRANCH PIPING TO EXISTING MAIN IN CORRIDOR. NEW SPRINKLER HEADS IN CORRIDOR NOT PART OF PHASING PLAN. PIPING TO REMAIN FOR LIMITED DOWNTIME. COORDINATE SCHEDULING OF WORK WITH COR.
- 3) CONNECT NEW FIRE PROTECTION MAIN TO EXISTING MAIN DURING PHASE 2.
- 4) PROVIDE FIRE PROTECTION HEADS IN MENS RESTROOM B168 AND WOMENS RESTROOM B170 AS BASE BID. FOR BID ALTERNATE 4, PROVIDE FIRE PROTECTION HEADS AS REQUIRED FOR EXTENSION OF DINING ROOM TO CONSUME THIS AREA.
- 5) CONNECT NEW FIRE PROTECTION BRANCH PIPING SERVING NEW SPRINKLER HEADS IN PHASE 2 TO EXISTING FIRE PROTECTION MAIN INSTALLED IN PHASE 1A.
- 6) PROVIDE NEW FIRE PROTECTION MAIN FROM CENTER ZONE TO SERVE SPRINKLER HEADS IN PHASE 1A.
- 7) DURING PHASE 2, CONNECT NEW FIRE PROTECTION MAIN TO FIRE PROTECTION MAIN INSTALLED IN PHASE 1A. PROVIDE CAP FOR PHASE 2 CONNECTION DURING PHASE 1A.

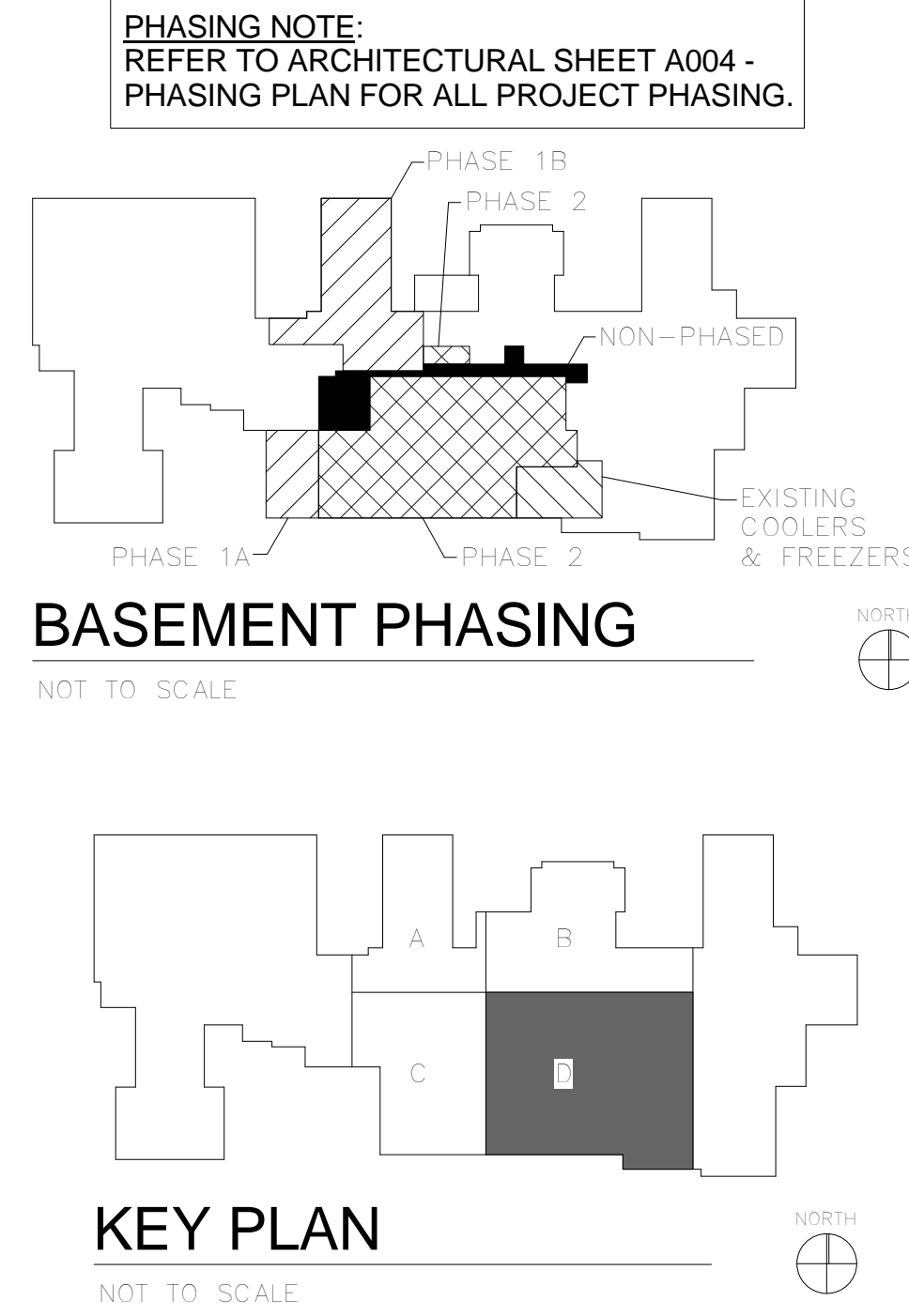




- KEYED NOTES
- 1

CONNECT NEW FIRE PROTECTION MAIN TO EXISTING MAIN DURING PHASE 2. VERIFY SIZE AND LOCATION.
- 2

CONNECT NEW FIRE PROTECTION BRANCH PIPING TO EXISTING MAIN IN CORRIDOR. VERIFY SIZE AND LOCATION. NEW SPRINKLER HEADS IN CORRIDOR NOT PART OF PHASING PLAN. PIPING TO REMAIN FOR LIMITED DOWNTIME. COORDINATE SCHEDULING OF WORK WITH COR.



1

FIRE PROTECTION PLAN - BASEMENT - PART D

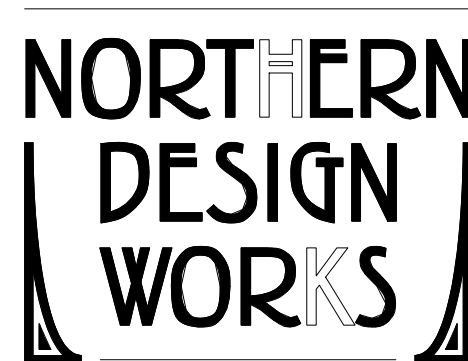
1/4" = 1'-0"

CONSULTANTS:



engineers | consultants | commissioning
MEP Associates, LLC | 2750 Arbor Court | Eau Claire, WI 54601
Phone: 715.832.5580 | Fax: 715.832.5581 | www.mepassociates.com
MEP PROJECT NO.: N08.15.01

ARCHITECT/ENGINEERS:



420 RAIL STREET
NEGAUNEE, MI 49866
PHONE: 906-475-6616
FAX: 906-475-6954
NDW PROJECT NUMBER: 1505

Drawing Title

FIRE PROTECTION PLAN - BASEMENT -
PART D

Approved: Project Director

Project Title

Renovate 3 East
For Specialty Clinics

Location

IRON MOUNTAIN, MICHIGAN

Date

04/08/2016

Checked

TCC

Drawn

NCF

Project Number

585-12-124

Building Number

1

Drawing Number

FP103

Dwg. 52 of 200

Office of
Construction
and Facilities
Management

