

BUILDING CODE SUMMARY:

- BUILDING CODES:
- VA FIRE PROTECTION DESIGN MANUAL
 - 2012 NFPA 101 LIFE SAFETY CODE

- OCCUPANCY CLASSIFICATION:
- HEALTHCARE

- CONSTRUCTION TYPE:
- TYPE II(000)

BUILDING FLOOR AREA:

- NEW CONSTRUCTION APPROXIMATELY: FIRST FLOOR- 11,768 GSF
BASEMENT - 1,384 GSF
PENTHOUSE- 884 GSF

FIRE RESISTIVE SEPARATION:

SEPARATION BETWEEN THE EXISTING BUILDING AND THE NEW HEALTHCARE OCCUPANCY IS REQUIRED. THE EXISTING EXTERIOR WALL MEETS THE REQUIREMENTS FOR A 2 HOUR FIRE RESISTIVE SEPARATION.

THE FLOOR IS REQUIRED TO BE SEPARATED INTO TWO SMOKE COMPARTMENTS. A 1 HOUR FIRE AND SMOKE RESISTIVE WALL WILL BE CONSTRUCTED.

HAZARDOUS AREAS ARE REQUIRED TO BE SEPARATED BY A 1 HOUR FIRE WALL. AREAS WILL BE SEPARATED AS SHOWN. THE IT ROOM IS REQUIRED TO BE SEPARATED BY A 2 HOUR FIRE WALL.

FIRE SPRINKLER SYSTEM: FULLY SPRINKLERED

FIRE ALARM SYSTEM:

A NEW FIRE ALARM CONTROL PANEL AND ASSOCIATED DEVICES WILL BE INSTALLED. THE NEW FIRE ALARM SYSTEM WILL BE NETWORKED TO THE EXISTING CAMPUS FIRE ALARM SYSTEM.

PORTABLE FIRE EXTINGUISHERS:

FIRE EXTINGUISHER CABINETS SHALL BE LOCATED AS REQUIRED BY NFPA 10.

MEANS OF EGRESS:

FOUR EXITS WILL BE PROVIDED.

MAXIMUM TRAVEL DISTANCE IS LIMITED TO 200 FEET. DEAD END CORRIDORS ARE LIMITED TO 30 FEET. COMMON PATH OF TRAVEL IS LIMITED TO 100 FEET.

OCCUPANT LOAD:

OCCUPANT LOAD FACTOR = 100 SF/PERSONS (MAIN CORRIDOR/BUSINESS AREAS)
= 15 SF/PERSONS (ASSEMBLY AREAS)
= 120 SF/PERSONS (SLEEPING AREAS)
CALCULATED OCCUPANT LOAD = 167 PEOPLE

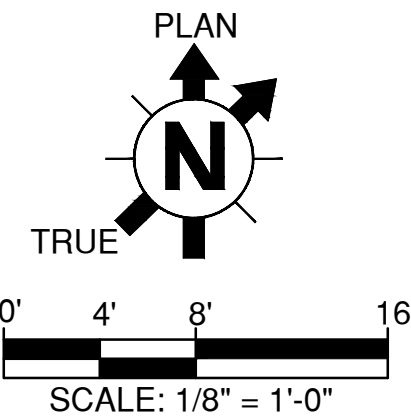
EXIT WIDTH CAPACITY:

NEW EXITS PROVIDE A CAPACITY FOR A TOTAL OF 1,070 PEOPLE


LIFE SAFETY LEGEND

- xx - PATH OF TRAVEL
- xx - INDICATES MAX DISTANCE
- FEC - FIRE EXTINGUISHER CABINET
- FEB - FIRE EXTINGUISHER BRACKET
- 1 - ONE HOUR FIRE RESISTIVE RATED WALL ASSEMBLY
- 2 - TWO HOUR FIRE RESISTIVE RATED WALL ASSEMBLY
- S - SMOKE BARRIER

ROOM SCHEDULE - FIRST FLOOR		ROOM SCHEDULE - FIRST FLOOR	
NAME	NUMBER	NAME	NUMBER
SOILED	C1-148	RESIDENT TLT	C1-179A
IT ROOM	C1-149	RESIDENT	C1-180
ELEC	C1-150	RESIDENT TLT	C1-180A
HOUSEKEEPING	C1-151	RESIDENT	C1-181
REHAB	C1-152	RESIDENT TLT	C1-181A
REHAB TLT	C1-152A	RESIDENT	C1-182
REHAB COMMON SPACE	C1-158	RESIDENT TLT	C1-182A
BARIATRIC	C1-163	RESIDENT COMMON SPACE	C1-183
BARIATRIC TLT	C1-163A	RESIDENT	C1-185
NURSE STATION	C1-164	RESIDENT TLT	C1-185A
NURSE OFFICE	C1-165	RESIDENT	C1-186
MEDS	C1-166	RESIDENT TLT	C1-186A
VISITOR TLT	C1-167	RESIDENT	C1-187
VISITOR TLT	C1-168	RESIDENT TLT	C1-187A
KITCHEN AND SERVERY	C1-169	RESIDENT	C1-188
MULTIPURPOSE/ACTIVITY	C1-170	RESIDENT TLT	C1-188A
STORAGE	C1-171	BARIATRIC	C1-189
KITCHEN STOR	C1-171A	BARIATRIC TLT	C1-189A
CLEAN UTILITY	C1-172	HOUSEKEEPING	C1-190
NURSE TLT	C1-173	CORRIDOR	C-002
BATHING ROOM	C1-174		
BATHING TLT	C1-174A		
NURSE STATION	C1-175		
RESIDENT	C1-176		
RESIDENT TLT	C1-176A		
RESIDENT	C1-177		
RESIDENT TLT	C1-177A		
RESIDENT	C1-178		
RESIDENT TLT	C1-178A		
RESIDENT	C1-179		

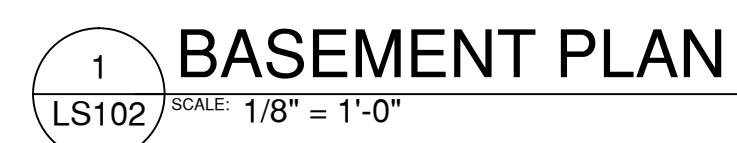


1 1ST FLOOR LIFE SAFETY PLAN
SCALE: 1/8" = 1'-0"

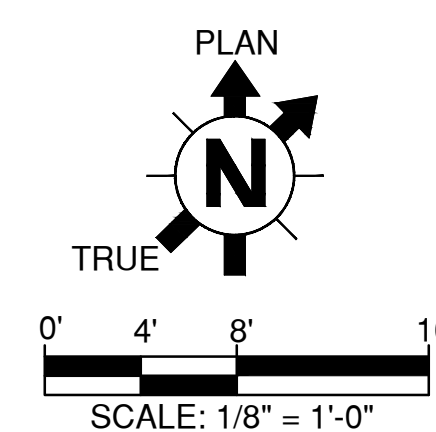
CONSULTANT:		CONSULTANT:		ARCHITECT/ENGINEERS:		Drawing Title 1ST FLOOR LIFE SAFETY PLAN AND BUILDING CODE SUMMARY		Project Title COMMUNITY LIVING CENTER		Project Number 442-12-357		Office of Construction and Facilities Management Department of Veterans Affairs
						Approved: Project Director SYLVIE RUPP - CFM DIRECTOR FACILITIES/ENGINEERING PHONE: 307-778-7550x7267 FAX: 307-287-9725		Location CHEYENNE, WYOMING		Building Number COWBOY		
ADDENDUM (CONSTRUCTION DOCUMENTS) Revisions: Date						Date MARCH 2016		Checked Drawn		Drawing Number LS101 Dwg. of		


NEW EXITS PROVIDE A CAPACITY FOR A TOTAL OF 1,070 PEOPLE

— — — — —	PATH OF TRAVEL
xx — — — — —	XX - INDICATES MAX DISTANCE
— [FEC] —	FIRE EXTINGUISHER CABINET
— (FEB) —	FIRE EXTINGUISHER BRACKET
— § —	ONE HOUR FIRE RESISTIVE
— §§ —	RATED WALL ASSEMBLY
— S —	TWO HOUR FIRE RESISTIVE
— S —	RATED WALL ASSEMBLY
— S —	SMOKE BARRIER



EXIT CAPACITY	
DOOR CW	42 IN
CAPACITY	210 PPL
ACTUAL	4 PPL



		CONSULTANT:		CONSULTANT:		ARCHITECT/ENGINEERS:	Drawing Title BASEMENT AND PENTHOUSE LIFE SAFETY PLAN AND BUILDING CODE SUMMARY	Project Title COMMUNITY LIVING CENTER	Project Number 442-12-357	Office of Construction and Facilities Management	
							Building Number COWBOY				
							Location CHEYENNE, WYOMING	Drawing Number LS102			
							Date MARCH 2016	Checked	Drawn		Dwg. of
							Approved: Project Director SYLVIE RUPP - CFM DIRECTOR FACILITIES/ENGINEERING PHONE: 307-778-7550x7267 FAX: 307-287-9725				
ADDENDUM (CONSTRUCTION DOCUMENTS)	MARCH 2016										
Revisions:	Date										
										 Department of Veterans Affairs	