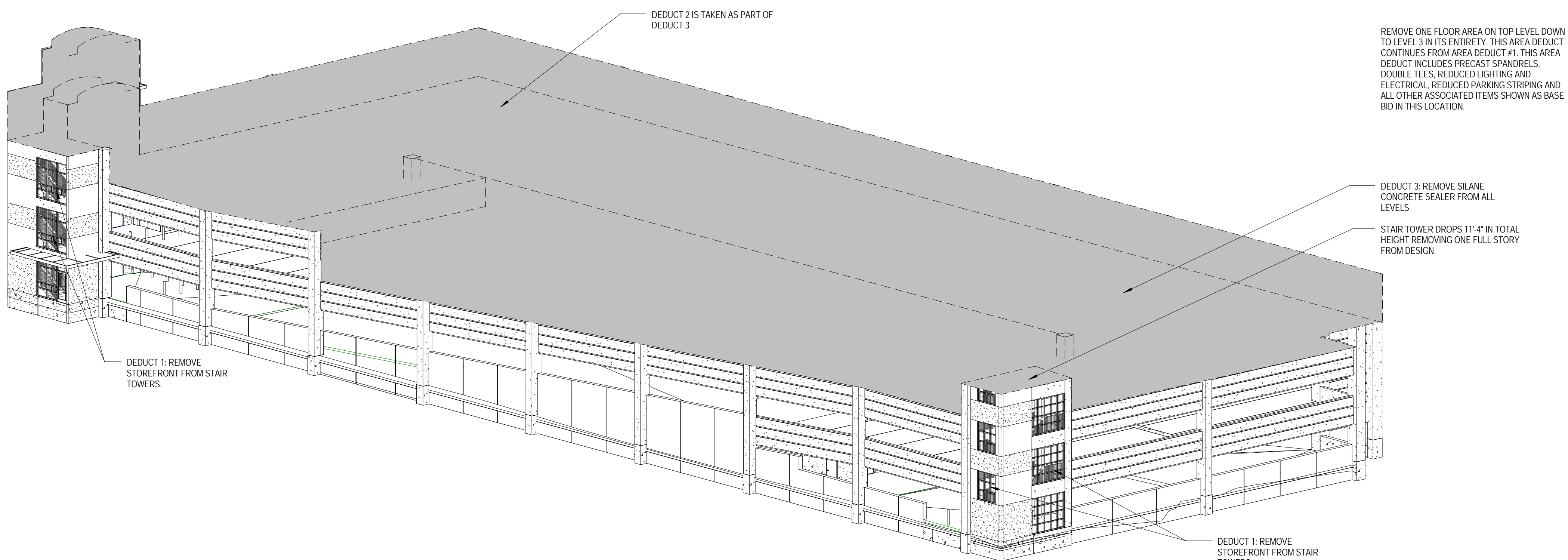
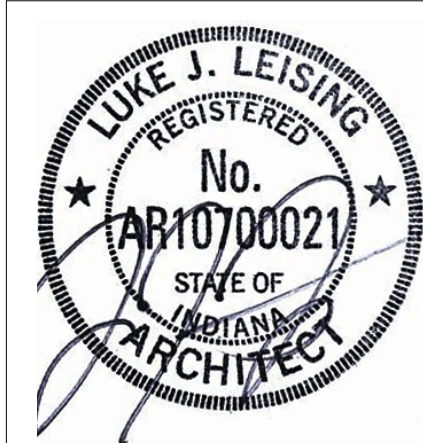




3 SOUTHWEST PERSPECTIVE
G1104 SCALE:



2 NORTH EAST PERSPECTIVE
G1104 SCALE:

[illegible]

| ARCHITECT/ENGINEERS: | | | | |
|---|---|--|--|---|
| PROJECT LEAD Architect, Structural Engineer  | Mech & Plumb Engineer APGEC CONSULTING GROUP, PA 1151 Kidders Farm Road, Suite 120 Cary, NC 27511 T: 919.658.7420 | Elect Engineer CMTA CONSULTING ENGINEERS 1610 Woodstead Court, Suite 105 Woodlands, TX 77380 T: 281.419.9899 | Civil Engineer H2B Inc., 1225 North Loop Suite 200 Houston, TX 77008 T: 713.864.2000 | Functional Design CARL WALKER INC. 2801 Network Blvd., Suite 101 Frisco, TX 75034 T: 469.777.5143 |
| 905 N. CAPITAL AVE. SUITE 104 INDIANAPOLIS, IN 46204 317.800.6388 | | | | |

| | | | | | |
|---|--|-------------------|------------------------------------|--|--|
| 100% CONSTRUCTION DOCUMENTS | | | | | |
| Drawing Title DEDUCT ALTERNATE ISOMETRICS | Project Title BUILD PARKING GARAGE A | | Guidon Design Project # 14.1037 | OFFICE OF FACILITIES MANAGEMENT | |
| | | | Building Number 123 | | |
| Approved for Design Concept: FACILITY MANAGEMENT DIVISION MANAGER | Location Michael E. DeBakey VAMC, Houston, TX | | Drawing Number | VA Project Number 580-321 | |
| | Date 2015/10/16 | Checked By: UJ | Drawn By: ARO | GI104 <div>VAU.S. Department of Veterans Affairs</div> | |