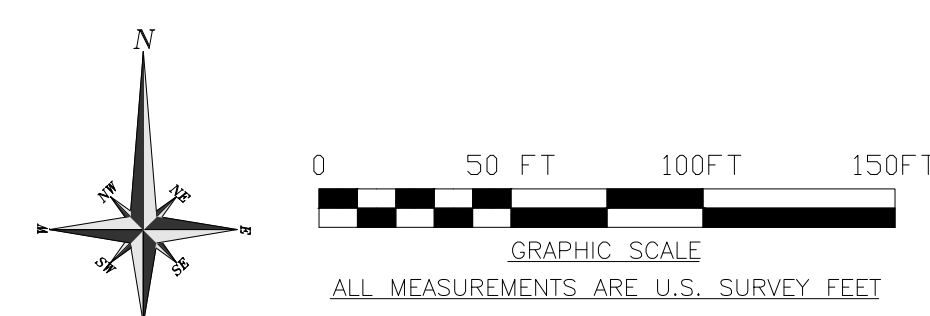
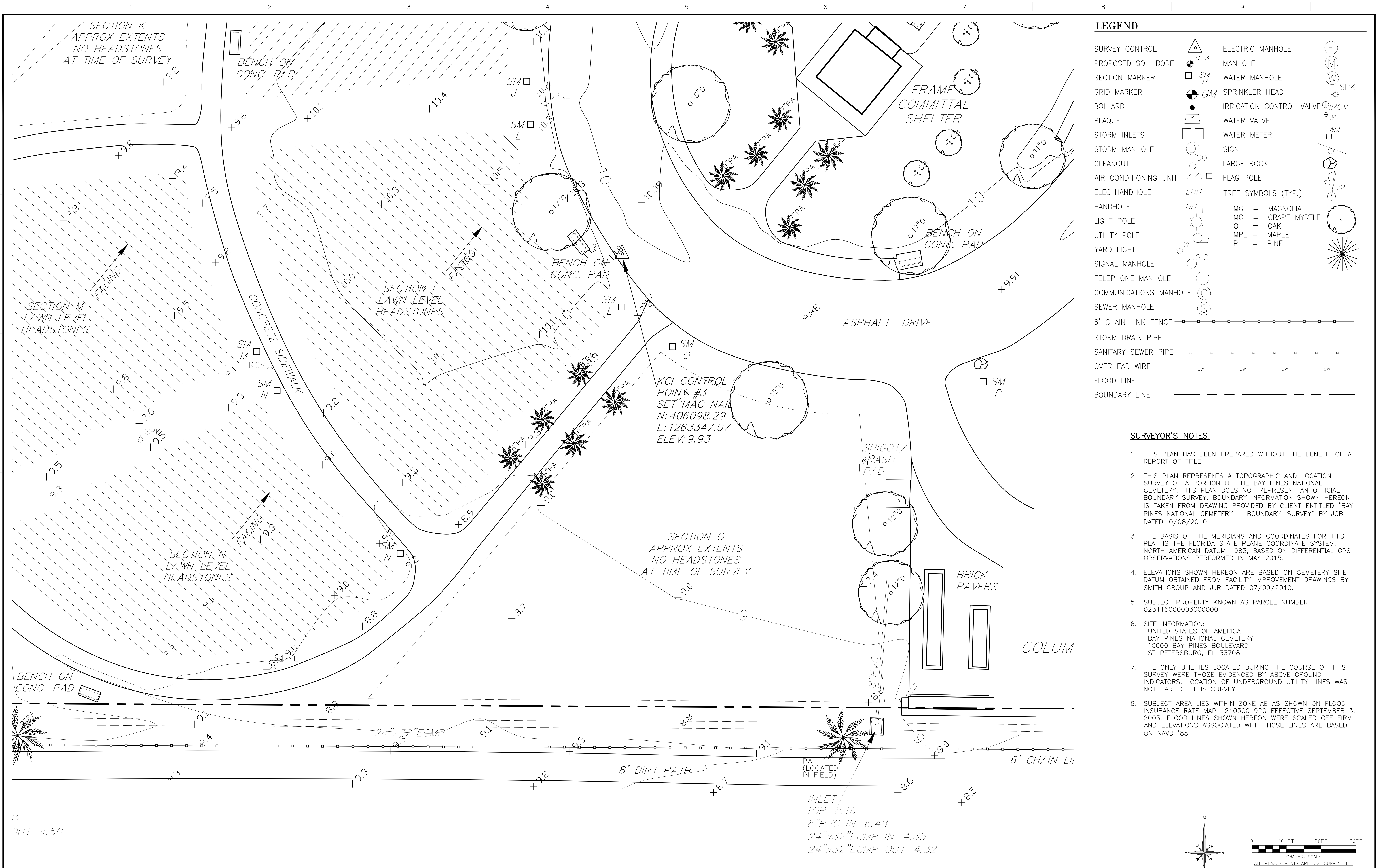


LEGEND			
SURVEY CONTROL		ELECTRIC MANHOLE	
PROPOSED SOIL BORE		MANHOLE	
SECTION MARKER		WATER MANHOLE	
GRID MARKER		SPRINKLER HEAD	
BOLLARD		IRRIGATION CONTROL VALVE	
PLAQUE		WATER VALVE	
STORM INLETS		WATER METER	
STORM MANHOLE		SIGN	
CLEANOUT		LARGE ROCK	
AIR CONDITIONING UNIT		FLAG POLE	
ELEC. HANDHOLE		TREE SYMBOLS (TYP.)	
HANDHOLE		MG = MAGNOLIA	
LIGHT POLE		MC = CRAPE MYRTLE	
UTILITY POLE		O = OAK	
YARD LIGHT		MPL = MAPLE	
SIGNAL MANHOLE		P = PINE	
TELEPHONE MANHOLE			
COMMUNICATIONS MANHOLE			
SEWER MANHOLE			
6" CHAIN LINK FENCE			
STORM DRAIN PIPE			
SANITARY SEWER PIPE			
OVERHEAD WIRE			
FLOOD LINE			
BOUNDARY LINE			

- SURVEYOR'S NOTES:**
- THIS PLAN HAS BEEN PREPARED WITHOUT THE BENEFIT OF A REPORT OF TITLE.
 - THIS PLAN REPRESENTS A TOPOGRAPHIC AND LOCATION SURVEY OF A PORTION OF THE BAY PINES NATIONAL CEMETERY. THIS PLAN DOES NOT REPRESENT AN OFFICIAL BOUNDARY SURVEY. BOUNDARY INFORMATION SHOWN HEREON IS TAKEN FROM DRAWING PROVIDED BY CLIENT ENTITLED "BAY PINES NATIONAL CEMETERY - BOUNDARY SURVEY" BY JCB DATED 10/08/2010.
 - THE BASIS OF THE MERIDIANS AND COORDINATES FOR THIS PLAT IS THE FLORIDA STATE PLANE COORDINATE SYSTEM, NORTH AMERICAN DATUM 1983, BASED ON DIFFERENTIAL GPS OBSERVATIONS PERFORMED IN MAY 2015.
 - ELEVATIONS SHOWN HEREON ARE BASED ON CEMETERY SITE DATUM OBTAINED FROM FACILITY IMPROVEMENT DRAWINGS BY SMITH GROUP AND JJR DATED 07/09/2010.
 - SUBJECT PROPERTY KNOWN AS PARCEL NUMBER: 023115000003000000
 - SITE INFORMATION:
UNITED STATES OF AMERICA
BAY PINES NATIONAL CEMETERY
10000 BAY PINES BOULEVARD
ST PETERSBURG, FL 33708
 - THE ONLY UTILITIES LOCATED DURING THE COURSE OF THIS SURVEY WERE THOSE EVIDENCED BY ABOVE GROUND INDICATORS. LOCATION OF UNDERGROUND UTILITY LINES WAS NOT PART OF THIS SURVEY.
 - SUBJECT AREA LIES WITHIN ZONE AE AS SHOWN ON FLOOD INSURANCE RATE MAP 12103C0192G EFFECTIVE SEPTEMBER 3, 2003. FLOOD LINES SHOWN HEREON WERE SCALED OFF FIRM AND ELEVATIONS ASSOCIATED WITH THOSE LINES ARE BASED ON NAVD '88.



CONSULTANTS:		ARCHITECT/ENGINEERS:		Drawing Title		Project Title		Project Number		NATIONAL CEMETERY	
				EXISTING CONDITIONS PLAN		Bay Pines National Cemetery 4,145 Niche Columbarium		830CM3016		ADMINISTRATION	
				Approved Project Director		Location 10000 Bay Pines Boulevard St. Petersburg, FL 33708		Building Number		OFFICE OF DESIGN	
						Date FEBRUARY 29, 2016		Drawing Number		AND CONSTRUCTION	
						Checked PW/MM		B-10			
						Drawn AW		Dwg. 2 of 23			



Revisions

Date

CONSULTANTS:

KCI TECHNOLOGIES

Executive Planner
Schematic Construction Manager
936 RIDGEWAY ROAD
SPARKS, MD 21152
PHONE: 410.334.7000
FAX: 410.334.7001
WWW.KCI.COM

Aqua Engineering Inc.

Water Solutions
895 E. Haverhill Road, Building 2-202
Fort Collins, CO 80526-3198
970.226.0900 office
970.226.3600 fax
www.aquaengineering.com

ARCHITECT/ENGINEERS:

M·T·R

LANDSCAPE ARCHITECTS
101 Bellevue Road Pittsburgh, PA 15229 (412) 931-6455

Drawing Title

EXISTING CONDITIONS
PLAN - DETAIL

Approved Project Director

Project Title

Bay Pines National Cemetery
4,145 Niche Columbarium

Location
10000 Bay Pines Boulevard St. Petersburg, FL 33708

Date
FEBRUARY 29, 2016

Checked
PW/MM

Drawn
AW

Project Number

830CM3016

Building Number

-

Drawing Number

B-11

Dwg. 3 of 23

NATIONAL CEMETERY
ADMINISTRATION
OFFICE OF DESIGN
AND CONSTRUCTION

Department of
Veterans Affairs

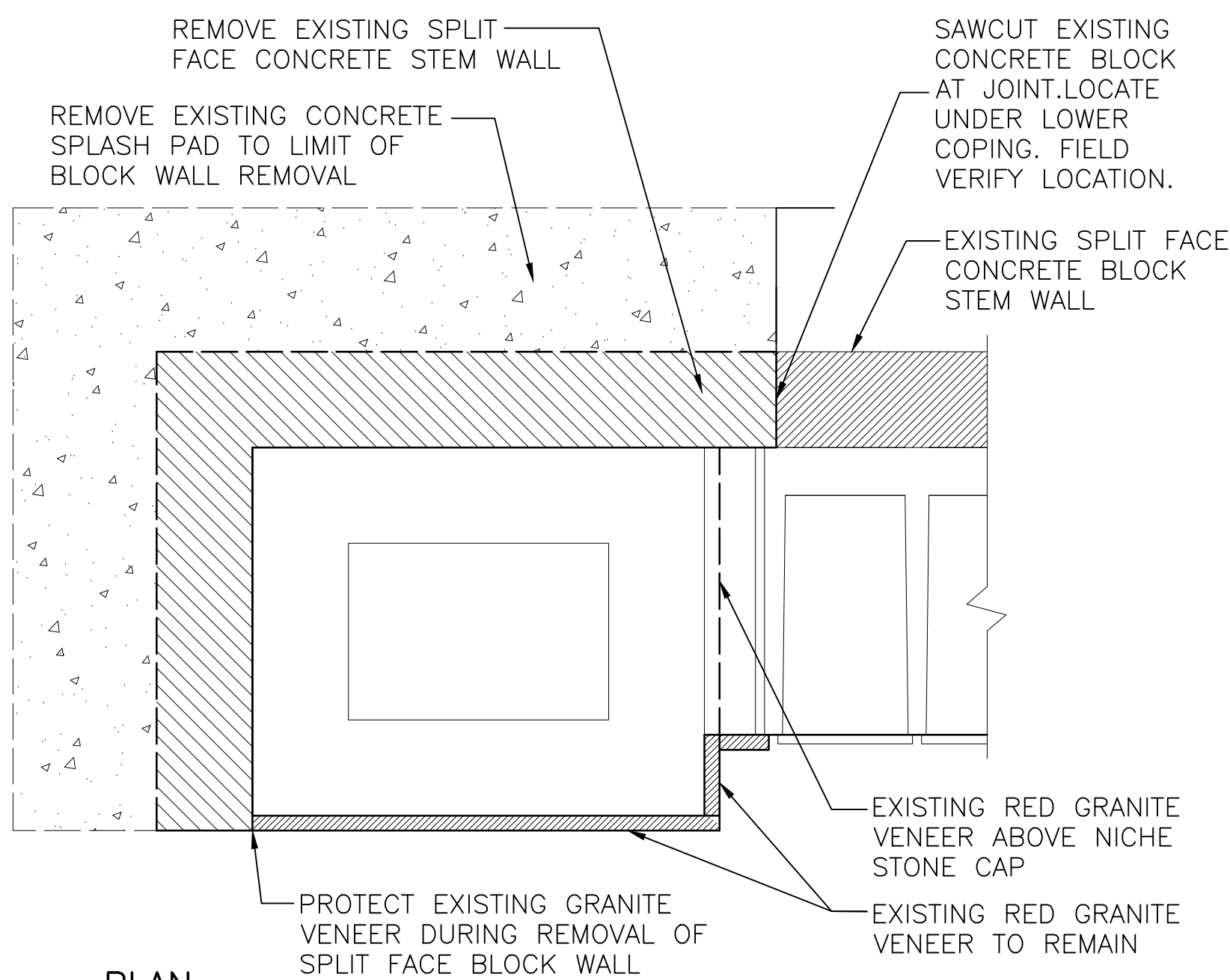
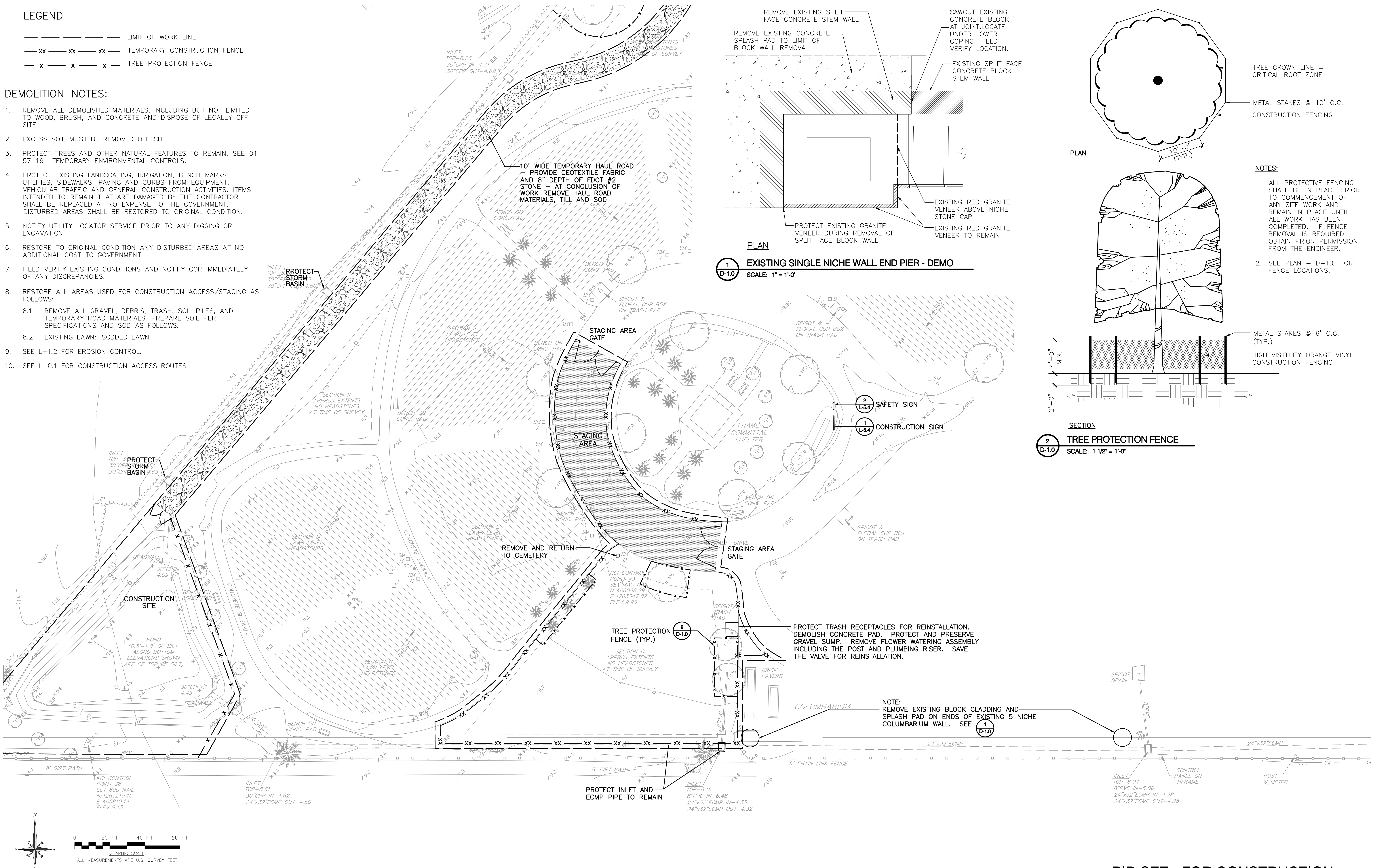
C:\Users\awkins\AppData\Local\Temp\Awkins_7140\B-11.0_Existing Conditions Plan.dwg 2-29-16 11:35:58 AM awkins

LEGEND

- — — — — LIMIT OF WORK LINE
— xx — xx — xx — TEMPORARY CONSTRUCTION FENCE
— x — x — x — TREE PROTECTION FENCE

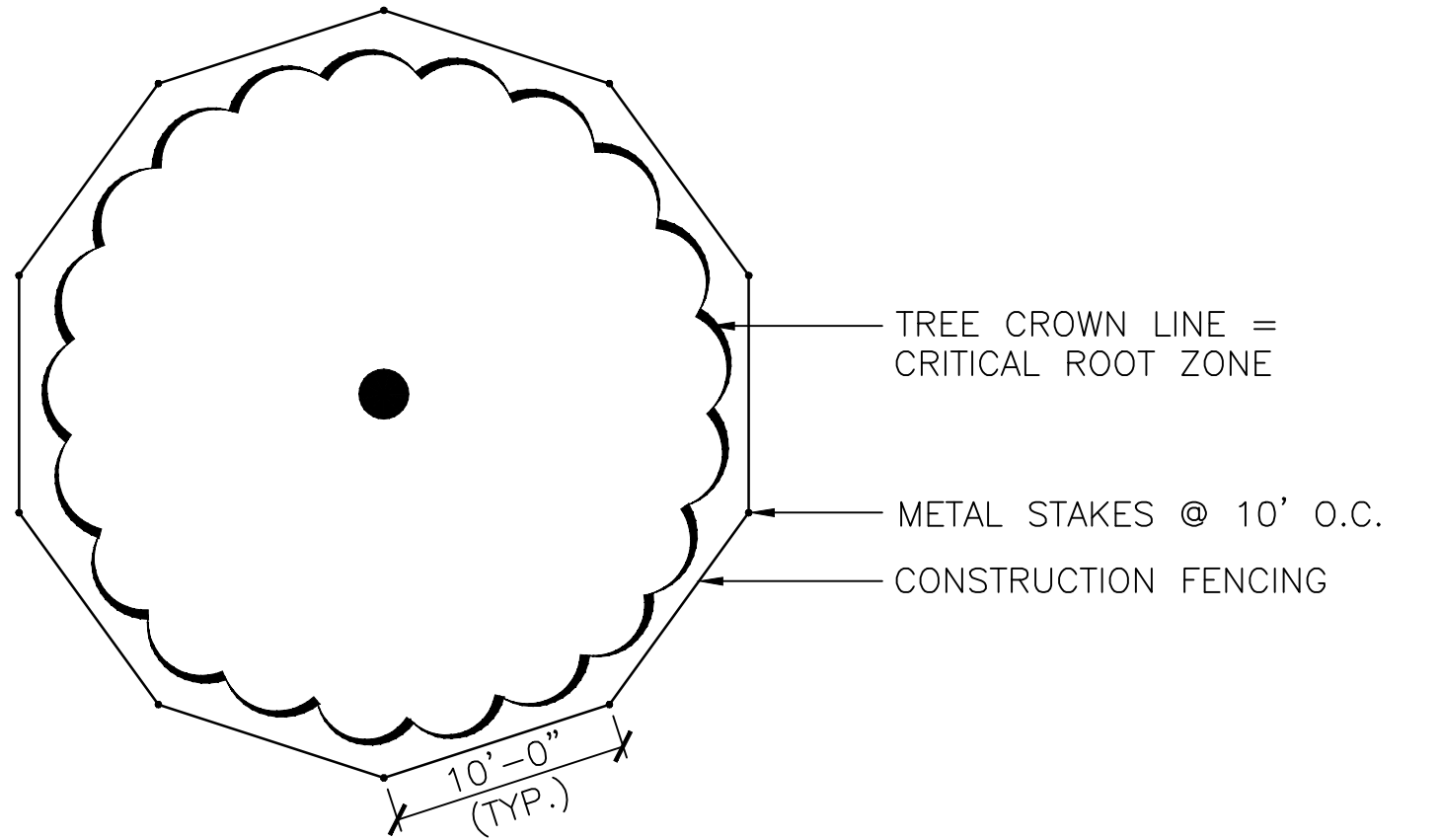
DEMOLITION NOTES:

1. REMOVE ALL DEMOLISHED MATERIALS, INCLUDING BUT NOT LIMITED TO WOOD, BRUSH, AND CONCRETE AND DISPOSE OF LEGALLY OFF SITE.
2. EXCESS SOIL MUST BE REMOVED OFF SITE.
3. PROTECT TREES AND OTHER NATURAL FEATURES TO REMAIN. SEE 01 57 19 TEMPORARY ENVIRONMENTAL CONTROLS.
4. PROTECT EXISTING LANDSCAPING, IRRIGATION, BENCH MARKS, UTILITIES, SIDEWALKS, PAVING AND CURBS FROM EQUIPMENT, VEHICULAR TRAFFIC AND GENERAL CONSTRUCTION ACTIVITIES. ITEMS INTENDED TO REMAIN THAT ARE DAMAGED BY THE CONTRACTOR SHALL BE REPLACED AT NO EXPENSE TO THE GOVERNMENT. DISTURBED AREAS SHALL BE RESTORED TO ORIGINAL CONDITION.
5. NOTIFY UTILITY LOCATOR SERVICE PRIOR TO ANY DIGGING OR EXCAVATION.
6. RESTORE TO ORIGINAL CONDITION ANY DISTURBED AREAS AT NO ADDITIONAL COST TO GOVERNMENT.
7. FIELD VERIFY EXISTING CONDITIONS AND NOTIFY COR IMMEDIATELY OF ANY DISCREPANCIES.
8. RESTORE ALL AREAS USED FOR CONSTRUCTION ACCESS/STAGING AS FOLLOWS:
 - 8.1. REMOVE ALL GRAVEL, DEBRIS, TRASH, SOIL PILES, AND TEMPORARY ROAD MATERIALS. PREPARE SOIL PER SPECIFICATIONS AND SOD AS FOLLOWS:
 - 8.2. EXISTING LAWN: SODDED LAWN.
9. SEE L-1.2 FOR EROSION CONTROL.
10. SEE L-0.1 FOR CONSTRUCTION ACCESS ROUTES

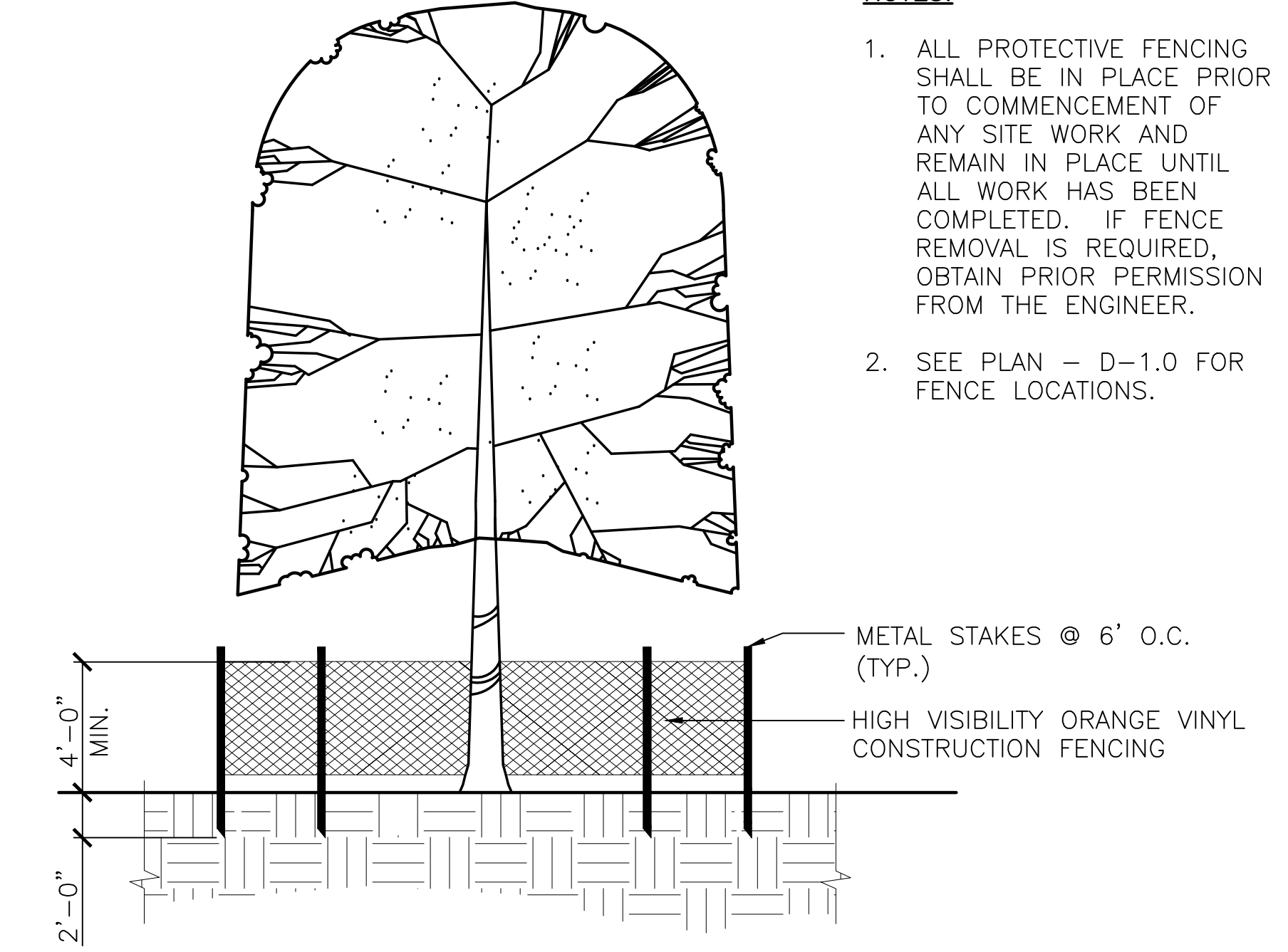


PLAN

1 EXISTING SINGLE NICHE WALL END PIER - DEMO
SCALE: 1" = 1'-0"



PLAN

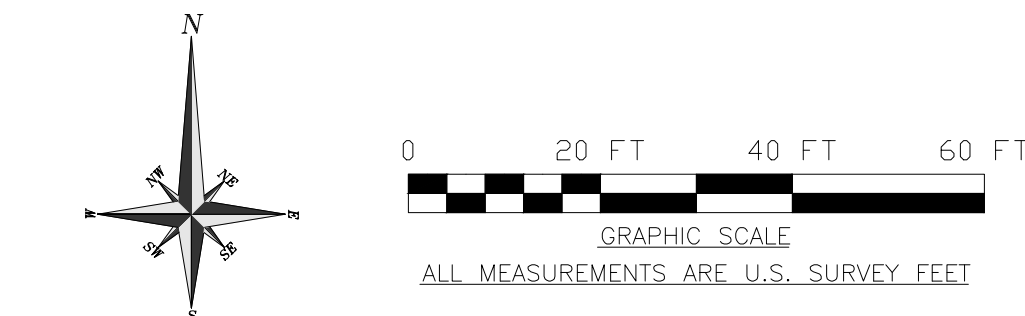


SECTION

2 TREE PROTECTION FENCE
SCALE: 1 1/2" = 1'-0"

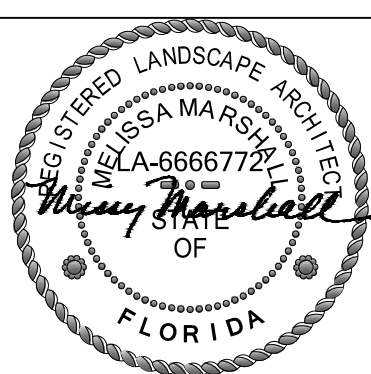
NOTES:

1. ALL PROTECTIVE FENCING SHALL BE IN PLACE PRIOR TO COMMENCEMENT OF ANY SITE WORK AND REMAIN IN PLACE UNTIL ALL WORK HAS BEEN COMPLETED. IF FENCE REMOVAL IS REQUIRED, OBTAIN PRIOR PERMISSION FROM THE ENGINEER.
2. SEE PLAN - D-1.0 FOR FENCE LOCATIONS.



Revisions	Date

CONSULTANTS:



ARCHITECT/ENGINEERS:



Drawing Title	DEMOLITION PLAN
Approved Project Director	

Project Title	Bay Pines National Cemetery 4,145 Niche Columbarium
Location	10000 Bay Pines Boulevard St. Petersburg, FL 33708
Date	FEBRUARY 29, 2016
Checked	PW/MM
Drawn	AW

Project Number	830CM3016
Building Number	-
Drawing Number	D-10
Dwg. 4 of 23	

