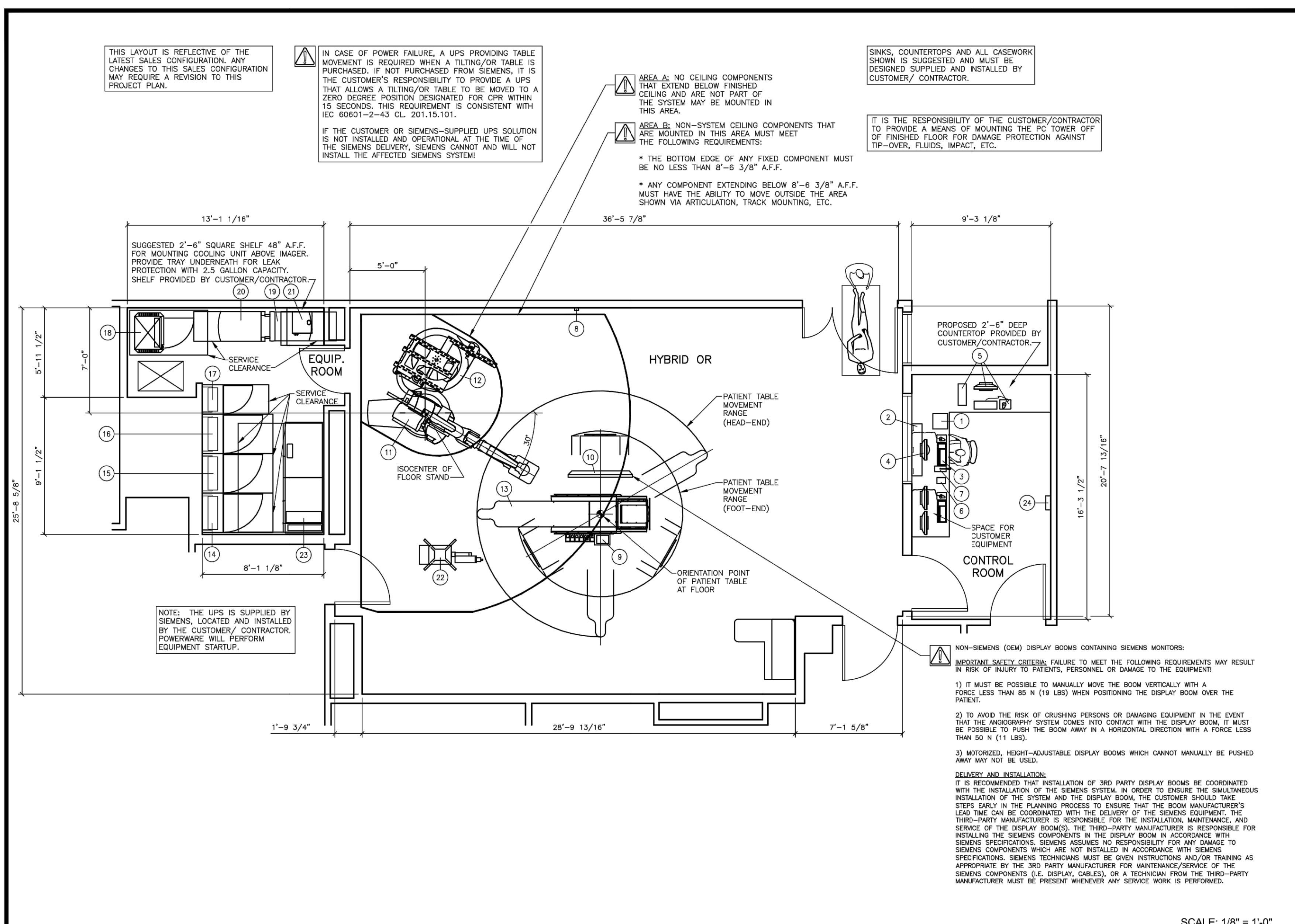


one inch = one foot  
one half inch = one foot  
three quarters inch = one foot  
one eighth inch = one foot  
one quarter inch = one foot  
three eighths inch = one foot  
one eighth inch = one foot



PROJECT MANAGER: ANTHONY GIACOBBE  
 PHONE: (609) 752-1628  
 EMAIL: ANTHONY.GIACOBBE@SIEMENS.COM

VA MEDICAL CENTER  
 UNIVERSITY AVE & WOODLAND AVE, PHILADELPHIA, PA 19104

HYBRID OR / ARTIS ZEEGO  
 REFERENCE DOCUMENT - NOT FOR CONSTRUCTION

SCALE: 1/8" = 1'-0"

**SIEMENS**  
 1504475

SHEET OF 2 2  
 DATE: 11/17/15  
 DRAWN BY: M. YATZUS  
 REF: 30189324

### EQUIPMENT LEGEND

NO	DESCRIPTION	SMS SYM	WEIGHT (LBS)	BTU/HR TO AIR	DIMENSIONS (INCHES)			REMARKS
					W	D	H	
1	ACE (ARCHIVE CONTROL EXTENSION)	⊖	13	N/A	12 1/4	11 3/4	4	MTD. ON CONTROL COUNTER
2	CONTROL ROOM DISTRIBUTOR	⊖	64	342	41 1/2	8 1/4	18 1/8	MTD. ON WALL
3	KEYBOARD	⊖	2.2	342	17 1/2	6 1/8	2 1/8	MTD. UNDER COUNTER OR ON CONSOLE
4	19" MONOCHROME LIVE DISPLAY	⊖	15	256	16 1/2	8 1/4	13 1/2	ON COUNTER OR CONSOLE
5	SYNGO X WORKSTATION TOWER, KEYBOARD, MONITOR	⊖	27	---	6 5/8	17 1/8	17 5/8	LOCATED BY CUSTOMER UNDER COUNTER
6	INTERCOM POWER UNIT	⊖	---	---	6 3/4	5	1 3/8	ON COUNTER
7	INTERCOM MICROPHONE/LOUDSPEAKER (CONTROL ROOM)	⊖	---	---	4 1/2	9	2	ON COUNTER
8	INTERCOM LOUDSPEAKER (PROCEDURE ROOM)	⊖	---	---	3 1/4	2	6	WALL MOUNTED
9	TABLE CONTROL MODULES	⊖	20.2	---	35 3/8	8 3/4	3 1/2	ON TABLE OR TROLLEY
10	LARGE DISPLAY (60") - BOOM 1 (MONITOR ONLY)	⊖	132	1,706	54 3/4	5 3/4	31 1/2	OEM BOOM MOUNTED
11	ARTIS ZEEGO FLOOR STAND W/ MOUNTING PLATE	⊖	3,997	1,706	---	---	---	ROBOT FLOOR MOUNTED
12	FLOOR STAND CABLE REEL	⊖	268	---	71	71	10 1/8	CEILING SUSPENDED
13	PATIENT TABLE (O.R.)	⊖	1,169	683	---	---	---	TABLE FLOOR MOUNTED
14	POLYDOROS A100 GENERATOR CABINET	⊖	723	4,094	31 1/2	17 1/8	87	FLOOR MOUNTED
15	CABLE CABINET	⊖	265	---	31 1/2	17 1/8	87	FLOOR MOUNTED
16	SYSTEM CONTROL CABINET	⊖	677	5,460	31 1/2	17 1/8	87	FLOOR MOUNTED
17	SYSTEM CONTROL CABINET (O.R. TABLE ONLY)	⊖	276	682	23 1/2	17 1/8	87	FLOOR MOUNTED
18	ARTIS ZEEGO FLOOR STAND CONTROL CABINET	⊖	368	5,118	31 3/4	20 1/2	53 1/4	FLOOR MOUNTED
19	LARGE DISPLAY CONTAINER FOR DCS LARGE DISPLAY	⊖	253	1,535	23	37 1/2	28 3/8	MTD. ON CASTERS
20	AXIS IMAGE SYSTEM	⊖	331	4,347	23 3/4	37 1/4	28	MTD. ON CASTERS
21	KLIVVER COOLING UNIT	⊖	93	13,649	18 3/4	15 1/2	18 3/4	FLOOR OR SHELF MOUNTED
22	MEDRAD MK 7 ARTERION INJECTOR INTEGRATED PEDESTAL MOUNTED	⊖	146	---	47 5/16	22	57 3/8	SEE MFG REQUIREMENTS
23	POWERWARE 9390 160KVA UPS WITH BATTERY CABINET	⊖	5,020	43,800	86 3/8	31 5/8	73 3/4	SEE MFG REQUIREMENTS
24	POWERWARE 9390 REMOTE PANEL MONITOR	⊖	5	---	11 1/4	4	8 1/2	SEE MFG REQUIREMENTS

### ARCHITECTURAL NOTES

1) ALL PRELIMINARY EQUIPMENT LAYOUTS SUBMITTED BY SIEMENS MEDICAL SOLUTIONS, INC. (SMS HEREAFTER) ARE BASED ON THE ASSUMED SPACE NECESSARY FOR THE OPERATION AND SERVICEABILITY OF THE EQUIPMENT BEING PROPOSED. SMS WILL NOT SUBMIT AN EQUIPMENT LAYOUT THAT IS NOT IN THE BEST INTEREST OF BOTH THE CUSTOMER AND SMS. ALL EQUIPMENT LAYOUTS ARE BASED EITHER ON AN ACTUAL SITE LOCATION SURVEY OR ARCHITECTURAL DRAWINGS SUPPLIED TO SMS. SMS WILL NOT BE RESPONSIBLE FOR ANY ALTERATIONS THAT ENDOURSE WITHIN DESIGNATED SAFETY AND SERVICE CLEARANCE ZONES AS INDICATED ON DRAWINGS (E. PIPE CHASES, VENTILATION DUCTS, CASEWORK, AND SOFFITS, ETC.) MADE BY THE CUSTOMER OR REQUIRED BY A CUSTOMER'S ARCHITECTURAL FIRM ONCE PRELIMINARY DRAWINGS HAVE BEEN SUBMITTED AND APPROVED. DO NOT ALTER ANY SPECIFICATIONS AND/OR DIMENSIONS WITHOUT CONTACTING AND RECEIVING WRITTEN CONFIRMATION FROM SMS PROJECT MANAGER.

2) SMS IS NOT AN ARCHITECTURAL OR ENGINEERING FIRM. DRAWINGS SUPPLIED BY SMS ARE NOT CONSTRUCTION DRAWINGS. THEREFORE, THESE DRAWINGS ARE TO BE USED ONLY FOR INFORMATION TO COMPLEMENT ACTUAL CONSTRUCTION DRAWINGS AVAILABLE FROM A CUSTOMER APPOINTED ARCHITECTURAL REPRESENTATIVE OR A CUSTOMER'S ENGINEERING DESIGN GROUP. THE CUSTOMER'S ARCHITECT AND GENERAL CONTRACTOR SHALL BE ULTIMATELY RESPONSIBLE FOR COMPLIANCE WITH ALL APPLICABLE CODES AND PROFESSIONAL DESIGN REQUIREMENTS.

3) THE CUSTOMER IS RESPONSIBLE FOR ALL ROOM AND AREA PREPARATION COSTS, PROFESSIONAL FEES, PERMITS, REPORTS, AND INSPECTION FEES.

4) EQUIPMENT WARRANTIES, EXPRESSED OR IMPLIED ON THE PART OF SMS SHALL BE CONTINGENT UPON STRICT COMPLIANCE WITH THE ARCHITECTURAL, STRUCTURAL, ELECTRICAL, MECHANICAL AND RECOMMENDATIONS AND REQUIREMENTS CONTAINED IN THESE DRAWINGS, UNLESS SPECIFIED OTHERWISE.

5) ALL DIMENSIONS SHOWN ARE TAKEN FROM FINISHED SURFACES UNLESS SPECIFIED OTHERWISE.

6) THIS DRAWING DOES NOT PROVIDE RADIATION SHIELDING REQUIREMENTS FOR X-RAY AND ASSOCIATED EQUIPMENT. THE CUSTOMER IS RESPONSIBLE FOR CONSULTING WITH A REGISTERED RADIATION PHYSICIST. ACTUAL PROTECTION REQUIREMENTS SHALL BE SPECIFIED BY A REGISTERED RADIATION PHYSICIST AT CUSTOMER'S ENGAGEMENT AND EXPENSE. RESPONSIBILITY FOR ALL INFORMATION AS TO THE ROOM LOCATION, USE, AND NUMBER OF ANTICIPATED EXAMINATIONS TO BE PERFORMED PER TIME PERIOD SHALL BE PROVIDED TO THE PHYSICIST BY THE CUSTOMER. THE CUSTOMER SHALL FURTHER TAKE ALL RESPONSIBILITY IN THE COMMUNICATION AND COORDINATION OF ACTIVITIES OF THE RADIATION PHYSICIST AND THE ARCHITECTURAL REPRESENTATIVE.

7) SMS SHALL BE RESPONSIBLE FOR SMS EQUIPMENT INSTALLATION AND CALIBRATION. CONTACT AND INSTALLATION OF SMS PROVIDED CABLES AND CONNECTIONS OF CONTRACTOR PROVIDED WIRES TO SMS EQUIPMENT. IN THE EVENT THAT SPECIFIC TRADE RULES OR LICENSE REQUIREMENTS PROHIBIT THIS, THE CUSTOMER SHALL INITIATE THE SERVICES OF APPROVED OTHER CONTRACTORS AND PAY FOR SELECTED APPROVED PARTIES TO PERFORM THIS WORK WITH JOB SUPERVISION TO BE PROVIDED BY SMS. CALIBRATION WHEN ACCOMPLISHED OUTSIDE OF NORMAL INSTALLATION SEQUENCES DUE TO CONTRACTOR OR TRADE RULE ACTIONS OR REQUIREMENTS SHALL BE SUPPORTED BY CHARGES TO AND ACCEPTED BY THE CUSTOMER AS AN ADDITIONAL INSTALLATION EXPENSE.

8) THE CUSTOMER SHALL VERIFY WITH SMS PROJECT MANAGER FINAL INSTALLATION DRAWINGS, LOCATIONS AND TRAVEL OF ALL ANCILLARY EQUIPMENT TO BE CEILING OR WALL MOUNTED (E. O.R. LIGHTS, MEDICAL GAS COILINGS, PHYSIOLOGICAL MONITORS, INJECTORS, CRT PLATFORMS, SPRINKLER HEADS, SMOKE DETECTORS, ELECTRICAL OUTLETS, HVAC GRILLES, SPEAKERS, AND GENERAL ROOM LIGHTING, ETC.).

9) THE GENERAL CONTRACTOR/CUSTOMER SHALL BE RESPONSIBLE FOR ALL FINAL PAINT, TOUCH-UP AND ANY COSMETIC OR TRIM WORK WHICH NEEDS TO BE OR IS REQUIRED TO BE COMPLETED AFTER THE INSTALLATION OF THE SMS EQUIPMENT AND ANY ASSOCIATED SUPPORT APPARATUS.

**RESTRICTIONS:**  
 DUE TO THE DISTANCE BETWEEN THE CONTROL ROOM AND EQUIPMENT ROOM, CABLES WILL NOT REACH OVERHEAD. ENSURE ACCESSIBILITY FOR UNDER-FLOOR CABLING OR SUITABILITY OF FLUSH-IN-FLOOR CABLING.

**NON-SIEMENS (OEM) DISPLAY BOOMS:** IMPORTANT SAFETY CRITERIA: FAILURE TO MEET THE FOLLOWING REQUIREMENTS MAY RESULT IN RISK OF INJURY TO PATIENTS, PERSONNEL OR DAMAGE TO THE EQUIPMENT:  
 1) IT MUST BE POSSIBLE TO MANUALLY MOVE THE BOOM VERTICALLY WITH A FORCE LESS THAN 85 N (19 LBS) WHEN POSITIONING THE DISPLAY BOOM OVER THE PATIENT.  
 2) TO AVOID THE RISK OF CRUSHING PERSONS OR DAMAGING EQUIPMENT IN THE EVENT THAT THE ANGIOGRAPHY SYSTEM COMES INTO CONTACT WITH THE DISPLAY BOOM, IT MUST BE POSSIBLE TO PUSH THE BOOM AWAY IN A HORIZONTAL DIRECTION WITH A FORCE LESS THAN 50 N (11 LBS).  
 3) MOTORIZED, HEIGHT-ADJUSTABLE DISPLAY BOOMS WHICH CANNOT MANUALLY BE PUSHED AWAY MAY NOT BE USED.

**DELIVERY AND INSTALLATION:**  
 IT IS RECOMMENDED THAT INSTALLATION OF 3RD PARTY DISPLAY BOOMS BE COORDINATED WITH THE INSTALLATION OF THE SIEMENS SYSTEM. IN ORDER TO ENSURE THE SIMULTANEOUS INSTALLATION OF THE SYSTEM AND THE DISPLAY BOOM, THE CUSTOMER SHOULD TAKE STEPS EARLY IN THE PLANNING PROCESS TO ENSURE THAT THE BOOM MANUFACTURER'S LEAD TIME CAN BE COORDINATED WITH THE DELIVERY OF THE SIEMENS EQUIPMENT. THE THIRD-PARTY MANUFACTURER IS RESPONSIBLE FOR THE INSTALLATION, MAINTENANCE, AND SERVICE OF THE DISPLAY BOOM(S). THE THIRD-PARTY MANUFACTURER IS RESPONSIBLE FOR INSTALLING THE SIEMENS COMPONENTS IN THE DISPLAY ROOM IN ACCORDANCE WITH SIEMENS SPECIFICATIONS. SIEMENS ASSUMES NO RESPONSIBILITY FOR ANY DAMAGE TO SIEMENS COMPONENTS WHICH ARE NOT INSTALLED IN ACCORDANCE WITH SIEMENS SPECIFICATIONS. SIEMENS TECHNICIANS MUST BE GIVEN INSTRUCTIONS AND/OR TRAINING AS APPROPRIATE BY THE 3RD PARTY MANUFACTURER FOR MAINTENANCE/SERVICE OF THE SIEMENS COMPONENTS (E. DISPLAY, CABLES), OR A TECHNICIAN FROM THE THIRD-PARTY MANUFACTURER MUST BE PRESENT WHENEVER ANY SERVICE WORK IS PERFORMED.

### CEILING HEIGHT

reference typical drawing set

PROJECT MANAGER: ANTHONY GIACOBBE  
 PHONE: (609) 752-1628  
 EMAIL: ANTHONY.GIACOBBE@SIEMENS.COM

VA MEDICAL CENTER  
 UNIVERSITY AVE & WOODLAND AVE, PHILADELPHIA, PA 19104

HYBRID OR / ARTIS ZEEGO  
 REFERENCE DOCUMENT - NOT FOR CONSTRUCTION

SCALE: 1/8" = 1'-0"

**SIEMENS**  
 1504475

SHEET OF 2 2  
 DATE: 11/17/15  
 DRAWN BY: M. YATZUS  
 REF: 30189324

<b>CONSULTANTS</b> MEP ENGINEERING <b>H.F. LENZ COMPANY</b> 1407 Sculp Avenue   Johnston, PA 15904   814.269.9300		<b>ENVIRONMENTAL ENGINEER</b> <b>LAWHON and ASSOCIATES, INC.</b> 975 Eastwind Drive   Suite 190   Westerville, Ohio 43081   614.818.5200		<b>A/E SEAL</b> NAME: BRUCE A. HARRIS LIC. NO.: RA-405520 EXP: 06/30/16		<b>PRIME CONTRACTOR</b> <b>HARRIS BROWN LLC</b> PROJECT AND CONSTRUCTION MANAGEMENT 985 Schrock Road   Suite 100   Columbus, Ohio 43229   614.985.1191   614.985.1194		Drawing Title: <b>SIEMENS HYBRID EQUIPMENT</b> Approved:		Project Title: Upgrade Operating Room Suite BID DOCUMENTS Location: Philadelphia, Pennsylvania Date: SEPTEMBER 11, 2015 Checked By: BHarris Drawn By: ESchroeder		Project Number: 642-11-123 Building Number: 2 Drawing Number: A1501a Dwg. # of 201		Office of Construction and Facilities Management Department of Veterans Affairs	
--	--	--	--	---	--	--	--	--	--	--	--	--	--	--	--