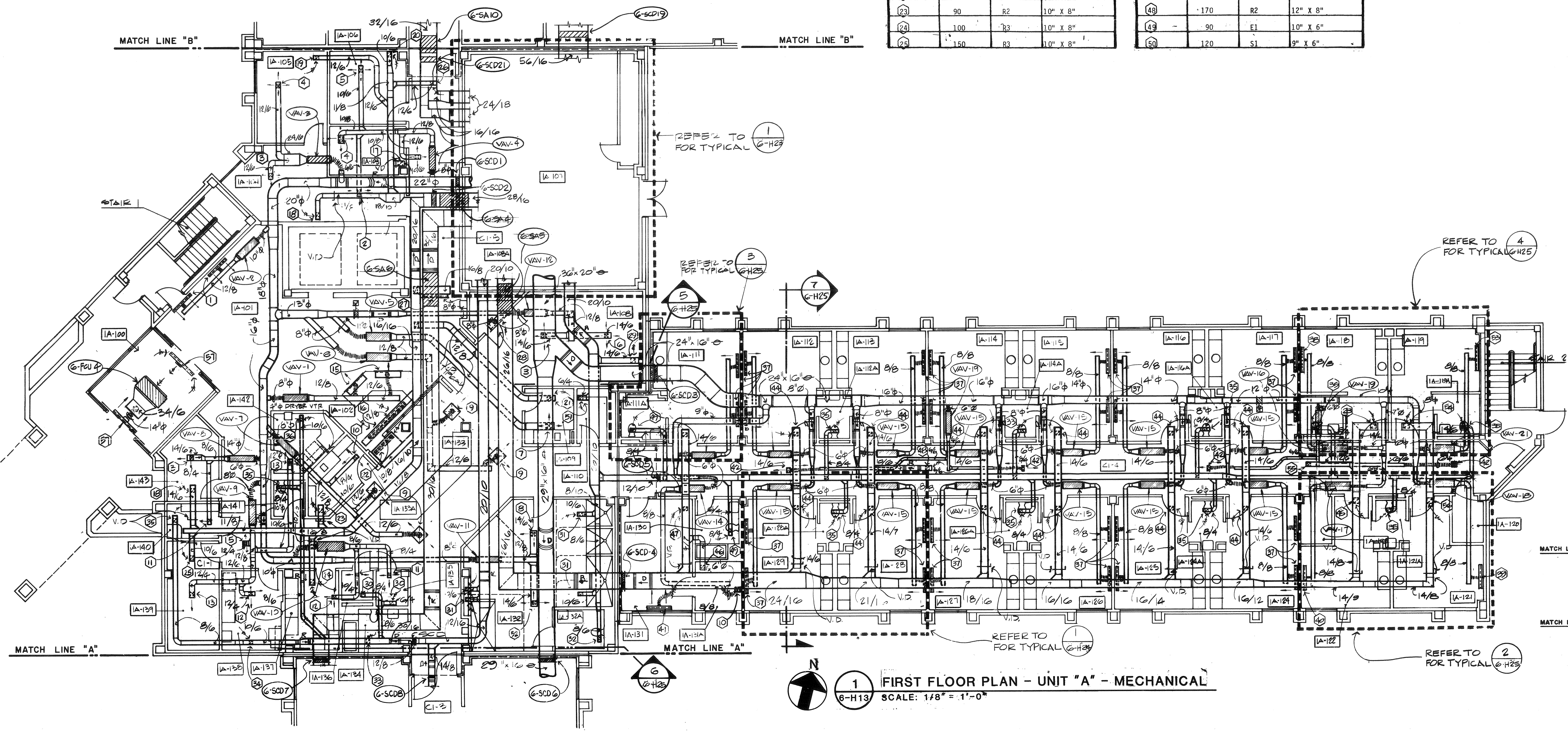


three inches = one foot
one and one half inches = one foot
one inch = one foot
three quarters inch = one foot
one half inch = one foot
three eighths inch = one foot
one quarter inch = one foot
one eighth inch = one foot



KEY #	AIR VOLUME	AIR DEVICE TYPE	AIR DEVICE SIZE
1	400	S2	48" W/4 SLOT
2	90	S1	9" X 6"
3	270	S1	12" X 12"
4	260	S1	12" X 12"
5	120	S1	9" X 9"
6	280	S1	12" X 12"
7	480	S1	15" X 12"
8	260	S1	12" X 12"
9	270	S1	12" X 12"
10	80	S1	6" X 6"
11	50	S1	6" X 6"
12	100	S1	9" X 9"
13	150	S1	9" X 9"
14	110	S1	9" X 9"
15	110	S3	48" W/3 SLOT
16	1030	R1	96" X 6"
17	110	R2	10" X 8"
18	360	R2	12" X 12"
19	260	R2	12" X 12"
20	120	R2	10" X 8"
21	480	R2	12" X 12"
22	680	R1	48" X 6"
23	90	R2	10" X 8"
24	100	R3	10" X 8"
25	150	R3	10" X 8"

KEY #	AIR VOLUME	AIR DEVICE TYPE	AIR DEVICE SIZE
26	220	R2	12" X 12"
27	440	R1	48" X 6"
28	380	E1	12" X 12"
29	300	E1	12" X 12"
30	50	E2	10" X 6"
31	140	E1	12" X 12"
32	70	E1	10" X 6"
33	80	E1	10" X 6"
34	150	E1	10" X 8"
35	60	E1	10" X 6"
36	170	E1	10" X 8"
37	110	S2	48" W/2 SLOT
38	150	S2	48" W/3 SLOT
39	190	S2	48" W/3 SLOT
40	170	S2	48" W/3 SLOT
41	380	S3	48" W/3 SLOT
42	110	S1	9" X 5"
43	130	R2	10" X 8"
44	190	R2	10" X 10"
45	140	R2	12" X 8"
46	50	R3	6" X 6"
47	380	R2	12" X 12"
48	170	R2	12" X 8"
49	90	E1	10" X 6"
50	120	S1	9" X 6"

KEY #	AIR VOLUME	AIR DEVICE TYPE	AIR DEVICE SIZE
51	40	E2	10" X 6"
52	250	S1	12" X 12"
53	160	S2	48" W/3 SLOT
54	100	R2	10" X 8"
55	180	R2	10" X 10"
56	160	R3	12" X 8"
57	1000	S2	60" W/5 SLOT
58	220	S1	12" X 12"

NUMBER	NAME
1A-100	VESTIBULE
1A-101	LOBBY
1A-102	RECEPTION
1A-103	OFFICE
1A-104	SECRETARY
1A-105	N. H. SUPERVISOR
1A-106	EXAM
1A-107	MECHANICAL
1A-108	LOUNGE
1A-108A	STORAGE
1A-109	NOUR. KITCHEN
1A-110	WARD SUPPLY
1A-111	2 BED ROOM
1A-111A	TOILET
1A-112	2 BED ROOM
1A-112A	TOILET
1A-113	2 BED ROOM
1A-114	2 BED ROOM
1A-114A	TOILET
1A-115	2 BED ROOM
1A-116	2 BED ROOM
1A-116A	TOILET
1A-117	2 BED ROOM
1A-118	1 BED ROOM
1A-118A	TOILET
1A-119	1 BED ROOM
1A-119A	TOILET
1A-120	ELECTRIC
1A-121	1 BED ROOM
1A-121A	TOILET
1A-122	1 BED ROOM
1A-123	STORAGE
1A-124	2 BED ROOM
1A-124A	TOILET
1A-125	2 BED ROOM
1A-126	2 BED ROOM
1A-126A	TOILET
1A-127	2 BED ROOM
1A-128	2 BED ROOM
1A-128A	TOILET
1A-129	2 BED ROOM
1A-130	BATH
1A-131	QUIET ROOM
1A-131A	STORAGE
1A-132	CONGREGATE BATH
1A-132A	TOILET
1A-133	NURSE STATION
1A-134	BATH
1A-135	ELECTRIC
1A-136	SIGNAL
1A-137	CLEAN LINEN
1A-138	SOILED UTILITY
1A-139	EQUIPMENT STORAGE
1A-140	HAC
1A-141	STAFF TOILET
1A-142	LAUNDRY
1A-143	HEAD NURSE
C1-1	CORRIDOR
C1-2	CORRIDOR
C1-3	CORRIDOR
C1-4	CORRIDOR
C1-5	CORRIDOR

FIRST FLOOR PLAN - UNIT "A" - MECHANICAL
SCALE: 1/8" = 1'-0"

KEY PLAN

Revisions

Date

PHILIPS & SIMMONS & GARZA ARCHITECTS

5545 Fredricksburg Road Suite 100 San Antonio, Texas 78229

GOETTING & ASSOCIATES INC. MECHANICAL/ELECTRICAL ENGINEERS 535 GPM South San Antonio, Texas 78216

REYNOLDS - SCHLATTNER - CHETTER & ASSOC. INC. STRUCTURAL ENGINEERS Cypress Tower 1000, 122 N. MAIN San Antonio, Texas 78212

Serial No. - 3088

Drawing Title

FIRST FLOOR PLAN - UNIT "A" - MECHANICAL

Approved Project Director

Project Title

120 BED NURSING HOME CARE UNIT

Building Number

6

Location

VAMC - SAN ANTONIO, TEXAS

Date

APR. 16, 1984

Project No.

671-014

Drawing No.

6-H13

Dwg. 13 Of 26

Veterans Administration