

SECOND FLOOR  
QUAD A

PAT. RM ONE BED	228
PAT. BATHRM	228.1
NURSE STATION	229
PAT. RM ONE BED	230
PAT. BATHRM	230.1
PAT. RM ONE BED	232
PAT. BATHRM	232.1
EXAM/ TREATMENT	233
PAT. RM ONE BED	234
PAT. BATHRM	234.1
PAT. RM ONE BED	236
PAT. BATHRM	236.1
DINING/ LIVING	237
STORAGE	237.1
PAT. LAUNDRY	238
FAMILY ROOM	240
TOILET	241
TOILET	241
DAY ROOM	243
PAT. RM ONE BED	244
PAT. BATHRM	244.1
PAT. RM ONE BED	246
PAT. BATHRM	246.1
NURSE MGR	247
PAT. RM ONE BED	248
PAT. BATHRM	248.1
NURSE STATION	249
WARD CLERK	249.1
ISOLATION VEST	250
PAT STO.	250.1
HAC	251
PAT. RM ONE BED	252
PAT. BATHRM	252.1
PAT. RM ONE BED	254
PAT. BATHRM	254.1
CORRIDOR	255
MED RM	255.1
CLEAN UTILITY	255.2
SOILED UTILITY	255.3
PAT CARE EQUIP	255.4
MED EQUIP STORAGE	255.5
NOUR	255.6
RESIDENT WORK ROOM	255.7
REPORT RM NURSE	255.8
STORAGE ALCOVE	257
TEL	258
CORRIDOR	CR2-200
CORRIDOR	CR2-200
CORRIDOR	CR2-200
SERVICE ELEVATOR LOBBY	CR2-200

## SHEET NOTES

REFER TO MP3 SERIES DRAWINGS FOR THERMOSTAT LOCATIONS.

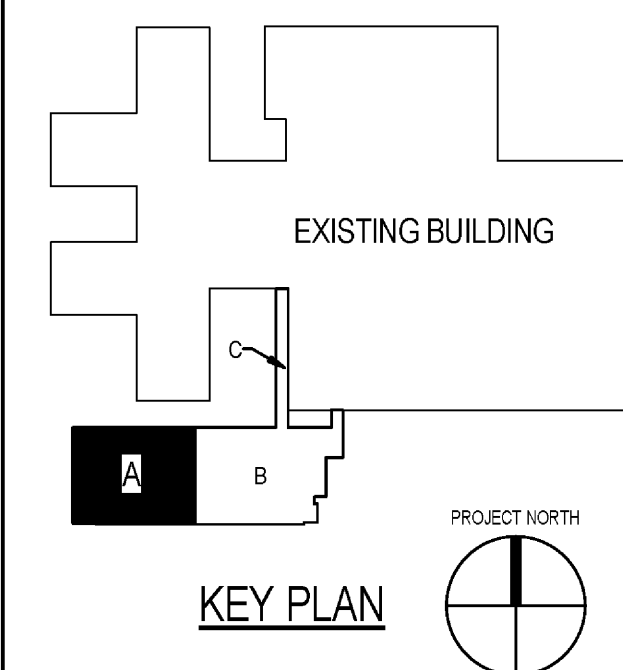
BRANCH DUCT TO CEILING DIFFUSER IS TO BE THE SAME SIZE AS THE DIFFUSER NECK UNLESS OTHERWISE NOTED.

VAV/CAV BOX INLET BRANCH DUCT SIZE IS TO BE THE SAME AS THE COX INLET SIZE UNLESS OTHERWISE NOTED.


THE SUPPLY DUCT FROM THE VAV/CAV BOX THAT SERVES A SINGLE DIFFUSER IS TO BE THE SAME SIZE AS THE BOX OUTLET UNLESS OTHERWISE NOTED.

## KEY NOTES

SOILED UTILITY	255.3
PAIT CARE EQUIP	255.4
MED EQUIP STORAGE	255.5
NOUR	255.6
RESIDENT WORK ROOM	255.7
REPORT RM NURSE	255.8
STORAGE ALCOVE	257
TEL	258
CORRIDOR	CR2-206
CORRIDOR	CR2-206
CORRIDOR	CR2-207
SERVICE ELEVATOR LOBBY	CR2-208



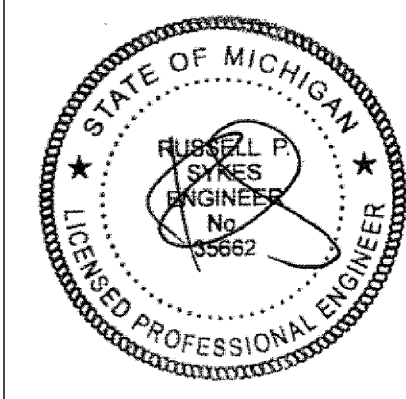
FULLY SPRINKLERED

Project Number <b>671-048</b>	Office of Facilities Management
Building Number <b>1</b>	
Drawing Number  <b>MH2.2.A</b> Dwg. of	
 Department of Veterans Affairs	

CONSTRUCTION DOCUMENTS	10/15/2009
PROGRESS CONSTRUCTION DOCUMENT SET	06/15/2009
DESIGN DEVELOPMENT 2	05/15/2009
DESIGN DEVELOPMENT 1	02/20/2009
Revisions:	Date

## CONSULTANTS:

<b>CIVIL ENGINEER</b> <b>AtMcDonald Associates</b> 605 N. 1st St., Suite 200 San Antonio, TX 78205-2221 T 210.726.9623	<b>FORCE PROTECTION</b> <b>AtMcDonnell Douglas</b> 2001 Jefferson Davis Highway, Suite 1001 Fort Worth, TX 76102-1001 T 817.616.6781	<b>SECURITY</b> <b>AtMcDonnell Douglas</b> 1400 Chennedy Drive, Suite 500 Fort Worth, TX 76102-1001 T 817.616.6781	<b>MATERIALS MANAGEMENT</b> <b>AtMcDonnell Douglas</b> 1400 Chennedy Drive, Suite 500 Fort Worth, TX 76102-1001 T 817.616.6781
<b>SALES/ENGINEER, DESIGNER</b> <b>AtMcDonnell Douglas</b> 13217 W. Gidley Lane San Antonio, Texas 78248 T 210.659.006	<b>ELEVATOR CONSULTANT</b> <b>AtMcDonnell Douglas</b> 7421 Sandcastle Way Colorado, MO 21548 T 410.200.2010	<b>MEDICAL EQUIPMENT PLANNING</b> <b>AtMcDonnell Douglas</b> 1850 General George B. Pullen Drive Fort Worth, Texas 76102 T 817.275.3100	<b>HAZARDOUS MATERIAL</b> <b>AtMcDonnell Douglas</b> 1400 Chennedy Drive, Suite 500 Fort Worth, TX 76102-1001



## ARCHITECT/ENGINEERS:

SMITHGROUP | MARMON MOK  
a joint venture

SMITHGROUP, INC.  
1850 K Street NW  
Suite 250  
Washington, DC 20006  
T 202.842.2100  
F 202.974.4500  
[www.smithgroup.com](http://www.smithgroup.com)

MARMON MOK  
One Riverwalk Place  
700 N. St. Mary's Suite 1600  
San Antonio, TX 78205  
T 210.223.9492  
F 210.223.2583  
www.marmonmok.com

Drawing Title	SECOND FLOOR HVAC PLAN QUAD A
---------------	----------------------------------

Approved: Project Director

Project Title	POLYTRAUMA REHABILITATION CENTER/ RENOVATION
---------------	---

<b>Location</b> AUDIE L. MURPHY VETERANS MEMORIAL HOSPITAL SAN ANTONIO, TEXAS	
<b>Date</b> 15 October 2009	<b>Checked</b>

	Checked	Draw
--	---------	------

☐ Draw☐ Draw

**MH2.2.A**  
Dwg. of

Office of  
Facilities  
Management

