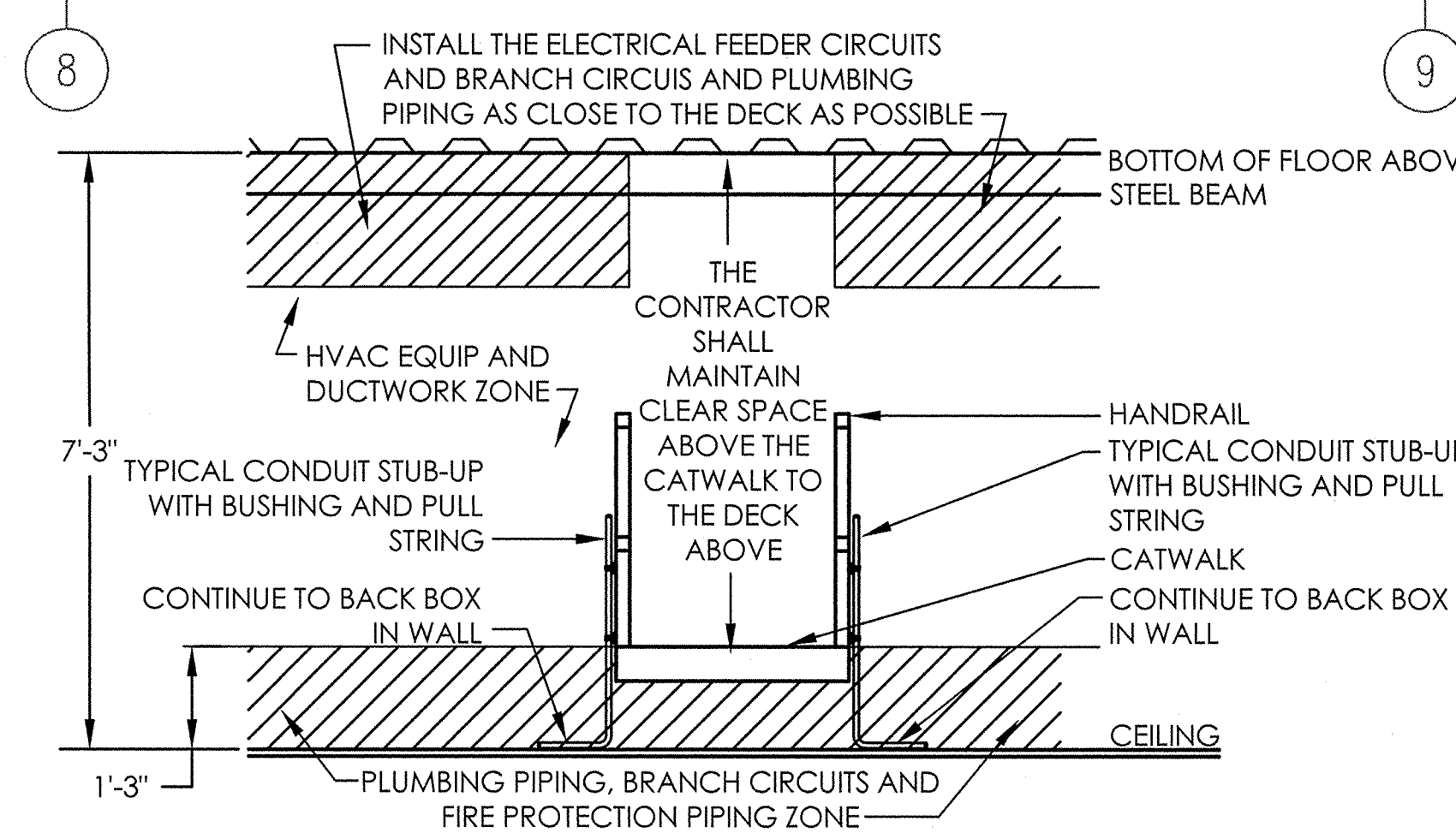
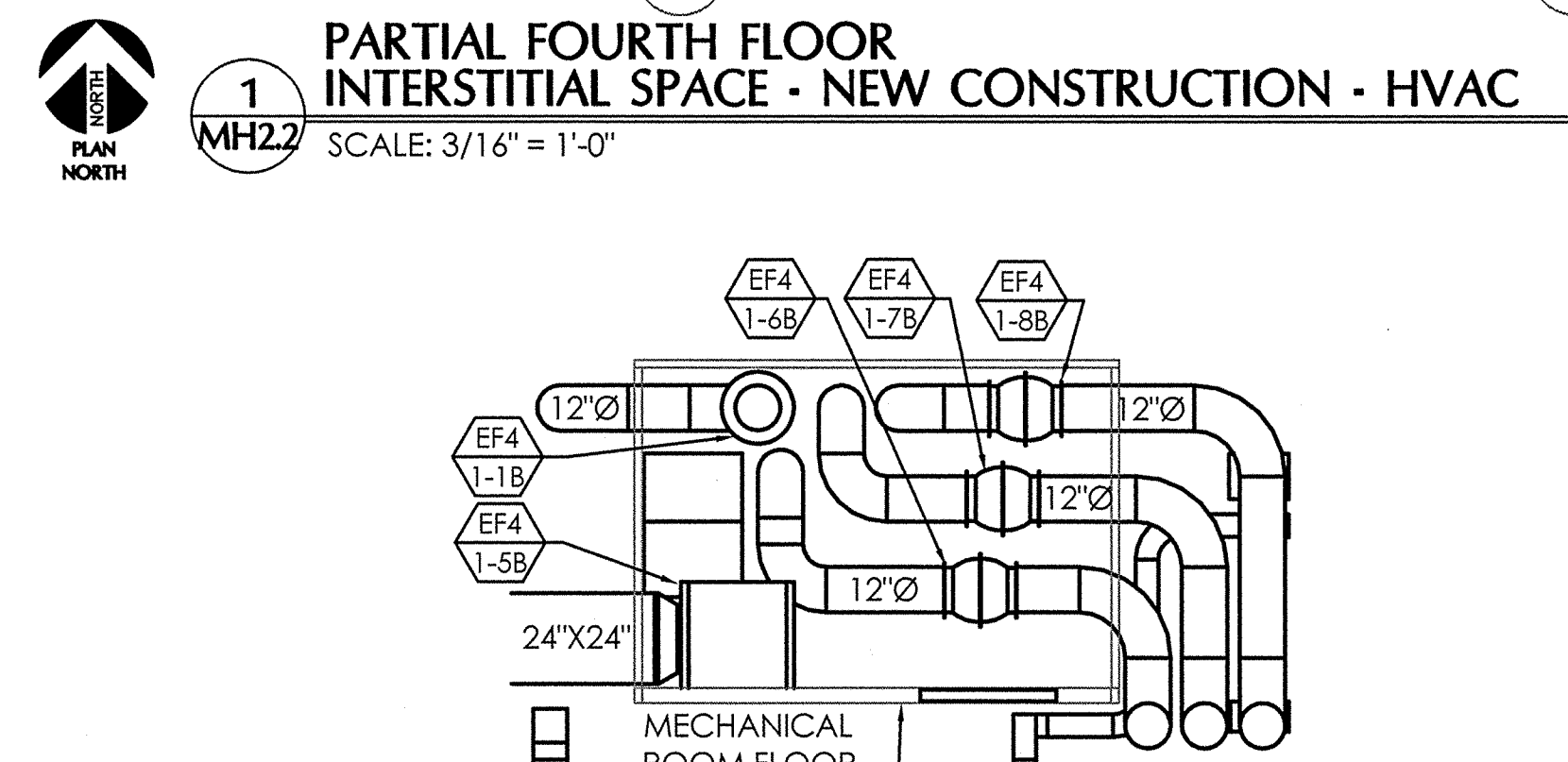


- GENERAL NOTES:**
- REFERENCE SHEET MH0.1 FOR LEGEND, SYMBOLS, ABBREVIATIONS AND FURTHER GENERAL NOTES.
 - ALL ITEMS THAT REQUIRE ACCESS FOR OPERATING, CLEANING, SERVICING AND MAINTENANCE, SHALL BE EASILY AND SAFELY ACCESSIBLE BY PERSONS STANDING AT FLOOR LEVEL, OR STANDING ON EXISTING PERMANENT PLATFORMS, WITHOUT THE USE OF PORTABLE LADDERS. EXAMPLES OF THESE ITEMS INCLUDE, BUT ARE NOT LIMITED TO: TERMINAL UNITS, ALL TYPES OF VALVES, FILTERS AND STRAINERS.
 - THE CONTRACTOR SHALL COORDINATE THE INSTALLATION OF THE NEW DUCTWORK AND PIPING WITH THE EXISTING STRUCTURE. ADDITIONAL OFFSETS AND FITTINGS AS REQUIRED TO ACCOMMODATE ROUTING OF THE DUCTWORK AROUND EXISTING STRUCTURE IS CONSIDERED PART OF THIS WORK.
 - THE CONTRACTOR SHALL REROUTE THE EXISTING PLUMBING PIPING AS REQUIRED TO INSTALL THE HVAC DUCTWORK.

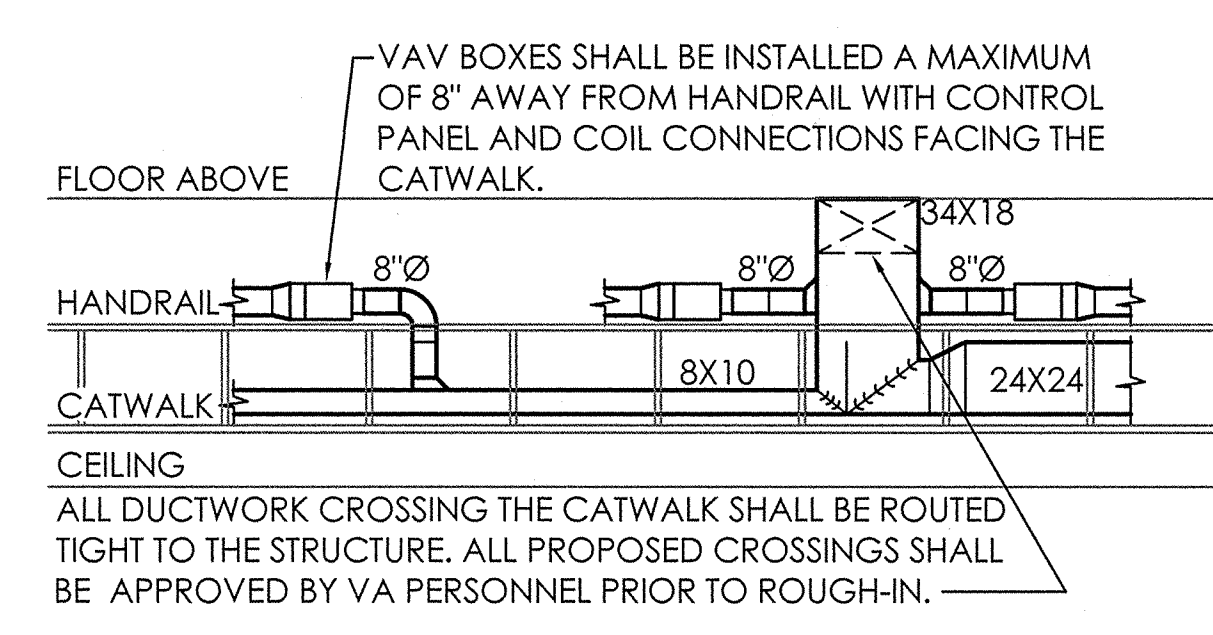
- KEYED NOTES:**
- ROUTE THE DUCTWORK DOWN TO THE AIR DEVICE AND CONNECT. REFER TO SHEET MH2.1 FOR AIR DEVICE SIZE AND LOCATION; REFER TO DETAIL 8/MH3.1 FOR CONNECTION TO AIR DEVICE DETAIL.
 - FURNISH AND INSTALL A NEW 20 GA GALVANIZED STEEL EXHAUST AIR PLENUM WITH 24"x24" ACCESS PANELS. CONNECT THE NEW PLENUM TO THE EXISTING SOFFIT GRILLES. CLEAN THE EXISTING SOFFIT GRILLES PRIOR TO INSTALLING THE NEW PLENUM.
 - ROUTE THE DUCT AS HIGH AS POSSIBLE ACROSS THE CATWALK. ALL CATWALK CROSSINGS MUST BE APPROVED BY VA PERSONNEL PRIOR TO INSTALLATION.
 - FURNISH AND INSTALL A NEW CF-1X1-012-P-2GBSS CAMFIL/FARR HEPA FILTRATION SYSTEM OR APPROVED EQUIVALENT. MAXIMUM PRESSURE DROP ACROSS FILTER AND ASSEMBLY SHALL BE 0.35" WC. THE HEPA FILTRATION SYSTEM SHALL BE HUNG FROM THE EXISTING STRUCTURE AND INSTALLED A MAXIMUM OF 6" FROM THE CATWALK HANDRAIL.
 - FURNISH AND INSTALL A NEW 150"x24"x30" OUTSIDE AIR PLENUM WITH 24"x24" ACCESS PANELS. CONNECT THE NEW PLENUM TO THE EXISTING SOFFIT GRILLES. CLEAN THE SOFFIT GRILLES PRIOR TO INSTALLATION OF THE NEW PLENUM.
 - APPROXIMATE LOCATION OF EXISTING SANITARY SEWER PIPING FROM ABOVE TO REMAIN IN SERVICE. THE CONTRACTOR SHALL COORDINATE THE INSTALLATION OF THE NEW HVAC SYSTEM WITH THE EXISTING SEWER PIPING. SANITARY SEWER MAINS SHALL REMAIN BUT RUN OUTS CAN BE REROUTED TIGHT TO STRUCTURE.
 - INTERNALLY LINE THE FIRST 10'-0" OF DUCT OUT FROM THE MECHANICAL ROOM WITH 1/2" THICK ELASTOMERIC FOAM INSULATION.



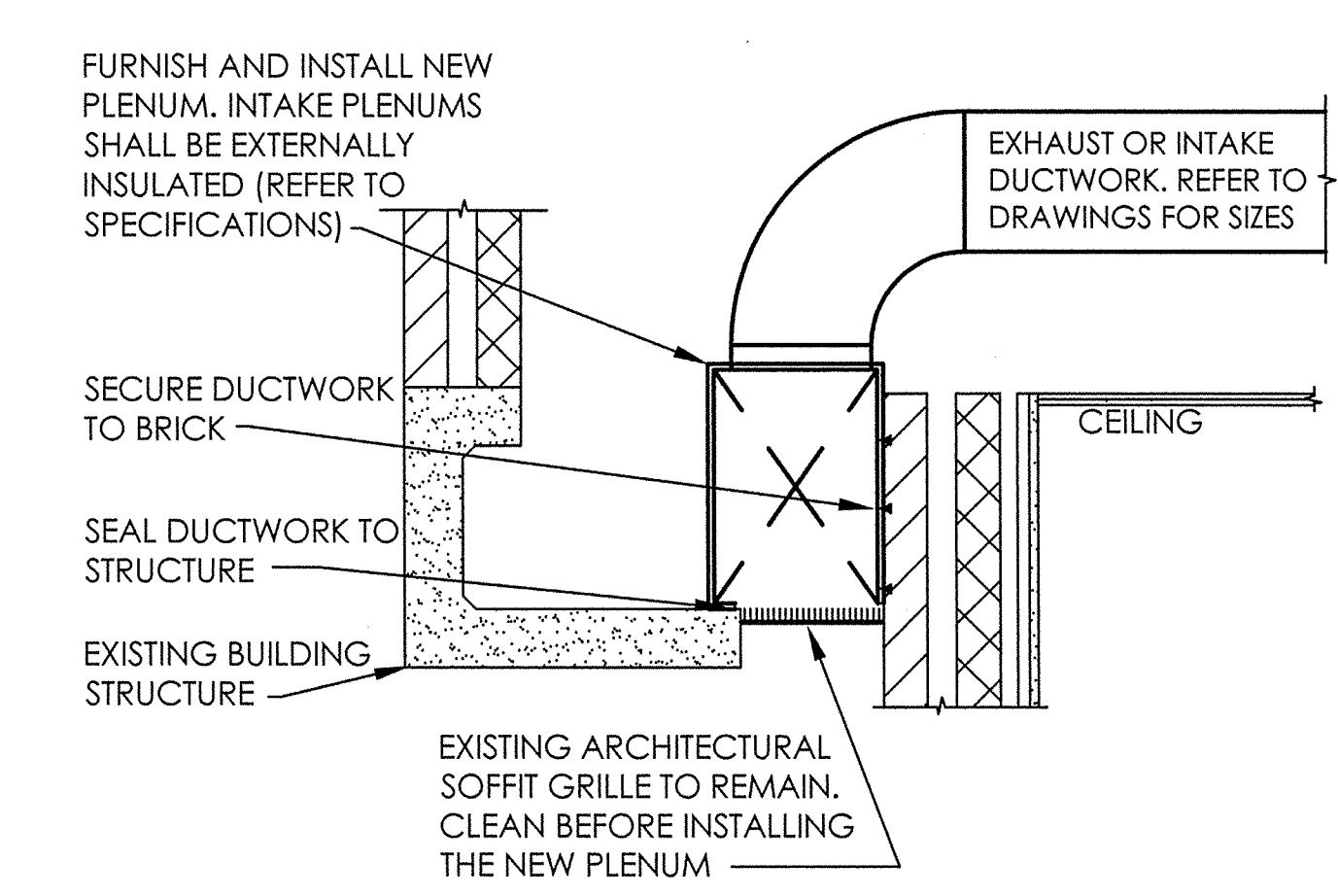
2 INTERSTITIAL COORDINATION DETAIL
MH22 NOT TO SCALE



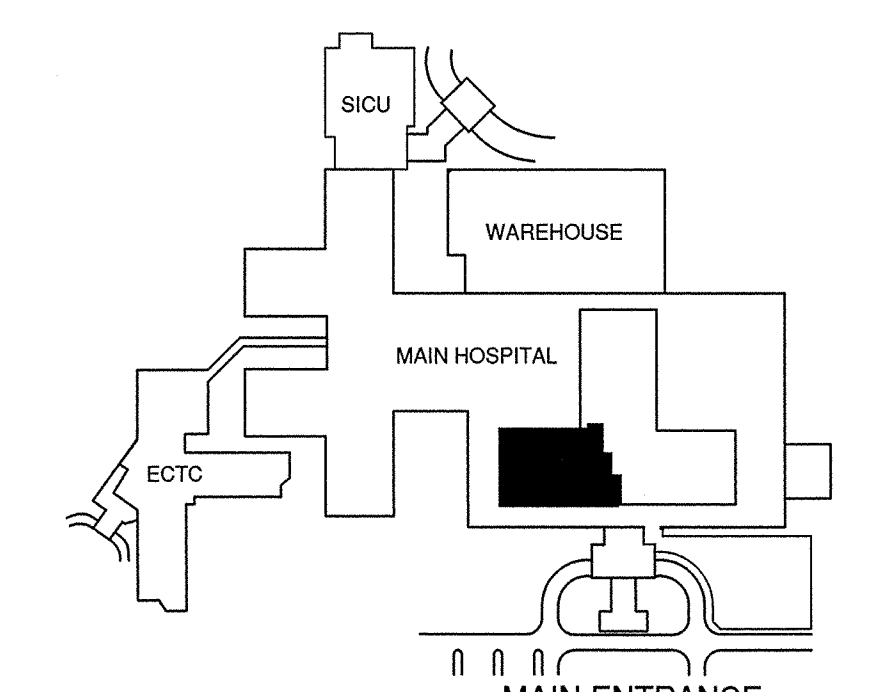
3 EXHAUST FAN MECHANICAL ROOM SECTION
MH22 1/4" = 1'-0"



4 TYPICAL DUCTWORK ROUTING SECTION
MH22 NOT TO SCALE



5 EXISTING SOFFIT GRILL DETAIL
MH22 NOT TO SCALE



CONSULTANTS: Barker & Associates, Inc. Consulting Engineers Firm Registration No. F-9213 824 Broadway St., Suite 201 San Antonio, Texas 78215 Phone: (210) 826-9191 Fax: (210) 223-9194 Email: barker@barkerandassociates.com		Concur M & O Concur Bio-Med Concur Safety Approved: Service Chief Approved: Service Chief Approved: Service Chief Approved: Service Chief Approved: Chief of Staff	Approved: Service Chief Approved: Service Chief Approved: Service Chief Approved: Service Chief Approved: Chief of Staff	100% SUBMITTAL 	ARCHITECT: WESTEAST DESIGN GROUP 200 E. GRAYSON ST., SUITE 207 SAN ANTONIO, TEXAS 78215 USA 210.530.0755 FAX: 210.293.1018 These documents can not be copied or reproduced without written consent from WestEast Design Group	Drawing Title PARTIAL FOURTH FLOOR INTERSTITIAL SPACE - NEW CONSTRUCTION - HVAC Approved Project Director	Project Title WARD UPGRADES/ EXPANSION 4B Location Audie L. Murphy Memorial Veterans Hospital San Antonio, Texas Date 07 Sept. 2012 Checked DB Drawn RM	Project Number 671-11-137 Building Number 1 Drawing Number MH2.2 Dwg. 38 of 68	Office of Facilities Management Department of Veterans Affairs
---	--	---	--	---------------------------	---	--	---	--	---