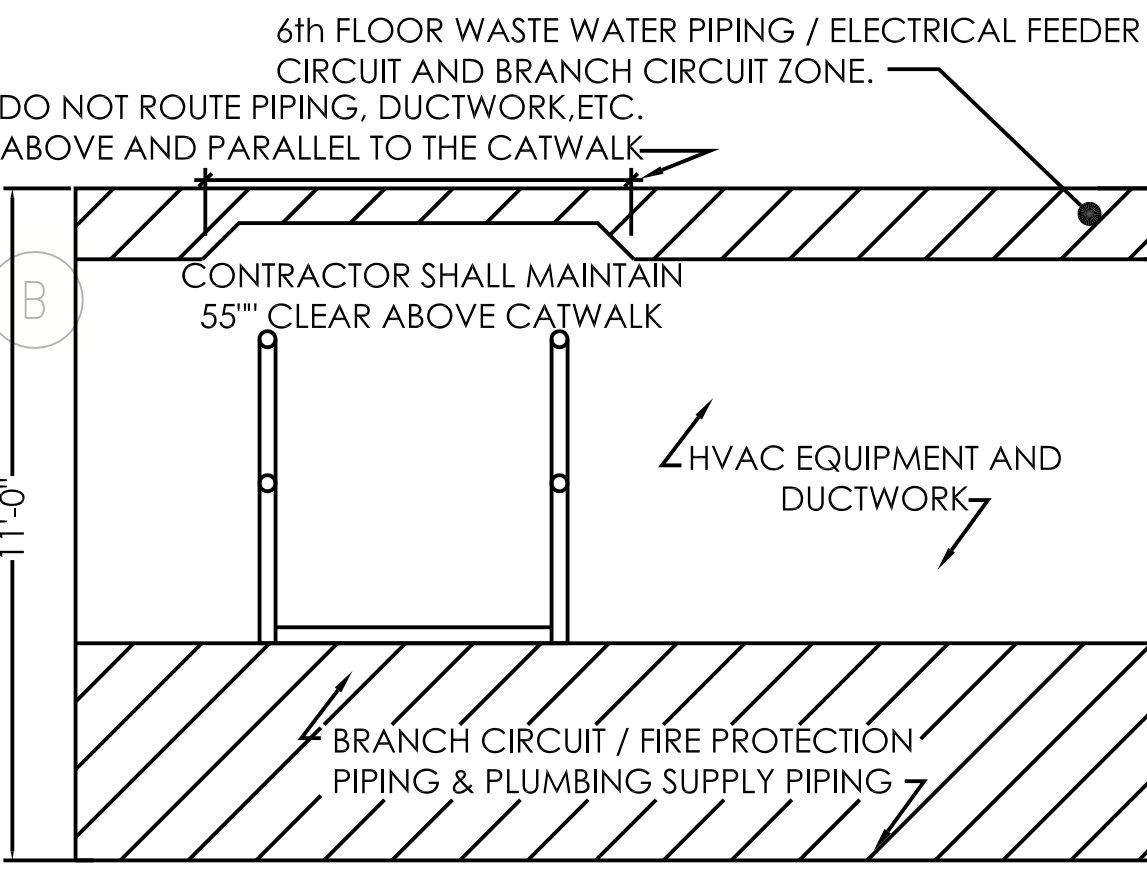
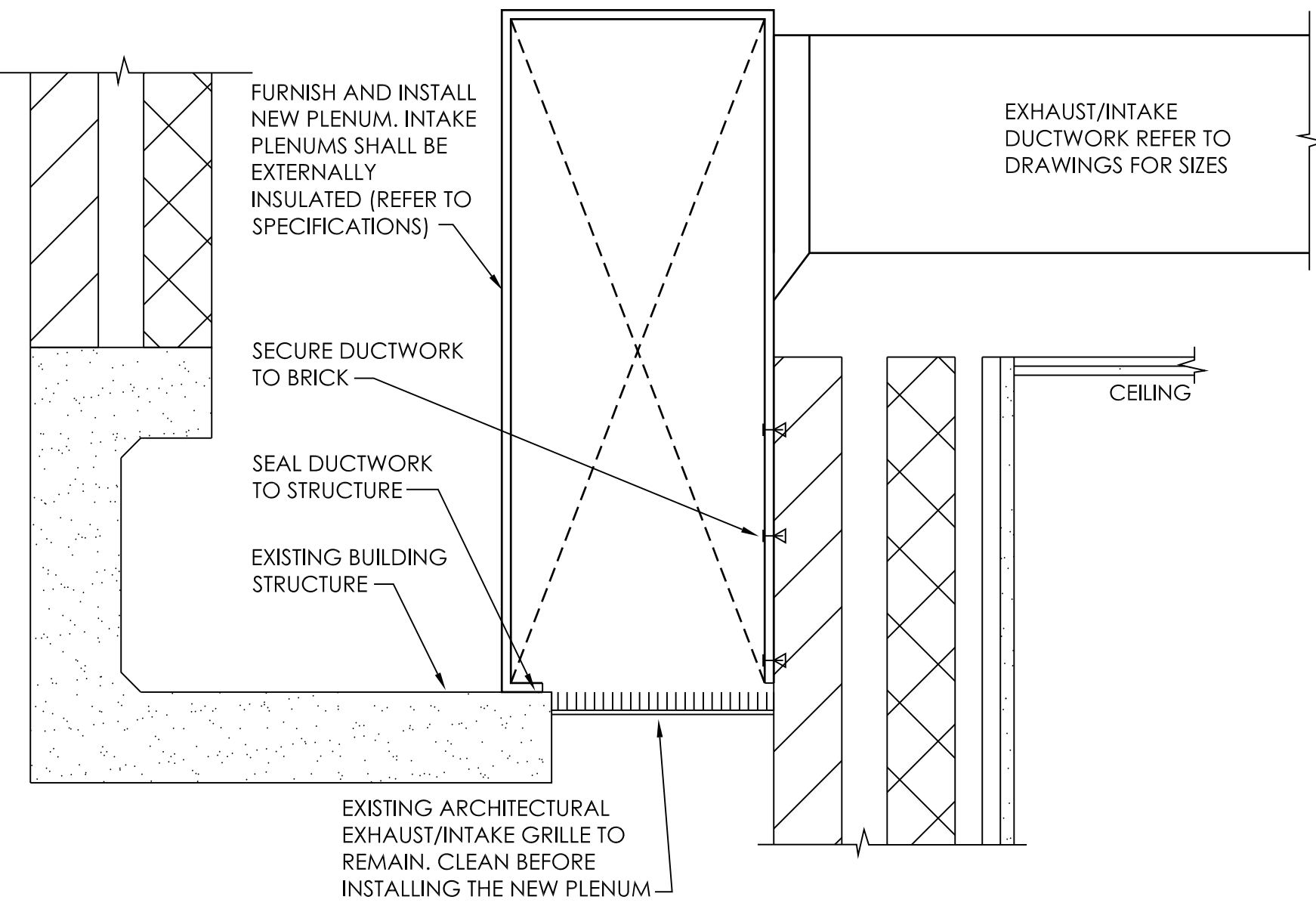


GENERAL NOTES:

- REFERENCE SHEET MH0.1 FOR LEGEND, SYMBOLS, ABBREVIATIONS AND FURTHER GENERAL NOTES.
- ALL ITEMS THAT REQUIRE ACCESS, SUCH AS FOR OPERATING, CLEANING, SERVICING, MAINTENANCE, AND CALIBRATION, SHALL BE EASILY AND SAFELY ACCESSIBLE BY PERSONS STANDING AT FLOOR LEVEL, OR STANDING ON PERMANENT PLATFORMS, WITHOUT THE USE OF PORTABLE LADDERS. EXAMPLES OF THESE ITEMS INCLUDE, BUT ARE NOT LIMITED TO: TERMINAL UNITS, ALL TYPES OF VALVES, FILTERS, STRAINERS, TRANSMITTERS, AND CONTROL DEVICES.
- THE CONTRACTOR SHALL COORDINATE THE INSTALLATION OF THE NEW DUCTWORK AND PIPING WITH THE EXISTING STRUCTURE. ADDITIONAL OFFSETS AND FITTINGS AS REQUIRED TO ACCOMMODATE ROUTING OF THE DUCTWORK AROUND EXISTING STRUCTURE IS CONSIDERED PART OF THIS WORK.

KEYED NOTES:

- ROUTE THE DUCTWORK DOWN TO THE AIR DEVICE AND CONNECT. REFER TO SHEET MH2.1 FOR AIR DEVICE SIZE AND LOCATION. REFER TO DETAIL 8/MH3.1 FOR CONNECTION TO AIR DEVICE DETAIL.
- FURNISH AND INSTALL A NEW 20 GA 44"(W)X12"(D)X24"(L) INSULATED OUTSIDE AIR PLENUM. CONNECT NEW OUTSIDE AIR PLENUM TO THE EXISTING ARCHITECTURAL GRILLE REFERENCE DETAIL 2/MH2.2 REMOVE THE BLANK OFF PLATE AND CLEAN THE GRILLE PRIOR TO INSTALLING PLENUM.
- FURNISH AND INSTALL A NEW 20 GA 180"(W)X12"(D)X24"(L) EXHAUST AIR PLENUM. CONNECT NEW OUTSIDE AIR PLENUM TO THE EXISTING ARCHITECTURAL GRILLE REMOVE THE BLANK OFF PLATE AND CLEAN THE GRILLE PRIOR TO INSTALLING PLENUM.
- FURNISH AND INSTALL A NEW CF-1X1-012-P-2GBSS CAMFIL/FARR HEPA FILTRATION SYSTEM OR APPROVED EQUAL. THE HEPA FILTRATION SYSTEM SHALL BE HUNG FROM STRUCTURE AND INSTALLED A MAXIMUM OF 6" FROM CATWALK HANDRAIL. DUCTWORK AND FAN SHALL BE LABELED AS BIOHAZARD. COORDINATE LOCATIONS AND STYLE OF LABELS WITH VA PERSONNEL. FURNISH AND INSTALL A SAFETY CHAIN ON THE DOOR FOR THE FILTER BOX TO PREVENT THE DOOR FROM BEING DROPPED THROUGH THE CEILING BELOW WHEN BEING SERVICED.
- TRANSITION AND ROUTE DUCT THRU THE EXISTING STRUCTURE.
- DUCTWORK WHICH CROSSES ABOVE THE CATWALK SHALL BE ROUTED TIGHT TO THE STRUCTURE ABOVE IN ORDER TO PROVIDE THE MOST CLEARANCE POSSIBLE FOR THE CATWALK. ALL DUCTWORK CROSSING THE CATWALK SHALL BE APPROVED BY VA PERSONNEL PRIOR TO INSTALLATION.



AS-BUILT DRAWINGS

<div>ASI NO. 30 30-JUL-14</div> <div>ASI NO. 29 29-OCT-13</div> <div>ASI NO. 16 26-SEP-11</div> <div>ASI NO. 13 13-JUN-11</div> <div>Revisions Date</div>	<div>CONSULTANTS:</div> <div>Barker & Associates, Inc. Consulting Engineers Firm Registration No. F-9213 824 Broadway St., Suite 201 San Antonio, Texas 78215 Phone: (210) 828-9191 Fax: (210) 223-9194 Email: barkerassociates@barker-so.com</div>	<div>Approved: Assistant Director</div> <div>Approved: Chief of Staff</div> <div>Approved: Chief, Engineering</div> <div>Approved: Service Chief</div> <div>Approved: Service Chief</div> <div>Approved: Service Chief</div> <div>Approved: Chief, BldgM</div> <div>Approved: Chief, EMS</div> <div>Approved: Chief, Infection Control</div> <div>Approved: Chief, IT</div> <div>Approved: Chief, M & O</div> <div>Approved: Chief, Police</div> <div>Approved: Chief, Safety</div> <div>Approved: Chief</div> <div>Approved: Chief</div>	<div>RECORD DRAWINGS</div> <div>THIS DOCUMENT IS RELEASED FOR THE PURPOSE OF RECORD DRAWING PREPARATION UNDER THE AUTHORITY OF DON BARKER, P.E. LICENSE NO. 87623 ON 07 JUL 2015. IT IS NOT TO BE USED FOR CONSTRUCTION, BIDDING, PERMIT, OR OTHER PURPOSES WITHOUT THE WRITTEN CONSENT OF THE ENGINEER OF RECORD. THE INFORMATION SHOWN ON THIS DOCUMENT WAS DEVELOPED FROM INFORMATION PROVIDED BY THE CONTRACTOR. BARKER AND ASSOCIATES DOES NOT GUARANTEE OR WARRANT THE CAPACITY, LOCATION, SIZE OR QUANTITY OF ITEMS SHOWN.</div>	<div>ARCHITECT:</div> <div>WESTEAST DESIGN GROUP 1617 E. COMMERCE ST., SUITE 7102, SAN ANTONIO, TEXAS 78205 USA 210.530.0755 FAX: 210.530.9427 These documents can not be copied or reproduced without written consent from WestEast Design Group</div>	<div>Drawing Title</div> <div>PARTIAL INTERSTITIAL SPACE - 5A - NEW CONSTRUCTION - HVAC</div> <div>Approved Project Director</div>	<div>Project Title</div> <div>WARD UPGRADES/ EXPANSION 5A</div> <div>Location</div> <div>Audie L. Murphy Memorial Veterans Hospital San Antonio, Texas</div> <div>Date</div> <div>12 MAY 2010</div> <div>Checked</div> <div>DB</div> <div>Drawn</div> <div>RM</div>	<div>Project Number</div> <div>671-236</div> <div>Building Number</div> <div>1</div> <div>Drawing Number</div> <div>MH2.2</div> <div>Dwg. 39 of 70</div>	<div>Office of Facilities Management</div> <div>Department of Veterans Affairs</div>
---	---	---	---	---	--	---	--	---