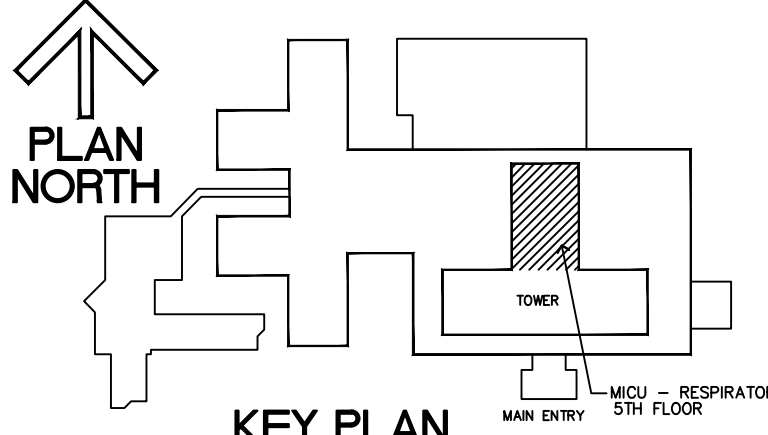


KEYED NOTES

- 1 PROVIDE AND INSTALL TRIATEX MODEL 1630 MONITOR AS INDICATED ON DRAWING. MONITOR SHALL BE CONNECTED AND CONTROLLED BY DDC SYSTEM.

1 PARTIAL FIFTH FLOOR PLAN - HVAC
SCALE: 1/4" = 1'-0"



Revisions	Date

ENGR :

HMC & ASSOCIATES, INC.
Consulting Mechanical - Electrical Engineers
70 N.E. Loop 410, Suite 1070
San Antonio, Texas 78216
(210) 349-0800
FAX (210) 349-2736
E-Mail: HMC@HMCENGINEERS.COM

Daniel T. Muzquiz & Associates
Architectural Design Group
11314 SIR WINSTON, SUITE-B, SAN ANTONIO, TX (210)340-0077



CONCUR: CHIEF BIO-MED
CONCUR: M & O
CONCUR: OPER
CONCUR: SAFETY

APPROVED: SVC. CHIEF
APPROVED: SVC. CHIEF
APPROVED: SVC. CHIEF
APPROVED: CHIEF OF STAFF

Drawing Title
PARTIAL FIFTH FLOOR PLAN - HVAC
FIFTH FLOOR - AREA B
Approved Chief Of Engineering
Approved Associate Director

Project Title
RELOCATE MICU/ RESPIRATORY OFFICES
Building Number
1
Checked
BR/MIG
Drawn
Location
Audie L. Murphy Hospital
San Antonio, Texas

Date
01-28-04
Project No.
671-02-221
DRAWING NO.
M201
Dwg. 4 of 5

