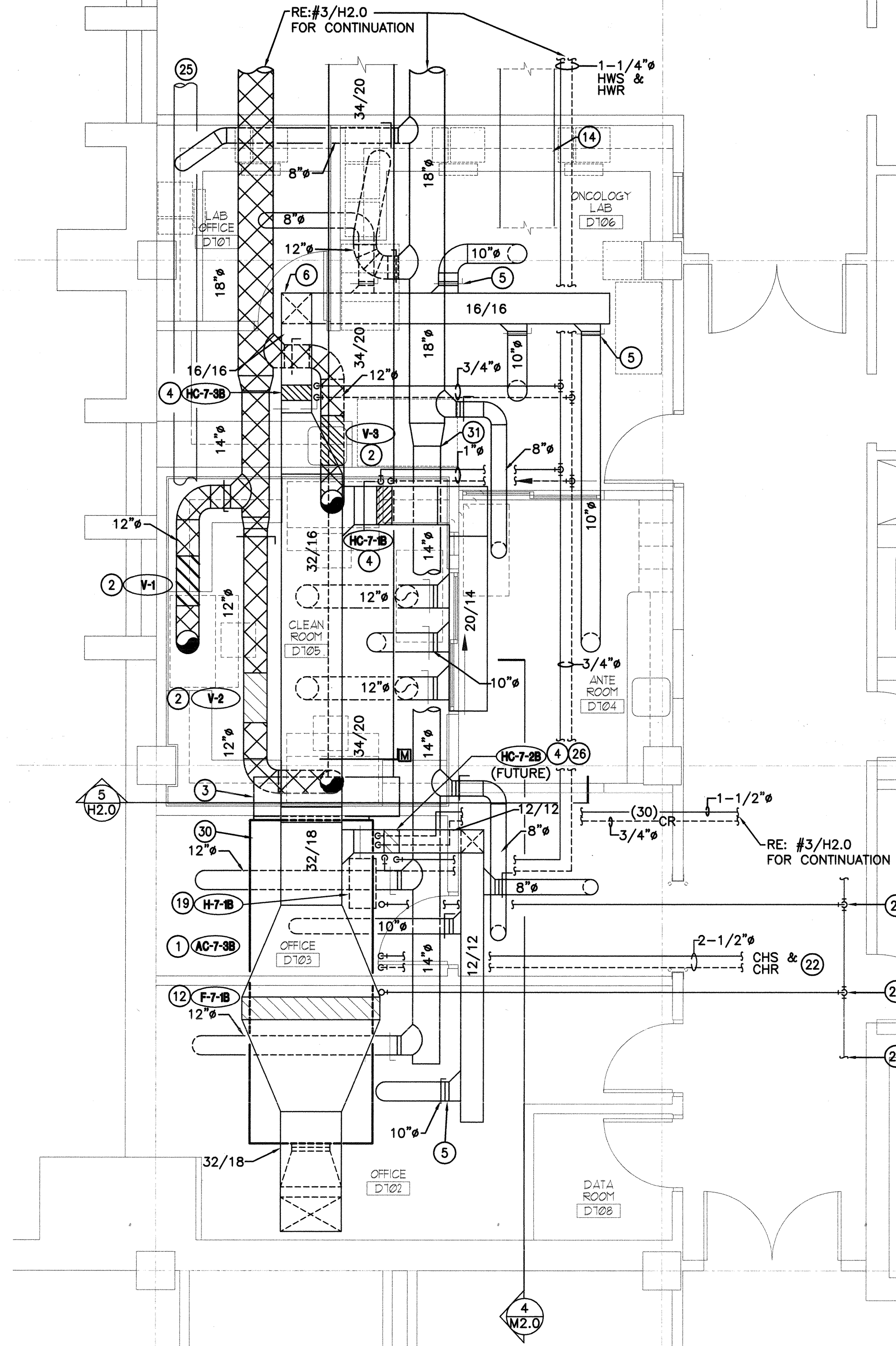
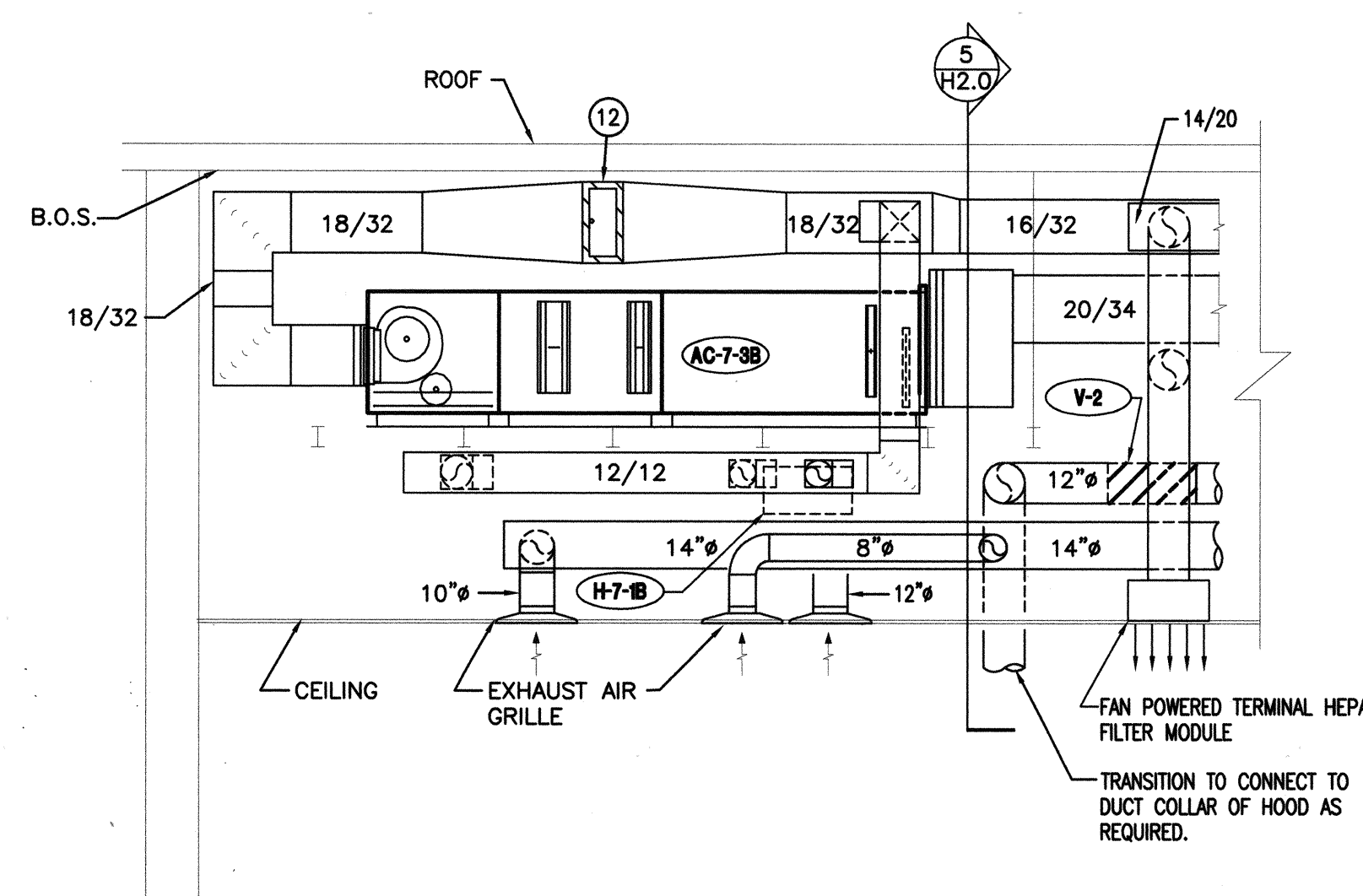


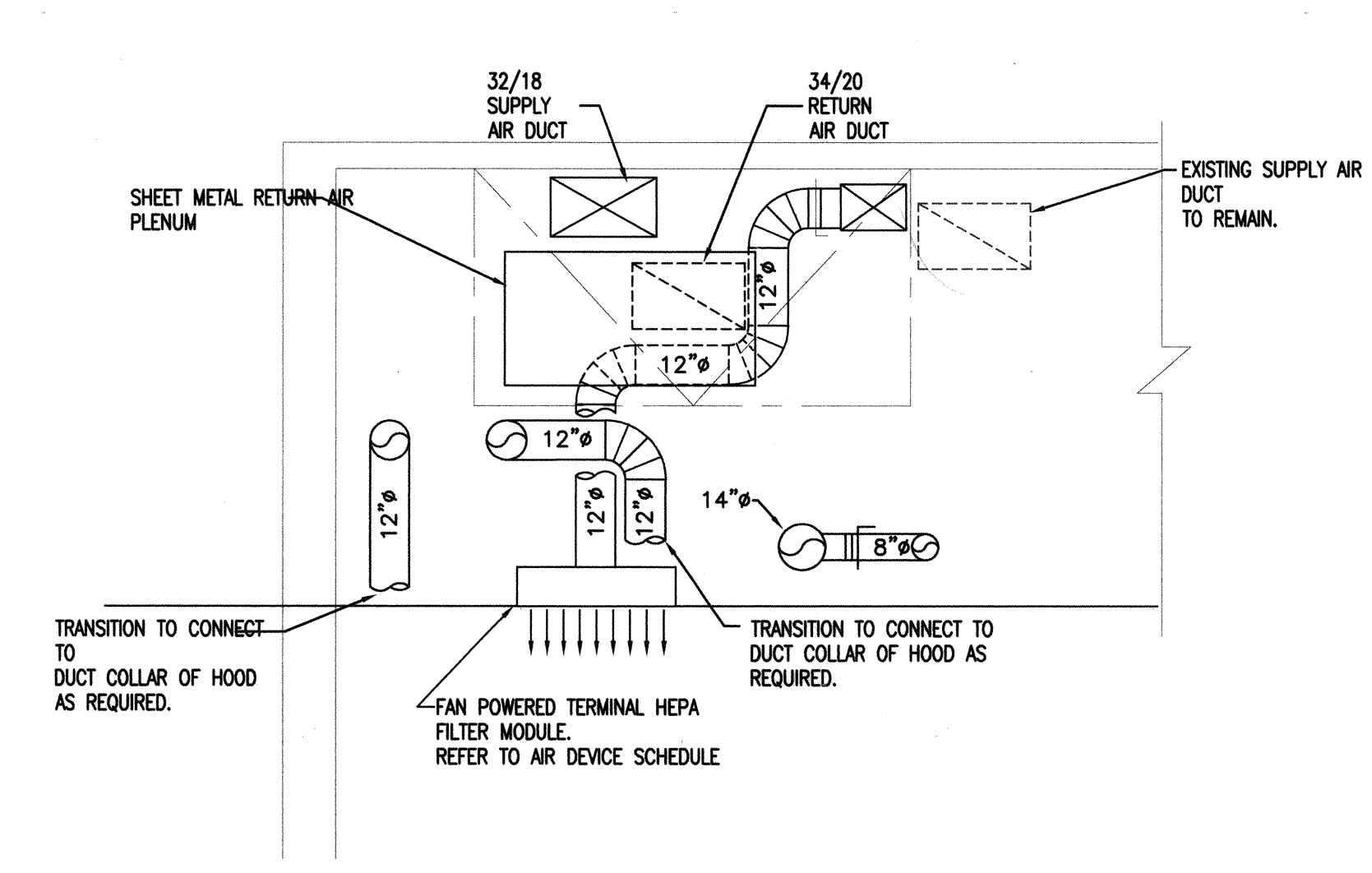
1 1ST FLOOR PLAN - MECHANICAL - NEW WORK
H2.0 SCALE 1/4" = 1'-0"



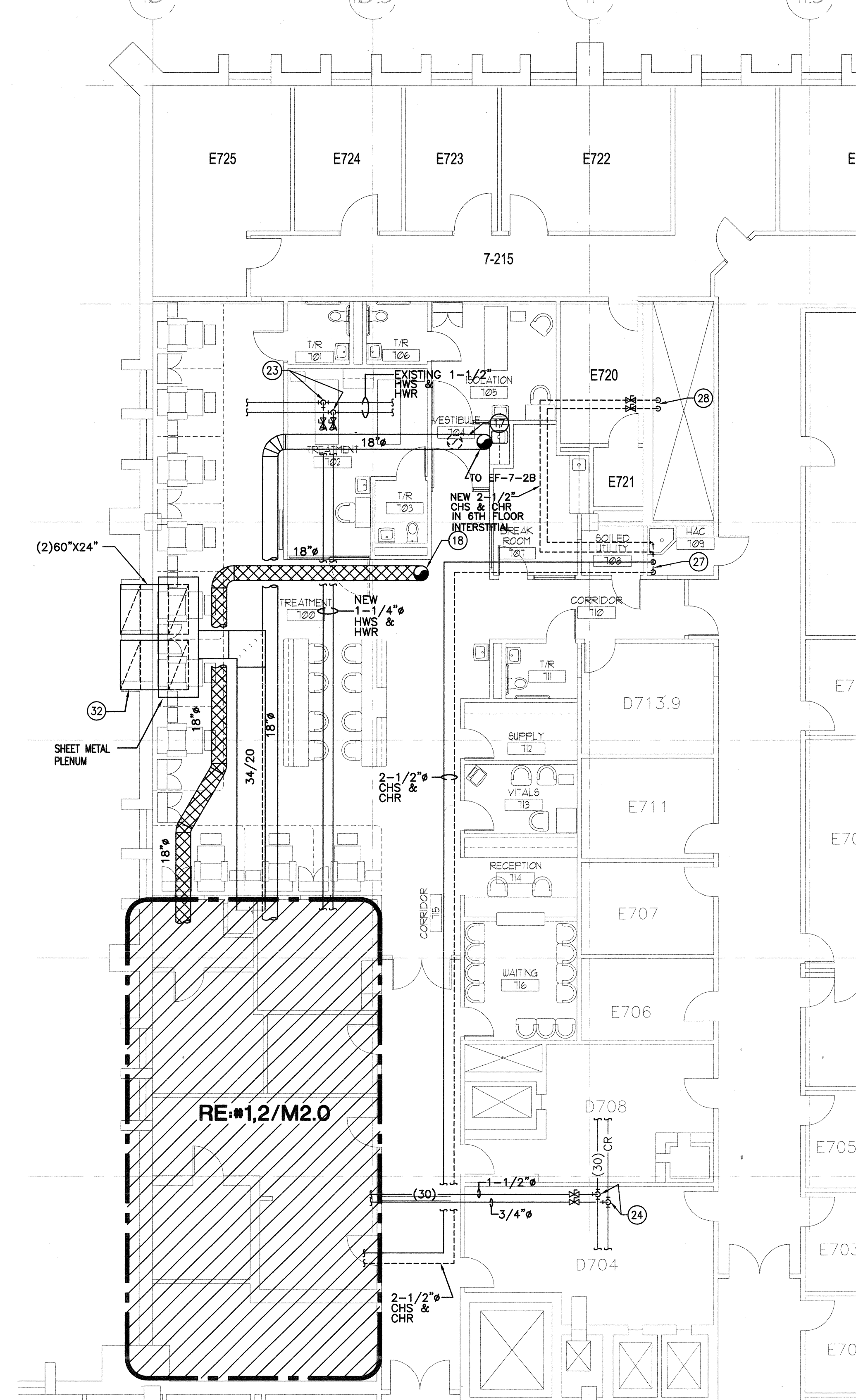
2 1ST FLOOR INTERSTITIAL - MECHANICAL - NEW WORK
H2.0 SCALE 1/4" = 1'-0"



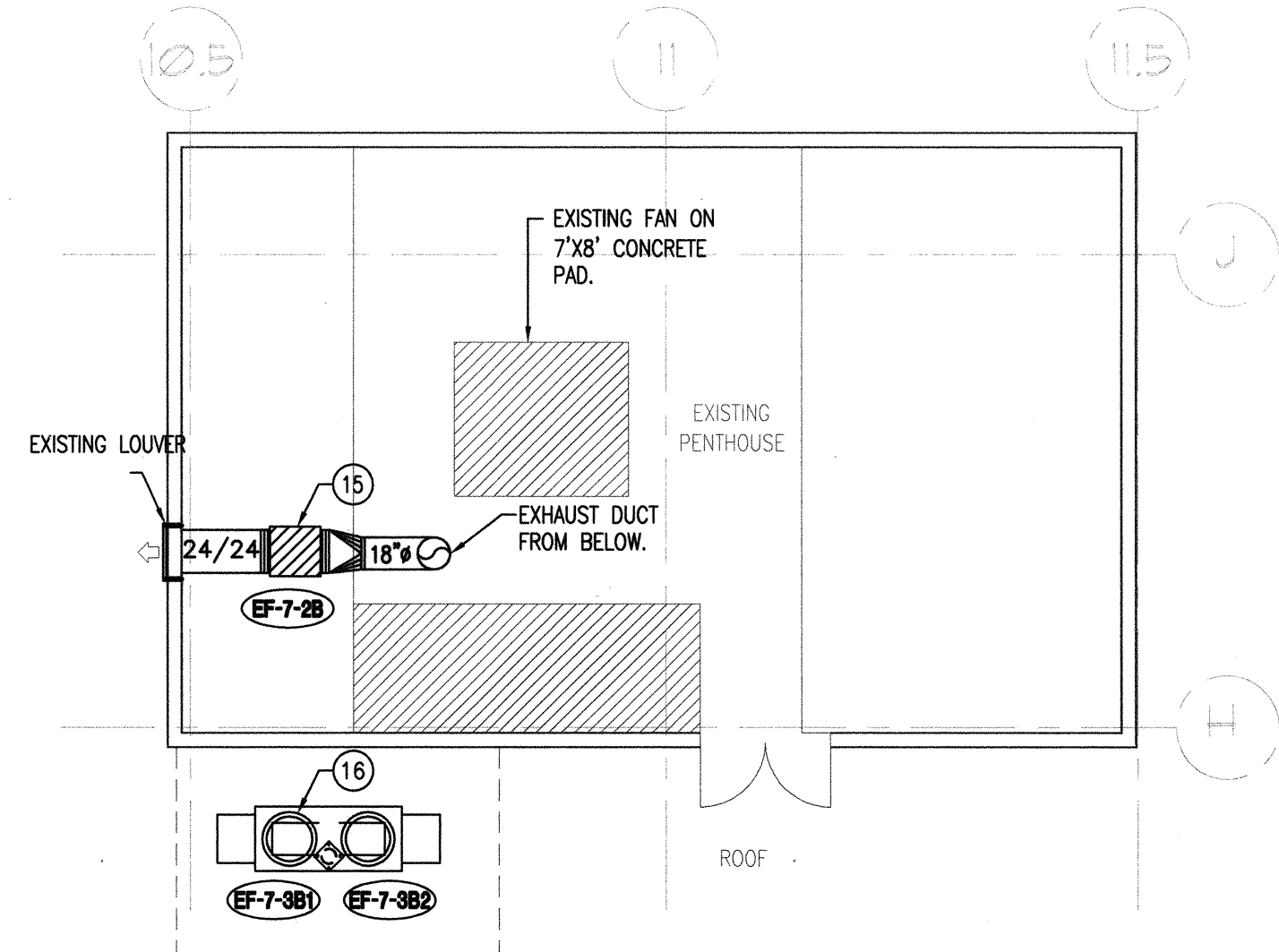
4 SECTION - MECHANICAL - NEW WORK
H2.0 SCALE 1/4" = 1'-0"



5 SECTION - MECHANICAL - NEW WORK
H2.0 SCALE 1/4" = 1'-0"



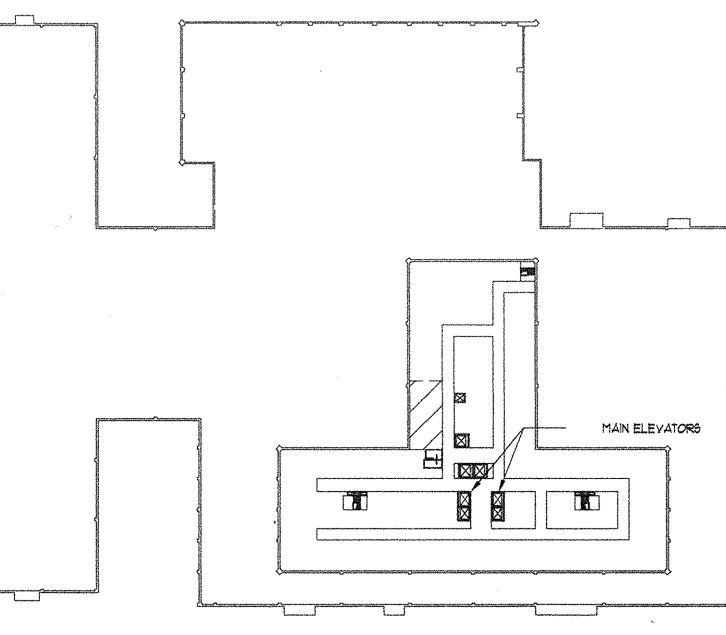
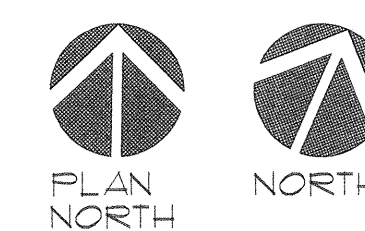
3 1ST FLOOR PLAN - MECHANICAL - NEW WORK
H2.0 SCALE 1/8" = 1'-0"



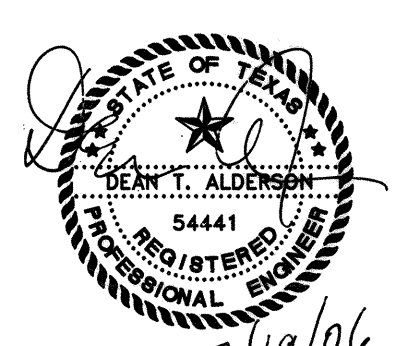
PARTIAL ROOF PLAN - MECHANICAL
NEW WORK
H2.0 SCALE 1/8" = 1'-0"

MECHANICAL KEYED NOTES

- 1 PROVIDE AN AIR HANDLING UNIT AS INDICATED ON SCHEDULE. MOUNT UNIT ON EXISTING STRUCTURE. UNIT SHALL BE SHIPPED IN SECTIONS AND FIELD ASSEMBLY TO ACCOMMODATE INSTALLATION. CONTRACTOR SHALL COORDINATE STRUCTURE CLEARANCES WITH AIR HANDLING UNIT'S MANUFACTURER PRIOR TO ANY CONSTRUCTION.
- 2 PROVIDE AN AIR VALVE AS INDICATED ON SCHEDULE. MOUNT VALVE IN DUCTWORK AS RECOMMENDED BY MANUFACTURER. SET VALVE TO OPEN NOTED ON PLANS.
- 3 CONSTRUCT 76"x42"x24" SHEET METAL PLENUM AT BACK OF AIR HANDLING UNIT. PLENUM SHALL BE INTERNALLY INSULATED ACCORDING TO SPECIFICATIONS. PROVIDE A FLEXIBLE DUCT CONNECTION PRIOR TO CONNECT TO UNIT INLET.
- 4 PROVIDE A HOT WATER COIL AS INDICATED ON SCHEDULE. INSTALL COIL IN DUCTWORK AS RECOMMENDED BY MANUFACTURER. FIELD COORDINATE RIGHT/LEFT CONFIGURATION PRIOR TO ANY CONSTRUCTION.
- 5 PROVIDE A HIGH EFFICIENCY TAKE-OFF FITTING WITH A LOCKING QUADRANT VOLUME DAMPER AT ROUND DUCT CONNECTION WITH MAIN TRUNK. TYPICAL OF ALL RUN-OUTS SERVING SUPPLY DIFFUSERS.
- 6 ROUTE SUPPLY DUCT DOWN AND BENEATH RETURN AIR DUCT AS SHOWN.
- 7 MOUNT TEMPERATURE SENSOR ON WALL AT SAME ELEVATION AS LIGHT SWITCHES. COORDINATE EXACT LOCATION WITH ARCHITECT PRIOR TO INSTALLATION.
- 8 MOUNT ROOM STATIC PRESSURE SENSOR ON CEILING. COORDINATE EXACT LOCATION WITH ARCHITECT PRIOR TO INSTALLATION.
- 9 INSTALL A CRC-RM (CRITICAL ROOM CONTROL ROOM MONITOR) ON WALL. COORDINATE EXACT LOCATION WITH OWNER AND ARCHITECT PRIOR TO INSTALLATION. RE: SPECIFICATIONS.
- 10 MOUNT HUMIDITY SENSOR ON WALL AT SAME ELEVATION AS LIGHT SWITCHES. COORDINATE EXACT LOCATION WITH ARCHITECT PRIOR TO INSTALLATION.
- 11 PROVIDE A FAN POWERED TERMINAL HEPA FILTER MODULE AS INDICATED ON SCHEDULE. PROVIDE DUCT COLLAR AS NOTED ON PLAN. POWER CORD FOR 115V. NEOPRENE-GASKETED "TSR" FILTER PACK AND SOLID STATE SPEED CONTROLLER. INTERLOCK CEILING MODULE WITH AIR HANDLING UNIT.
- 12 PROVIDE A FILTER BANK AS SCHEDULED. SUSPEND FILTER BANK FROM STRUCTURE ABOVE PER MANUFACTURER'S RECOMMENDATIONS.
- 13 PROVIDE RECTANGULAR TO ROUND TRANSITION TO CONNECT TO DUCT COLLAR OF HOOD. FIELD VERIFY DIMENSIONS OF DUCT COLLAR PRIOR TO ANY CONSTRUCTION.
- 14 EXISTING SUPPLY AIR MAIN DUCT TO REMAIN.
- 15 PROVIDE AN INLINE EXHAUST FAN AS INDICATED ON SCHEDULE. SUSPEND FAN FROM EXISTING STRUCTURE AS RECOMMENDED BY MANUFACTURER. PROVIDE FLEXIBLE DUCT CONNECTION AT UNIT INLET AND OUTLET.
- 16 PROVIDE STROBIC AIR TRI-STACK EXHAUST FAN AS INDICATED ON SCHEDULE. MOUNT FAN ON A ROOF CURB PER MANUFACTURER'S RECOMMENDATIONS.
- 17 ROUTE EXHAUST DUCT UP THROUGH FLOOR OF PENTHOUSE. EXHAUST DUCT SHALL OFFSET AS REQUIRED TO CLEAR EXISTING DUCTWORK, PIPING, CONDUITS, STRUCTURE ETC.
- 18 ROUTE EXHAUST DUCT UP THROUGH ROOF. EXHAUST DUCT SHALL OFFSET AS REQUIRED TO CLEAR EXISTING DUCTWORK, PIPING, CONDUITS, STRUCTURE ETC. TRANSITION TO CONNECT TO FAN PLENUM AS REQUIRED.
- 19 PROVIDE A HUMIDIFIER AS SCHEDULED. INSTALL HUMIDIFIER UNDERNEATH AIR HANDLING UNIT AS RECOMMENDED BY MANUFACTURER.
- 20 ROUTE 1-1/4" CONDENSATE DRAIN LINE FROM CONDENSATE DRAIN CONNECTION AT AIR HANDLING UNIT TO THE NEAREST DRAIN. FIELD VERIFY EXACT LOCATION OF EXISTING DRAIN LINE PRIOR TO ANY CONSTRUCTION.
- 21 ROUTE 3/4" CONDENSATE DRAIN LINE FROM CONDENSATE DRAIN CONNECTION AT HUMIDIFIER TO THE NEAREST DRAIN. FIELD VERIFY EXACT LOCATION OF EXISTING DRAIN LINE PRIOR TO ANY CONSTRUCTION.
- 22 CONNECT CHILLED WATER PIPING TO 6" WATER RISER. REFER TO SCHEMATIC ON SHEET H 4.0
- 23 CONNECT NEW HOT WATER PIPING TO EXISTING. FIELD VERIFY EXACT LOCATION OF EXISTING PIPING PRIOR TO ANY CONSTRUCTION.
- 24 CONNECT NEW STEAM AND CONDENSATE PIPING TO EXISTING STEAM AND CONDENSATE LINES. FIELD VERIFY EXACT LOCATION OF EXISTING PIPING PRIOR TO ANY CONSTRUCTION.
- 25 EXISTING ROUND DUCT TO BE ABANDONED.
- 26 HOT WATER COIL (HC-7-2B) AND ALL ASSOCIATED WORK DOWNSTREAM ARE NOT IN THIS CONTRACT.
- 27 CHILLED WATER PIPING DOWN TO 6TH FLOOR INTERSTITIAL SPACE. PROVIDE ALUMINUM JACKETING AT ALL EXPOSED PIPING IN JANITOR'S ROOM. SEAL ALL PIPING FLOOR PENETRATIONS.
- 28 ROUTE CHILLED WATER PIPING IN 6TH FLOOR INTERSTITIAL SPACE TO MECHANICAL CHASE. CONNECT NEW PIPING TO 6" CHILLED WATER RISERS. RE: H2.0. PROVIDE OPENING IN WALL OF MECHANICAL CHASE AS REQUIRED TO ALLOW CONNECTION OF PIPING WITH CHILLED WATER RISERS. SEAL PIPING WALL PENETRATIONS.
- 29 EXISTING DRAIN LINE TO REMAIN. FIELD VERIFY EXACT LOCATION PRIOR TO ANY CONSTRUCTION.
- 30 AIR HANDLING UNIT SHALL BE SHIPPED IN FACTORY SPLITS AT APPROPRIATE POINTS TO ALLOW DELIVERY AND INSTALLATION AT THE INTENDED LOCATION. CONTRACTOR SHALL VERIFY CLEARANCE AVAILABLE BETWEEN EXISTING STRUCTURE PRIOR TO ANY CONSTRUCTION. MODULAR SECTIONS SHALL BE RISE UP THROUGH EXISTING STRUCTURE AND ASSEMBLED IN INTERSTITIAL SPACE.
- 31 ALL EXHAUST DUCT (14") AND ASSOCIATED ROUND TAPS BEYOND THIS POINT ARE NOT PART OF THIS CONTRACT.
- 32 CONNECT OUTSIDE AIR DUCT TO EXISTING GRILLES LOCATED IN EXISTING SLOTT.



"ONCOLOGY PHARMACY" APPROXIMATE AREA OF WORK



Revisions	Date

Alderson & Associates, Inc.
Consulting Engineers
8415 Datapoint Dr.
Suite 725
San Antonio, TX 78229
Phone (210) 614-1110
Fax (210) 615-8549

NOTE:
THE RESIDENT ENGINEER MUST
BE NOTIFIED 24 HOURS IN
ADVANCE OF ANY COMPROMISE IN
THE FIRE SUPPRESSION OR SMOKE
DETECTION SYSTEMS. A COPY OF
THE INTERIM LIFE SAFETY CODE
MEASURES MUST BE OBTAINED AND
FOLLOWED DURING CONSTRUCTION.

**Chesney
Morales ARCHITECTS/PLANNERS
& Associates, Inc.**
4801 Broadway, Suite 250 / San Antonio, Texas 78208 / (210) 828-9481

Approved: Service Chief	Approved: Service Chief
Concur: M & O	Approved: Service Chief
Concur: Bio-Med	Approved: Service Chief
Concur: Safety	Approved: Service Chief
Approved: Service Chief	Approved: Admin. Officer

Drawing Title
MECHANICAL NEW WORK
Approved: Chief of Engineering
Approved: Associate Director

Project Title
ONCOLOGY PHARMACY SEVENTH FLOOR
Building Number
1
Location
AUDIE L. MURPHY MEMORIAL VETERANS HOSPITAL - SAN ANTONIO, TEXAS

Date
JULY 19, 06
Project No.
671-06-103
DRAWING NO.
H 2.0
Dwg. 12 of 21

