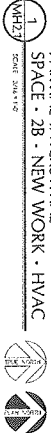


GENERAL NOTES:

1. REFER TO SHEET 1 FOR ROOM SYMBOLS, ABREVIATIONS AND MATERIAL SCHEDULES.
2. PATCH, PAINT, FINISH, AND REPAIR SHALL BE DONE TO MATCH EXISTING CONDITIONS.
3. THE CONTRACTOR SHALL COORDINATE THE INSTALLATION OF THE NEW DUCTWORK AND PIPING WITH THE EXISTING STRUCTURE AND FINISHES TO AVOID DAMAGE TO THE EXISTING STRUCTURE AND FINISHES.
4. THE CONTRACTOR SHALL BE RESPONSIBLE FOR OBTAINING ALL NECESSARY PERMITS AND APPROVALS FROM THE APPROPRIATE AGENCIES.

PARTIAL INTERSTITIAL SPACE - 2B - NEW WORK - HVAC



KEYED NOTES:

1. THE CONTRACTOR SHALL REMOVE THE EXISTING CAVE MARK FROM THE AREA OF THE NEW DUCTWORK. THE CAVE MARK SHALL BE REMOVED TO THE EXISTING FLOOR FINISH.
2. DUCTWORK SHALL BE INSTALLED ABOVE THE EXISTING FLOOR FINISH. THE DUCTWORK SHALL BE SUPPORTED BY HANGERS AND SHALL BE INSULATED TO THE EXISTING INSULATION.
3. HANGERS AND INSULATION SHALL BE INSTALLED TO THE EXISTING STRUCTURE. THE HANGERS SHALL BE INSTALLED TO THE EXISTING STRUCTURE AND SHALL BE LABELED AS SUCH AND EVERY 20' AND THEREAFTER.
4. RELOCATE THE EXISTING 2" FREE SPACE FROM THE EXISTING DUCTWORK TO THE NEW DUCTWORK. THE RELOCATION SHALL BE IN ACCORDANCE WITH THE 1" REQUIREMENTS.
5. RELOCATE THE EXISTING 2" FREE SPACE FROM THE EXISTING DUCTWORK TO THE NEW DUCTWORK. THE RELOCATION SHALL BE IN ACCORDANCE WITH THE 1" REQUIREMENTS.
6. RELOCATE THE EXISTING 2" FREE SPACE FROM THE EXISTING DUCTWORK TO THE NEW DUCTWORK. THE RELOCATION SHALL BE IN ACCORDANCE WITH THE 1" REQUIREMENTS.
7. RELOCATE THE EXISTING 2" FREE SPACE FROM THE EXISTING DUCTWORK TO THE NEW DUCTWORK. THE RELOCATION SHALL BE IN ACCORDANCE WITH THE 1" REQUIREMENTS.
8. RELOCATE THE EXISTING 2" FREE SPACE FROM THE EXISTING DUCTWORK TO THE NEW DUCTWORK. THE RELOCATION SHALL BE IN ACCORDANCE WITH THE 1" REQUIREMENTS.
9. RELOCATE THE EXISTING 2" FREE SPACE FROM THE EXISTING DUCTWORK TO THE NEW DUCTWORK. THE RELOCATION SHALL BE IN ACCORDANCE WITH THE 1" REQUIREMENTS.
10. RELOCATE THE EXISTING 2" FREE SPACE FROM THE EXISTING DUCTWORK TO THE NEW DUCTWORK. THE RELOCATION SHALL BE IN ACCORDANCE WITH THE 1" REQUIREMENTS.

CONSULTANTS:

BVA
BVA CONSULTANTS, INC.
10000 Wilshire Blvd., Suite 1000
Beverly Hills, CA 90212
Tel: 310.274.1100
Fax: 310.274.1101
www.bva.com

CONSTRUCTION DOCUMENTS:



ARCHITECT:

WEST EAST DESIGN GROUP
300 E. Canyon St., Suite 207, San Antonio, Texas 78215-2307
210.590.0755 FAX 210.593.5427
www.west-east.com

PARTIAL INTERSTITIAL SPACE - 2B - NEW WORK - HVAC

APPROVED PROJECT OWNER:

ISOLATION ROOMS FOR 2A AND 2B

DATE: 11 APR 2014
BY: DB
FOR: NM

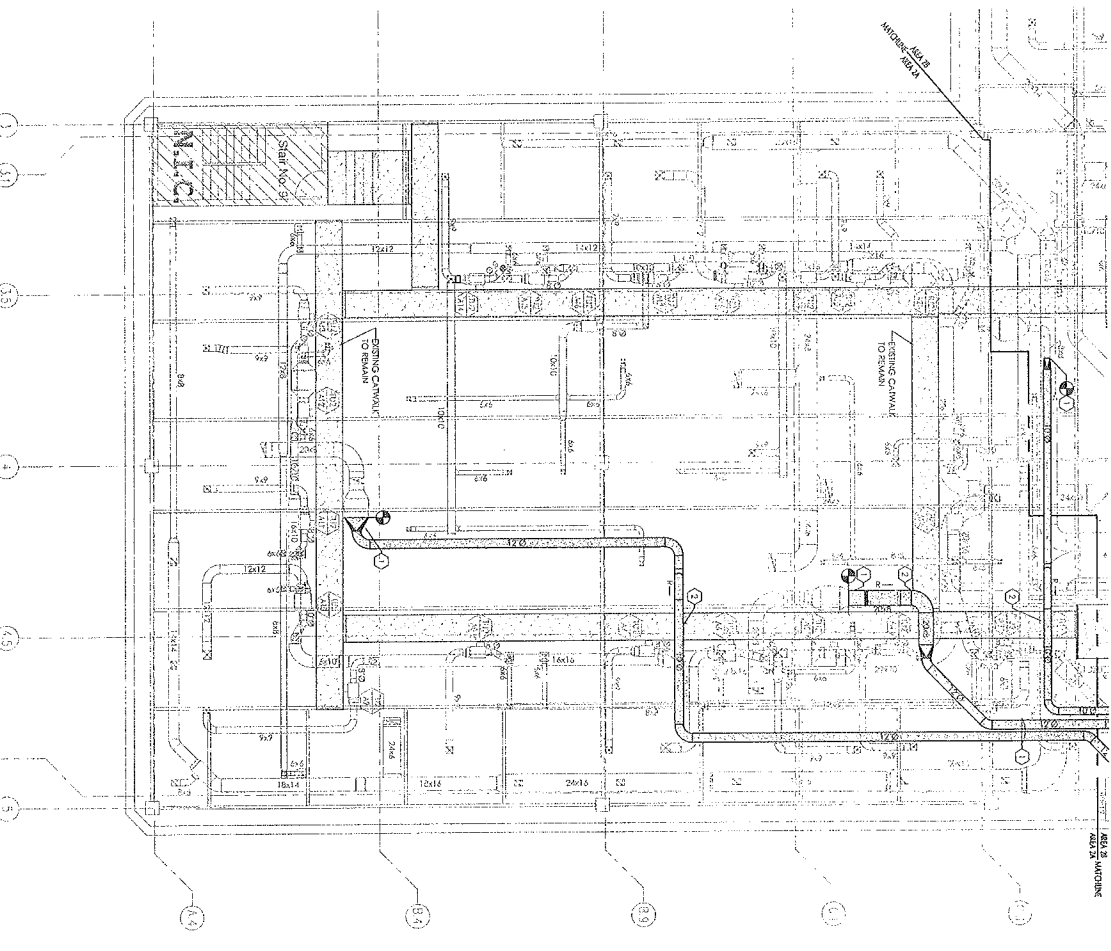
CONSTRUCTION and Facilities Management

PROJECT NUMBER: 677-204
ISSUED FOR: 1
DATE: 11 APR 2014
BY: DB
FOR: NM



CONSULTANTS		CONSTRUCTION DOCUMENTS		ARCHITECT:		PROJECT INFO		CONSTRUCTION and Facilities Management	
BWA BUREAU OF WORK ANALYSIS 1000 15th Street, Suite 1000 San Francisco, CA 94103 Tel: 415.774.1100 Fax: 415.774.1101 www.bwa.com				WESTEAST DESIGN GROUP 300 E. GAYSON ST., Suite 200, San Antonio, Texas 78212-1207 USA Tel: 210.520.0755 Fax: 210.520.0827 www.westdesign.com		PROJECT NAME PARTIAL INTERSTITIAL SPACE - 2A - NEW WORK - HVAC		CONSTRUCTION and Facilities Management	
PROJECT NO. MH22		DATE 11 APR 2014		DRAWN BY DB		CHECKED BY RM		PROJECT NUMBER 671-234	
SHEET NO. 1		SHEET TOTAL 1		SHEET TITLE ISOLATION ROOM FANS FOR 2A AND 2B		SHEET DATE 11 APR 2014		SHEET NUMBER MH22	
SHEET TOTAL 1		SHEET DATE 11 APR 2014		SHEET NUMBER MH22		SHEET TITLE ISOLATION ROOM FANS FOR 2A AND 2B		SHEET DATE 11 APR 2014	

PARTIAL INTERSTITIAL SPACE - 2A - NEW WORK - HVAC



GENERAL NOTES:

1. REFER TO SHEET 100-1 FOR LEGEND SYMBOLS.
2. ALL WORK SHALL BE IN ACCORDANCE WITH THE LATEST EDITIONS OF THE 2012 INTERNATIONAL MECHANICAL AND ELECTRICAL CODE (IMC) AND THE 2012 NATIONAL ELECTRICAL CODE (NEC).
3. THE CONTRACTOR SHALL COORDINATE THE INSTALLATION OF THE NEW DUCTWORK AND PIPING WITH THE EXISTING DUCTWORK AND PIPING. THE CONTRACTOR SHALL BE RESPONSIBLE FOR OBTAINING ALL NECESSARY PERMITS AND APPROVALS FROM THE CITY OF SAN FRANCISCO AND THE CALIFORNIA DEPARTMENT OF INDUSTRIAL RELATIONS (CDIR) PRIOR TO INSTALLATION.

KEYED NOTES:

1. BARELY AND NEW DUCTWORK SHALL BE INSTALLED IN THE EXISTING CAVITY. THE DUCTWORK SHALL BE LABELED AS FOLLOWS: 2A-1, 2A-2, 2A-3, 2A-4, 2A-5, 2A-6, 2A-7, 2A-8, 2A-9, 2A-10, 2A-11, 2A-12, 2A-13, 2A-14, 2A-15, 2A-16, 2A-17, 2A-18, 2A-19, 2A-20, 2A-21, 2A-22, 2A-23, 2A-24, 2A-25, 2A-26, 2A-27, 2A-28, 2A-29, 2A-30, 2A-31, 2A-32, 2A-33, 2A-34, 2A-35, 2A-36, 2A-37, 2A-38, 2A-39, 2A-40, 2A-41, 2A-42, 2A-43, 2A-44, 2A-45, 2A-46, 2A-47, 2A-48, 2A-49, 2A-50, 2A-51, 2A-52, 2A-53, 2A-54, 2A-55, 2A-56, 2A-57, 2A-58, 2A-59, 2A-60, 2A-61, 2A-62, 2A-63, 2A-64, 2A-65, 2A-66, 2A-67, 2A-68, 2A-69, 2A-70, 2A-71, 2A-72, 2A-73, 2A-74, 2A-75, 2A-76, 2A-77, 2A-78, 2A-79, 2A-80, 2A-81, 2A-82, 2A-83, 2A-84, 2A-85, 2A-86, 2A-87, 2A-88, 2A-89, 2A-90, 2A-91, 2A-92, 2A-93, 2A-94, 2A-95, 2A-96, 2A-97, 2A-98, 2A-99, 2A-100, 2A-101, 2A-102, 2A-103, 2A-104, 2A-105, 2A-106, 2A-107, 2A-108, 2A-109, 2A-110, 2A-111, 2A-112, 2A-113, 2A-114, 2A-115, 2A-116, 2A-117, 2A-118, 2A-119, 2A-120, 2A-121, 2A-122, 2A-123, 2A-124, 2A-125, 2A-126, 2A-127, 2A-128, 2A-129, 2A-130, 2A-131, 2A-132, 2A-133, 2A-134, 2A-135, 2A-136, 2A-137, 2A-138, 2A-139, 2A-140, 2A-141, 2A-142, 2A-143, 2A-144, 2A-145, 2A-146, 2A-147, 2A-148, 2A-149, 2A-150, 2A-151, 2A-152, 2A-153, 2A-154, 2A-155, 2A-156, 2A-157, 2A-158, 2A-159, 2A-160, 2A-161, 2A-162, 2A-163, 2A-164, 2A-165, 2A-166, 2A-167, 2A-168, 2A-169, 2A-170, 2A-171, 2A-172, 2A-173, 2A-174, 2A-175, 2A-176, 2A-177, 2A-178, 2A-179, 2A-180, 2A-181, 2A-182, 2A-183, 2A-184, 2A-185, 2A-186, 2A-187, 2A-188, 2A-189, 2A-190, 2A-191, 2A-192, 2A-193, 2A-194, 2A-195, 2A-196, 2A-197, 2A-198, 2A-199, 2A-200, 2A-201, 2A-202, 2A-203, 2A-204, 2A-205, 2A-206, 2A-207, 2A-208, 2A-209, 2A-210, 2A-211, 2A-212, 2A-213, 2A-214, 2A-215, 2A-216, 2A-217, 2A-218, 2A-219, 2A-220, 2A-221, 2A-222, 2A-223, 2A-224, 2A-225, 2A-226, 2A-227, 2A-228, 2A-229, 2A-230, 2A-231, 2A-232, 2A-233, 2A-234, 2A-235, 2A-236, 2A-237, 2A-238, 2A-239, 2A-240, 2A-241, 2A-242, 2A-243, 2A-244, 2A-245, 2A-246, 2A-247, 2A-248, 2A-249, 2A-250, 2A-251, 2A-252, 2A-253, 2A-254, 2A-255, 2A-256, 2A-257, 2A-258, 2A-259, 2A-260, 2A-261, 2A-262, 2A-263, 2A-264, 2A-265, 2A-266, 2A-267, 2A-268, 2A-269, 2A-270, 2A-271, 2A-272, 2A-273, 2A-274, 2A-275, 2A-276, 2A-277, 2A-278, 2A-279, 2A-280, 2A-281, 2A-282, 2A-283, 2A-284, 2A-285, 2A-286, 2A-287, 2A-288, 2A-289, 2A-290, 2A-291, 2A-292, 2A-293, 2A-294, 2A-295, 2A-296, 2A-297, 2A-298, 2A-299, 2A-300, 2A-301, 2A-302, 2A-303, 2A-304, 2A-305, 2A-306, 2A-307, 2A-308, 2A-309, 2A-310, 2A-311, 2A-312, 2A-313, 2A-314, 2A-315, 2A-316, 2A-317, 2A-318, 2A-319, 2A-320, 2A-321, 2A-322, 2A-323, 2A-324, 2A-325, 2A-326, 2A-327, 2A-328, 2A-329, 2A-330, 2A-331, 2A-332, 2A-333, 2A-334, 2A-335, 2A-336, 2A-337, 2A-338, 2A-339, 2A-340, 2A-341, 2A-342, 2A-343, 2A-344, 2A-345, 2A-346, 2A-347, 2A-348, 2A-349, 2A-350, 2A-351, 2A-352, 2A-353, 2A-354, 2A-355, 2A-356, 2A-357, 2A-358, 2A-359, 2A-360, 2A-361, 2A-362, 2A-363, 2A-364, 2A-365, 2A-366, 2A-367, 2A-368, 2A-369, 2A-370, 2A-371, 2A-372, 2A-373, 2A-374, 2A-375, 2A-376, 2A-377, 2A-378, 2A-379, 2A-380, 2A-381, 2A-382, 2A-383, 2A-384, 2A-385, 2A-386, 2A-387, 2A-388, 2A-389, 2A-390, 2A-391, 2A-392, 2A-393, 2A-394, 2A-395, 2A-396, 2A-397, 2A-398, 2A-399, 2A-400, 2A-401, 2A-402, 2A-403, 2A-404, 2A-405, 2A-406, 2A-407, 2A-408, 2A-409, 2A-410, 2A-411, 2A-412, 2A-413, 2A-414, 2A-415, 2A-416, 2A-417, 2A-418, 2A-419, 2A-420, 2A-421, 2A-422, 2A-423, 2A-424, 2A-425, 2A-426, 2A-427, 2A-428, 2A-429, 2A-430, 2A-431, 2A-432, 2A-433, 2A-434, 2A-435, 2A-436, 2A-437, 2A-438, 2A-439, 2A-440, 2A-441, 2A-442, 2A-443, 2A-444, 2A-445, 2A-446, 2A-447, 2A-448, 2A-449, 2A-450, 2A-451, 2A-452, 2A-453, 2A-454, 2A-455, 2A-456, 2A-457, 2A-458, 2A-459, 2A-460, 2A-461, 2A-462, 2A-463, 2A-464, 2A-465, 2A-466, 2A-467, 2A-468, 2A-469, 2A-470, 2A-471, 2A-472, 2A-473, 2A-474, 2A-475, 2A-476, 2A-477, 2A-478, 2A-479, 2A-480, 2A-481, 2A-482, 2A-483, 2A-484, 2A-485, 2A-486, 2A-487, 2A-488, 2A-489, 2A-490, 2A-491, 2A-492, 2A-493, 2A-494, 2A-495, 2A-496, 2A-497, 2A-498, 2A-499, 2A-500, 2A-501, 2A-502, 2A-503, 2A-504, 2A-505, 2A-506, 2A-507, 2A-508, 2A-509, 2A-510, 2A-511, 2A-512, 2A-513, 2A-514, 2A-515, 2A-516, 2A-517, 2A-518, 2A-519, 2A-520, 2A-521, 2A-522, 2A-523, 2A-524, 2A-525, 2A-526, 2A-527, 2A-528, 2A-529, 2A-530, 2A-531, 2A-532, 2A-533, 2A-534, 2A-535, 2A-536, 2A-537, 2A-538, 2A-539, 2A-540, 2A-541, 2A-542, 2A-543, 2A-544, 2A-545, 2A-546, 2A-547, 2A-548, 2A-549, 2A-550, 2A-551, 2A-552, 2A-553, 2A-554, 2A-555, 2A-556, 2A-557, 2A-558, 2A-559, 2A-560, 2A-561, 2A-562, 2A-563, 2A-564, 2A-565, 2A-566, 2A-567, 2A-568, 2A-569, 2A-570, 2A-571, 2A-572, 2A-573, 2A-574, 2A-575, 2A-576, 2A-577, 2A-578, 2A-579, 2A-580, 2A-581, 2A-582, 2A-583, 2A-584, 2A-585, 2A-586, 2A-587, 2A-588, 2A-589, 2A-590, 2A-591, 2A-592, 2A-593, 2A-594, 2A-595, 2A-596, 2A-597, 2A-598, 2A-599, 2A-600, 2A-601, 2A-602, 2A-603, 2A-604, 2A-605, 2A-606, 2A-607, 2A-608, 2A-609, 2A-610, 2A-611, 2A-612, 2A-613, 2A-614, 2A-615, 2A-616, 2A-617, 2A-618, 2A-619, 2A-620, 2A-621, 2A-622, 2A-623, 2A-624, 2A-625, 2A-626, 2A-627, 2A-628, 2A-629, 2A-630, 2A-631, 2A-632, 2A-633, 2A-634, 2A-635, 2A-636, 2A-637, 2A-638, 2A-639, 2A-640, 2A-641, 2A-642, 2A-643, 2A-644, 2A-645, 2A-646, 2A-647, 2A-648, 2A-649, 2A-650, 2A-651, 2A-652, 2A-653, 2A-654, 2A-655, 2A-656, 2A-657, 2A-658, 2A-659, 2A-660, 2A-661, 2A-662, 2A-663, 2A-664, 2A-665, 2A-666, 2A-667, 2A-668, 2A-669, 2A-670, 2A-671, 2A-672, 2A-673, 2A-674, 2A-675, 2A-676, 2A-677, 2A-678, 2A-679, 2A-680, 2A-681, 2A-682, 2A-683, 2A-684, 2A-685, 2A-686, 2A-687, 2A-688, 2A-689, 2A-690, 2A-691, 2A-692, 2A-693, 2A-694, 2A-695, 2A-696, 2A-697, 2A-698, 2A-699, 2A-700, 2A-701, 2A-702, 2A-703, 2A-704, 2A-705, 2A-706, 2A-707, 2A-708, 2A-709, 2A-710, 2A-711, 2A-712, 2A-713, 2A-714, 2A-715, 2A-716, 2A-717, 2A-718, 2A-719, 2A-720, 2A-721, 2A-722, 2A-723, 2A-724, 2A-725, 2A-726, 2A-727, 2A-728, 2A-729, 2A-730, 2A-731, 2A-732, 2A-733, 2A-734, 2A-735, 2A-736, 2A-737, 2A-738, 2A-739, 2A-740, 2A-741, 2A-742, 2A-743, 2A-744, 2A-745, 2A-746, 2A-747, 2A-748, 2A-749, 2A-750, 2A-751, 2A-752, 2A-753, 2A-754, 2A-755, 2A-756, 2A-757, 2A-758, 2A-759, 2A-760, 2A-761, 2A-762, 2A-763, 2A-764, 2A-765, 2A-766, 2A-767, 2A-768, 2A-769, 2A-770, 2A-771, 2A-772, 2A-773, 2A-774, 2A-775, 2A-776, 2A-777, 2A-778, 2A-779, 2A-780, 2A-781, 2A-782, 2A-783, 2A-784, 2A-785, 2A-786, 2A-787, 2A-788, 2A-789, 2A-790, 2A-791, 2A-792, 2A-793, 2A-794, 2A-795, 2A-796, 2A-797, 2A-798, 2A-799, 2A-800, 2A-801, 2A-802, 2A-803, 2A-804, 2A-805, 2A-806, 2A-807, 2A-808, 2A-809, 2A-810, 2A-811, 2A-812, 2A-813, 2A-814, 2A-815, 2A-816, 2A-817, 2A-818, 2A-819, 2A-820, 2A-821, 2A-822, 2A-823, 2A-824, 2A-825, 2A-826, 2A-827, 2A-828, 2A-829, 2A-830, 2A-831, 2A-832, 2A-833, 2A-834, 2A-835, 2A-836, 2A-837, 2A-838, 2A-839, 2A-840, 2A-841, 2A-842, 2A-843, 2A-844, 2A-845, 2A-846, 2A-847, 2A-848, 2A-849, 2A-850, 2A-851, 2A-852, 2A-853, 2A-854, 2A-855, 2A-856, 2A-857, 2A-858, 2A-859, 2A-860, 2A-861, 2A-862, 2A-863, 2A-864, 2A-865, 2A-866, 2A-867, 2A-868, 2A-869, 2A-870, 2A-871, 2A-872, 2A-873, 2A-874, 2A-875, 2A-876, 2A-877, 2A-878, 2A-879, 2A-880, 2A-881, 2A-882, 2A-883, 2A-884, 2A-885, 2A-886, 2A-887, 2A-888, 2A-889, 2A-890, 2A-891, 2A-892, 2A-893, 2A-894, 2A-895, 2A-896, 2A-897, 2A-898, 2A-899, 2A-900, 2A-901, 2A-902, 2A-903, 2A-904, 2A-905, 2A-906, 2A-907, 2A-908, 2A-909, 2A-910, 2A-911, 2A-912, 2A-913, 2A-914, 2A-915, 2A-916, 2A-917, 2A-918, 2A-919, 2A-920, 2A-921, 2A-922, 2A-923, 2A-924, 2A-925, 2A-926, 2A-927, 2A-928, 2A-929, 2A-930, 2A-931, 2A-932, 2A-933, 2A-934, 2A-935, 2A-936, 2A-937, 2A-938, 2A-939, 2A-940, 2A-941, 2A-942, 2A-943, 2A-944, 2A-945, 2A-946, 2A-947, 2A-948, 2A-949, 2A-950, 2A-951, 2A-952, 2A-953, 2A-954, 2A-955, 2A-956, 2A-957, 2A-958, 2A-959, 2A-960, 2A-961, 2A-962, 2A-963, 2A-964, 2A-965, 2A-966, 2A-967, 2A-968, 2A-969, 2A-970, 2A-971, 2A-972, 2A-973, 2A-974, 2A-975, 2A-976, 2A-977, 2A-978, 2A-979, 2A-980, 2A-981, 2A-982, 2A-983, 2A-984, 2A-985, 2A-986, 2A-987, 2A-988, 2A-989, 2A-990, 2A-991, 2A-992, 2A-993, 2A-994, 2A-995, 2A-996, 2A-997, 2A-998, 2A-999, 2A-1000, 2A-1001, 2A-1002, 2A-1003, 2A-1004, 2A-1005, 2A-1006, 2A-1007, 2A-1008, 2A-1009, 2A-1010, 2A-1011, 2A-1012, 2A-1013, 2A-1014, 2A-1015, 2A-1016, 2A-1017, 2A-1018, 2A-1019, 2A-1020, 2A-1021, 2A-1022, 2A-1023, 2A-1024, 2A-1025, 2A-1026, 2A-1027, 2A-1028, 2A-1029, 2A-1030, 2A-1031, 2A-1032, 2A-1033, 2A-1034, 2A-1035, 2A-1036, 2A-1037, 2A-1038, 2A-1039, 2A-1040, 2A-1041, 2A-1042, 2A-1043, 2A-1044, 2A-1045, 2A-1046, 2A-1047, 2A-1048, 2A-1049, 2A-1050, 2A-1051, 2A-1052, 2A-1053, 2A-1054, 2A-1055, 2A-1056, 2A-1057, 2A-1058, 2A-1059, 2A-1060, 2A-1061, 2A-1062, 2A-1063, 2A-1064, 2A-1065, 2A-1066, 2A-1067, 2A-1068, 2A-1069, 2A-1070, 2A-1071, 2A-1072, 2A-1073, 2A-1074, 2A-1075, 2A-1076, 2A-1077, 2A-1078, 2A-1079, 2A-1080, 2A-1081, 2A-1082, 2A-1083, 2A-1084, 2A-1085, 2A-1086, 2A-1087, 2A-1088, 2A-1089, 2A-1090, 2A-1091, 2A-1092, 2A-1093, 2A-1094, 2A-1095, 2A-1096, 2A-1097, 2A-1098, 2A-1099, 2A-1100, 2A-1101, 2A-1102, 2A-1103, 2A-1104, 2A-1105, 2A-1106, 2A-1107, 2A-1108, 2A-1109, 2A-1110, 2A-1111, 2A-1112, 2A-1113, 2A-1114, 2A-1115, 2A-1116, 2A-1117, 2A-1118, 2A-1119, 2A-1120, 2A-1121, 2A-1122, 2A-1123, 2A-1124, 2A-1125, 2A-1126, 2A-1127, 2A-1128, 2A-1129, 2A-1130, 2A-1131, 2A-1132, 2A-1133, 2A-1134, 2A-1135, 2A-1136, 2A-1137, 2A-1138, 2A-1139, 2A-1140, 2A-1141, 2A-1142, 2A-1143, 2A-1144, 2A-1145, 2A-1146, 2A-1147, 2A-1148, 2A-1149, 2A-1150, 2A-1151, 2A-1152, 2A-1153, 2A-1154, 2A-1155, 2A-1156, 2A-1157, 2A-1158, 2A-1159, 2A-1160, 2A-1161, 2A-1162, 2A-1163, 2A-1164, 2A-1165, 2A-1166, 2A-1167, 2A-1168, 2A-1169, 2A-1170, 2A-1171, 2A-1172, 2A-1173, 2A-1174, 2A-1175, 2A-1176, 2A-1177, 2A-1178, 2A-1179, 2A-1180, 2A-1181, 2A-1182, 2A-1183, 2A-1184, 2A-1185, 2A-1186, 2A-1187, 2A-1188, 2A-1189, 2A-1190, 2A-1191, 2A-1192, 2A-1193, 2A-1194, 2A-1195, 2A-1196, 2A-1197, 2A-1198, 2A-1199, 2A-1200, 2A-1201, 2A-1202, 2A-1203, 2A-1204, 2A-1205, 2A-1206, 2A-1207, 2A-1208, 2A-1209, 2A-1210, 2A-1211, 2A-1212, 2A-1213, 2A-1214, 2A-1215, 2A-1216, 2A-1217, 2A-1218, 2A-1219, 2A-1220, 2A-1221, 2A-1222, 2A-1223, 2A-1224, 2A-1225, 2A-1226, 2A-1227, 2A-1228, 2A-1229, 2A-1230, 2A-1231, 2A-1232, 2A-1233, 2A-1234, 2A-1235, 2A-1236, 2A-1237, 2A-1238, 2A-1239, 2A-1240, 2A-1241, 2A-1242, 2A-1243, 2A-1244, 2A-1245, 2A-1246, 2A-1247, 2A-1248, 2A-1249, 2A-1250, 2A-1251, 2A-1252, 2A-1253, 2A-1254, 2A-1255, 2A-1256, 2A-1257, 2A-1258, 2A-1259, 2A-1260, 2A-1261, 2A-1262, 2A-1263, 2A-1264, 2A-1265, 2A-1266, 2A-1267, 2A-1268, 2A-1269, 2A-1270, 2A-1271, 2A-1272, 2A-1273, 2A-1274, 2A-1275, 2A-1276, 2A-1277, 2A-1278, 2A-1279, 2A-1280, 2A-1281, 2A-1282, 2A-1283, 2A-1284, 2A-1285, 2A-1286, 2A-1287, 2A-1288, 2A-1289, 2A-1290, 2A-1291, 2A-1292, 2A-1293, 2A-1294, 2A-1295, 2A-1296, 2A-1297, 2A-1298, 2A-1299, 2A-1300, 2A-1301, 2A-1302, 2A-1303, 2A-1304, 2A-1305, 2A-1306, 2A-1307, 2A-1308, 2A-1309, 2A-1310, 2A-1311, 2A-1312, 2