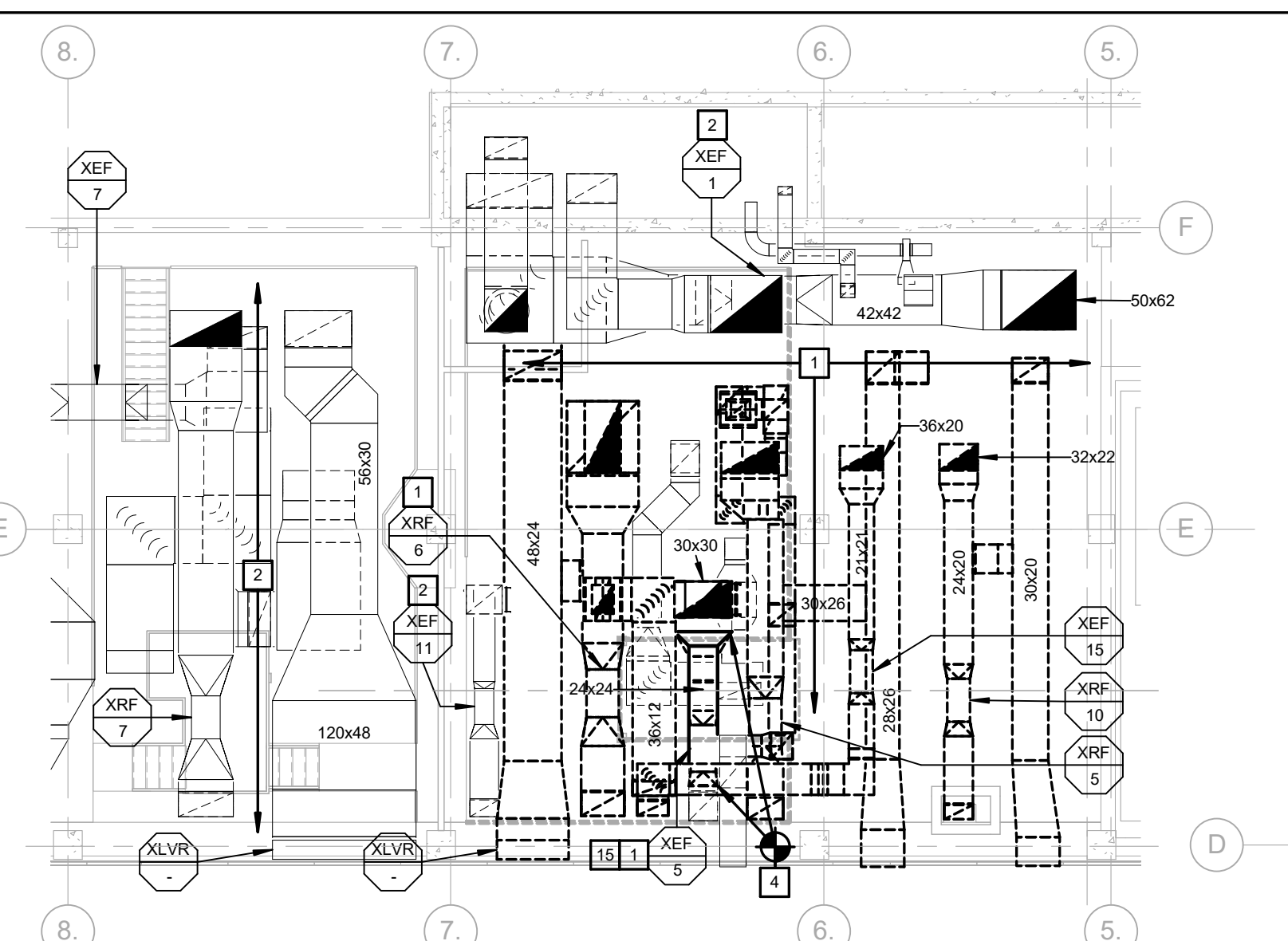
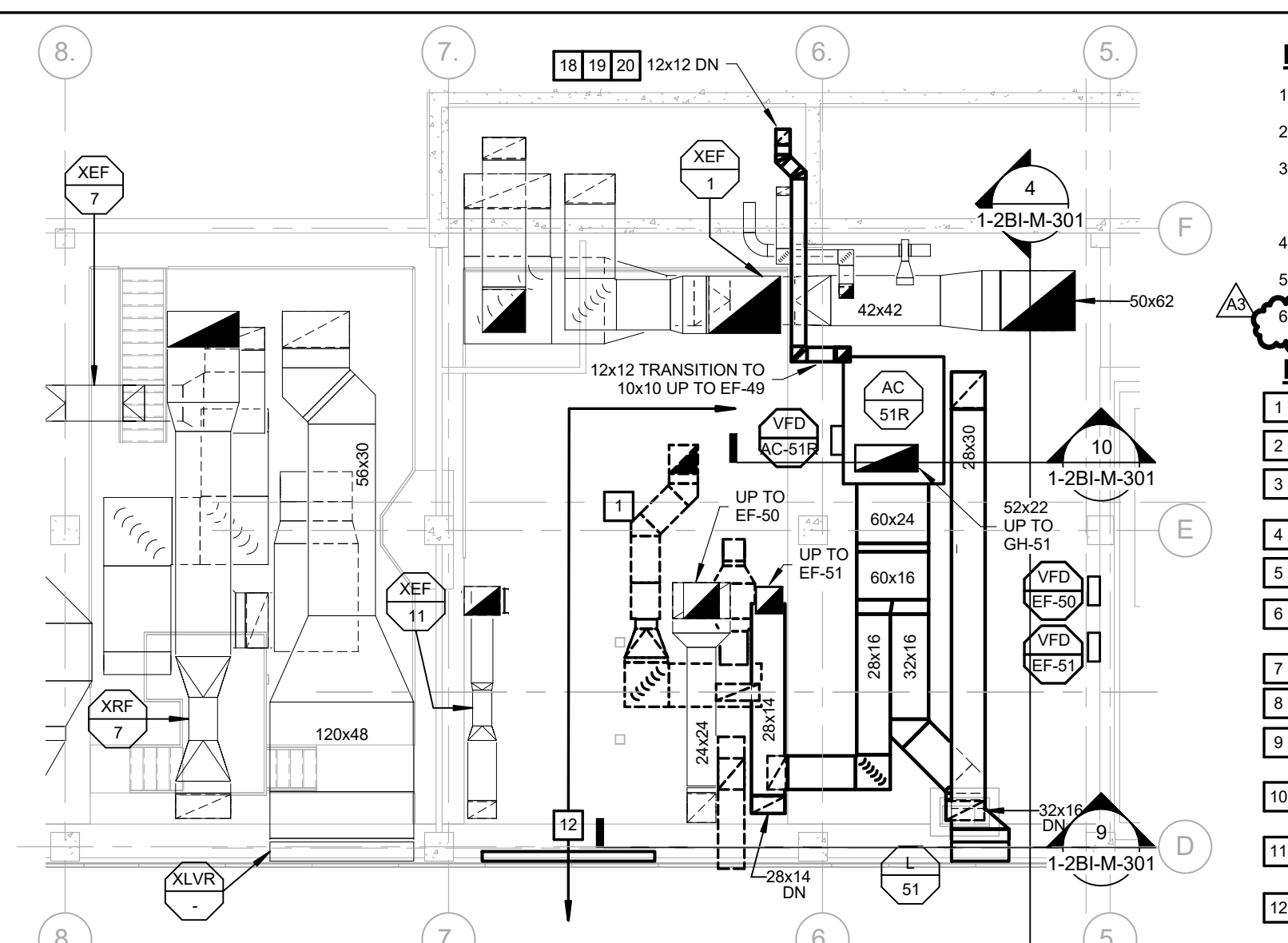


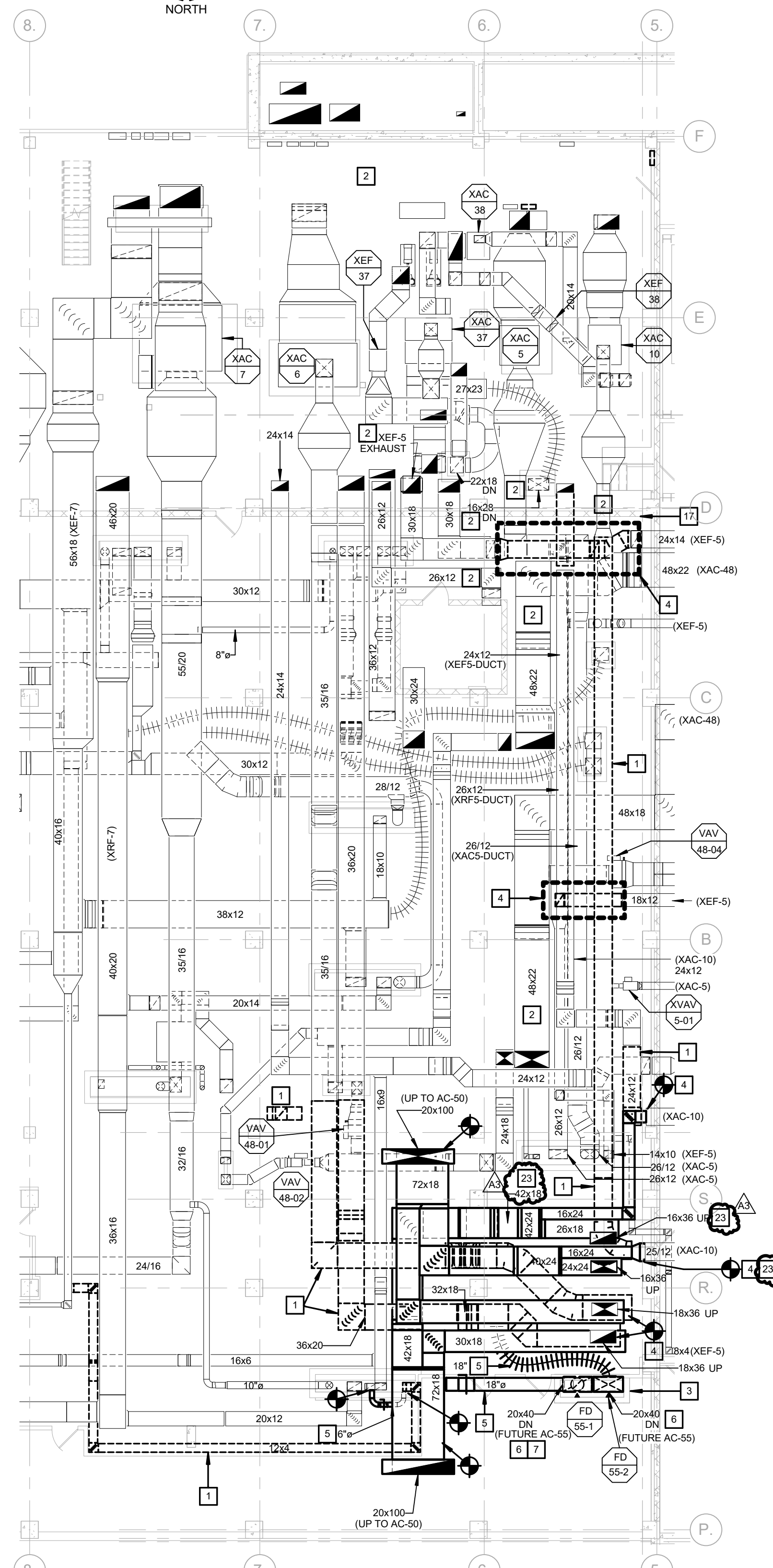
MECHANICAL - 5TH FLOOR MEZZANINE DUCTWORK PLAN - M0
3/32" = 1'-0"
NORTH



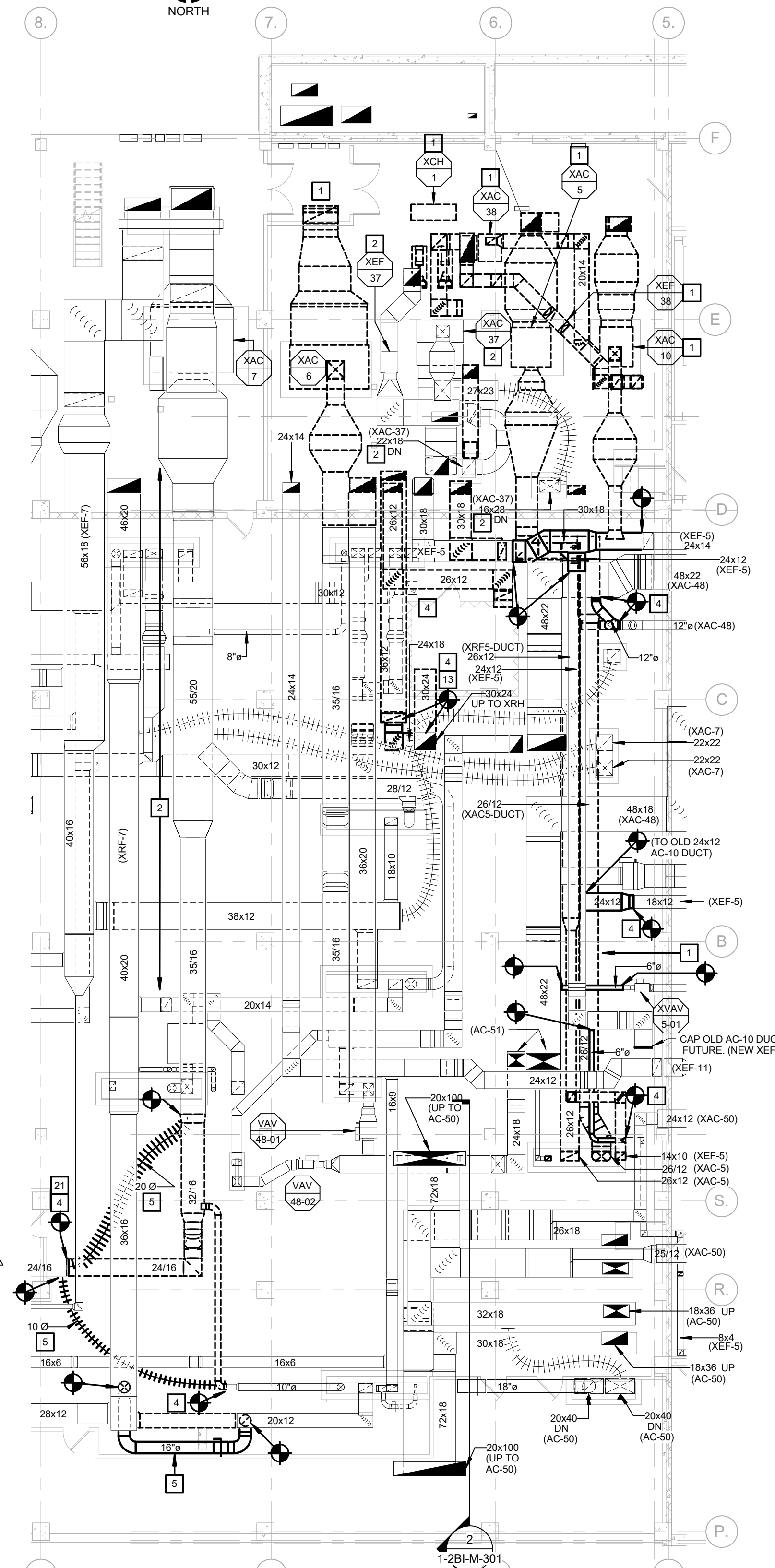
MECHANICAL - 5TH FLOOR MEZZANINE DUCTWORK PLAN - M1
3/32" = 1'-0"
NORTH



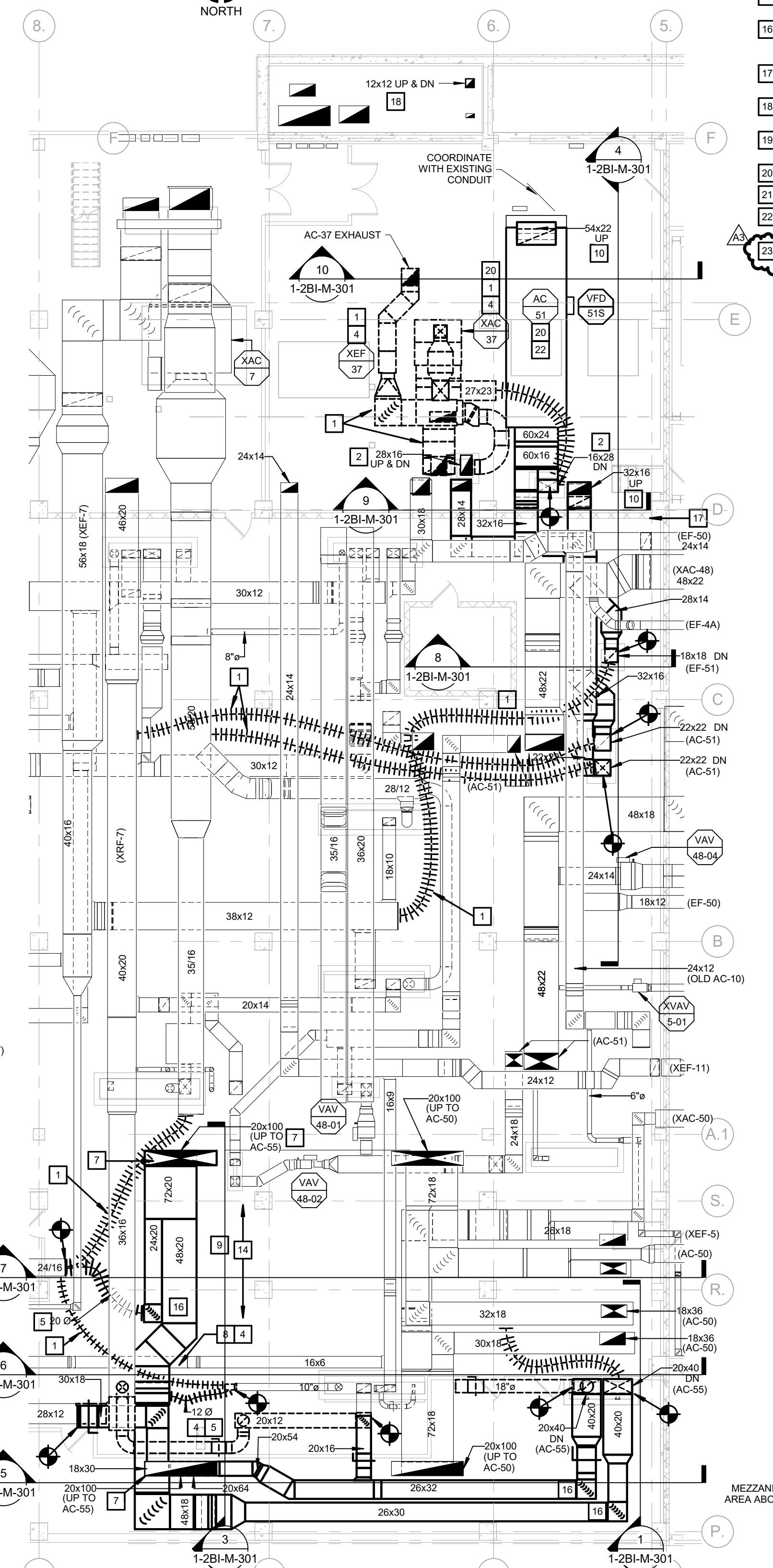
MECHANICAL - 5TH FLOOR MEZZANINE DUCTWORK PLAN - M2
3/32" = 1'-0"
NORTH



MECHANICAL 5TH FLOOR INTERSTITIAL DUCTWORK PLAN - M0
3/32" = 1'-0"
NORTH



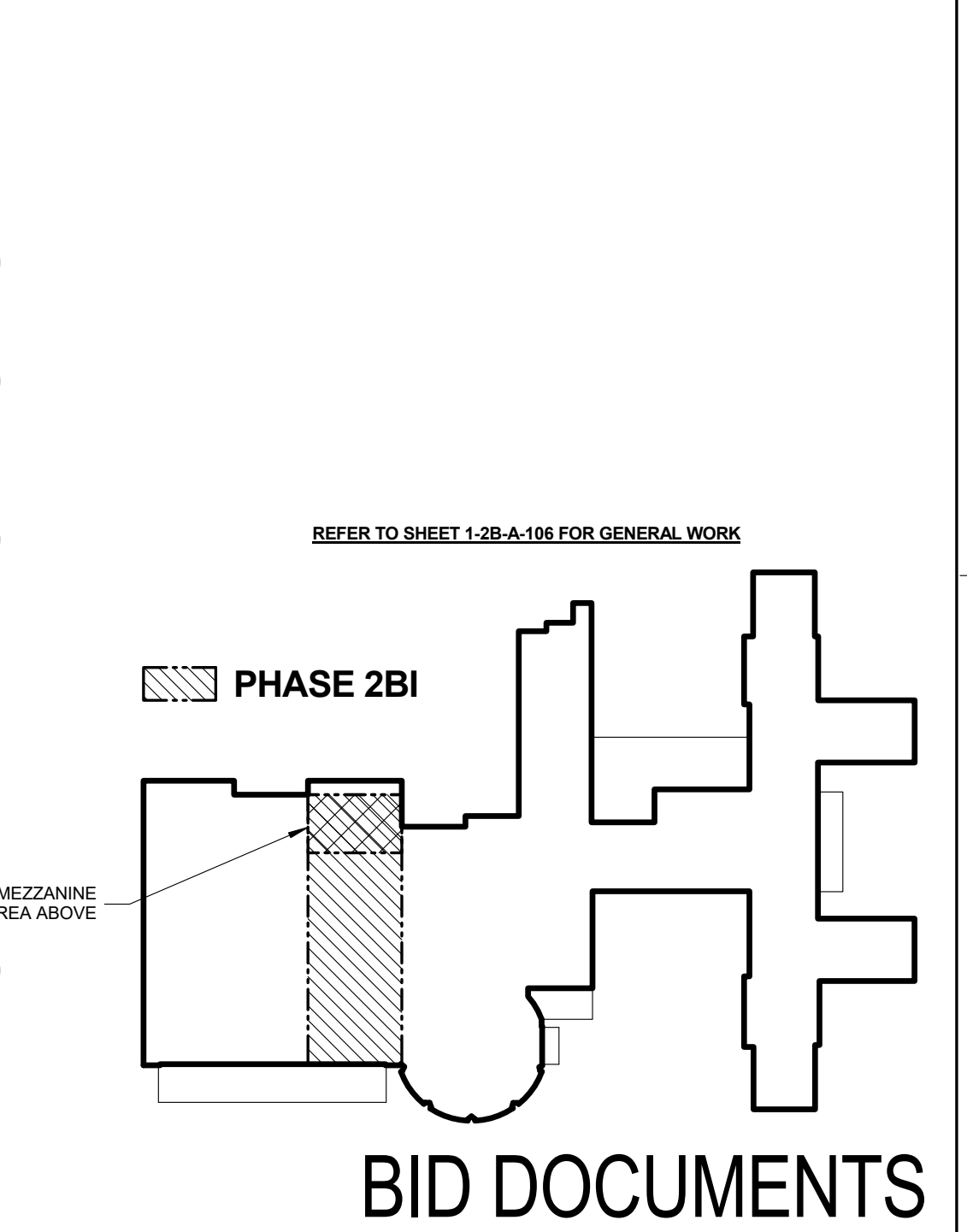
MECHANICAL 5TH FLOOR INTERSTITIAL DUCTWORK PLAN - M1
3/32" = 1'-0"
NORTH



MECHANICAL 5TH FLOOR INTERSTITIAL DUCTWORK PLAN - M2
3/32" = 1'-0"
NORTH

- MECHANICAL GENERAL NOTES:**
- SEE SHEET 1-2B1-M-001 FOR MECHANICAL GENERAL NOTES.
 - SHUT-DOWNS TO BE DONE AFTER HOURS OR WEEKENDS. COORDINATE WITH VA COR.
 - PROPER COMPLIANCE WITH THE OSHA HEXAVALENT CHROMIUM STANDARD 1926.1126 SHALL BE REQUIRED FOR ALL BURNING AND CUTTING ACTIVITIES ASSOCIATED WITH THE REMOVAL OF ANY STAINLESS STEEL BUILDING MATERIALS.
 - ALL TEMPORARY DUCTWORK SHALL BE RIGID. FLEXIBLE DUCT IS NOT ALLOWED.
 - SEE SHEET 1-2B1-M-003 FOR FLOW SCHEMATICS.
 - REFER TO SHEET 1-2B1-M-106 FOR GENERAL CONDITIONS WORK. COORDINATE WITH BOTH 1-2B1-M-001 AND GENERAL CONTRACTOR.
- MECHANICAL KEYED NOTES:**
- REMOVE HVAC SHOWN BOLD-DASHED. TYPICAL.
 - EXISTING HVAC TO REMAIN. TYPICAL.
 - COORDINATE CONCRETE CURBS WITH GENERAL CONTRACTOR. SEE STRUCTURAL DRAWINGS. TYPICAL. COORDINATE SHUTDOWN WITH VA COR.
 - TEMPORARY DUCTWORK. FLEXIBLE DUCT IS NOT ALLOWED.
 - EXTEND RECTANGULAR DUCTWORK 24\"/>

- PHASING NOTES - M0:**
- AC-50 WAS CURBED INTO THE ROOF ON A PREVIOUS PROJECT. NO SYSTEMS WERE EXTENDED TO THE UNIT AT THAT TIME.
 - EXTEND UTILITIES TO AC-50. TEST AND BALANCE UNIT.
 - PROVIDE NEW DX UNIT TO SERVE 8904 ELEVATOR ROOM. (5 TON, 2000 CFM). CAP XAC-6 DUCTWORK AT MAIN.
 - PROVIDE NEW RISER THROUGH 5TH FLOOR DOWN TO 4TH CEILING TO PREPARE FOR BACKFEEDING XAC-5.
 - AFTER HOURS: DISCONNECT PORTION OF XAC-6, XAC-8 AND XAC-10 SERVING 4TH, 5TH, 6TH, 7TH & 8TH FLOORS. EXTEND NEW DUCTWORK FROM AC-50 TO BACKFEED XAC-5, XAC-8 AND XAC-10 DUCTWORK. TEST AND BALANCE AC-50 SYSTEM.
 - AFTER HOURS: DISCONNECT PORTION OF XEF-5 SERVING 5TH FLOOR AREA. UTILIZE XAC-10 DUCT AND RECONNECT XEF-5 SYSTEM TO MAKE ROOM FOR NEW DUCTWORK.
- PHASING NOTES - M1:**
- REMOVE XAC-5, XAC-6, XAC-10 AND ASSOCIATED DUCTWORK.
 - REMOVE XRF-5, XRF-6, XRF-10, XEF-15 AND ASSOCIATED DUCTWORK.
 - EXTEND NEW VENTILATION DUCT AND ASSOCIATED FAN SERVING DUMBWATER EQUIPMENT ROOM TO REPLACE XRF-10 AND XEF-15 SYSTEMS.
 - REMOVE XRF-10, XEF-15 AND ASSOCIATED DUCTWORK.
 - REMOVE PORTION OF XAC-7 DUCTWORK TO ACCOMMODATE NEW AC-55 DUCTWORK THAT WILL BE INSTALLED IN PART M2.
- PHASING NOTES - M2:**
- INSTALL NEW AC-51 THROUGH LOUVER IN MEZZANINE LEVEL. EXTEND UTILITIES TO UNIT. TEST AND BALANCE UNIT.
 - INSTALL NEW EF-4A AND ASSOCIATED DUCTWORK.
 - AFTER HOURS: REMOVE XAC-37 AND ASSOCIATED UTILITIES. DISCONNECT TEMPORARY DUCTWORK FROM XAC-48 SERVING 4TH FLOOR SURGERY OFFICE AND LOCKER ROOMS. EXTEND PERMANENT DUCTWORK FROM AC-51 TO SUPPLY AND RETURN RISERS IN FLOOR.
 - AFTER HOURS: DISCONNECT TEMPORARY DUCTWORK FROM XEF-5 SERVING 4TH FLOOR LOCKER ROOMS. EXTEND PERMANENT DUCTWORK FROM EF-4A TO EXHAUST RISER IN FLOOR.
 - AFTER HOURS: REMOVE XAC-48 DUCTWORK SERVING 4TH FLOOR CATH LABS. EXTEND TEMPORARY DUCTWORK FROM AC-50 TO CATH LABS.
 - INSTALL AC-55 ON ROOF. EXTEND UTILITIES TO UNIT. TEST AND BALANCE UNIT.
 - EXTEND PERMANENT DUCTWORK FROM AC-55 TO SUPPLY AND RETURN RISERS.



BID DOCUMENTS

Revisions:	Date
AMENDMENT A0003	06/01/16

CONSULTANTS:	

ARCHITECT/ENGINEERS:

FoxArchitects

One Memorial Drive Suite 1800 Saint Louis, MO 63102

Tel 314.621.4343 Fax 314.621.0261

SSC

Swim, Schuchat, & Cornett Engineering, Inc.

1821 Colonial Avenue Charleston, Missouri 63025 Phone 636.330.7770 Fax 636.330.7877 Missouri Certificate of Authority #NC 001244

Drawing Title	
MECHANICAL 5TH & MEZZANINE FLOOR DUCTWORK DEMOLITION & RENOVATION PLANS	
Approved: Associate Director	Approved: Chief Engineer
Approved: Chief of Staff	Approved: Safety Officer
Approved: Infection Control	Approved: Chief, Police & Security

Project Title		Project Number	
FCA-Upgrade Air Handling Units/Systems		657-15-101JC	
		Building Number 01	
		Drawing Number 1-2B1-M-101	
Location V.A.M.C. ST. LOUIS, MO JOHN COCHRAN DIVISION			
Date 02/24/16	Checked SSC	Drawn SSC	

