

three inches = one foot

one and one half inches = one foot

one inch = one foot

three quarters inch = one foot

one half inch = one foot

three eighths inch = one foot

one quarter inch = one foot

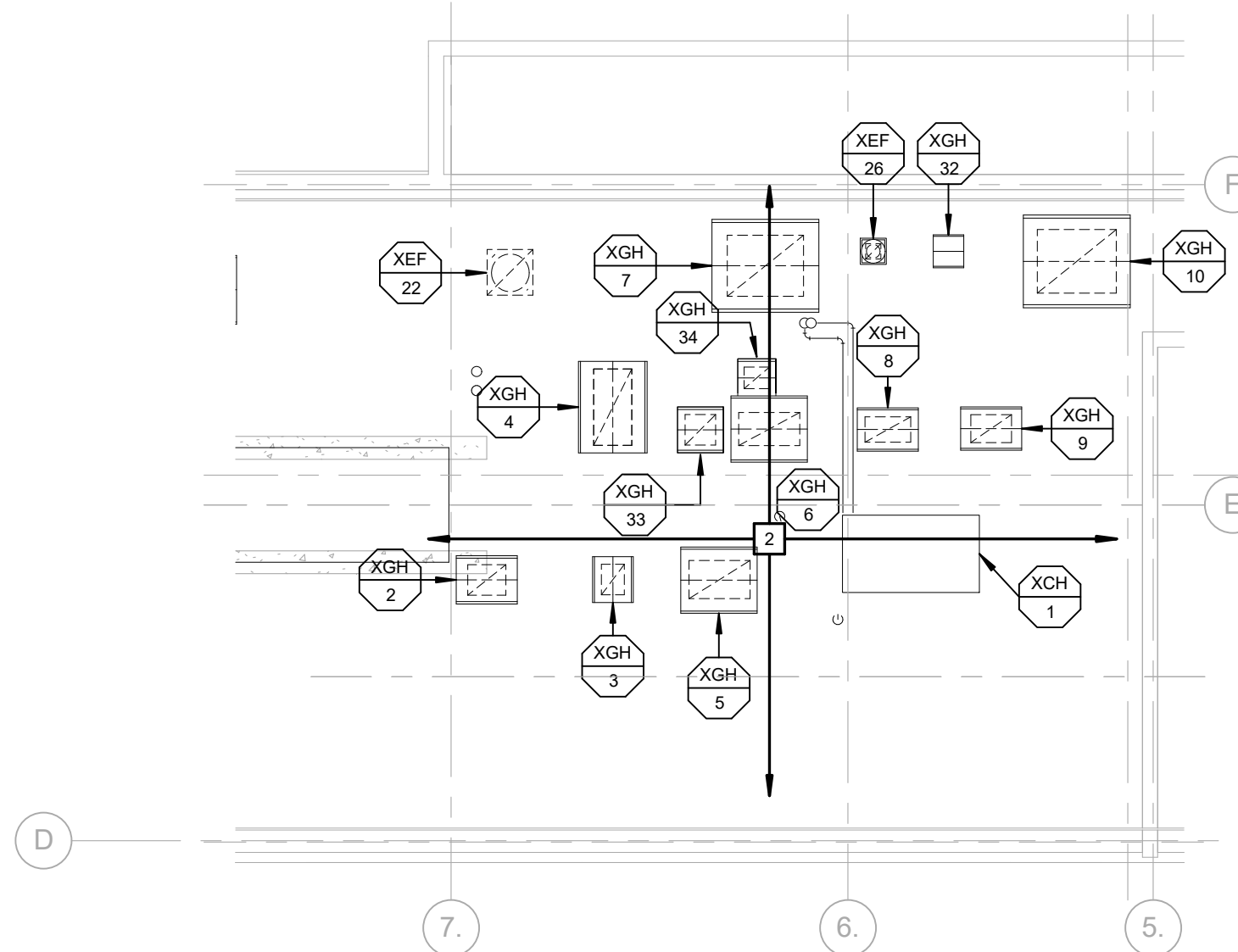
one eighth inch = one foot

MECHANICAL GENERAL NOTES:

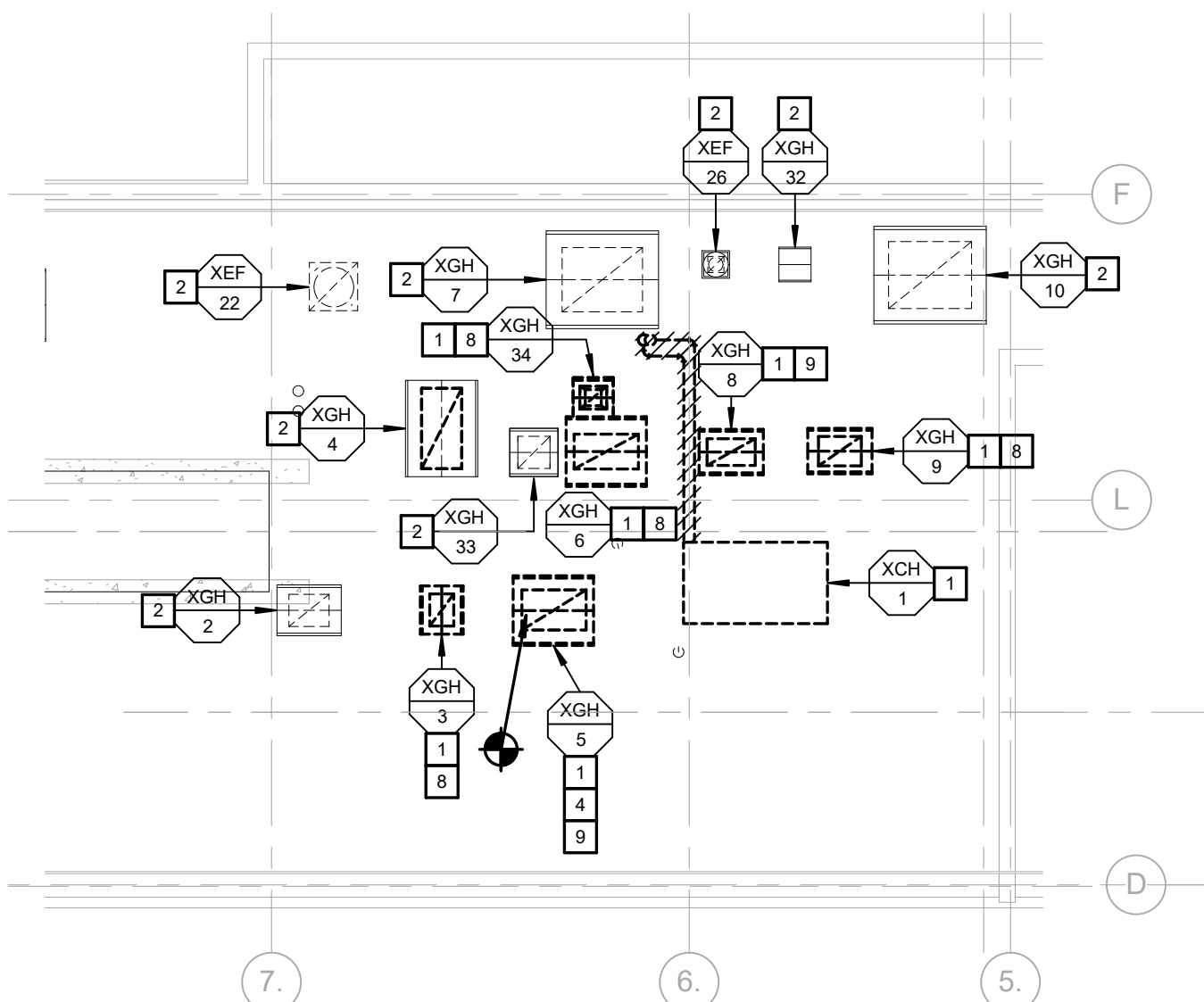
- SEE SHEET 1-2B-M-001 FOR MECHANICAL GENERAL NOTES.
- THE PROJECT LIMIT LINE SHOWN ON THE DRAWINGS INDICATES THE AREA OF SUBSTANTIAL ARCHITECTURAL RENOVATION AND IS NOT INCLUSIVE OF ALL AREAS WHERE WORK WILL BE PERFORMED BY OTHER TRADES.
- WORK IN CORRIDORS TO BE DONE AFTER HOURS OR WEEKENDS, COORDINATE WITH VA COR.
- WORK OUTSIDE OF THE PROJECT LIMIT LINE TO BE COMPLETED AFTER HOURS OR WEEKENDS, COORDINATE WITH VA COR.
- SHUT-DOWNS TO BE DONE AFTER HOURS OR WEEKENDS, COORDINATE WITH VA COR.
- REFER TO LIFE SAFETY PLAN FOR RATED ASSEMBLIES.
- ALL TEMPORARY EXHAUST AND RETURN DUCTWORK SHALL BE RIGID, TEMPORARY SUPPLY DUCTWORK CAN BE FLEXIBLE TYPE RATED FOR HIGH PRESSURE.
- REFER TO SHEET 1-2B-A-106 AND 1-2B-A-107 FOR GENERAL CONDITIONS WORK COORDINATE WITH BOTH 2B AND 2B GENERAL CONTRACTORS.

MECHANICAL KEYED NOTES:

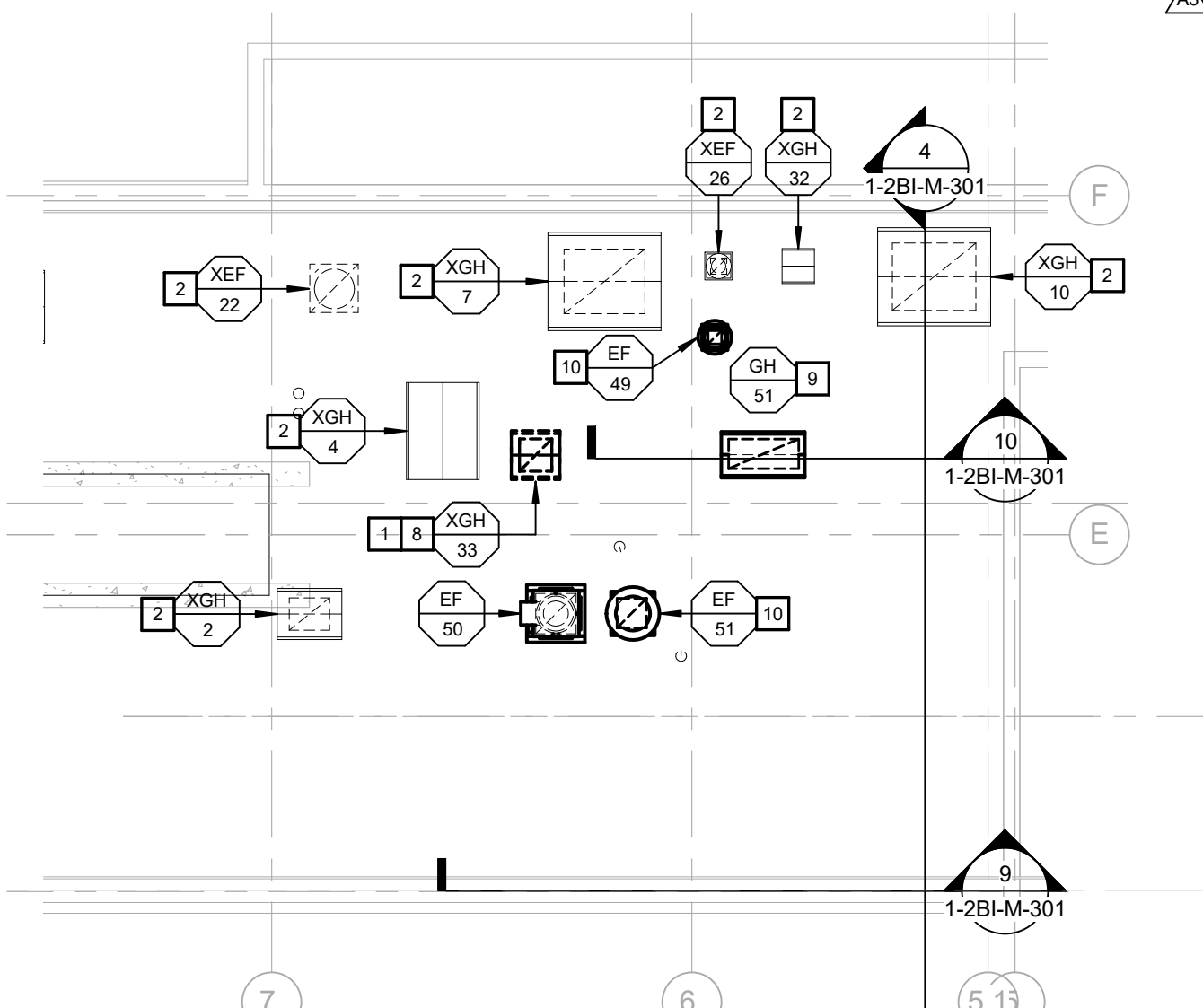
- REMOVE HVAC SHOWN BOLD-DASHED OR CROSS-HATCHED, TYPICAL.
- EXISTING HVAC TO REMAIN, TYPICAL.
- PIPING CAPPED FOR FUTURE.
- COORDINATE SHUTDOWN WITH VA COR.
- SEE SHEET 1-2B-M102 FOR CONTINUATION.
- OUTSIDE AIR INTAKE.
- HEAT TRACE PIPING LOCATED OUTDOORS. COORDINATE WITH ELECTRICAL CONTRACTOR.
- COORDINATE PATCHING OF ROOF OPENING WITH GENERAL CONTRACTOR. SEE STRUCTURAL AND ARCHITECTURAL DRAWINGS.
- EXISTING ROOF OPENING TO BE MODIFIED FOR NEW WORK. COORDINATE WITH GENERAL CONTRACTOR. SEE STRUCTURAL AND ARCHITECTURAL DRAWINGS.
- COORDINATE NEW OPENING IN ROOF WITH GENERAL CONTRACTOR. SEE STRUCTURAL AND ARCHITECTURAL DRAWINGS.
- ROUTE PIPING ON ROOF ON BASE RAILS, SEE DETAIL.
- GUARD RAIL SHOWN FOR REFERENCE. SEE SHEET 1-2B-A-106 AND STRUCTURAL PLANS.
- PLATFORM STAIR SHOWN FOR REFERENCE. SEE SHEET 1-2B-A-106 AND STRUCTURAL PLANS.
- DUCT MOUNTED SMOKE DETECTOR PROVIDED BY EC, INSTALLED BY MC FOR BOTH SUPPLY AND RETURN DUCTWORK.



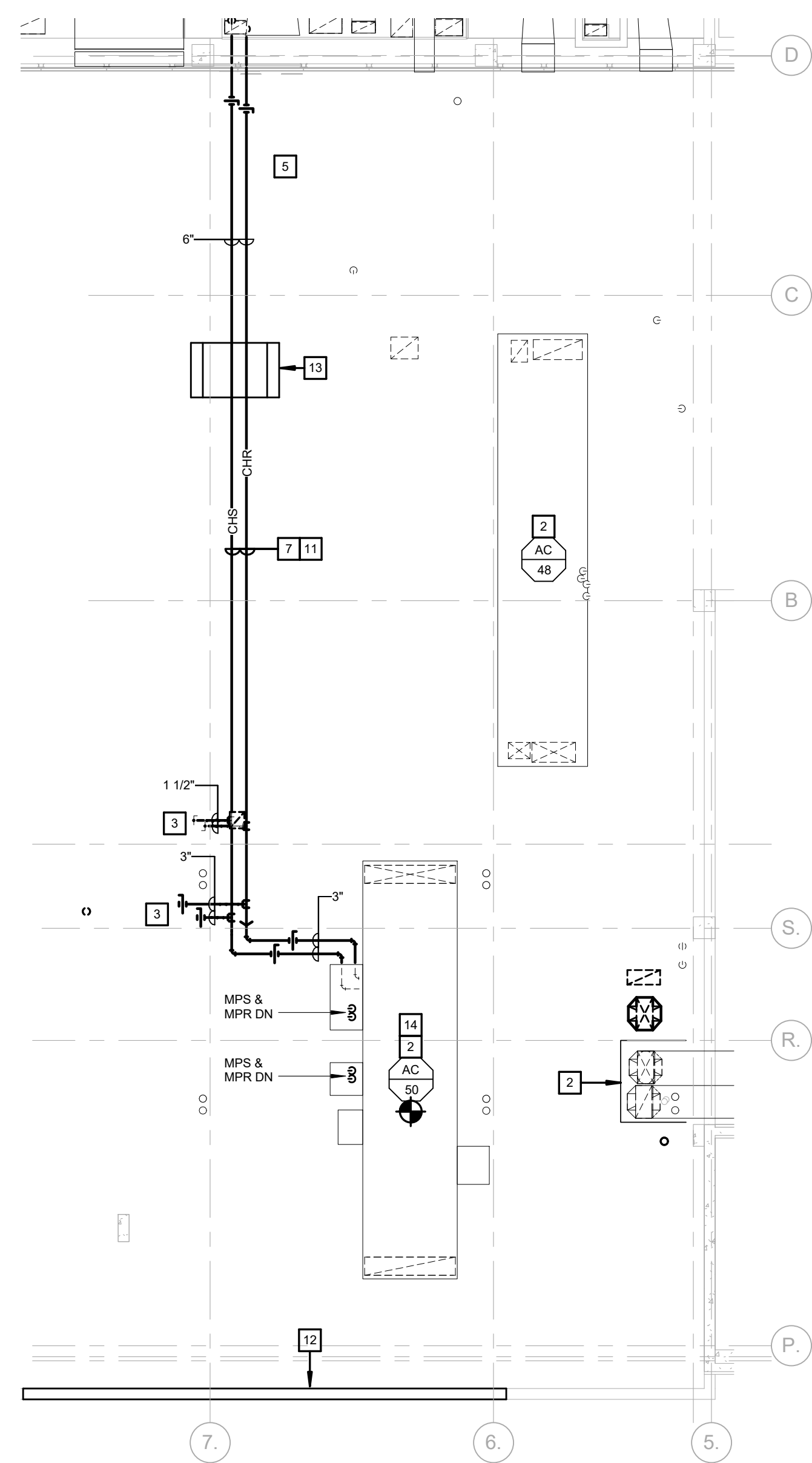
MECHANICAL 7TH FLOOR (MEZZANINE ROOF)
PLAN - M0
3/32" = 1'-0"
NORTH



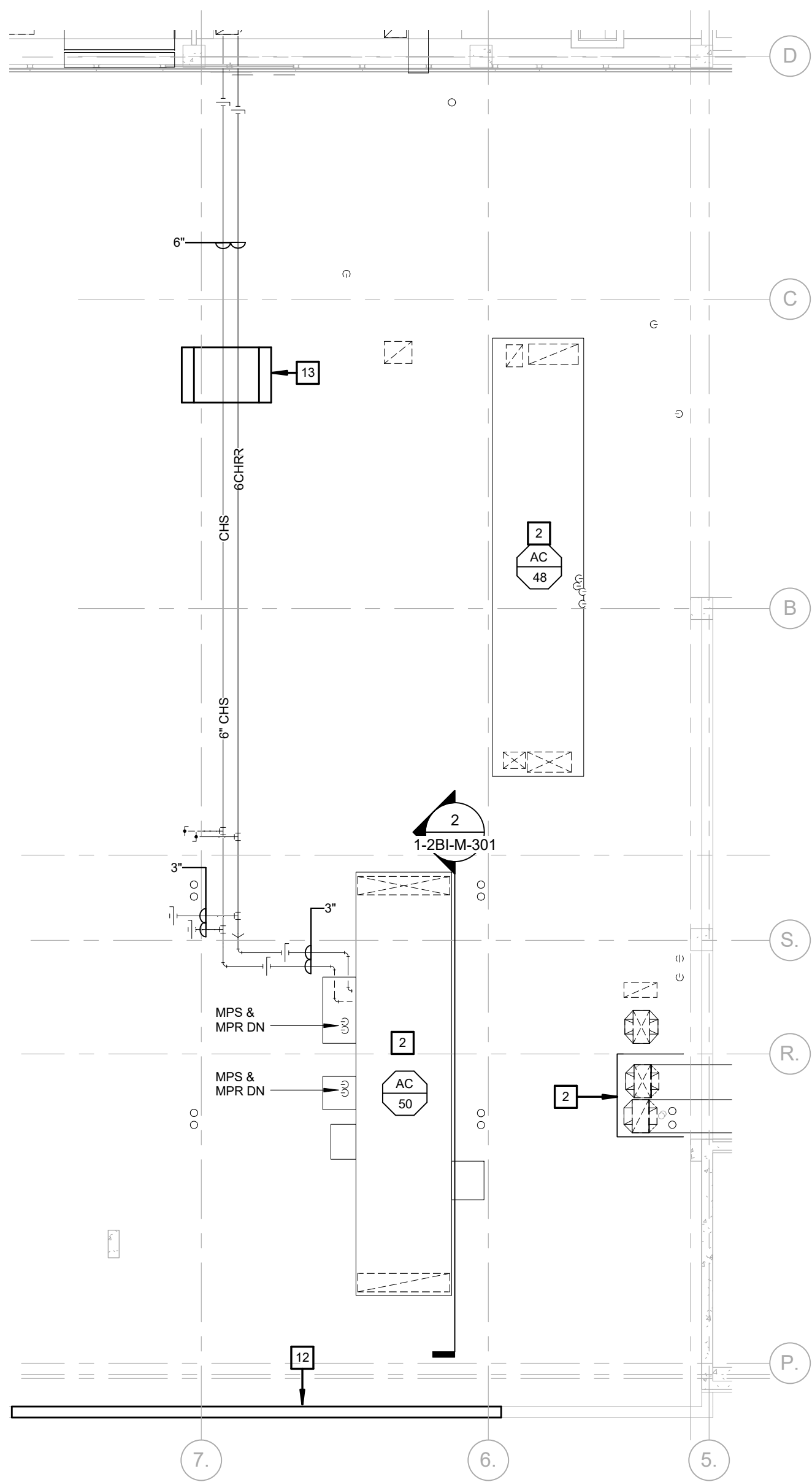
MECHANICAL 7TH FLOOR (MEZZANINE ROOF)
PLAN - M1
3/32" = 1'-0"
NORTH



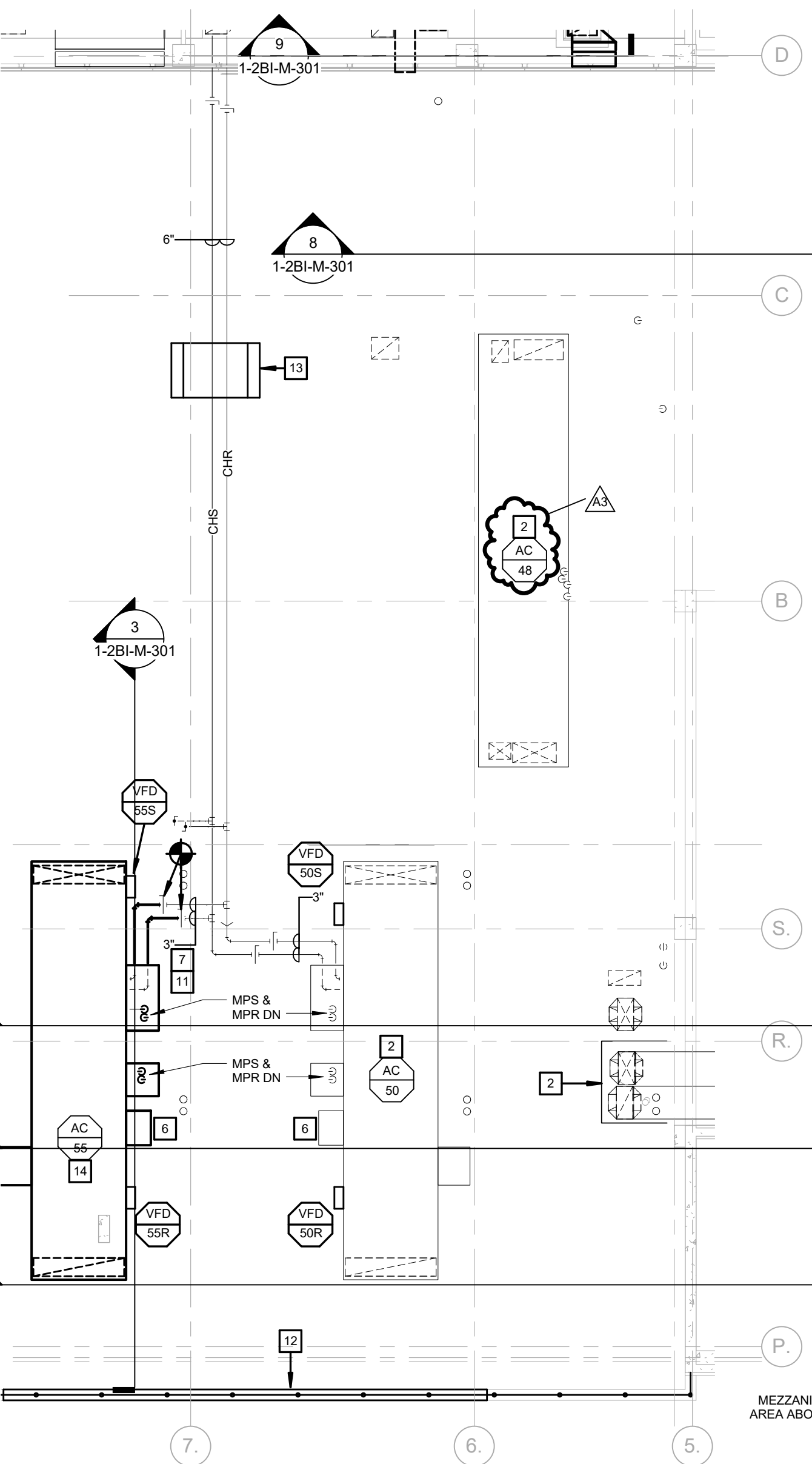
MECHANICAL 7TH FLOOR (MEZZANINE ROOF)
PLAN - M2
3/32" = 1'-0"
NORTH



MECHANICAL - 6TH FLOOR (ROOF) PLAN - M0
3/32" = 1'-0"
NORTH

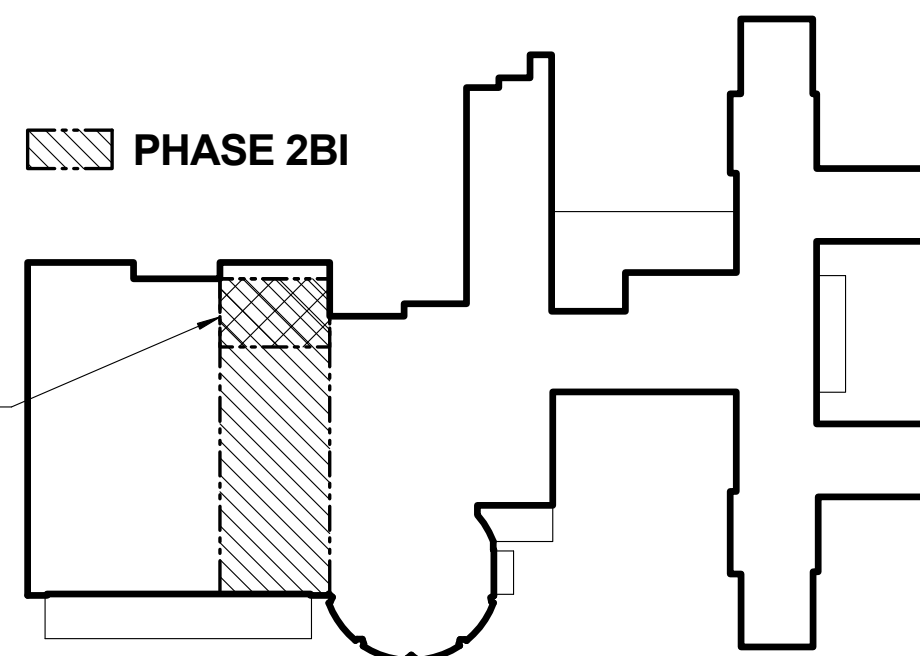


MECHANICAL - 6TH FLOOR (ROOF) PLAN - M1
3/32" = 1'-0"
NORTH



MECHANICAL - 6TH FLOOR (ROOF) PLAN - M2
3/32" = 1'-0"
NORTH

REFER TO SHEET 1-2B-A-106 AND 1-2B-A-107 FOR GENERAL WORK



BID DOCUMENTS

Revisions:	Date
AMENDMENT A00003	06/01/16

CONSULTANTS:

ARCHITECT/ENGINEERS:

FoxArchitects

One Memorial Drive
Suite 1800
Saint Louis, MO 63102

Tel 314.621.4343
Fax 314.621.0261



SSC

Swim, Schuchat, & Cornett
Engineering, Inc.
18201 Collins Industrial
Chandler, Missouri 63025
Phone 636.330.7770 Fax 636.330.7877
Missouri Certificate of Authority #NC 001244

Drawing Title
MECHANICAL 6TH & 7TH FLOOR (ROOF) DEMOLITION & RENOVATION PLANS

Approved: Associate Director

Approved: Chief of Staff

Approved: Infection Control

Approved: Chief Engineer

Approved: Safety Officer

Approved: Chief, Police & Security

Project Title
FCA-Upgrade Air Handling Units/Systems

Location
V.A.M.C. ST. LOUIS, MO
JOHN COCHRAN DIVISION

Date
02/24/16

Checked
SSC

Drawn
SSC

Project Number
657-15-101JC

Building Number
01

Drawing Number
1-2B-M-103

Veterans
Health
Administration

