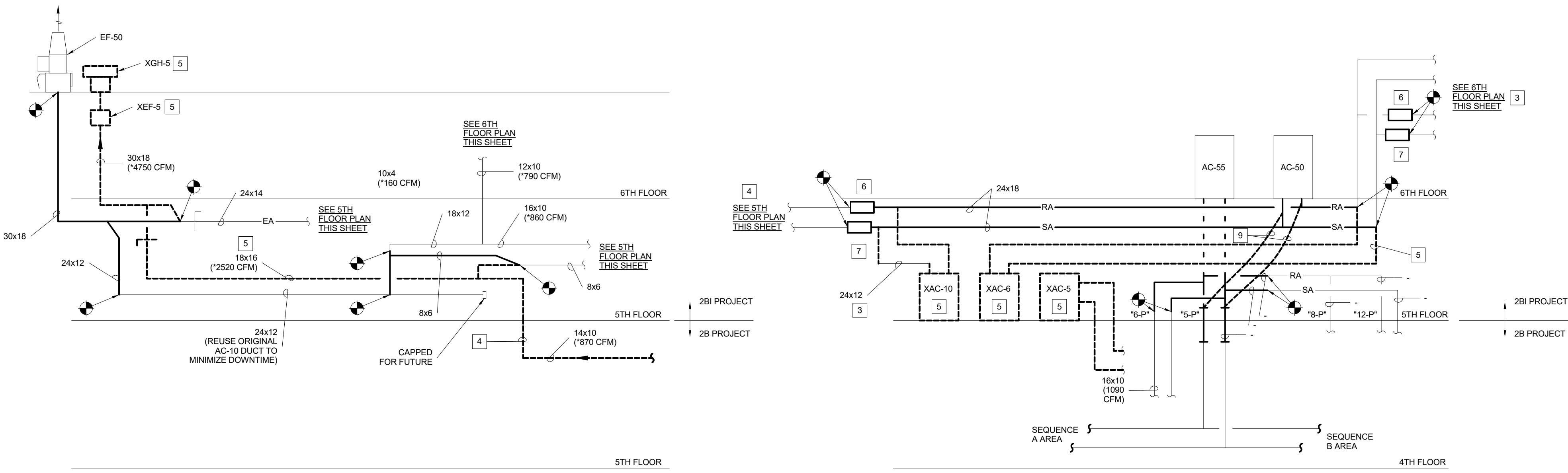
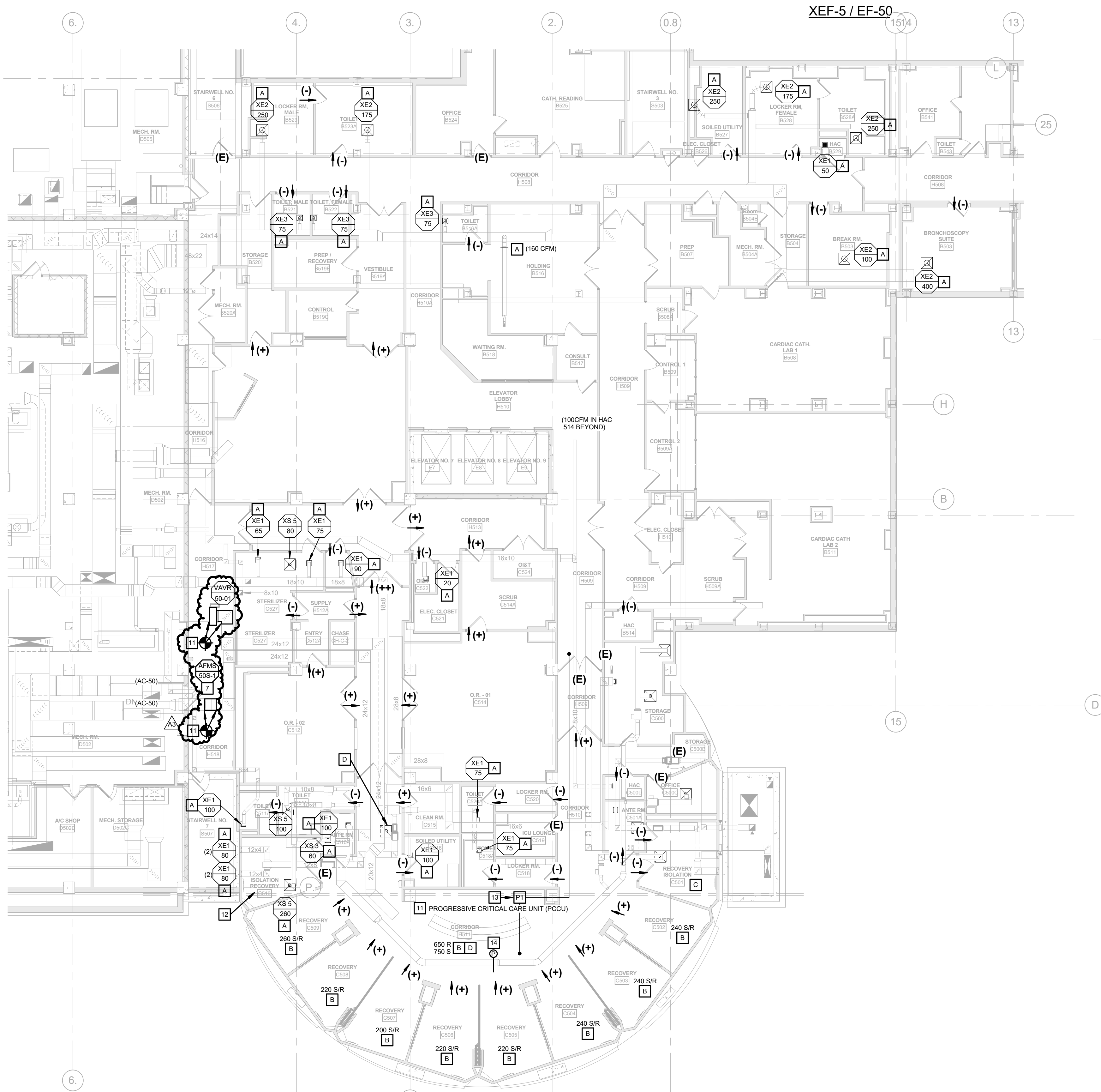


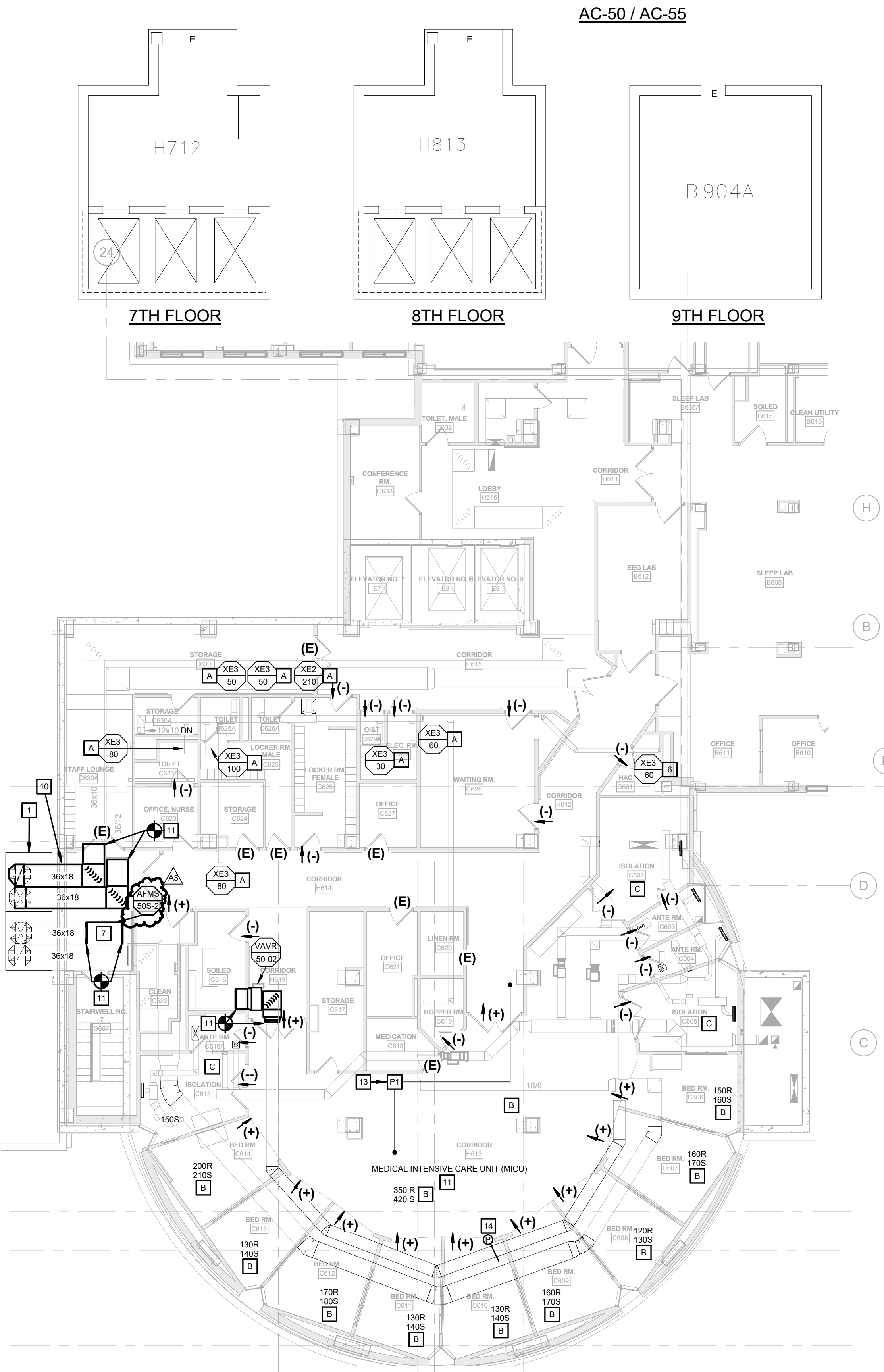
three inches = one foot
one and one half inches = one foot
one inch = one foot
three quarters inch = one foot
one half inch = one foot
three eighths inch = one foot
one quarter inch = one foot
one eighth inch = one foot



- MECHANICAL GENERAL NOTES:**
- SEE SHEET 1-2B1-M-001 FOR MECHANICAL GENERAL NOTES.
 - COORDINATE SHUT-DOWNS WITH VA COR.
 - SEE THIS SHEET FOR AIRFLOW BALANCE PLAN.
 - TEST AND BALANCE CONTRACTOR SHALL SUBMIT WRITTEN MECHANICAL PHASING PLAN TO ENGINEER OF RECORD PRIOR TO COMMENCEMENT OF ANY WORK.
 - FLOW SCHEMATICS ARE A FINAL VERSION OF THE ACTUAL SYSTEM. REFER TO DRAWINGS FOR RECOMMENDED ORDER OF WORK TO MAINTAIN HOSPITAL OPERATIONS.
- MECHANICAL KEYED NOTES:**
- PROVIDE INSULATED DUCTWORK ENCLOSURE AND STRUCTURE TO MATCH EXISTING.
 - SEE FLOOR PLAN FOR CONTINUATION.
 - SEE PROJECT 657-025 SHEET 1-H093 FOR ADDITIONAL 6TH FLOOR EXISTING CONDITIONS. COORDINATE WITH T&B CONTRACTOR.
 - SEE PROJECT 657-023-127 SHEET 1-M-13 FOR ADDITIONAL 5TH FLOOR EXISTING CONDITIONS. COORDINATE WITH T&B CONTRACTOR.
 - REMOVE HVAC SHOWN BOLD-DASHED.
 - RETURN AIR VAV BOX.
 - AIRFLOW MEASURING STATION.
 - PORTION OF AC-10 SUPPLY DUCTWORK TO BE REUSED FOR EF-50 EXHAUST SYSTEM.
 - TEMPORARY DUCT TO KEEP PACU IN SERVICE. COORDINATE PHASING OF THE 2B PROJECT WITH COR AND 2B CONTRACTOR.
 - COORDINATE WALL PENETRATION WITH GENERAL CONTRACTOR. REFER TO STRUCTURAL DRAWINGS.
 - COORDINATE DOWNTIME OF THE EXISTING MICU AND PCU AREAS WITH COR. PROVIDE TEMPORARY HVAC TO MAINTAIN ALL CRITICAL ZONES PER COR.
 - SPACE IS NO LONGER TO BE USED AS A SPECIAL ISOLATION ROOM. COORDINATE WITH COR.
 - NEW SPACE PRESSURIZATION SYSTEM FOR EXISTING INTENSIVE CARE DEPARTMENT. COORDINATE WITH CONTROLS CONTRACTOR.
 - INSTALL NEW DUCT STATIC PRESSURE SENSOR FOR AC-50. COORDINATE BOTH SENSORS WITH CONTROLS CONTRACTOR.

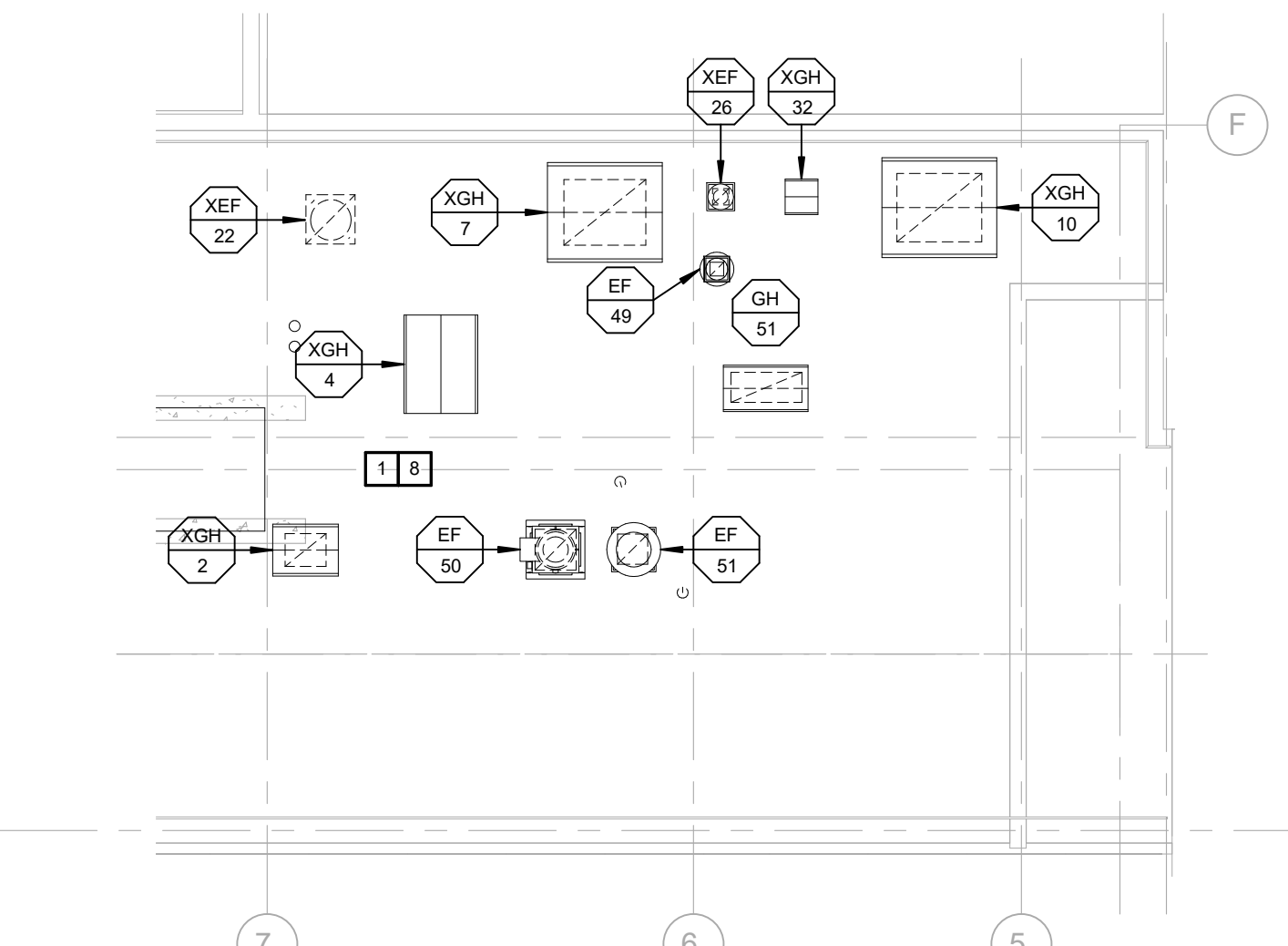


MECHANICAL - 5TH FLOOR BALANCING PLAN 1
3/32" = 1'-0"



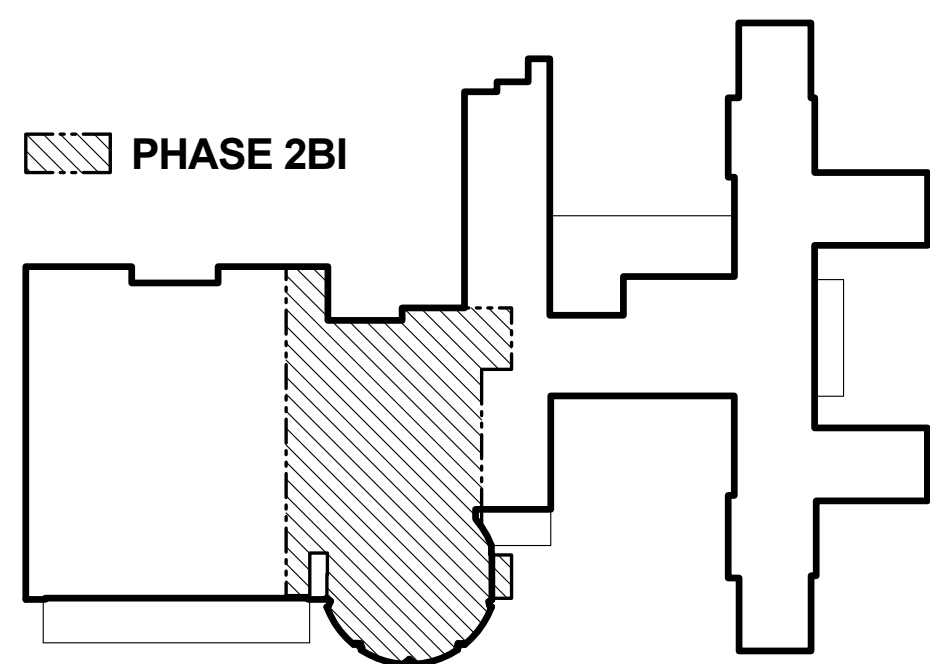
MECHANICAL - 6TH FLOOR BALANCING PLAN 1
3/32" = 1'-0"

TEST AND BALANCE CONTRACTOR SHALL TEST THE SPACE PRESSURIZATION OF EACH ROOM TO VERIFY PRESSURIZATION ARROWS ARE MAINTAINED. SUBMIT WRITTEN REPORT TO ENGINEER OF RECORD AND COR.



MECHANICAL 7TH FLOOR (MEZZANINE ROOF) PLAN - M3
3/32" = 1'-0"

LEGEND	
E	EQUAL PRESSURE
++	DOUBLE POSITIVE PRESSURE (30%)
+	POSITIVE PRESSURE (15%)
-	NEGATIVE PRESSURE (15%)
→	FLOW DIRECTION
⊙	OCCUPANCY SENSOR
⊖	HUMIDITY SENSOR
⊕	TEMPERATURE SENSOR
P1	SINGLE PRESSURE MONITOR
P2	DOUBLE PRESSURE MONITOR
PA	REMOTE ANNUNCIATOR MONITOR



BID DOCUMENTS

Revisions:	Date
AMENDMENT A0003	06/01/16

CONSULTANTS:

ARCHITECT/ENGINEERS:

FoxArchitects

One Memorial Drive
Suite 1800
Saint Louis, MO 63102

Tel 314.621.4343
Fax 314.621.0261



SSC

Swim, Schuchat, & Cornett
Engineering, Inc.

1601 Cedar Street
Charlestown, Missouri 63025
Phone 636.350.7775 Fax 636.350.7877
Missouri Certificate of Authority #NC 001244

Drawing Title
MECHANICAL FLOW SCHEMATICS AND AIRFLOW
BALANCE PLANS

Approved: Associate Director

Approved: Chief Engineer

Approved: Chief of Staff

Approved: Safety Officer

Approved: Infection Control

Approved: Chief, Police & Security

Project Title
FCA-Upgrade Air Handling Units/Systems

Project Number
657-15-101JC

Building Number
01

Location
V.A.M.C. ST. LOUIS, MO
JOHN COCHRAN DIVISION

Date
02/24/16

Checked
SSC

Drawn
Author

Project Number
657-15-101JC

Building Number
01

Drawing Number
1-2B1-M-503

Veterans
Health
Administration

