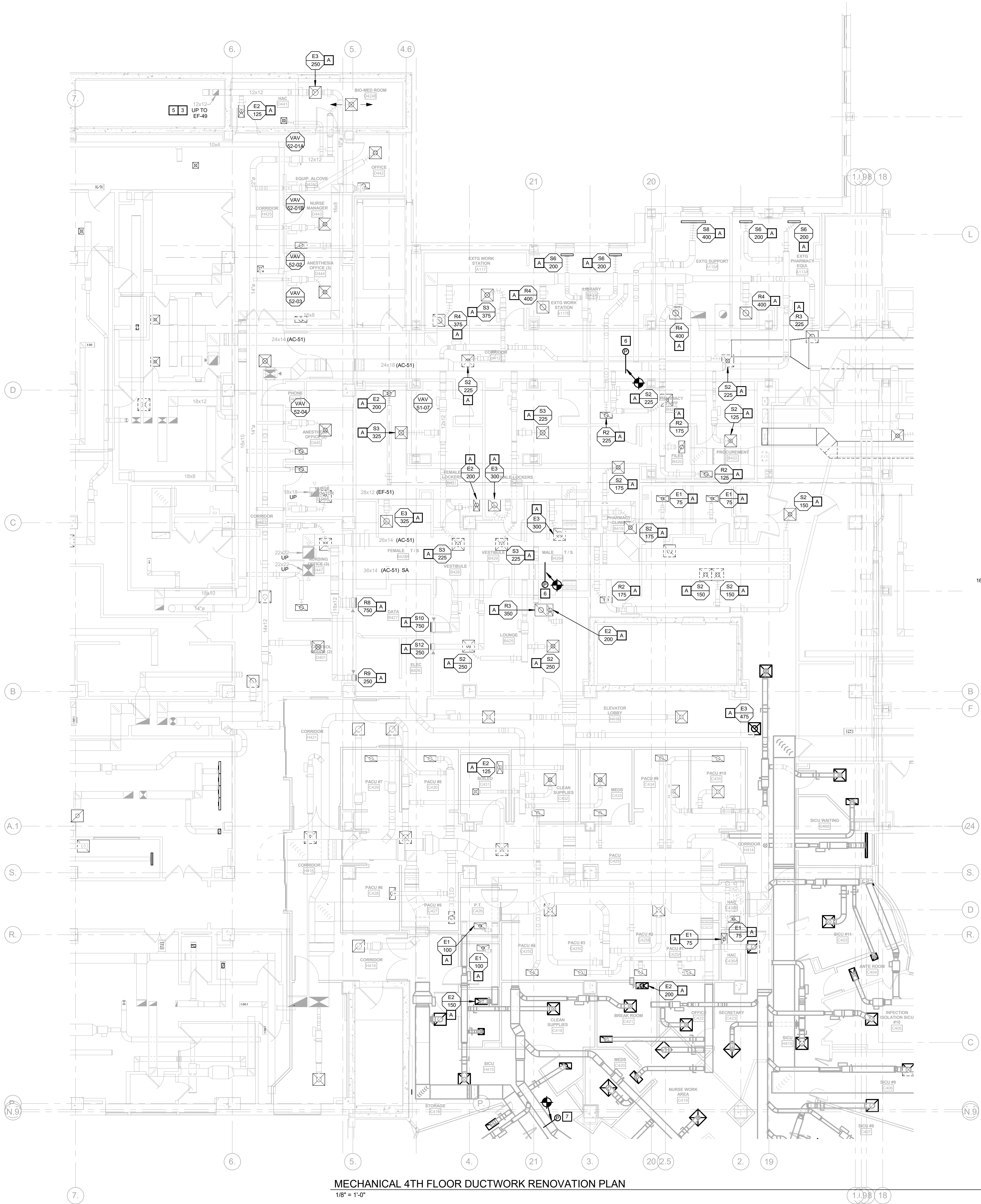


three inches = one foot  
one and one half inches = one foot  
one inch = one foot  
three quarters inch = one foot  
one half inch = one foot  
three eighths inch = one foot  
one quarter inch = one foot  
one eighth inch = one foot



MECHANICAL 4TH FLOOR DUCTWORK RENOVATION PLAN  
1/8" = 1'-0"

**MECHANICAL GENERAL NOTES:**

1. SEE SHEET 1-3-M-001 FOR MECHANICAL GENERAL NOTES.
2. COORDINATE SHUT-DOWNS WITH VA COR.
3. SEE SHEET 1-3-M-106 FOR AIRFLOW BALANCE PLAN.
4. TEST AND BALANCE CONTRACTOR SHALL SUBMIT WRITTEN MECHANICAL PHASING PLAN TO ENGINEER OF RECORD PRIOR TO COMMENCEMENT OF ANY WORK.
5. FLOW SCHEMATICS ARE A FINAL VERSION OF THE ACTUAL SYSTEM. REFER TO DRAWINGS FOR RECOMMENDED ORDER OF WORK TO MAINTAIN HOSPITAL OPERATIONS.

**MECHANICAL BALANCING NOTES:**

1. TRAVERSE EXISTING DUCTWORK AT THIS LOCATION AT COMPLETION OF RENOVATION WORK. SUBMIT WRITTEN REPORT TO ENGINEER OF RECORD.
2. REBALANCE EXISTING AIR DEVICES TO EACH OPERATING ROOM (EXISTING AND NEW). SUBMIT WRITTEN REPORT TO ENGINEER OF RECORD.
3. BALANCE SUPPLY FAN AFTER VFD IS INSTALLED FOR DUCT STATIC PRESSURE TO ACHIEVE DESIGN AIRFLOW AT FURTHEST VAV BOX.
4. REPLACE SHEAVES AND BELTS FOR FINAL AIRFLOW.
5. SET RETURN FAN VFD TO TRACK SUPPLY FAN MINUS OUTSIDE AIR OFFSET CFM.
6. TEST AND BALANCE CONTRACTOR SHALL TAKE READINGS OF SUPPLY AND RETURN DUCTWORK AFFECTED BY SCOPE OF WORK AND SUBMIT REPORT TO ENGINEER OF RECORD. REBALANCE TO NEW DESIGN AIRFLOW.
7. SUBMIT WRITTEN MECHANICAL PHASING PLAN TO ENGINEER OF RECORD PRIOR TO COMMENCEMENT OF ANY WORK.

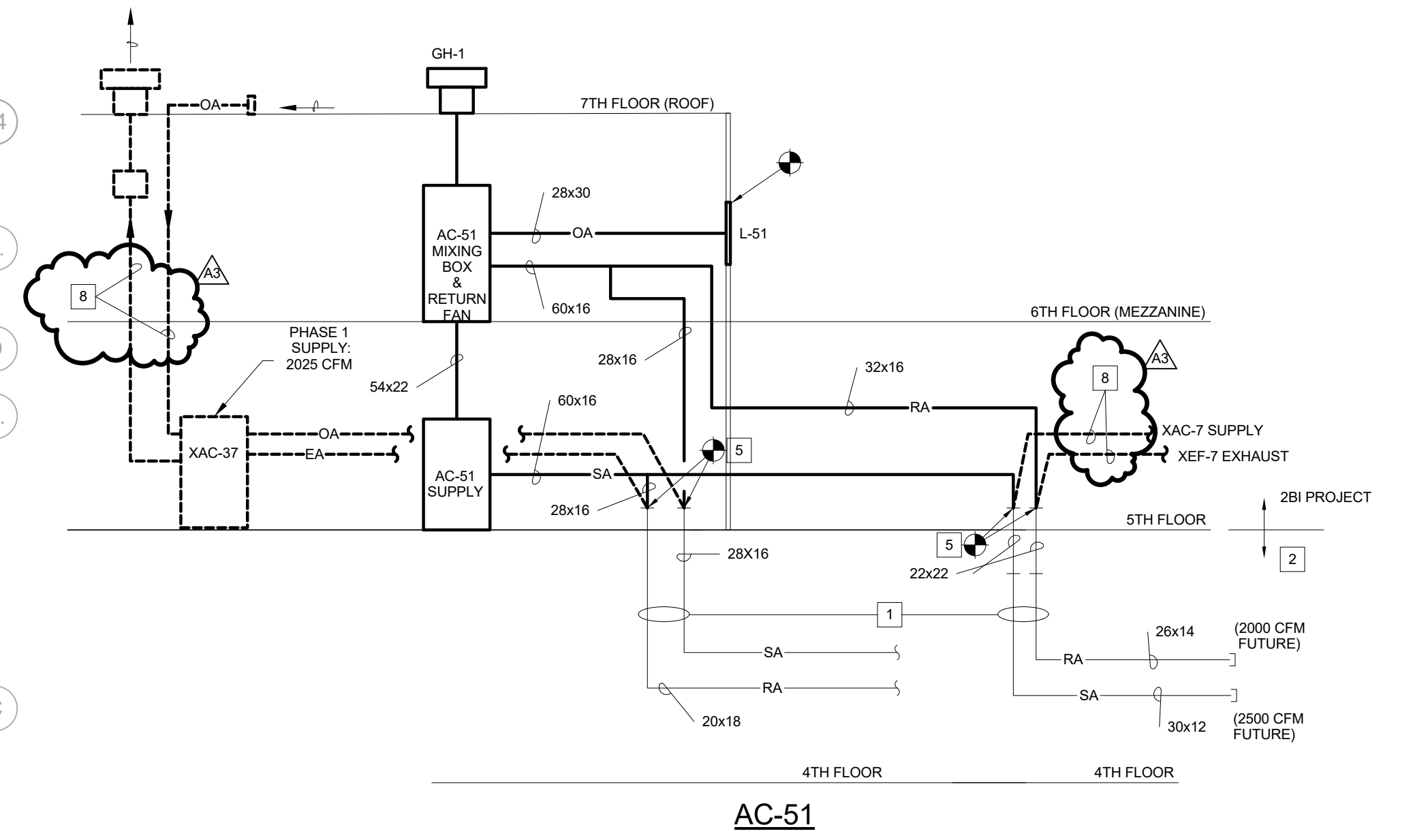
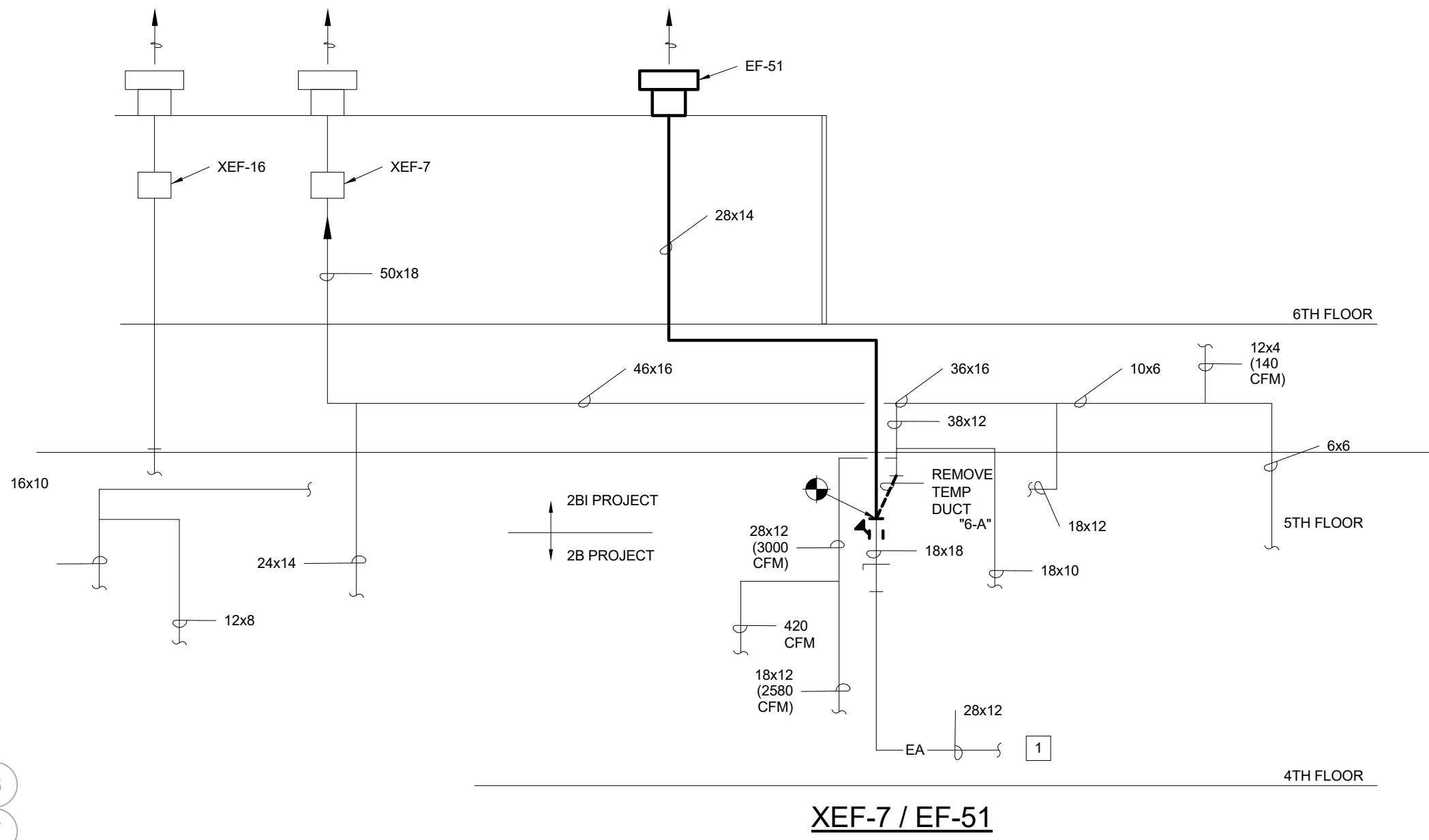
**MECHANICAL KEYED NOTES:**

1. SEE PLANS FOR CONTINUATION.
2. DUCT IS CAPPED FOR FUTURE PROJECT.
3. SEE SHEET 1-2B-M-101 FOR CONTINUATION.
4. CLOSE DAMPER/CAP DUCTWORK AT THIS LOCATION.
5. COORDINATE SWITCHOVER TO MAINTAIN HVAC TO 4TH FLOOR AREAS AT ALL TIMES.
6. DUCT STATIC PRESSURE SENSOR FOR AC-51. COORDINATE WITH CONTROLS CONTRACTOR.
7. DUCT STATIC PRESSURE SENSOR FOR AC-55. COORDINATE WITH CONTROLS CONTRACTOR.

8. DEMO DUCTWORK SHOWN BOLD-DASHED. REFER TO PLANS.

**MECHANICAL BALANCING NOTES:**

- A. BALANCE AIR DEVICE TO AIRFLOW SHOWN. SUBMIT REPORT TO ENGINEER.



**BID DOCUMENTS**

Revisions:	Date
A3 AMENDMENT A0003	06/01/16

**CONSULTANTS:**

**ARCHITECT/ENGINEERS:**

**FoxArchitects**

One Memorial Drive  
Suite 1800  
Saint Louis, MO 63102

Tel 314.621.4343  
Fax 314.621.0261



**SSC**

Swim, Schuchat, & Cornett  
Engineering, Inc.

1801 Cottonwood  
Charlestown, Missouri 63025  
Phone 636.350.7770 Fax 636.350.7877  
Missouri Certificate of Authority #NC 001244

**Drawing Title**  
**MECHANICAL FLOW SCHEMATICS AND AIRFLOW BALANCE PLANS**

Approved: Associate Director

Approved: Chief of Staff

Approved: Infection Control

Approved: Chief Engineer

Approved: Safety Officer

Approved: Chief, Police & Security

**Project Title**  
**FCA-Upgrade Air Handling Units/Systems**

Location  
V.A.M.C. ST. LOUIS, MO  
JOHN COCHRAN DIVISION

Date  
02/24/16

Checked  
Designer

Drawn  
Author

**Project Number**  
**657-15-101JC**

Building Number  
01

Drawing Number  
1-2BI-M-504

**Veterans Health Administration**

