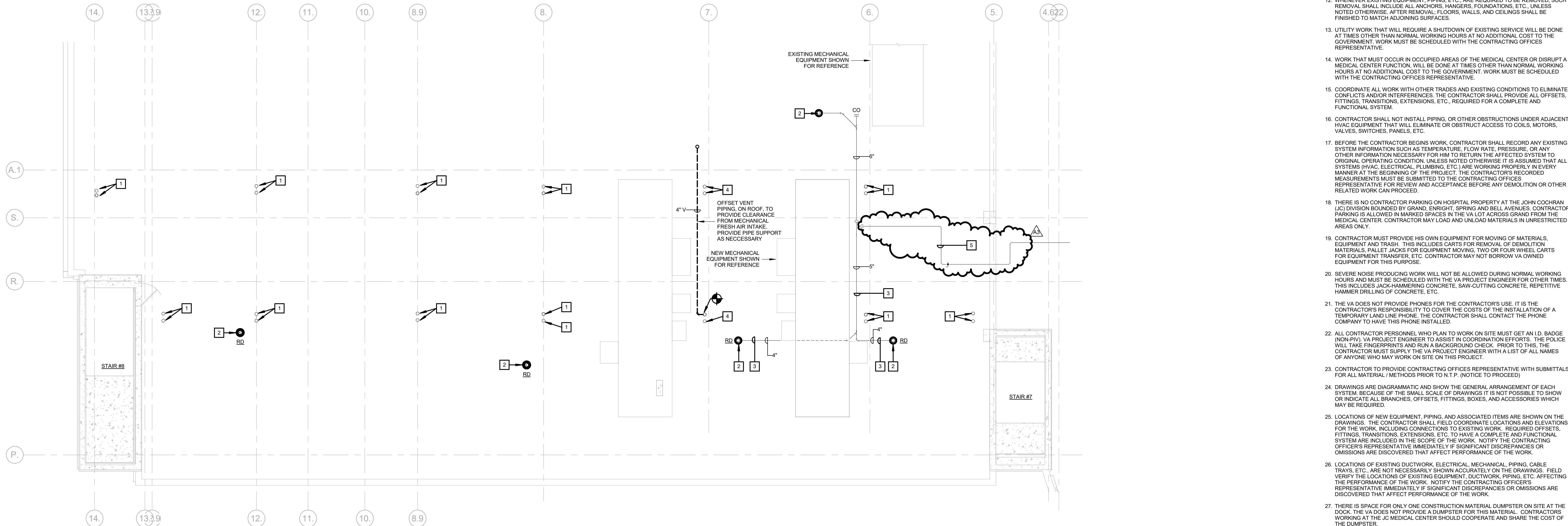



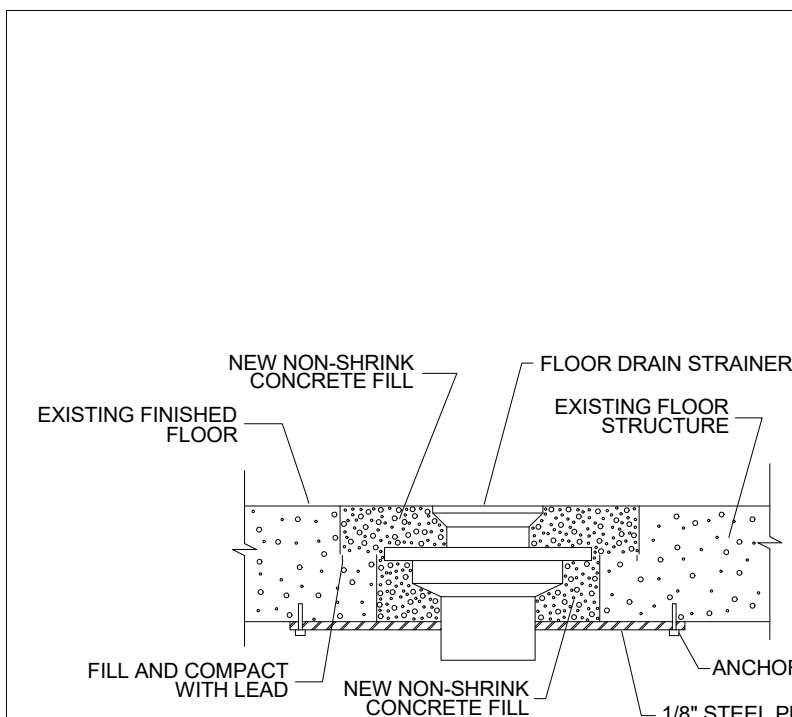
[illegible]

PLUMBING KEYED NOTES:

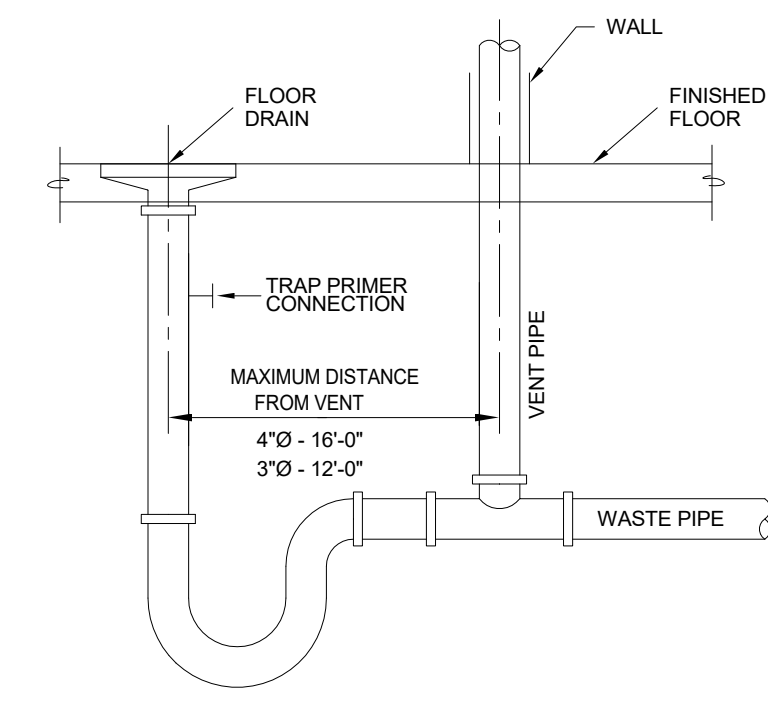
- 1 EXISTING VENT THRU ROOF TO REMAIN.
- 2 EXISTING ROOF DRAIN TO REMAIN.
- 3 THE PLUMBING CONTRACTOR TO COORDINATE REMOVAL AND REPLACEMENT OF EXISTING STORM PIPING AS NECESSARY TO COORDINATE WITH MECHANICAL DUCTWORK INSTALLATION.
- 4 CAP EXISTING VENT THRU ROOF.
- 5 COORDINATE REMOVAL AND REPLACEMENT OF EXISTING WASTE AND VENT GAS DISPOSAL VENT PIPING AS NECESSARY TO COORDINATE WITH MECHANICAL DUCTWORK INSTALLATION. COORDINATE DOWNTIME WITH COR.



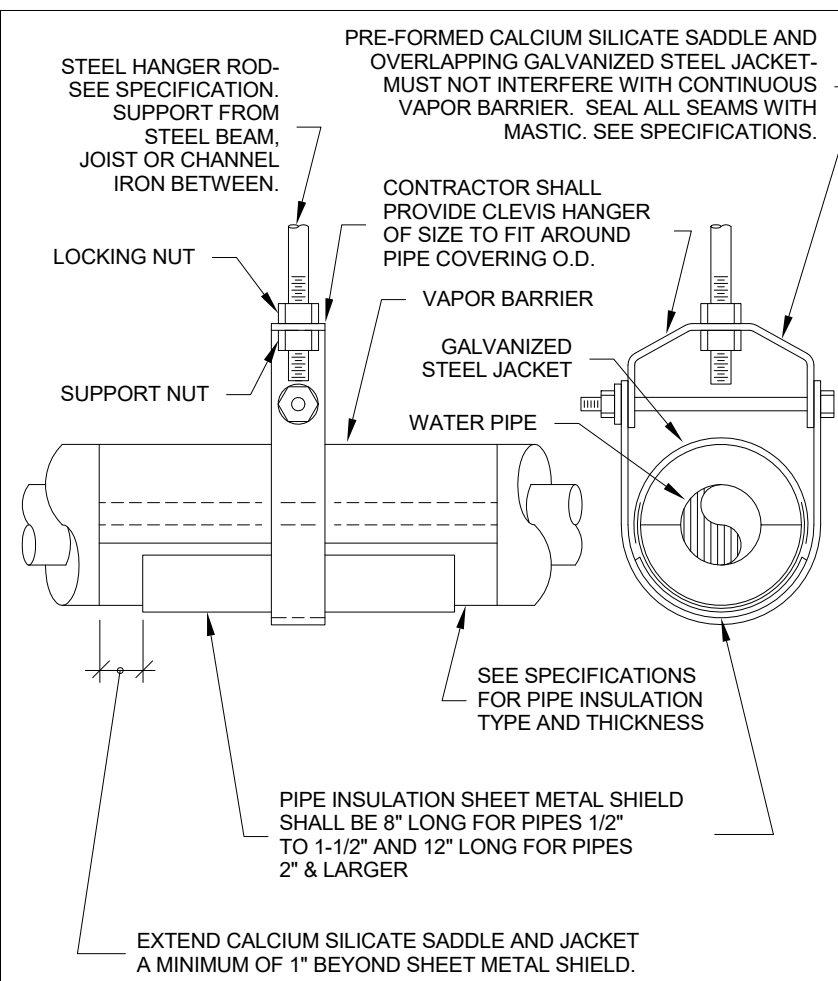
 PLUMBING - 6TH FLOOR/ROOF
1/8" = 1'-0"



NEW FLOOR DRAIN IN EXISTING SLAB
NO SCALE



FLOOR DRAIN DETAIL
NO SCALE



PIPE COVERING PROTECTOR DETAIL

[illegible]

ARCHITECT/ENGINEERS:

One Memorial Drive
Suite 1800
Saint Louis, MO 63102



**Swim, Schuchat, & Cornett
Engineering, Inc.**
18207 Edison Avenue
Chesterfield, Missouri 63005
Phone: 636.530.7770 Fax: 636.530.7877
Missouri Certificate of Authority #NC 00124

Approved: Infection Control

Date

Checked	Drawn
Designer	Author

I-2BI-PL-00

 Department of

BID DOCUMENTS