

SEQUENCING NOTES

1. CONTRACTOR'S DESIGNATED SITE ACCESS VIA LOADING DOCK AREA.

2. CONSTRUCTION ACCESS AND MATERIAL/ TRASH ROUTE

3. TRASH DUMPSTER AREA TO BE COORDINATED/APPROVED BY COTR.

4. AREA OF CONSTRUCTION AND SITE STAGING TO BE COORDINATED/ APPROVED BY COTR AND ARCHITECT.

5. CONTRACTOR'S OFFICE, STORAGE TRAILERS, ETC. TO BE COORDINATED /APPROVED BY COTR & ARCHITECT.

6. PRIOR TO ANY WORK BEING PERFORMED, THE CONTRACTOR SHALL HAVE AN APPROVED FIRE SAFETY PLAN AS REVIEWED BY THE COTR.

7. "INFECTION CONTROL MEASURES" TO BE FOLLOWED PER DRAWINGS/ SPECIFICATIONS AND ARE TO BE IN PLACE PRIOR TO DEMOLITION WORK COMMENCING (I.E. ZIP-WALLS SET FOR CONSTRUCTION OF TEMPORARY 2HR FIREWALL & VESTIBULE W/STICKY WALK-OFF MAT, NEGATIVE AIR MACHINE SET, ETC.). SEE SECTION 01 80 00 INFECTION CONTROL RISK ASSESSMENT FOR PROCEDURE AND LAYOUT.

8. MAINTAIN EXISTING TOILET (1B-190) DURING CONSTRUCTION FOR AS LONG AS POSSIBLE TO SERVE AS CONTRACTOR'S FACILITIES. WHEN DEMOLITION IS REQUIRED FOR THIS TOILET, CONTRACTOR'S SHALL HAVE THE USE OF STAFF TOILET TO BE DESIGNATED IN ELEVATOR CORR. AREA.
9. INTERIOR DEMOLITION WORK TO COMMENCE UPON CONTRACTOR'S APPROVED CONSTRUCTION SCHEDULE SHOWING PRELIMINARY UTILITY SHUTDOWNS, MATERIAL DELIVERY, CONSTRUCTION TIMETABLE, EARLY SUBMITTALS LONG LEAD ITEMS, ETC. (REFER TO DRAWINGS AND SPECIFICATIONS FOR ADDITIONAL INFORMATION).

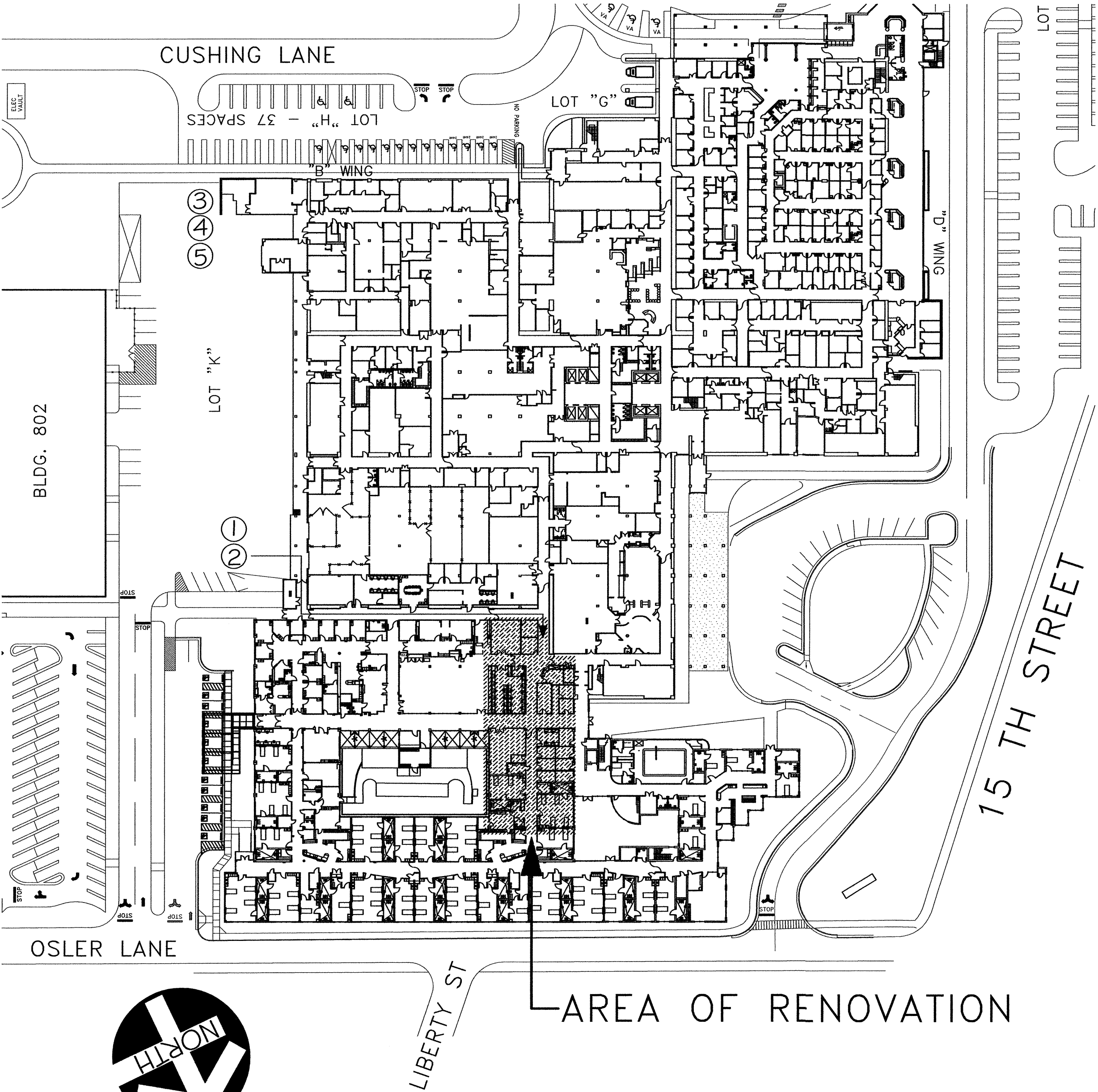
10. LIMIT OF CONSTRUCTION SHALL BE PORTIONED AND SCHEDULED IN OCCUPIED AREAS WITH PRIOR APPROVAL FROM COTR.

11. GENERAL CEILING ACCESS IN OCCUPIED AREAS TO BE PORTIONED AND SCHEDULED WITH COTR PRIOR TO PLUMBING TIE-INS.

12. CONTRACTOR'S ACCESS AND MAJOR DELIVERIES TO BE COORDINATED AND APPROVED BY COTR.

13. INTERIOR LAYOUT, MATERIAL DELIVERY & CONSTRUCTION WORK ONGOING, REFER TO CONSTRUCTION DOCUMENTS FOR NEW WORK.

14. UTILITY SHUTDOWNS & TIE-INS TO VERTICAL RISERS & HORIZONTAL RUNS REQUIRE PRIOR NOTICE AND APPROVAL BY COTR IN ACCORDANCE TO DRAWINGS & SPECIFICATIONS.



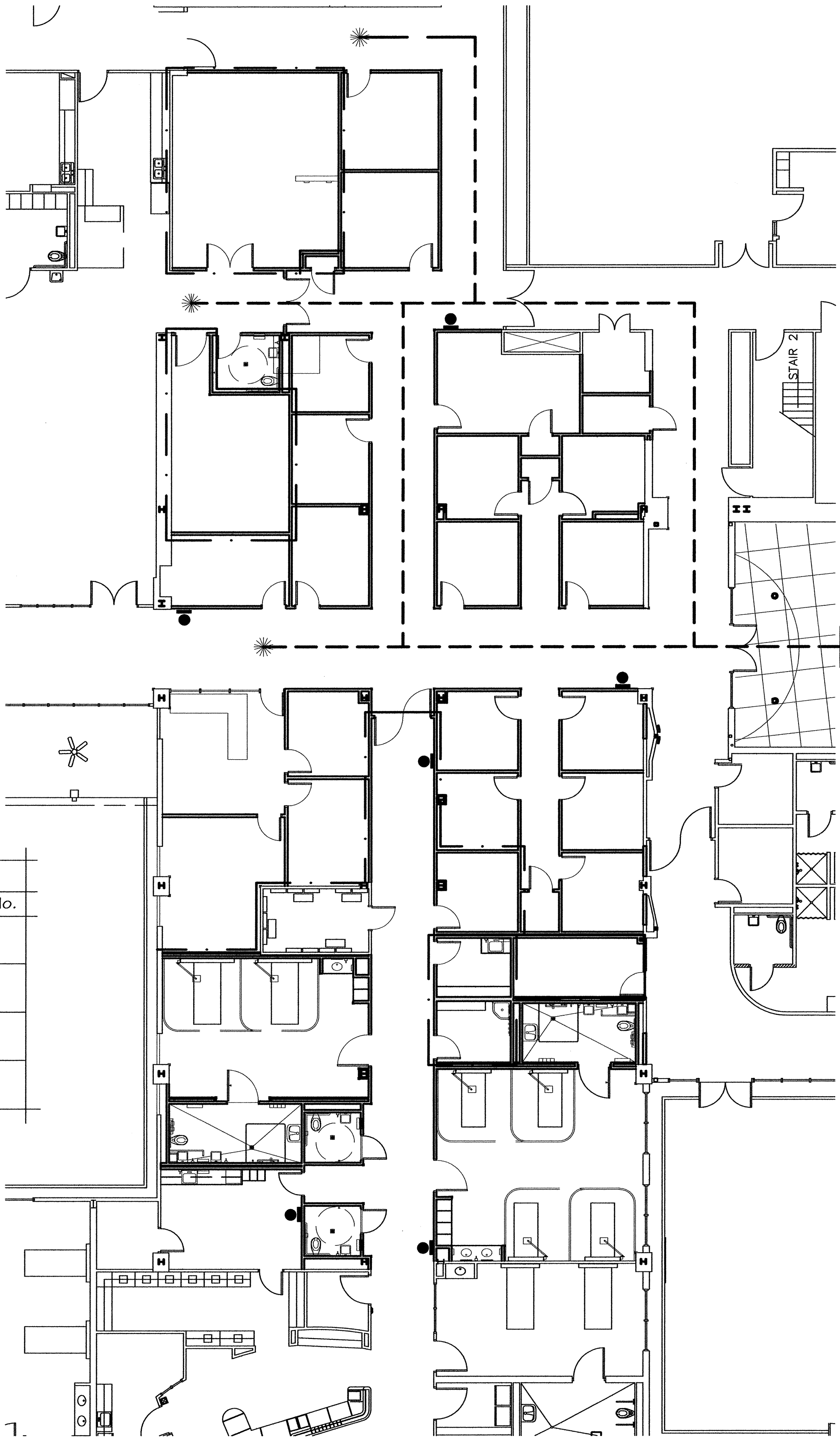
CONSTRUCTION ACCESS/STAGING PLAN
SCALE: 1/64"=1'-0"
P-1
AO.1

LIFE SAFETY LEGEND

	FIRE EXTINGUISHER - CABINET MOUNTED, FULLY RECESSED
	EXIT DOOR
	PATH OF EGRESS TRAVEL

NOTE:
ALL MECHANICAL CHASES SHALL BE 1-HR RATED

FIRE RATED WALLS		
SYMBOL	RATING	U.L.No.
	1 - HOUR RATED PARTITION	
	3-HOUR RATED PARTITION	
	EXISTING WALL	
	NEW MTL STUDS WALL	



LIFE SAFETY PLAN
SCALE: 3/32"=1'-0"
P-2
AO.1

REVISIONS:

DATE:

DRAWN BY:

J. OLIVER

CHECKED BY:

R. S. VIRGO

VIRGO GAMBILL

ARCHITECTS

2531 CENTER WEST PARKWAY,

SUITE 200

AUGUSTA, GEORGIA 30909

(706) 736-3661

MEMBERS OF THE AMERICAN INSTITUTE OF ARCHITECTS

THIS DOCUMENT IS PROPERTY OF VIRGO GAMBILL ARCHITECTS. THE UNAUTHORIZED REPRODUCTION, COPYING, OR OTHERWISE USE OF THIS DOCUMENT IS STRICTLY PROHIBITED AND ANY INFRINGEMENT THEREUPON IS SUBJECT TO LEGAL ACTION. 2007 © VIRGO GAMBILL ARCHITECTS

APPROVED BY:

MEDICAL CENTER DIRECTOR

APPROVED BY:

FACILITY MANAGEMENT SERV LINE EXEC

PROJECT TITLE:

RENOVATE "E" WING BUILDING 801, DOWNTOWN DIVISION AUGUSTA, GEORGIA

DRAWING TITLE:

CONSTRUCTION ACCESS/STAGING PLAN, LIFE SAFETY PLAN

DATE:

APRIL 29, 2011

VA PROJECT NO.

509-318E

DRAWING NO.

801-AO.1

DWG.

2 of 44

Department of Veterans Affairs
VAMC Augusta, Georgia
Engineering Department (138)