

PHASE I & II INFECTION CONTROL NOTES

1. BARRIER CONSTRUCTION - CONSTRUCT BARRIER WALLS WITH METAL STRUCTURAL MEMBERS AND 5/8" GYPSUM WALLBOARD. FOR AREAS WITH CEILING TILES REMOVED, EXTEND WALL BARRIERS TO 7TH FL DECK WITH FOIL FACED EXTERIOR FOAM SHEATHING AND TAPE, UNLESS EXISTING PLENUM WALLS ALLOW CONTAINMENT OF THE WORK AREAS AND MAINTENANCE OF NEGATIVE PRESSURE. SEAL ALL GAPS AND PENETRATIONS IN WALLS WITH PAINTERS TAPE. ATTACH SELF CLOSING HOLLOW WOOD FRAME DOOR FOR ENTRANCE AND EXIT TO THE SITE.
2. ANTEROOM - ANTEROOM WILL SERVE AS THE STAGING AREA FOR CONSTRUCTION PERSONNEL. THE ANTEROOM SHALL BE KEPT CLEAN BY HEPA VACUUMING AND MOPPING AS NEEDED THROUGHOUT THE DAY. STICKY MATS ARE REQUIRED INSIDE THE ENTRANCE OF THE CONSTRUCTION ZONE ANTEROOM. THE WORKDAY SHALL BEGIN WITH CLEAN MATS, AND MATS SHALL BE CHANGED AS OFTEN AS NECESSARY. THE CONTRACTOR WILL ENSURE THAT TOOLS, EQUIPMENT, AND SUPPLIES ARE CLEAN PRIOR TO ENTRY INTO THE OR RENOVATION AREA. ANY TOOLS, EQUIPMENT, AND SUPPLIES THAT MUST BE TRANSFERRED INTO THE OCCUPIED HOSPITAL SHOULD BE COVERED BEFORE ENTERING PATIENT CARE AREAS.
3. PERSONAL PROTECTIVE EQUIPMENT - WORKERS ARE REQUIRED TO DON TYVEK OR SIMILAR DISPOSABLE COVERALLS AND SHOE COVERS FOR ALL DEMOLITION, CEILING REMOVAL, AND WALLBOARD INSTALLATION, MUDDING, AND FINISHING. COVERALLS ARE TO BE REMOVED PRIOR TO LEAVING THE SITE (IN THE ANTEROOM).
4. DEBRIS TRANSFER - REMOVE DEBRIS TO DUMPSTER LOCATION ON THE SOUTH SIDE OF THE HOSPITAL; OR TO ALTERNATE LOCATION AS DESIGNATED BY VA. CARTS AND REFUSE CONTAINERS FOR MATERIAL HANDLING SHALL BE WIPED WITH DISINFECTANT EACH TRIP FROM THE CONSTRUCTION ZONE INTO THE OCCUPIED AREA. COVER CARTS TIGHTLY BEFORE REMOVING FROM CONTAINED AREA.
5. SITE MAINTENANCE - REMOVE ALL DEBRIS DAILY AND MAINTAIN ALL DEBRIS / EQUIPMENT PATHS FREE FROM DUST. ROUTINELY MOP THE INSIDE OF THE CONSTRUCTION AREA. DESIGNATE ONE WORKER TO KEEP OCCUPIED TRAFFIC AREAS FREE FROM DUST AND ACCUMULATED DEBRIS. COLLECT LOOSE DEBRIS WITH A HEPA VACUUM CLEANER, FULLMAN / HOLT MODEL 86A5B OR SIMILAR. MAINTAIN A STICKY WALK-OFF MAT AT THE EXIT TO THE CONSTRUCTION SPACE(S).
6. NEGATIVE PRESSURE - EXHAUST NEGATIVE AIR TO OCCUPIED CORRIDORS WITH HEPA FILTERED AIR MACHINE (2,000 CFM), ABATEMENT TECHNOLOGIES PAS 2000 OR SIMILAR. ATTACH CEILING MOUNTED HEPA FILTER TO EACH DISCHARGE DUCT, FLANDERS PART TH52E298G-007-F12A OR SIMILAR. VERIFY FILTER PERFORMANCE WITH A LASER PARTICLE COUNTER. VERIFY NO GREATER THAN ZERO PER CUBIC-METER FOR PARTICLES SIZED LESS THAN 0.5 MICRONS. MAINTAIN -0.02" W.G. NEGATIVE PRESSURE RELATIVE TO OCCUPIED OR SUITE, 24 HOURS/DAY FOR THE DURATION OF THE PROJECT.
7. NEGATIVE PRESSURE SHALL BE MONITORED CONTINUOUSLY WITH A PROPERLY CALIBRATED PRESSURE DIFFERENTIAL MONITOR LOCATED IN THE ANTEROOM (OMNIGUARD 4 OR SIMILAR). WHEN NECESSARY TO CONDUCT TEMPORARY SUPPORT WORK BEYOND THE PRIMARY WORK AREA, EXHAUST NEGATIVE AIR TO OCCUPIED HOSPITAL WITH HEPA FILTERED AIR MACHINES (MODEL NORVAIR 2,000 OR SIMILAR, RATED 2,000 CFM). VERIFY FILTER PERFORMANCE WITH LASER PARTICLE COUNTER; PERFORMANCE CRITERIA NO GREATER THAN ZERO PARTICLES PER CUBIC METER FOR PARTICLES LESS THAN 0.5 MICRONS IN SIZE.
8. PROTECTING THE VENTILATION SYSTEM - TURN AIR HANDLER OFF AND LOCK OUT FAN FOR THE DURATION OF THE PROJECT. BLANK OFF DUCTWORK NOT TO BE DEMOLISHED WITH SHEET-METAL OR ALTERNATE SUITABLE MEANS TO PREVENT THE MIGRATION OF DUST INTO THE SYSTEM.

ADDITIONAL CONSIDERATIONS

THESE PROCEDURES ARE SPECIFIC FOR THE UNIT SPD RENOVATION. ALL CONSTRUCTION ACTIVITY MUST ULTIMATELY COMPLY WITH VA INFECTION CONTROL MEASURES, INCLUDING GENERAL REQUIREMENTS (FOR CONSTRUCTION), 09-08M, SECTION 01 00 00.

- A. VERIFY BARRIER LOCATION WITH THE VA BEFORE CONSTRUCTION. MAINTAIN SUFFICIENT SPACE FOR CORRIDOR PATIENT BED TRAFFIC.
- B. DEMOLITION IS NOT TO BEGIN UNTIL BARRIERS ARE REVIEWED / INSPECTED AND APPROVED BY INFECTION CONTROL.
- C. NEGATIVE PRESSURE IS NOT TO BE REMOVED UNTIL THE PROJECT IS SUBSTANTIALLY COMPLETE; I.E. WALLS AND FLOORS FINISHED, CEILINGS INSTALLED, AND NO SITE CAREFULLY CLEANED. NEGATIVE PRESSURE IS NOT TO BE REMOVED UNTIL THE SITE IS REVIEWED AND INSPECTED BY INFECTION CONTROL.
- D. INFECTION CONTROL TO COMPLETE IC PERMIT BEFORE STARTING WORK.

ACTIVITY OUTSIDE PRIMARY CONTAINMENT ZONES - FOR ALL CONSTRUCTION ACTIVITY REQUIRED OUTSIDE PRIMARY WORK ZONED (I.E. ELECTRICAL, CONDUIT, HVAC, OR PLUMBING RE-CONFIGURATION), MAINTAIN A CONTAINED AREA AND NEGATIVE PRESSURE, VIA EITHER A HEPA FILTERED PORTABLE CONTROL CUBE OR TEMPORARY PLASTIC ENCLOSURE UNDER NEGATIVE PRESSURE.

CLEANLINESS OF WORK AREA - THE WORK AREA SHALL BE CAREFULLY CLEANED DAILY OR MORE FREQUENTLY BY THE CONTRACTOR. SURFACES WITHIN THE WORK AREA SHALL BE KEPT FREE OF VISIBLE DUST AND DEBRIS TO THE GREATEST EXTENT FEASIBLE).

THE CONTRACTOR WILL HAVE ONE WORKER WHOSE PRIMARY RESPONSIBILITY IS TO MAINTAIN THE CLEANLINESS OF THE WORK AREA AND THE HALL IMMEDIATELY SURROUNDING THE ENTRANCE.

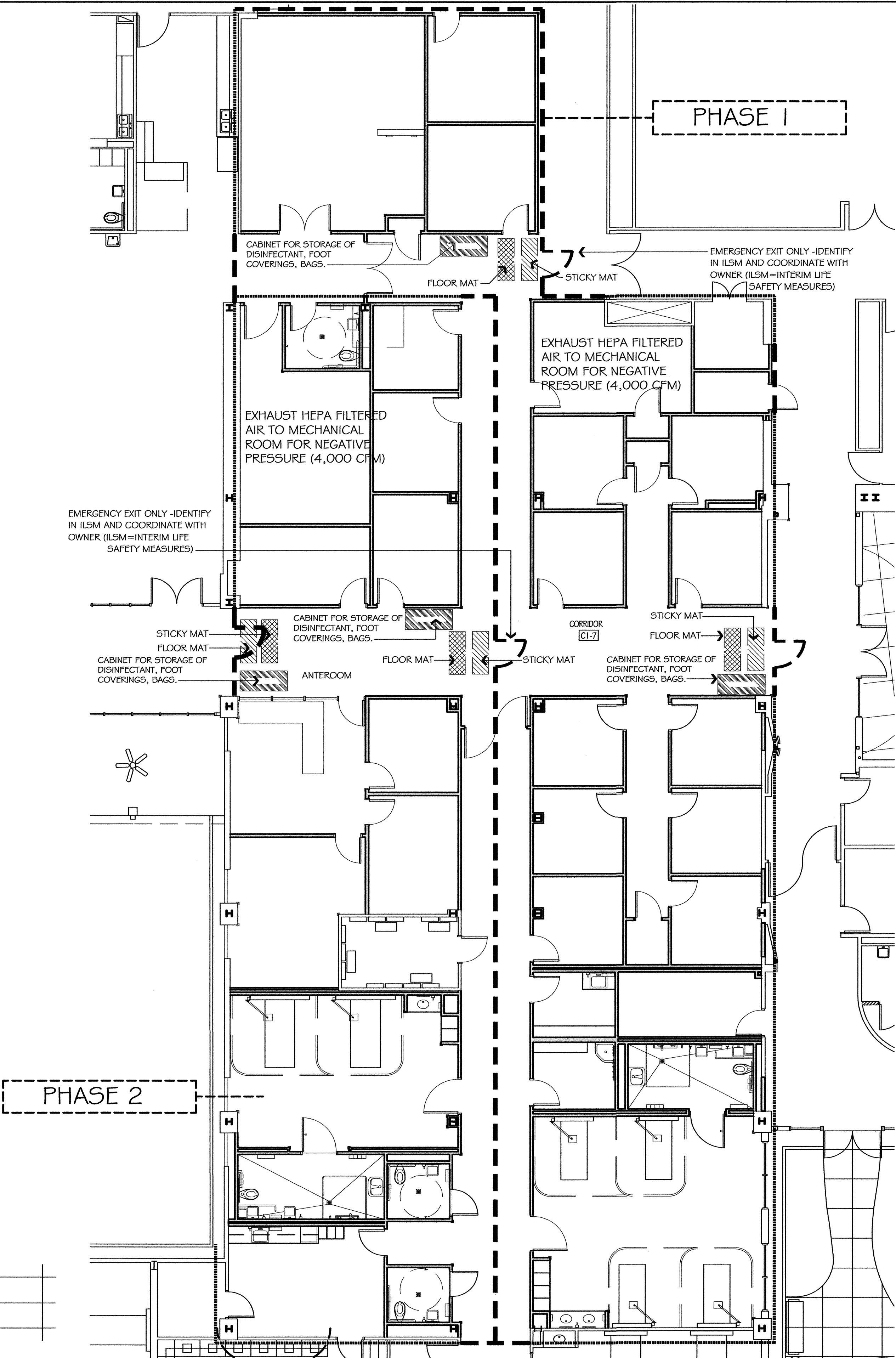
NEW VENTILATION COMPONENTS - VISUAL INSPECTION OF POROUS AND NON-POROUS DUCTWORK COMPONENTS (INCLUDING VAV BOXES) MUST BE MONITORED BY THE CONTRACTOR AND REVIEWED BY THE VA TO ENSURE THAT THE SYSTEM IS VISIBLY CLEAN. THE SYSTEM HAS EXCESSIVE DUST OR DEBRIS WHEN AN ACCUMULATION OF PARTICLES CAN BE OBSERVED IN THE DUCTWORK. SYSTEM CLEANING PROCEDURES AS INDICATED SHALL BE ADHERED TO DURING THE GB RENOVATION.

- A. ANY INTERNAL EXPOSED MASTIC SEALANT SHALL BE REMOVED PRIOR TO INSTALLING NEW DUCTWORK.
- B. THE LIGHT COATING OF OIL ON MACHINE FORMED SHEET METAL DUCT WORK IS TO BE REMOVED
- C. DISCOLORATION MARKS FROM PLASMA CUTTING PROCESS MUST BE REMOVED

- D. AFTER FABRICATION AND BEFORE DUCTWORK IS INSTALLED IT SHALL BE WIPED CLEAN AND WRAPPED VIA SUITABLE METHOD TO MAINTAIN CLEAN DUCTWORK DURING DELIVERY TO AND STORAGE AT THE JOBSITE. AREA PROVIDED FOR STORAGE AT THE JOBSITE SHALL BE CLEAN AND DRY, WITH MINIMAL EXPOSURE TO DUST.
- E. AFTER DUCTWORK HAS BEEN INSTALLED, THE OPEN ENDS OF DUCTWORK SHALL BE COVERED WITH PLASTIC OR ALTERNATE SUITABLE MEANS TO PREVENT INFILTRATION OF DUST AND DEBRIS.
- F. IF VACUUMING IS REQUIRED TO ADEQUATELY CLEAN OR RE-CLEAN NEW DUCTWORK, THE VACUUM CLEANER MUST BE HEPA FILTERED AND CAPABLE OF ACHIEVING A MINIMUM OF 40 INCHES OF WATER GAGE.
- G. THE CLEANLINESS OF DUCTWORK WILL BE RANDOMLY MONITORED BY THE VA OR THE VAS REPRESENTATIVE.

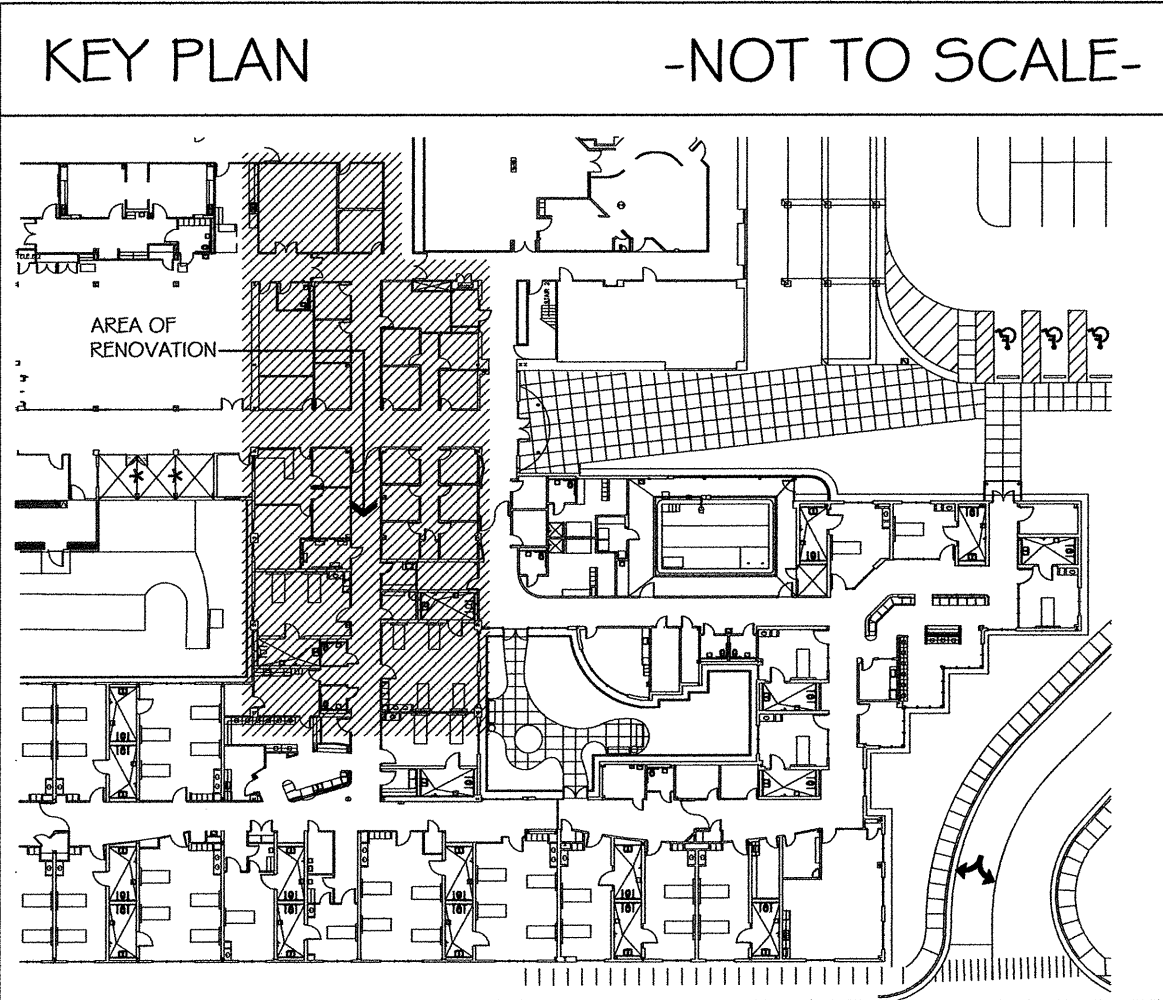
MANAGING POTENTIAL WATER EVENTS - THE CONTRACTOR IS RESPONSIBLE FOR RESPONDING TO WATER LEAKS IN THE HOSPITAL IF THEY OCCUR AS A RESULT OF EXPANSION ACTIVITIES.

- A. RENOVATION FOREMAN OR PERSON DESIGNATED BY RENOVATION FOREMEN SHALL BE READILY ACCESSIBLE VIA DEEPER OR CELL PHONE IN THE EVENT THAT WATER INTRUSIONS INTO THE HOSPITAL ARE IDENTIFIED BY VA STAFF.
- B. PATIENT AREAS THAT HAVE BECOME WET SHALL BE DRIED WITHIN 48 HOURS TO PREVENT MOLD GROWTH
- C. CONTRACTOR SHALL USE APPROPRIATE MEANS TO DEHUMIDIFY / DRY AFFECTED AREAS, INCLUDING BUT NOT LIMITED TO DEHUMIDIFIERS, PUMPS, OR OTHER APPROPRIATE MEANS.
- D. CONTRACTOR IS RESPONSIBLE FOR CONDUCTING ACTIVITIES IN COMPLIANCE WITH VA INFECTION CONTROL CONSTRUCTION POLICY. PURSUANT TO PIEDMONT POLICY, DRYING ACTIVITIES MAY REQUIRE CONSTRUCTION OF BARRIERS, NEGATIVE PRESSURE, AND DETAILED CLEANING OF THE SPACE.
- E. WALLBOARD, INSULATION (INCLUDING DUCT INSULATION), CEILING TILES, OR CARPET IN PATIENT CARE AREAS THAT REMAINS WET FOR GREATER THAN 48 HOURS SHALL BE DISCARDED AND REPLACED.



LEGEND	
	INFECTION CONTROL / CONSTRUCTION EXISTING WALL TO BE USED AS BARRIER. TOP OUT WALL TO DECK IF NECESSARY. (SEE NOTE 1)
	INFECTION CONTROL / CONSTRUCTION CONSTRUCT WALLBOARD BARRIER FROM FLOOR TO DECK. (SEE NOTE 1)

NOTE: CONTAINED AREA UNDER CONSTRUCTION IS APPROX. 9,332 S.F.



INFECTION CONTROL PLAN		P-1
SCALE: 1/8"=1'-0"		A0.4

REVISIONS:	DATE:	DRAWN BY:
		J. OLIVER
		CHECKED BY:
		R. S. VIRGO



VIRGO GAMBILL
ARCHITECTS
2531 CENTER WEST PARKWAY,
SUITE 200
AUGUSTA, GEORGIA 30909
(706) 736-3661

MEMBERS OF THE
AMERICAN INSTITUTE
OF ARCHITECTS

THIS DOCUMENT IS PROPERTY OF VIRGO GAMBILL ARCHITECTS. THE UNAUTHORIZED REPRODUCTION, COPYING, OR OTHERWISE USE OF THIS DOCUMENT IS STRICTLY PROHIBITED AND ANY INFRINGEMENT THEREUPON IS SUBJECT TO LEGAL ACTION. 2007 © VIRGO GAMBILL ARCHITECTS

APPROVED BY:
MEDICAL CENTER DIRECTOR
APPROVED BY:
FACILITY MANAGEMENT SERV LINE EXEC

PROJECT TITLE:
RENOVATE "E" WING BUILDING 801, DOWNTOWN DIVISION AUGUSTA, GEORGIA
DRAWING TITLE:
INFECTION CONTROL PLAN

DATE:
APRIL 29, 2011
VA PROJECT NO.
509-318E
DRAWING NO.
801-A0.4
DWG.
5 of 44

Department of Veterans Affairs
VAMC Augusta, Georgia
Engineering Department (138)