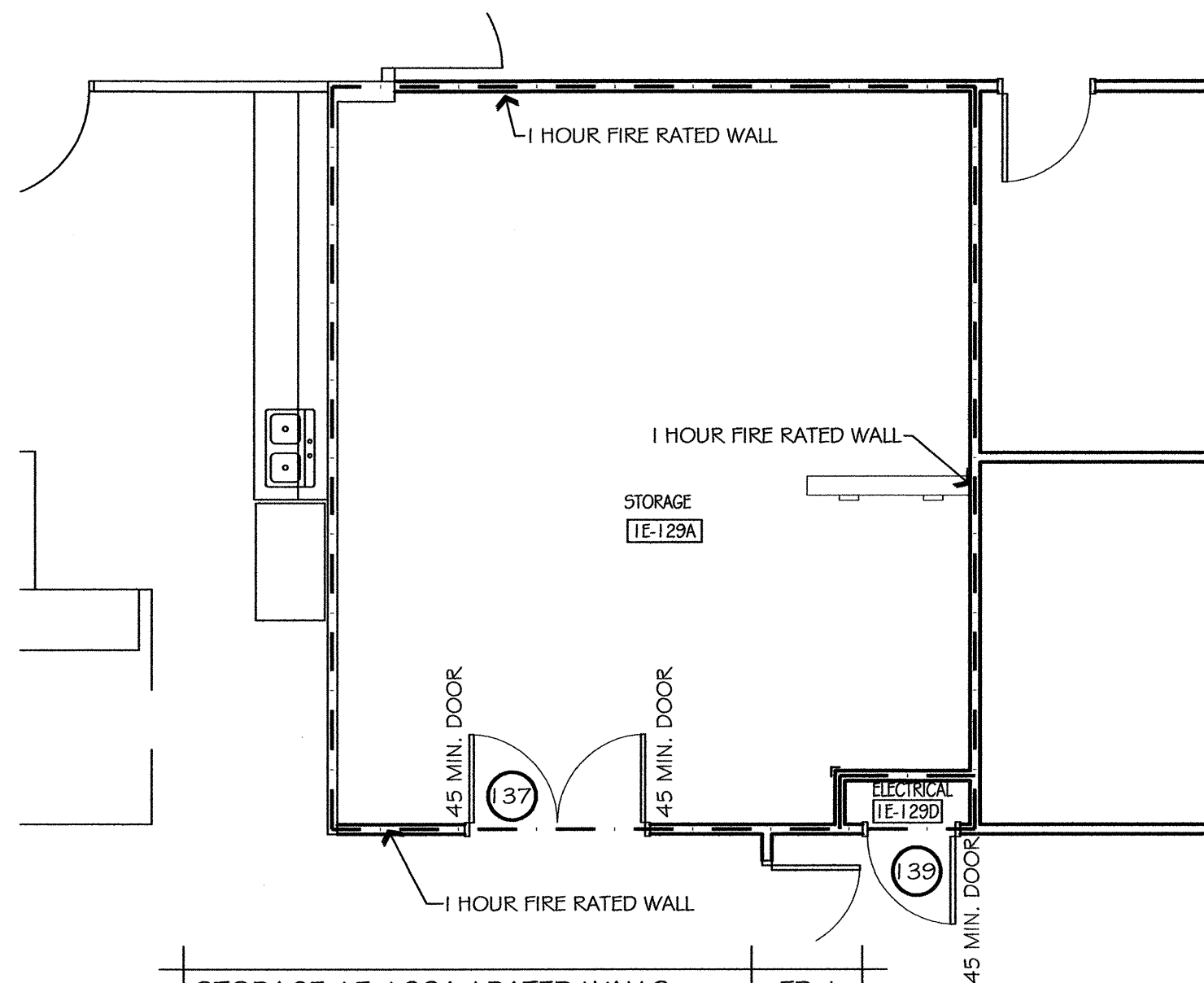


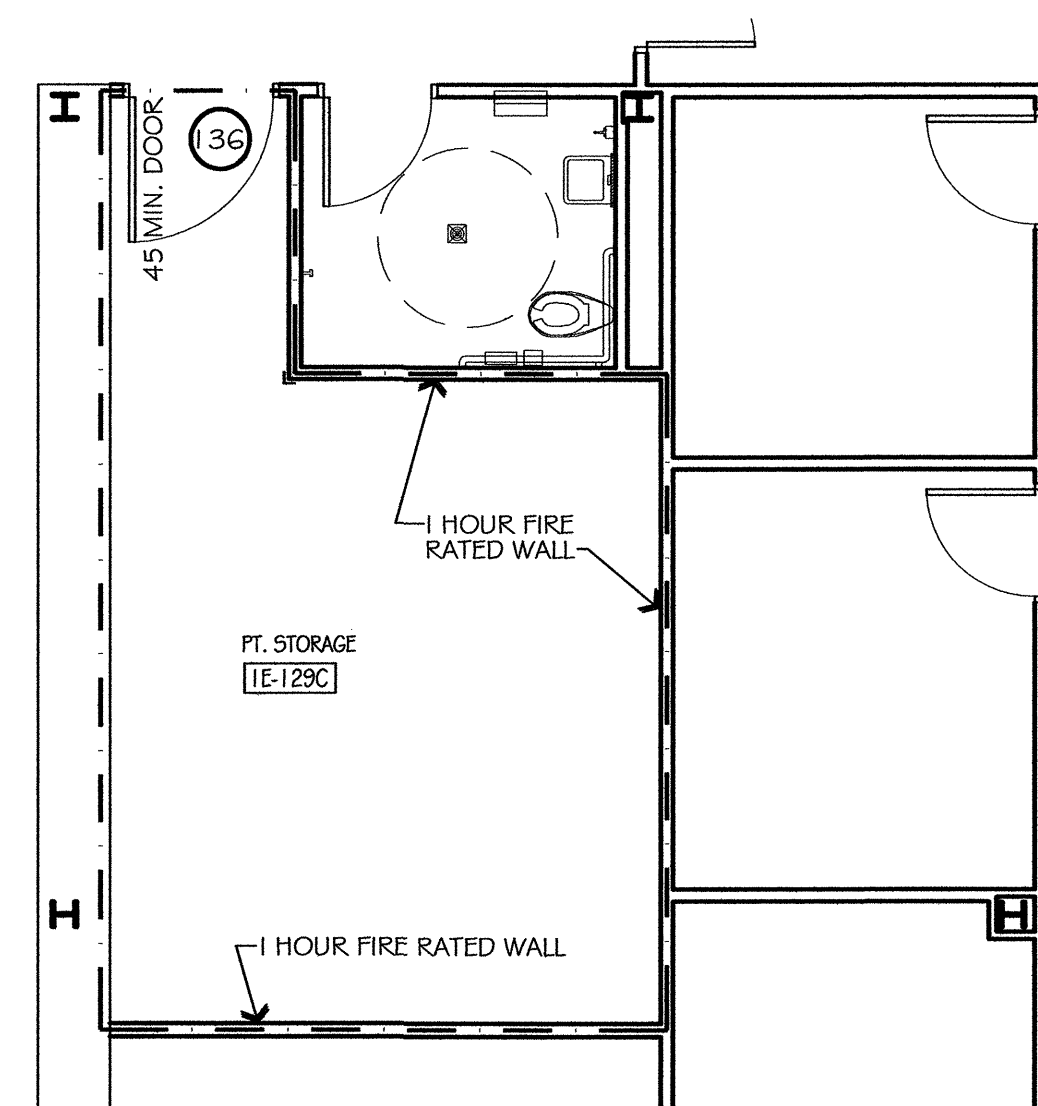
A CHASE WALL (SEE ROOM SCHEDULE FOR WALL FINISH)
B-1 EXTEND & SEAL GYP. BOARD TO UNDERSIDE OF DECK FOR ONE HOUR RATED FIRE WALL

C ONE HOUR RATED FIRE WALL
D SEE FINISH SCHEDULE FOR TILED AREAS WHICH REQUIRE 5/8" CEMENTIOUS BOARD IN TILED ZONE AND 5/8" MOISTURE RESISTANT CODE GYP. BOARD ABOVE - TAPE AND SPACKLE ALL JOINTS

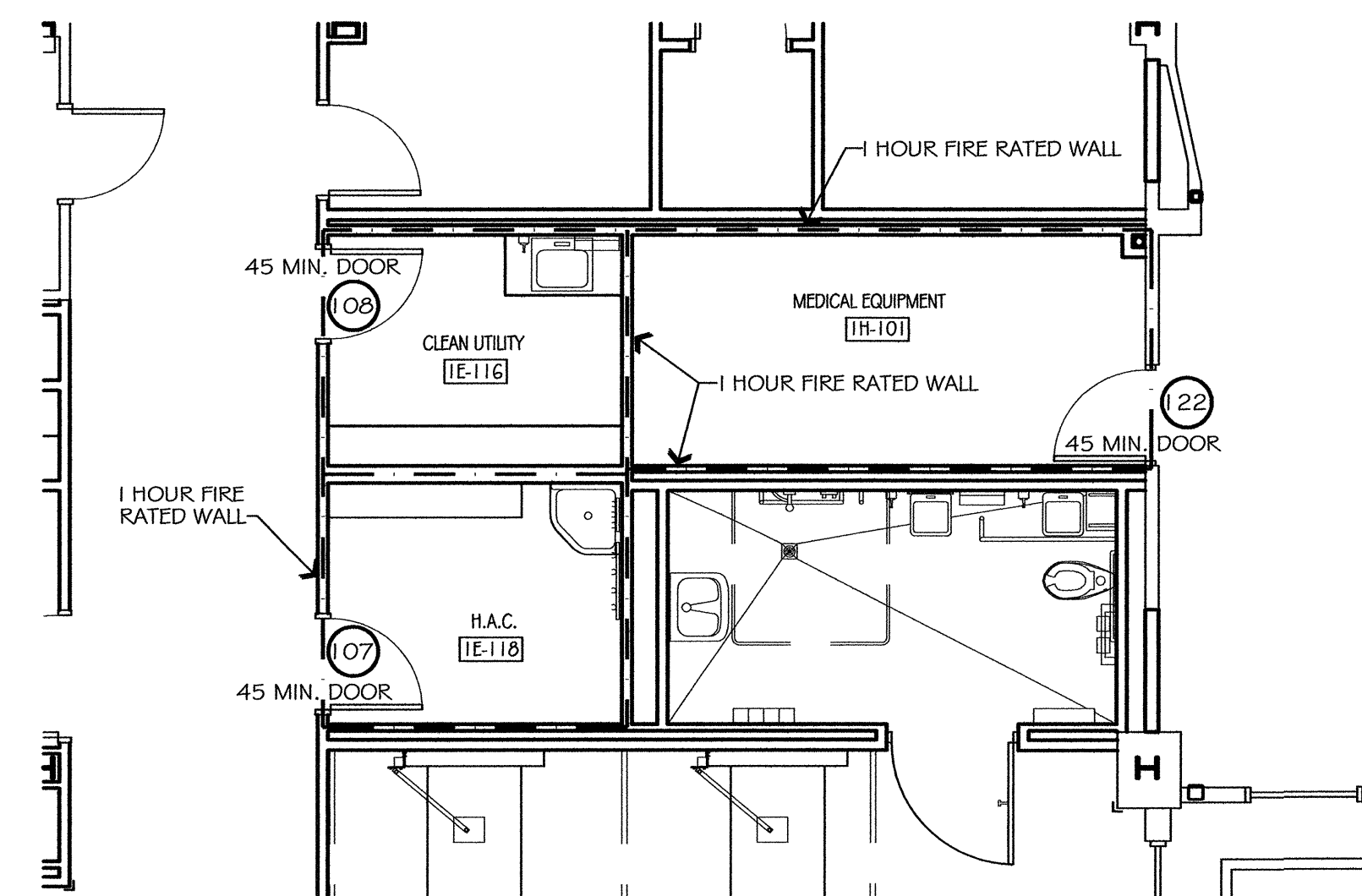
WALL TYPES	WT
SCALE: 1-1/2"=1'-0"	A1.3



STORAGE 1E-129A / RATED WALLS	FP-1
SCALE: 3/16"=1'-0"	A1.3



PT. STORAGE 1E-129C / RATED WALLS	FP-2
SCALE: 3/16"=1'-0"	A1.3



STORAGE 1E-129A / RATED WALLS	FP-1
SCALE: 3/16"=1'-0"	A1.3

GENERAL NOTES:

- NOTE: SEE FINISH SCHEDULE FOR TILED AREAS WHICH REQUIRE 5/8" CEMENTIOUS BOARD IN TILED ZONE AND 5/8" MOISTURE RESISTANT CODE GYP. BOARD ABOVE - TAPE AND SPACKLE ALL JOINTS
- COORDINATE EQUIPMENT AND MILLWORK LOCATIONS WITH WALL REINFORCEMENT. SEE DETAIL.
- PROVIDE 18 GA. OR HEAVIER STEEL STUD AT ALL OUTSIDE CORNERS OF CORRIDOR WALLS.
- PROVIDE CONTINUOUS FIRE RATED SEALANT AT THE PERIMETERS OF ALL SMOKE/FIRE RATED PARTITIONS INCLUDING THE TOP AND BOTTOM EDGES OF GYPSUM BOARD, BOTH SIDES OF WALL.
- PROVIDE BACKING FOR ITEMS SUCH AS TOILET ACCESSORIES, TOILET PARTITIONS, DOOR STOPS, DOOR BUMPERS, ETC.
- ONE HOUR FIRE RATED WALLS WHERE INDICATED ON PLANS: U-425
- LABEL ALL FIRE RATED PARTITIONS ABOVE CEILING WITH "1 HR. FIRE RATED PARTITION - SEAL ALL PENETRATIONS" THIS LABEL MUST BE STENCILED ON BOTH SIDES OF WALL @ 8'-0" O.C.
- TWO HOUR FIRE RATED WALLS WHERE INDICATED ON PLANS: U-906
- ALL CORRIDOR WALLS SHALL HAVE GYP. BOARD EXTENDED TO DECK ON BOTH SIDES TO PROVIDE A SMOKE TIGHT BARRIER
- ALL WALLS SHALL HAVE 5/8" VERY HIGH IMPACT ABUSE RESISTANT FIRE CODE GYP. BOARD BY USG UP TO 48" AFF.

LEGEND

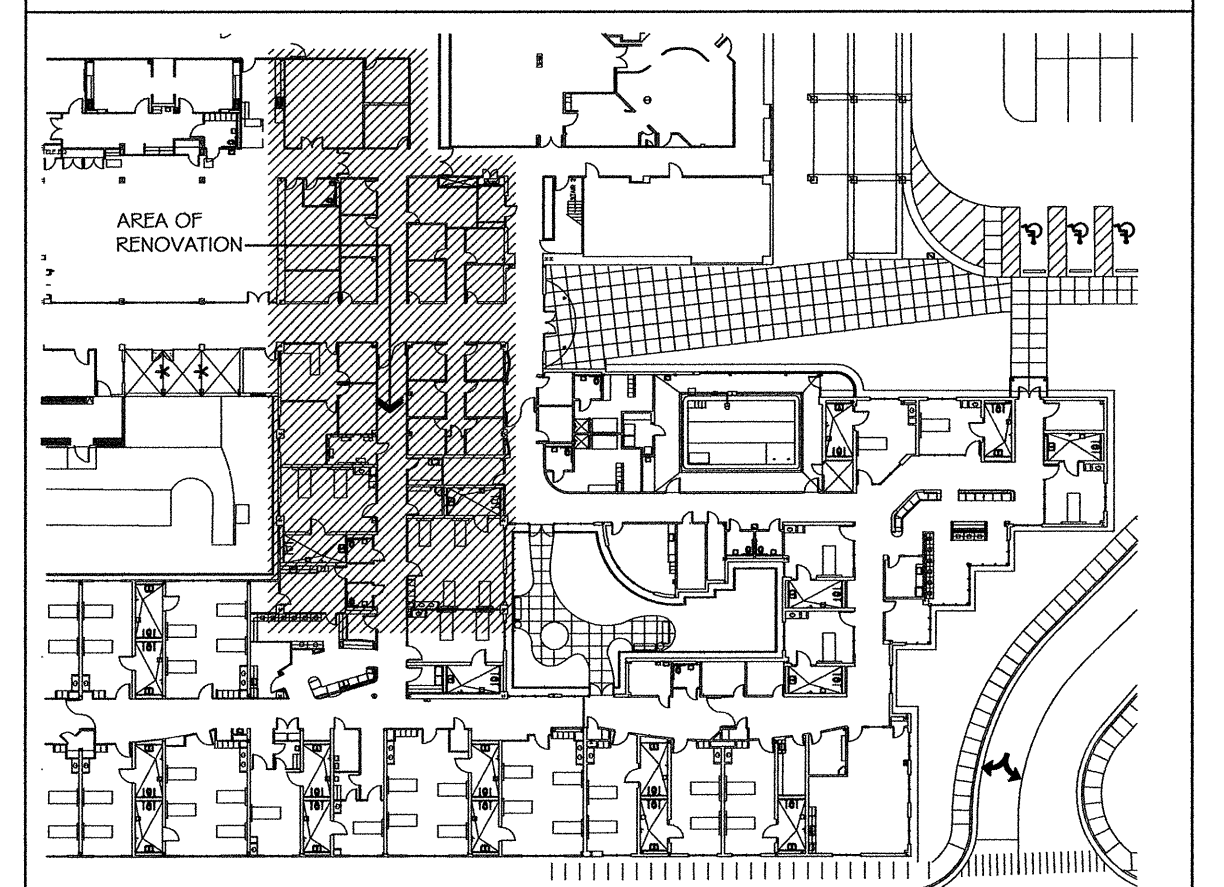
	NEW STUD WALLS
	EXISTING WALLS TO REMAIN
	ONE HOUR FIRE / SMOKE PARTITION (U-425) SEAL TO UNDERSIDE OF DECK (SEE SHEET A1.3 FOR LOCATION OF RATED WALLS)
	EXISTING STRUCTURAL STEEL COLUMN
	PUSH PAD FOR POWERED DOOR OPENER
	H.C. ACCESSIBLE SHOWER CONTROLS IN PATIENT LITTER BATHS
	FIRE EXTINGUISHER
	SEE SHEET A-9.1 / A-9.2 FOR WALL TYPE DETAILS/SECTIONS
	INTERIOR ELEVATIONS
	WINDOW/ CURTAIN WALL NUMBER
	DOOR NUMBER

NOTES:

- ALL CORRIDOR WALLS, RATED OR NON-RATED, SHALL HAVE 5/8" GYP. BOARD CONTINUOUS (BOTH SIDES OF WALL) ABOVE CEILINGS TO ROOF DECK AND SEALED. ALL PENETRATIONS SHALL BE SEALED TO PREVENT PASSAGE OF SMOKE.
- ALL WALLS SHALL BE TYPE "A" UNLESS OTHERWISE NOTED

KEY PLAN

-NOT TO SCALE-



REVISIONS:	DATE:

DRAWN BY:	J. OLIVER
CHECKED BY:	R. S. VIRGO



VIRGO GAMBILL
 ARCHITECTS
 2531 CENTER WEST PARKWAY,
 SUITE 200
 AUGUSTA, GEORGIA 30909
 (706) 736-3661

MEMBERS OF THE
 AMERICAN INSTITUTE
 OF ARCHITECTS

THIS DOCUMENT IS PROPERTY OF VIRGO GAMBILL ARCHITECTS. THE UNAUTHORIZED REPRODUCTION, COPYING, OR OTHERWISE USE OF THIS DOCUMENT IS STRICTLY PROHIBITED AND ANY INFRINGEMENT THEREOF IS SUBJECT TO LEGAL ACTION. 2007 © VIRGO GAMBILL ARCHITECTS

APPROVED BY:	MEDICAL CENTER DIRECTOR
APPROVED BY:	FACILITY MANAGEMENT SERV LINE EXEC

PROJECT TITLE:	RENOVATE "E" WING BUILDING 801, DOWNTOWN DIVISION AUGUSTA, GEORGIA
DRAWING TITLE:	FIRE RATED WALL PLAN / WALL TYPES

DATE:	APRIL 29, 2011
VA PROJECT NO.	509-318E
DRAWING NO.	801-A1.3
DWG.	8 of 44

Department of Veterans Affairs
 VAMC Augusta, Georgia
 Engineering Department (138)