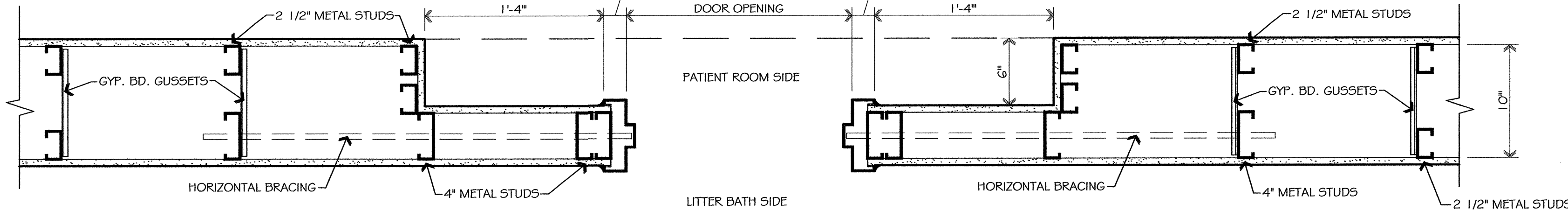
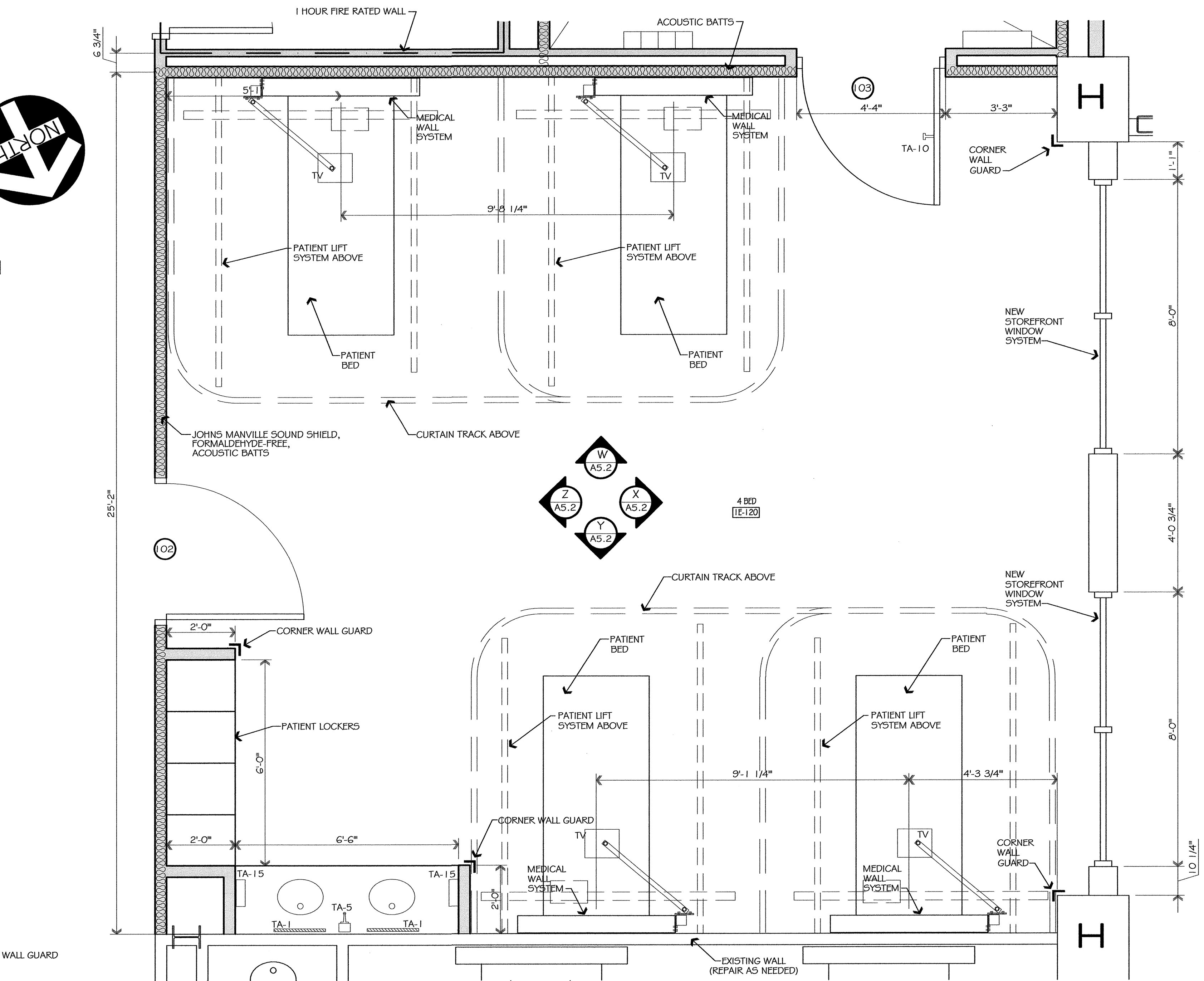


TOILET ACCESSORIES					
MK	DESCRIPTION	MTG HGT	MK	DESCRIPTION	MTG HGT
TA-1	24" x 36" MIRROR, HANDICAP TILT BOBRICK B-293	40" TO BOTTOM	TA-14	SOAP HOLDER BOBRICK B-4390 (SEE N/A5.1 & 5/A5.2)	
TA-2	PAPER TOWEL DISPENSER/RECEPTACLE BOBRICK B-369 (RECESSED)	44" TO DISPENSER	TA-15	PAPER TOWEL DISPENSER BOBRICK B-359	40" MAX. TO CENTER
TA-3	TOILET PAPER DISPENSER SURFACE MTD DOUBLE ROLL W/ SOLID SHELF 6" BOBRICK B-28407.60	20" TO CENTER	TA-16	SANITARY NAPKIN DISPOSAL BOBRICK B-354	33" TO CENTER
TA-4	1 1/2" DIA. GRAB BARS - ONE PIECE 36"x 54" BOBRICK B-68137	33" TO 36" TO CENTER	TA-17	MIRROR (18"W x 36"H) & SHELF (5" x 18") BOBRICK B-292.183G	N/A
TA-5	LIQUID SOAP DISPENSER - SURFACE MTD BOBRICK B-4112	44" TO DISPENSER	TA-18	36" x 36" MIRROR BOBRICK B-290-363G	N/A
TA-6	TOILET PAPER DISPENSER - SINGLE ROLL BOBRICK B-2730	20" TO CENTER	TA-19	PAPER TOWEL DISPENSER BOBRICK B-26212	40" TO BOTTOM
TA-7	SEMI-RECESSED WASTE RECEPTACLE BOBRICK B-262	N/A	TA-20	1 1/2" DIA. GRAB BARS - PEENED BOBRICK B-61061.99 x 48	36" TO BOTTOM
TA-8	STAINLESS STEEL SHELF 6"W x 24"L BOBRICK B-296x24	54" OR NOTED TO BOTTOM	TA-21	1 1/2" DIA. GRAB BARS - PEENED (MOUNT VERTICAL) BOBRICK B-6106.999 x 24 (SEE N/A5.1 & 5/A5.2)	36" TO CENTER
TA-8 (CUSTOM)	STAINLESS STEEL CANISTER STORAGE (TA-8) W/ (5) 6" x 6" HIGH DIVIDERS	AS NOTED	TA-22	SHOWER CURTAIN ROD BOBRICK B-207x48"	72" TO CENTER
TA-9	REMOVABLE BACK REST	N/A	TA-23	1 1/2" DIA. GRAB BARS - PEENED (MOUNT HORIZ.) BOBRICK B-6806.99x36	2'-9" TO CENTER
TA-10	HANDICAP TOWEL/ROBE HOOK BOBRICK B-76717	54" TO CENTER	TA-24	1 1/2" DIA. GRAB BARS - PEENED (MOUNT VERT.) BOBRICK B-6806.99x36	2'-9" TO HORI. CL.
TA-11	54"L x 33"H GRAB BAR WITH OUTRIGGER - 680G SERIES. 1-1/2" DIA. PEENED. MUST HAVE APPROVED SHOP DRAWINGS PRIOR TO MANUFACTURE.		TA-25	S.S. CLOTHES HOOK STRIP, SURFACE MOUNTED BOBRICK B-985	5'-6" TO HORI. CL.
TA-12	SURFACE MOUNTED PAPER CUP DISPENSER BOBRICK B-235	N/A	TA-26	S.S. SHELF 12" x 16" W/ 1" W x 1/8" THICK S.S. BRACKETS	2'-10" TO TOP
TA-13	SHOWER CURTAIN ROD- B207- 60"	N/A	TA-27	1" SHAPED GRAB BAR - PEENED BOBRICK B-6856 x32	2'-9" TO HORI. CL.

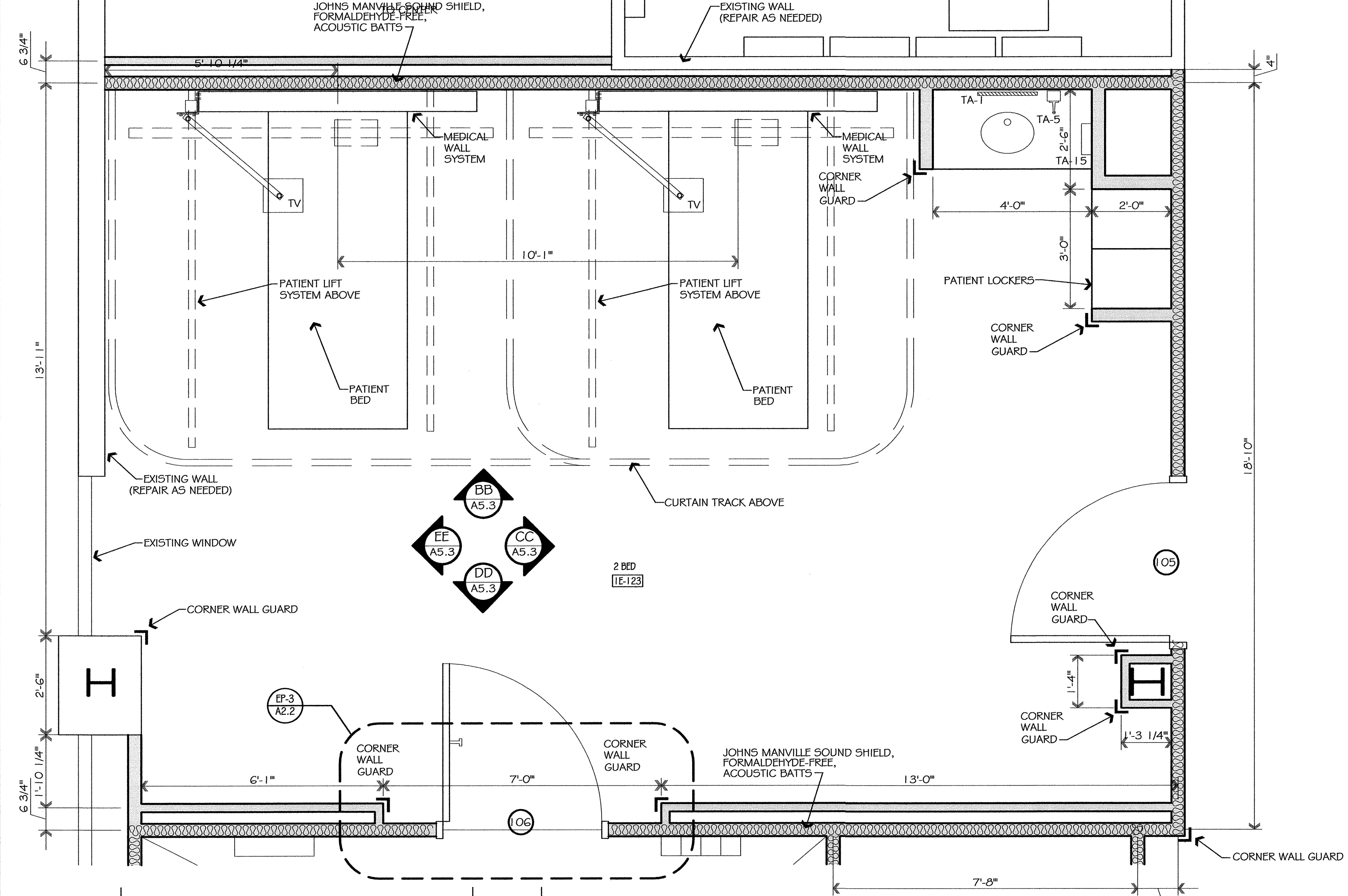
- NOTES:
1. CONTRACTOR TO PROVIDE REED BLOCKING TO SUPPORT ALL TOILET ACCESSORIES (BY HANDRAILS TO SUPPORT MIN. FORCE OF 250 lbs)
 2. ALL FIXTURES, ACCESSORIES, MOUNTING HEIGHTS AND LOCATIONS ARE TO BE IN COMPLIANCE WITH THE "AMERICAN DISABILITIES ACT" OF 1990
 3. ALL TOILET ACCESSORIES TO BE STAINLESS STEEL WITH SATIN FINISH UNLESS NOTED OTHERWISE
 4. KEY ALL LOCKS TO VA SYSTEM
 5. ALL GRAB BARS TO BE 1-1/2" DIAMETER



LITTER BATH DOOR FRAMING DETAIL EP-3 A2.2



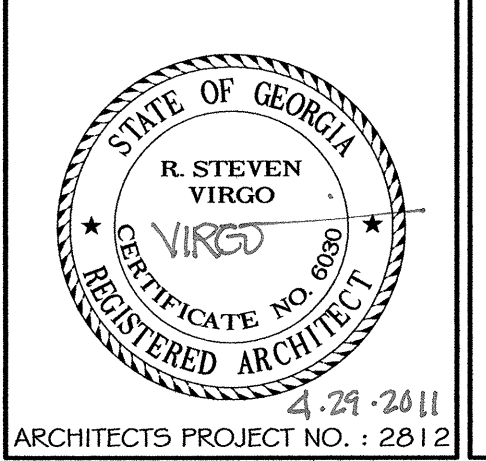
ENLARGED PATIENT ROOM PLAN EP-2 A2.2



ENLARGED PATIENT ROOM PLAN EP-1 A2.2

REVISIONS:	DATE:

DRAWN BY:	J. OLIVER
CHECKED BY:	R. S. VIRGO



VIRGO GAMBILL ARCHITECTS
 2531 CENTER WEST PARKWAY, SUITE 200
 AUGUSTA, GEORGIA 30909
 (706) 736-3661

MEMBERS OF THE AMERICAN INSTITUTE OF ARCHITECTS

THIS DOCUMENT IS PROPERTY OF VIRGO GAMBILL ARCHITECTS. THE UNAUTHORIZED REPRODUCTION, COPYING, OR OTHERWISE USE OF THIS DOCUMENT IS STRICTLY PROHIBITED AND ANY INFRINGEMENT THEREUPON IS SUBJECT TO LEGAL ACTION. 2007 © VIRGO GAMBILL ARCHITECTS

APPROVED BY:	MEDICAL CENTER DIRECTOR
APPROVED BY:	FACILITY MANAGEMENT SERV LINE EXEC

PROJECT TITLE:	RENOVATE "E" WING BUILDING 801, DOWNTOWN DIVISION AUGUSTA, GEORGIA
DRAWING TITLE:	ENLARGED FLOOR PLANS

DATE:	APRIL 29, 2011
VA PROJECT NO.	509-318E
DRAWING NO.	801-A2.2
DWG. 10 of 44	

