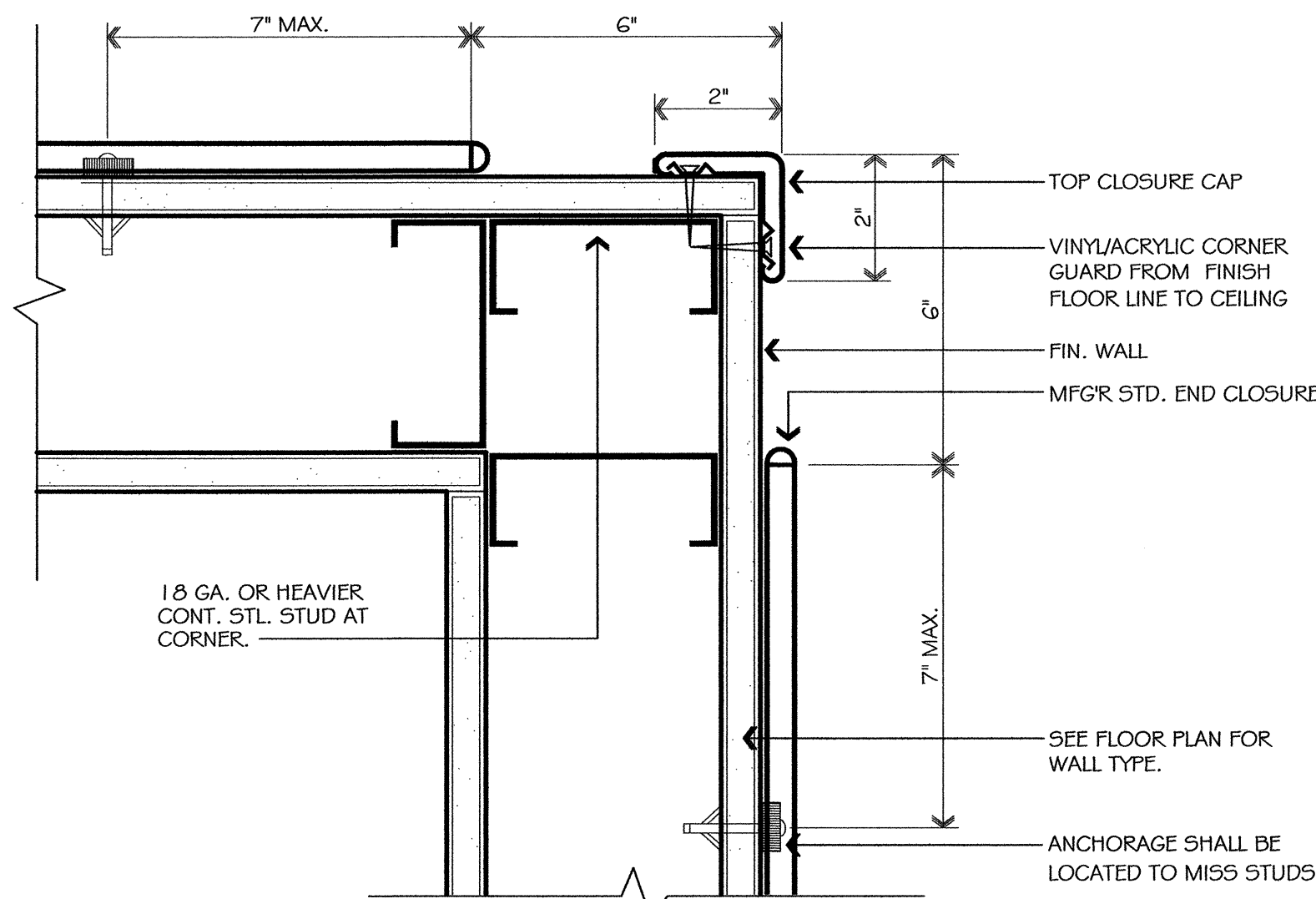
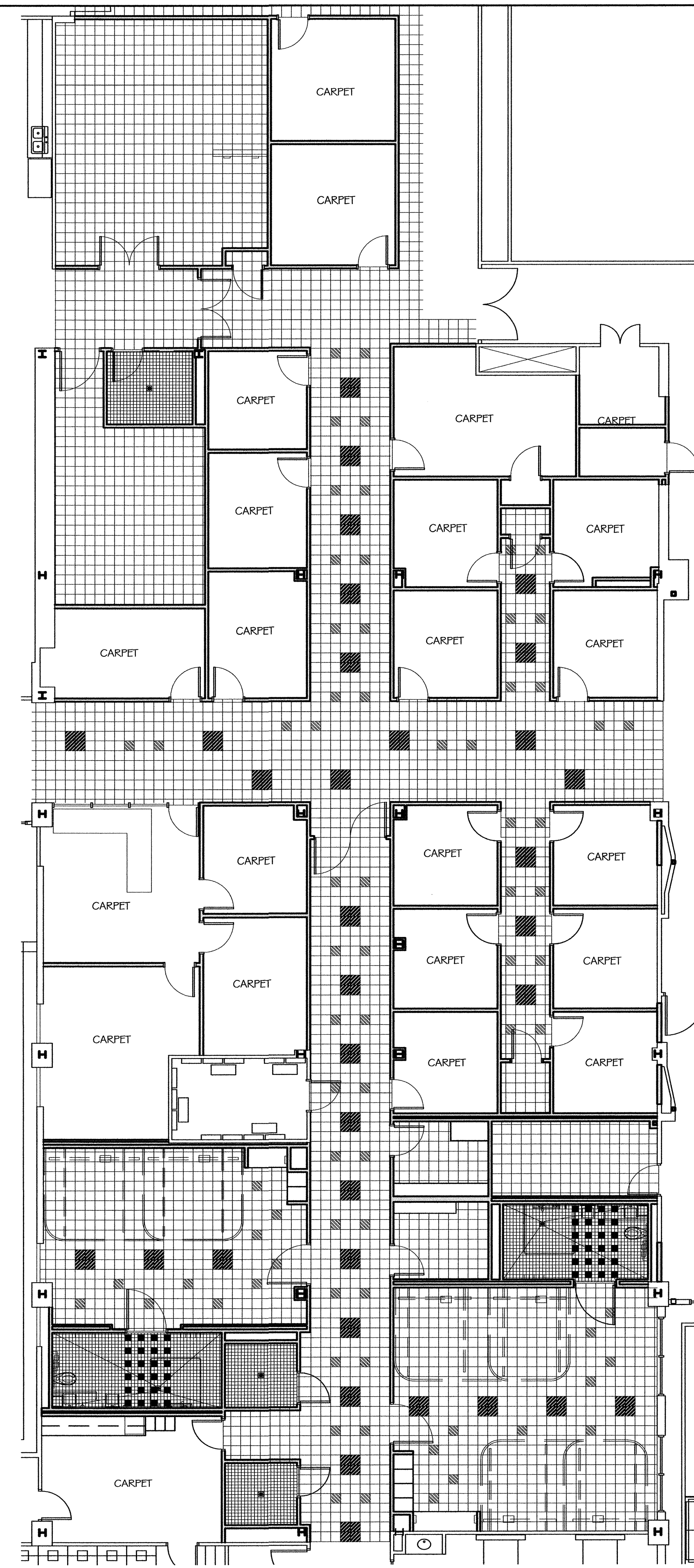


NOTE: RAILING MUST SUSTAIN 250 LBS. LATERAL LOAD FOR THE DURATION OF 5 MINUTES.	
BUMPER/BUMPER (TYPE I)	D-2
NOT TO SCALE	A4.3
HANDRAIL/BUMPER (TYPE II)	D-3
NOT TO SCALE	A4.3



CORNER GUARD DETAIL	D-1
NOT TO SCALE	A4.3

WALL PROTECTION PLAN	P-1
1/8" = 1'-0"	A4.4

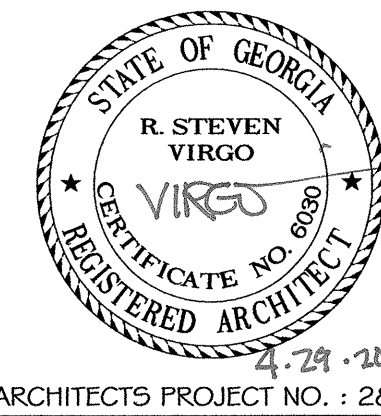


LEGEND	
	NO WORK IN THIS AREA UNDER THIS CONTRACT
	NEW WALLS
	EXISTING WALLS TO REMAIN
	12" X 12" RESILIENT TILE W/ 4" RESILIENT BASE
	4" X 4" CERAMIC FLOOR TILE W/ CERAMIC COVE BASE (COLOR 1)
	4" X 4" CERAMIC FLOOR TILE W/ CERAMIC COVE BASE (COLOR 1 WITH COLOR 2 ACCENTS)
	VCT COLOR #1 - FIELD COLOR. STANDARD COLOR TO BE USED UNLESS NOTED OTHERWISE
	VCT COLOR #2
	VCT COLOR #3
	TOLI UNOTESTA FLOORING #507
	TOLI UNOTESTA FLOORING #520
	CARPET - SEE SPECS
	WALL PROTECTION RAILS, TYPE #1, @ 30" AFF # 1 0" AFF - SEE DETAIL D-2/SHEET A4.3 & SPECIFICATIONS
	WALL PROTECTION RAILS, TYPE #2, @ 30" AFF # 1 0" AFF - SEE DETAIL D-3/SHEET A4.3 & SPECIFICATIONS
	FLOOR TO CEILING CORNER GUARDS - SEE DETAIL D-1/SHEET A4.3 AND SPECIFICATIONS
	FLOOR DRAIN W/ FLOOR SLOPED TOWARD DRAIN



FLOOR FINISH PLAN	P-1
1/8" = 1'-0"	A4.4

REVISIONS:	DATE:	DRAWN BY:
		J. OLIVER
		CHECKED BY:
		R. S. VIRGO



VIRGO GAMBILL ARCHITECTS
 2531 CENTER WEST PARKWAY, SUITE 200
 AUGUSTA, GEORGIA 30909
 (706) 736-3661

MEMBERS OF THE AMERICAN INSTITUTE OF ARCHITECTS

THIS DOCUMENT IS PROPERTY OF VIRGO GAMBILL ARCHITECTS. THE UNAUTHORIZED REPRODUCTION, COPYING, OR OTHERWISE USE OF THIS DOCUMENT IS STRICTLY PROHIBITED AND ANY INFRINGEMENT THEREOF IS SUBJECT TO LEGAL ACTION. 2007 © VIRGO GAMBILL ARCHITECTS

APPROVED BY:	PROJECT TITLE:	DATE:
MEDICAL CENTER DIRECTOR	RENOVATE "E" WING BUILDING 801, DOWNTOWN DIVISION AUGUSTA, GEORGIA	APRIL 29, 2011
APPROVED BY:	DRAWING TITLE:	VA PROJECT NO.
FACILITY MANAGEMENT SERV LINE EXEC	WALL PROTECTION & FLOOR FINISH PLAN	509-318E
		DRAWING NO.
		801-A4.3
		DWG. 15 of 44

VA

Department of Veterans Affairs
 VAMC Augusta, Georgia
 Engineering Department (138)