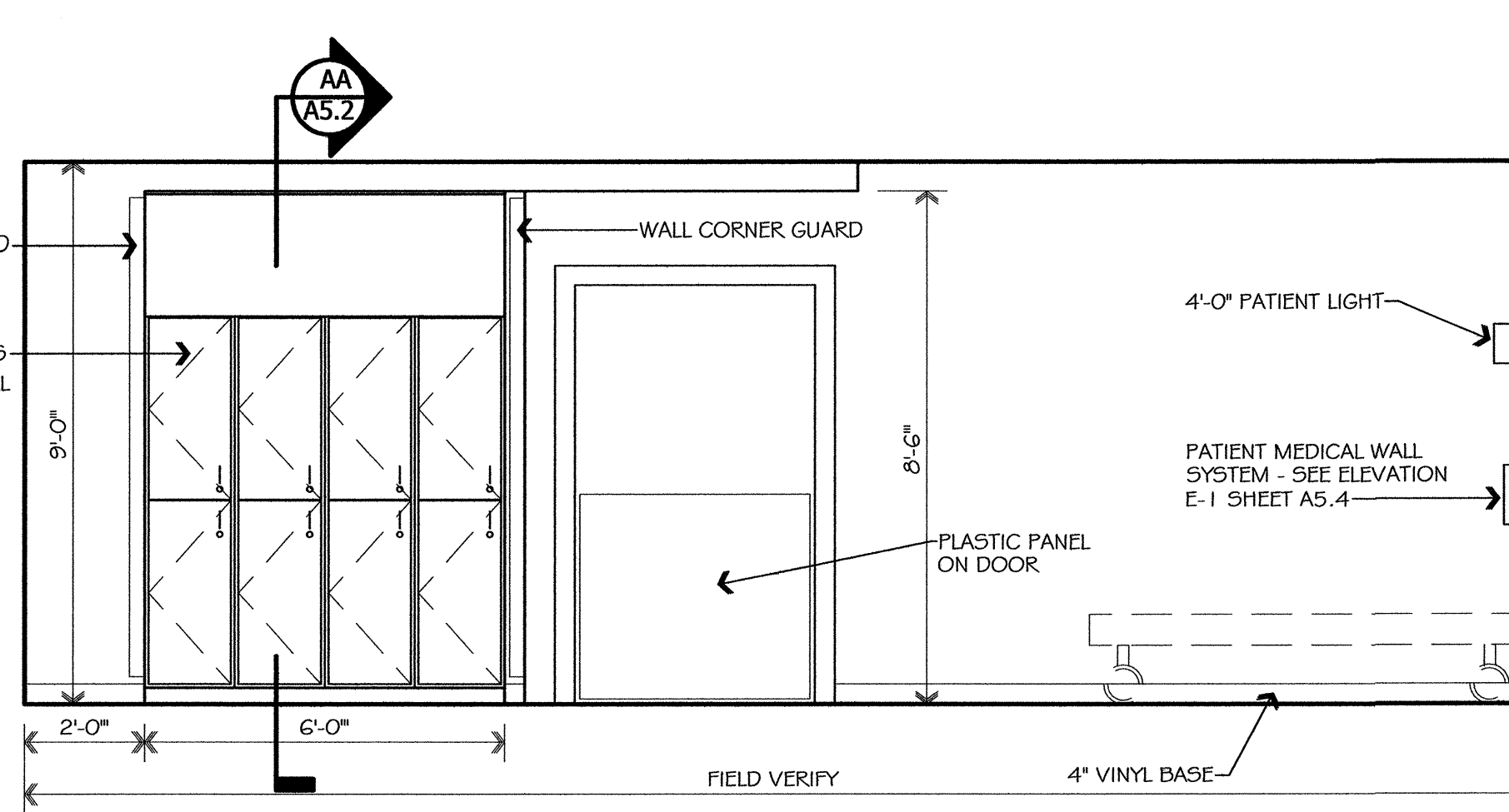
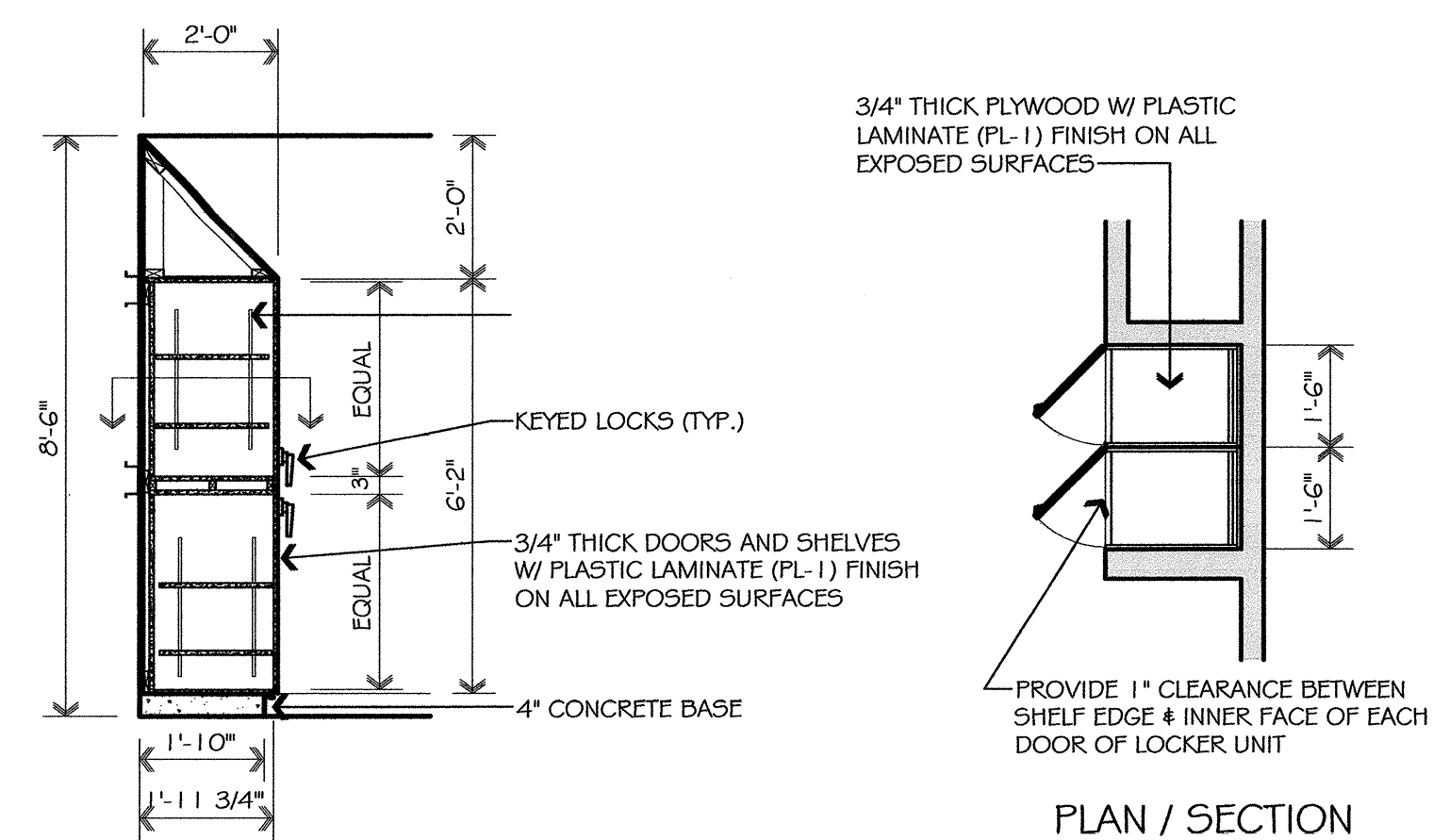


4 BED ROOM ELEVATION	Y
SCALE: 3/8"=1'-0"	A5.2

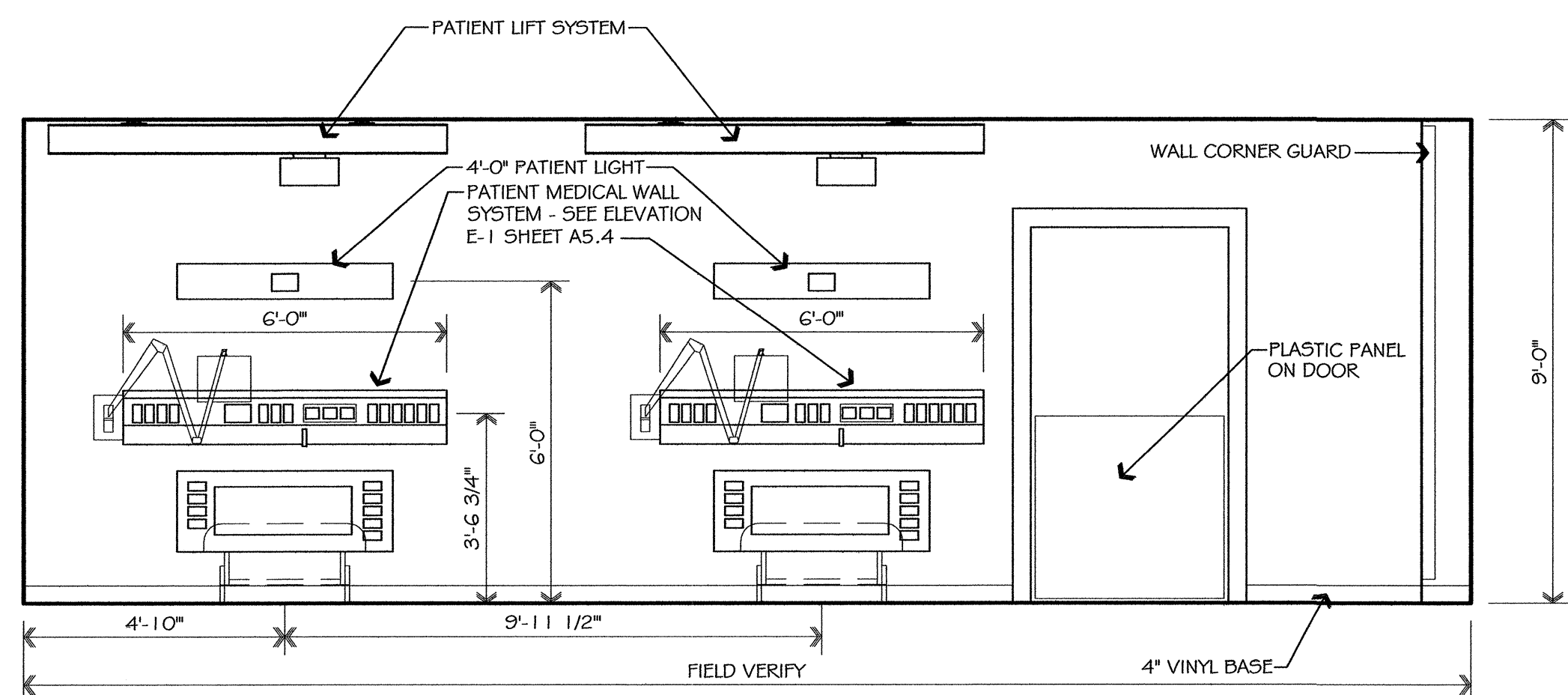


4 BED ROOM ELEVATION	Z
SCALE: 3/8"=1'-0"	A5.2

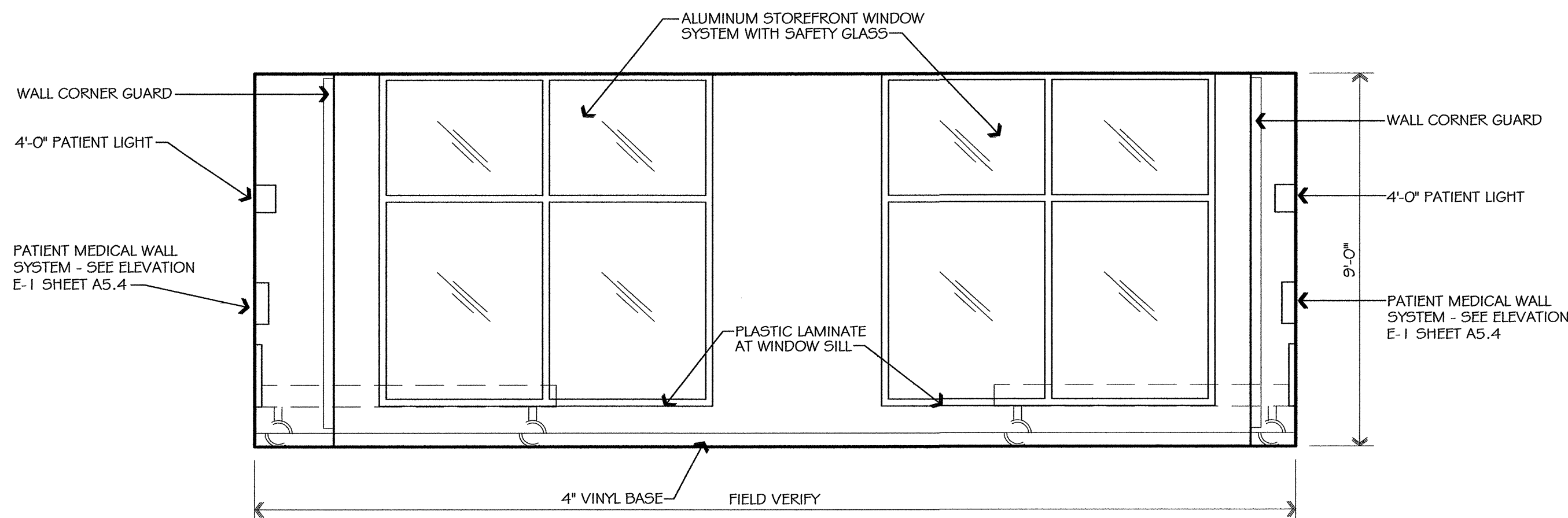


PATIENT LOCKER DETAIL	AA
SCALE: 3/8"=1'-0"	A5.2

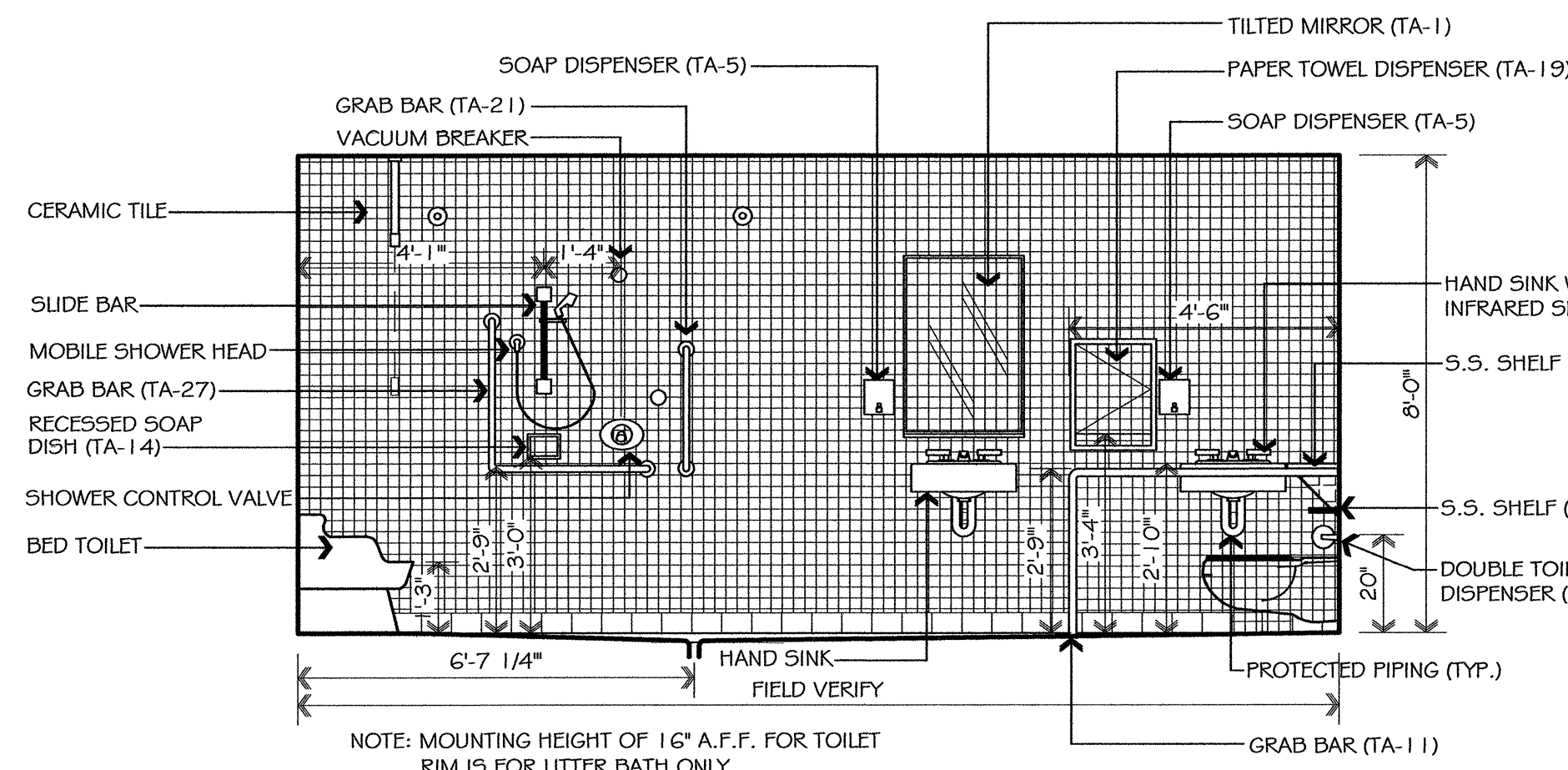
PLAN / SECTION



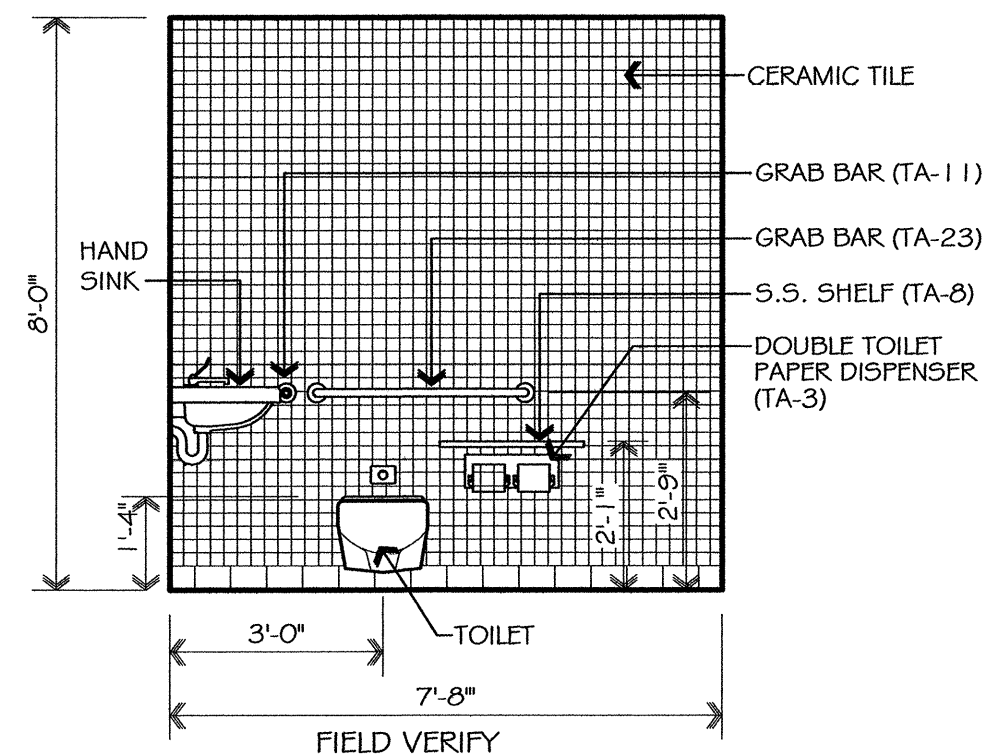
4 BED ROOM ELEVATION	W
SCALE: 3/8"=1'-0"	A5.2



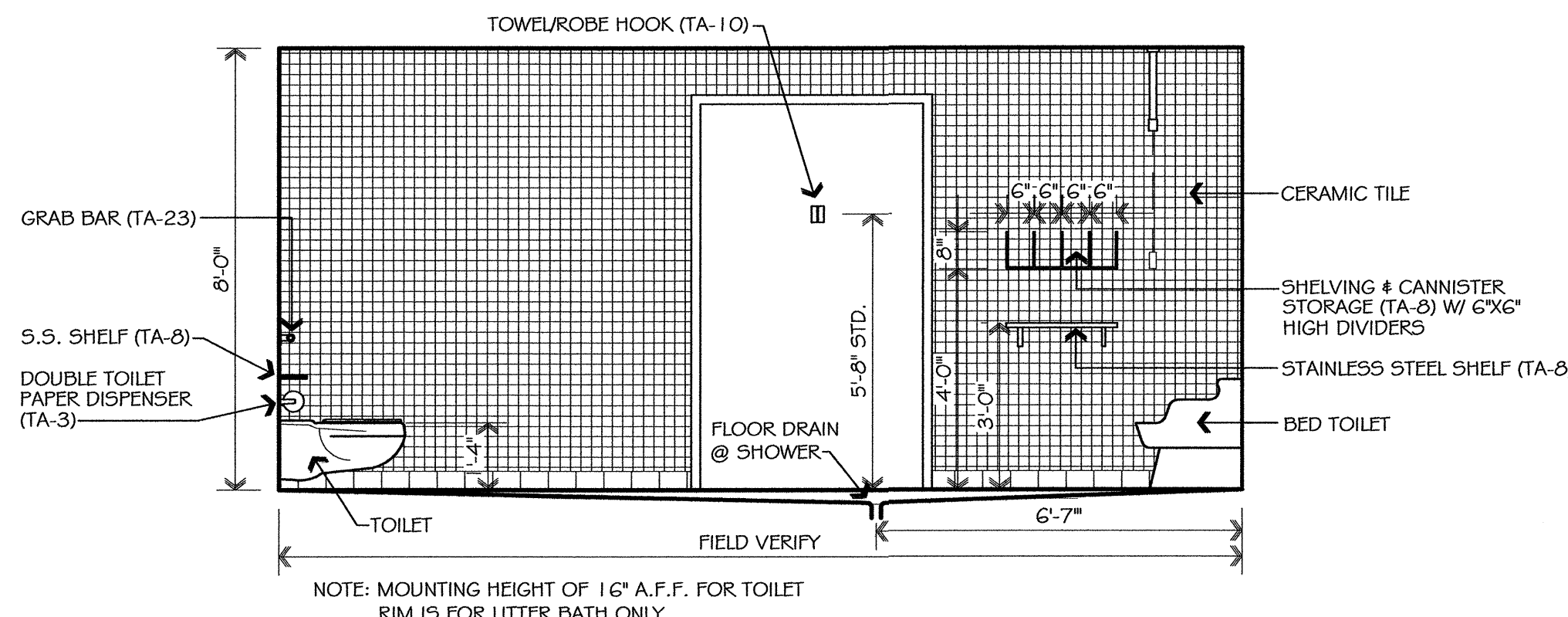
4 BED ROOM ELEVATION	X
SCALE: 3/8"=1'-0"	A5.2



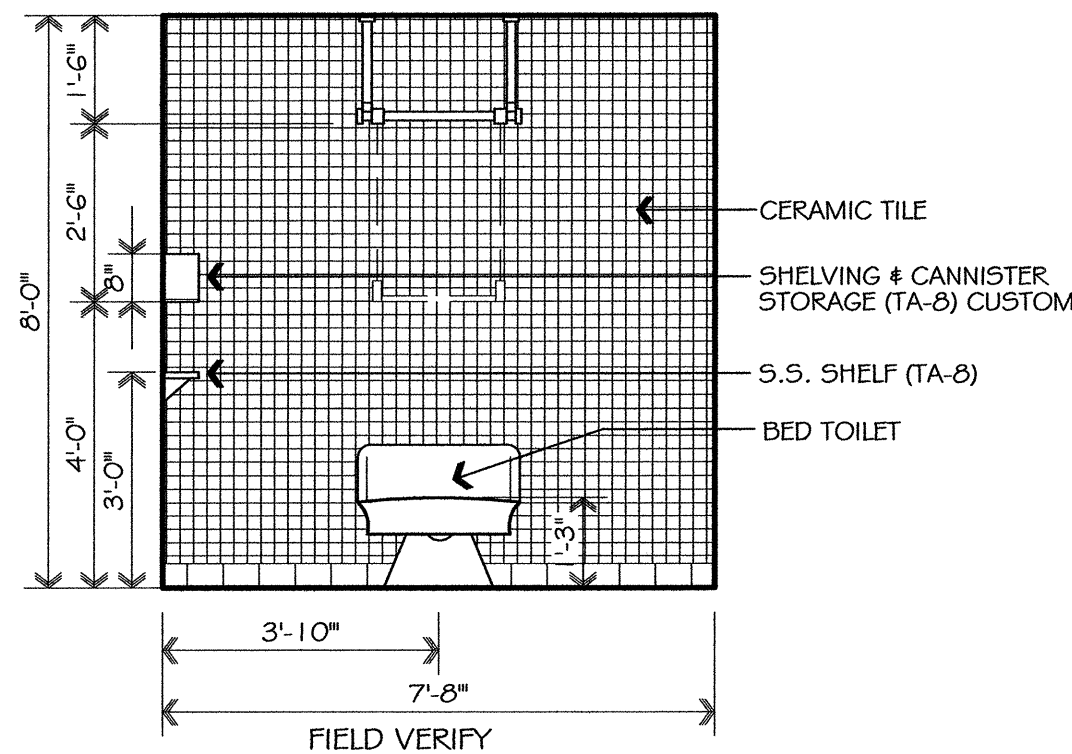
LITTER BATH ELEVATION	S
SCALE: 3/8"=1'-0"	A5.2



LITTER BATH ELEVATION	T
SCALE: 3/8"=1'-0"	A5.2




LITTER BATH ELEVATION	U
SCALE: 3/8"=1'-0"	A5.2



LITTER BATH ELEVATION	V
SCALE: 3/8"=1'-0"	A5.2

REVISIONS:	DATE:	DRAWN BY:
		J. OLIVER
		CHECKED BY:
		R. S. VIRGO



VIRGO GAMBILL
ARCHITECTS

2531 CENTER WEST PARKWAY,
SUITE 200
AUGUSTA, GEORGIA 30909
(706) 736-3661



VIRGO GAMBILL
ARCHITECTS

2531 CENTER WEST PARKWAY,
SUITE 200
AUGUSTA, GEORGIA 30909
(706) 736-3661

MEMBERS OF THE
AMERICAN INSTITUTE
OF ARCHITECTS

THIS DOCUMENT IS PROPERTY OF VIRGO GAMBILL ARCHITECTS. THE UNAUTHORIZED REPRODUCTION, COPYING, OR OTHERWISE USE OF THIS DOCUMENT IS STRICTLY PROHIBITED AND ANY INFRINGEMENT THEREUPON IS SUBJECT TO LEGAL ACTION. 2007 © VIRGO GAMBILL ARCHITECTS

APPROVED BY:	PROJECT TITLE:
MEDICAL CENTER DIRECTOR	RENOVATE "E" WING BUILDING 801, DOWNTOWN DIVISION AUGUSTA, GEORGIA
APPROVED BY:	DRAWING TITLE:
FACILITY MANAGEMENT SERV LINE EXEC	INTERIOR ELEVATIONS / DETAILS

DATE:	VA PROJECT NO.
APRIL 29, 2011	509-318E
DRAWING NO.	DWG. 17 of 44
801-A5.2	



Department of Veterans Affairs
VAMC Augusta, Georgia
Engineering Department (138)