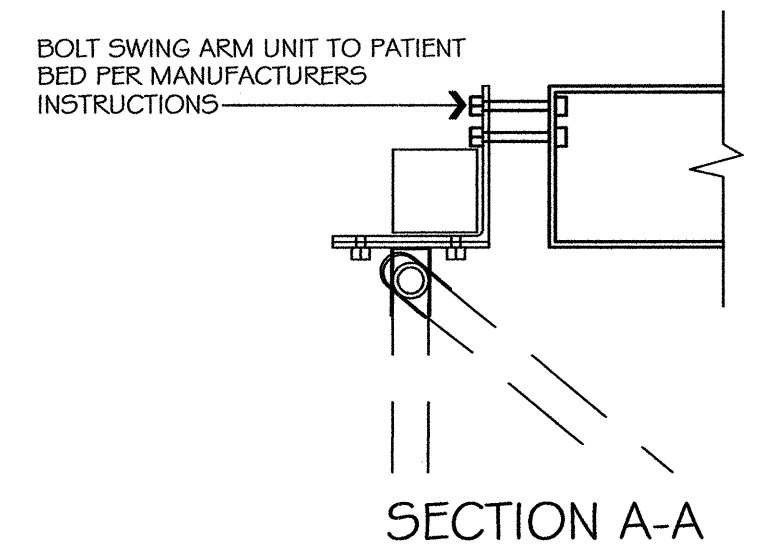


MEDICAL WALL SYSTEM	E-1
SCALE: 1-1/2"=1'-0"	A5.4



LEGEND			
GD	LOCATION FOR GAS DROP IN WALL. COORDINATE EXACT LOCATION W/ VENDORS INSTALLATION DRAWINGS.	PL	4'-0" PATIENT LIGHT WITH INDIRECT, READING, AND EXAM LIGHT W/ 4-32 WATT T8 3500K LAMPS, CONTROLLED POWER SHUT OFF SAFETY FEATURE, 120 VOLT BALLAST. THE INDIRECT LAMP HOUSING SHALL BE HINGED IN THE FRONT AND PIVOTS FOR EXAM LIGHT. LIGHT TO BE FURNISHED W/ HEADWALL SYSTEM. (NORMAL CIRCUIT #1.)
LV,EP,NP	LOW VOLTAGE, EMERGENCY POWER AND NORMAL POWER ROUGH-IN BOXES AND CONDUITS. COORDINATE EXACT LOCATION WITH VENDORS INSTALLATION DRAWINGS.	V	MEDICAL GAS OUTLET VACUUM
LVC	LOW VOLTAGE CONTROLLER	O	MEDICAL GAS OUTLET OXYGEN
GM	GAS MANIFOLD WITH EACH SECTION OF RAIL.	E2	DUPLEX RECEPTACLE - RED
N2	DUPLEX RECEPTACLE - IVORY	SN3	LOW VOLTAGE 3 - FUNCTION SWITCH - RED
TV	TELEVISION PROVISION	A	MEDICAL GAS OUTLET AIR
B	BLANK FACEPLATE - 1 GANG	NL	NIGHT LIGHT - 6 WATTS AND HOOD
SN1	SWITCH SINGLE POLE SINGLE THROW FOR NIGHT LIGHT - IVORY	DA	DATA - PROVISION
NC3	NURSE CALL - PROVISION	BOR	BED ONLY RECEPTACLE - IVORY
NC	LOCKING CALL CORD AND RECEPTACLE	SC	SIDECOM - 37 PIN JACK

REVISIONS:	DATE:	DRAWN BY:
		J. OLIVER
		CHECKED BY:
		R. S. VIRGO

ARCHITECTS PROJECT NO. : 2812

VIRGO GAMBILL
ARCHITECTS
2531 CENTER WEST PARKWAY,
SUITE 200
AUGUSTA, GEORGIA 30909
(706) 736-3661

MEMBERS OF THE
AMERICAN INSTITUTE
OF ARCHITECTS

THIS DOCUMENT IS PROPERTY OF VIRGO GAMBILL ARCHITECTS. THE UNAUTHORIZED REPRODUCTION, COPYING, OR OTHERWISE USE OF THIS DOCUMENT IS STRICTLY PROHIBITED AND ANY INFRINGEMENT THEREUPON IS SUBJECT TO LEGAL ACTION. 2007 © VIRGO GAMBILL ARCHITECTS

APPROVED BY:

MEDICAL CENTER DIRECTOR

APPROVED BY:

FACILITY MANAGEMENT SERV LINE EXEC

PROJECT TITLE:

RENOVATE "E" WING
BUILDING 801, DOWNTOWN DIVISION
AUGUSTA, GEORGIA

DRAWING TITLE:

MEDICAL WALL SYSTEM ELEVATIONS
/ DETAILS

DATE:

APRIL 29, 2011

VA PROJECT NO.

509-318E

DRAWING NO.

801-A5.4

DWG. 19 of 44

Department of Veterans Affairs
VAMC Augusta, Georgia
Engineering Department (138)