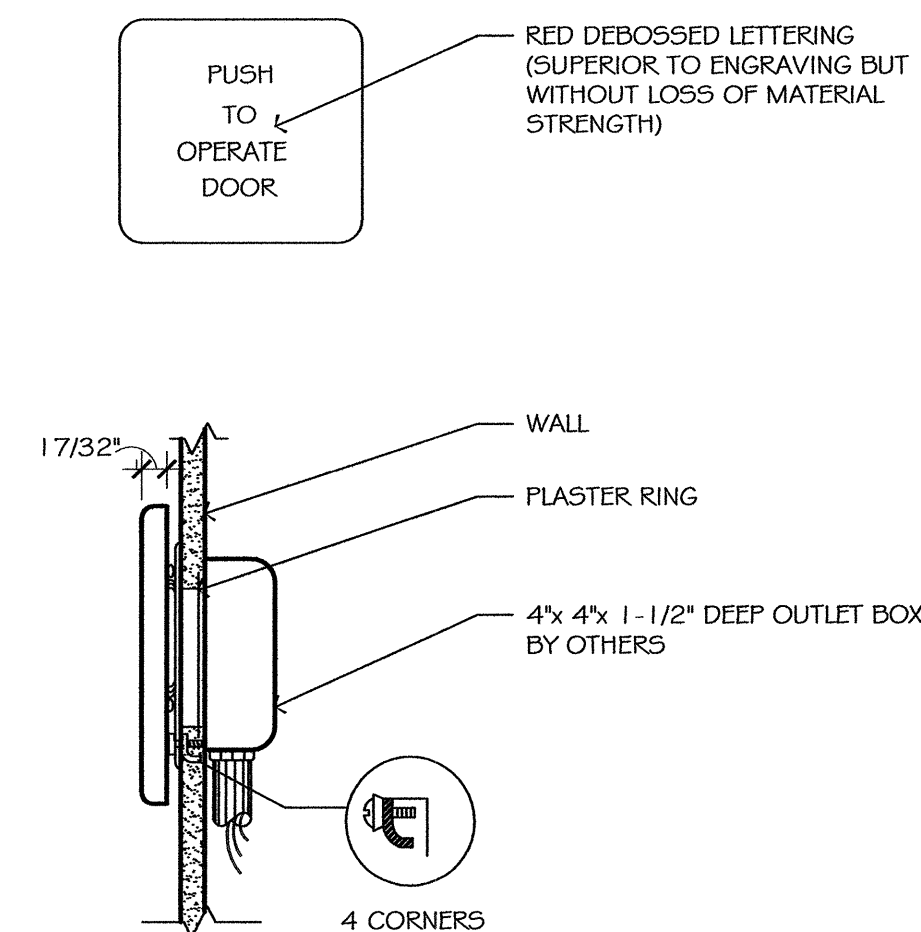
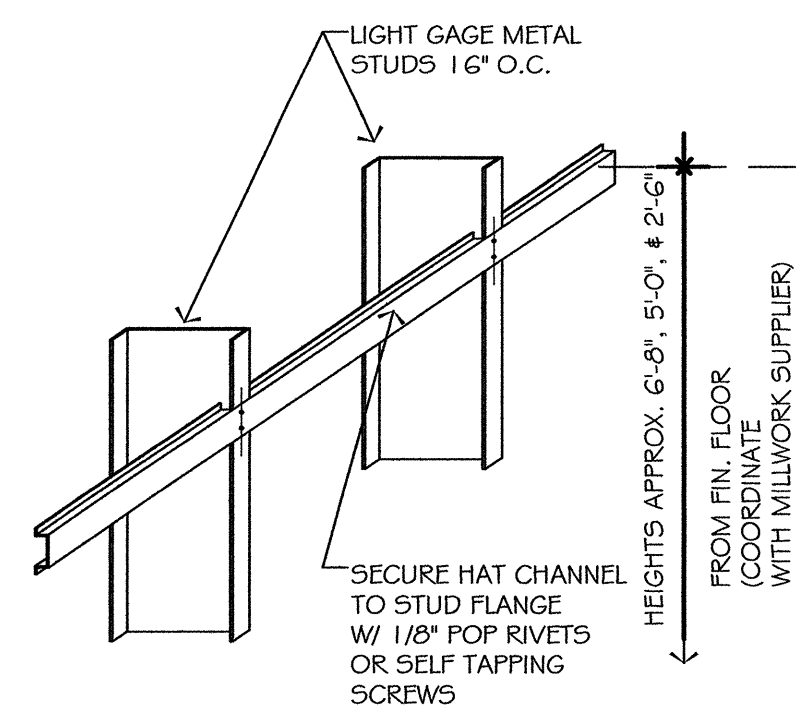


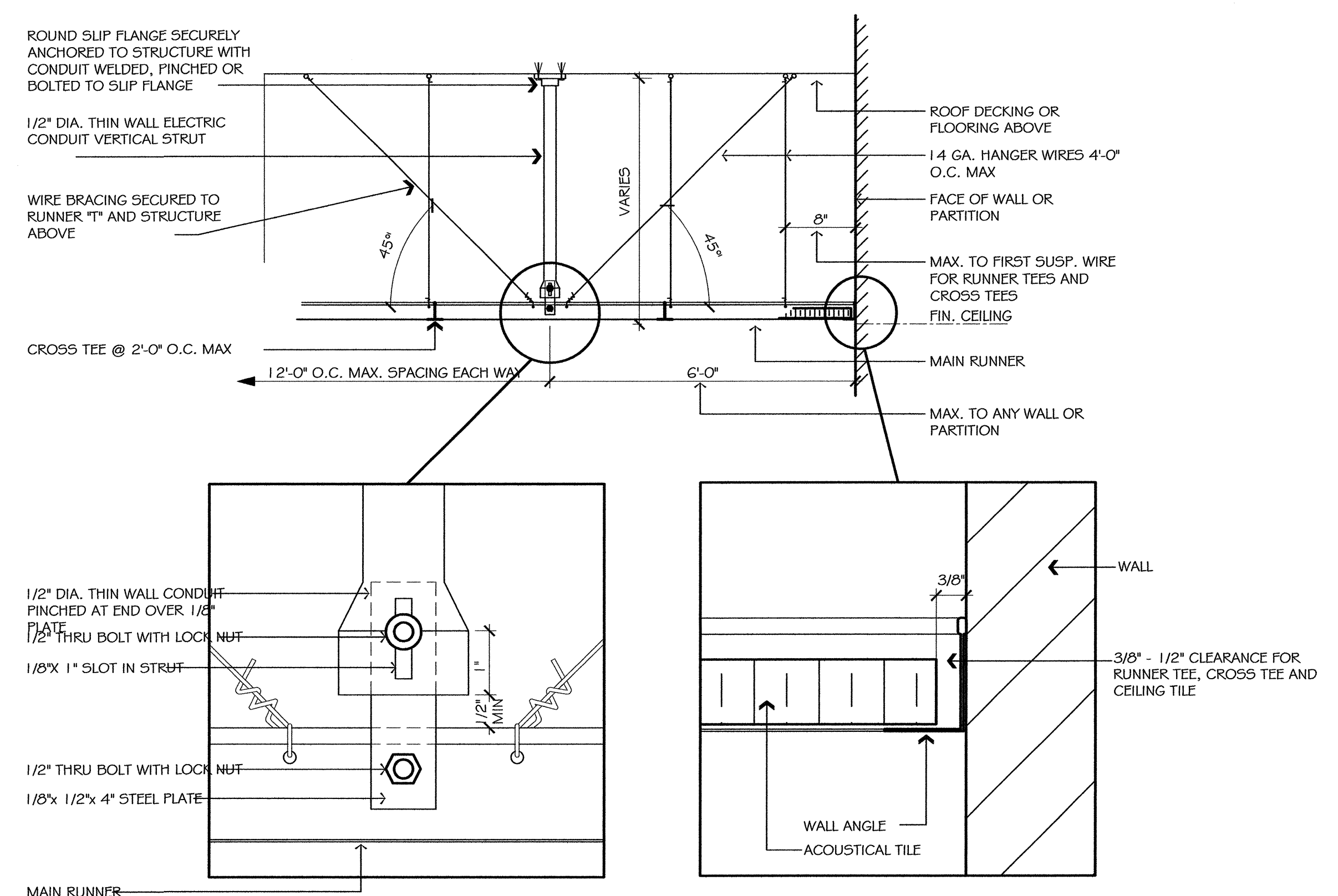
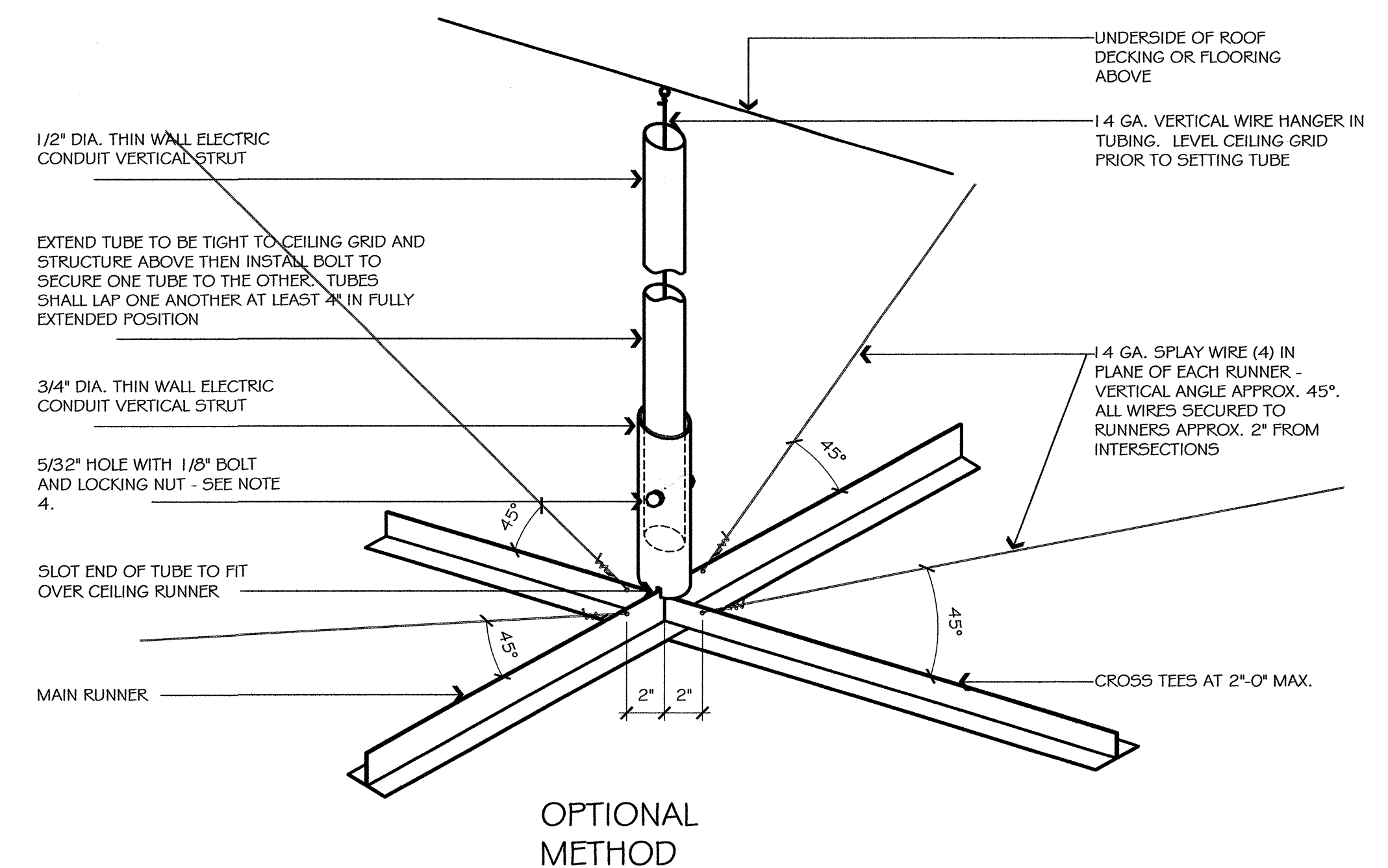
THE PUSH PLATE SWITCH IS A MOMENTARY CONTACT SWITCH USED TO ACTIVATE AUTOMATIC DOORS. IT IS USED IN CONJUNCTION WITH A TIME DELAY FEATURE OR ALTERNATE IMPULSE BY PUSHING ON THE PLATE AT ANY POSITION ON THE PLATE BY EITHER HAND OR ELBOW. ALL CORNERS ARE ROUNDED FOR SAFE OPERATION.



AUTO. DOOR PUSH PLATE	D-4
SCALE: NO SCALE	A-6.2

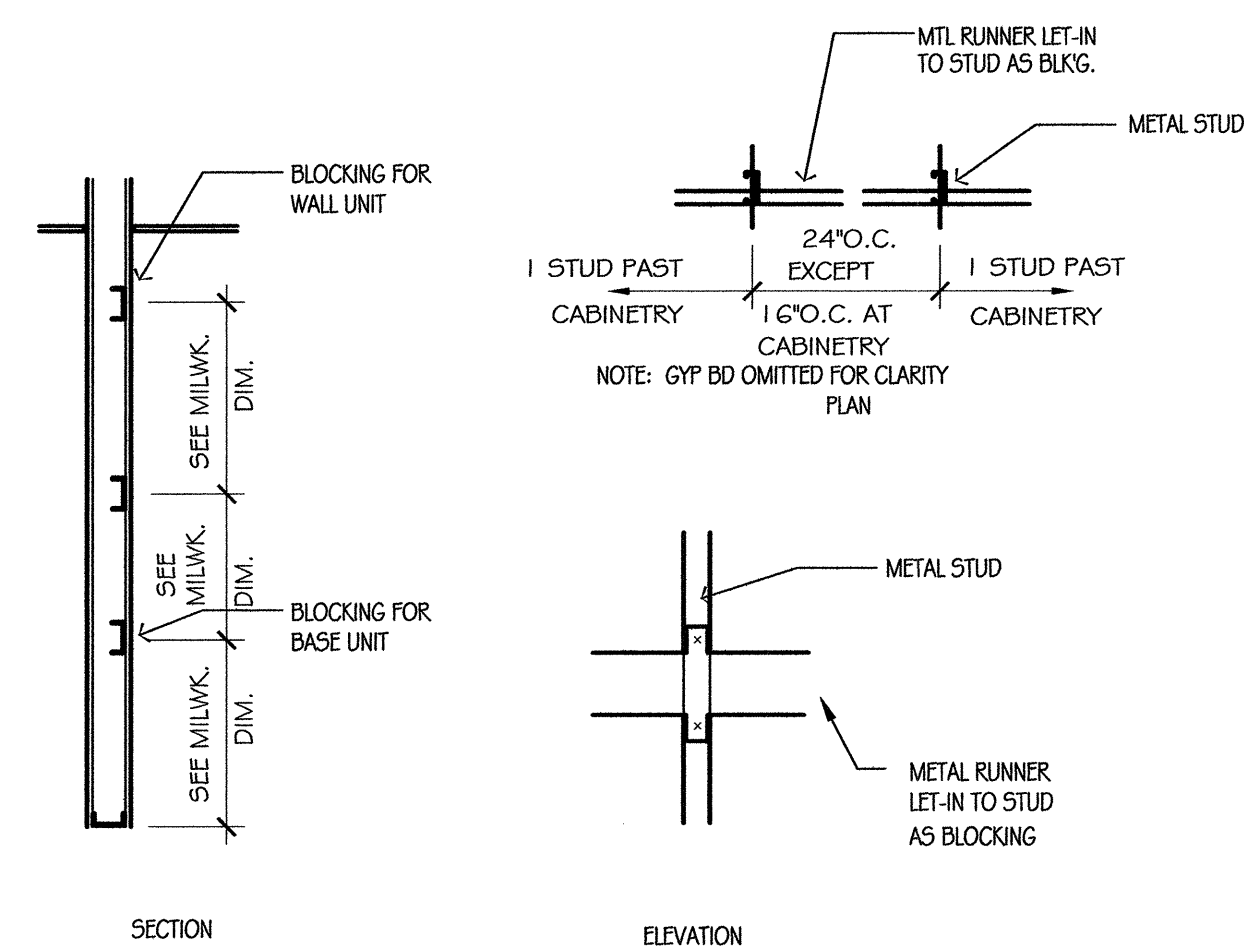


HAT CHANNEL ANCHORAGE	D-5
SCALE: NO SCALE	A-6.2

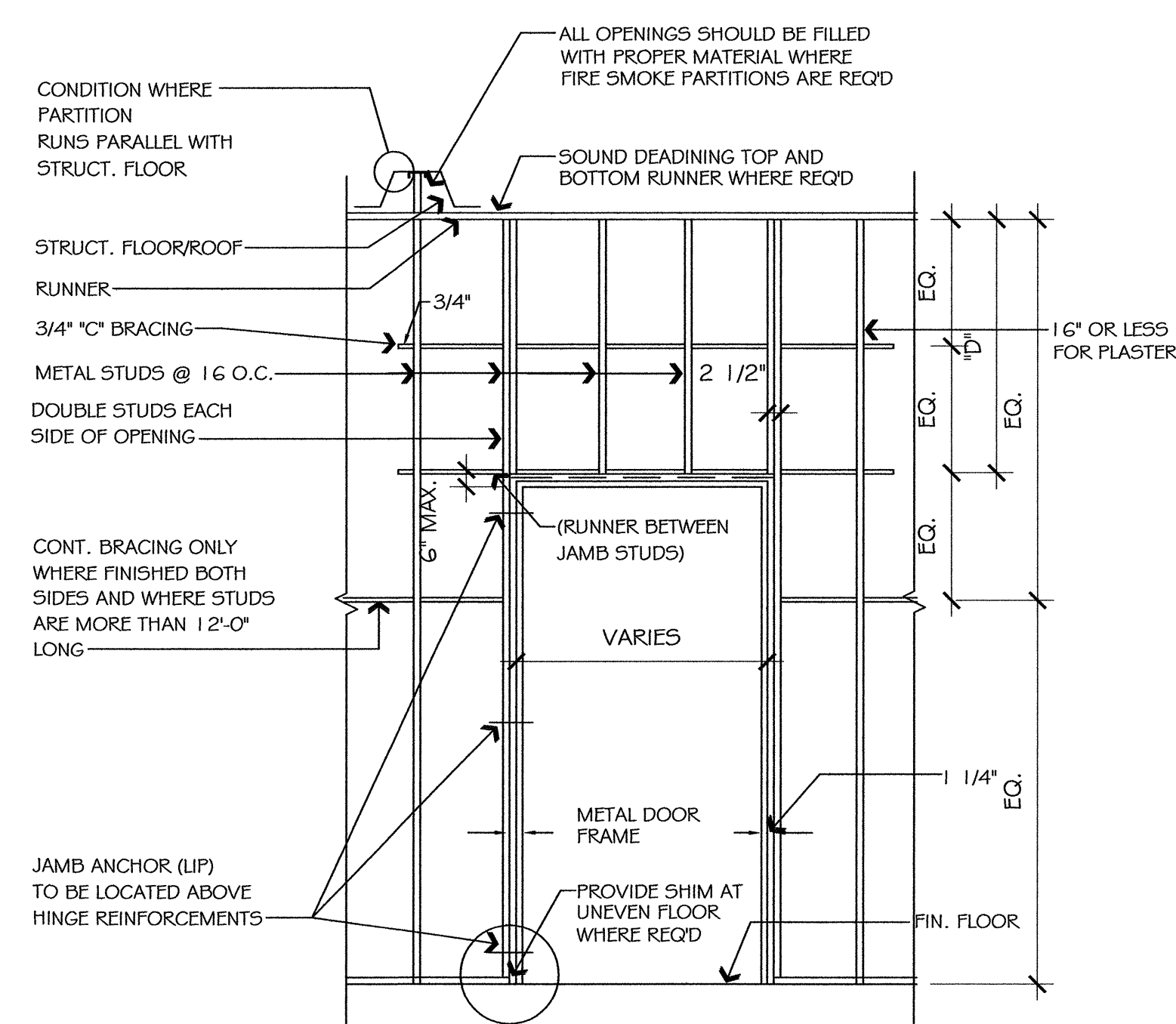


- NOTES:
1. IN SPACES 12 FT. X 12. FT OR LESS IN BOTH DIRECTIONS ONLY ONE VERTICAL STRUT IS REQUIRED.
  2. DO NOT ANCHOR RUNNER "T'S" OR CROSS "T'S" TO WALL ANGLE.
  3. ALL WIRE SHALL BE TAUT WITH THREE COMPLETE TURNS AROUND SELF.
  4. DRILL ONE WALL OF 3/4" CONDUIT PRIOR TO ERECTION TO ACT AS PILOT HOLE FOR THRU-DRILLING WHEN BOTH CONDUITS ARE FIRMLY HELD IN PLACE.

CEILING SEISMIC BRACING DETAIL	D-3
SCALE: NO SCALE	A6.2



CABINET BLOCKING DETAIL	D-1
SCALE: NO SCALE	A6.2



DOOR FRAMING DETAIL	D-2
SCALE: NO SCALE	A6.2

REVISIONS:	DATE:

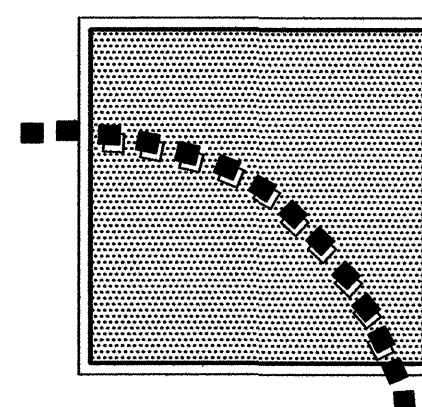
DRAWN BY:

CHECKED BY:

R. S. VIRGO



4.29.2011  
ARCHITECTS PROJECT NO. : 2812



2531 CENTER WEST PARKWAY,  
SUITE 200  
AUGUSTA, GEORGIA 30909  
(706) 736-3661

MEMBERS OF THE  
AMERICAN INSTITUTE  
OF ARCHITECTS

THIS DOCUMENT IS PROPERTY OF VIRGO  
GAMBILL ARCHITECTS. THE UNAUTHORIZED  
REPRODUCTION, COPYING, OR OTHERWISE  
USE OF THIS DOCUMENT IS STRICTLY  
PROHIBITED AND ANY INFRINGEMENT  
THEREUPON IS SUBJECT TO LEGAL ACTION.  
2007 © VIRGO GAMBILL ARCHITECTS

MEDICAL CENTER DIRECTOR

FACILITY MANAGEMENT SERV LINE EXEC

RENOVATE "E" WING  
BUILDING 801, DOWNTOWN DIVISION  
AUGUSTA, GEORGIA

MISCELLANEOUS DETAILS

509-318E

801-A6.2

DWG. 21 of 44



Department of Veterans Affairs  
VAMC Augusta, Georgia  
Engineering Department (138)