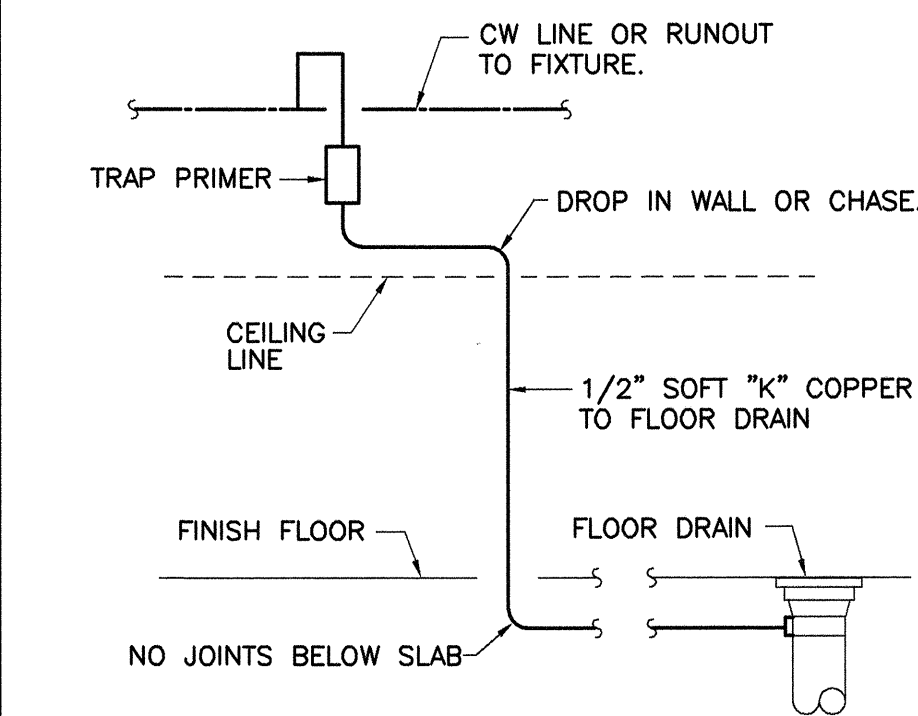
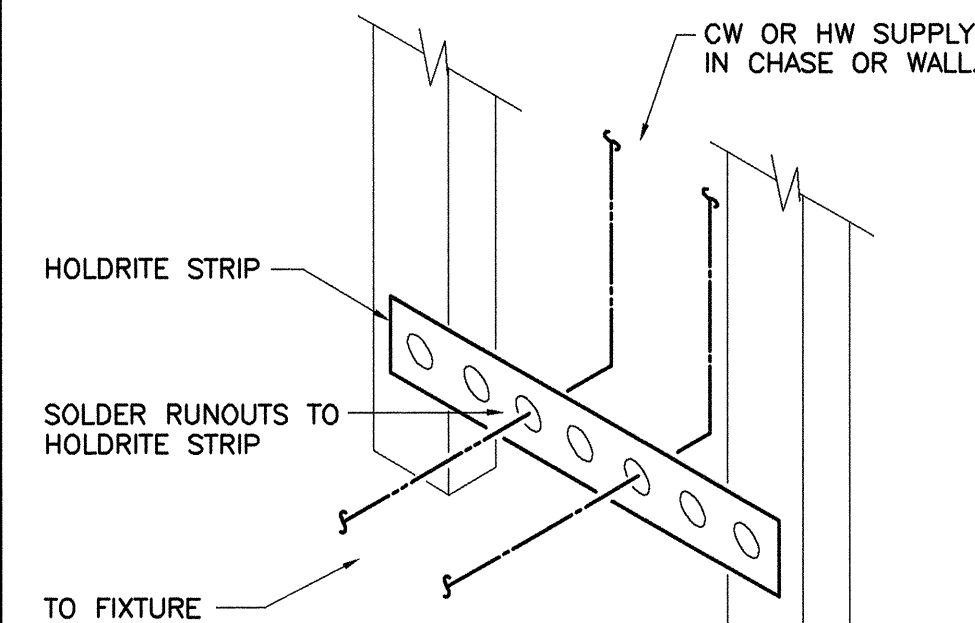


1 **WATER VALVE LOCATOR TAG**
P3.1 NOT TO SCALE

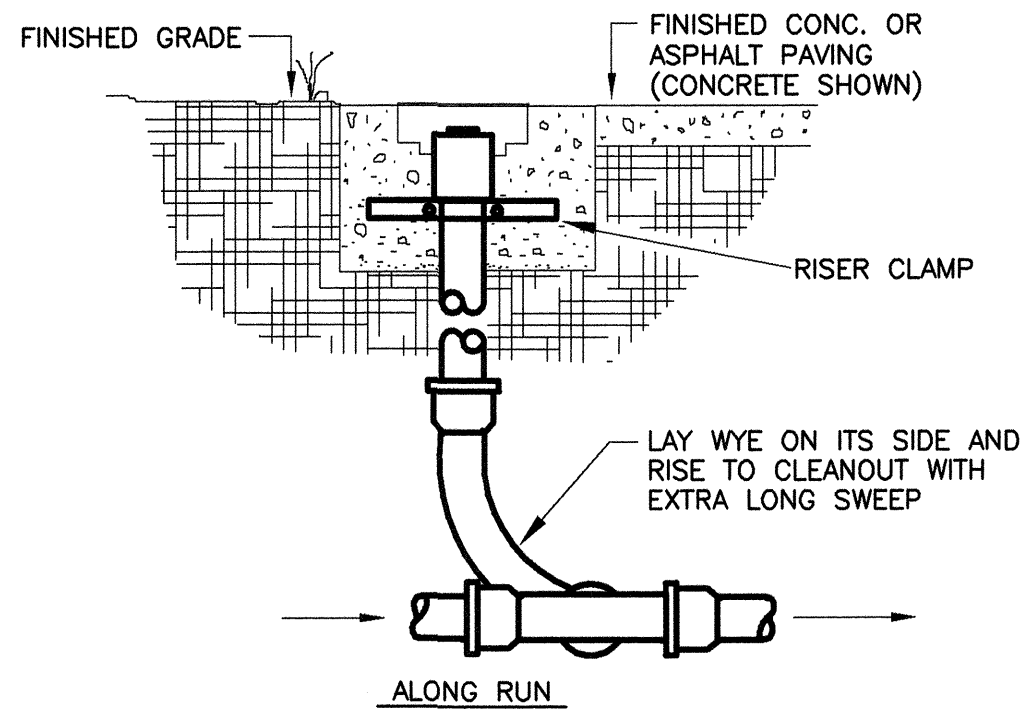
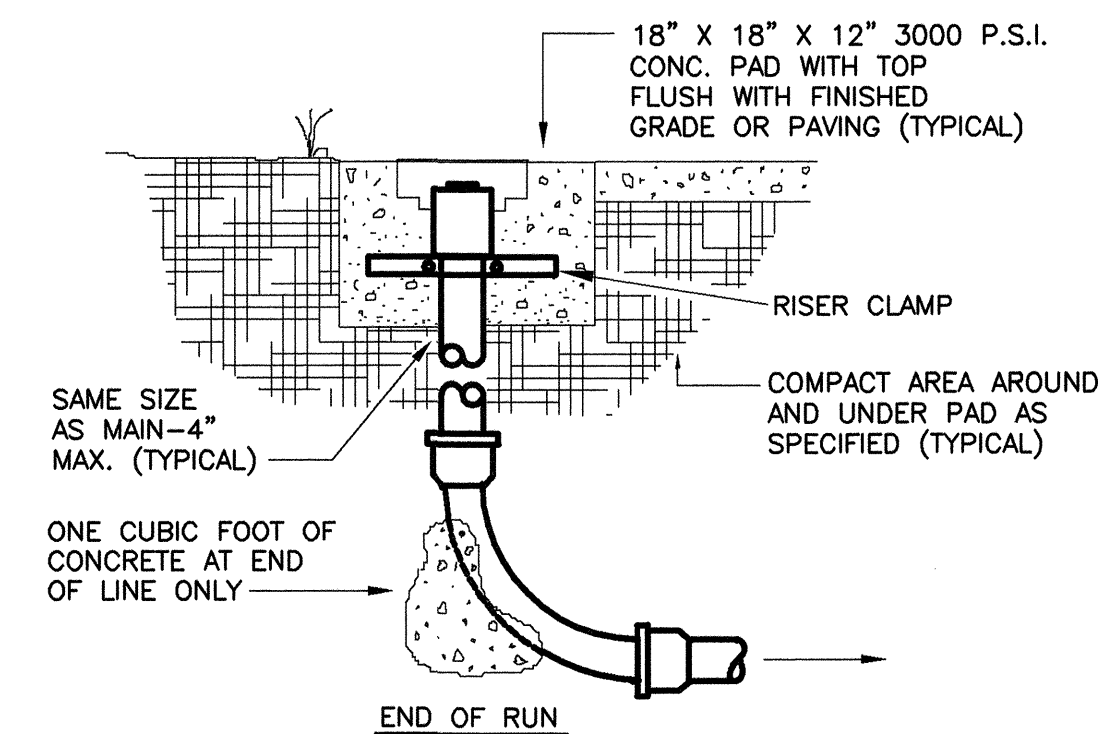


2 **COLD WATER LINE TRAP PRIMER CONNECTION**
P3.1 SCHEMATIC

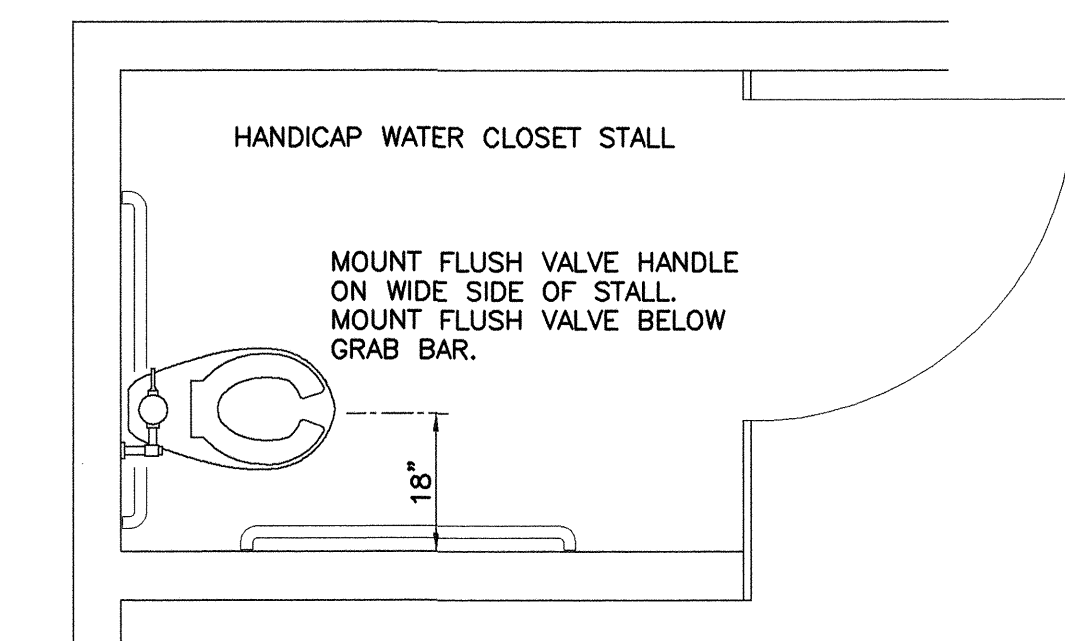


STUD WALL APPLICATIONS

4 **RUNOUT ANCHOR DETAILS**
P3.1 SCHEMATIC



6 **CLEANOUT DETAILS**
P3.1 SCHEMATIC ONLY



5 **CONTROL LOCATIONS AT HANDICAPPED WATER CLOSET**
P3.1 SCHEMATIC

GENERAL PLUMBING NOTES

THE LOCATIONS OF EXISTING UNDERGROUND UTILITIES ARE SHOWN IN AN APPROXIMATE WAY ONLY. THE CONTRACTOR SHALL DETERMINE THE EXACT LOCATION OF ALL EXISTING UTILITIES BEFORE COMMENCING WORK. HE SHALL BE FULLY RESPONSIBLE FOR ANY AND ALL DAMAGES WHICH MIGHT BE OCCASIONED BY HIS FAILURE TO EXACTLY LOCATE AND PRESERVE ANY AND ALL UNDERGROUND UTILITIES.

NOT ALL EXISTING WORK IS SHOWN AND THAT SHOWN IS IN ITS APPROXIMATE LOCATION AND ARRANGEMENT. CONTRACTOR SHALL BE RESPONSIBLE FOR VERIFYING LOCATIONS, ARRANGEMENTS, SIZES AND CONDITIONS AND IN CASE OF DISCREPANCY TO CONTACT THE ARCHITECT FOR RELOCATION AND REMOVAL OF SAID ELEMENTS IN ACCORDANCE WITH THE BASIC INTENTIONS INDICATED BY THE DRAWINGS AND DETAILS.

EXACT LOCATIONS AND ROUGHING REQUIREMENTS FOR ALL FIXTURES AND EQUIPMENT SHALL BE DETERMINED FROM ARCHITECTURAL DRAWINGS, LARGE SCALE ARCHITECTURAL DETAILS AND APPROVED MANUFACTURER'S SHOP DRAWINGS. PARTICULAR ATTENTION SHALL BE DIRECTED TO FIXTURES OR EQUIPMENT FURNISHED UNDER OTHER DIVISIONS.

INVERT ELEVATIONS SHOWN SHALL BE VERIFIED ON THE JOB BEFORE INSTALLING ANY NEW PIPE.

INSTALL TEST-TEES WHEN THE SANITARY SEWER SYSTEM IS TO BE TESTED IN SECTIONS.

PIPING IS SHOWN IN ITS GENERAL LOCATION (UNLESS DIMENSIONED). EXACT LOCATION SHALL BE DETERMINED BY JOB CONDITIONS. CONTRACTOR SHALL COORDINATE THE INSTALLATION OF HIS WORK WITH THAT OF OTHER TRADES AND ARRANGE PIPING TO CLEAR STRUCTURAL MEMBERS AND DUCTWORK.

RISERS FOR FIXTURES, UNLESS OTHERWISE NOTED, SHALL BE CONCEALED IN WALLS OR PIPE CHASES.

REFER TO ARCHITECTURAL FINISH SCHEDULE AND ELEVATIONS FOR DETAILS OF FLOORS WHERE FLOOR DRAINS AND CLEANOUTS ARE LOCATED.

INSTALL EXTERIOR WALL HYDRANTS 18" ABOVE FINISH GRADE, EXCEPT AS NOTED OTHERWISE.

CONNECTION OF MEDICAL EQUIPMENT SHALL BE BY THIS CONTRACTOR UNDER THE SUPERVISION OF EQUIPMENT MANUFACTURER'S REPRESENTATIVE.

PROVIDE SLEEVES FOR PIPES PASSING THRU FLOORS, MASONRY WALLS AND FIRE OR SMOKE PARTITIONS. PACK ANNULAR SPACE BETWEEN PIPE WITH MATERIAL APPROVED IN U.L. BUILDING DIRECTORY.

PLUMBING LEGEND

SYMBOL	DESCRIPTION	SYMBOL	DESCRIPTION
SD	STORM DRAIN	ESS	EXIST. SOIL, WASTE, OR SANITARY SEWER
VENT	VENT	CW	COLD WATER
ECW	EXISTING COLD WATER	HW	HOT WATER
EHW	EXISTING HOT WATER	HW CIRC	HOT WATER CIRCULATING
EHWC	EXISTING HOT WATER CIRCULATING	MA	MEDICAL AIR
MA	MEDICAL AIR	EMA	EXISTING MEDICAL AIR
VAC	VACUUM	EVAC	EXISTING VACUUM
O2	OXYGEN	EO2	EXISTING OXYGEN
ERDL	EXISTING ROOF DRAIN LINE -ABV GRADE	ERDL	EXISTING ROOF DRAIN LINE - BELOW GRADE
VTR	VENT THRU ROOF	BAV	BALL VALVE
RD	ROOF DRAIN	CV	CHECK VALVE
HB	HOSE BIBB	CN	CLEANOUT
N/B	NEW WORK CONNECTION TO EXISTING	FD	FLOOR DRAIN
ERD	EXISTING ROOF DRAIN	PDI'X'	WATER HAMMER ARRESTOR
PRV	PRESSURE REDUCING VALVE	WH	WALL HYDRANT
BV	BALANCING VALVE	STR	STRAINER
WCO	WALL CLEANOUT	DEM	DEMOLITION
		BAV	BALL VALVE

PLUMBING FIXTURE SCHEDULE

SYMBOL	FIXTURE	WASTE CONN. BRANCH	VENT	COLD WATER	HOT WATER	RIM HGT. 1	FIXTURES LISTED BELOW ARE FOR BASIS OF DESIGN, EQUALS ACCEPTED
P-103	WATER CLOSET (WALL HUNG A.D.A. ADULT)	4"	2"	1/4"	-	1	CRANE 4416, SLOAN 111-1.28 FL.VLV. CENTOCO 1500STSCC 3
P-402	LAVATORY (WALL HUNG) (A.D.A. ADULT)	1-1/4"	1-1/2"	1/2"	1/2"	APRON BOTTOM 29"	CRANE 14121H, ZURN 6919-ADM-J FAUCET, Z-8743 DRAIN, 3 2
P-404	LAVATORY	1-1/4"	1-1/2"	1/2"	1/2"	DECK	LAV IS WITH INTEGRAL COUNTERTOP ZURN Z-812A4-XL-18F, Z-8743 DRAIN 2
P-502	SERVICE SINK	1-1/2"	1-1/2"	1/2"	1/2"	FAUCET 36" A.F.	FIAT TSBC-1610, 832-AA, 889-CC, ZURN Z-841M2-RC FAUCET
P-505	CLINIC SERVICE SINK	1-1/2"	1-1/2"	1/4"	1/2"	1	KOHLER K-12867 SINK, ZURN Z-85500-WM-EVB-HK-SE-SH WASHER SLOAN 116 FL. VLV. 3
P-528	SINGLE SINK (A.D.A.)	1-1/2"	1-1/2"	1/2"	1/2"	DECK	JUST SL-ADA-1921-A-GR SINK ZURN Z-871S4-18M FAUCET ZURN Z-8741 DRAIN
P-701	SHOWER (ADA)	-	-	1/2"	1/2"	-	1 SYMMONS BP-56-300-B30-X-LR-1.5
TP-1	TRAP PRIMER	-	-	-	-	-	PRESICION PLBG PROD P1
FD-1	FLOOR DRAIN (GENERAL)	-	-	-	-	-	SEE SPECIFICATIONS (TYPE C)
CO-1	CLEANOUT	-	-	-	-	-	SEE SPECIFICATIONS

PLUMBING FIXTURE SCHEDULE KEYNOTES

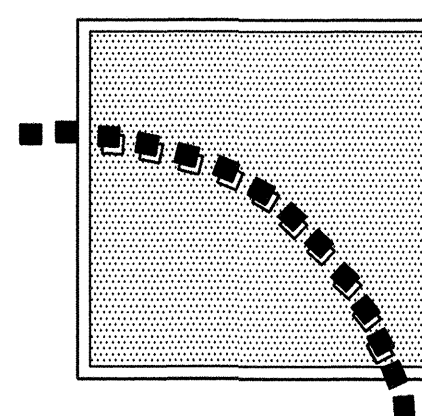
- 1 RIM HEIGHT FOR GUIDANCE ONLY. SEE ARCHITECTS DRAWINGS FOR EXACT MOUNTING HEIGHT. ROUGH WATER AND SANITARY CONNECTION AS REQUIRED. RIM HEIGHT INCLUDES SPECIFIED SEAT ON WATER CLOSETS.
- 2 PROVIDE "TRUEBRO LAV GUARD" PROTECTIVE PIPE COVERS ON WASTE AND SUPPLY PIPING.
- 3 PROVIDE HEAVY DUTY CHAIR CARRIER



REVISIONS:	DATE:	DRAWN BY:
		RWW
		CHECKED BY:
		JMF



ARCHITECTS PROJECT NO. : 2812



VIRGO GAMBILL
ARCHITECTS
2531 CENTER WEST PARKWAY,
SUITE 200
AUGUSTA, GEORGIA 30909
(706) 736-3661

MEMBERS OF THE
AMERICAN INSTITUTE
OF ARCHITECTS

THIS DOCUMENT IS PROPERTY OF VIRGO
GAMBILL ARCHITECTS. THE UNAUTHORIZED
REPRODUCTION, COPYING, OR OTHERWISE
USE OF THIS DOCUMENT IS STRICTLY
PROHIBITED AND ANY INFRINGEMENT
THEREUPON IS SUBJECT TO LEGAL ACTION.
2007 © VIRGO GAMBILL ARCHITECTS

APPROVED BY:

MEDICAL CENTER DIRECTOR

APPROVED BY:

FACILITY MANAGEMENT SERV LINE EXEC

PROJECT TITLE:

RENOVATE "E" WING
BUILDING 801, DOWNTOWN DIVISION
AUGUSTA, GEORGIA

DRAWING TITLE:

PLUMBING SCHEDULE AND DETAILS

DATE:

APRIL 29, 2011

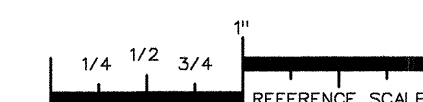
VA PROJECT NO.

509-318E

DRAWING NO.

801-P3.1

DWG. 31 of 44



PLOT DATE: 04/27/11
FILENAME: 08101M1
BASESHT: 08101BDR,BSB,KY1,L1
PLOT SCALE: 1 = 96
RWW



Department of Veterans Affairs
VAMC Augusta, Georgia
Engineering Department (138)