

NOTES:

- 1 ALL PANEL BOARDS, TRANSFORMERS, RECEPTACLES, LIGHT SWITCHES, LIGHT FIXTURES, FIRE ALARM DEVICES, VOICEDATA OUTLETS AND PAGING DEVICES WITHIN THE OUTLINED SPACE SHALL BE REMOVED UNLESS INDICATED TO REMAIN OR BE RELOCATED. OUTLET BOXES, JUNCTION BOXES, CONDUIT, CABLING AND CONDUCTORS SERVING THESE DEVICES SHALL BE REMOVED BACK TO PANEL BOARD, CONTROL POINT THE DEVICES IS SERVED FROM, PATCH PANEL OR PUNCH DOWN BLOCK. WHERE OUTLET BOXES ARE REMOVED IN WALLS THAT ARE INDICATED TO REMAIN, PATCH WALLS AND PAINT TO MATCH. ALL NURSE CALL DEVICES SHALL BE TURNED OVER TO NURSE CALL VENDOR, BRANDON LOGGINS(803.315.9420)
- 2 RELOCATE CABLE TV AMP AND SPLITTERS IN THIS ROOM. COORDINATE RELOCATION WITH THE VA, (LAMONT HENLEY 706.733.0188, EXT 3380)
- 3 NO DEMOLITION IN THIS ROOM
- 4 REMOVE CAMERA AND REINSTALL IN SAME LOCATION AFTER NEW CEILING IS INSTALLED
- 5 INTERCEPT 20-20/1 CIRCUITS PRESENTLY BEING SERVED FROM PANEL 1NLE1 IN ROOM 1A-123 AND EXTEND TO NEW PANEL 1NLE, REFER TO 801-E2.0 FOR LOCATION.  
INTERCEPT 11-20/1 CIRCUITS PRESENTLY BEING SERVED FROM PANEL 1NLE2 IN ROOM 1A-123 AND EXTEND TO NEW PANEL 1NLE, REFER TO 801-E2.0 FOR LOCATION.  
INTERCEPT 4-20/2 CIRCUITS PRESENTLY BEING SERVED FROM PANEL 1NLE IN ROOM 1A-123 AND EXTEND TO NEW PANEL 1NLE, REFER TO 801-E2.0 FOR LOCATION.  
INTERCEPT 3-20/1 CIRCUITS PRESENTLY BEING SERVED FROM PANEL 1NLE IN ROOM 1A-123 AND EXTEND TO EXISTING PANEL 1NLE IN ROOM 1E-121, REFER TO 801-E2.0 FOR LOCATION.  
INTERCEPT 1-20/1 CIRCUITS PRESENTLY BEING SERVED FROM PANEL 1NLE IN ROOM 1A-123 AND EXTEND TO EXISTING PANEL 1NLE IN ROOM 1E-121, REFER TO 801-E2.0 FOR LOCATION.  
INTERCEPT 4-20/1 CIRCUITS PRESENTLY BEING SERVED FROM PANEL 1ELE IN ROOM 1A-123 AND EXTEND TO EXISTING PANEL 1EQPGA IN ROOM 1E-121, REFER TO 801-E2.0 FOR LOCATION.  
ALL OF THESE BRANCH CIRCUITS ARE LOCATED ABOVE THE CEILING AT THIS LOCATION. REVISE ALL PANEL BOARD DIRECTORIES

- 6 RELOCATE 100 PAIR TELEPHONE CABLE, LABELED 1E116, TO ROOM 1A-124 AND TERMINATE TO NEW 110 BLOCKS. REMOVE TELEPHONE CABLES THAT COMES OUT OF FLOOR BACK TO ITS SOURCE, CUT CONDUITS OFF BELOW THE FLOOR AND FILLED WITH CONCRETE. RELOCATE STATION TELEPHONE CABLES THAT ARE SERVED FROM THIS ROOM THAT ARE NOT IN THIS SCOPE OF WORK TO NEW 110 BLOCKS IN ROOM 1A-124. COORDINATE RELOCATION OF THESE CABLE WITH THE VA, (RICHARD JEFFERIES 706.729.5899)
- 7 REMOVE FIBER, BACK TO ROOM 1G131, FIBER JUNCTION BOX, DATA RACK, SWITCHES AND PATCH PANEL IN THIS ROOM. DO NOT REMOVE UNTIL NEW FIBER AND RACK IS INSTALLED IN ROOM 1A-124. RELOCATE DATA CABLES THAT ARE SERVED FROM THIS ROOM THAT ARE NOT IN THIS SCOPE OF WORK TO NEW RACK MOUNTED PATCH PANEL ROOM 1A-124. TURN OVER ALL EQUIPMENT IN THIS ROOM TO OWNER. COORDINATE RELOCATION OF THESE CABLE WITH THE VA, (RICHARD JEFFERIES 706.729.5899), EXISTING UNUSED FIBER IN THIS ROOM SHALL BE RELOCATED TO NEW FIBER JUNCTION BOX, SEE 801-E5.0 FOR LOCATION
- 8 RELOCATE 100 PAIR TELEPHONE CABLE, LABELED 1A124 IN THIS ROOM AND TERMINATE TO NEW 110 BLOCKS. REMOVE TELEPHONE CABLES THAT COMES OUT OF FLOOR BACK TO ITS SOURCE, CUT CONDUITS OFF BELOW THE FLOOR AND FILLED WITH CONCRETE. RELOCATE STATION TELEPHONE CABLES THAT ARE SERVED FROM THIS ROOM THAT ARE NOT IN THIS SCOPE OF WORK TO NEW 110 BLOCKS IN THIS ROOM. COORDINATE RELOCATION OF THESE CABLE WITH THE VA, (RICHARD JEFFERIES 706.729.5899), EXISTING UNUSED FIBER IN THIS ROOM SHALL BE RELOCATED TO NEW FIBER JUNCTION BOX, SEE 801-E5.0 FOR LOCATION
- 9 SEE 801-E7.0 FOR DEMOLITION INFORMATION FOR THIS ROOM
- 10 RELOCATE SPEAKER, SEE 801-E3.0 FOR NEW LOCATION
- 11 RELOCATE WIRELESS ACCESS MODEM, SEE 801-E3.0 FOR NEW LOCATION
- 12 RELOCATE FIRE ALARM DEVICE, SEE 801-E4.0 FOR NEW LOCATION
- 13 RELOCATE NURSE CALL LIGHTING FIXTURE RELAY INTERFACE TO NEW PATIENT HEAD WALL UNITS, COORDINATE WITH NURSE CALL VENDOR

LEGEND

LIGHTING AND POWER

CONDUIT RUN CONCEALED ABOVE CEILING OR IN WALL. HASH MARKS, IF SHOWN, INDICATE QUANTITY OF NUMBER CONDUCTORS. GROUND NOT INDICATED BUT REQUIRED PER SPECIFICATIONS

HOMERUN TO PANELBOARD, LETTER OR LETTERS INDICATE PANELBOARDS, NUMBERS INDICATE CIRCUIT NUMBERS.

FLUORESCENT FIXTURE, RECESSED TYPE

DOWNLIGHT

LIGHTING FIXTURE, WALL BRACKET MOUNTED

EXIT LIGHT, WALL OR CEILING

JUNCTION BOX

JUNCTION BOX FLUSH IN WALL

DUPLEX RECEPTACLE, 18" AFF

GFCI DUPLEX RECEPTACLE, 8" ABOVE COUNTER TOP OR 46" AFF

EMERGENCY QUADRUPLUX RECEPTACLE, 18" AFF

EMERGENCY DUPLEX RECEPTACLE, 18" AFF

EMERGENCY GFCI DUPLEX RECEPTACLE, 8" ABOVE COUNTER TOP OR 42" AFF

EMERGENCY GFCI DUPLEX RECEPTACLE, 18" AFF

SINGLE POLE TOGGLE SWITCH OR MOTION SENSOR, 42" AFF

FIRE ALARM SYSTEM

SPEAKER/STROBE, 80" AFF, CANDELA INDICATED ON DRAWING

STROBE, 80" AFF, CANDELA INDICATED ON DRAWING

SMOKE DETECTOR

DOOR HOLDER

NURSE CALL SYSTEM

PATIENT STATION, MOUNT IN HEAD WALL UNIT

DUTY STATION, 42" AFF

EMERGENCY PULL, 42" AFF

DOME LIGHT

TV SYSTEM

TV OUTLET, MOUNT IN HEAD WALL UNIT WITH F CONNECTOR

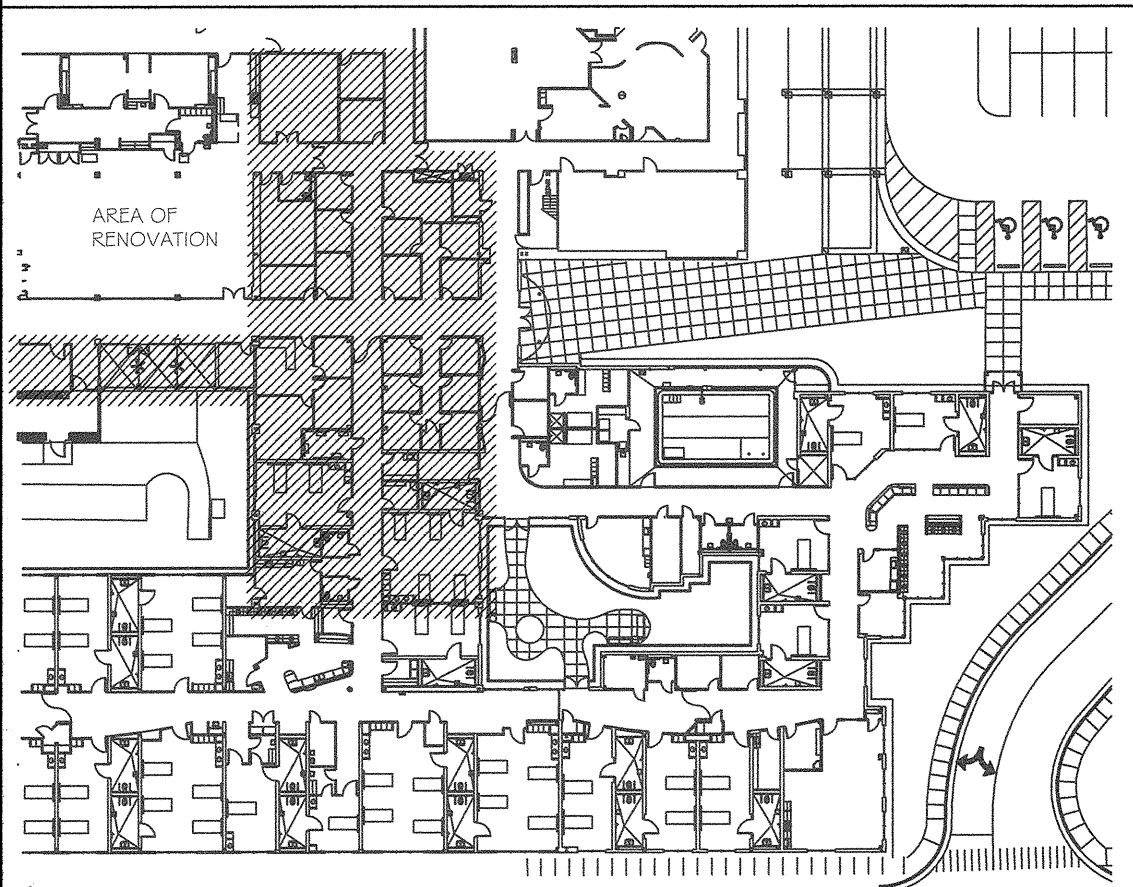
TV COUPLER, MOUNT ABOVE CEILING

VOICE/DATA SYSTEM

VOICE/DATA OUTLET, 18" AFF OR AS INDICATED ON DRAWINGS

KEY PLAN

-NOT TO SCALE-



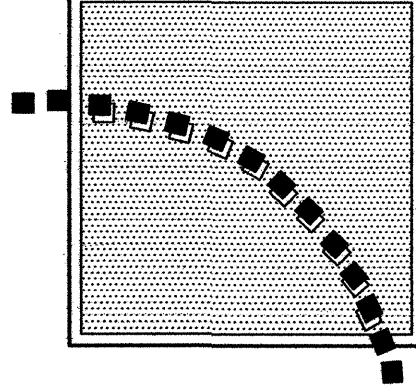
1 DEMOLITION PLAN  
801-E0.1 SCALE: 1/8"=1'-0"



ELECTRICAL DESIGN ELECTRICAL ENGINEERS  
1201 BROAD ST., SUITE 1-A  
AUGUSTA, GA 30901  
PH: (706) 724-3551  
FAX: (706) 724-8507  
CONSULTANTS INC EDC PROJECT # 11033

REVISIONS:	DATE:

DRAWN BY:	S. THOMAS
CHECKED BY:	M. MONGRUE



VIRGO GAMBILL  
ARCHITECTS  
2531 CENTER WEST PARKWAY,  
SUITE 200  
AUGUSTA, GEORGIA 30909  
(706) 736-3661

MEMBERS OF THE  
AMERICAN INSTITUTE  
OF ARCHITECTS  
THIS DOCUMENT IS PROPERTY OF VIRGO  
GAMBILL ARCHITECTS. THE UNAUTHORIZED  
REPRODUCTION, COPYING, OR OTHERWISE  
USE OF THIS DOCUMENT IS STRICTLY  
PROHIBITED AND ANY INFRINGEMENT  
THEREUPON IS SUBJECT TO LEGAL ACTION.  
2007 © VIRGO GAMBILL ARCHITECTS

APPROVED BY:	PROJECT TITLE:
MEDICAL CENTER DIRECTOR	RENOVATE "E" WING BUILDING 801, DOWNTOWN DIVISION AUGUSTA, GEORGIA
APPROVED BY:	DRAWING TITLE:
FACILITY MANAGEMENT SERV LINE EXEC	DEMOLITION PLAN

DATE:	APRIL 29, 2011
VA PROJECT NO.	509-318E
DRAWING NO.	801-E1.0
DWG.	38 of 44

Department of Veterans Affairs  
VAMC Augusta, Georgia  
Engineering Department (138)