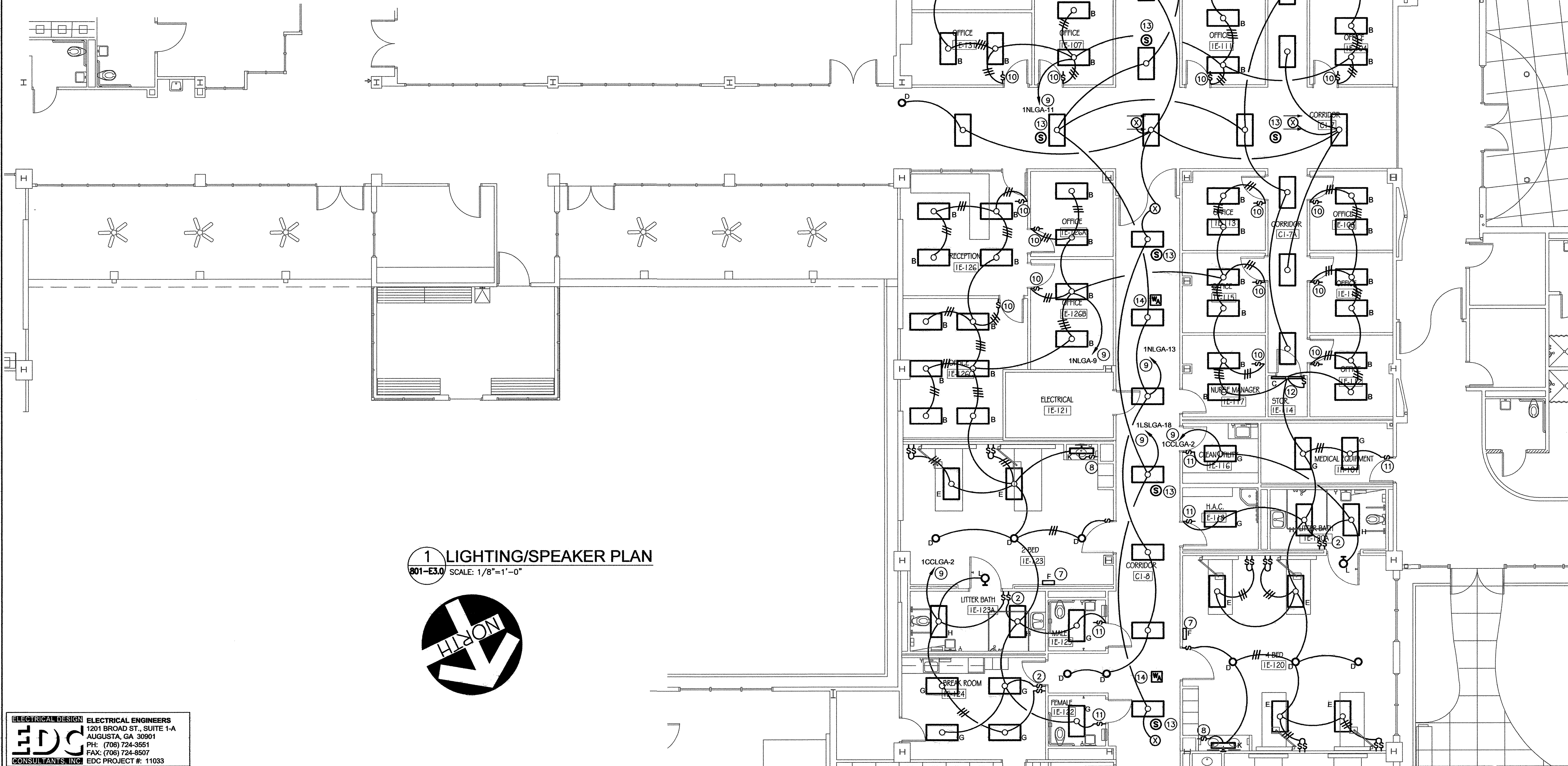


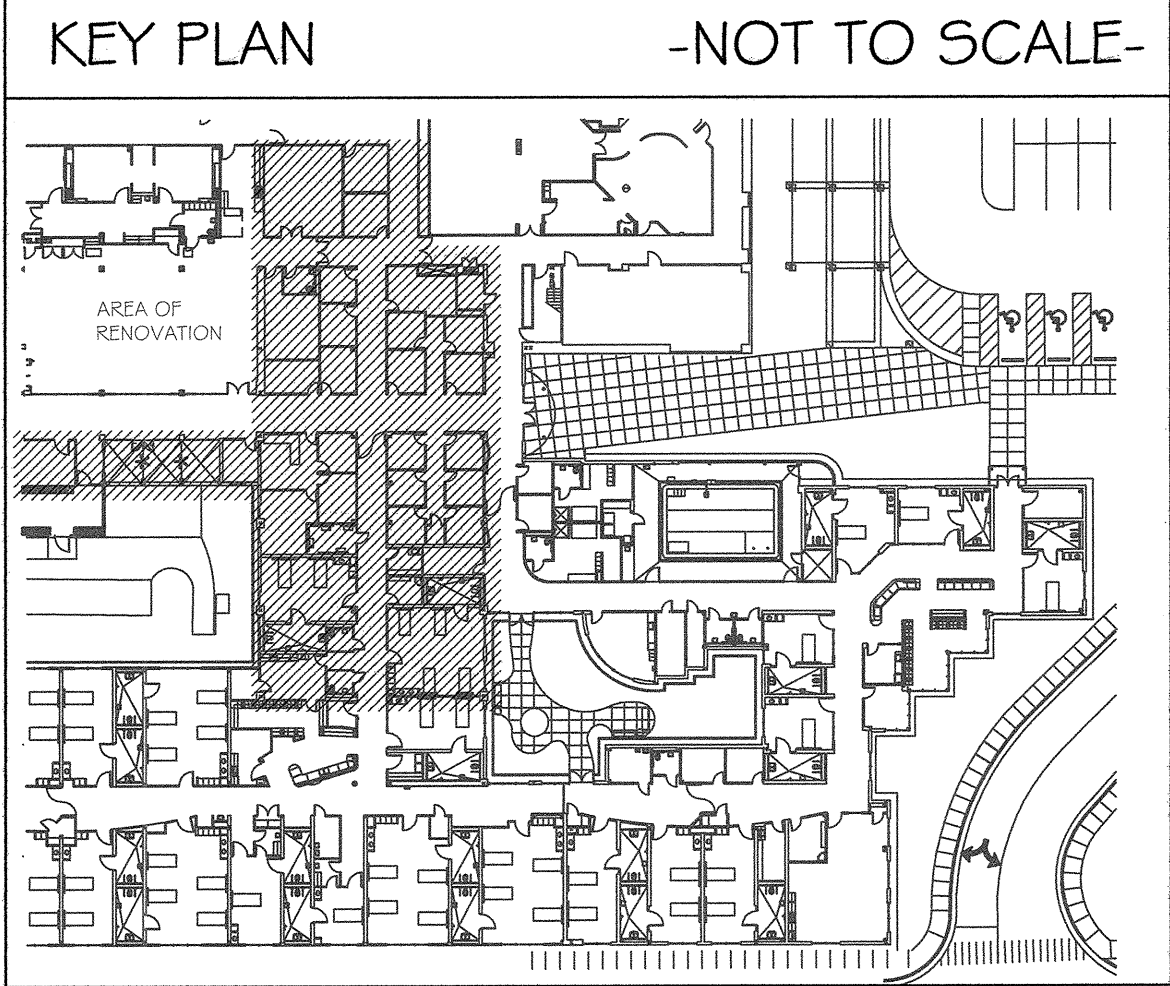
FIXTURE SCHEDULE		
TYPE	DESCRIPTION	MANUFACTURER
A	2' X 4' RECESSED INDIRECT/DIRECT FLUORESCENT, 3 LAMPS, PS ELECTRONIC BALLAST	DAY BRITE 2AV332 PMW UNV 1/3 PSEB
B	2' X 4' RECESSED 18 CELL PARABOLIC FLUORESCENT, (2)PS ELECTRONIC BALLAST	DAY BRITE 2LP3S332 36AL UNV 1/21 PSEB
C	4' STRIP FLUORESCENT, PS ELECTRONIC BALLAST WIRE GUARD	DAY BRITE T232 UNV 1/2 PSEB CG 4
D	6" RECESSED FLUORESCENT DOWNLIGHT, VERTICAL LAMP, PS ELECTRONIC BALLAST	OMEGA S642PLTU T6CS PSEB
E	2' X 4' RECESSED ACRYLIC FLUORESCENT, MIN. .125 #12 LENS (2) ELECTRONIC BALLAST	DAY BRITE 2TG8 432 12 UNV 2/2 PSEB
F	LED NIGHT LIGHT WITH PHOTO CELL	P&S TMHWLECC
G	2' X 4' RECESSED 18 CELL PARABOLIC FLUORESCENT, PS ELECTRONIC BALLAST	DAY BRITE 2LP3S332 36AL UNV 1/3 PSEB
H	2' X 4' RECESSED ACRYLIC FLUORESCENT, MIN. .125 #12 LENS ELECTRONIC BALLAST	DAY BRITE 2TG8 232 12 UNV 1/2 PSEB
K	3' SURFACE WALL MOUNTED FLUORESCENT, MIN. .125 #12 LENS ELECTRONIC BALLAST	DAY BRITE CB 225 W UNV 1/2 PSEB
L	LED WALL RECESSED "IN USE" FIXTURE, 277 VOLT INPUT	MCPHILBEN 30VL 1 P 12 W BW IN USE
X	EXIT LIGHT LED, RED LETTERS	McPHILBEN 55L R

1. FLUORESCENT LAMPS SHALL BE 4100 DEGREE KELVIN. COORDINATE CEILING TYPES (GRID OR GYP BOARD TYPE) WITH ARCHITECTUAL REFLECTIVE CEILING PLANS PRIOR TO ORDERING LIGHT FIXTURES. BALLASTS SHALL BE PROGRAMMED START TYPE

ADDITIONAL APPROVED MANUFACTURERS:  
TYPE A,B,C,E,G,H,K: LITHONIA, COLUMBIA  
TYPE D: OOTHAM, ARCHITEKTUR  
TYPE F,L,X: LITHONIA, DUAL LITE



1 LIGHTING/SPEAKER PLAN  
801-E3.0 SCALE: 1/8"=1'-0"



#### NOTES:

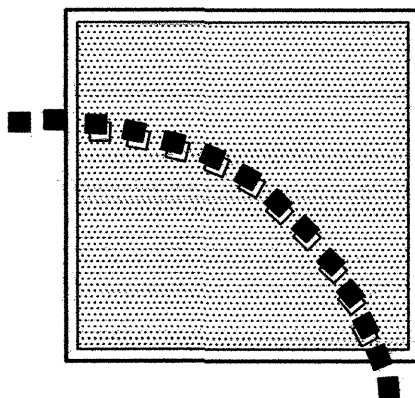
- 1
- 2 PROVIDE DIVIDER PLATE
- 3 TIE INTO 277 VOLT LIFE SAFETY LIGHTING CIRCUIT SERVING THIS CORRIDOR
- 4 TIE INTO 277 VOLT NORMAL LIGHTING CIRCUIT SERVING THIS CORRIDOR
- 5 INSTALLED (2) EXISTING 3 WAY SWITCHES AT THIS LOCATION. SWITCHES ARE LOCATED ABOVE CEILING WITH SPARE WIRE
- 6 TIE INTO 277 VOLT NORMAL LIGHTING CIRCUIT IN THIS ROOM
- 7 CONNECT TO NEAREST 120 VOLT UNSWITCHED EMERGENCY CIRCUIT
- 8 MOUNT IN COMMON BOX WITH RECEPTACLE, PROVIDE DIVIDER PLATE
- 9 EACH HOT SHALL HAVE A DEDICATED NEUTRAL
- 10 PROVIDE PIR/ULTRASONIC MOTION SENSOR FOR INBOARD/OUTBOARD LAMP CONTROL, SET FOR 30 MINS
- 11 PROVIDE PIR/ULTRASONIC MOTION SENSOR, SET FOR 30 MINS
- 12 MOUNT ABOVE DOOR AND PROVIDE PIR/ULTRASONIC MOTION SENSOR, SET FOR 30 MINS
- 13 RELOCATED SPEAKER, PROVIDE NEW GRILL AND CONNECT TO EXISTING PAGING CIRCUIT SERVING THIS AREA
- 14 RELOCATED WIRELESS ACCESS MODEM

#### GENERAL NOTES:

1. ALL 2'X4' LIGHT FIXTURES TYPE A UNLESS NOTED OTHERWISE
2. PROVIDE AMP(S) FOR NEW SPEAKERS. COORDINATE WITH OWNER FOR LOCATION WHERE NEW AMPS ARE TO BE INSTALLED

**EDC** ELECTRICAL ENGINEERS  
1201 BROAD ST., SUITE 1-A  
AUGUSTA, GA 30901  
PH: (706) 724-3551  
FAX: (706) 724-8507  
EDC PROJECT #: 11033

REVISIONS:	DATE:	DRAWN BY:
		S. THOMAS
		CHECKED BY:
		M. MONGRUE



**VIRGO GAMBILL**  
ARCHITECTS  
2531 CENTER WEST PARKWAY,  
SUITE 200  
AUGUSTA, GEORGIA 30909  
(706) 736-3661

MEMBERS OF THE  
AMERICAN INSTITUTE  
OF ARCHITECTS  
THIS DOCUMENT IS PROPERTY OF VIRGO GAMBILL ARCHITECTS. THE UNAUTHORIZED REPRODUCTION, COPYING, OR OTHERWISE USE OF THIS DOCUMENT IS STRICTLY PROHIBITED AND ANY INFRINGEMENT THEREUPON IS SUBJECT TO LEGAL ACTION.  
2007 © VIRGO GAMBILL ARCHITECTS

APPROVED BY:
MEDICAL CENTER DIRECTOR
APPROVED BY:
FACILITY MANAGEMENT SERV LINE EXEC

PROJECT TITLE:
RENOVATE "E" WING BUILDING 801, DOWNTOWN DIVISION AUGUSTA, GEORGIA
DRAWING TITLE:
LIGHTING/SPEAKER PLAN

DATE:
APRIL 29, 2011
VA PROJECT NO.
509-318E
DRAWING NO.
801-E3.0
DWG. 40 of 44



Department of Veterans Affairs  
VAMC Augusta, Georgia  
Engineering Department (138)