

NOTES:

- 1 VOICE/DATA CONDUIT SHALL TERMINATE TO LOW VOLTAGE BOX AT BED LOCATOR UNIT. COORDINATE JACK LOCATION WITH OWNER PRIOR TO INSTALLATION
- 2 PROVIDE (2) 4 FT. 8FT FIRE RATED PLYWOOD BACK BOARDS. TERMINATE RELOCATED 100 PAIR CABLE FROM ROOM 1E116 TO 110 BLOCKS. MOUNT BLOCKS TO BACK BOARD. TERMINATE RELOCATED 100 PAIR CABLE FROM THIS ROOM TO 110 BLOCKS. MOUNT BLOCKS TO BACK BOARD. MOUNT 110 BLOCKS FOR RELOCATED STATION TELEPHONE CABLES TO BACKBOARD. MOUNT RELOCATED CABLE TV AMP AND SPLITTERS ON BACK BOARD. PROVIDE #12 GROUND WIRE FROM EACH SPLITTER AND TERMINATE TO GROUND BAR IN THIS ROOM
- 3 PROVIDE NEW SURFACE MOUNTED FIBER JUNCTION BOX (ORTRONICS 615SMFC-12P). MOUNT TO 4FT. 8FT FIRE RATED PLYWOOD BACK BOARD AND TERMINATE UNUSED FIBER TO JUNCTION BOX. COORDINATE FIBER AND FIBER JUNCTION BOX WITH THE VA (RICHARD JEFFERIES 706.729.5899) PRIOR TO INSTALLATION. PROVIDE NEW GROUND BAR (B-LINE: SB476) WITH #6 INSULATED GROUND WIRE IN 5' C BACK TO PANEL EDGPA
- 4 PROVIDE NEW RACK AND PATCH PANELS. COORDINATE TYPE OF RACK AND PATCH PANELS WITH THE VA (RICHARD JEFFERIES 706.729.5899) PRIOR TO INSTALLATION. PROVIDE QUANTITY OF PATCH PANELS REQUIRED FOR NEW DATA OUTLETS AND RELOCATED DATA CABLES FROM CLOSET 1E-127. REFER TO SPECIFICATIONS SECTION 27 15 00 FOR CABLING REQUIREMENTS

GENERAL NOTES:

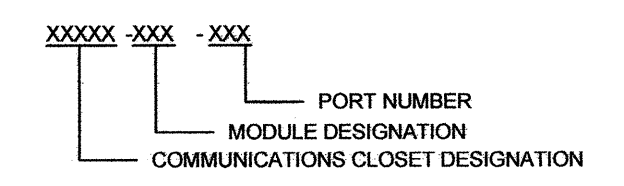
1. PROVIDE 1" CONDUIT WITH CABLES FROM EACH VOICE/DATA OUTLET TO VOICE/DATA CLOSET. REFER TO CABLING LEGEND ON THIS SHEET

CABLING LEGEND

WALL MOUNTED (UNLESS NOTED OTHERWISE ON DRAWINGS) COMBINATION VOICE/DATA OUTLET. REFER TO DRAWING FOR QUANTITY OF CABLE DROPS TO SERVE VOICE/DATA OUTLETS. PROVIDE ONE CATEGORY 5e JACK FOR EACH CABLE

GENERAL NOTES (DATA/VOICE CABLING):

1. ADDITIONAL WALL SLEEVES AND WALL PENETRATIONS. WILL BE REQUIRED FOR NETWORK CABLING. PROVIDE AS NECESSARY AND FIRESTOP ALL PENETRATIONS THROUGH RATED WALLS
2. DATA JACKS SHALL BE LABELED WITH FOLLOWING NOMENCLATURE:

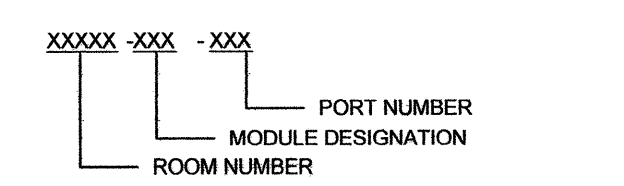


VOICE JACKS SHALL BE LABELED WITH FOLLOWING NOMENCLATURE:

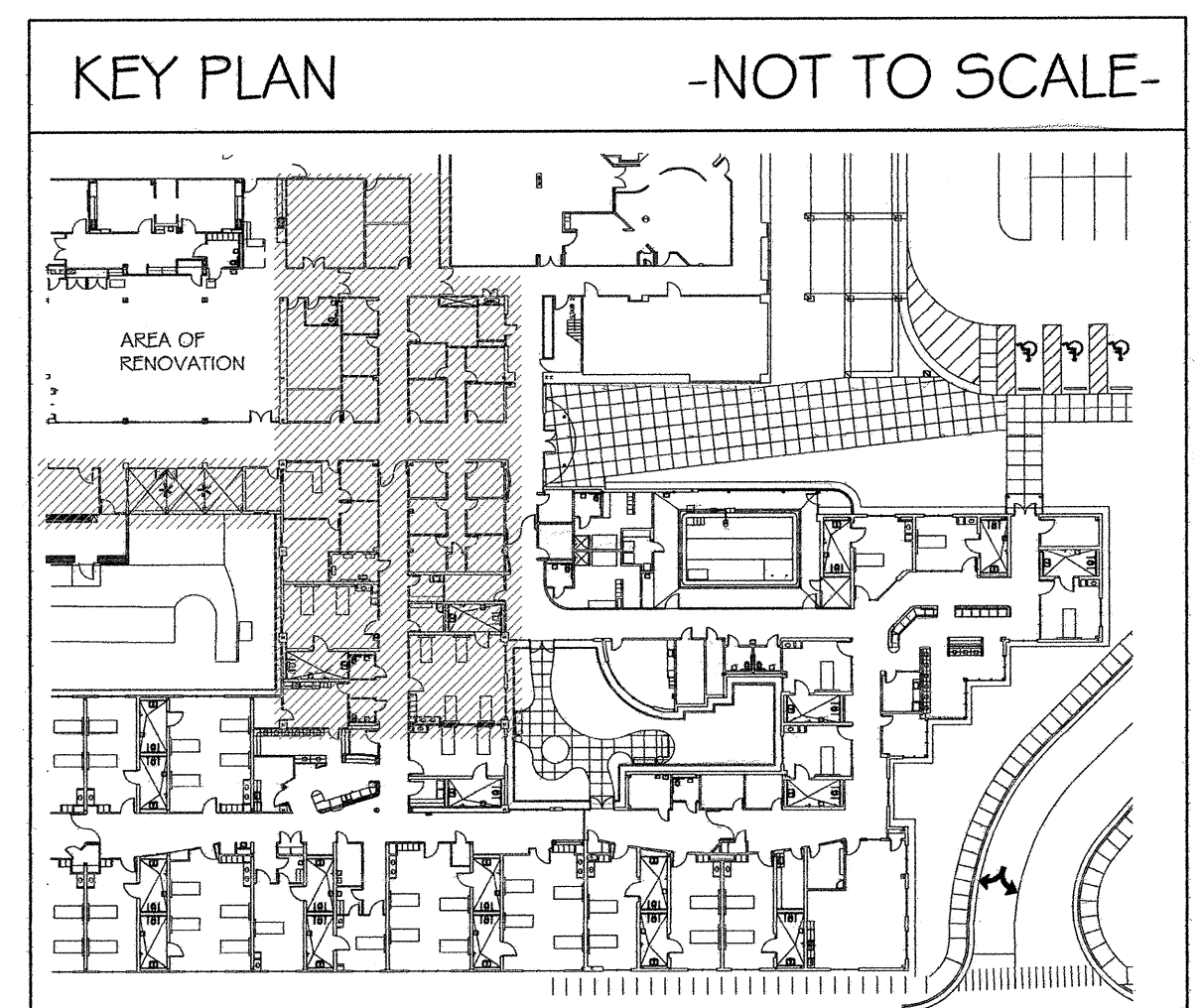


COORDINATE FINAL COMMUNICATIONS CLOSET DESIGNATIONS, SWITCH DESIGNATIONS AND PORT NUMBERS WITH OWNER PRIOR TO LABELING

3. DATA PATCH PANELS SHALL BE LABELED WITH FOLLOWING NOMENCLATURE:



4. COORDINATE FINAL ROOM NUMBERS, SWITCH DESIGNATIONS AND PORT NUMBERS WITH OWNER PRIOR TO LABELING

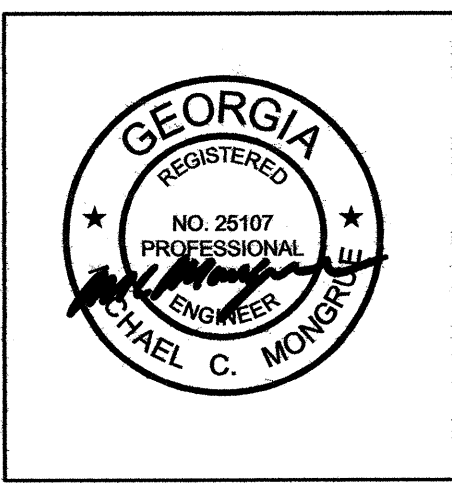


1 VOICE/DATA PLAN
801-E5.0 SCALE: 1/8"=1'-0"



ELECTRICAL DESIGN
EDC
ELECTRICAL ENGINEERS
1201 BROAD ST., SUITE 1-A
AUGUSTA, GA 30901
PH: (706) 724-3551
FAX: (706) 724-8807
EDC PROJECT # 11033

REVISIONS:	DATE:	DRAWN BY:
		S. THOMAS
		CHECKED BY:
		M. MONGRUE



VIRGO GAMBILL
ARCHITECTS
2531 CENTER WEST PARKWAY,
SUITE 200
AUGUSTA, GEORGIA 30909
(706) 736-3661

MEMBERS OF THE
AMERICAN INSTITUTE
OF ARCHITECTS
THIS DOCUMENT IS PROPERTY OF VIRGO
GAMBILL ARCHITECTS. THE UNAUTHORIZED
REPRODUCTION, COPYING, OR OTHERWISE
USE OF THIS DOCUMENT IS STRICTLY
PROHIBITED AND ANY INFRINGEMENT
THEREUPON IS SUBJECT TO LEGAL ACTION.
2007 © VIRGO GAMBILL ARCHITECTS

APPROVED BY:
MEDICAL CENTER DIRECTOR
APPROVED BY:
FACILITY MANAGEMENT SERV LINE EXEC

PROJECT TITLE:
**RENOVATE "E" WING
BUILDING 801, DOWNTOWN DIVISION
AUGUSTA, GEORGIA**
DRAWING TITLE:
VOICE / DATA PLAN

DATE:
APRIL 29, 2011
VA PROJECT NO.
509-318E
DRAWING NO.
801-E5.0
DWG. 42 of 44

