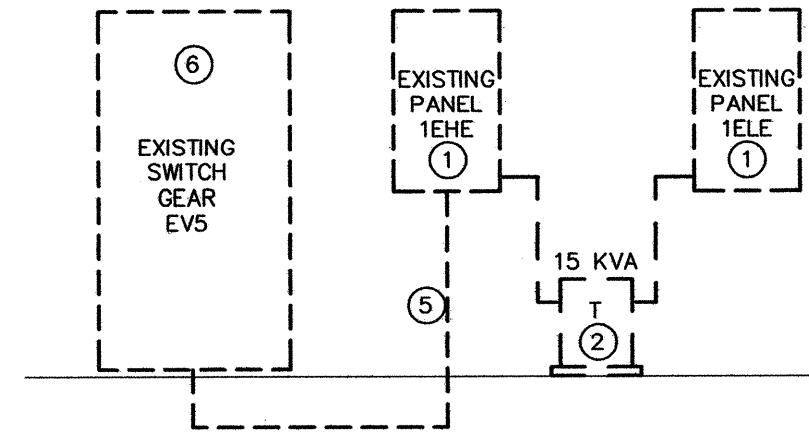
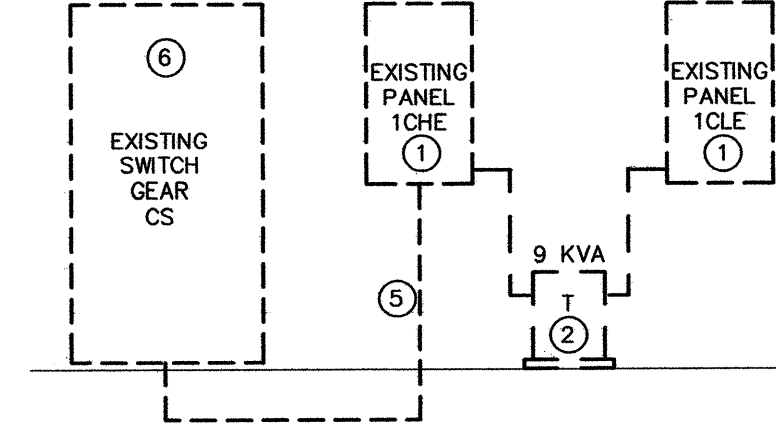


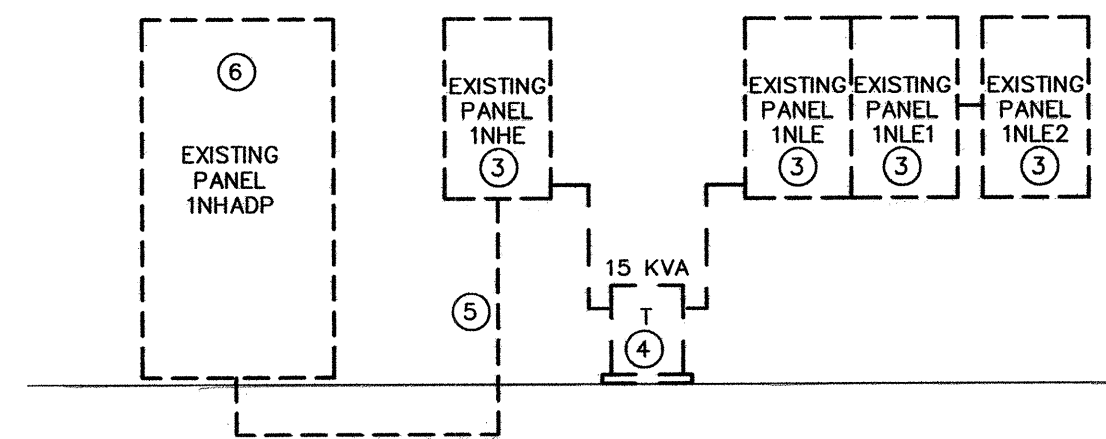
1 EXISTING NORMAL BRANCH RISER DIAGRAM ROOM 1E-102  
801-E7.0 SCALE: NONE



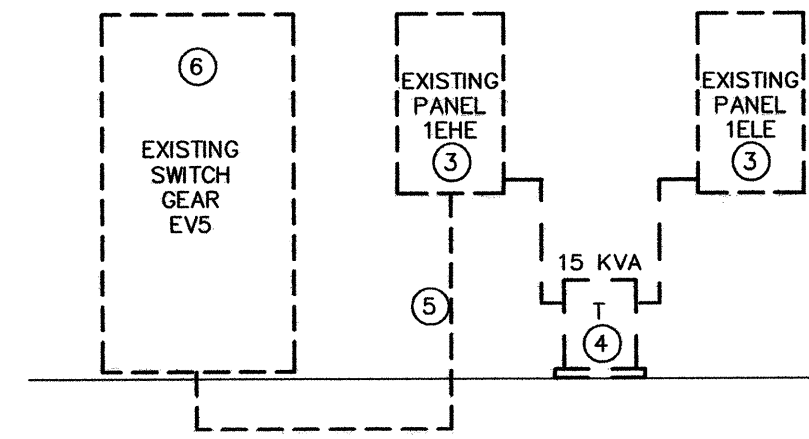
2 EXISTING EQUIPMENT BRANCH RISER DIAGRAM ROOM 1E-102  
801-E7.0 SCALE: NONE



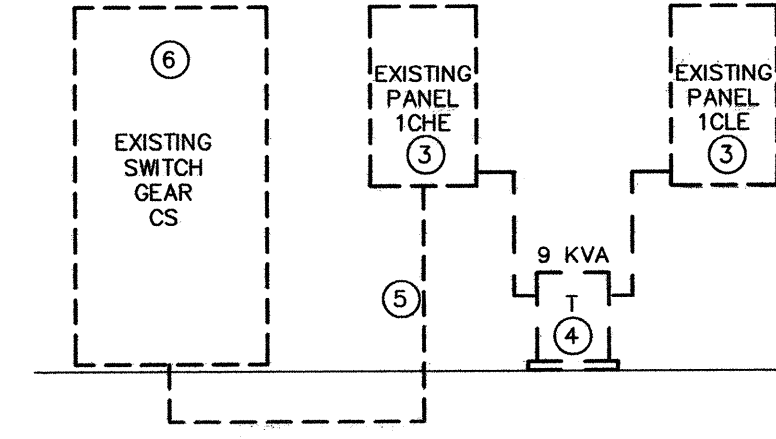
3 EXISTING CRITICAL BRANCH RISER DIAGRAM ROOM 1E-102  
801-E7.0 SCALE: NONE



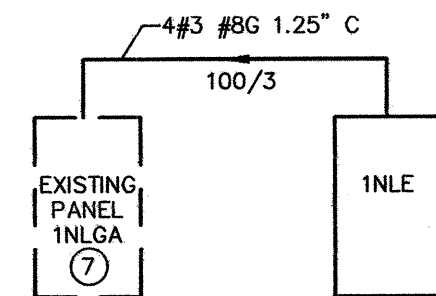
4 EXISTING NORMAL BRANCH RISER DIAGRAM ROOM 1A-123  
801-E7.0 SCALE: NONE



5 EXISTING EQUIPMENT BRANCH RISER DIAGRAM ROOM 1A-123  
801-E7.0 SCALE: NONE



6 EXISTING CRITICAL BRANCH RISER DIAGRAM ROOM 1A-123  
801-E7.0 SCALE: NONE



7 NORMAL BRANCH RISER DIAGRAM  
801-E7.0 SCALE: NONE

## NOTES:

- REMOVE THIS PANEL BOARD, LOCATED IN ROOM 1E-102 AND ANY CONDUIT OR WIRING COMING INTO IT OR GOING OUT OF IT.
- REMOVE THIS TRANSFORMER(S), LOCATED IN ROOM 1E-102 AND ANY CONDUIT COMING INTO IT OR GOING OUT OF IT, HOUSE KEEPER PAD AND THE GROUND CONDUCTOR COMING FROM THE TRANSFORMER
- REMOVE THIS PANEL BOARD, LOCATED IN ROOM 1A-123 AND ANY CONDUIT OR WIRING COMING INTO IT OR GOING OUT OF IT
- REMOVE THIS TRANSFORMER(S), LOCATED IN ROOM 1A-123 AND ANY CONDUIT COMING INTO IT OR GOING OUT OF IT, HOUSE KEEPER PAD AND THE GROUND CONDUCTOR COMING FROM THE TRANSFORMER
- REMOVE THE FEEDER SERVING THIS PANEL BACK TO IT SOURCE, CUT CONDUIT OFF BELOW THE FLOOR AND FILLED WITH CONCRETE OR REMOVE CONDUIT OVERHEAD
- FIELD VERIFY LOCATION OF THIS SWITCH GEAR OR PANEL BOARD, RELABEL BREAKERS THAT WAS SERVING PANELS BEING REMOVED
- REMOVE (3) 2011 CIRCUIT BREAKERS (CKTS 31,33,35) AND PROVIDE 100'S SIEMENS CIRCUIT BREAKER FOR SIEMENS TYPE P1 PANEL BOARD. REVISE PANEL BOARD DIRECTORY

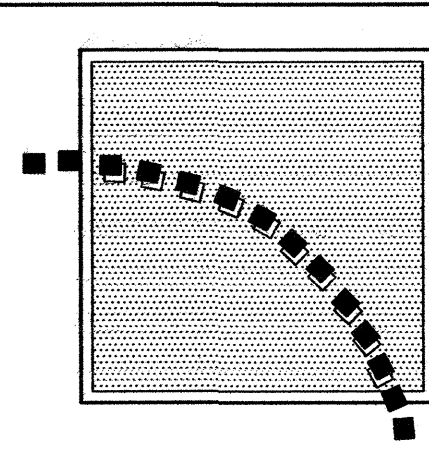
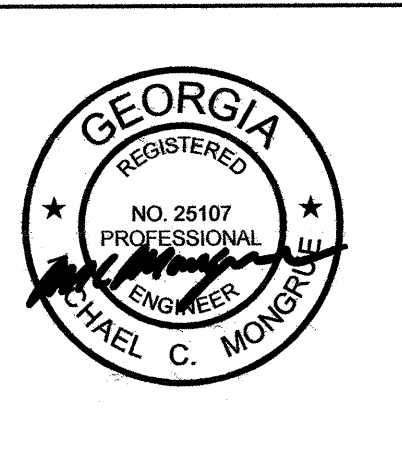
| VOLTAGE 120/208     |       | PANEL 1NLE    |         | LOCATION         |      |               |               |             |
|---------------------|-------|---------------|---------|------------------|------|---------------|---------------|-------------|
| PHASE 3 WIRE 4      |       | MAIN AMPS 100 |         | MOUNTING SURFACE |      |               |               |             |
|                     |       |               |         | MAIN LUGS        |      |               |               |             |
| SERVING             | VA    | BREAKER AMPS  | CKT NO. | BREAKER P AMPS   | VA   | SERVING       |               |             |
| EXISTING LOAD       |       | 20            | 1       | 2                | 1 20 | EXISTING LOAD |               |             |
| EXISTING LOAD       |       | 20            | 1       | 3                | 4    | 1 20          | EXISTING LOAD |             |
| EXISTING LOAD       |       | 20            | 1       | 5                | 6    | 1 20          | EXISTING LOAD |             |
| EXISTING LOAD       |       | 20            | 1       | 7                | 8    | 1 20          | EXISTING LOAD |             |
| EXISTING LOAD       |       | 20            | 1       | 9                | 10   | 1 20          | EXISTING LOAD |             |
| EXISTING LOAD       |       | 20            | 1       | 11               | 12   | 1 20          | EXISTING LOAD |             |
| EXISTING LOAD       |       | 20            | 1       | 13               | 14   | 1 20          | EXISTING LOAD |             |
| EXISTING LOAD       |       | 20            | 1       | 15               | 16   | 1 20          | EXISTING LOAD |             |
| EXISTING LOAD       |       | 20            | 1       | 17               | 18   | 1 20          | EXISTING LOAD |             |
| EXISTING LOAD       |       | 20            | 1       | 19               | 20   | 1 20          | EXISTING LOAD |             |
| EXISTING LOAD       |       | 20            | 1       | 21               | 22   | 1 20          | EXISTING LOAD |             |
| EXISTING LOAD       |       | 20            | 1       | 23               | 24   | 1 20          | EXISTING LOAD |             |
| EXISTING LOAD       |       | 20            | 1       | 25               | 26   | 1 20          | EXISTING LOAD |             |
| EXISTING LOAD       |       | 20            | 1       | 27               | 28   | 1 20          | EXISTING LOAD |             |
| EXISTING LOAD       |       | 20            | 1       | 29               | 30   | 1 20          | EXISTING LOAD |             |
| EXISTING LOAD       |       | 20            | 1       | 31               | 32   | 1             | SPACE         |             |
| EXISTING LOAD       |       | 20            | 2       | 33               | 34   | 2 20          | EXISTING LOAD |             |
|                     |       |               | 35      | 36               |      |               |               |             |
| EXISTING LOAD       |       | 20            | 2       | 37               | 38   | 2 20          | EXISTING LOAD |             |
|                     |       |               | 39      | 40               |      |               |               |             |
| RECEPTACLES         | 1,440 | 20            | 1       | 41               | 42   | 1 20          | 1,800         | RECEPTACLES |
| RECEPTACLES         | 1,620 | 20            | 1       | 43               | 44   | 1 20          | 1,440         | RECEPTACLES |
| RECEPTACLES         | 1,440 | 20            | 1       | 45               | 46   | 1 20          | 1,620         | RECEPTACLES |
| SPARE               |       | 20            | 1       | 47               | 48   | 1             |               | SPACE       |
| SPARE               |       | 20            | 1       | 49               | 50   | 1             |               | SPACE       |
| SPARE               |       | 20            | 1       | 51               | 52   | 1             |               | SPACE       |
| SPARE               |       | 20            | 1       | 53               | 54   | 1             |               | SPACE       |
| SPARE               |       | 20            | 1       | 55               | 56   | 1             |               | SPACE       |
| SPARE               |       | 20            | 1       | 57               | 58   | 1             |               | SPACE       |
| SPARE               |       | 20            | 1       | 59               | 60   | 1             |               | SPACE       |
| SPARE               |       | 20            | 1       | 61               | 62   | 1             |               | SPACE       |
| SPARE               |       | 20            | 1       | 63               | 64   | 1             |               | SPACE       |
| SPARE               |       | 20            | 1       | 65               | 66   | 1             |               | SPACE       |
| SPARE               |       | 20            | 1       | 67               | 68   | 1             |               | SPACE       |
| SPARE               |       | 20            | 1       | 69               | 70   | 1             |               | SPACE       |
| SPARE               |       | 20            | 1       | 71               | 72   | 1             |               | SPACE       |
| REMARKS: 10,000 AIC |       |               |         |                  |      |               |               |             |

REMARKS:10,000 AIC

ELECTRICAL DESIGN ELECTRICAL ENGINEERS  
1201 BROAD ST., SUITE 1-A  
AUGUSTA, GA 30901  
PH: (706) 724-3551  
FAX: (706) 724-8507  
EDC PROJECT # 11033

| REVISIONS: | DATE: |
|------------|-------|
|            |       |
|            |       |
|            |       |
|            |       |
|            |       |

|             |            |
|-------------|------------|
| DRAWN BY:   | S. THOMAS  |
| CHECKED BY: | M. MONGRUE |



VIRGO GAMBILL  
ARCHITECTS  
2531 CENTER WEST PARKWAY,  
SUITE 200  
AUGUSTA, GEORGIA 30909  
(706) 736-3661

MEMBERS OF THE  
AMERICAN INSTITUTE  
OF ARCHITECTS  
THIS DOCUMENT IS PROPERTY OF VIRGO  
GAMBILL ARCHITECTS. THE UNAUTHORIZED  
REPRODUCTION, COPYING, OR OTHERWISE  
USE OF THIS DOCUMENT IS STRICTLY  
PROHIBITED AND ANY INFRINGEMENT  
THEREUPON IS SUBJECT TO LEGAL ACTION.  
2007 © VIRGO GAMBILL ARCHITECTS

|                                    |  |
|------------------------------------|--|
| APPROVED BY:                       | PROJECT TITLE:   |
| MEDICAL CENTER DIRECTOR            | RENOVATE "E" WING<br>BUILDING 801, DOWNTOWN DIVISION<br>AUGUSTA, GEORGIA |
| APPROVED BY:                       | DRAWING TITLE:   |
| FACILITY MANAGEMENT SERV LINE EXEC | PANELBOARD AND RISER DIAGRAM   |

|                |                |
|----------------|----------------|
| DATE:          | APRIL 29, 2011 |
| VA PROJECT NO. | 509-318E       |
| DRAWING NO.    | 801-E7.0       |
| DWG. 44 of 44  |                |

Department of Veterans Affairs  
VAMC Augusta, Georgia  
Engineering Department (138)