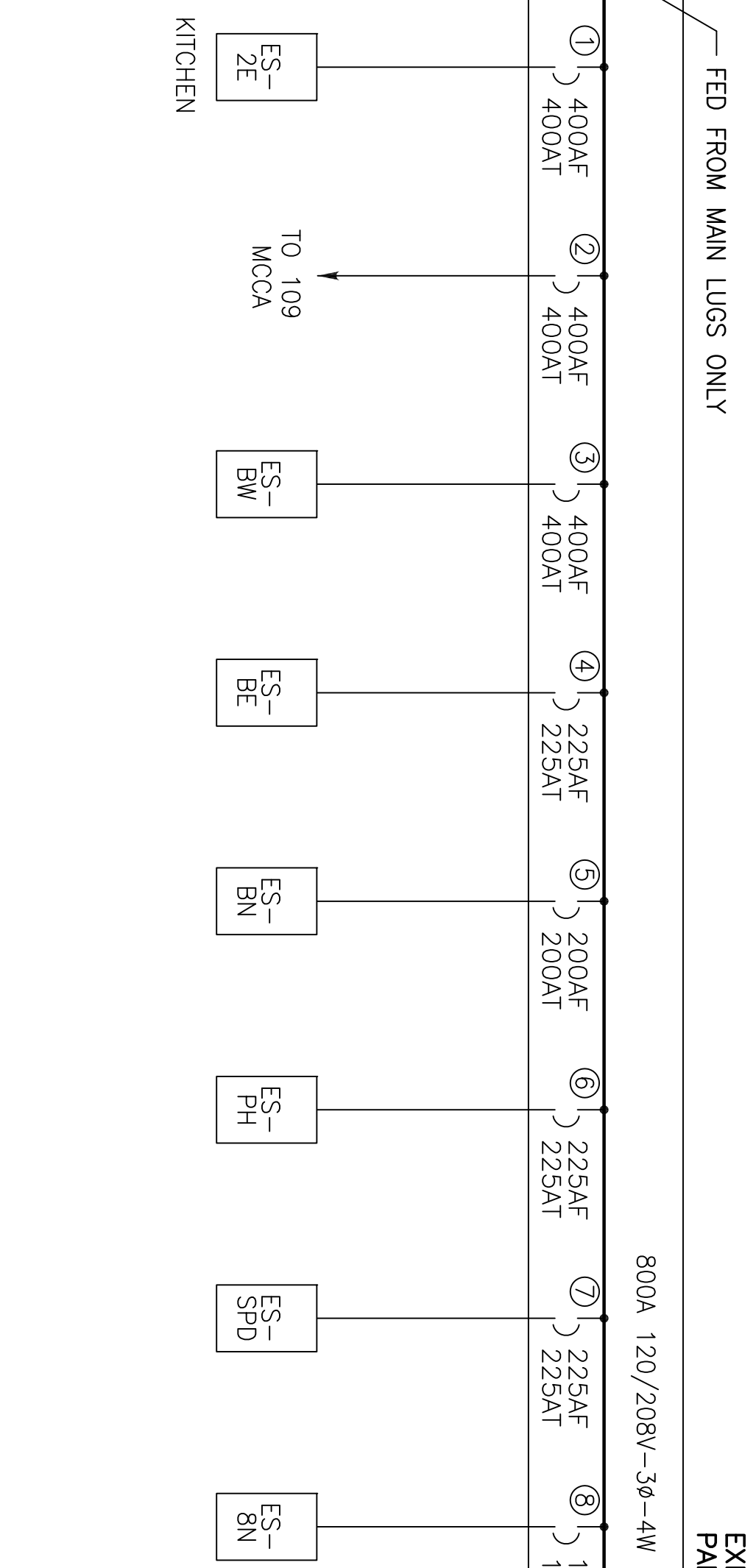
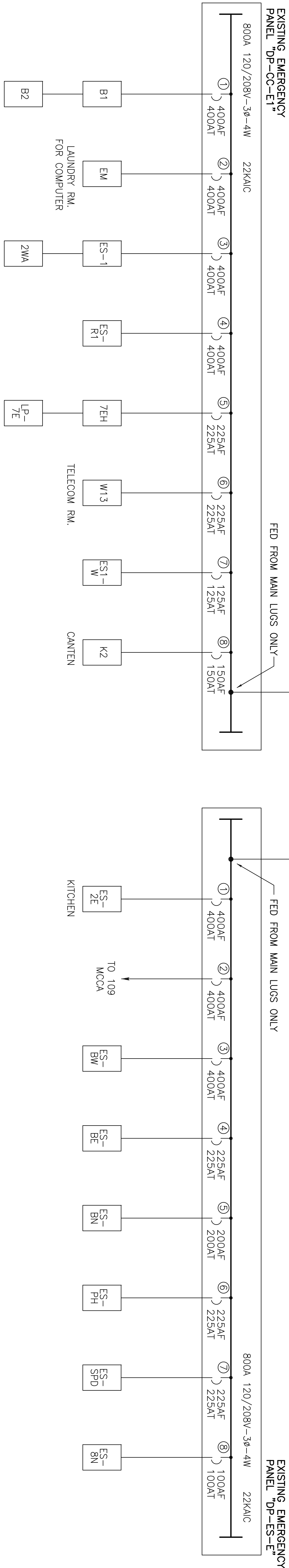
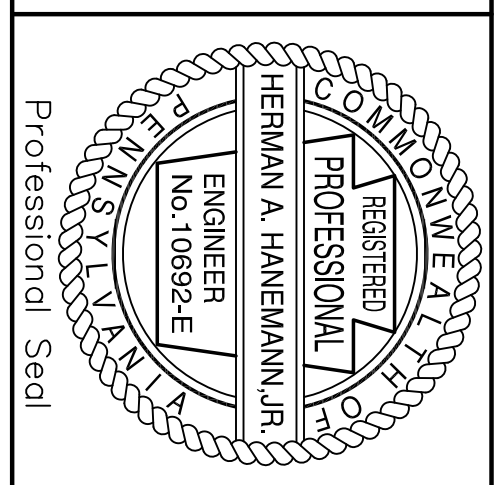


- ## NOTES:
1. FOR SYMBOLS AND ABBREVIATIONS, REFER TO DRAWING EDO.
  2. EACH OVER-CURRENT PROTECTION DEVICE INDICATED IS BASED SOLELY ON DATA ACCUMULATED DURING SURVEY. CONNECTED LOADS HAVE NOT BEEN CONFIRMED DUE TO SCOPE OF WORK LIMITATIONS. TYPICAL FOR EACH.
  3. ALL ELECTRICAL EQUIPMENT AND WIRING SHOWN IN A LIGHT LINE IS EXISTING TO REMAIN.
  4. ALL ELECTRICAL EQUIPMENT AND WIRING SHOWN IN A DARK, SOLID LINE IS NEW WORK UNDER THIS CONTRACT.
  5. JUNCTION AND PULL BOXES ARE NOT NECESSARILY SHOWN ON THIS DRAWING AND SHALL BE PROVIDED WHERE NECESSARY AND SIZED IN ACCORDANCE WITH THE NATIONAL ELECTRIC CODE AND INSTALLED WHERE REQUIRED.
  6. UNLESS OTHERWISE NOTED ALL DEVICES ARE THREE (3) PHASE.

[illegible]

--



**ENGINEER:**

GARY TRAVINSKI ASSOCIATES



**COMMISSIONING**

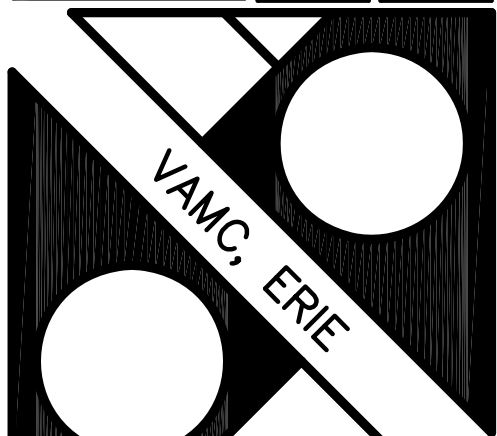
**PROJECT MANAGEMENT**

94 BOSTON HILL - LARKSVILLE, PENNSYLVANIA 18651 - Telephone: (570) 779-7843 - [WWW.GTAENG.COM](http://WWW.GTAENG.COM)

Drawing Title
SLD – NEW/EXIST. ELECTRICAL DISTR.
Approved: Project Manager EMILY McDONALD
Approved: Service Chief SUSAN LANG

Project Title		
REPLACE ELECTRICAL SWITCHGEAR		
Building Number	Checked D.A.O.	Drawn D.A.O.
ALL		
Location		
WAG. ERIE PENNSYLVANIA		

Date	01-28-11
Project No.	562-07-101
Drawing No.	E-2.2
Dwg. _ of _	



Department of  
Veterans Affairs

AS-BUILT SET