

A

B

C

D

E

F

A

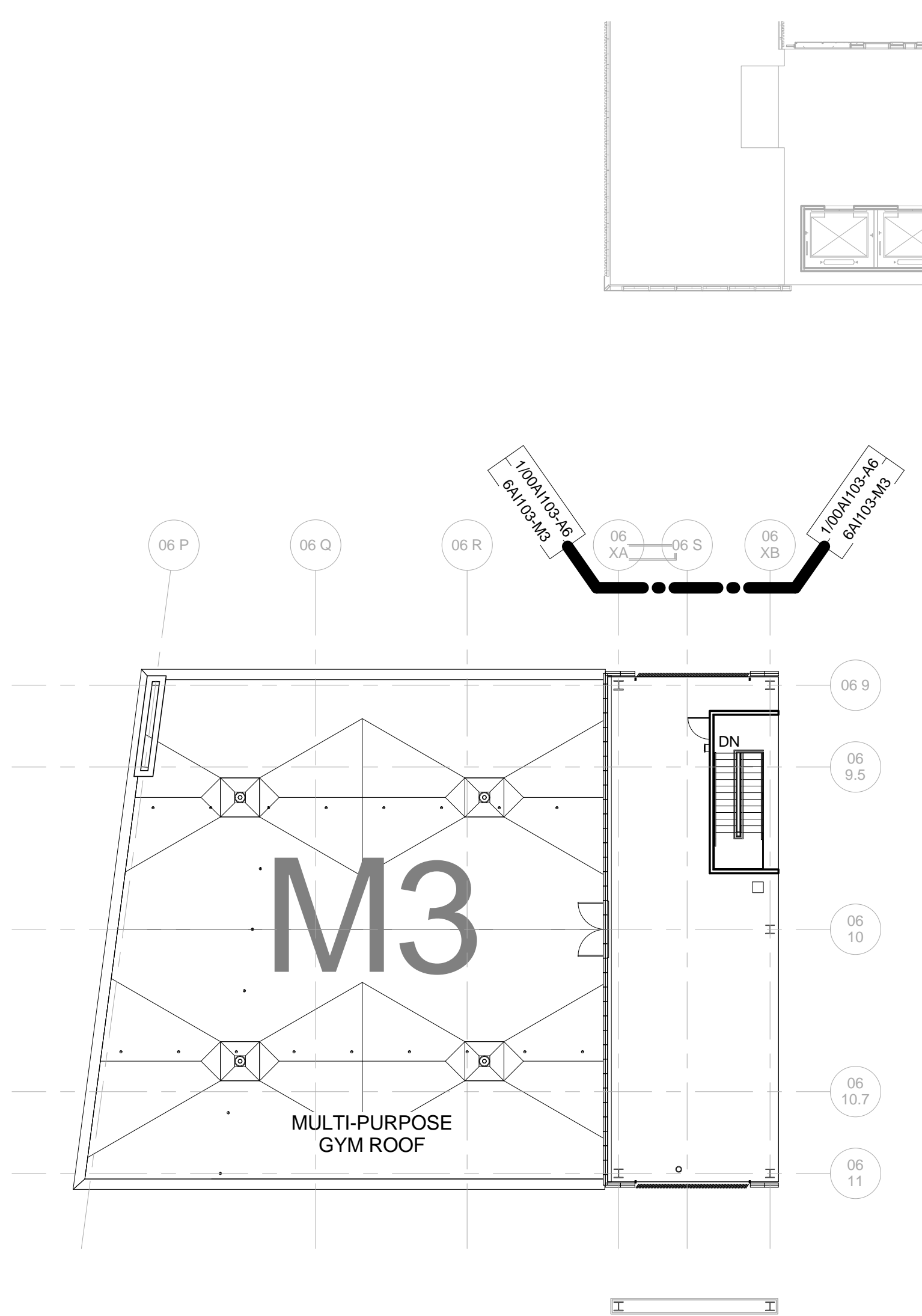
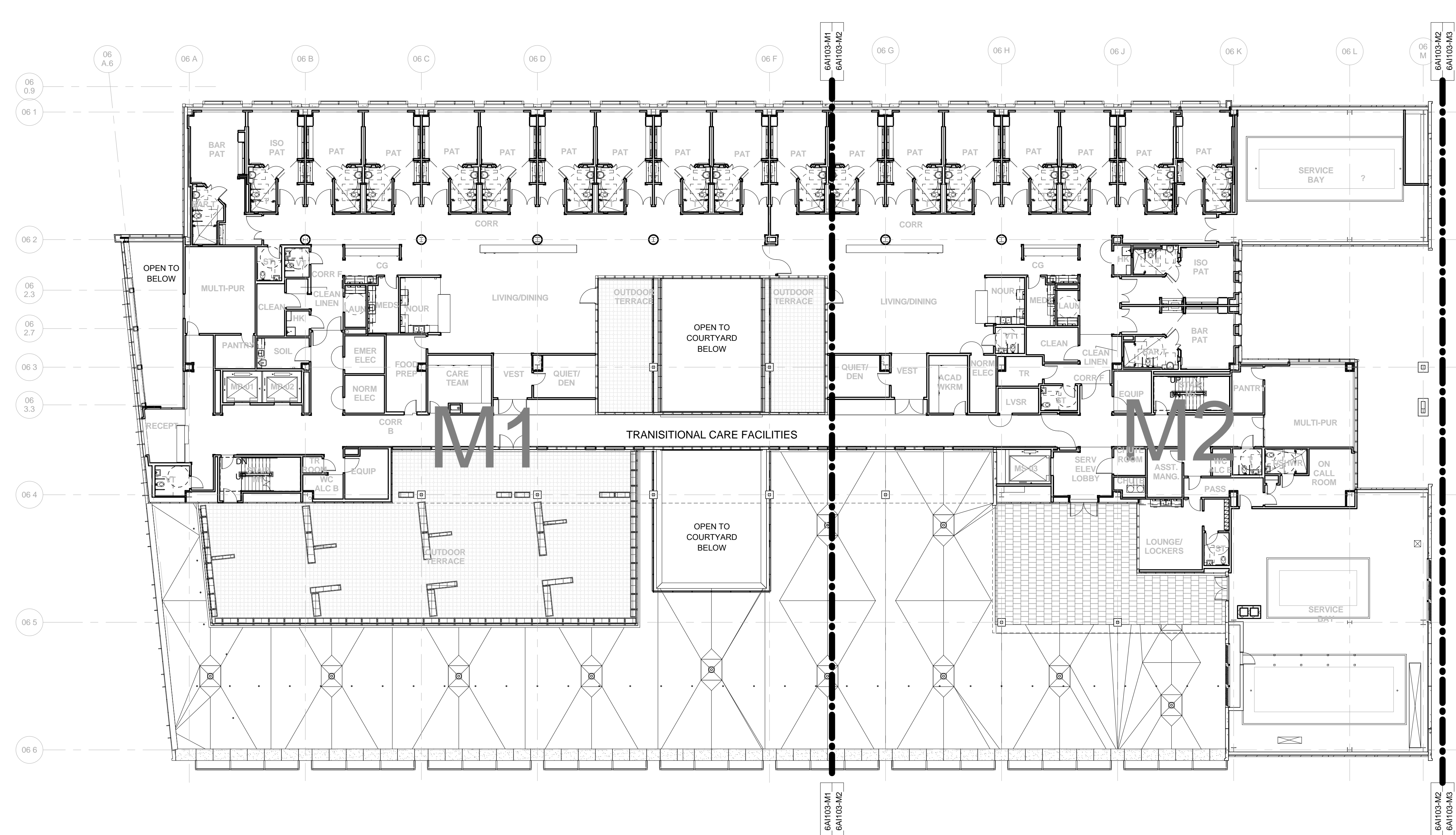
B

C

D

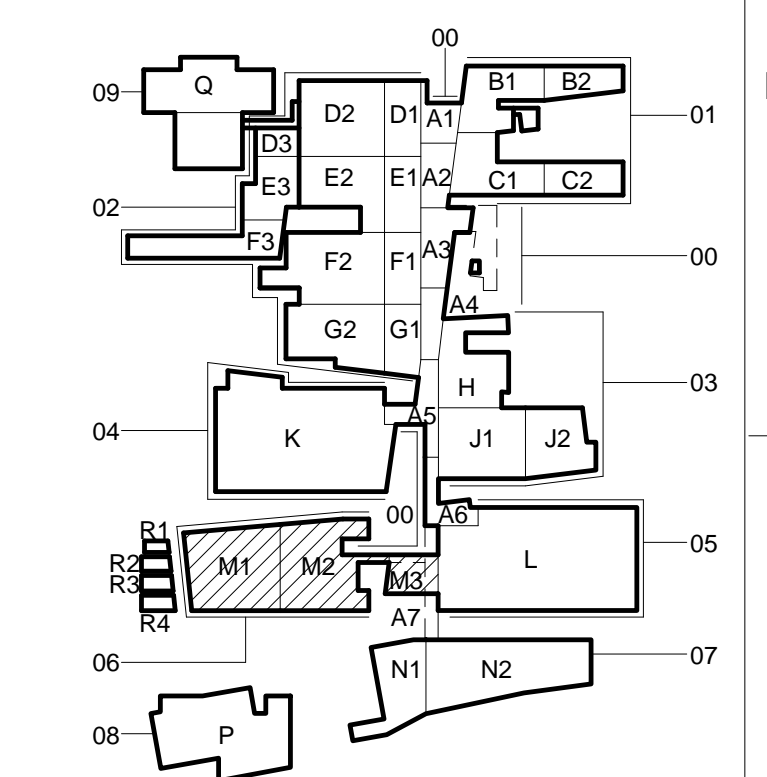
E

F



REFER TO SKETCH:
SK-8-4-RW 6A1103

1 BLDG 6 OVERALL THIRD FLOOR PLAN
SCALE: 1/16" = 1'-0"



CONSTRUCTION DOCUMENTS 1
FULLY SPRINKLERED

CONSULTANTS: DESMAN ASSOCIATES / PARKING CODE CONSULTANTS, INC. / CODE CONSULTANT THE SEXTANT GROUP / AV & ACOUSTICAL HAMMER DESIGN ASSOCIATES / FOOD SERVICE PYBURN & ODOM / ABATEMENT TATA & HOWARD / TANK CONSULTANT I.S.C. GROUP, INC. / IRRIGATION DAN EUSER WATER ARCHITECTURE, INC. / WATER FEATURE		ARCHITECT/ENGINEERS: studio NOVA SCHRENK & PETERSON CONSULTING ENGINEERS / CIVIL KORDA / NEMETH ENGINEERING / STRUCTURAL BR+A CONSULTING ENGINEERS / MECH, ELECT, PLUMBING, LOW VOLTAGE ARCHITECTURAL ENGINEERING / PLUMBING SCALES ASSOCIATES / FIRE PROTECTION COMMUNICATIONS DESIGN GROUP / LOW VOLTAGE		DRAWING TITLE BLDG 6 OVERALL THIRD FLOOR PLAN	PROJECT TITLE SLV/HCS REPLACEMENT MEDICAL CENTER PROJECT	PROJECT NUMBER 629-HS2-401	BUILDING NUMBER 06	OFFICE OF CONSTRUCTION AND FACILITES MANAGEMENT	
REVISIONS:		DATE		APPROVED: PROJECT DIRECTOR <i>J. J. J. J.</i>	LOCATION NEW ORLEANS, LOUISIANA	DATE February 29, 2012	CHECKED MD	DRAWN AD	DRAWING NUMBER 6A1103