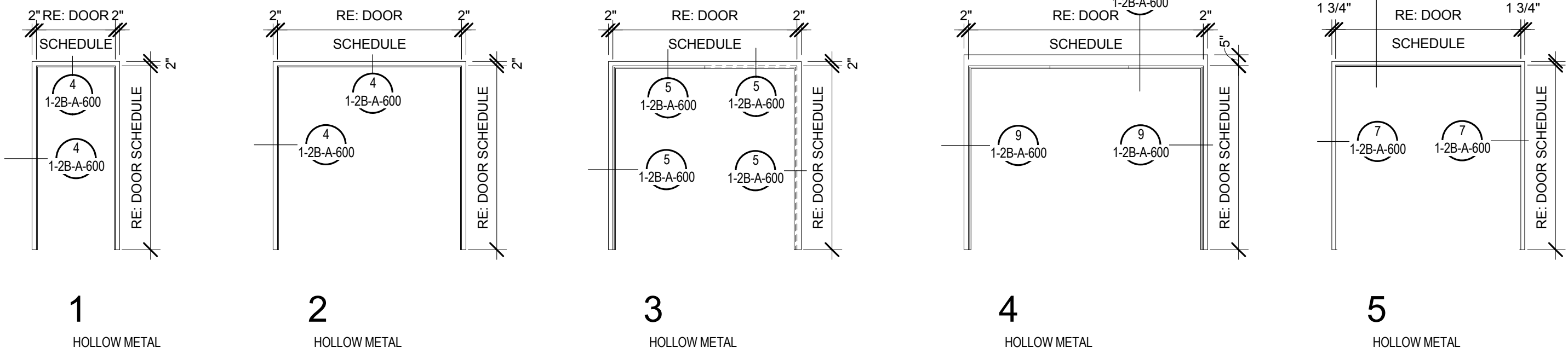


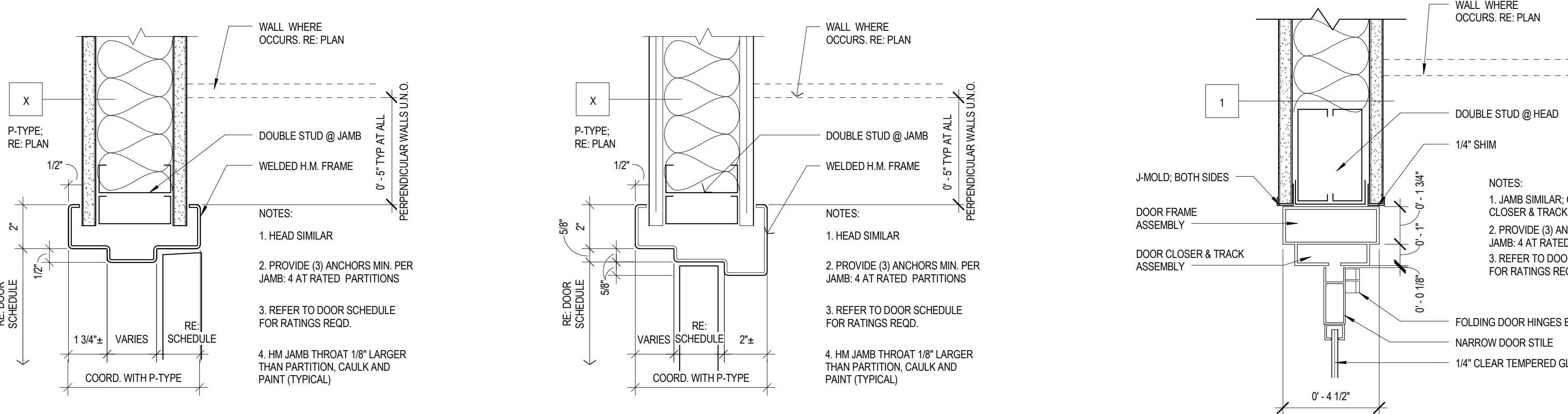
1 PHASE 2B - DOOR TYPES

1/4" = 1'-0"



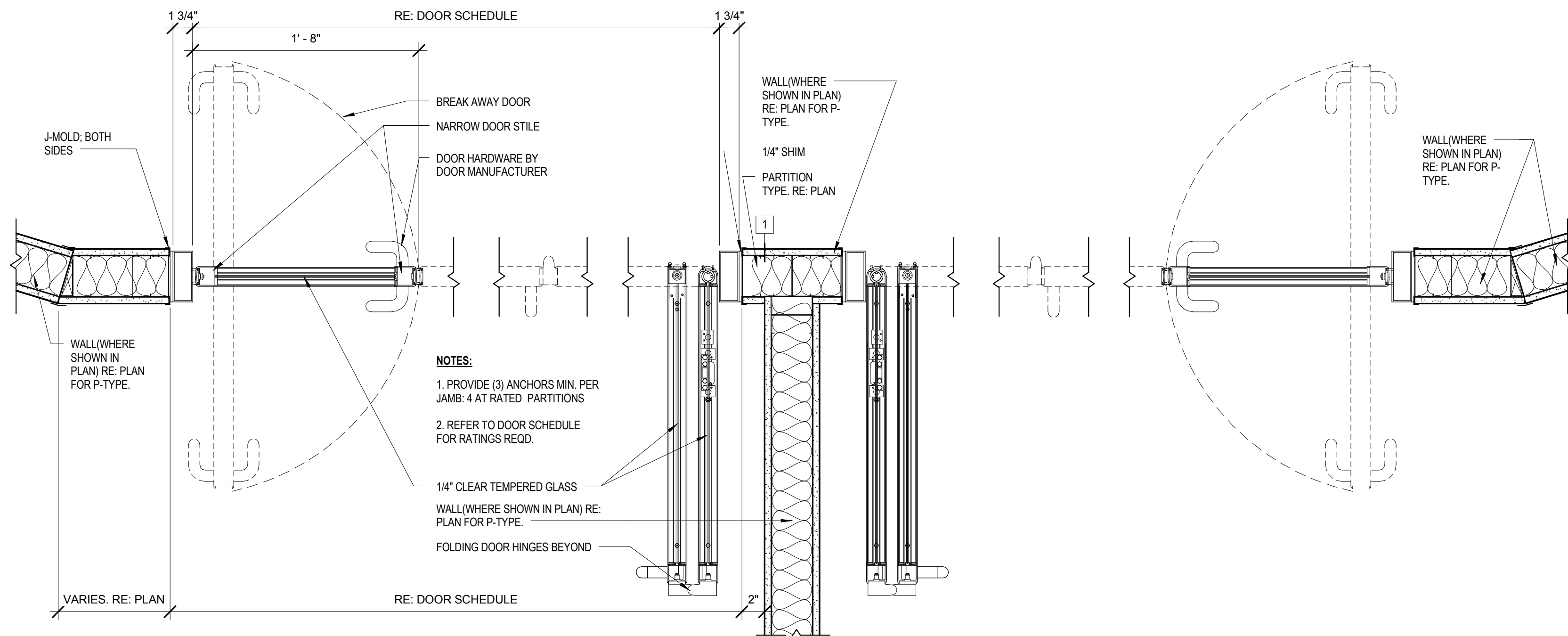
2 PHASE 2B - FRAME TYPES

1/4" = 1'-0"



4 PHASE 2B - DETAIL - HM DOOR JAMB

3" = 1'-0"



7 PHASE 2B - DETAIL - HM SICU BAY DOOR JAMB

1 1/2" = 1'-0"

Revisions:	Date
A04 Revision A00004	06/06/16

CONSULTANTS:

ARCHITECT/ENGINEERS:

FoxArchitects

One Memorial Drive
Suite 1800
Saint Louis, MO 63102

Tel 314.621.4343
Fax 314.621.0261



SSC

Swim, Schuchat, & Cornett
Engineering, Inc.
MEP & Structural Engineer
18207 Edison Avenue
Chesterfield, MO 63005

Tel 636.530.7770
Fax 636.530.7877

Drawing Title

OPENING SCHEDULE - PHASE 2B

Approved: Associate Director

Approved: Chief of Staff

Approved: Infection Control

Approved: Chief Engineer

Approved: Safety Officer

Approved: Chief, Police & Security

Project Title

PHASE 2B: Renovation of Operating Rooms, ER & Triage

Location V.A.M.C. ST. LOUIS, MO
JOHN COCHRAN DIVISION

Date 06/06/16

Checked JB

Drawn MP

Project Number

657-13-300JC

Building Number

01

Drawing Number

1-2B-A-600

BID DOCUMENTS

Veterans
Health
Administration

