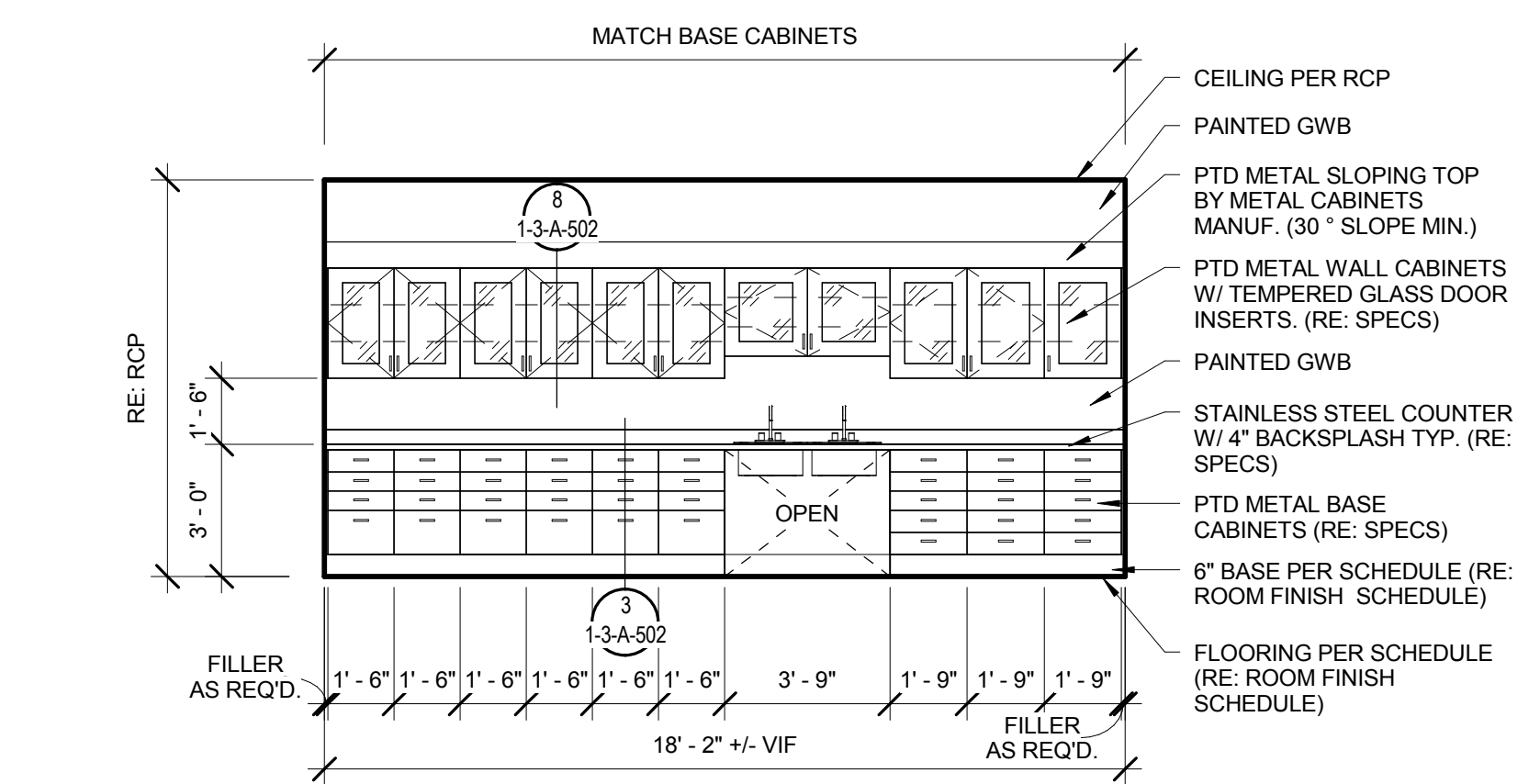
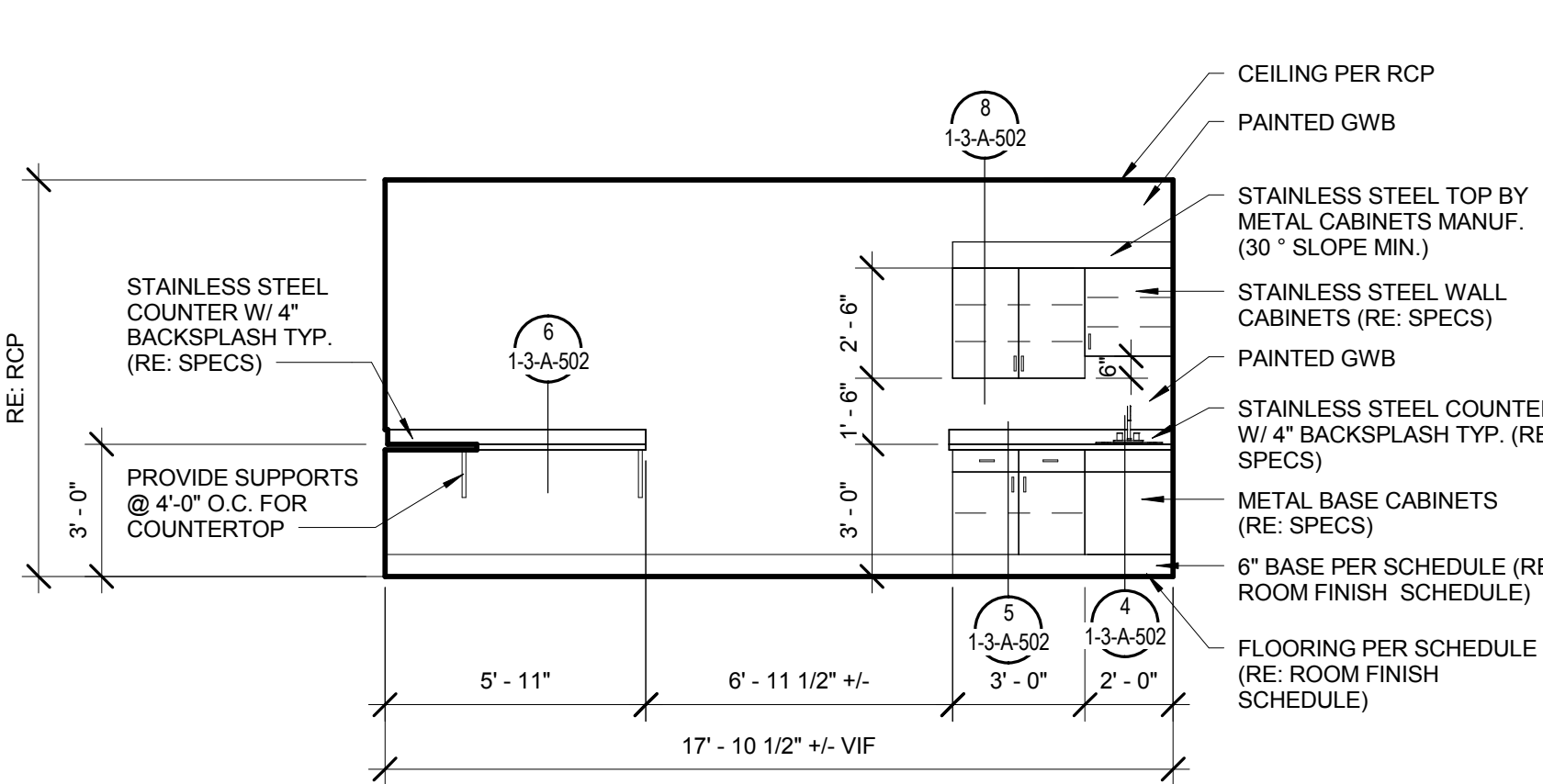


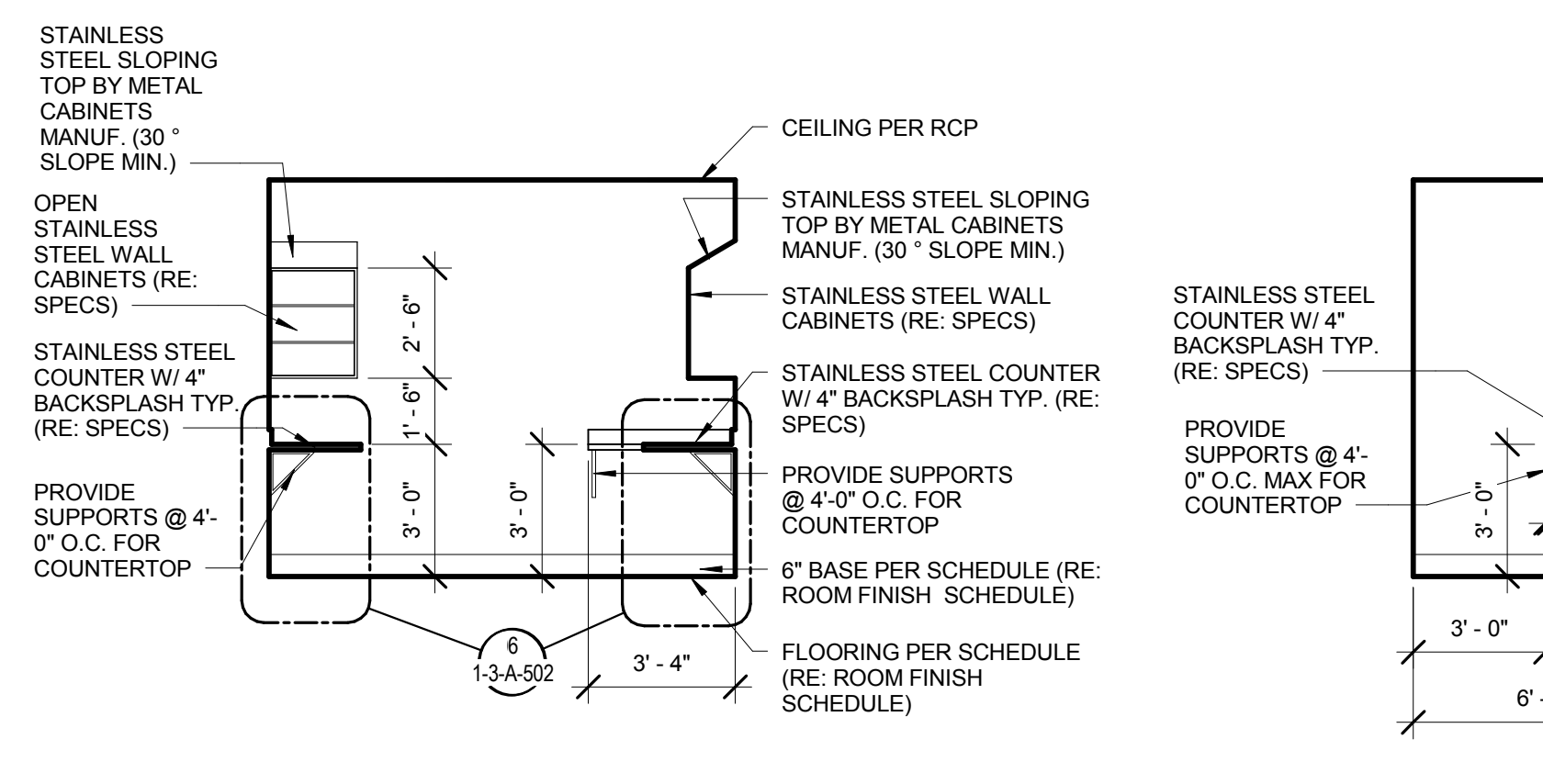
three inches = one foot
one and one half inches = one foot
one inch = one foot
three quarters inch = one foot
one half inch = one foot
one quarter inch = one foot
one eighth inch = one foot
one sixteenth inch = one foot



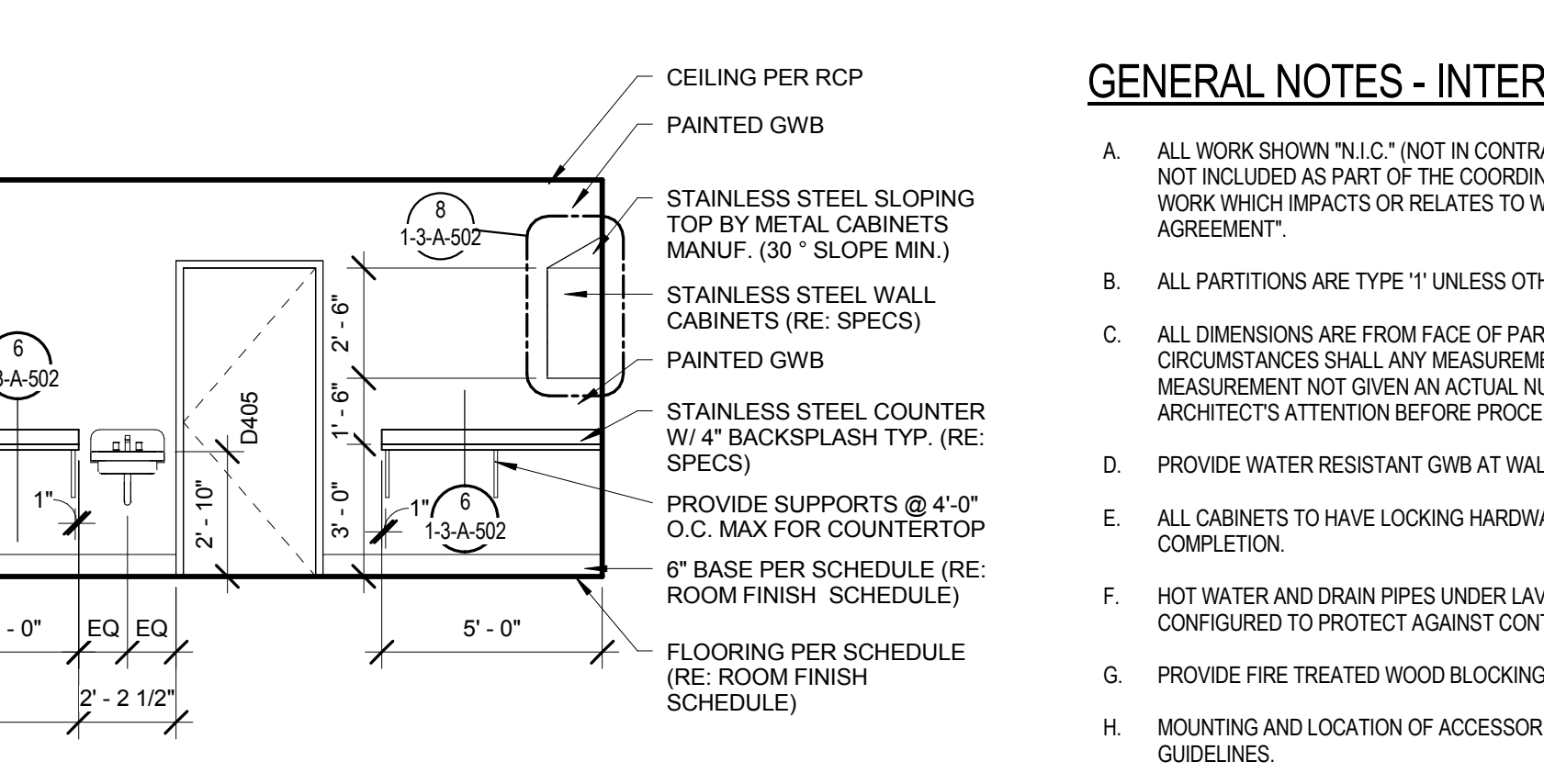
1 ELEVATION - ANESTHESIA WORK SUPPLY D406 - EAST
1/4" = 1'-0"



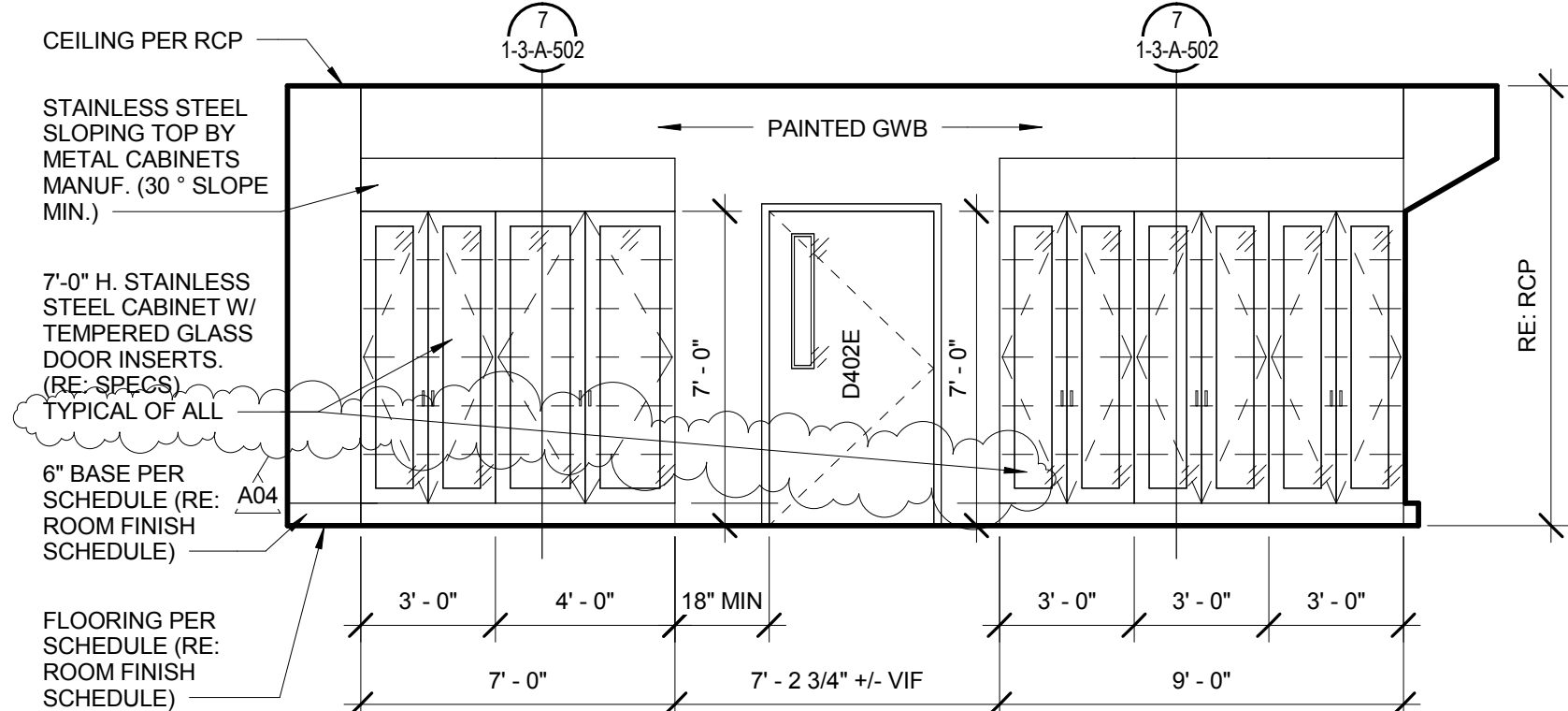
2 ELEVATION - FROZEN SECTION D405 - NORTH
1/4" = 1'-0"



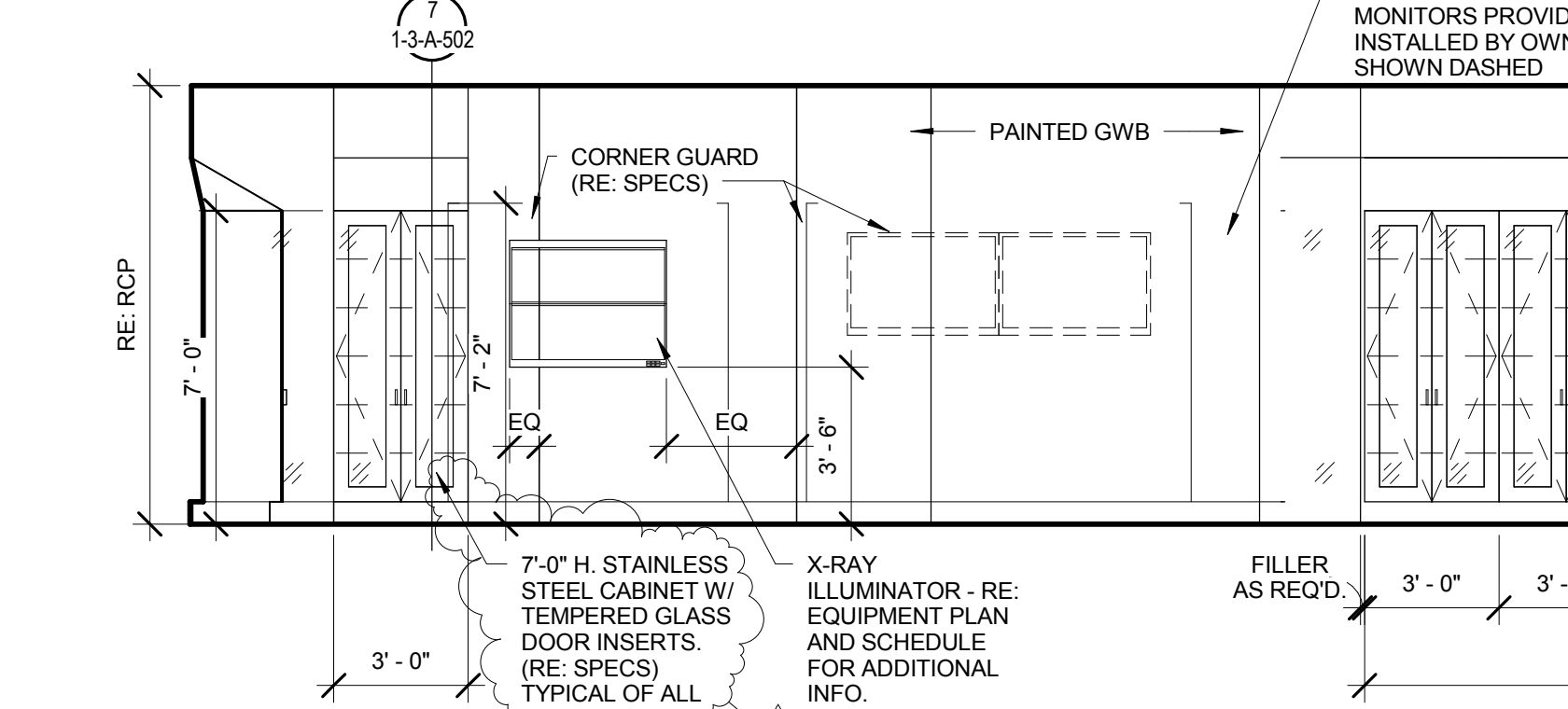
3 ELEVATION - FROZEN SECTION D405 - WEST
1/4" = 1'-0"



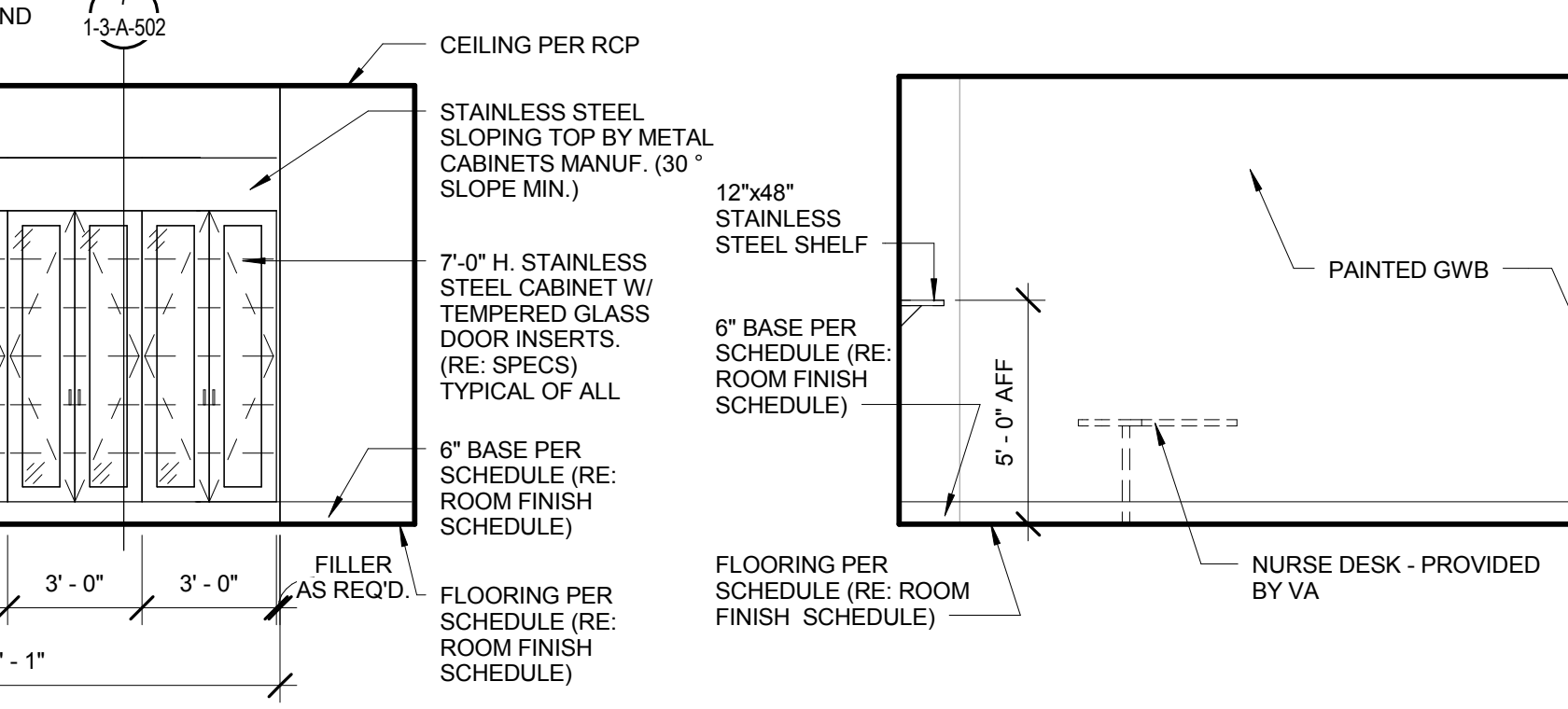
4 ELEVATION - FROZEN SECTION D405 - SOUTH
1/4" = 1'-0"



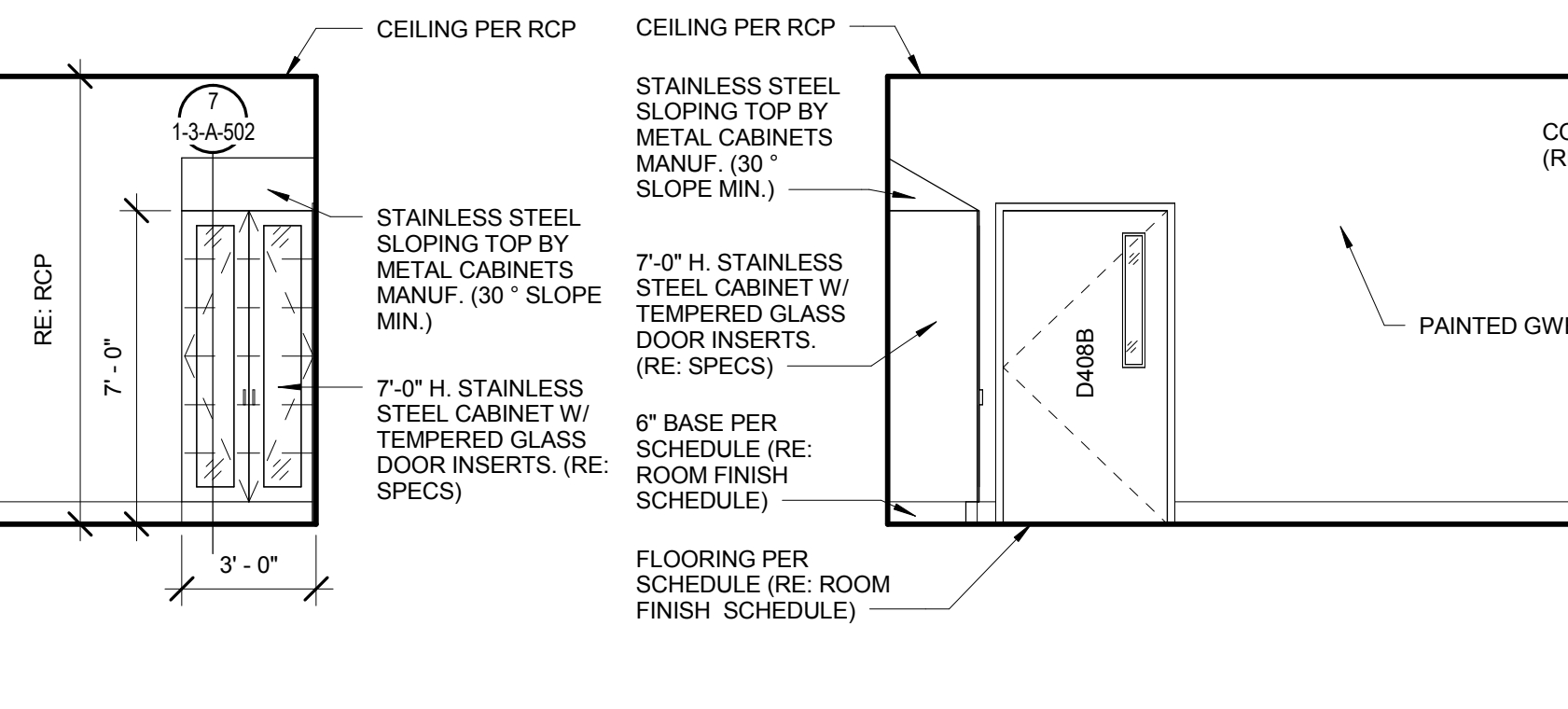
5 ELEVATION - BI-PLANE HYBRID OR #1 D402 - NORTH
1/4" = 1'-0"



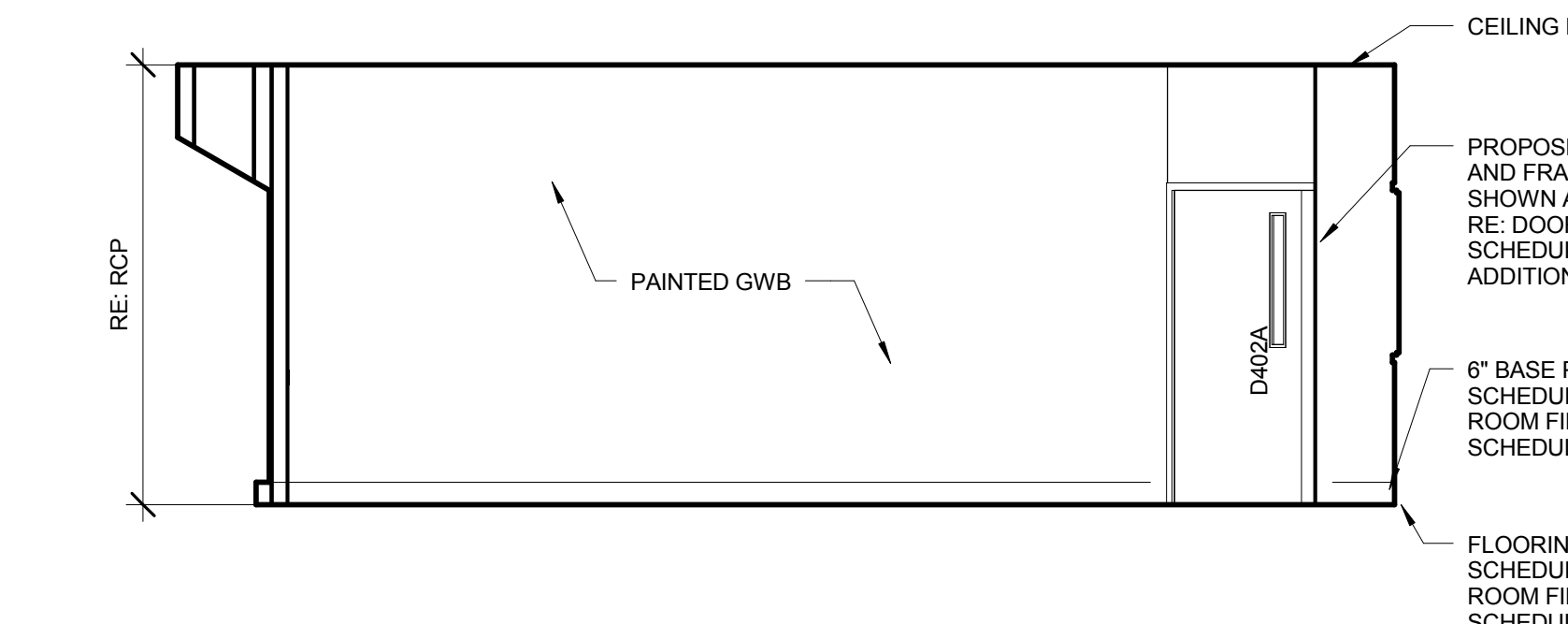
6 ELEVATION - BI-PLANE HYBRID OR #1 D402 - EAST
1/4" = 1'-0"



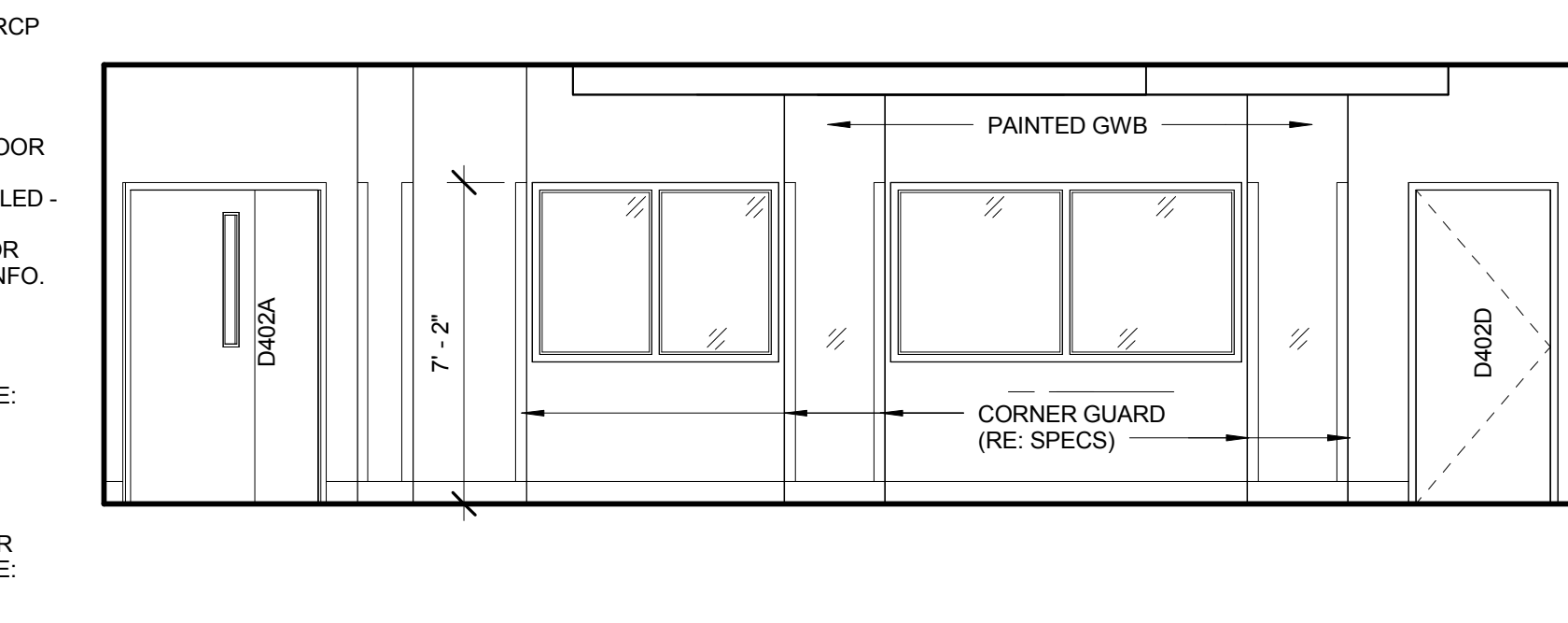
7 ELEVATION - GENERAL OR #2 D408 - NORTH
1/4" = 1'-0"



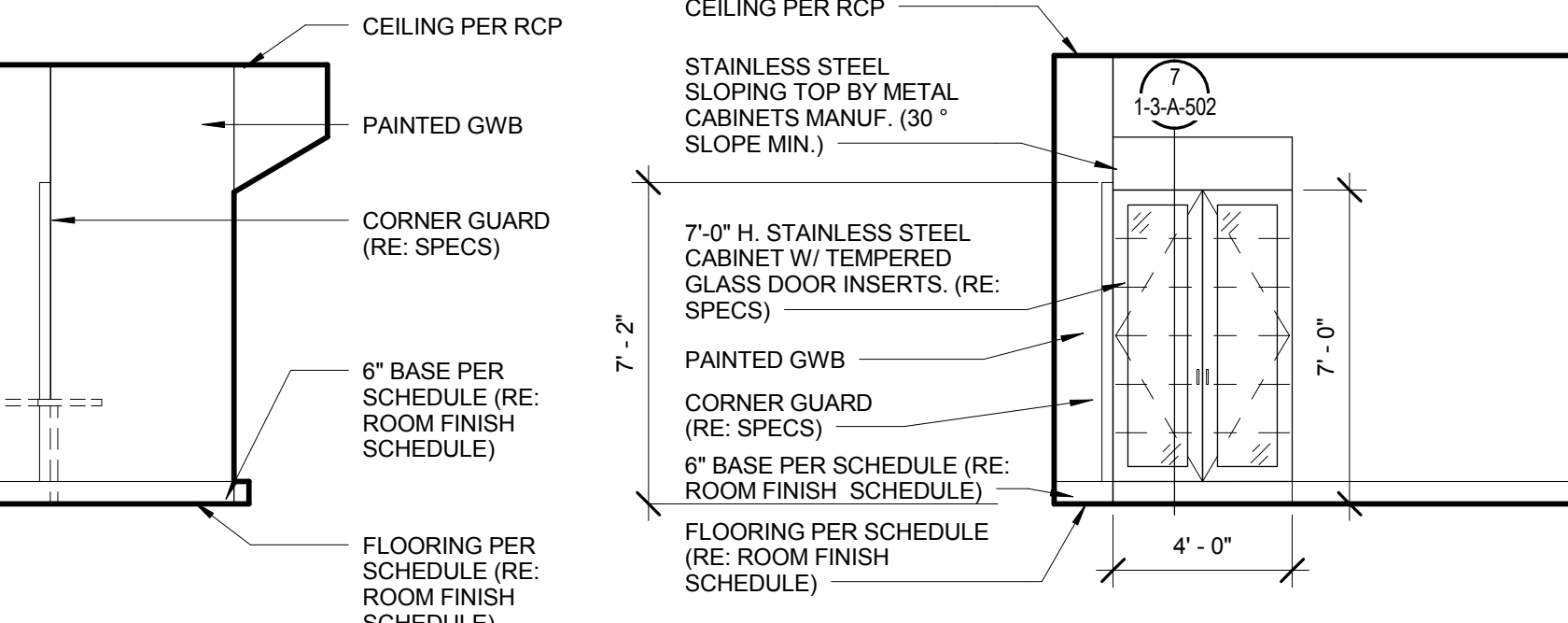
8 ELEVATION - GENERAL OR #2 D408 - EAST
1/4" = 1'-0"



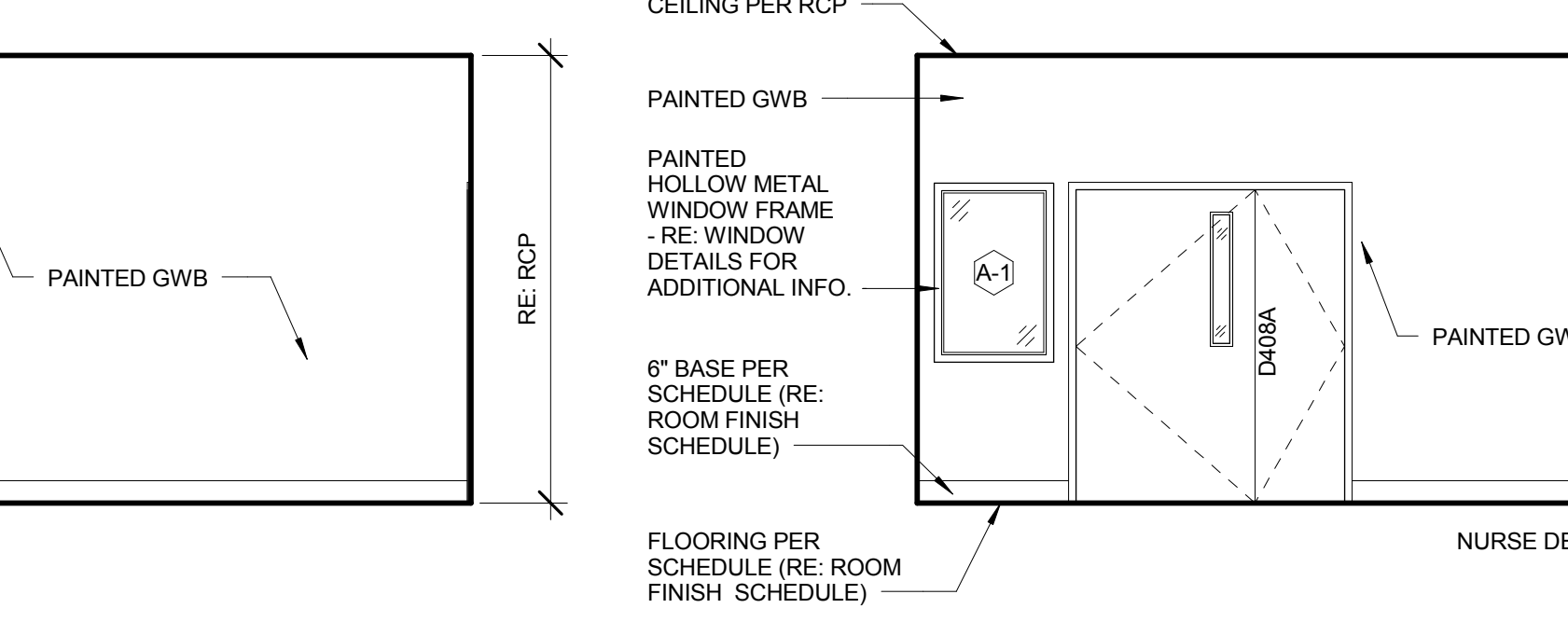
9 ELEVATION - BI-PLANE HYBRID OR #1 D402 - SOUTH
1/4" = 1'-0"



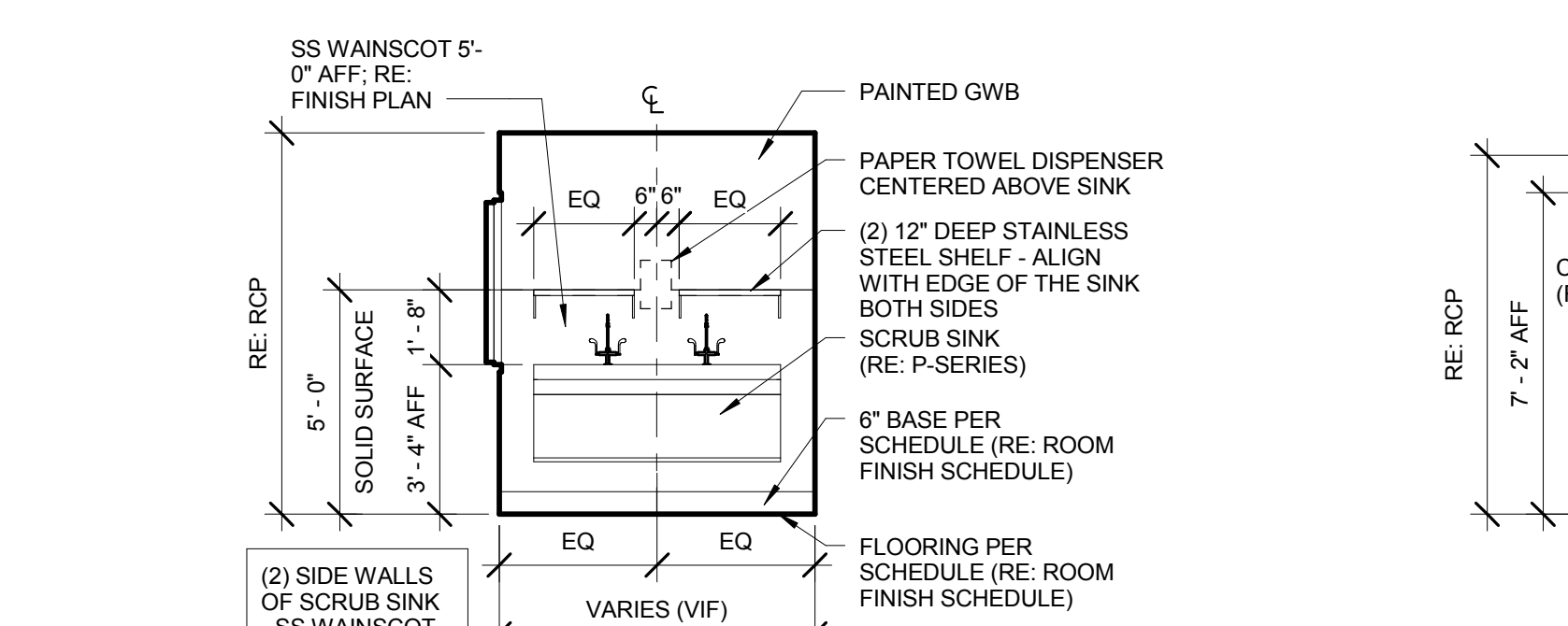
10 ELEVATION - BI-PLANE HYBRID OR #1 D402 - WEST
1/4" = 1'-0"



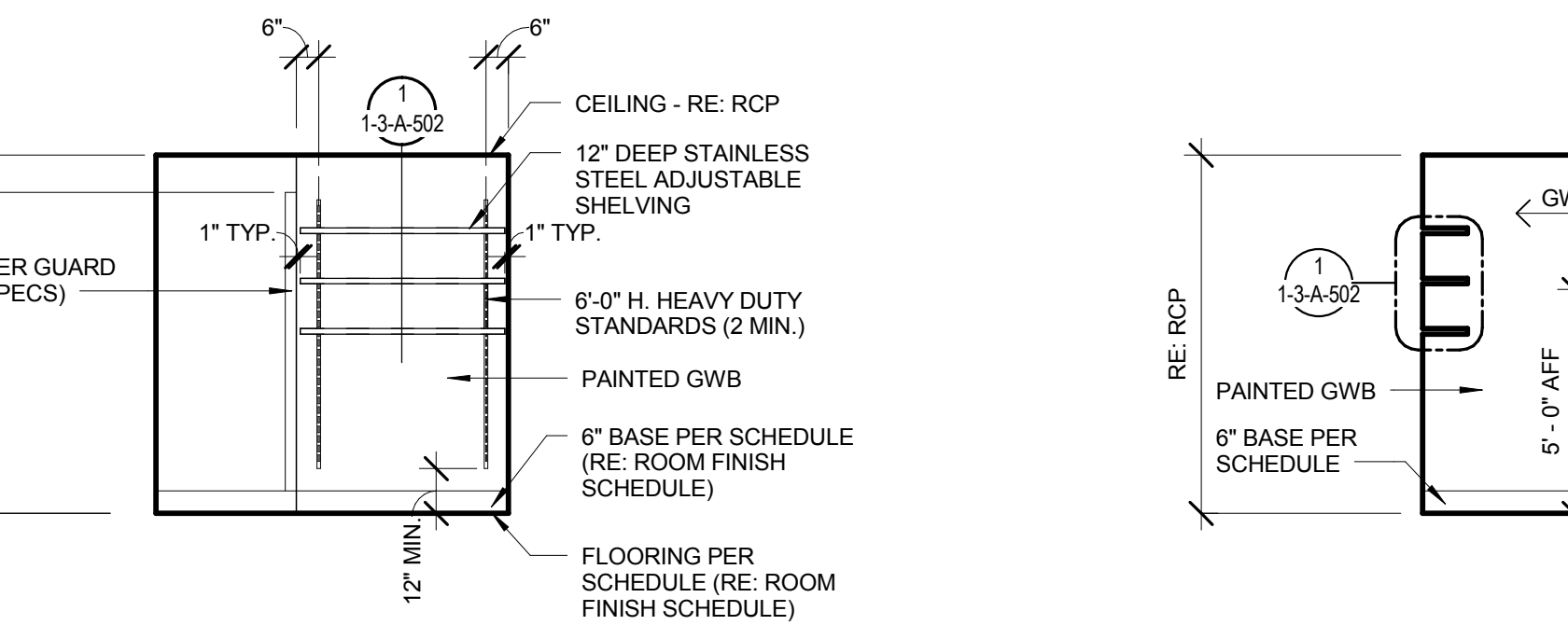
11 ELEVATION - GENERAL OR #2 D408 - SOUTH
1/4" = 1'-0"



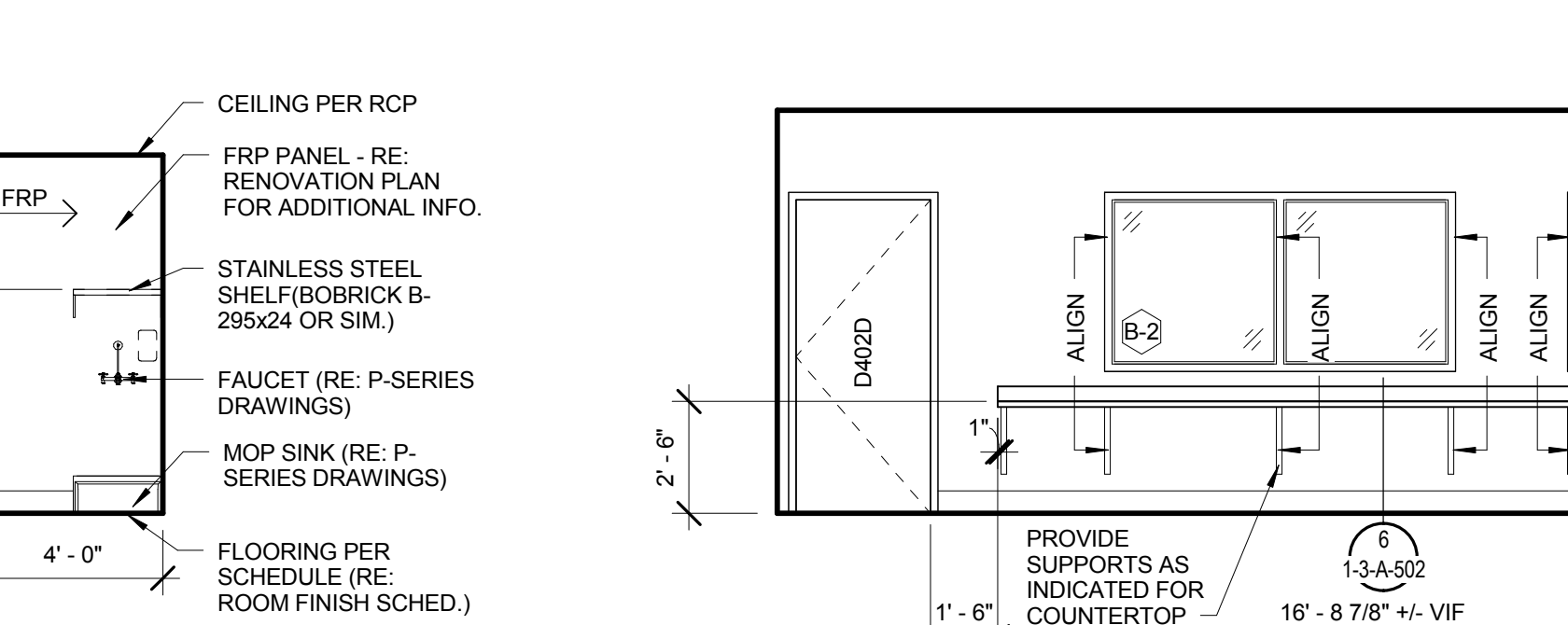
12 ELEVATION - GENERAL OR #2 D408 - WEST
1/4" = 1'-0"



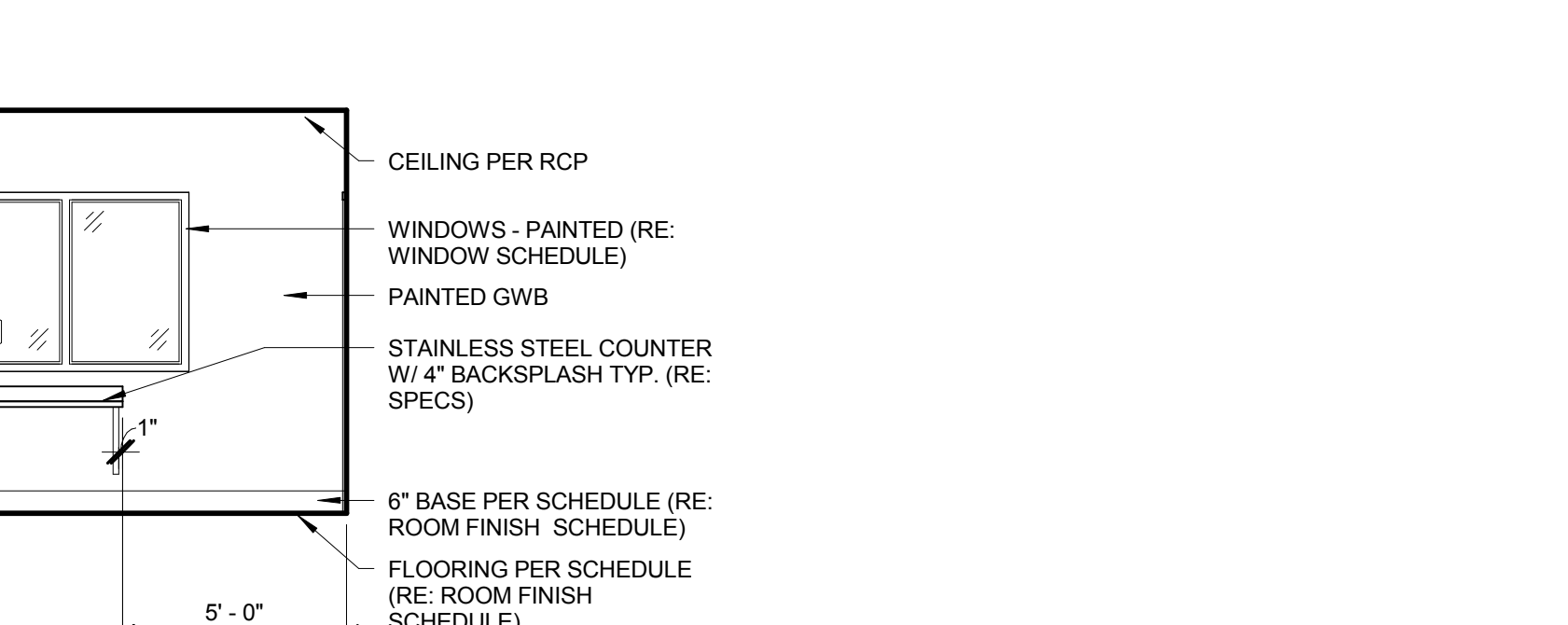
13 ELEVATION - TYPICAL SCRUB AREA - PHASE 3
1/4" = 1'-0"



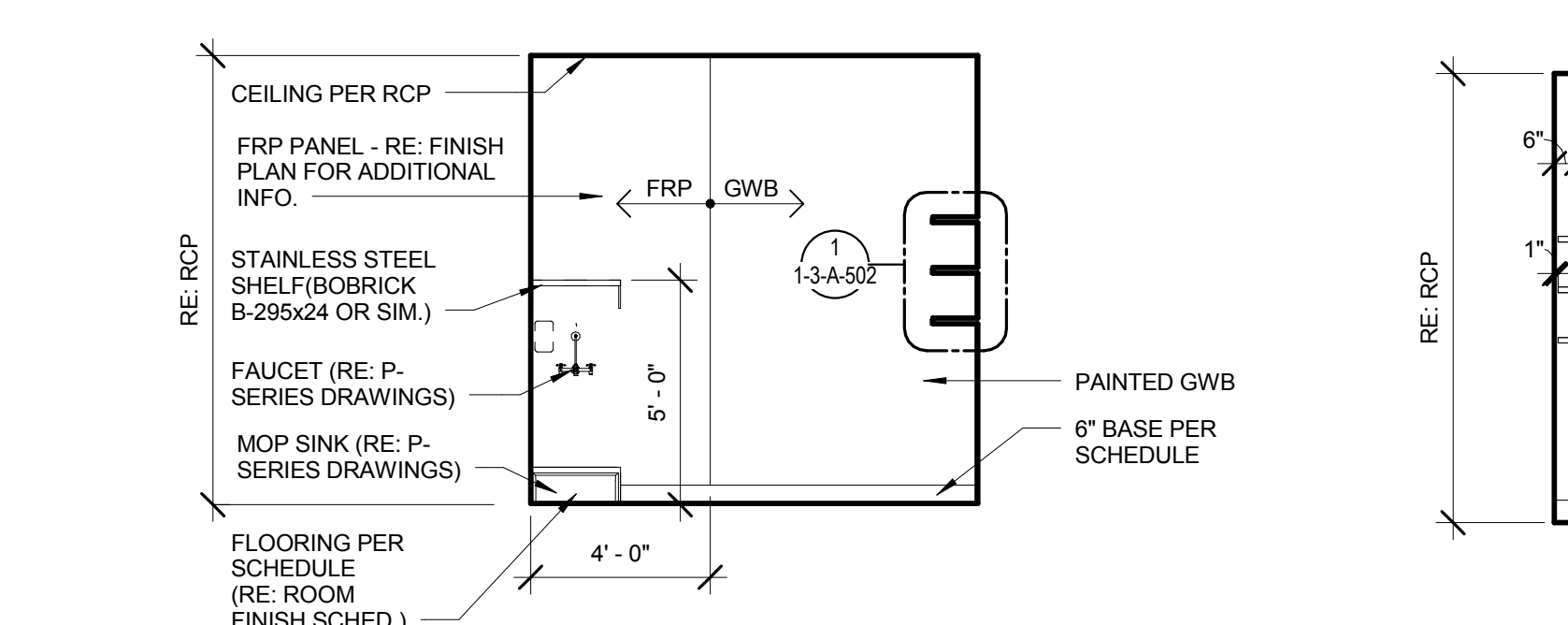
14 ELEVATION - HAC D409 - EAST
1/4" = 1'-0"



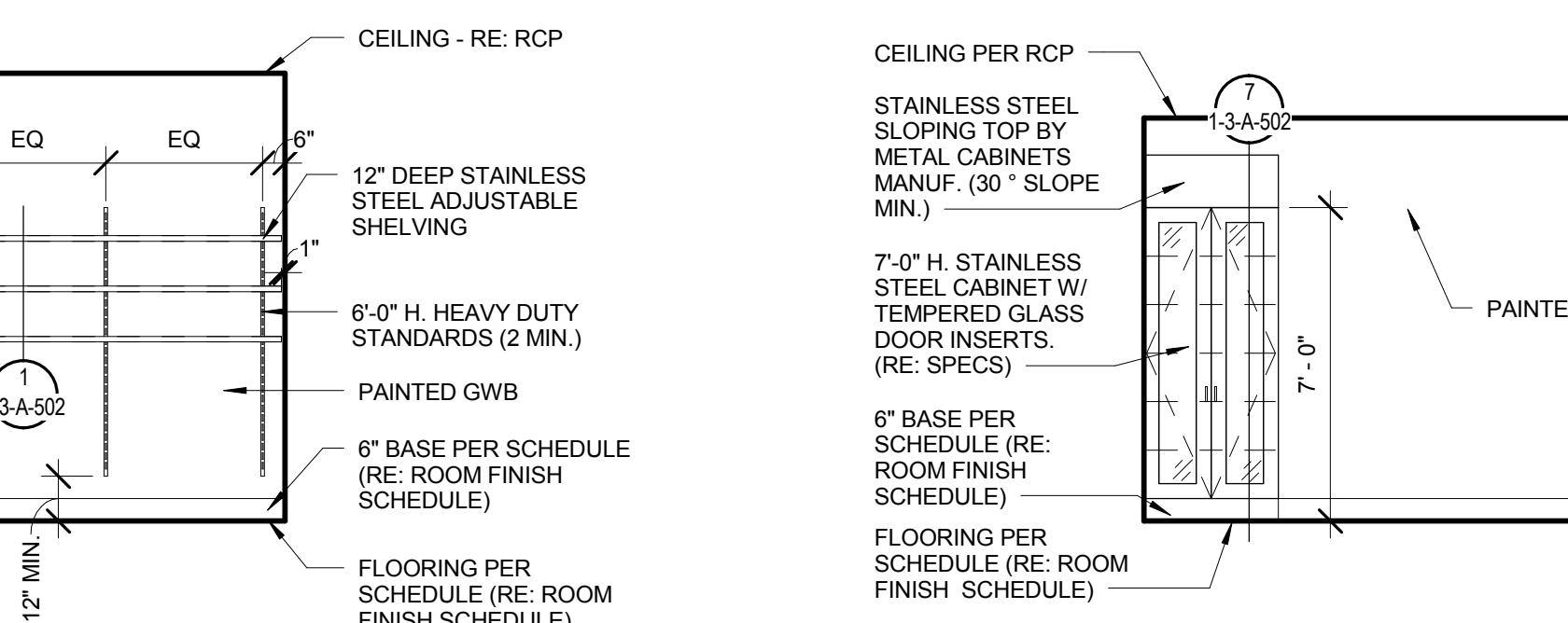
15 ELEVATION - HAC D409 - SOUTH
1/4" = 1'-0"



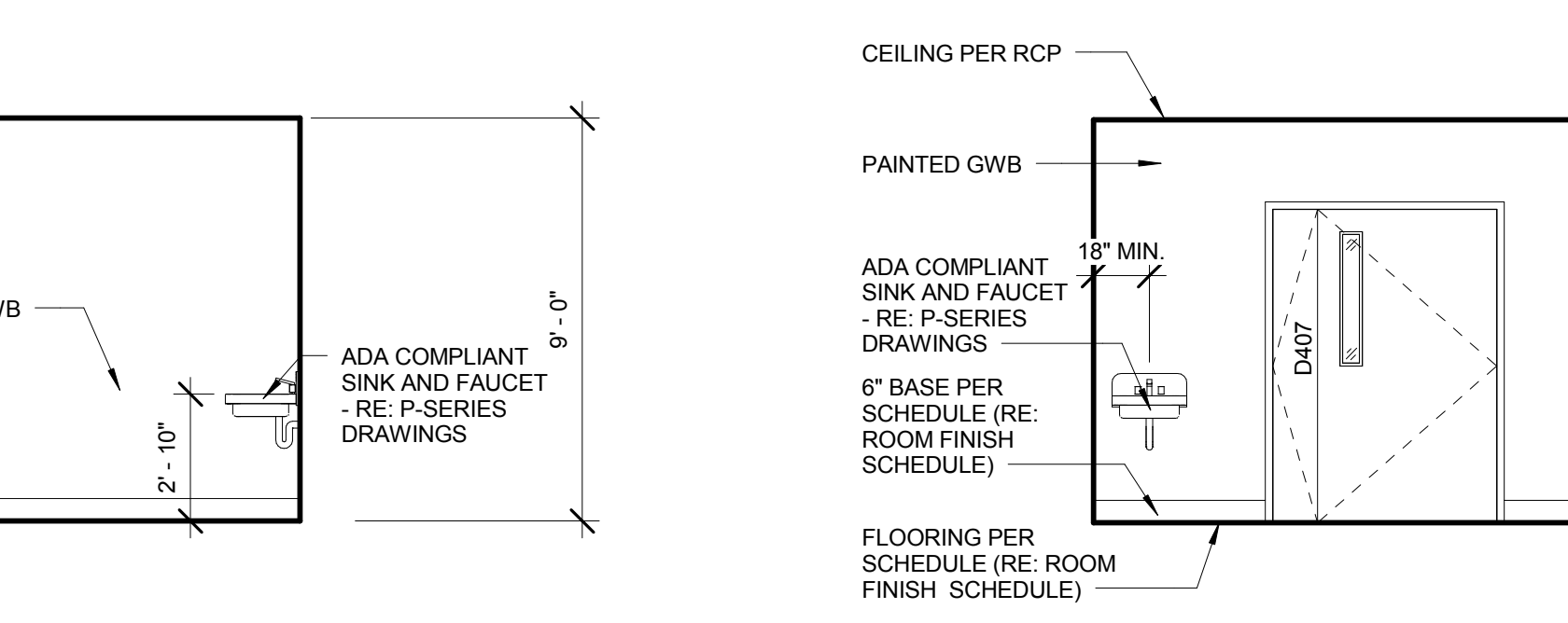
17 ELEVATION - CONTROL ROOM D402B - EAST
1/4" = 1'-0"



18 ELEVATION - CC HAC D403 - SOUTH
1/4" = 1'-0"



19 ELEVATION - CC HAC D403 - WEST
1/4" = 1'-0"



20 ELEVATION - PRE-INDUCTION D407 - EAST
1/4" = 1'-0"



21 ELEVATION - PRE-INDUCTION D407 - SOUTH
1/4" = 1'-0"

GENERAL NOTES - INTERIOR ELEVATIONS

- ALL WORK SHOWN "N.I.C." (NOT IN CONTRACT) MAY BE ACCOMPLISHED BY A CONTRACTOR WHO IS NOT INCLUDED AS PART OF THE COORDINATE WITH OTHER CONTRACTORS PERFORMING N.I.C. WORK WHICH IMPACTS OR RELATES TO WORK WHICH IS PART OF THE "CONSTRUCTION AGREEMENT".
- ALL PARTITIONS ARE TYPE "1" UNLESS OTHERWISE NOTED
- ALL DIMENSIONS ARE FROM FACE OF PARTITION TO FACE OF PARTITION U.O.N. UNDER NO CIRCUMSTANCES SHALL ANY MEASUREMENT BE SCALED FROM THE DRAWINGS. ANY MEASUREMENT NOT GIVEN AN ACTUAL NUMBER DIMENSION SHOULD BE BROUGHT TO THE ARCHITECT'S ATTENTION BEFORE PROCEEDING.
- PROVIDE WATER RESISTANT GWB AT WALLS WHERE PLUMBING FIXTURES ARE LOCATED.
- ALL CABINETS TO HAVE LOCKING HARDWARE AND KEY. FURNISH KEY TO OWNER UPON COMPLETION.
- HOT WATER AND DRAIN PIPES UNDER LAVATORIES SHALL BE INSULATED OR OTHERWISE CONFIGURED TO PROTECT AGAINST CONTACT.
- PROVIDE FIRE TREATED WOOD BLOCKING AS REQUIRED FOR INSTALLATION OF ACCESSORIES
- MOUNTING AND LOCATION OF ACCESSORIES IN ACCORDANCE WITH ADA ACCESSIBILITY GUIDELINES.
- COORDINATE SPECIFIC FIXTURE MANUFACTURER AND MODEL WITH P-SERIES DRAWINGS.

Revisions:	Date
A04 Revision A00004	06/06/16

CONSULTANTS:

ARCHITECT/ENGINEERS:

FoxArchitects

One Memorial Drive
Suite 1800
Saint Louis, MO 63102

Tel 314.621.4343
Fax 314.621.0261



SSC

Swim, Schuchat, & Cornett
Engineering, Inc.
MEP & Structural Engineer
18207 Edison Avenue
Chesterfield, MO 63005

Tel 636.530.7770
Fax 636.530.7877

Drawing Title

INTERIOR ELEVATIONS

Approved: Associate Director

Approved: Chief of Staff

Approved: Infection Control

Approved: Chief Engineer

Approved: Safety Officer

Approved: Chief, Police & Security

Project Title
**PHASE 3: Renovation of
Operating Rooms, ER & Triage**

Building Number
01

Location
**V.A.M.C. ST. LOUIS, MO
JOHN COCHRAN DIVISION**

Date
06/06/16

Checked
JB

Drawn
AO

Project Number
657-13-300JC

Drawing Number
1-3-A-200

BID DOCUMENTS

**Veterans
Health
Administration**

