

three inches = one foot

one and one half inches = one foot

one inch = one foot

three quarters inch = one foot

one half inch = one foot

three eighths inch = one foot

one quarter inch = one foot

one eighth inch = one foot

Revisions:	Date
A04 Revision A00004	06/06/16

CONSULTANTS:

ARCHITECT/ENGINEERS:

FoxArchitects

One Memorial Drive
Suite 1800
Saint Louis, MO 63102

Tel 314.621.4343
Fax 314.621.0261



SSC

Swim, Schuchat, & Cornett
Engineering, Inc.
MEP & Structural Engineer
18207 Edison Avenue
Chesterfield, MO 63005

Tel 636.530.7770
Fax 636.530.7877

Drawing Title
PARTIAL 4TH FLOOR EQUIPMENT PLAN
- PHASE 3

Approved: Associate Director

Approved: Chief of Staff

Approved: Infection Control

Approved: Chief Engineer

Approved: Safety Officer

Approved: Chief, Police & Security

Project Title
PHASE 3: Renovation of
Operating Rooms, ER & Triage

Location

V.A.M.C. ST. LOUIS, MO
JOHN COCHRAN DIVISION

Date

06/06/16

Checked

JB

Drawn

AB

Project Number

657-13-300JC

Building Number

01

Drawing Number

1-3-A-601

Veterans
Health
Administration



Department of
Veterans Affairs

BI-PLANE HYBRID OR #1 D402 EQUIPMENT SCHEDULE - PHASE 3						
#	EQUIPMENT NAME	SIZE (W x D x H)	SERVICES			COMMENTS
			WAT ER	NP	EP	VV / VC / CC
A1	Bi-Plane Unit - Jaquet Table	See MFR	--	--	--	VV --
A2	Bi-Plane Unit - Floor Clea	See MFR	--	--	--	VV --
A3	Bi-Plane Unit - Lerc N Neuro	See MFR	--	--	--	VV --
A4	Bi-Plane Unit - Mavig Ceiling Track w/ Radiation Shield	See MFR	--	--	--	VV --
A5	Bi-Plane Unit - 55" LCD monitor Suspension	See MFR	--	--	--	VV --
A6	Bi-Plane Unit - Xper Pedestal	See MFR	--	--	--	VV --
A7	Documentation Box - on casters	See MFR	--	--	--	VV 1
A8	Bi-Plane Unit - Exam Room Auxiliary Box	See MFR	--	--	--	VV --
A9	Bi-Plane Unit - Viewing/Control	See MFR	--	--	--	VV --
A10	Bi-Plane Unit - Interventional Hardware	See MFR	--	--	--	VV --
A11	Bi-Plane Unit - Majns 40E Cabinet	See MFR	--	--	--	VV --
A12	Bi-Plane Unit - Ceteray IX Generator Cabinet	See MFR	--	--	--	VV --
A13	Bi-Plane Unit - Ceteray ix Generator Cabinet	See MFR	--	--	--	VV --
A14	Bi-Plane Unit - Peripheral 40E Cabinet	See MFR	--	--	--	VV --
A15	Bi-Plane Unit - Image 40E Cabinet	See MFR	--	--	--	VV --
A16	Bi-Plane Unit - Stationary Transformer Unit	See MFR	--	--	--	VV --
A17	Bi-Plane Unit - Video Connection Box	See MFR	--	--	--	VV --
A18	Bi-Plane Unit - Video Connection Box	See MFR	--	--	--	VV --
A19	Video Connection Box	See MFR	--	--	--	VV 1
A20	Video Connection Box	See MFR	--	--	--	VV 1
A21	Video Connection Box	See MFR	--	--	--	VV 1
A22	Video Connection Box	See MFR	--	--	--	VV 1
A23	Video Connection Box	See MFR	--	--	--	VV 1
A24	Video Connection Box	See MFR	--	--	--	VV 1

DEFINITIONS
VV VA PROVIDED AND VA INSTALLED.
VC VA PROVIDED AND CONTRACTOR INSTALLED.
CC CONTRACTOR PROVIDED AND CONTRACTOR INSTALLED.

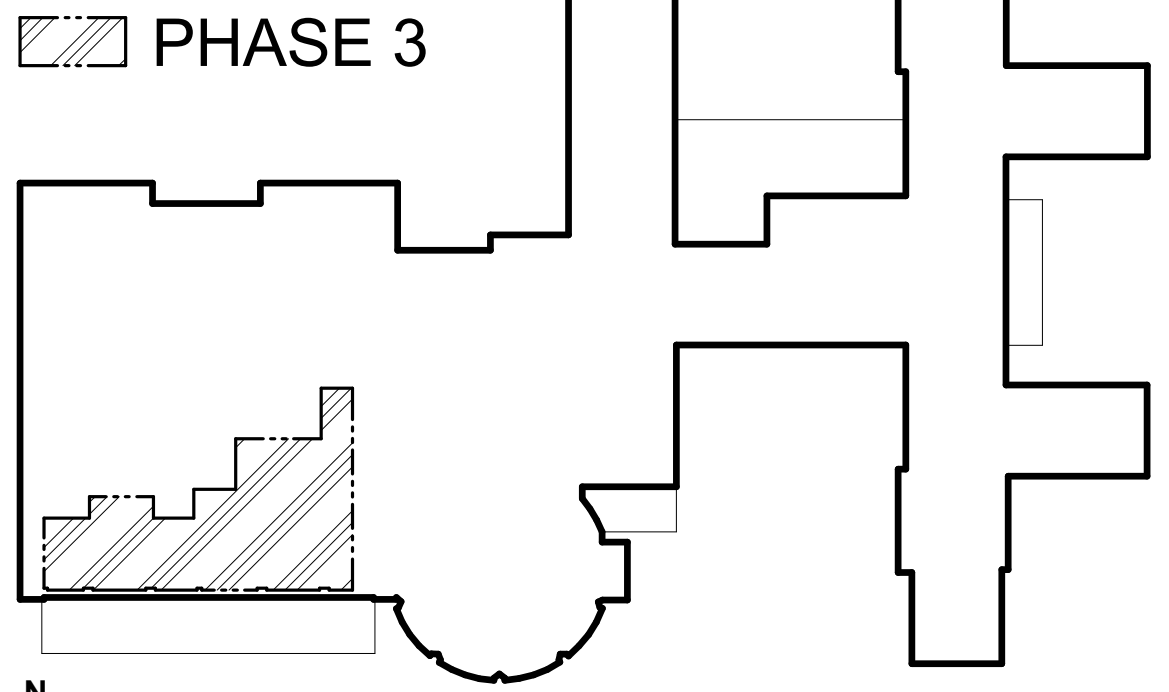
COMMENTS -- BI-PLANE HYBRID OR #1 D402 EQUIPMENT SCHEDULE

- ITEM NOT LOCATED ON PLAN; EXACT LOCATION TO BE COORDINATED BY OWNER AND MANUFACTURER UPON INSTALLATION OF EQUIPMENT

EQUIPMENT SCHEDULE - PHASE 3						
#	EQUIPMENT NAME	SIZE (W x D x H)	SERVICES			COMMENTS
			WAT ER	NP	EP	VV / VC / CC
4	Pyxis	#4 (Supply) 54" x 28" x 78"				VV
5A	Pyxis	#5A (Medication - Future) 54" x 28" x 58"				VV
37	Linen Cabinet	#37 Linen Cabinet - 48" x 25" x 72"				VV
55	OR Table	#55 - 84" x 24"				VV
57	EE 90323 Bovie	#57 - 20" x 24"				VV
68	C-Arm	#68 - 82" x 34"				VV
72	C-Arm Console	#72 - 39" x 28"				VV
90	Section Machine	#90 - 34" x 35" x 48"				VV
91	Refrigerator	#91 - 24" x 26" x 36"				VV
97	Stocking Cart	#97 - 48" x 30"				VV
98	Difficult Airway Cart	#98 - 32" x 22"				VV
99	Difficult Airway Cart	#99 - 32" x 22"				VV
100	Gldoscope	#100 - 24" diameter				VV
101	Bronc Cart	#101 (CABINET) - 37" x 19"				VV
102	Tank Cart	#102 - 26" x 20"				VV
103	Hypothermia Cart	#103 - 30" x 24"				VV
104	Transport Monitors	#104 - 24" diameter				VV
105	IV stand	#105 - 24" diameter				VV
106	EV 1000	#106 - 24" diameter				VV
115	Lead Apron Rack	#115 - 24" diameter				VV
116	Pumps	#116 - 24" diameter				VV
117	Gas Machine	#117 - 57" x 37"				VV
121	Bronc Cart	#121 (CABINET) - 37" x 19"				VV
122	Cart	#122 - 25" x 38"				VV
123	Cart	#123 - 22" x 18"				VV
129	Ultrasound	#129 - 27" x 24"				VV
130	Laptop Cart	#130 - 24" x 24"				VV
134	Anesthesia Equipment	#134 (Gas Machine) - 84" x 42"				VV
135	Anesthesia Equipment	#135 (Cart) - 52" x 28"				VV
141	Trash Cart	#141 - 24" x 18"				VV
150	Grossing	#150 - 60" x 30" x 72"				VV
151	Stretcher	#151 - 24" x 78"				VV
170	Medical Table	#170 - Long Back Table - 48" x 24"				VV
171	Medical Table	#171 - Short Back Table - 36" x 24"				VV
172	Medical Table	#172 - Ring Stand - 18" x 34"				VV
183	SS Cart	#183 - 20" x 36"				VV
184	Floor Buffer	#184 - 20" x 27" x 48"				VV
185	Floor Buffer	#185 (Scrubber) - 22" x 39" x 33"				VV
186	Trash Can	#186 - 26" diameter				VV
186A	Trash Can	#186A - 20" diameter				VV
187	House Keeping Cart	#187 - 21" x 38" x 48"				VV
187A	House Keeping Cart	#187A - 36" x 24" x 48"				VV
187B	House Keeping Cart	#187B - 36" x 20" x 48"				VV
188	Mop Buckets	#188 - 19" x 29" x 39"				VV
189	Sterilizer Steam	#189 - 24" x 24"				VV
190	Monitor	#190 - 72" Wide				VV
193	Monitor Stand	#193 - 24" diameter				VV
197	X Ray Illuminators	#197 - 42" x 34"				CC
199	Medical Booms	#199				VV
200	Nurse Desk and Chair	#200				VV

DEFINITIONS
VV VA PROVIDED AND VA INSTALLED.
VC VA PROVIDED AND CONTRACTOR INSTALLED.
CC CONTRACTOR PROVIDED AND CONTRACTOR INSTALLED.

- NOTES:
- PROVIDE BLOCKING WITHIN WALL FOR SUPPORT
 - FOR MOUNTING HEIGHT - VERIFY WITH C.O.R.
 - ONE UNIT PER SICU BAY



KEY PLAN - PHASE 3

BID DOCUMENTS