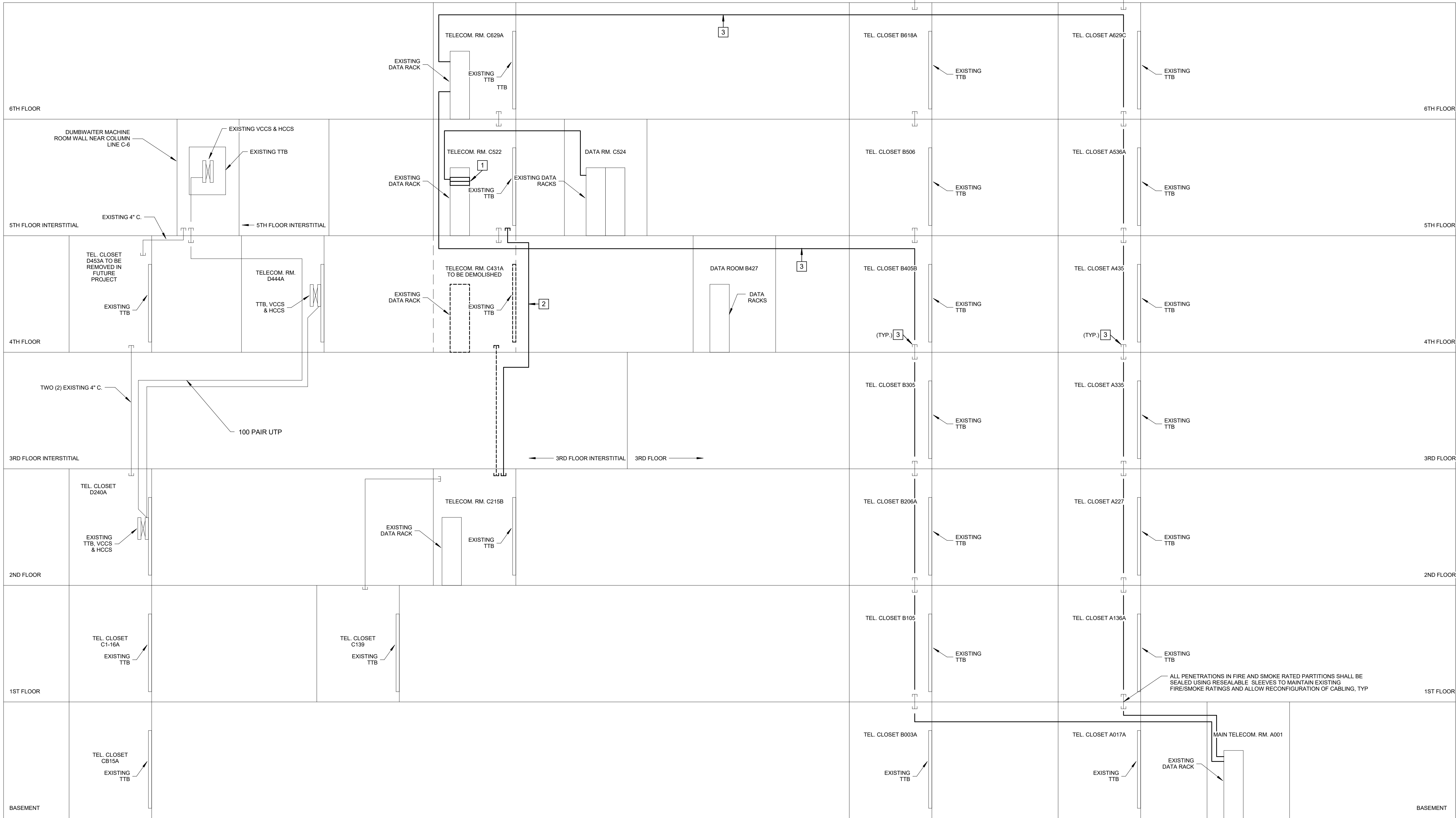


one eighth inch = one foot
one quarter inch = one foot
one half inch = one foot
three eighths inch = one foot
one inch = one foot
one and one half inches = one foot
two inches = one foot
three inches = one foot
four inches = one foot
five inches = one foot
six inches = one foot
seven inches = one foot
eight inches = one foot
nine inches = one foot
ten inches = one foot
eleven inches = one foot
twelve inches = one foot
thirteen inches = one foot
fourteen inches = one foot
fifteen inches = one foot
sixteen inches = one foot
seventeen inches = one foot
eighteen inches = one foot
nineteen inches = one foot
twenty inches = one foot
twenty one inches = one foot
twenty two inches = one foot
twenty three inches = one foot
twenty four inches = one foot
twenty five inches = one foot
twenty six inches = one foot
twenty seven inches = one foot
twenty eight inches = one foot
twenty nine inches = one foot
thirty inches = one foot
thirty one inches = one foot
thirty two inches = one foot
thirty three inches = one foot
thirty four inches = one foot
thirty five inches = one foot
thirty six inches = one foot
thirty seven inches = one foot
thirty eight inches = one foot
thirty nine inches = one foot
forty inches = one foot
forty one inches = one foot
forty two inches = one foot
forty three inches = one foot
forty four inches = one foot
forty five inches = one foot
forty six inches = one foot
forty seven inches = one foot
forty eight inches = one foot
forty nine inches = one foot
fifty inches = one foot
fifty one inches = one foot
fifty two inches = one foot
fifty three inches = one foot
fifty four inches = one foot
fifty five inches = one foot
fifty six inches = one foot
fifty seven inches = one foot
fifty eight inches = one foot
fifty nine inches = one foot
sixty inches = one foot
sixty one inches = one foot
sixty two inches = one foot
sixty three inches = one foot
sixty four inches = one foot
sixty five inches = one foot
sixty six inches = one foot
sixty seven inches = one foot
sixty eight inches = one foot
sixty nine inches = one foot
seventy inches = one foot
seventy one inches = one foot
seventy two inches = one foot
seventy three inches = one foot
seventy four inches = one foot
seventy five inches = one foot
seventy six inches = one foot
seventy seven inches = one foot
seventy eight inches = one foot
seventy nine inches = one foot
eighty inches = one foot
eighty one inches = one foot
eighty two inches = one foot
eighty three inches = one foot
eighty four inches = one foot
eighty five inches = one foot
eighty six inches = one foot
eighty seven inches = one foot
eighty eight inches = one foot
eighty nine inches = one foot
ninety inches = one foot
ninety one inches = one foot
ninety two inches = one foot
ninety three inches = one foot
ninety four inches = one foot
ninety five inches = one foot
ninety six inches = one foot
ninety seven inches = one foot
ninety eight inches = one foot
ninety nine inches = one foot
one hundred inches = one foot



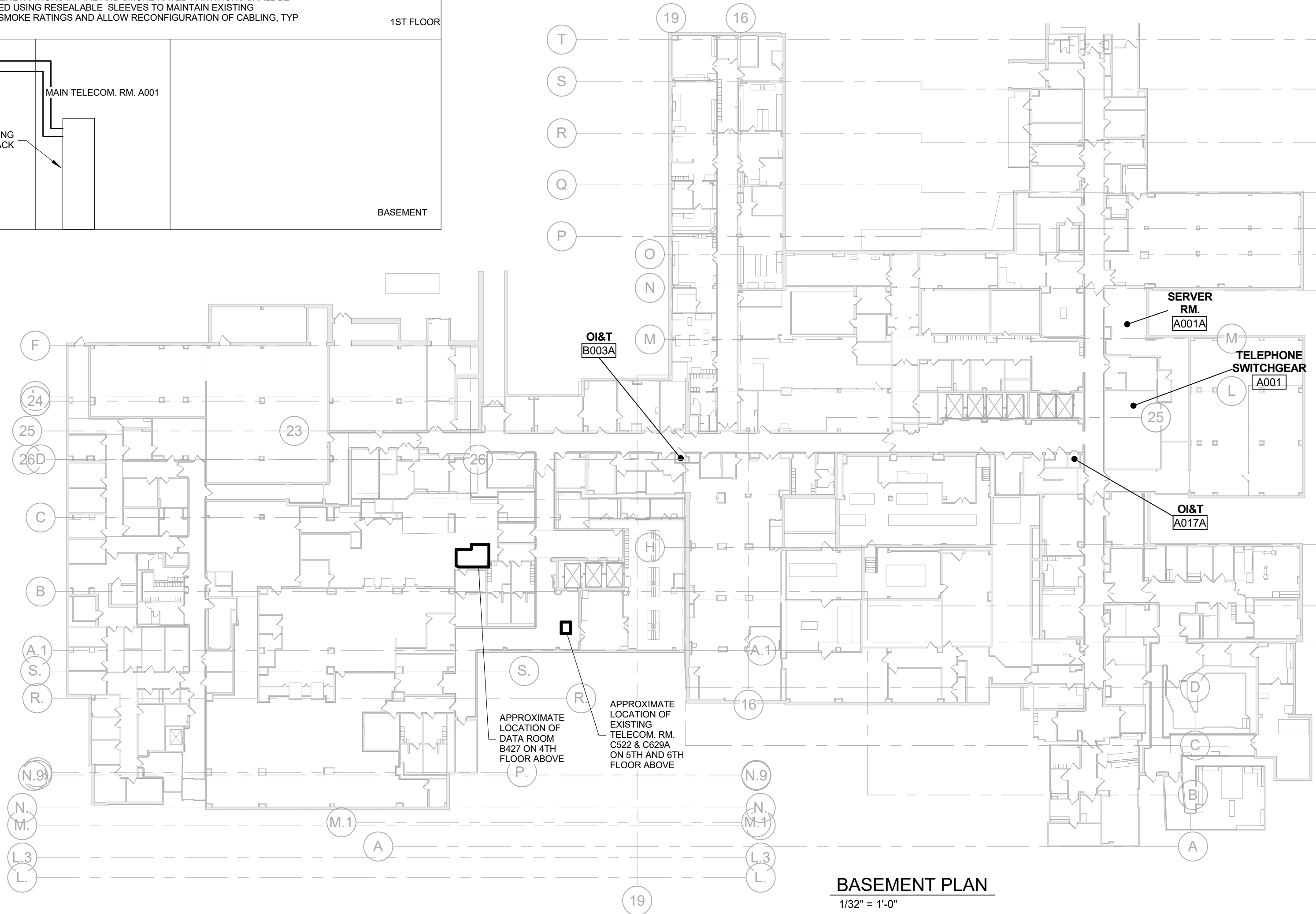
TELECOMMUNICATIONS RISER DIAGRAM

ELECTRICAL GENERAL NOTES:

- SEE SHEET 1-2B-E-601 FOR ELECTRICAL GENERAL NOTES, SYMBOLS AND ABBREVIATIONS. THE PROJECT LIMIT LINE SHOWN ON THE DRAWINGS INDICATES THE AREA OF SUBSTANTIAL ARCHITECTURAL RENOVATION AND IS NOT INCLUSIVE OF ALL AREAS WHERE WORK WILL BE REQUIRED TO BE PERFORMED BY OTHER TRADES. THE CONTRACTOR IS RESPONSIBLE FOR ROUTING UTILITIES THROUGH AREAS OUTSIDE THE PROJECT LIMIT LINE WHICH ARE REQUIRED FOR THE SYSTEMS SHOWN ON THE DRAWINGS. COORDINATE WITH THE COR.
- REFER TO THE "1A" SERIES DRAWINGS FOR AREAS WHERE LEAD AND HAZARDOUS MATERIAL ABATEMENT WILL OCCUR. COORDINATE WITH THE INDUSTRIAL HYGIENIST FOR PHASING OF WORK. WORK IN CORRIDORS SHALL BE PERFORMED AFTER NORMAL WORKING HOURS.

Keynote Legend

- PROVIDE TWO (2) NEW 48-PORT PATCH PANELS IN EXISTING DATA RACK EQUAL TO LEVITON #40256-A15. PROVIDE EIGHT (8) TRUNK CABLES FROM NEW PATCH PANELS TO EXISTING DATA RACK IN RM. C524 AS MANUFACTURED BY LEVITON AS FOLLOWS: (A) CT-UP12L066F-JVAXON-PND0Y-SB03 AND (4) CT-UP12L066F-JVAXON-PN30Y-SB03. PROVIDE (48) 5' GREEN CAT 6 PATCH CORDS EQUAL TO LEVITON #60566-050. COORDINATE WITH COR FOR EXACT INSTALLATION REQUIREMENTS.
- PROVIDE NEW 4" CONDUIT WITH INSULATED BUSHINGS STUBBED INTO TELECOMM RMs. PROVIDE 505PAIR CAT3 UNSHIELDED TWISTED PAIR (UTP) RISER RATED CABLE. MINIMUM 24 AWG SOLID. THERMOPLASTIC INSULATED CONDUCTORS ENCLOSED IN A THERMOPLASTIC OUTER JACKET. CONNECT RISER CABLE TO NEW PUNCH-DOWN BLOCKS IN EACH TTB. COORDINATE WITH THE COR AND VA OIA/T FOR ALL TERMINATION, LABELING, ROUTING AND WIRE MANAGEMENT REQUIREMENTS. CORE-DRILL AND PRESTOP ALL NEW PENETRATIONS.
- PROVIDE NEW ARMORED FIBER OPTIC TRUNK LINES FROM EXISTING DATA RACK IN RM. C628A TO EXISTING DATA RACK IN MAIN TELECOM RM. A001. ROUTE CABLE HORIZONTALLY IN NEW J-HOOKS ABOVE CORRIDOR CEILINGS AND VERTICALLY THROUGH EXISTING STACKED TELEPHONE CLOSETS VIA EXISTING CONDUIT SLEEVES IN DOOR AS INDICATED. FIRE-STOP ALL NEW PENETRATIONS AND EXISTING SLEEVES AFTER NEW CABLES ARE INSTALLED. EACH TRUNK CABLE SHALL BE EQUAL TO BENTON ARMO-TEK POPY SERIES AND SHALL INCLUDE THE FOLLOWING: 24-STRAND OM3 50/125, 12-STRAND OM1 MM 62.5/125 AND 12-STRAND OS2 3M. COORDINATE WITH THE COR FOR EXACT REQUIREMENTS.



BASEMENT PLAN
1/32" = 1'-0"

BID DOCUMENTS

Revisions:	Date
AMENDMENT A00004	06/06/16

CONSULTANTS:

ARCHITECT/ENGINEERS:

FoxArchitects

One Memorial Drive
Suite 1800
Saint Louis, MO 63102

Tel 314.621.4343
Fax 314.621.0261



SSC

Swim, Schuchat, & Cornett
Engineering, Inc.
10201 Clinton Avenue
Chesterfield, Missouri 63005
Phone 636.350.7770 Fax 636.530.7877
Missouri Certificate of Authority #NC 001244

Drawing Title
ELECTRICAL TEL/DATA RISER DIAGRAMS

Approved: Associate Director

Approved: Chief of Staff

Approved: Infection Control

Approved: Chief Engineer

Approved: Safety Officer

Approved: Chief, Police & Security

Project Title
PHASE 2B: Renovation of
Operating Rooms, ER and Triage

Location
V.A.M.C. ST. LOUIS, MO
JOHN COCHRAN DIVISION

Date
02/24/16

Checked
MRJ

Drawn
JMS

Project Number
657-13-300JC

Building Number
01

Drawing Number
1-2B-E-603

Veterans
Health
Administration

