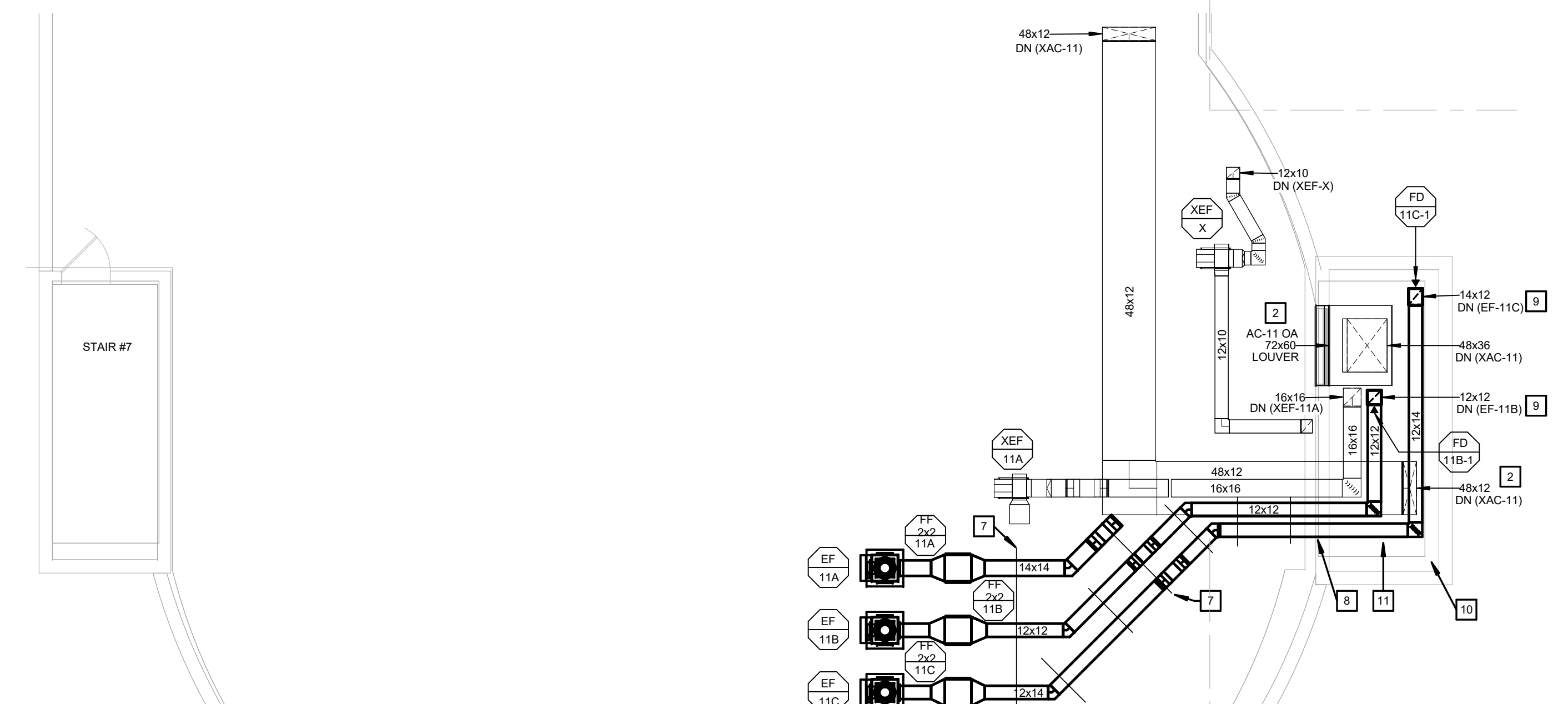
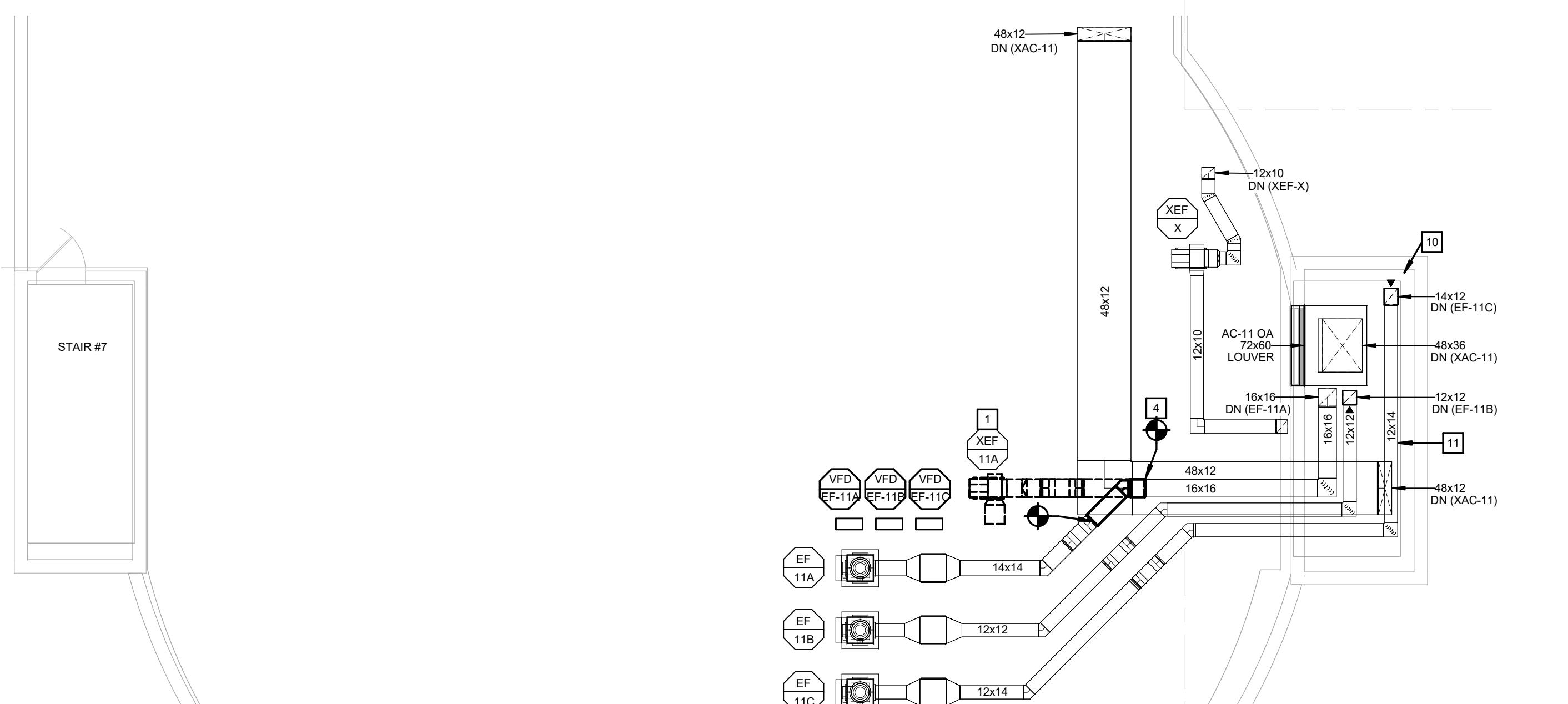


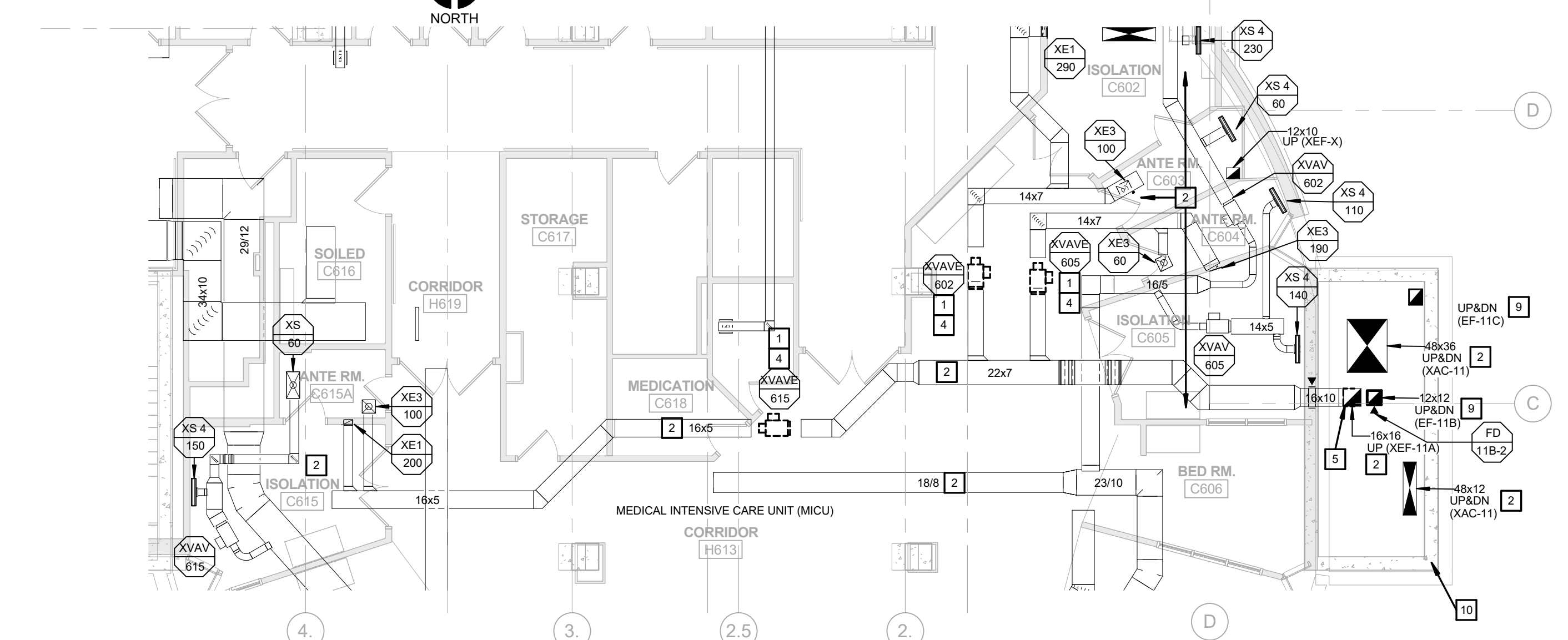
three inches = one foot
one and one half inches = one foot
one inch = one foot
three quarters inch = one foot
one half inch = one foot
three eighths inch = one foot
one quarter inch = one foot
one eighth inch = one foot



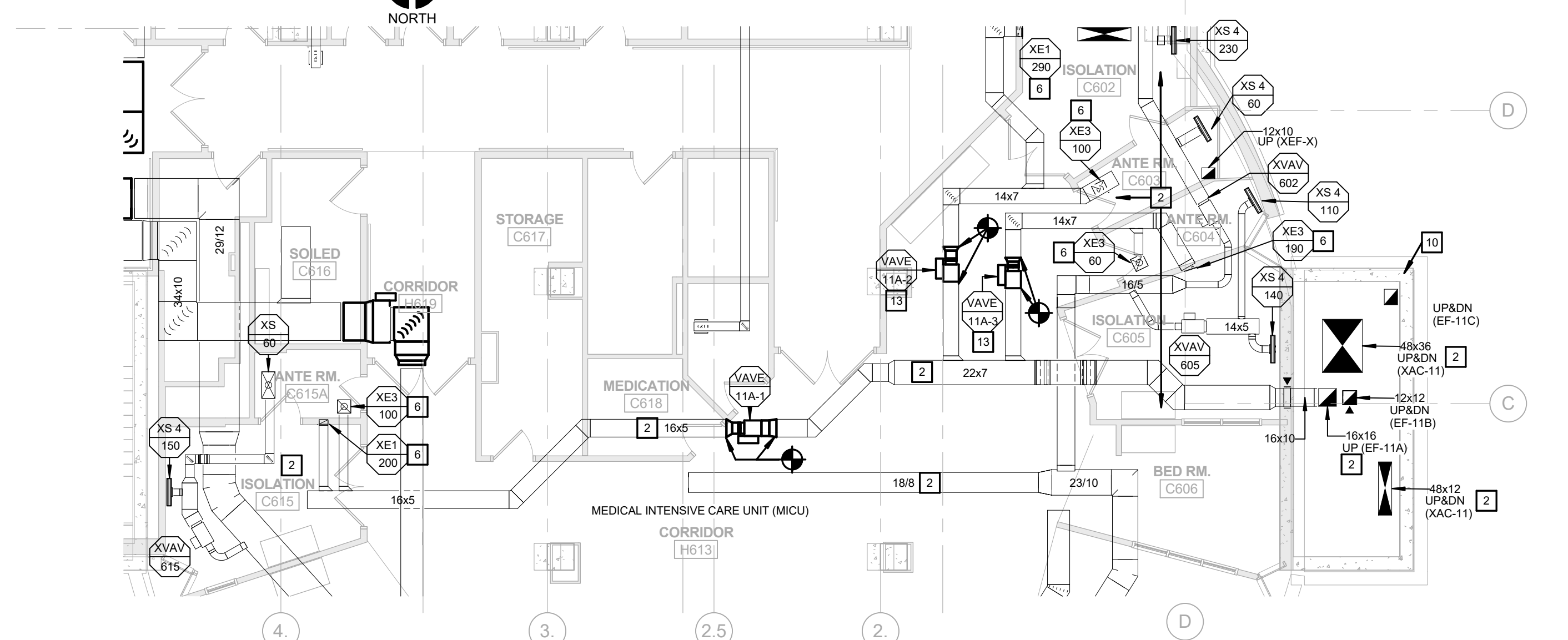
MECHANICAL 7TH FLOOR (ROOF) PLAN - M3
1/8" = 1'-0"



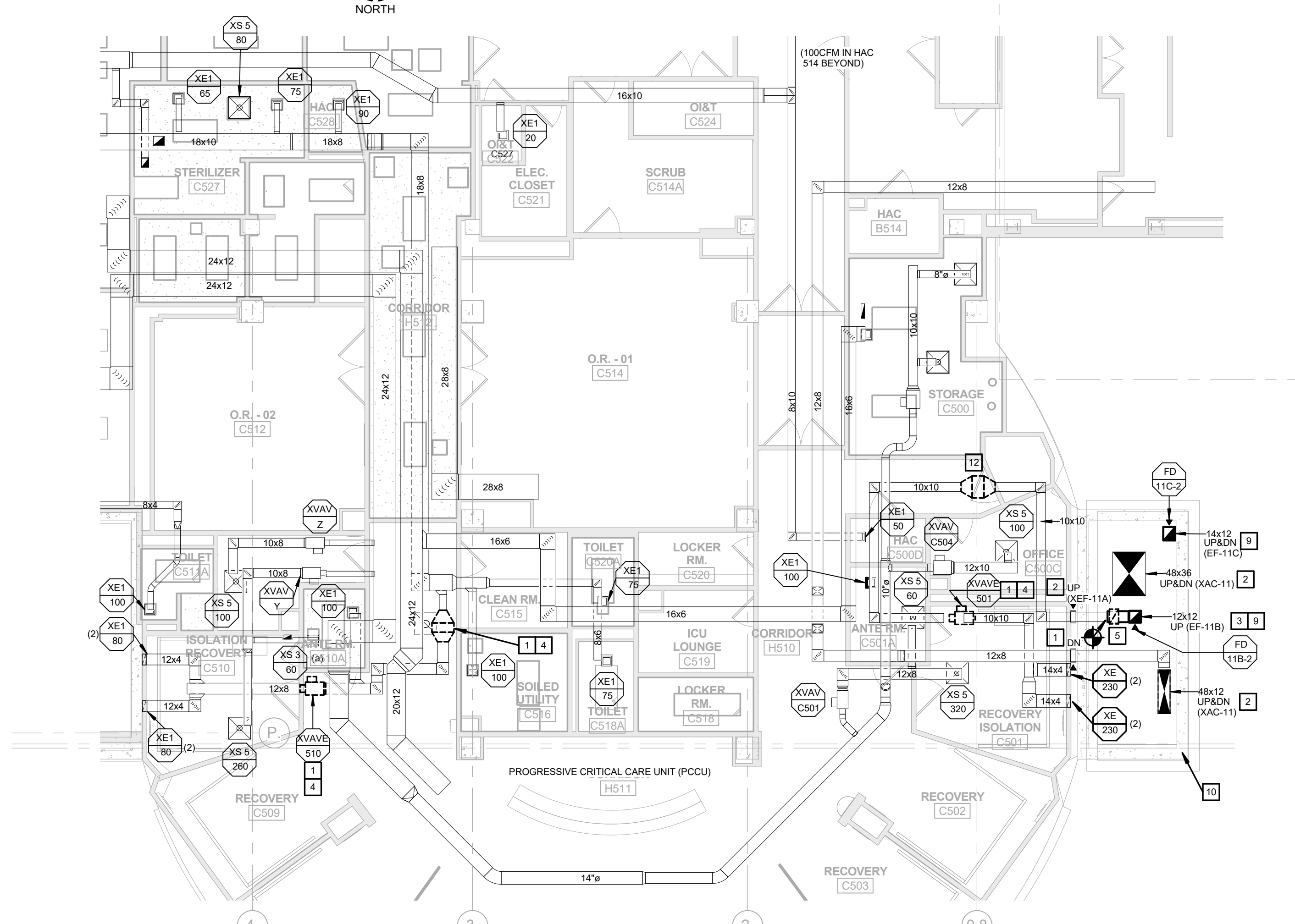
MECHANICAL 7TH FLOOR (ROOF) PLAN - M4
1/8" = 1'-0"



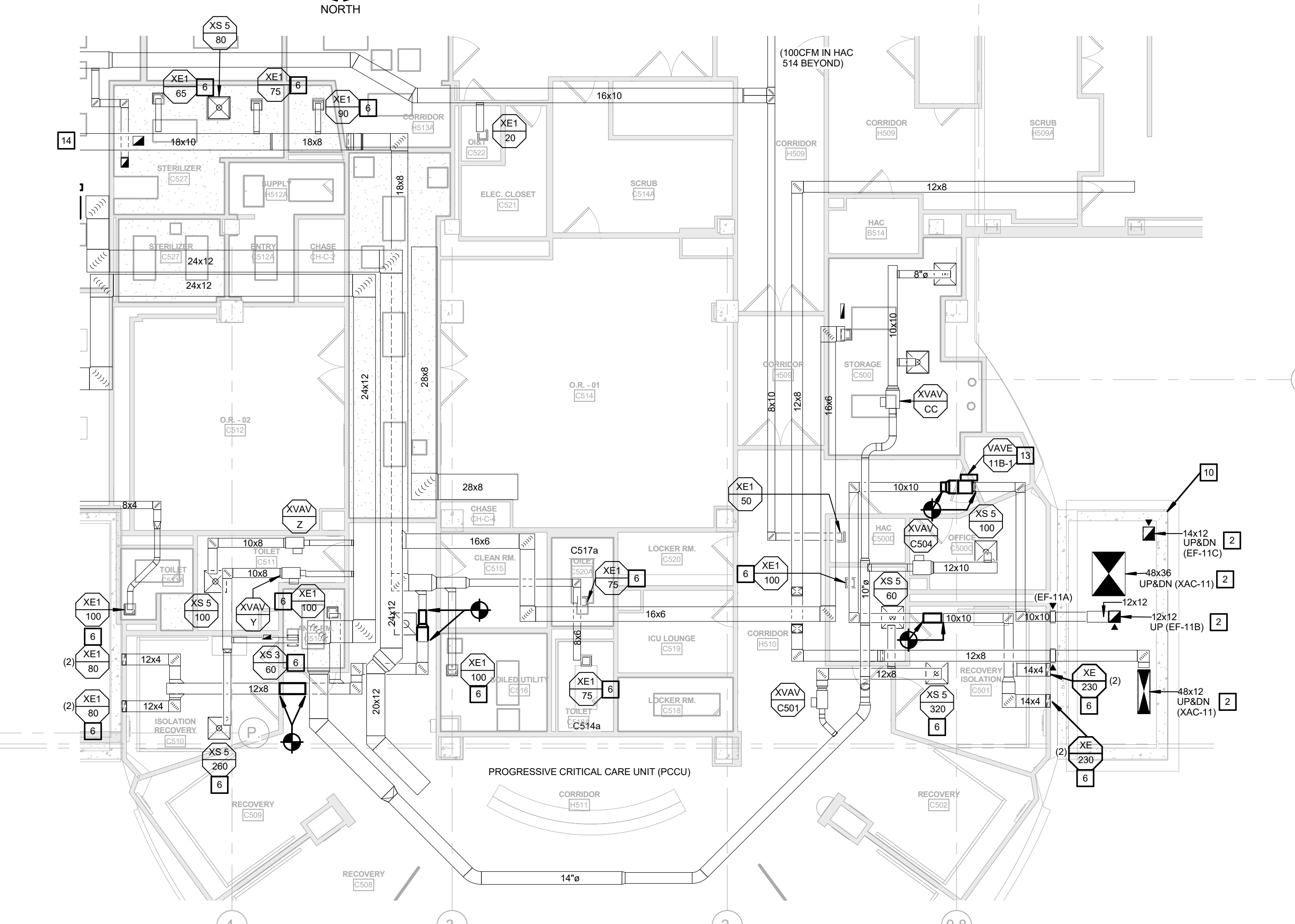
MECHANICAL - 6TH FLOOR PLAN - M3
1/8" = 1'-0"



MECHANICAL - 6TH FLOOR PLAN - M4
1/8" = 1'-0"

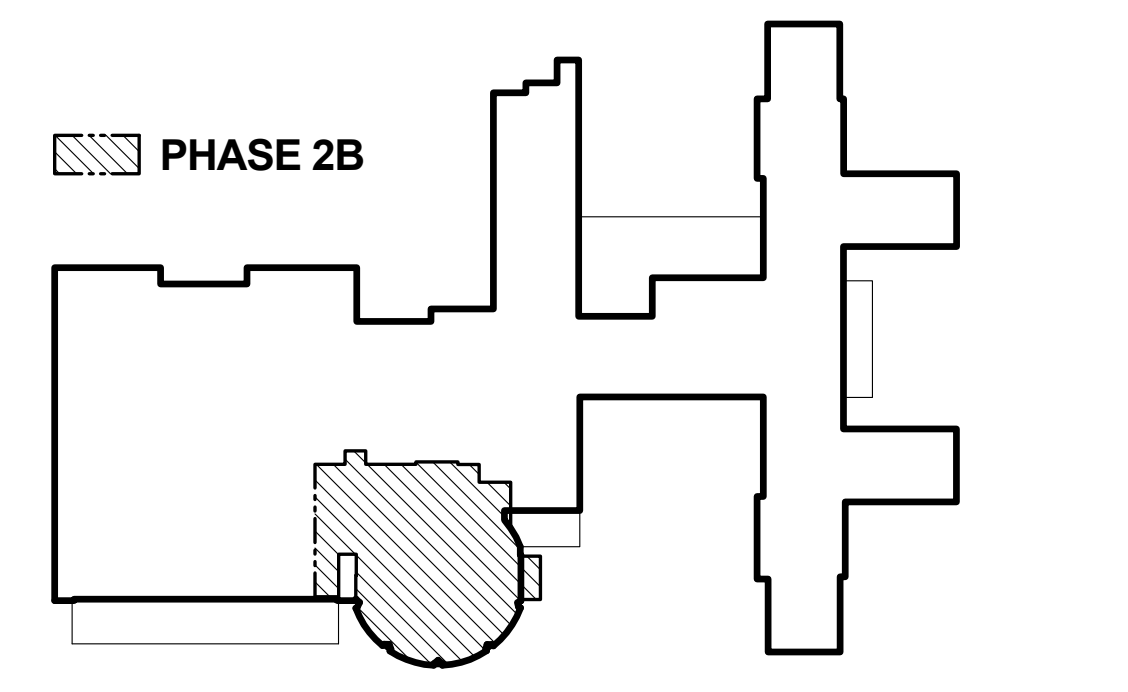


MECHANICAL - 5TH FLOOR PLAN - M3
1/8" = 1'-0"



MECHANICAL - 5TH FLOOR PLAN - M4
1/8" = 1'-0"

- MECHANICAL GENERAL NOTES:**
- SEE SHEET 1-2A-M-001 FOR MECHANICAL GENERAL NOTES.
 - THE PROJECT LIMIT LINE SHOWN ON THE DRAWINGS INDICATES THE AREA OF SUBSTANTIAL ARCHITECTURAL RENOVATION AND IS NOT INCLUSIVE OF ALL AREAS WHERE WORK WILL BE PERFORMED BY OTHER TRADES.
 - WORK IN CORRIDORS TO BE DONE AFTER HOURS OR WEEKENDS, COORDINATE WITH VA COR.
 - WORK OUTSIDE OF THE PROJECT LIMIT LINE TO BE COMPLETED AFTER HOURS OR WEEKENDS, COORDINATE WITH VA COR.
 - SHUT-DOWNS TO BE DONE AFTER HOURS OR WEEKENDS, COORDINATE WITH VA COR.
 - REFER TO LIFE SAFETY PLAN FOR RATED ASSEMBLIES.
- MECHANICAL KEYED NOTES:**
- REMOVE HVAC SHOWN BOLD-DASHED, TYPICAL.
 - EXISTING HVAC TO REMAIN, TYPICAL.
 - DUCTWORK CAPPED FOR FUTURE.
 - COORDINATE SHUTDOWN WITH VA COR.
 - REMOVE EXISTING RISER SERVING 4TH AND 5TH FLOORS. CAP AFTER 6TH FLOOR TAKEOFF. SEE ELEVATION ON SHEET 1-2B-M-502.
 - REBALANCE TO CFM SHOWN.
 - ROUTE DUCTWORK ON ROOF RAIL WITH STRUT SUPPORT SYSTEM, SEE DETAIL.
 - COORDINATE NEW WALL OPENING WITH GENERAL CONTRACTOR. SEE STRUCTURAL AND ARCHITECTURAL DRAWINGS.
 - COORDINATE NEW FLOOR OPENING WITH GENERAL CONTRACTOR. SEE STRUCTURAL DRAWINGS.
 - ACCESS TO SHAFT IS ON THE 2ND FLOOR. COORDINATE WORK WITH C.O.R. TYPICAL.
 - HANG DUCT FROM CEILING, APPROX. 60' AFF TYP.
 - REMOVE EXISTING FILTER BANK.
 - COORDINATE INTEGRATING NEW DDC TYPE VAV BOXES WITH CONTROLS CONTRACTOR. THE EXISTING DDC PRESSURE MONITORS AND SENSORS SERVING ROOM SHALL REMAIN.
 - SYSTEM CONNECTED TO XEF-11. TO BE CONNECTED TO EF-51 IN PHASE 2B1.



Revisions:	Date
AMENDMENT A00004	06/06/16

CONSULTANTS:

ARCHITECT/ENGINEERS:

FoxArchitects
One Memorial Drive
Suite 1800
Saint Louis, MO 63102

Tel 314.621.4343
Fax 314.621.0261

VOSB
Veterans Owned Small Business

SSC
Swim, Schuchat, & Cornett
Engineering, Inc.
1801 Collins Memorial
Charlestown, Missouri 63025
Phone 636.350.7770 Fax 636.350.7877
Missouri Certificate of Authority #NC 001244

Drawing Title
MECHANICAL (ISOLATION EF) 5TH, 6TH AND 7TH FLOOR DEMOLITION & RENOVATION PLANS

Approved: Associate Director	Approved: Chief Engineer
Approved: Chief of Staff	Approved: Safety Officer
Approved: Infection Control	Approved: Chief, Police & Security

Project Title PHASE 2B: Renovation of Operating Rooms, ER and Triage	Project Number 657-13-300JC
Location V.A.M.C. ST. LOUIS, MO JOHN COCHRAN DIVISION	Building Number 01
Date 02/24/16	Drawing Number 1-2B-M-105
Checked Designer	Drawn Author
Veterans Health Administration Department of Veterans Affairs	