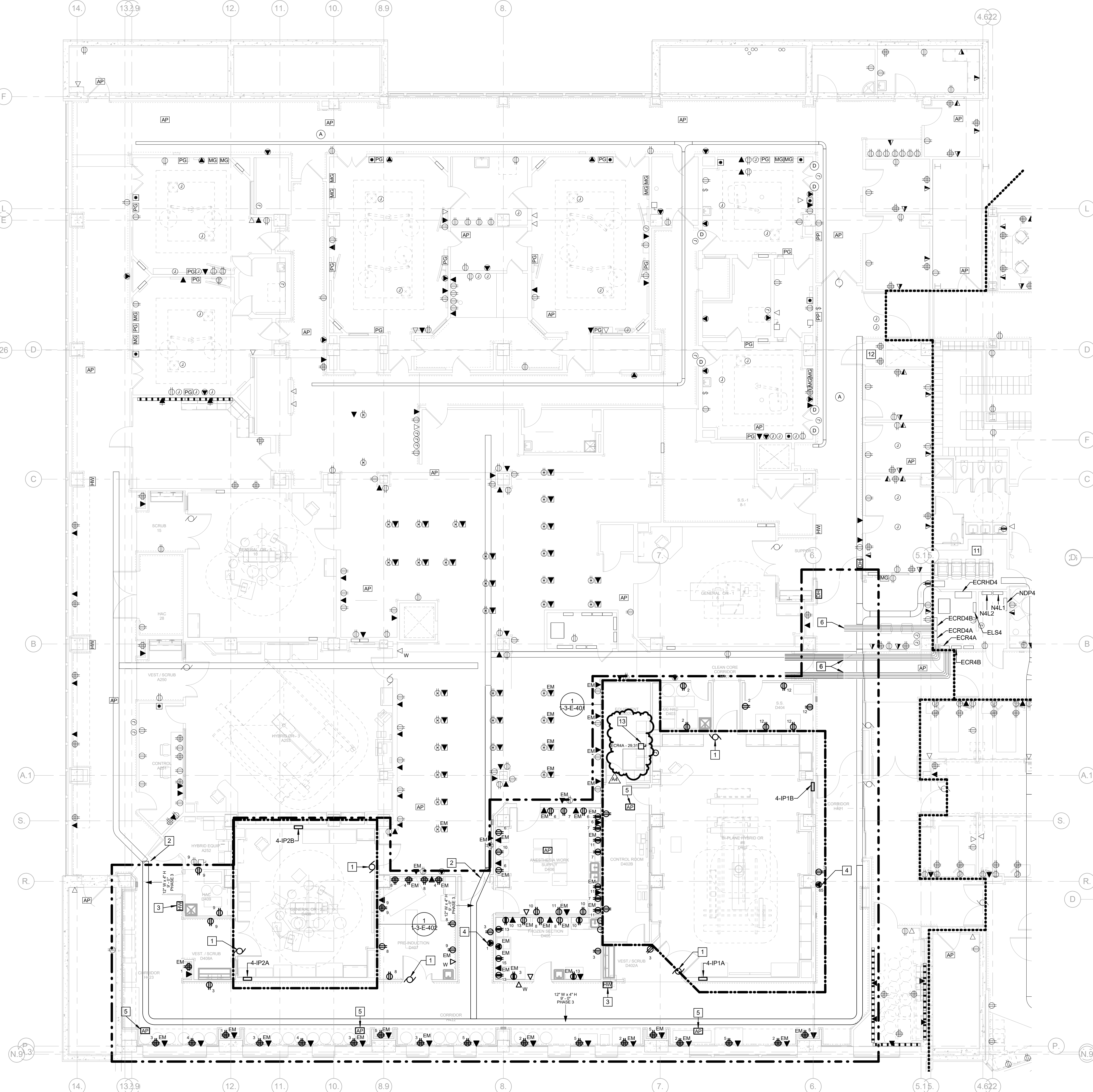


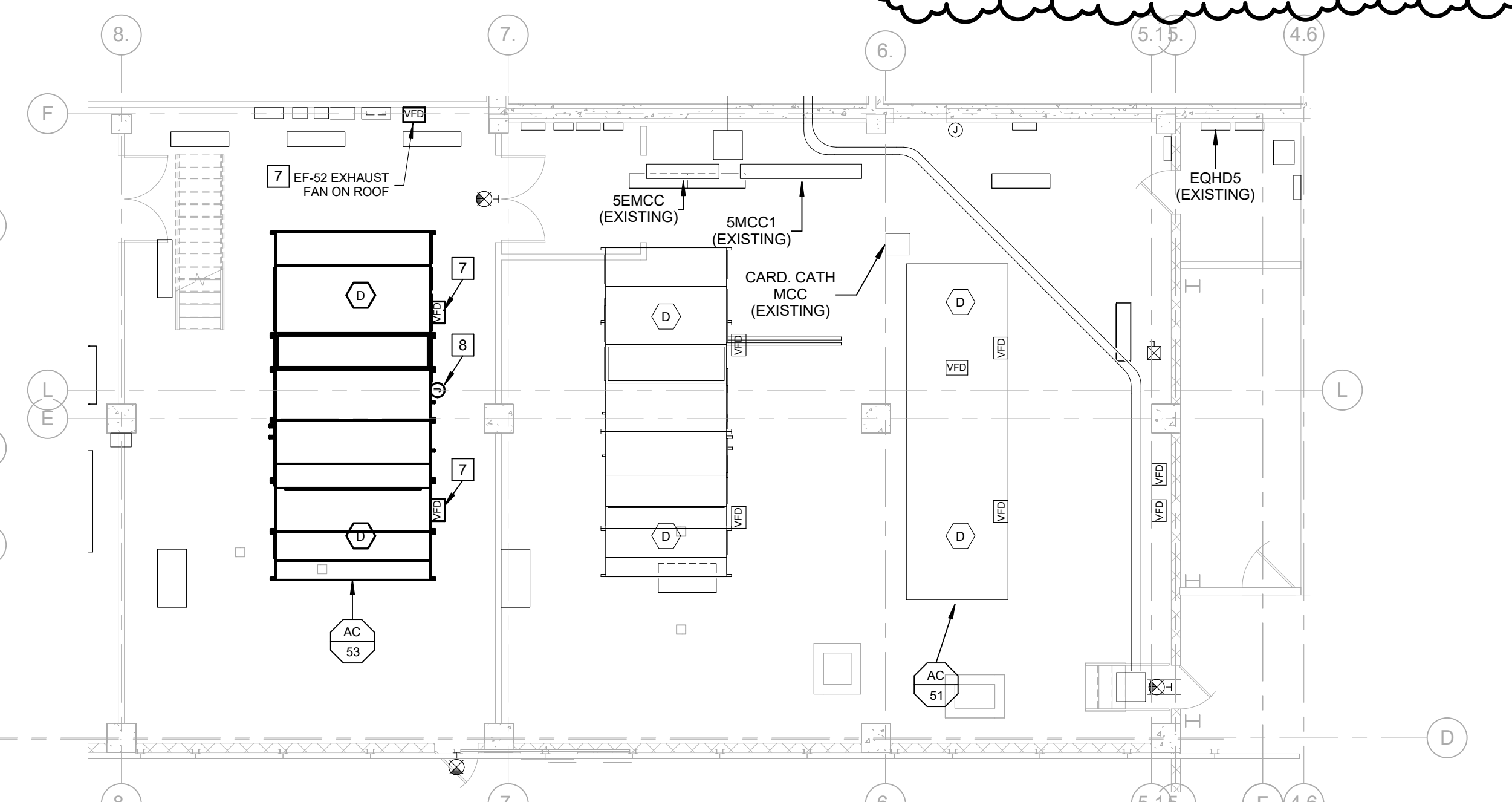
three inches = one foot
one and one half inches = one foot
one inch = one foot
three quarters inch = one foot
one half inch = one foot
three eighths inch = one foot
one quarter inch = one foot
one eighth inch = one foot

- ELECTRICAL GENERAL NOTES:**
- SEE SHEET 136-01 FOR ELECTRICAL GENERAL NOTES, SYMBOLS AND ABBREVIATIONS.
 - THE PROJECT LIMIT LINE SHOWN ON THE DRAWINGS INDICATES THE AREA OF SUBSTANTIAL ARCHITECTURAL RENOVATION AND IS NOT INCLUSIVE OF ALL AREAS WHERE WORK WILL BE REQUIRED TO BE PERFORMED BY OTHER TRADES. THE CONTRACTOR IS RESPONSIBLE FOR ROUTING UTILITIES THROUGH AREAS OUTSIDE THE PROJECT LIMIT LINE WHICH ARE REQUIRED FOR THE SYSTEMS SHOWN ON THE DRAWINGS. COORDINATE WITH THE COR.
 - ALL NORMAL POWER CIRCUITS TO PANEL NAL1 AND EMERGENCY CIRCUITS TO PANEL ECR4A U.N.C. REFER TO ARCHITECTURAL LS SERIES SHEETS FOR FIRE/SMOKE PARTITIONS.

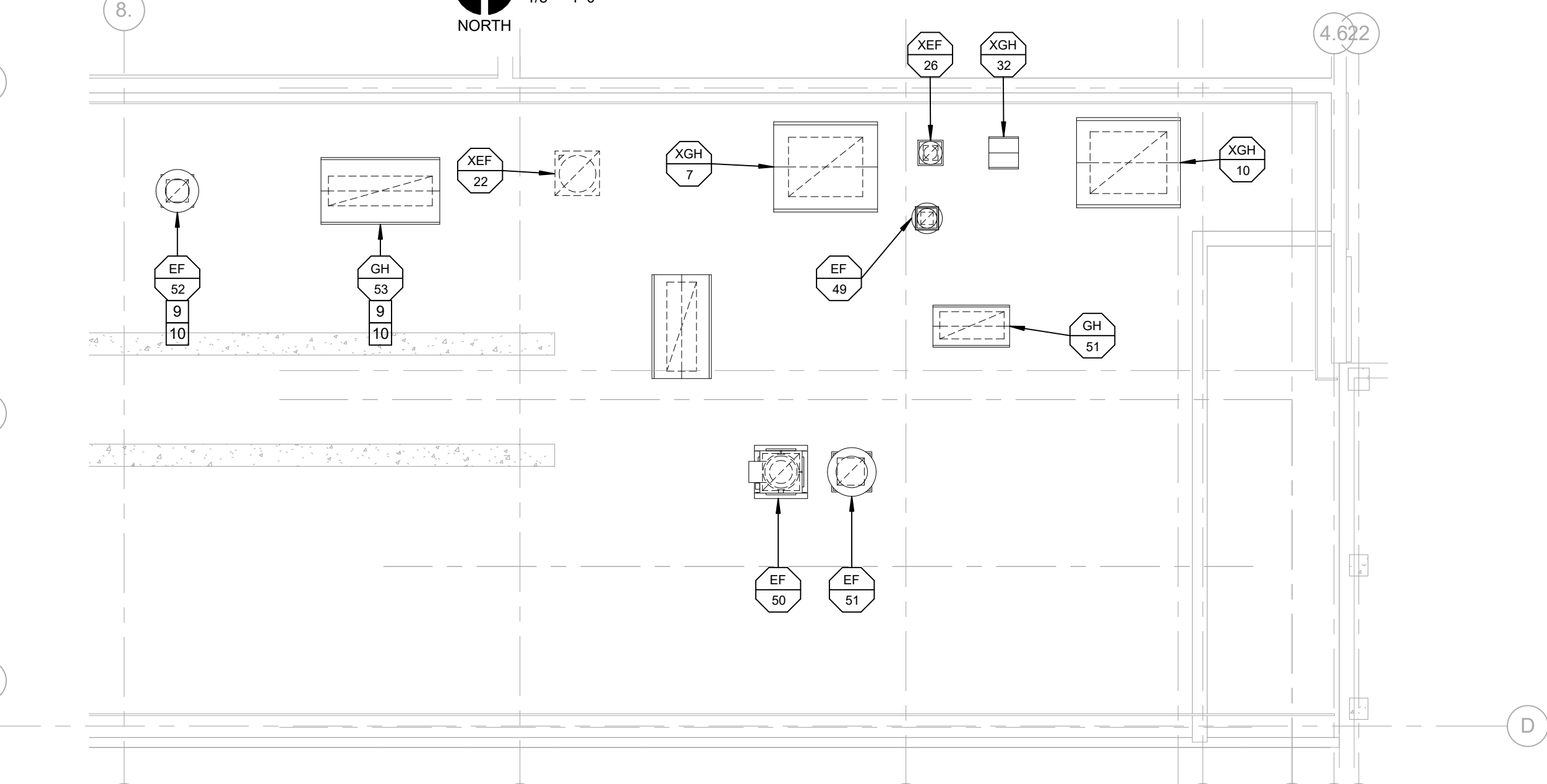
- Keynote Legend**
- | | |
|----|--|
| 1 | CONNECT POWER ASSIST DOORS PER DOOR HARDWARE INSTALLATION INSTRUCTIONS. |
| 2 | CONNECT NEW 12"X4" LADDER CABLE TRAY TO EXISTING CABLE TRAY INSTALLED IN PHASE 2A. COORDINATE CLOSELY WITH OTHER TRADES FOR WORK ABOVE CEILING. |
| 3 | CONNECT HAND WAVE SENSOR TO OPEN AUTOMATIC DOORS. COORDINATE WITH DOOR HARDWARE AND SECURITY SYSTEM MANUFACTURER AND PROVIDE ALL ACCESSORIES/RELAYS AS REQUIRED FOR A COMPLETE WORKING SYSTEM. |
| 4 | COORDINATE TO INSTALL RECEPTACLE TO MATCH EXISTING VIA FLOOR CLEANING RECEPTACLE. |
| 5 | INSTALL EXISTING WIRELESS DATA ACCESS POINT TO NEW CEILING. |
| 6 | UTILIZE EXISTING SPARE CONDUITS ROUTED IN CORRIDOR FROM ELECTRICAL ROOM. EXTEND AS REQUIRED FOR NEW FEEDERS AND BRANCH CIRCUITS. |
| 7 | CONNECT HVAC EQUIPMENT VIA VFD WITH INTEGRAL DISCONNECT SWITCH FURNISHED BY THE TEMPERATURE CONTROLS CONTRACTOR. COORDINATE WITH THE M.C. FOR ROUGH-IN AND INSTALLATION LOCATION. REFER TO ONE-LINE DIAGRAM. |
| 8 | PROVIDE DEDICATED 20A, 120V CIRCUIT FOR U.V. LIGHTS WITHIN ROOF TOP UNIT VIA LOCAL DISCONNECT FURNISHED WITH UNIT. CONNECT TO PANEL EQD IN RM. D505. |
| 9 | PROVIDE NEW LIGHTNING PROTECTION ON NEW METALLIC EQUIPMENT ON ROOF AND CONNECT TO THE EXISTING ROOF LIGHTNING PROTECTION SYSTEM PER THE SPECIFICATIONS. |
| 10 | CONNECT HVAC EQUIPMENT VIA LOCAL FACTORY FURNISHED DISCONNECTING MEANS. COORDINATE WITH M.C. FOR ROUGH-IN. CONNECT VIA MOTOR CONTROL EQUIPMENT ON THE 5TH FLOOR BELOW. SEE 5TH FLOOR PLAN ON THIS SHEET. |
| 11 | ALL CABLING FOR DATA OUTLETS SHALL BE ROUTED TO THIS DATA ROOM B427. |
| 12 | CONNECT FAN COIL UNIT LOCATED ON 5TH FLOOR ABOVE VIA LOCAL FACTORY FURNISHED DISCONNECTING MEANS. COORDINATE WITH U.S.M.C. FOR ROUGH-IN. |
| 13 | CONNECT FAN COIL UNIT LOCATED ON 5TH FLOOR ABOVE VIA LOCAL FACTORY FURNISHED DISCONNECTING MEANS. COORDINATE WITH U.S.M.C. FOR ROUGH-IN. |



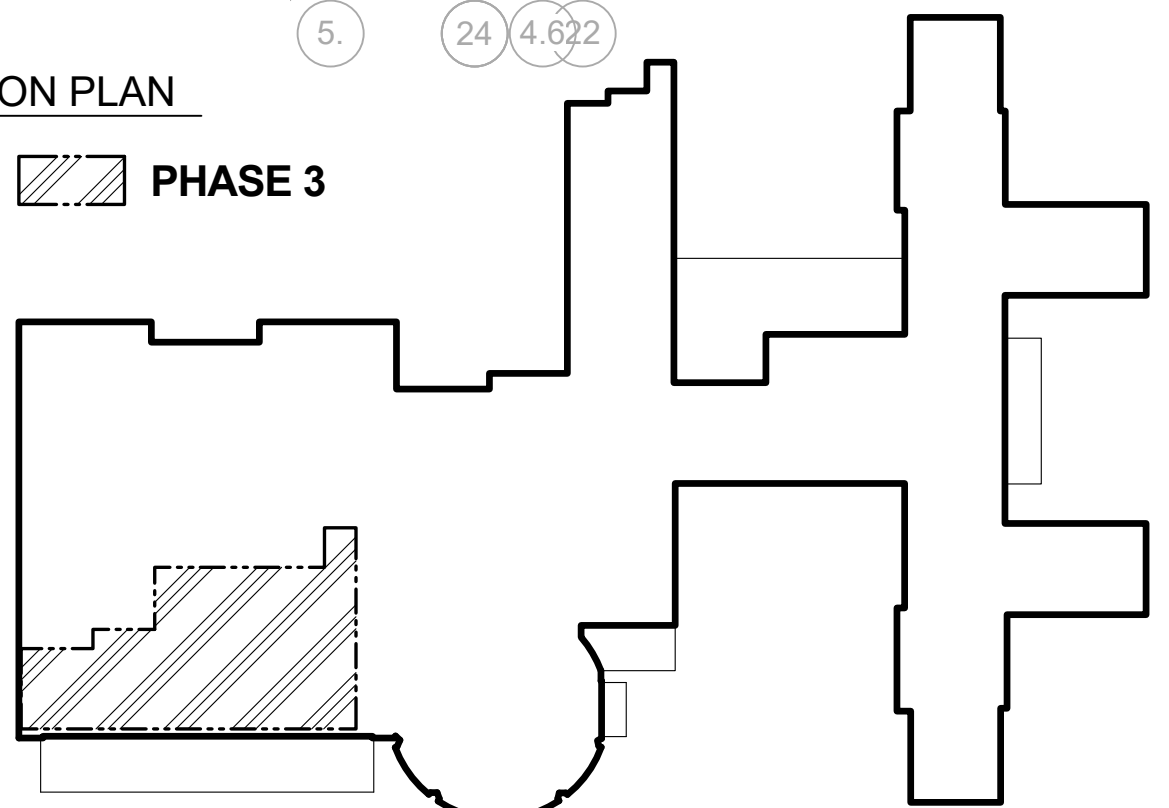
ELECTRICAL 4TH FLOOR POWER & SYSTEMS RENOVATION PLAN
1/8" = 1'-0"
NORTH



ELECTRICAL 5TH FLOOR RENOVATION PLAN
1/8" = 1'-0"
NORTH



ELECTRICAL 6TH FLOOR MEZZANINE ROOF RENOVATION PLAN
1/8" = 1'-0"
NORTH



PHASE 3

Revisions:	Date
AMENDMENT A00004	06/06/16

CONSULTANTS:

ARCHITECT/ENGINEERS:

FoxArchitects

One Memorial Drive
Suite 1800
Saint Louis, MO 63102

Tel 314.621.4343
Fax 314.621.0261

VOSB

Small Business Set-aside

SSC

Swim, Schuchat, & Cornett
Engineering, Inc.

1801 Cedar Avenue
Chesterfield, Missouri 63005
Phone 636.330.7770 Fax 636.330.7877
Missouri Certificate of Authority #NC 001244

Drawing Title ELECTRICAL 4TH FLOOR POWER & SYS. RENOVATION PLAN	
Approved: Associate Director	Approved: Chief Engineer
Approved: Chief of Staff	Approved: Safety Officer
Approved: Infection Control	Approved: Chief, Police & Security

Project Title Phase 3: Renovation of Operating Rooms, ER & Triage	
Location V.A.M.C. ST. LOUIS, MO JOHN COCHRAN DIVISION	
Date 02/24/16	Checked MRJ
Drawn JMS	

Project Number 657-13-300JC	Veterans Health Administration
Building Number 01	
Drawing Number 1-3-E-102	Department of Veterans Affairs