

three inches = one foot

one and one half inches = one foot

one inch = one foot

three quarters inch = one foot

one half inch = one foot

three eighths inch = one foot

one quarter inch = one foot

one eighth inch = one foot

Revisions:	Date
AMENDMENT A00004	06/06/16

CONSULTANTS:

ARCHITECT/ENGINEERS:

FoxArchitects

One Memorial Drive  
Suite 1800  
Saint Louis, MO 63102

Tel 314.621.4343  
Fax 314.621.0261



SSC

Swim, Schuchat, & Cornett  
Engineering, Inc.  
18201 Collins Industrial  
Chesterfield, Missouri 63025  
Phone 636.350.7770 Fax 636.530.7877  
Missouri Certificate of Authority #NC 001244

Drawing Title  
MECHANICAL 4TH FLOOR DUCTWORK DEMOLITION & RENOVATION PLANS

Approved: Associate Director

Approved: Chief of Staff

Approved: Infection Control

Approved: Chief Engineer

Approved: Safety Officer

Approved: Chief, Police & Security

Project Title  
Phase 3: Renovation of  
Operating Rooms, ER & Triage

Location  
V.A.M.C. ST. LOUIS, MO  
JOHN COCHRAN DIVISION

Date  
02/24/16

Checked  
SSC

Drawn  
Author

Project Number  
657-13-300JC  
Building Number  
01  
Drawing Number  
1-3-M-101

Veterans  
Health  
Administration



#### MECHANICAL GENERAL NOTES:

- SEE SHEET 1-3-M-001 FOR MECHANICAL GENERAL NOTES.
- THE PROJECT LIMIT LINE SHOWN ON THE DRAWINGS INDICATES THE AREA OF SUBSTANTIAL ARCHITECTURAL RENOVATION AND IS NOT INCLUSIVE OF ALL AREAS WHERE WORK WILL BE PERFORMED BY OTHER TRADES.
- ALL WORK IN THIS PHASE SHALL BE DONE AFTER NORMAL WORKING HOURS AND WEEKENDS.
- WORK OUTSIDE OF THE PROJECT LIMIT LINE TO BE COMPLETED AFTER HOURS OR WEEKENDS, COORDINATE WITH VA COR.
- SHUT-DOWNS TO BE DONE AFTER HOURS OR WEEKENDS, COORDINATE WITH VA COR.
- REFER TO LIFE SAFETY PLAN FOR RATED ASSEMBLIES.
- SEE SHEET 1-3-M-106 FOR THERMOSTATS, PRESSURE SENSORS, ETC.

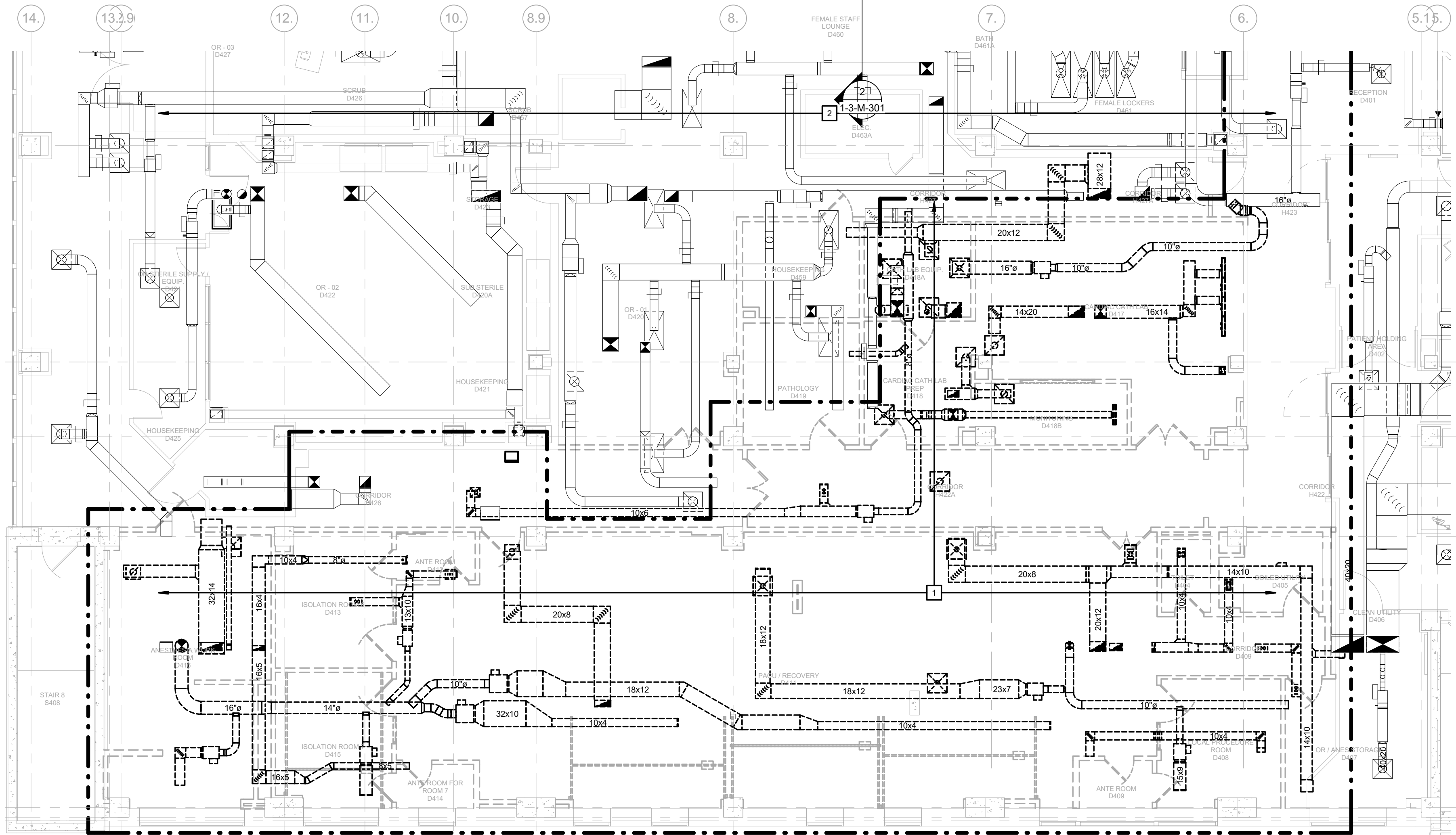
#### MECHANICAL KEYED NOTES:

- REMOVE HVAC SHOWN BOLD-DASHED INCLUDING HANGERS, THERMOSTATS, SENSORS, ETC. TYPICAL.
- EXISTING HVAC TO REMAIN. TYPICAL.
- DUCTWORK CAPPED FOR FUTURE.
- COORDINATE SHUTDOWN WITH VA COR.
- TEMPORARY DUCTWORK.
- BOTTOM OF SIDEWALL RETURN GRILLE TO BE LOCATED 6" ABOVE FINISHED FLOOR.
- COORDINATE DUCTWORK WITH SURGICAL BOOMS, TYPICAL.
- DUCTWORK DOWNSTREAM OF TERMINAL HEPA FILTER TO AIR DEVICE SHALL BE STAINLESS STEEL, TYPICAL.
- PENETRATIONS THROUGH RATED CORRIDOR WALL SHALL BE FIRE-STOPPED PER SPECIFICATIONS, TYPICAL.
- BALANCE TO CFM SHOWN.
- PROVIDE ACCESS PANEL IN DRYWALL CEILING TO ACCESS CONTROLS/DAMPER, TYPICAL.
- INTEGRATED CEILING SYSTEM CONSISTING OF DIFFUSERS, BLANK-OFF PANELS, LIGHT FIXTURES TO BE BY OTHERS. SYSTEM TO INTEGRATE WITH IMAGING EQUIPMENT AND BOOM LAYOUT. SEE SPECIFICATION SECTION 23.37.13.
- ELECTRICAL BOX AND STRUCTURAL SUPPORTS FOR FLOOR MOUNTED EQUIPMENT IN THE B+PLANE-HYBRID OR #1 ROOM SHOWN FOR REFERENCE.
- OFFSET EXISTING DUCTWORK TO MISS NEW ELECTRICAL CONDUIT.
- OFFSET EXISTING DUCTWORK FOR INSTALLATION OF NEW ELECTRICAL BOX AND STRUCTURAL SUPPORTS.
- EXISTING DUCTS TO BE INSTALLED AS HIGH AS POSSIBLE. COORDINATE WITH PHASE 2A CONTRACTOR.

#### MECHANICAL - 3RD FLOOR - PHASE 3-M0

1/8" = 1'-0"

NORTH



#### MECHANICAL - 4TH FLOOR - PHASE 3-M0 - DUCTWORK

1/8" = 1'-0"

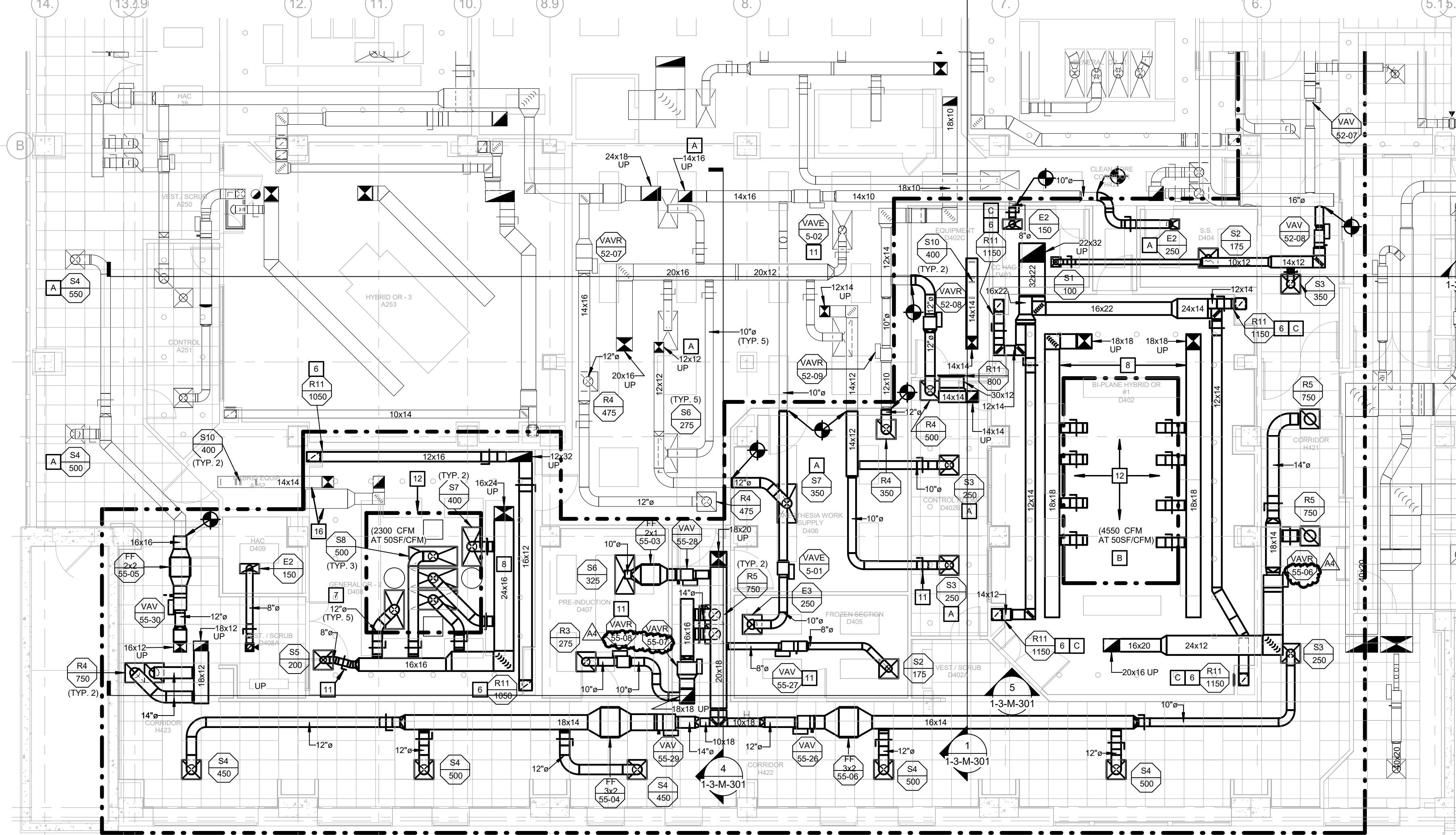
NORTH



#### MECHANICAL - 3RD FLOOR - PHASE 3-M1

1/8" = 1'-0"

NORTH



#### MECHANICAL - 4TH FLOOR - PHASE 3-M1 - DUCTWORK

1/8" = 1'-0"

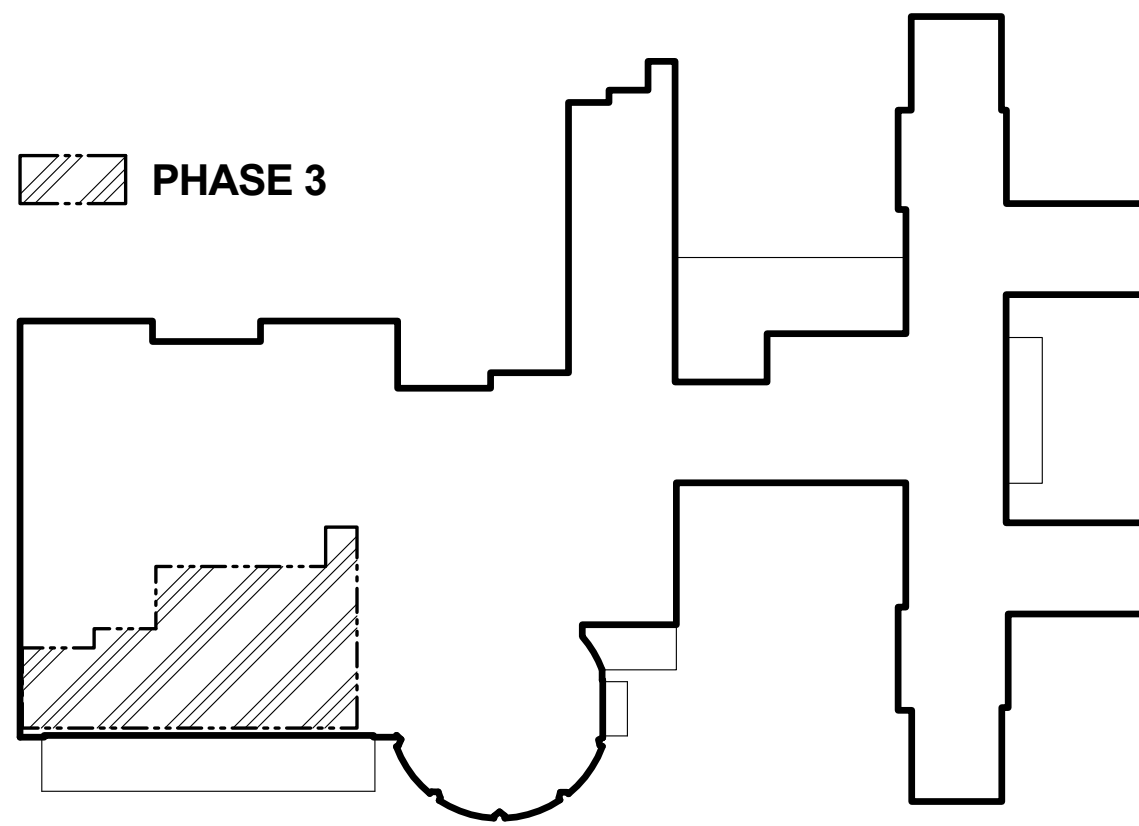
NORTH



#### BALANCING KEYED NOTES:

- COORDINATE BALANCING WITH PHASE 2A CONTRACTOR. THE ASSOCIATED SYSTEM SHALL BE INCLUDED IN THIS PROJECT BALANCE REPORT(S).
- LAMINAR SUPPLY DIFFUSERS SHALL BE LIMITED TO 4000 CFM UNTIL PHASE 4 WORK IS COMPLETED.
- RETURN AIR DEVICE SHALL BE LIMITED TO 865 CFM EACH UNTIL PHASE 4 WORK IS COMPLETED.

PHASE 3



BID DOCUMENTS