

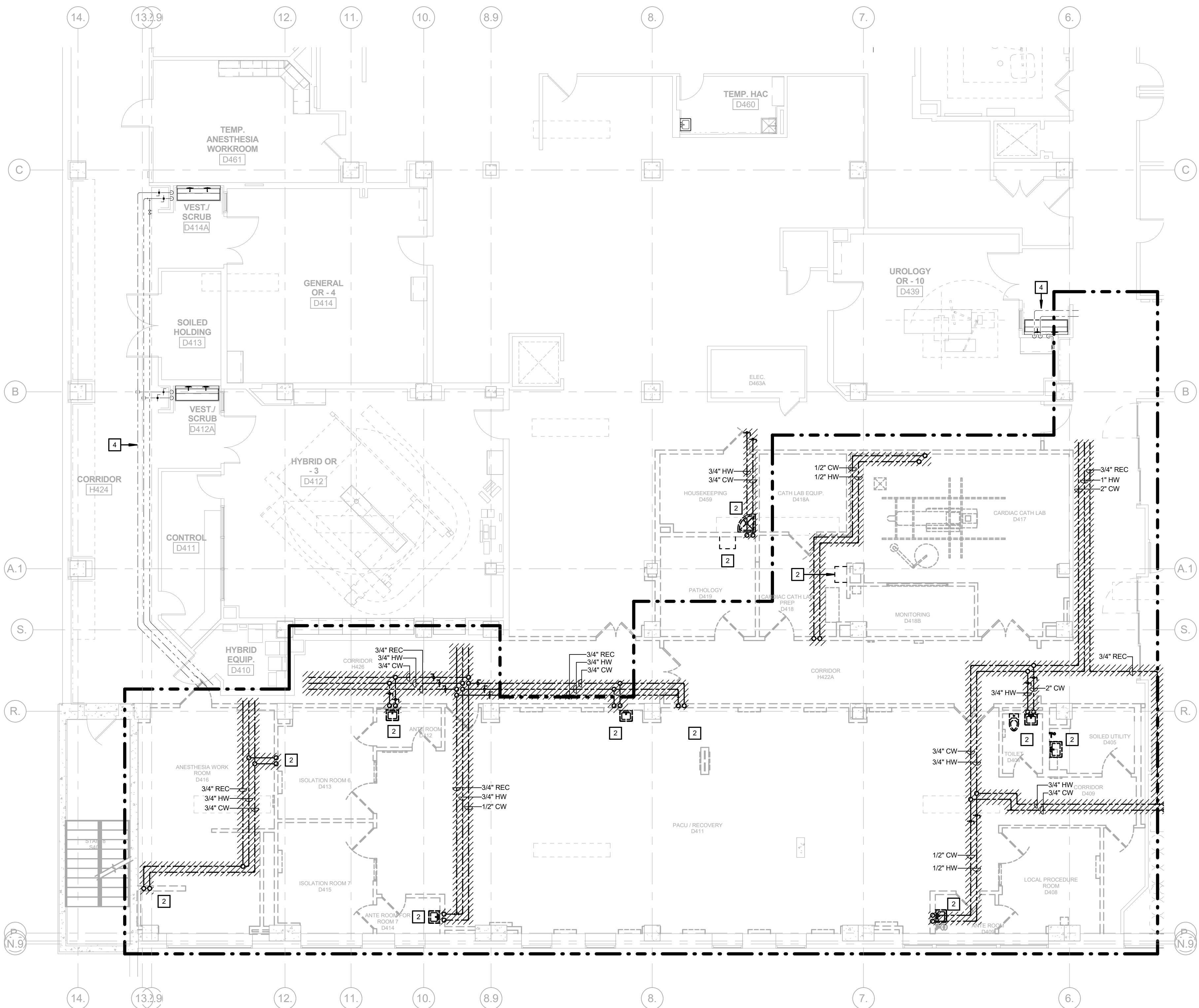
three inches = one foot  
one and one half inches = one foot  
one inch = one foot  
three quarters inch = one foot  
one half inch = one foot  
three eighths inch = one foot  
one quarter inch = one foot  
one eighth inch = one foot

PLUMBING GENERAL NOTES:

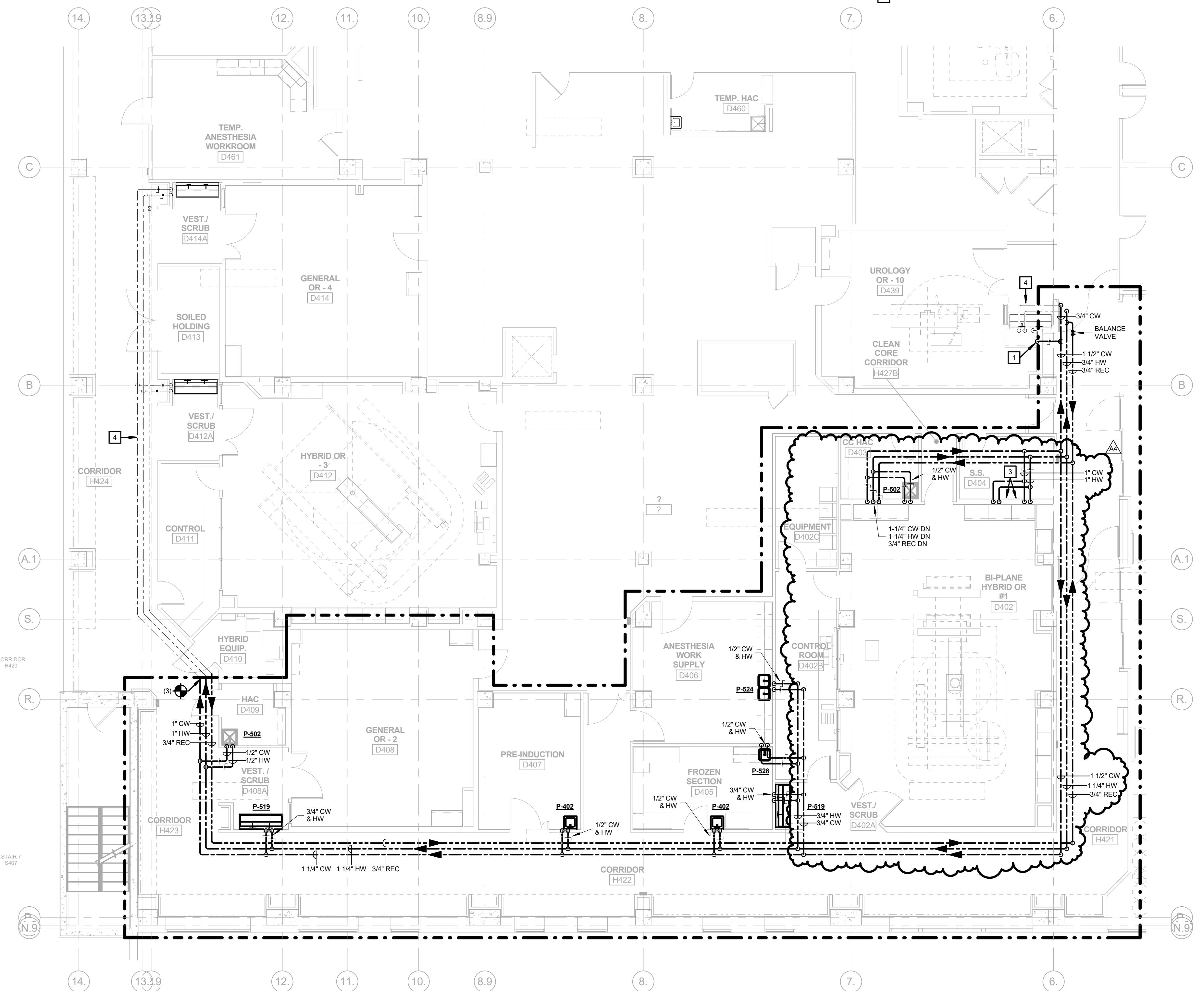
- SEE SHEET 1-3-P-001 FOR SYMBOLS AND GENERAL NOTES.
- THE PROJECT LIMIT LINE SHOWN ON THE DRAWINGS INDICATES THE AREA OF SUBSTANTIAL ARCHITECTURAL RENOVATION AND IS NOT INCLUSIVE OF ALL AREAS WHERE WORK WILL BE REQUIRED TO BE PERFORMED BY OTHER TRADES. THE CONTRACTOR IS RESPONSIBLE FOR ROUTING UTILITIES THROUGH AREAS OUTSIDE THE PROJECT LIMIT LINE WHICH ARE REQUIRED FOR THE SYSTEMS SHOWN ON THE DRAWINGS. COORDINATE THIS WORK WITH THE COR.
- WORK DONE ON THIS FLOOR SHALL BE DONE AFTER NORMAL WORKING HOURS. COORDINATE TIME WITH C.O.R. TO MINIMIZE DOWNTIME.
- THE PLUMBING CONTRACTOR SHALL COORDINATE WITH THE GENERAL CONTRACTOR FOR SYSTEM SHUT DOWN AFFECTING AREAS OUTSIDE THE SCOPE OF WORK. GIVE A 10 DAY NOTICE TO THE C.O.R.

PLUMBING KEYED NOTES:

- 1-1/2" CW SUPPLY TO FLUSH VALVE FOR FLOOR DRAIN "L". ROUTE PIPE TO BELOW FLOOR AND CONNECT TO FLOOR DRAIN.
- DISCONNECT AND REMOVE EXISTING PLUMBING FIXTURE. REMOVE RELATED ROUGH-IN, WATER, SANITARY AND VENT PIPE BACK TO MAIN.
- ROUTE 1" CW AND 3/4" HW TO STERILIZERS. COORDINATE LOCATION OF STERILIZERS WITH ARCHITECTS DRAWINGS.
- PIPING SHOWN OUTSIDE OF PROJECT LIMIT LINES IS PART OF PHASE 2A.

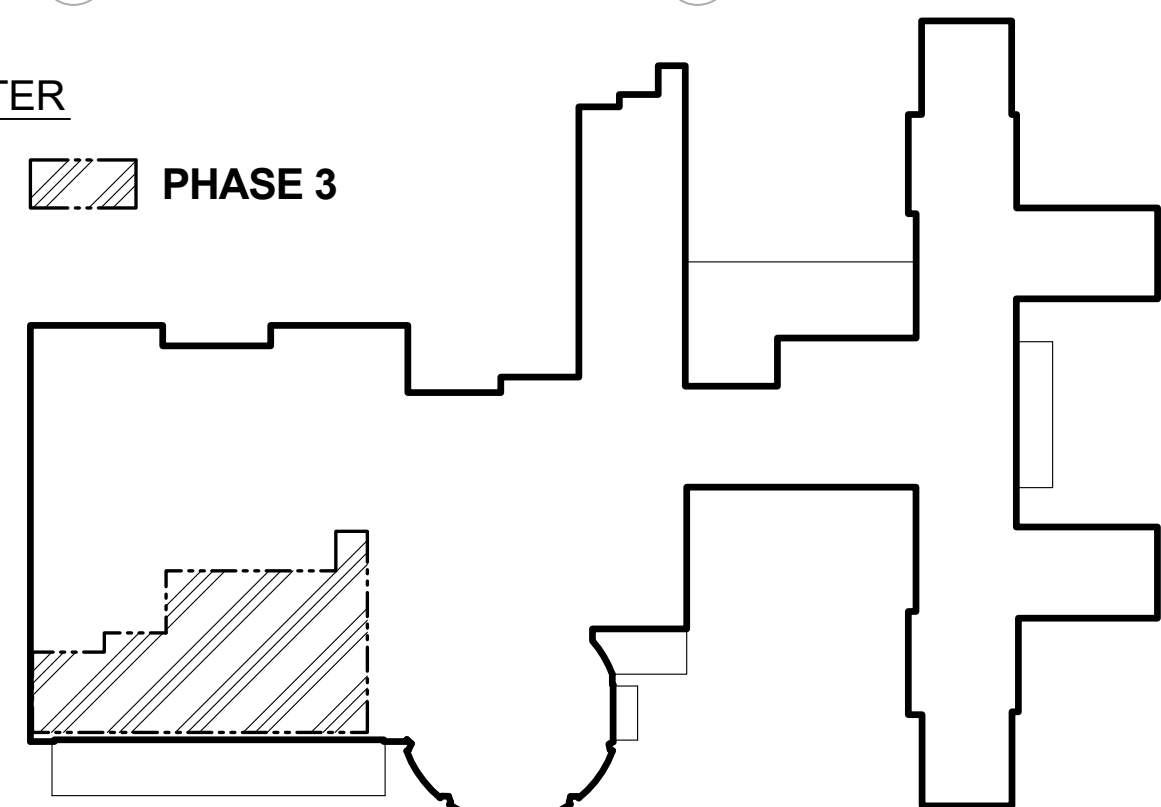


PLUMBING 4TH FLOOR DEMOLITION PLAN - DOMESTIC WATER  
1/8" = 1'-0"  
NORTH



PLUMBING 4TH FLOOR RENOVATION PLAN - DOMESTIC WATER  
1/8" = 1'-0"  
NORTH

PHASE 3



BID DOCUMENTS

Revisions:	Date
AMENDMENT A00004	06/06/16

CONSULTANTS:

ARCHITECT/ENGINEERS:

FoxArchitects

One Memorial Drive  
Suite 1800  
Saint Louis, MO 63102

Tel 314.621.4343  
Fax 314.621.0261



SSC

Swim, Schuchat, & Cornett  
Engineering, Inc.  
18201 Collins Industrial  
Chesterfield, Missouri 63025  
Phone 636.350.7770 Fax 636.530.7877  
Missouri Certificate of Authority #NC 001244

Drawing Title  
PLUMBING 4TH FLOOR DEMOLITION & RENOVATION  
PLANS - DOMESTIC WATER

Approved: Associate Director

Approved: Chief of Staff

Approved: Infection Control

Approved: Chief Engineer

Approved: Safety Officer

Approved: Chief, Police & Security

Project Title  
Phase 3: Renovation of  
Operating Rooms, ER & Triage

Location  
V.A.M.C. ST. LOUIS, MO  
JOHN COCHRAN DIVISION

Date  
02/24/16

Checked  
Designer

Drawn  
Author

Project Number  
657-13-300JC

Building Number  
01

Drawing Number  
1-3-PL-202

Veterans  
Health  
Administration

