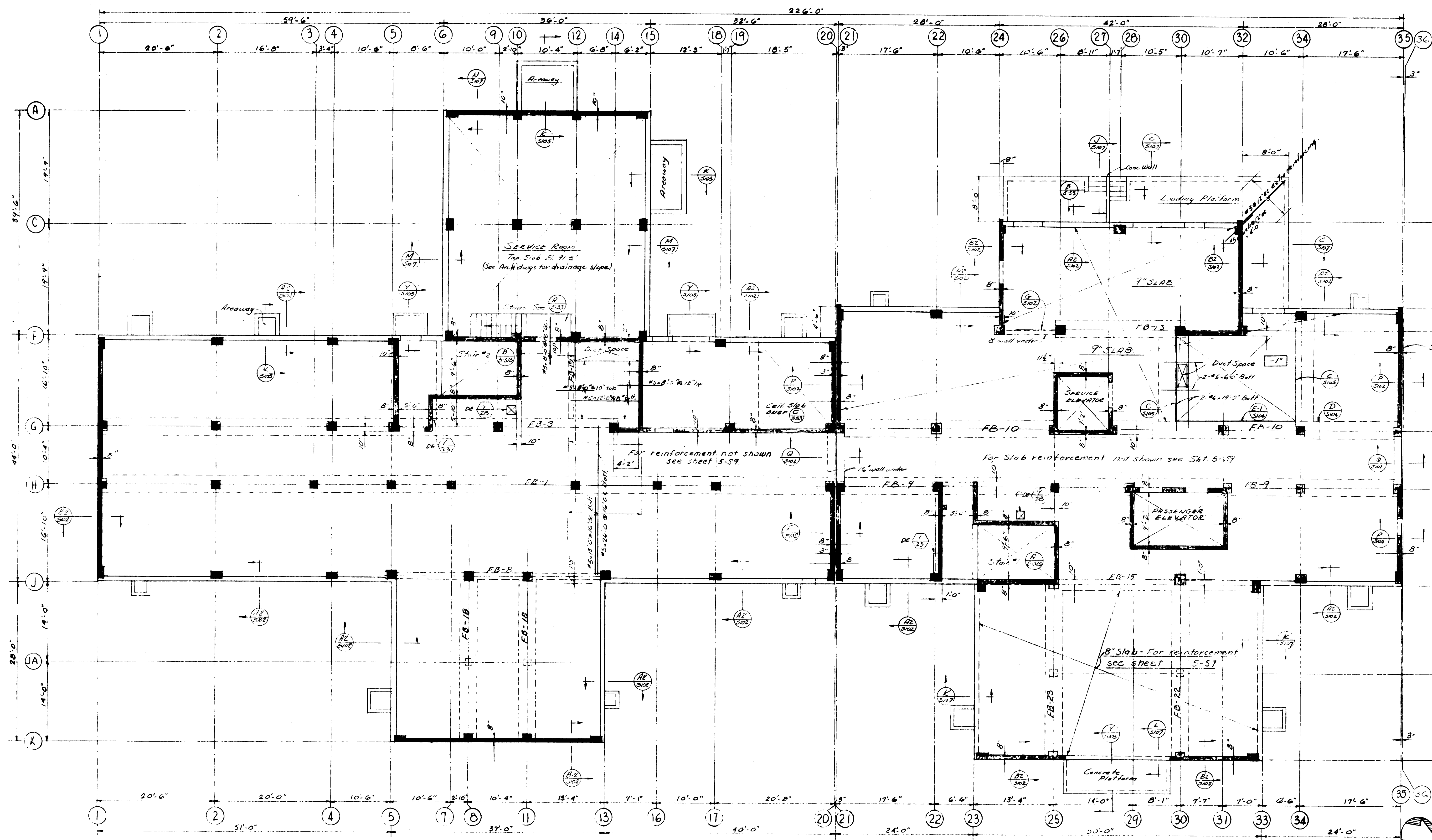
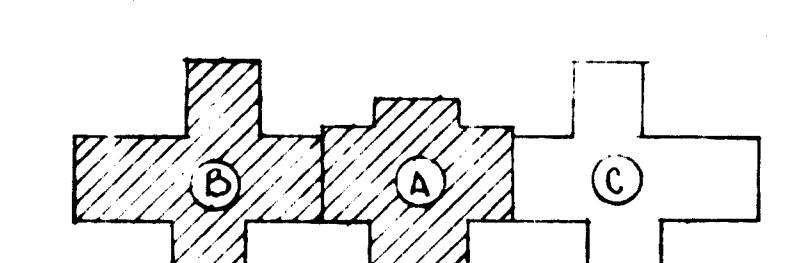
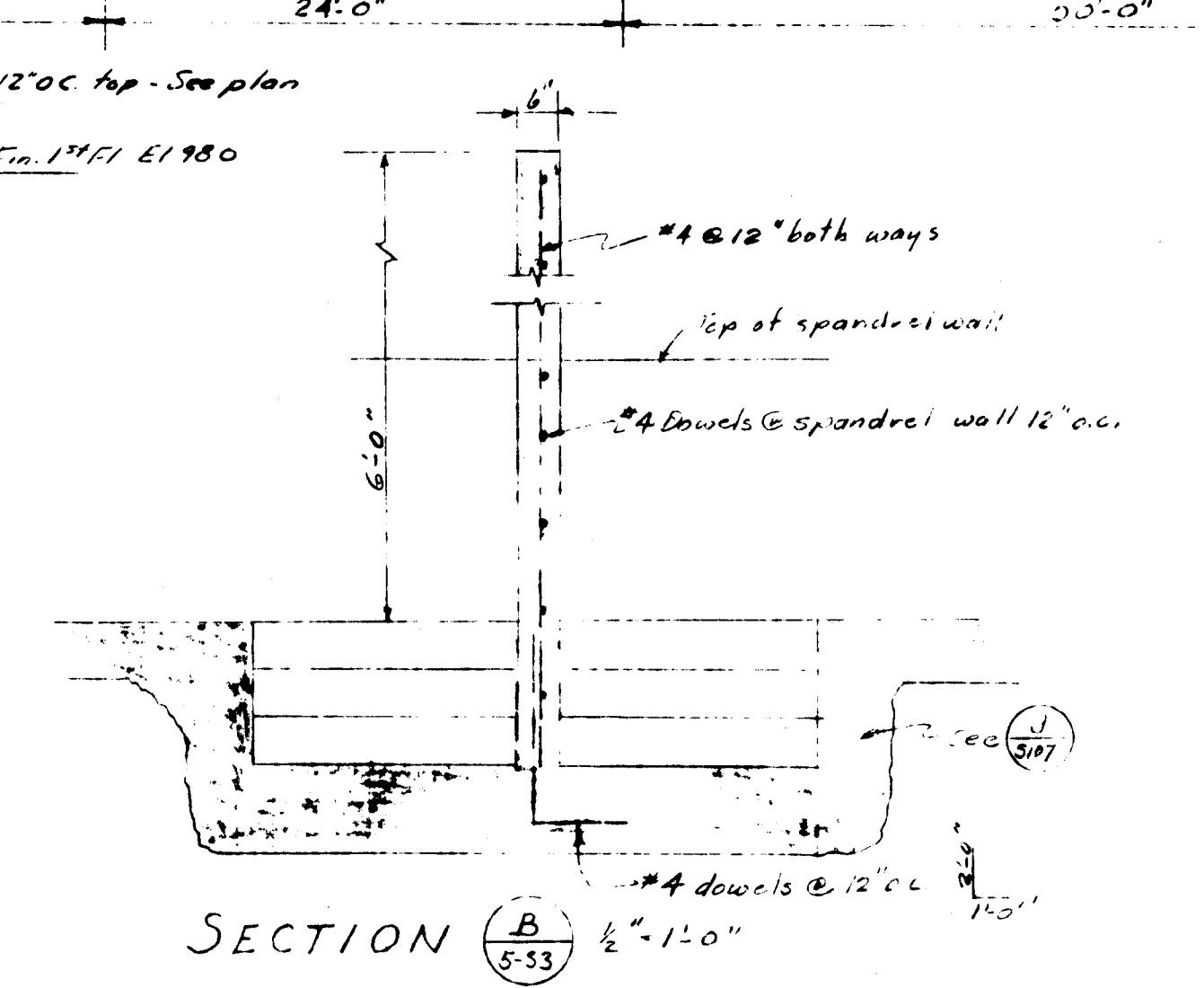
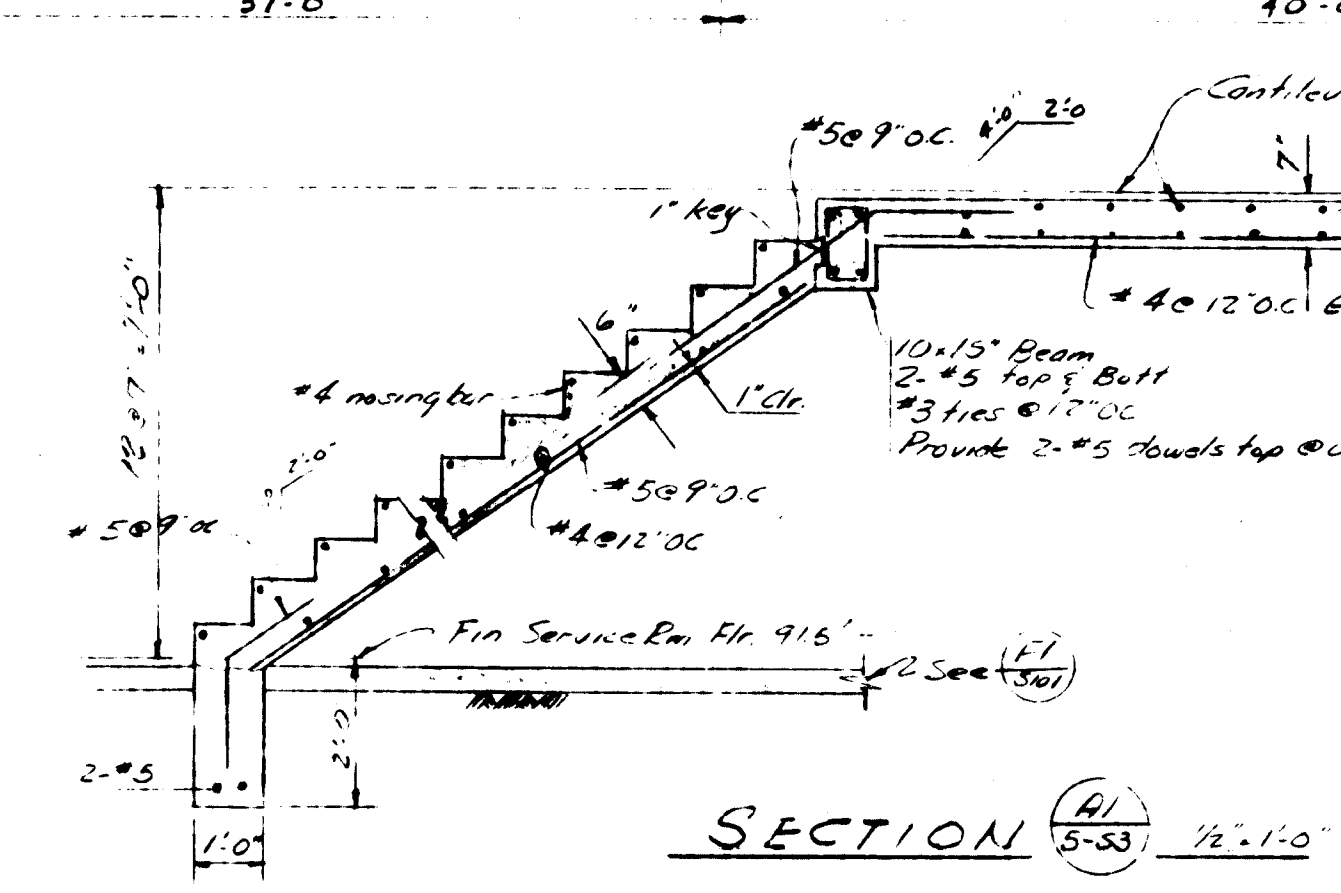
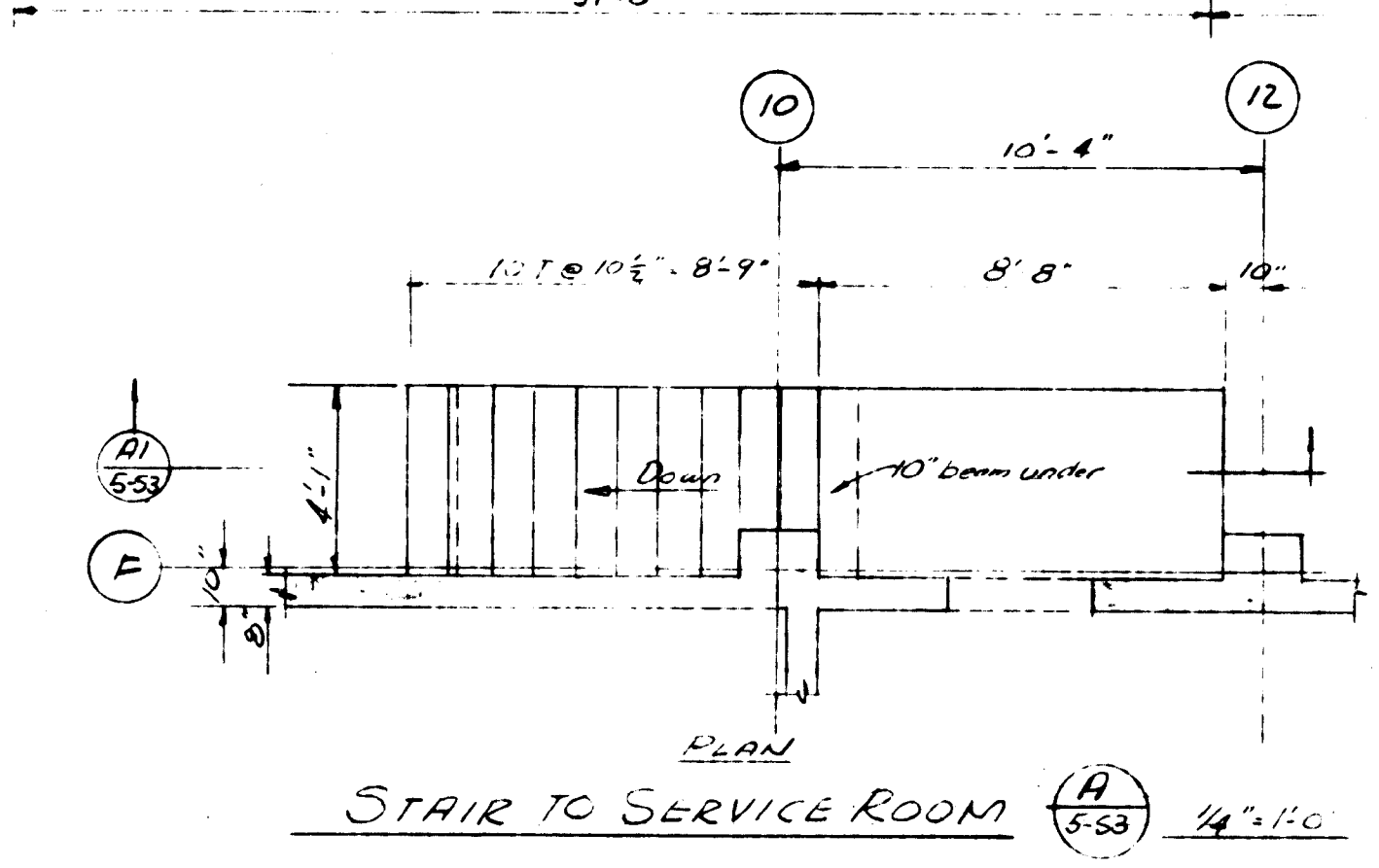
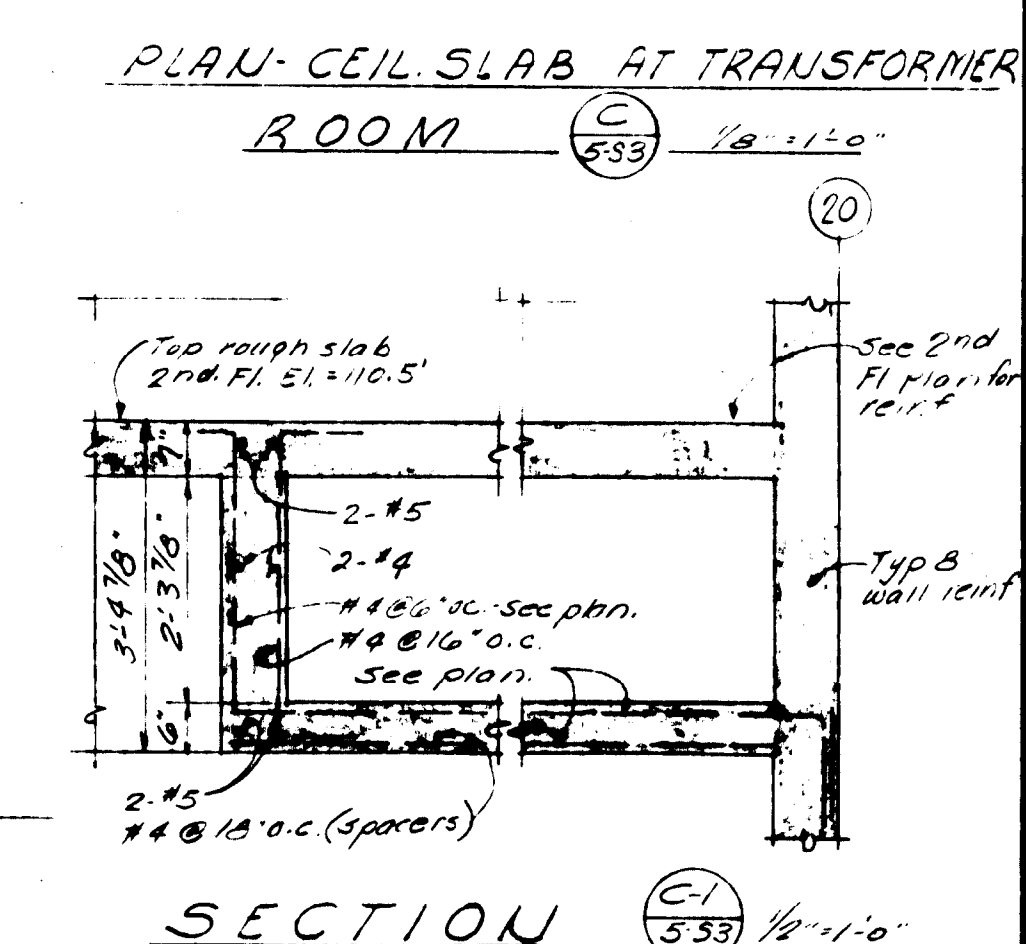
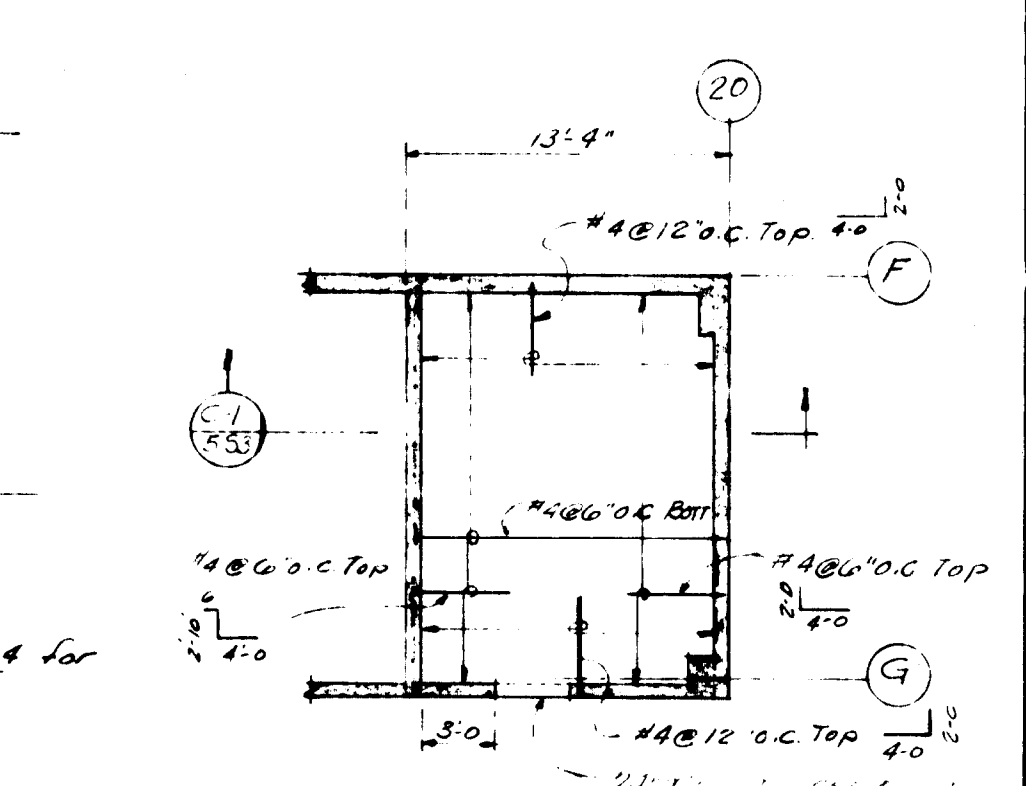


Building 5 Loading Dock Dimensions



- NOTES**
- Do not scale dimensions. Use given dimensions.
 - 1st floor finish floor elevation 780'. Top rough slab is 1" below finish floor.
 - Slab thickness is 7" unless noted. Depression depth is measured from rough slab. Indicated thus $\frac{3}{4}$ ".
 - See foundation plan for column schedule.
 - See sheet 5-S14 & 5-S14 for beam details.
 - For additional reinforcement perpendicular to main reinforcement see sections (A) & (B).

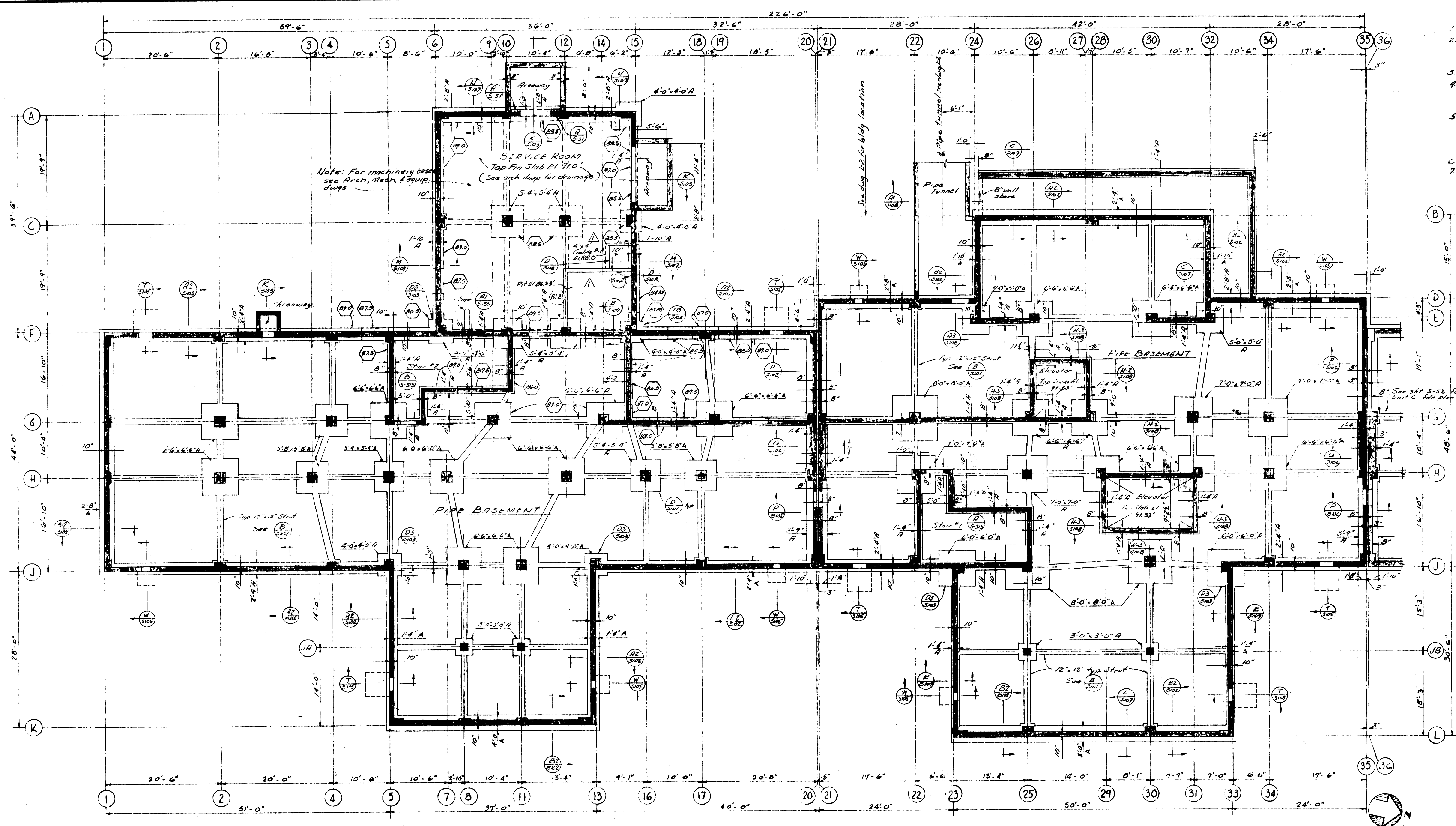


1-0-2-0182

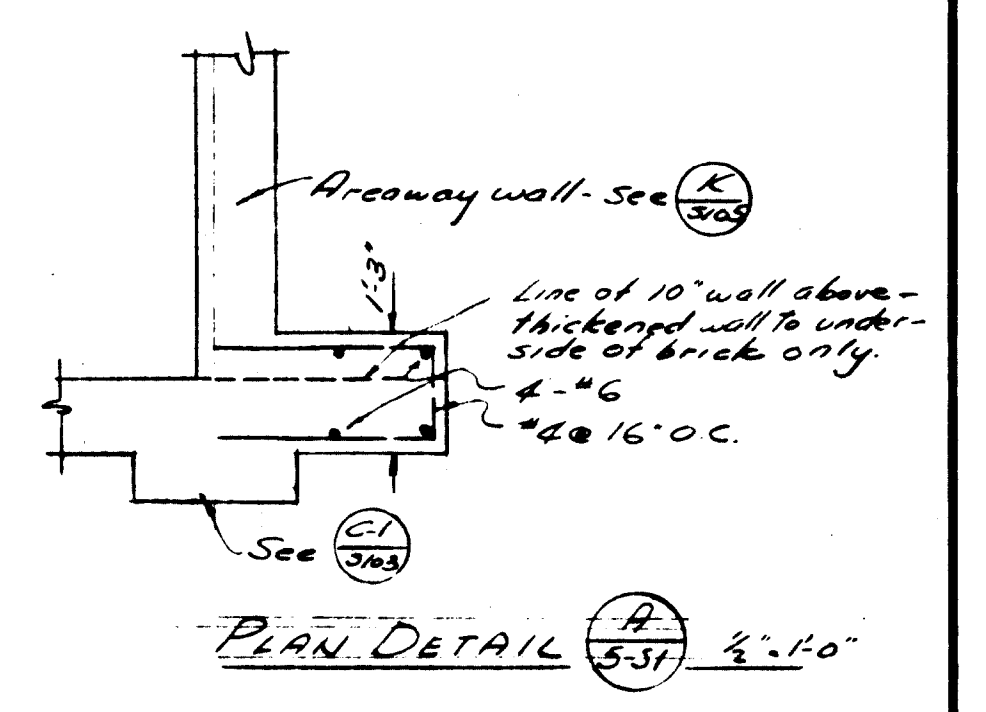


APPROVED
L. F. ROBINSON
DIRECTOR DESIGN SERVICE

FIRST FLOOR - UNITS A & B		
ADMISSION & TREATMENT BLDG. NO. 5		
1000 BED N. P. HOSPITAL		
VETERANS ADMINISTRATION		
PALO ALTO, CALIF.		
DRAWN: <i>WLB</i>	REVISED:	NUMBER:
CHECKED: <i>CM</i>		
DATE: 8-27-57		
WELTON BECKETT & ASSOCIATES ARCHITECTS & ENGINEERS 6857 WILSHIRE BLVD. LOS ANGELES 36, CALIF.		5-S3
L. F. ROBINSON STRUCTURAL ENGINEER 80 STONETOWN SAN FRANCISCO 27, CALIF.		SHEET 3 OF 15
PROJ. NO. 12-4076		



- NOTES**
- For General Notes- refer to dwg 5-101
 - A complete set of structural dwgs. for Bldg. 5 includes all of the following sheets 5-31 thru 5-35 and 5-101 thru 5-103
 - Do not scale dwgs. Use given dimensions
 - Dimensions are to face of concrete or to center line of columns unless noted.
 - Elevations unless noted on plan, a pipe basement Fin. Grd. 91.0' a Bottom of footings are 89.0' unless noted thus (89)
 - See Sht 5-101 for typical footing details
 - Machine bases are not shown See Mech & Equip. plans.



COLUMN IDENTIFICATION

	1	2	3	4	5	6	7	8	9	10	11	12	13	14	15	16	17	18	19	20	21	22	23	24	25	26	27	28	29	30	31	32	33	34	35
A	-	-	-	-	-	-	-	-	-	-	-	-	-	-	-	-	-	-	-	-	-	-	-	-	-	-	-	-	-	-	-	-	-	-	-
B	-	-	-	-	-	-	-	-	-	-	-	-	-	-	-	-	-	-	-	-	-	-	-	-	-	-	-	-	-	-	-	-	-	-	-
C	-	-	-	-	-	-	-	-	-	-	-	-	-	-	-	-	-	-	-	-	-	-	-	-	-	-	-	-	-	-	-	-	-	-	-
D	-	-	-	-	-	-	-	-	-	-	-	-	-	-	-	-	-	-	-	-	-	-	-	-	-	-	-	-	-	-	-	-	-	-	-
E	-	-	-	-	-	-	-	-	-	-	-	-	-	-	-	-	-	-	-	-	-	-	-	-	-	-	-	-	-	-	-	-	-	-	-
F	-	-	-	-	-	-	-	-	-	-	-	-	-	-	-	-	-	-	-	-	-	-	-	-	-	-	-	-	-	-	-	-	-	-	-
G	-	-	-	-	-	-	-	-	-	-	-	-	-	-	-	-	-	-	-	-	-	-	-	-	-	-	-	-	-	-	-	-	-	-	-
H	-	-	-	-	-	-	-	-	-	-	-	-	-	-	-	-	-	-	-	-	-	-	-	-	-	-	-	-	-	-	-	-	-	-	-
I	-	-	-	-	-	-	-	-	-	-	-	-	-	-	-	-	-	-	-	-	-	-	-	-	-	-	-	-	-	-	-	-	-	-	-
J	-	-	-	-	-	-	-	-	-	-	-	-	-	-	-	-	-	-	-	-	-	-	-	-	-	-	-	-	-	-	-	-	-	-	-
K	-	-	-	-	-	-	-	-	-	-	-	-	-	-	-	-	-	-	-	-	-	-	-	-	-	-	-	-	-	-	-	-	-	-	-
LA	-	-	-	-	-	-	-	-	-	-	-	-	-	-	-	-	-	-	-	-	-	-	-	-	-	-	-	-	-	-	-	-	-	-	-
L	-	-	-	-	-	-	-	-	-	-	-	-	-	-	-	-	-	-	-	-	-	-	-	-	-	-	-	-	-	-	-	-	-	-	-
LB	-	-	-	-	-	-	-	-	-	-	-	-	-	-	-	-	-	-	-	-	-	-	-	-	-	-	-	-	-	-	-	-	-	-	-

COLUMN SCHEDULE

COL NO	C-1	C-2	C-3	C-4	C-5	C-6	C-7	C-8	C-9	C-10	C-11	C-12	C-13	C-14	C-15	C-16	C-17	C-18	C-19	C-20	C-21	C-22	C-23	C-24	C-25	C-26	C-27
DETAIL	(A)	(A)	(A)	(A)	(A)	(A)	(A)	(A)	(A)	(A)	(A)	(A)	(A)	(A)	(A)	(A)	(A)	(A)	(A)	(A)	(A)	(A)	(A)	(A)	(A)	(A)	(A)
PH ROOF	14-24	14-24	14-24	14-24	14-24	14-24	14-24	14-24	14-24	14-24	14-24	14-24	14-24	14-24	14-24	14-24	14-24	14-24	14-24	14-24	14-24	14-24	14-24	14-24	14-24	14-24	14-24
PH FLOOR	14-24	14-24	14-24	14-24	14-24	14-24	14-24	14-24	14-24	14-24	14-24	14-24	14-24	14-24	14-24	14-24	14-24	14-24	14-24	14-24	14-24	14-24	14-24	14-24	14-24	14-24	14-24
FOURTH	14-24	14-24	14-24	14-24	14-24	14-24	14-24	14-24	14-24	14-24	14-24	14-24	14-24	14-24	14-24	14-24	14-24	14-24	14-24	14-24	14-24	14-24	14-24	14-24	14-24	14-24	14-24
THIRD	14-24	14-24	14-24	14-24	14-24	14-24	14-24	14-24	14-24	14-24	14-24	14-24	14-24	14-24	14-24	14-24	14-24	14-24	14-24	14-24	14-24	14-24	14-24	14-24	14-24	14-24	14-24
SECOND	14-24	14-24	14-24	14-24	14-24	14-24	14-24	14-24	14-24	14-24	14-24	14-24	14-24	14-24	14-24	14-24	14-24	14-24	14-24	14-24	14-24	14-24	14-24	14-24	14-24	14-24	14-24
FIRST	14-24	14-24	14-24	14-24	14-24	14-24	14-24	14-24	14-24	14-24	14-24	14-24	14-24	14-24	14-24	14-24	14-24	14-24	14-24	14-24	14-24	14-24	14-24	14-24	14-24	14-24	14-24
BLT.	14-24	14-24	14-24	14-24	14-24	14-24	14-24	14-24	14-24	14-24	14-24	14-24	14-24	14-24	14-24	14-24	14-24	14-24	14-24	14-24	14-24	14-24	14-24	14-24	14-24	14-24	14-24

FOUNDATION PLAN - UNITS A & B

ADMISSION & TREATMENT BLDG. NO. 5

1000 BED N.P. HOSPITAL

VETERANS ADMINISTRATION

PALO ALTO, CALIF.

1-0-2-0180

APPROVED

REVISION

NUMBER

5-SI

WELTON BECKETT & ASSOCIATES

ARCHITECTS & ENGINEERS

8807 WILSON BLVD. LOS ANGELES 36, CALIF.

L. F. ROBINSON

STRUCTURAL ENGINEER

80 STONETOWN SAN FRANCISCO 27, CALIF.

PROJ. NO. 12-4076

AS BUILT