






- 1 REMOVE THE ASPHALT PAVEMENT REPAIR IN CIRCLE DRIVE, APPROXIMATELY 6,265 SF.
- 2 ALL LANDSCAPE WORK IN PROJECT INCLUDING PLANTINGS, SOIL COVERINGS, SPRINKLERS, SEATING WALLS, AND BIKE RACKS AND IRON FENCING.
- 3 DEDUCT INTERIOR NON LOAD BEARING WALLS AND DOORS IN VISO OFFICES, APPROXIMATELY 1923 SF THE SUITE PERIMETER WALL WILL BE BUILT AS INDICATED IN THE DRAWING.
- 4 DEDUCT INTERIOR NON LOAD BEARING WALLS AND DOORS IN EE OFFICES, APPROXIMATELY 650 SF THE SUITE PERIMETER WALL AND DEDUCT INTERIOR NON LOAD BEARING WALLS AND DOORS IN MHV OFFICES, APPROXIMATELY 772 SF. THE SUITES PERIMETER WALL WILL BE BUILT AS INDICATED IN THE DRAWING.
- 5 NO WORK TO BE PERFORMED IN THE AREA MARKED BETWEEN COLUMN LINES 109 AND 112. APPROXIMATELY 970 SF. EEO AND OFFICES WILL REMAIN IN PRESENT CONDITIONS.
- 6 NO WORK TO BE PERFORMED IN THE AREA MARKED BETWEEN COLUMN LINES 105 AND 108. APPROXIMATELY 2660 SF. CHAFAIN SERVICES AREA WILL REMAIN IN PRESENT CONDITIONS.

- 1 THE CAFE LAYOUT AND LOCATION OF EQUIPMENT WAS PREPARED TO ESTABLISH THE GENERAL CONSTRUCTION REQUIREMENTS FOR THE SPACE. COORDINATE FINAL LOCATION WITH COR AND CANTEN VENDOR.
- 2 THIS CAFE WILL BE MANAGED BY AN INDEPENDENT GOVERNMENT VENDOR. THE VENDOR PROVIDED A EQUIPMENT LIST AND COUNTER LAYOUT AS INDICATED ON A402.
- 3 CLEANSING ROOM LAYOUT IS PRELIMINARY AND SUBJECT TO CHAPLAIN APPROVAL INCLUDING APPROVAL OF PLUMBING FIXTURES.
- 4 PROVIDE ACCESS PANEL AT PIPING CHASE

	(E) WALL, (SHOWN AS GRAY SCALE)
	(N) WALL, (SHOWN AS BLACK SCALE)
	SOUND RATED PARTITION
	1HR FIRE RESISTIVE

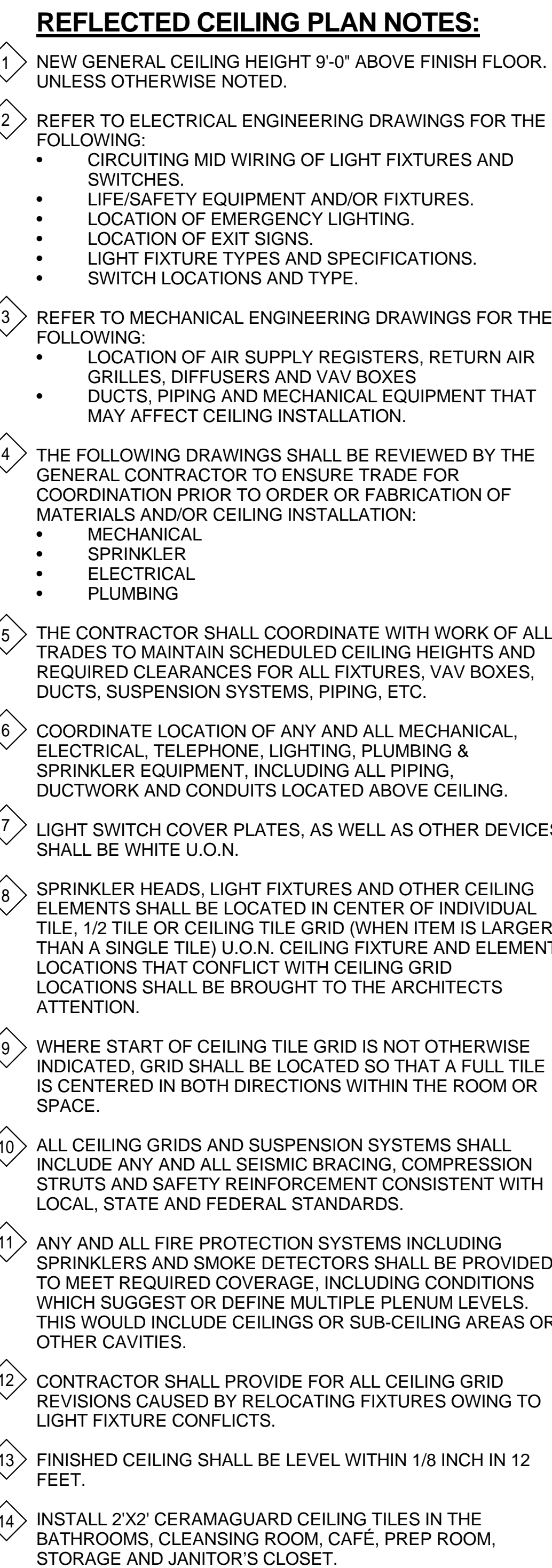
FATHER CA R SEISMIC VISION	Project Number: 612-126	<div> Office of Facilities </div> <div> Maximum </div> <div> Office of Facilities </div> <div> Maximum </div>
	Building Number: B650	
FATHER, CA	Drawing Number: A102	
Drawn J. AGUIRRE	Dwg. of	

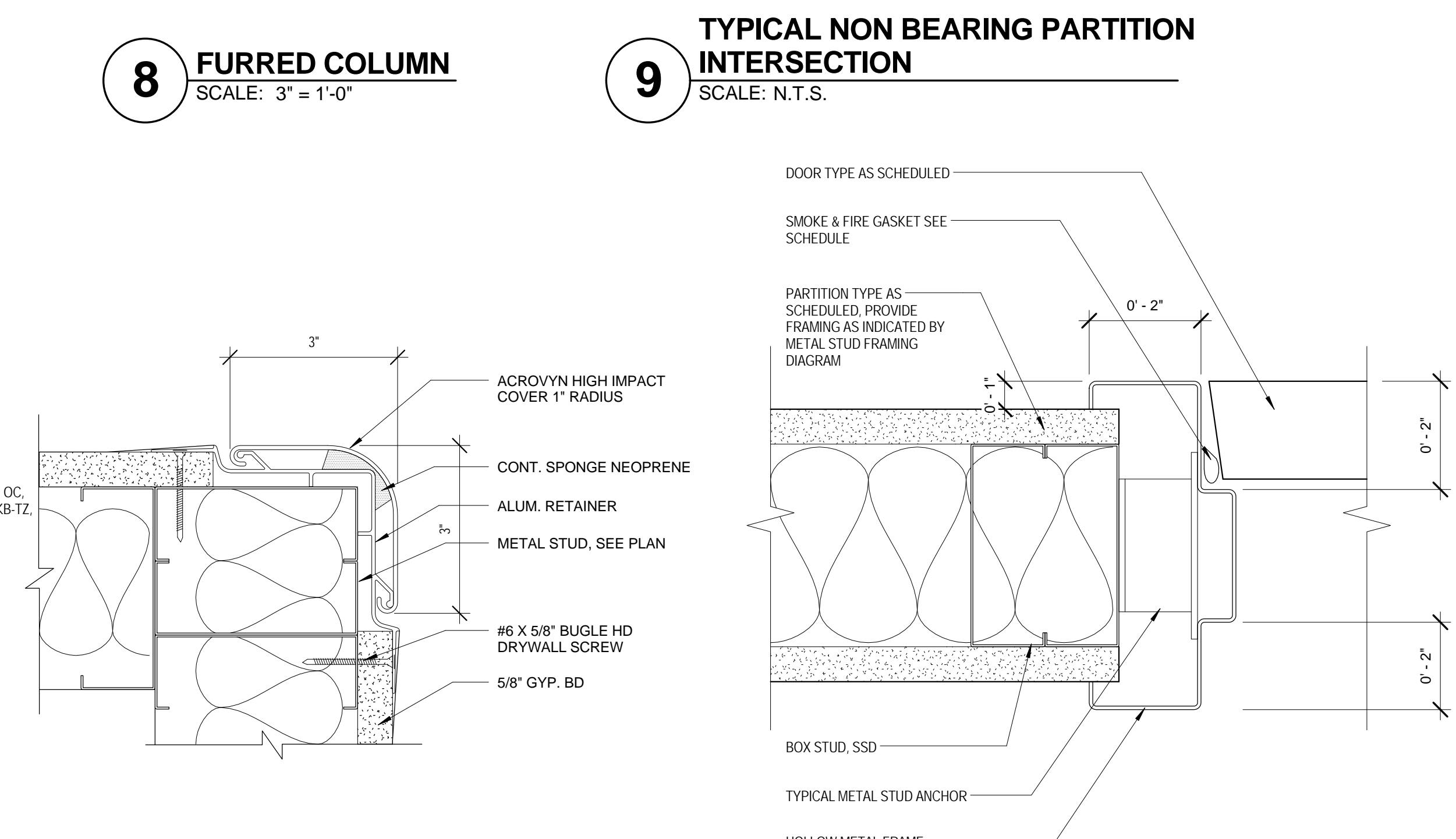
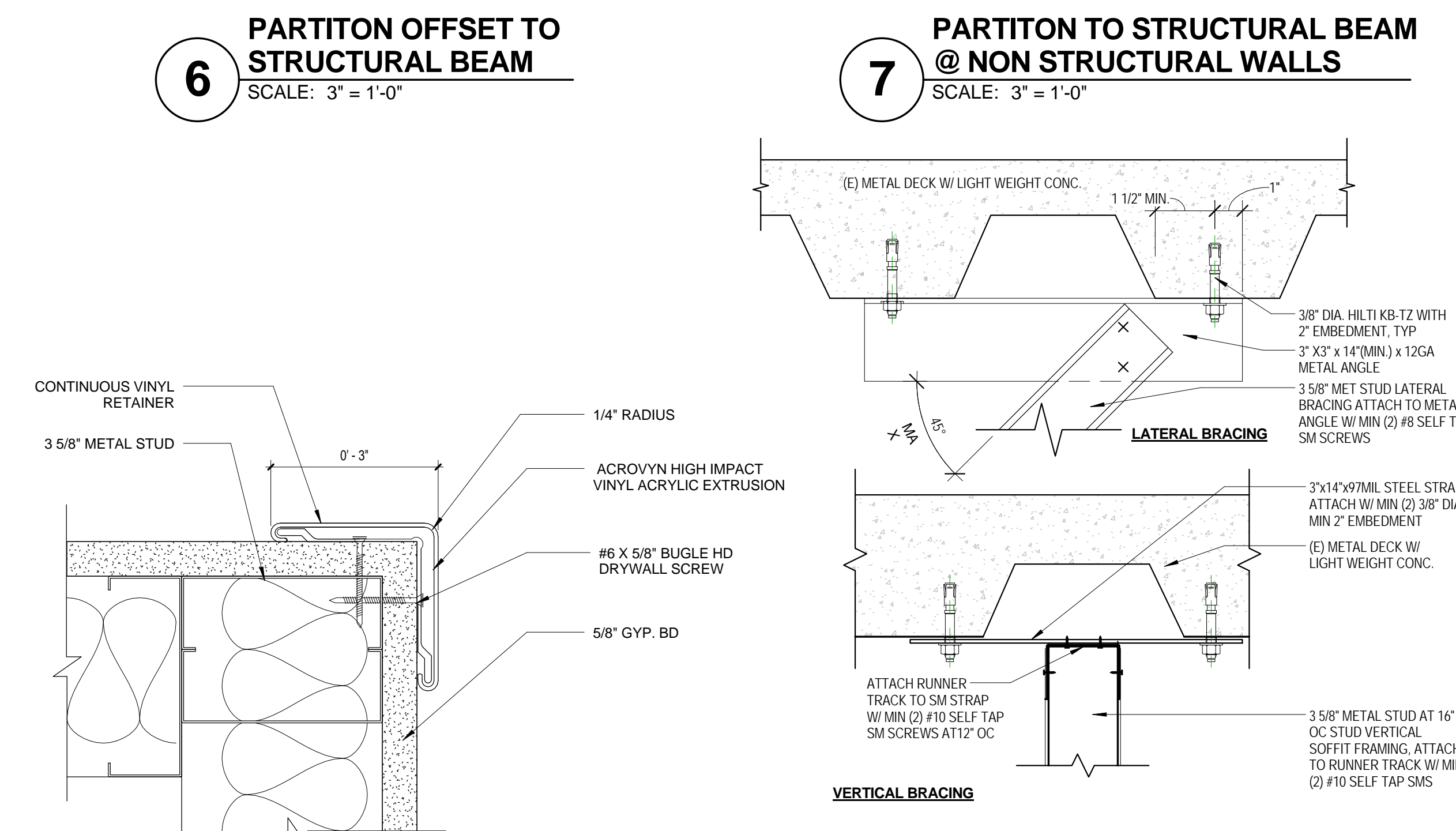
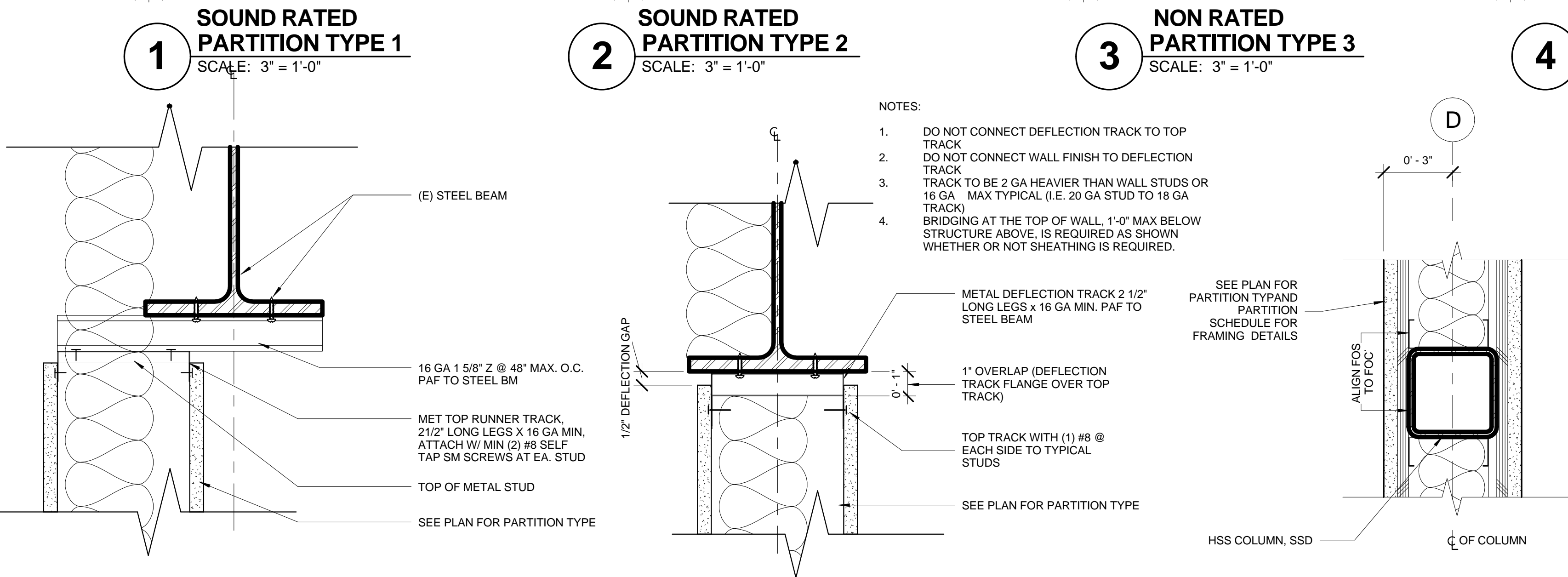
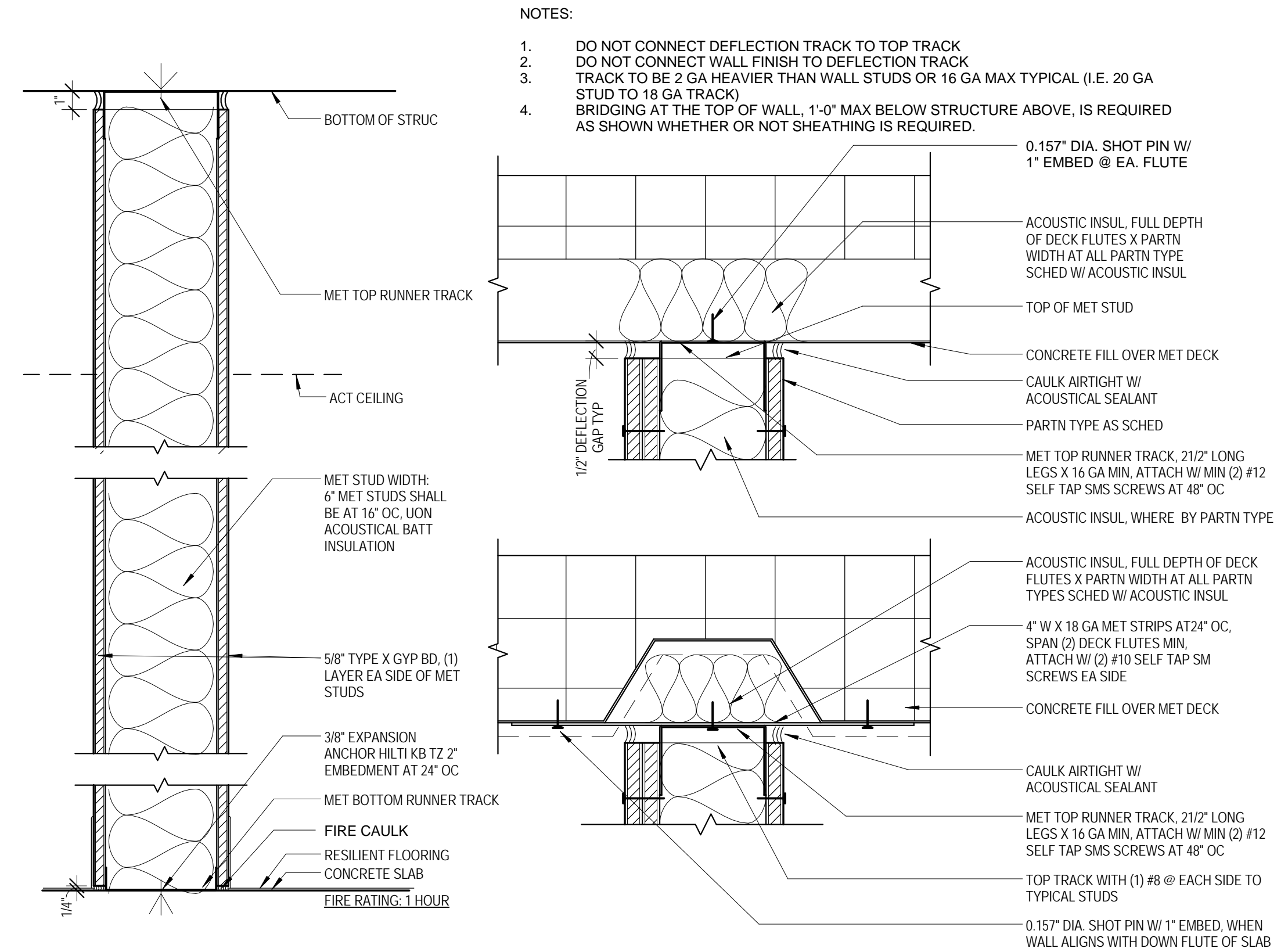
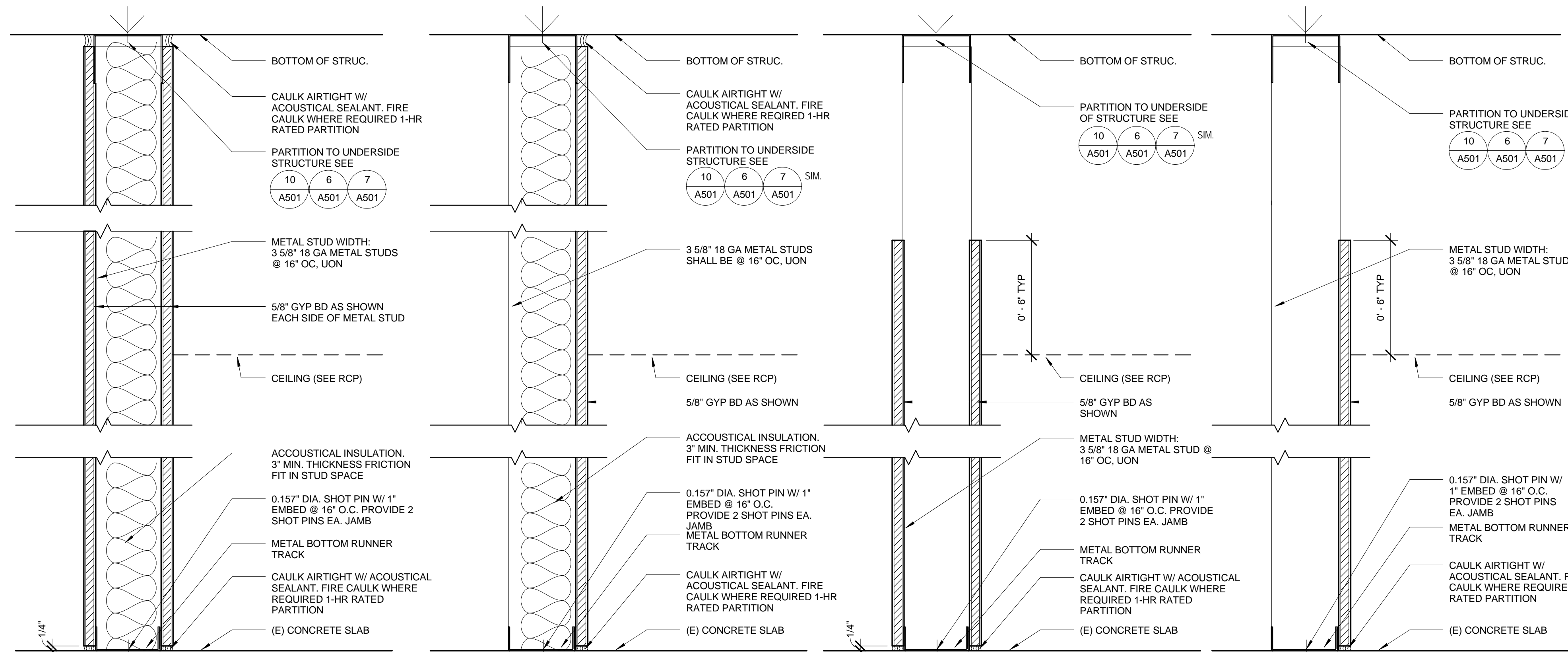


Department of
Veterans Affairs

 NORTH

CONSULTANTS:	KEY PLAN 	STAMP 	ARCHITECT/ENGINEERS:  ADVANCE DESIGN CONSULTANTS, INC. 988 PARK AVENUE SAN JOSE CALIFORNIA 95128 P: (408) 287-1881 F: (408) 294-3186 www.adcengineers.com	Drawing Title: PARTIAL FIRST FLOOR PROPOSED PLAN		Project Title: VA MEDICAL CENTER, MATHER CA BUILDING 650, 1ST FLOOR SEISMIC RENOVATION AND EXPANSION		Project Number: 612-126		Office of Facilities Management  Department of Veterans Affairs
				Approved: Project Director		Building Number: B650		Drawing Number: A102		
ONE-YEAR WET SIGNED DOCUMENTS CONSTITUTE ADVANCE DESIGN CONSULTANTS, INC. PROFESSIONAL WORK AND RECALCULATE OTHER REPRODUCIBLE DOCUMENTS MAY BE EASILY VALUED WITHOUT THE CONSENT OF ADVANCE DESIGN CONSULTANTS, INC. THE WET SIGNED DOCUMENTS MUST BE REFERRED TO FOR THE ORIGINAL AND CORRECT INFORMATION. IF THERE ARE ANY DIFFERENCES BETWEEN THE WET SIGNED DOCUMENTS AND ANY OTHER DOCUMENTS, THE WET SIGNED DOCUMENTS SHALL GOVERN. ADVANCE DESIGN CONSULTANTS, INC. IS NOT RESPONSIBLE FOR ANY MODIFICATIONS MADE TO OUR DOCUMENTS BY ANYONE OTHER THAN AUTHORIZED REPRESENTATIVES OF ADVANCE DESIGN CONSULTANTS, INC.				Date: 12/23/14		Checked: J.MORELAN		Drawn: J.AGUIRRE		Dwg. of

 NORTH Department of



NOTES:

- DO NOT CONNECT DEFLECTION TRACK TO TOP TRACK
- DO NOT CONNECT WALL FINISH TO DEFLECTION TRACK
- STUD TO BE 2 GA HEAVIER THAN WALL STUDS OR 16 GA MAX TYPICAL (I.E. 20 GA STUD TO 18 GA TRACK)
- BRIDGING AT THE TOP OF WALL, 1'-0" MAX BELOW STRUCTURE ABOVE, IS REQUIRED AS SHOWN WHETHER OR NOT SHEATHING IS REQUIRED.

0.157" DIA. SHOT PIN W/ 1" EMBED @ EA. FLUTE

ACoustic INSUL. FULL DEPTH OF DECK FLUTES X PARTN. WIDTH AT ALL PARTN TYPE SCHED W/ ACoustic INSUL.

TOP OF MET STUD

CONCRETE FILL OVER MET DECK

CAULK AIRTIGHT W/ ACoustic SEALANT

PARTN TYPE AS SCHED

MET TOP RUNNER TRACK, 21/2" LONG, LESS X 16 GA MIN. ATTACH W/ MIN (2) #12 SELF TAP SMS SCREWS AT 48" OC

ACoustic INSUL. WHERE BY PARTN TYPE

ACoustic INSUL. FULL DEPTH OF DECK FLUTES X PARTN WIDTH AT ALL PARTN TYPES SCHED W/ ACoustic INSUL.

4" X 16 GA METAL STRIPS AT 24" OC, SPAN (2) DECK FLUTES MIN. ATTACH W/ (2) #10 SELF TAP SMS SCREWS EA. SIDE

CONCRETE FILL OVER MET DECK

CAULK AIRTIGHT W/ ACoustic SEALANT

MET TOP RUNNER TRACK, 21/2" LONG, LESS X 16 GA MIN. ATTACH W/ MIN (2) #12 SELF TAP SMS SCREWS AT 48" OC

TOP TRACK WITH (1) #8 @ EACH SIDE TO TYPICAL STUDS

0.157" DIA. SHOT PIN W/ 1" EMBED, WHEN WALL ALIGNS WITH DOWN FLUTE OF SLAB METAL STRIPS MAY BE ELIMINATED AND TRACK SHOT TO DECK @ 12" O.C.

FIRE RATING: 1-HOUR

THESE REQUIREMENTS PERTAIN TO NON-LOAD-BEARING INTERIOR PARTITIONS ONLY. SEE THE EXTERIOR WALL DETAILS FOR EXTERIOR WALL ASSEMBLIES.

1. PARTITION REFERENCE SYMBOL DEFINITION

PARTITION TYPE NUMBER

LETTER INDICATES HEAD CONFIGURATION SEE CONFIGURATION TYPES BELOW

NUMBER INDICATES STUD SIZE:
1 = 1-5/8"
2 = 2-1/2"
3 = 3-5/8"
4 = 4"
6 = 6"
8 = 8"

THE CONTRACTOR SHALL SELECT THE APPROPRIATE HEAD, SILL, OR OTHER PARTITION INTERFACE ASSEMBLY FROM THE TYPICAL DETAILS ON SHEET A-1 TO INSTALL TO FIT THE VARIOUS CONFIGURATIONS FOUND ON THE PROJECT.

PARTITION TYPES INDICATED ON THE PLANS CONTINUE TO ANY CORNERS OR INTERSECTING PARTITIONS ON THE SIDE INDICATED. PARTITION TYPES ABOVE OR BELOW OPENINGS SHALL BE THE SAME AS EITHER SIDE OF THE OPENING.

ALIGN DIFFERENT PARTITION TYPES AS REQUIRED FOR A CONTINUOUS FINISH SURFACE.

REFER TO THE FINISH SCHEDULE AND INTERIOR ELEVATIONS FOR PARTITION FINISHES, WALL COVERINGS, PANELS, AND TRIM.

2. PARTITION FRAMING AND BACKING REQUIREMENTS

PARTITIONS SHALL BE FRAMED WITH 3-5/8 INCH DEEP, 20 GAUGE MATERIAL, UNLESS OTHERWISE NOTED. SEE STUDS SHALL HAVE A MINIMUM FLANGE WIDTH OF 1 1/4 INCHES UNLESS OTHERWISE NOTED.

ASSEMBLY LIGHT GAUGE FRAMING AND COORDINATE BACKING SUPPORT INSTALLATION NECESSARY FOR ANCHORING FIXTURES, FURNISHINGS, AND EQUIPMENT PROVIDED BY ALL TRADES PER THE TYPICAL REQUIREMENTS ON SHEET A88.18 & A88.19 FOR TYPICAL PARTITION ASSEMBLY DETAILS.

3. FIRE RATING REFERENCE SYMBOL

PARTITIONS INDICATED ON THE FLOOR PLANS AS FIRE-RESISTIVE ASSEMBLIES PER THE SYMBOLS BELOW SHALL BE CONSTRUCTED AS REQUIRED BY THE TESTED ASSEMBLY DESCRIPTION. FIRE-STOPPING OF THE PARTITION HEAD, OPENINGS, AND PENETRATIONS SHALL BE INSTALLED AS REQUIRED FOR THE REFERENCED TESTED ASSEMBLY DESCRIPTION. SEE SHEETS A88.18 & A88.19 FOR TYPICAL PARTITION ASSEMBLY DETAILS.

NON-RATED PARTITION ASSEMBLY (NO OPENING PROTECTION / FIRE-STOPPING REQUIRED)

1-HOUR FIRE-RESISTIVE PARTITION ASSEMBLY (OPENING PROTECTION AS SCHEDULED IN THE OPENING SCHEDULE)

FIRE-STOPPING IS REQUIRED AT RATED PARTITIONS WHERE THE PARTITION JAMB INTERFACES WITH DISSIMILAR MATERIALS. FIRESTOPPING IS NOT REQUIRED AT THE BASESILL OF RATED PARTITIONS.

FIRE-STOPPING IS REQUIRED FOR ALL PARTIAL OR THROUGH-PENETRATIONS WHEN OPENING PROTECTION IS REQUIRED. RECESSED EQUIPMENT, ACCESSORIES, AND HARDWARE ITEMS SHALL NOT BREAK THE INTEGRITY OF THE FIRE MEMBRANE (GYPSUM BOARD). REFER TO THE TYPICAL ASSEMBLY DETAILS FOR SPECIFIC REQUIREMENTS.

WHERE A PARTITION MUST COMPLY WITH BOTH FIRE-RESISTIVE AND ACoustICAL REQUIREMENTS, FIRE-STOPPING SHALL BE PROVIDED IN LIEU OF ACoustICAL SEALANT.

4. GYPSUM BOARD

FURNISH GYPSUM BOARD PRODUCTS IN COMPLIANCE WITH REQUIREMENTS OF THE SPECIFICATION. SUBSTITUTE MOISTURE-RESISTANT GYPSUM BOARD AT PAINTED FINISHES IN TOILET ROOMS AND JANITOR CLOSET WALLS. SUBSTITUTE TILE BACKER BOARD AT TILE FINISHED WALLS. PROVIDE TYPE "X" FIRE-RESISTANT VERSIONS OF GYPSUM BOARD PRODUCTS AT PARTITIONS INDICATED ON DRAWINGS AS FIRE-RESISTIVE.

INSTALL GYPSUM BOARD WITH NO. 6 TYPE SCREWS SPACED 12 INCHES ON CENTER MINIMUM AT STUDS.

5. ACoustICAL AND THERMAL TREATMENT

ALL PARTITIONS THAT ARE INDICATED "ACoustic" SHALL BE CONSIDERED "ACoustic PARTITIONS" AND SHALL HAVE ACoustICAL SEALANT AT ALL HEAD, SILL, AND JAMB TRANSITIONS, AS WELL AS ANY PENETRATIONS THROUGH THE GYPSUM BOARD MEMBRANE (FIRE ACoustICAL REQUIREMENTS SUPERSEDE ACoustICAL SEALANT).

INSTALL PUTTY PADS AT ALL OUTLET AND JUNCTION BOXES IN ACoustic PARTITIONS, WHERE ANY TWO JUNCTION BOXES ARE SEPARATED BY LESS THAN 10". PROVIDE 5-SIDE WRAP GYPSUM BOARD ON ONE OF THE OUTLET BOXES IN ADDITION TO THE OUTLET BOX PUTTY PAD.

INSTALL 5-1/2 INCH SOUND ATTENUATION BLANKET/BATT INSULATION AT 6-INCH SIZE OR DEEPER METAL STUDS WHERE INSULATION IS SCHEDULED.

INSTALL 3-1/2 INCH SOUND ATTENUATION BLANKET/BATT INSULATION AT 3-5/8-INCH SIZE OR SHALLOWER METAL STUDS WHERE INSULATION IS SCHEDULED.

INSTALL 3-1/2 INCH THERMAL BATT INSULATION AT INTERIOR FURRING OF EXTERIOR WALLS.

PROVIDE ACoustICAL PUTTY AT RECESSED TOILET ROOM ACCESSORIES IN ACoustic RATED PARTITIONS IN TOILET ROOMS.

6. WALL FINISHES

PARTITION TYPES DO NOT INDICATE FINAL FINISH. SEE FINISH PLANS FOR APPLIED FINISH INCLUDING PAINT, TILE, ADDITIONAL LAYERS OF GYPSUM BOARD, WOOD BASE AND WOOD PANELING.

ISSUE FOR BID	
FINAL ISSUE FOR BID (13-327)	4/28/16
ISSUE PER RFI 005 (13-324)	11/30/15
ISSUE FOR BID (13-311)	12/23/14
FINAL CONSTRUCTION DOCUMENTS (13-304)	9/19/14
100% CONSTRUCTION DOCUMENTS (13-289)	7/17/14
75% CONSTRUCTION DOCUMENTS (13-285)	6/27/14
100% DESIGN DEVELOPMENT (13-266)	3/28/14
100% SCHEMATIC DESIGN (13-237)	1/20/14
50% SCHEMATIC DESIGN (13-227)	12/20/13
PROGRESS REPORT	11/12/13
Revisions:	Date

CONSULTANTS:	KEY PLAN	STAMP	ARCHITECT/ENGINEERS: ADVANCE DESIGN CONSULTANTS, INC. 998 PARK AVENUE SAN JOSE CALIFORNIA 95126 P: (408) 287-1881 F: (408)294-3186 www.adcengineers.com <small>PDF 13-308-09</small>	Drawing Title: DETAILS - INTERIOR PARTITION TYPES Approved: Project Director	Project Title: VA MEDICAL CENTER, MATHER CA BUILDING 650, 1ST FLOOR SEISMIC RENOVATION AND EXPANSION Location: 10355 HOSPITAL WAY, MATHER, CA Date: 12/23/14 Checked: J.MORELAN Drawn: Author Project Number: 612-126 Building Number: B650 Drawing Number: A501 Dwg. of	Office of Facilities Management
---------------------	-----------------	--------------	--	---	---	--