

A

1

2

3

4

5

6

7

8

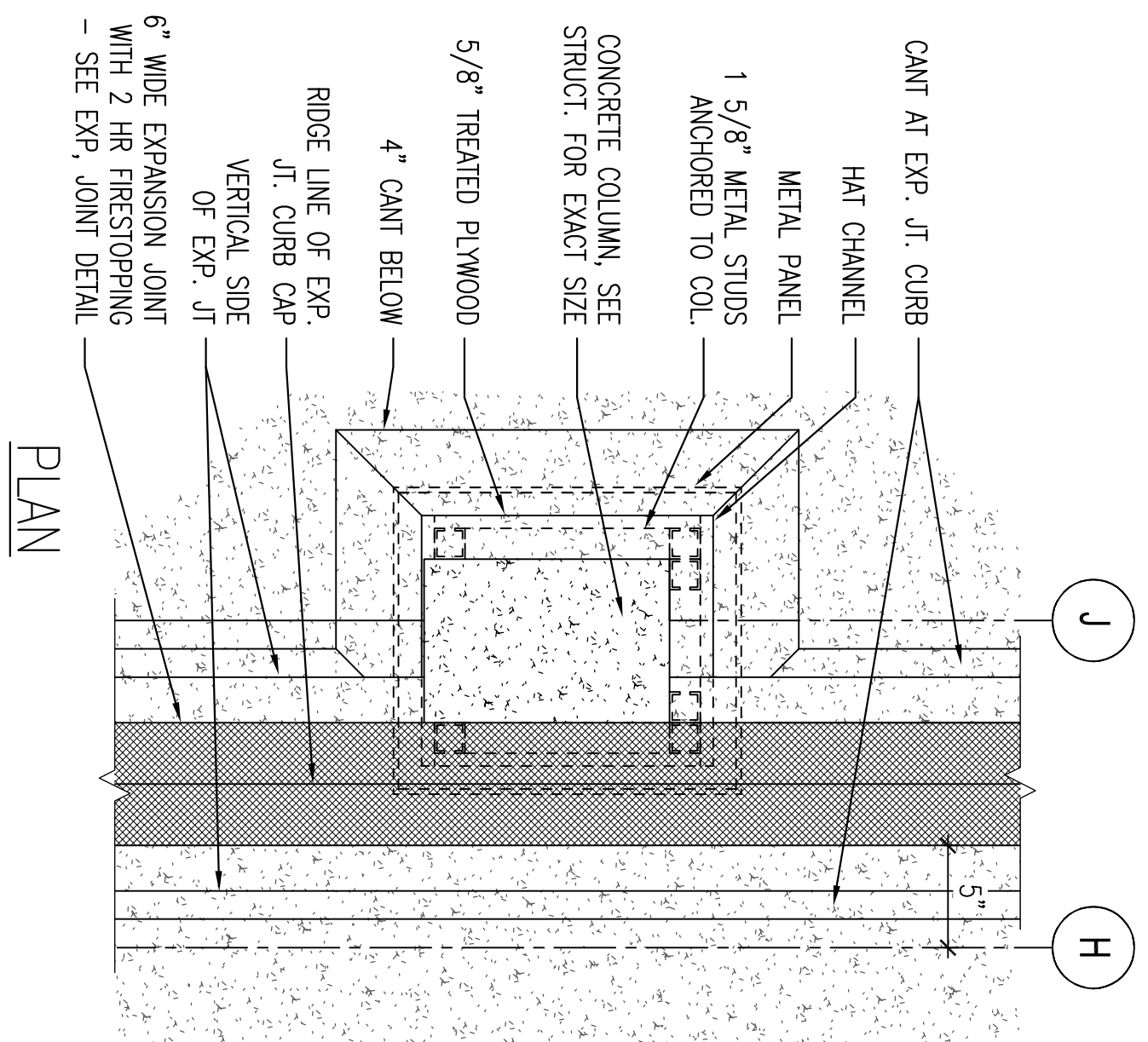
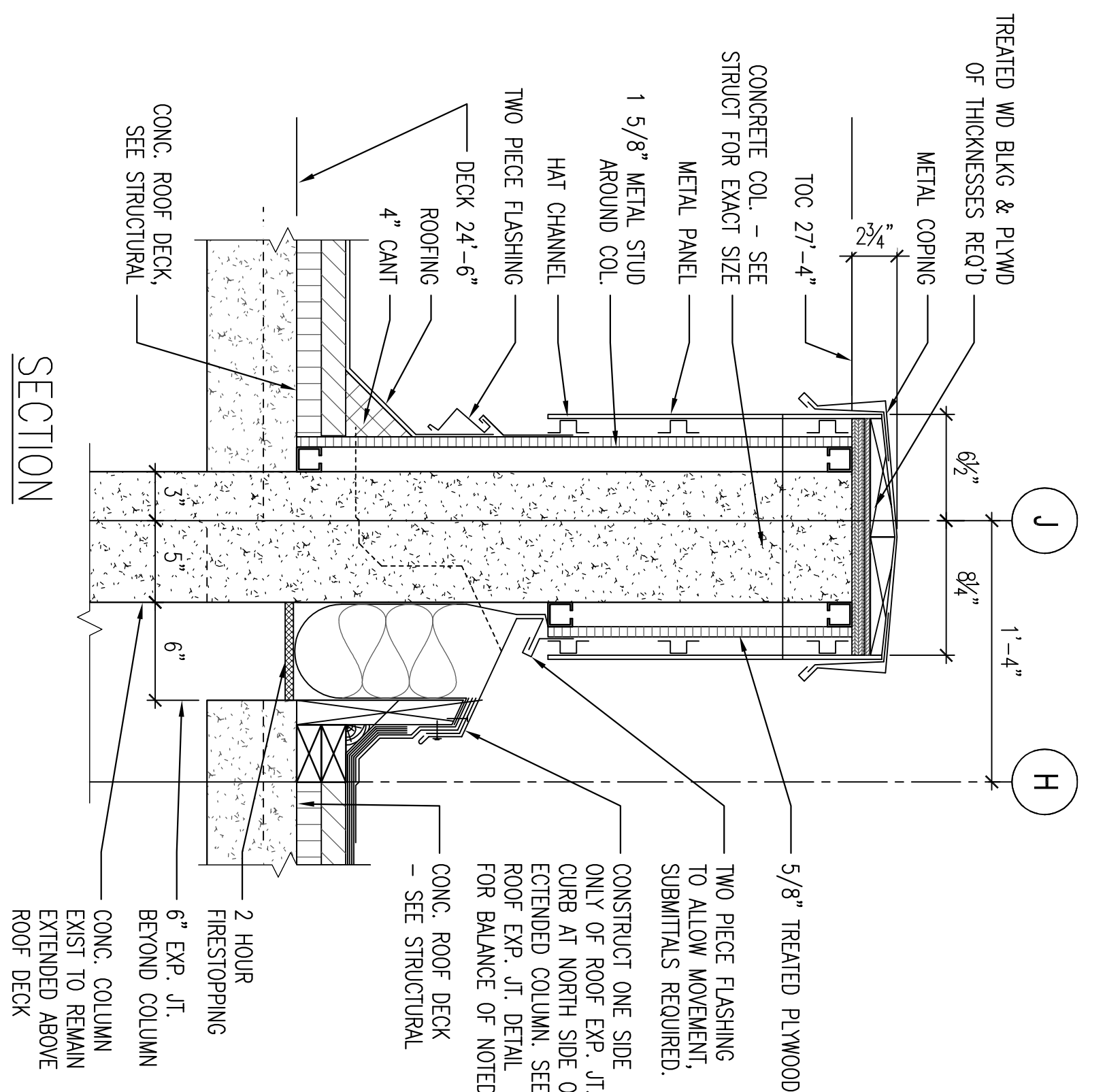
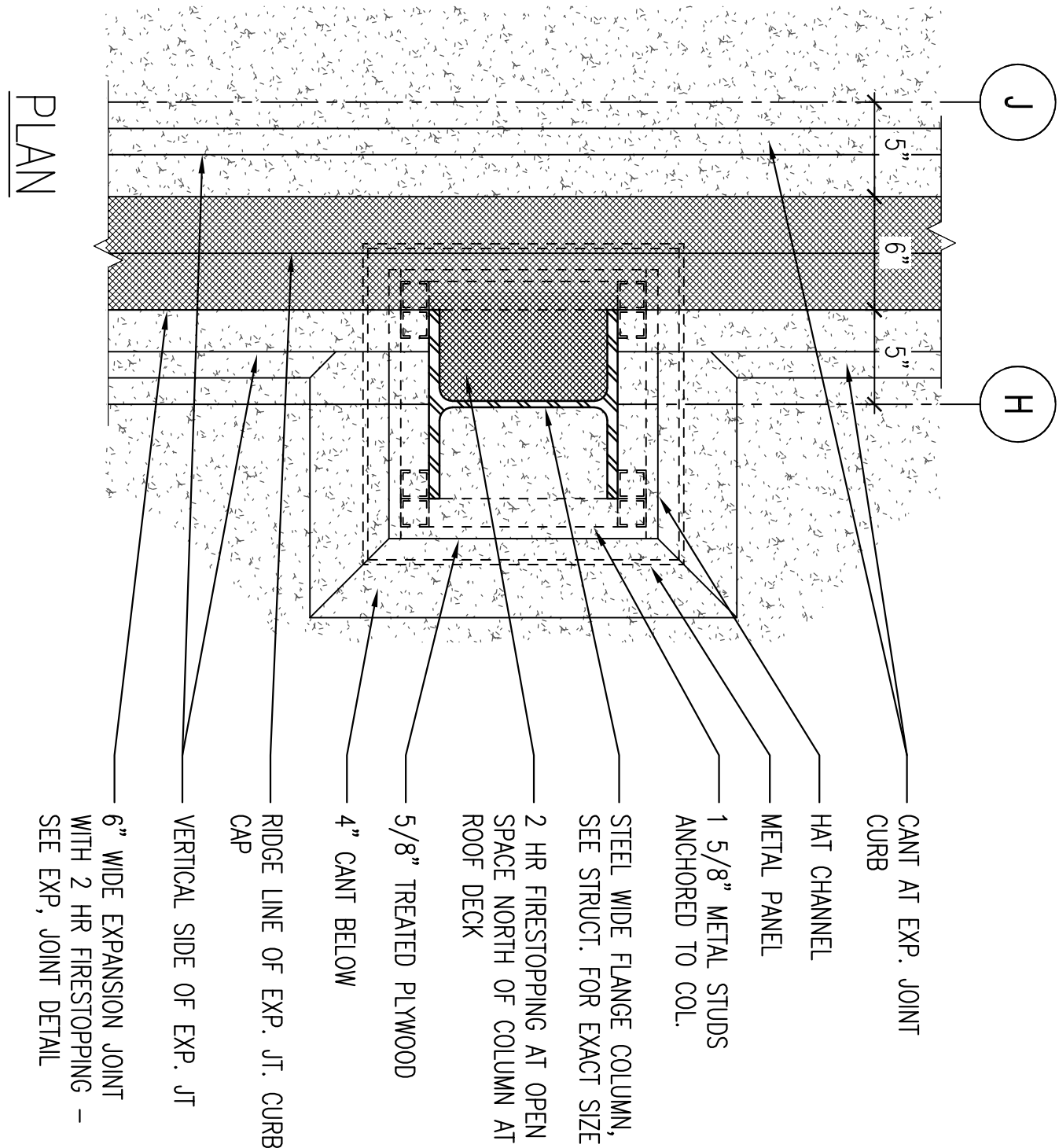
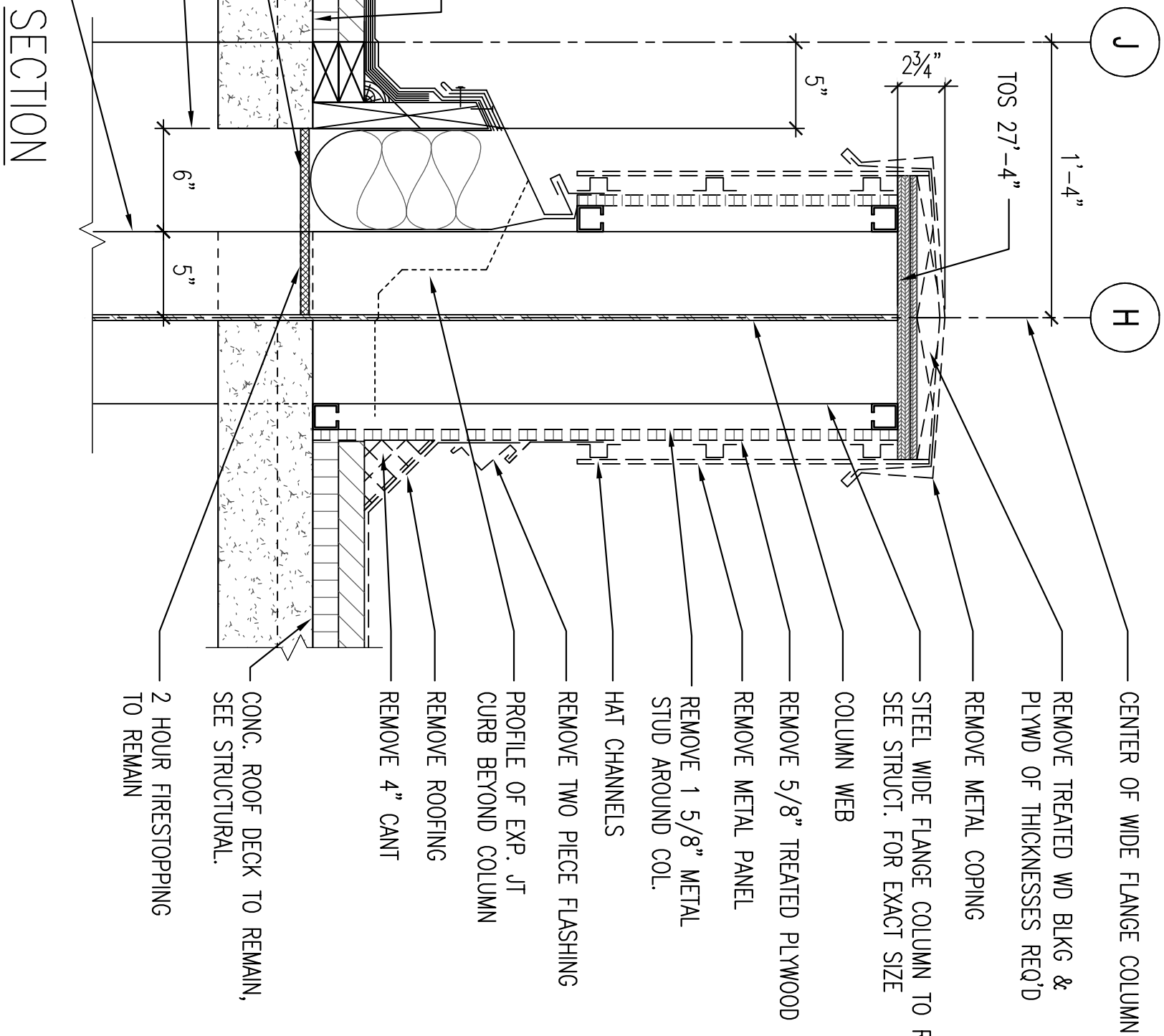
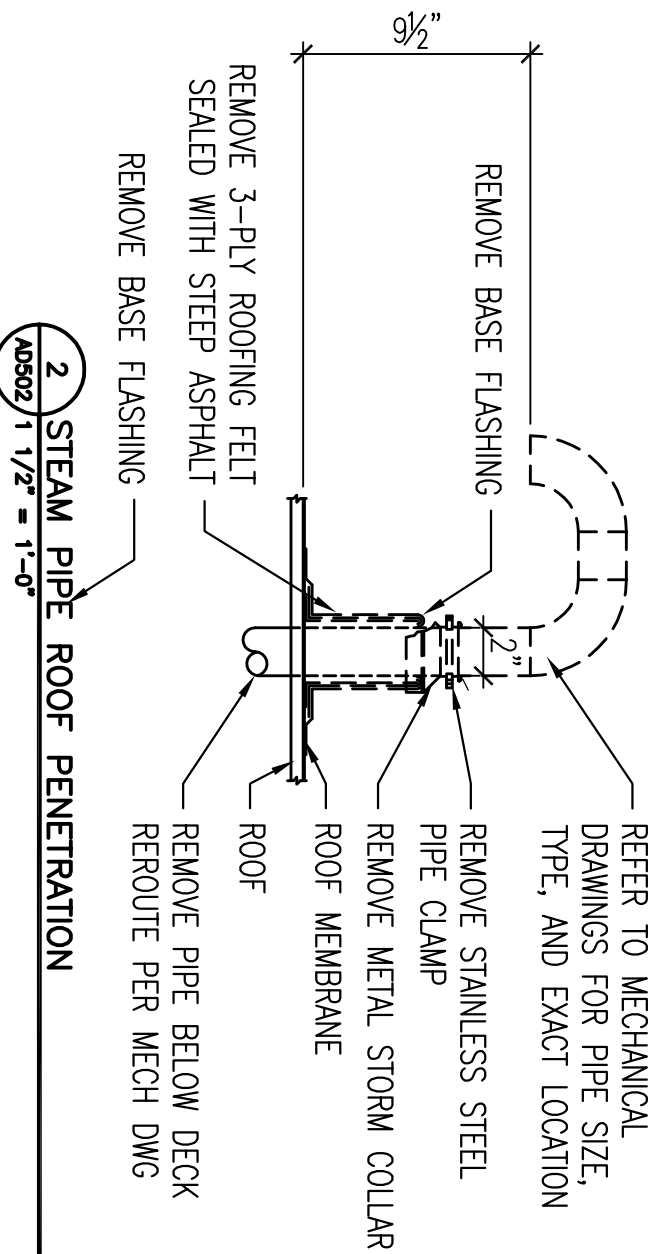
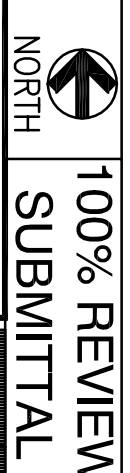
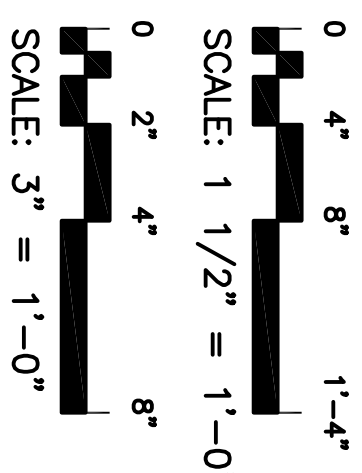
21

PARAPET
27'-6 3/4"REMOVE P.T. WOOD
BLOCKING

REMOVE PLYWOOD

REMOVE METAL FLASHING
AND COUNTER FLASHING

REMOVE CANT STRIP

REMOVE ROOFING MEMBRANE
ON TAPERED INSULATION ON
CONCRETE DECK2 1/2" ALUMINUM COMPOSITE
ROUTE & RETURN PANEL
TO REMAIN8" METAL STUDS @
16" O.C. TO REMAIN
-SUPPORT DURING
RECONSTRUCTIONR-11 BATT INSULATION
TO REMAINSECOND FLOOR / ROOF
24'-6"CONCRETE DECK TO
REMAINENTRANCE CANOPY TO
REMAIN1 DEMO @ EAST ENTRANCE PARAPET
1/2" = 1'-0"3 ROOF EXP. JOINT @ COL. J-H
1/2" = 1'-0"

Toland ♦ Mizell ♦ Molnar, LLC

590 MEANS STREET NW,
SUITE 200
ATLANTA, GA. 30318
404-214-9774



Drawing Title
DEMOLITION DETAILS

Project Title
**2ND FLOOR OUTPATIENT
MENTAL HEALTH**

Date
05-25-2011

Project No.
W256-C-1047

Building Number
BLDG.1 SOUTH WING

Checked
-

Drawn
-

Location
VIA MEDICAL CENTER
SHREVEPORT, LOUISIANA

DRAWING NO.

AD502

Dwg. - of -

**Veterans
Administration**